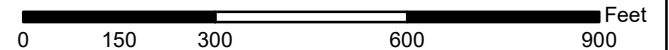
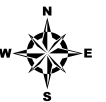
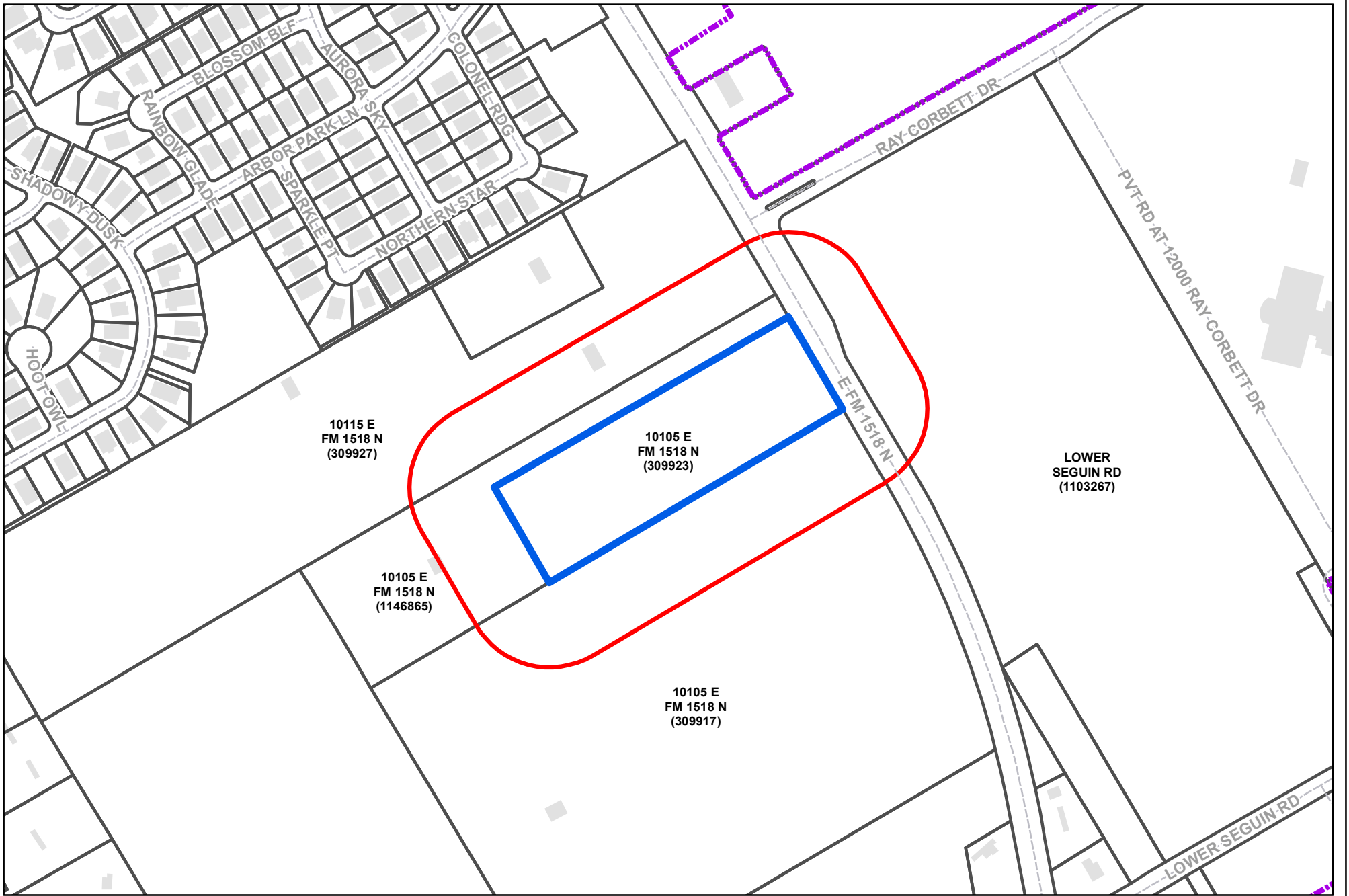


SCHERTZ **Tract 1** City of Schertz
 COMMUNITY • SERVICE • OPPORTUNITY
 Last Update: April 22, 2021
 THE CROSSVINE PDD - 5TH AMENDMENT
 TRACT 1

-  Parcel Boundaries
-  Schertz City Boundary
-  200' Notification Buffer

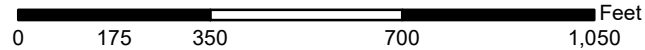


The City of Schertz provides this Geographic Information System product "as is" without any express or implied warranty of any kind including but not limited to the implied warranties of merchantability and fitness for a particular purpose. In no event shall The City of Schertz be liable for any special, indirect or consequential damages or any damages whatsoever arising out of or in connection with the use of or performance of these materials. Information published in this product could include technical inaccuracies or typographical errors. Periodical changes may be made and information may be added to the information herein. The City of Schertz may make improvements and/or changes in the product(s) described herein at any time.

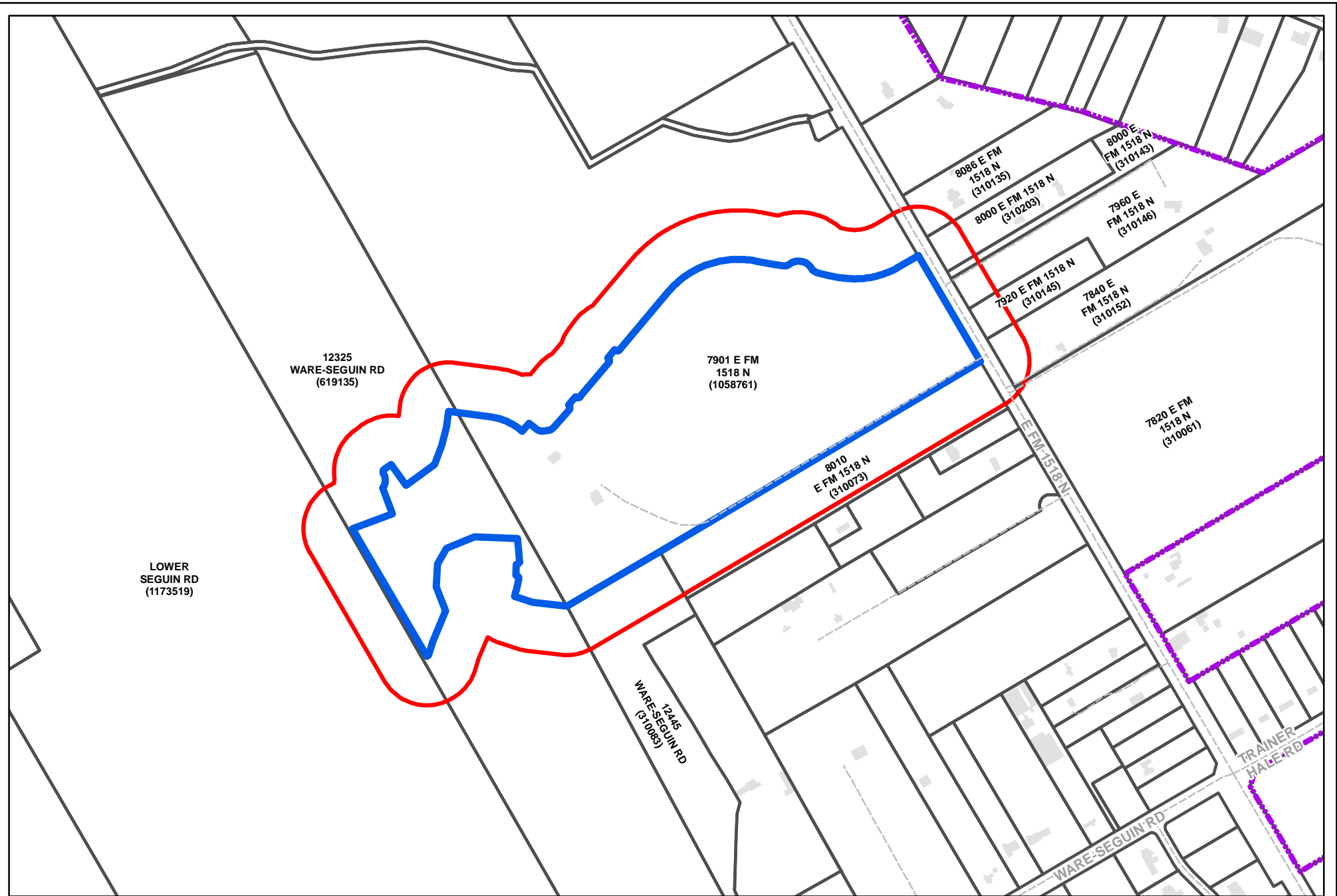


SCHERTZ **Tract 2** City of Schertz
 COMMUNITY * SERVICE * OPPORTUNITY
 Last Update: April 22, 2021
 City of Schertz, GIS Specialist: Bill Gardner, gis@schertz.com (210) 619-1185
THE CROSSVINE PDD - 5TH AMENDMENT
TRACT 2

 Parcel Boundaries
  Schertz City Boundary
  200' Notification Buffer



The City of Schertz provides this Geographic Information System product "as is" without any express or implied warranty of any kind including but not limited to the implied warranties of merchantability and fitness for a particular purpose. In no event shall the City of Schertz be liable for any special, indirect or consequential damages or any damages whatsoever arising out of or in connection with the use of or performance of these materials. Information published in this product could include technical inaccuracies or typographical errors. Periodical changes may be made and information may be added to the information herein. The City of Schertz may make improvements and/or changes in the product(s) described herein at any time.



SCHIERTZ Tract 3 City of Schertz



COMMUNITY • SERVICE • OPPORTUNITY

Last Update: April 22, 2021

City of Schertz, GIS Specialist: Bill Gardner, gis@schertz.com (210) 619-1185

"The City of Schertz provides this Geographic Information System product "as is" without any express or implied warranty of any kind including but not limited to the implied warranties of merchantability and fitness for a particular purpose. In no event shall The City of Schertz be liable for any special, indirect or consequential damages or any damages whatsoever arising out of or in connection with the use of or performance of these materials. Information published in this product could include technical inaccuracies or typographical errors. Periodical changes may be made and information may be added to the information herein. The City of Schertz may make improvements and/or changes in the product(s) described herein at any time."

THE CROSSVINE PDD - 5TH AMENDMENT MODULE 3A UNIT 1 AREA

-  Parcel Boundaries
-  Schertz City Boundary

 200' Notification Buffer

