

Exhibit A

SECURITY

City of Schertz
27 Commercial Place
Security Systems Proposal



March 8, 2021

Attention: Jennifer A. Black, PE
Vice President of Engineering Services
Sledge Engineering LLC
Phone: 817.559.2842
Email: jennifer@sledge.biz

RE: City of Schertz – 27 Commercial Place Security System Layout and Proposal

Dear Ms. Black,

We are pleased to present DAC's proposal to serve The City of Schertz. Our entire team is enthusiastic about the prospect of servicing the security infrastructure at your installation. We are committed to integrity and quality, and we are proud of our record and reputation.

DAC, Inc. understand the scope as defined in this document to meet the needs of the site to upgrade the Access Control and CCTV systems as defined below.

- A. Open Options Access Control Additions
- B. CCTV Surveillance Additions

Thank you for your consideration. We are committed to exceeding your expectations and look forward to working with you on this opportunity.

Respectfully,

Roy Charbonneau
Branch Manager
DAC, Inc.
Email: rcharbonneau@dac-inc.com
Phone: 281-507-7014

Jonathan Rackel
Business Development Manager
DAC, Inc.
Email: jrackel@dac-inc.com
Phone: 713-206-9669

SCOPE

DAC, Inc. has put together the following information and attached drawings to define the scope and placement of the new security devices. The scope is based a full turn-key system installation to include all cabling and equipment necessary for a fully functional system.

Scope Includes:

Access Control: (13) New Access Control Doors

Equipment Covered:

- Open Options Access Control Controllers
- Open Options Access Control Controller Licenses (as required)
- New Card Reader(s) for new location access control door and elevator access control
- Electrified Door Hardware (As Required by door at the site)
- Door Position Sensors
- Egress Motion Detectors (REX)
- Electrified Lock Power Supplies
- New composite cabling
- Installation Labor
- Programming Labor

CCTV System: (19) Additional CCTV Cameras

Equipment Covered:

- New Interior CCTV Cameras
- New Exterior CCTV Cameras
- New Mounting Brackets (as required for each camera)
- New Surge protectors for exterior mounted CCTV cameras
- New Cat6 Cabling to all camera locations
- Installation Labor
- Programming Labor

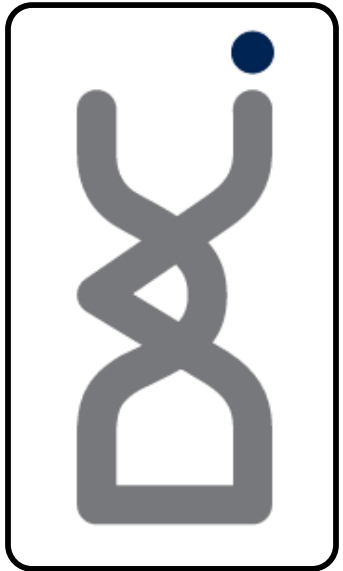
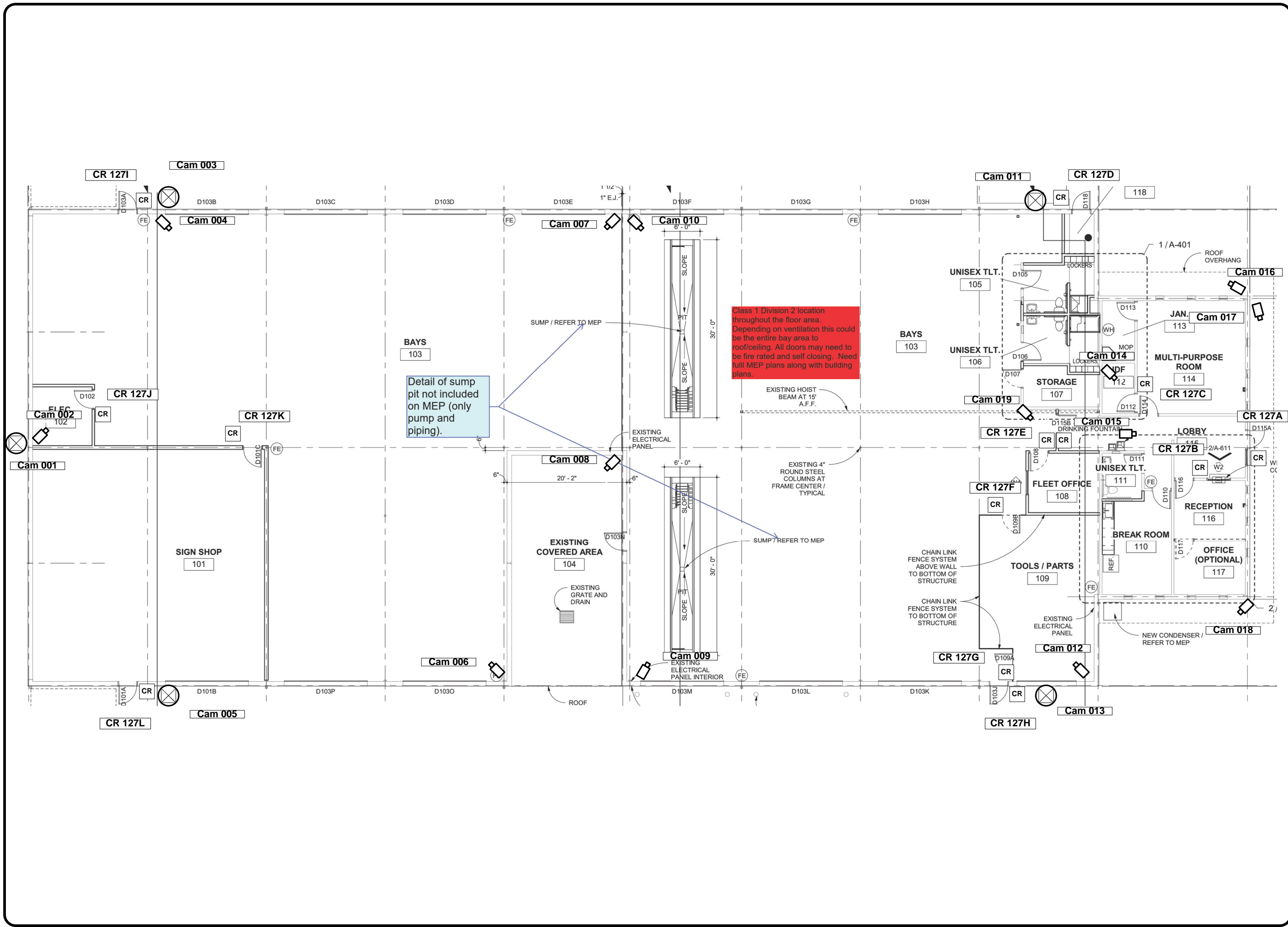
**** See attached drawings for all device locations**

PRICING

Description	Manufacturer	Part #	QTY	Price Ea	Total Price
Main Controllers	Open Options	SSP-D2	1	\$ 1,479.00	\$ 1,479.00
Door Controller	Open Options	RSC-2	6	\$ 670.50	\$ 4,023.00
Card Reader	HID	RP40	13	\$ 232.50	\$ 3,022.50
REX	Bosch	BOS-ISCCDL1WA12G	5	\$ 64.97	\$ 324.83
Door Hardware	IDN Acme		1	\$ 14,386.46	\$ 14,386.46
Door Power Supplies			1	\$ 332.99	\$ 332.99
Head In Build Out Materials			2	\$ 150.00	\$ 300.00
Enclosure			1	\$ 375.00	\$ 375.00
Wire/Cable Management			1	\$ 75.00	\$ 75.00
Weather/Fire Proofing Materials			1	\$ 37.50	\$ 37.50
Composite Cable			4	\$ 937.50	\$ 3,750.00
				\$ -	\$ -
OUTDOOR, 5MP BOX VARIFOCAL 2.8-10MM	AXIS	P1377-LE,	10	\$ 1,093.91	\$ 10,939.05
8.3MP180 DEGREE	AXIS	P3807-PVE	5	\$ 1,477.16	\$ 7,385.78
Axis Mini Dome	Axis	M3205-LVE	2	\$ 546.41	\$ 1,092.81
Axis Back Box	Axis	T94S01P	1	\$ 130.31	\$ 130.31
Axis Mini Dome IDF	Axis	M3065-V	2	\$ 294.56	\$ 589.11
CAT 6 Cable				\$ 340.50	\$ -
Surge Protector	AXIS	T8061	15	\$ 108.41	\$ 1,626.08
Lift Rental				\$ -	\$ -
				\$ -	\$ -
				\$ -	\$ -
				\$ -	\$ -
CAT 6 Cable				\$ -	\$ -
Total Materials					\$ 49,869.39
Tech Labor	DAC		1	\$ 17,550.00	\$ 17,550.00
Programing Labor	DAC		1	\$ 3,300.00	\$ 3,300.00
PM Labor	DAC		1	\$ 7,800.00	\$ 7,800.00
Labor Total					\$ 28,650.00
Total Material and Labor					\$ 78,519.39

Exclusions:

Pricing does not include 120V power, conduits, raceway or back boxes. Pricing does not include POE switches servers or workstation required.

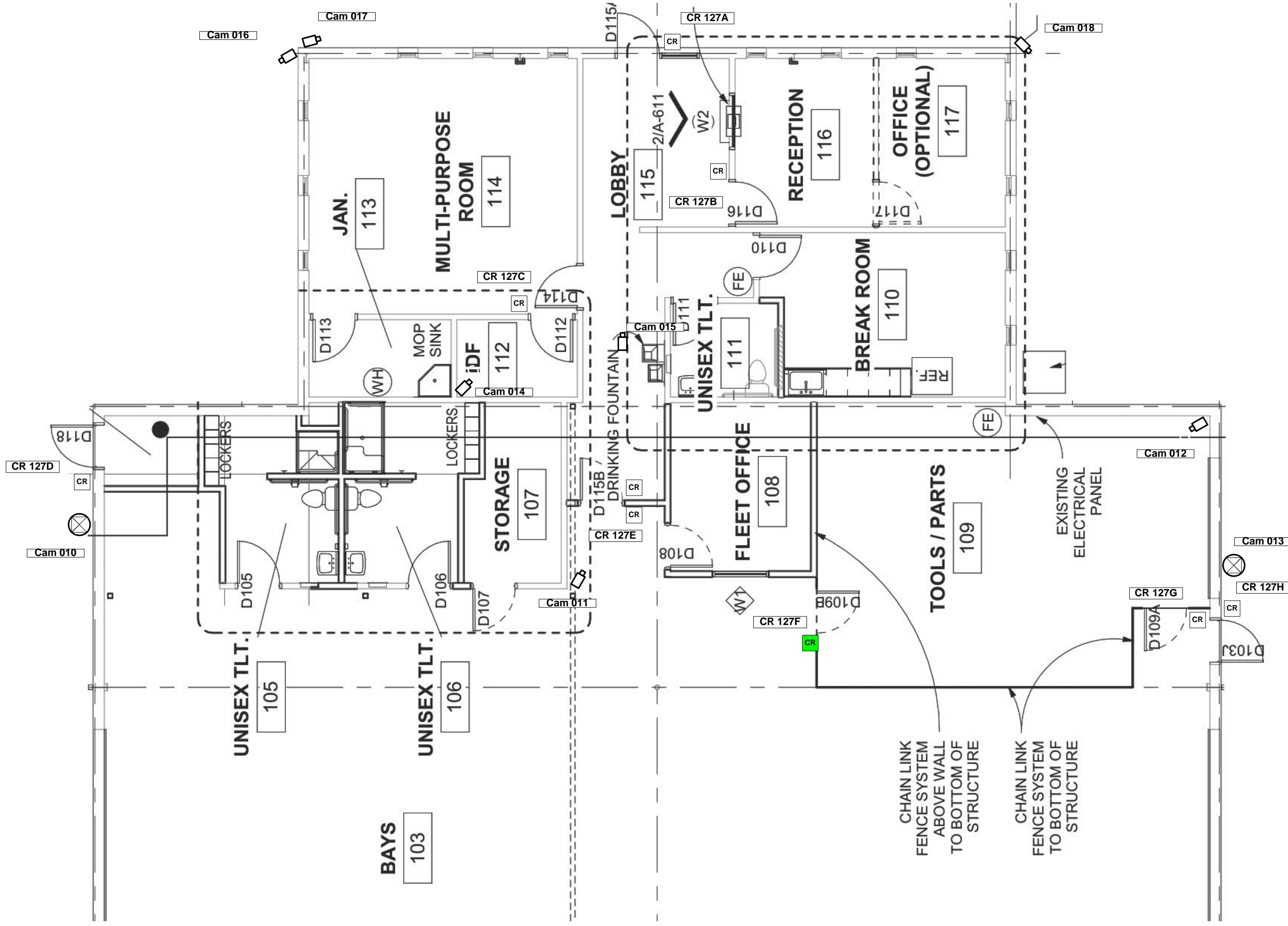


SCHERTZ
 COMMUNITY • SERVICE • OPPORTUNITY
 27 Commercial Place
 Security Design

Job Number

File Name
 27 Commercial Place
 Page 1

Date
 3/4/2021



Job Number

File Name

27 Commercial Place

Page 2

Date

3/4/2021

SCHERTZ
COMMUNITY • SERVICE • OPPORTUNITY

27 Commercial Place

Office Detail



27 Commercial Place Door Hardware Schedule

Door Opening ID 001
D103J, D109A, D109B, D115B, D118, D103A, D102, D101C, D101A

5000C-630 HES electric strike
70-10G04-LL-26D Sargent cylindrical lever lock, storeroom function
8501-689 Norton door closer
336000N626xxxM Medeco x4 SFIC core, factory master keyed

Door Opening ID 002
D114

20-70-10G04-LL-26D Sargent cylindrical lever lock, storeroom function, 2 3/8" backset
336000N626xxxM Medeco x4 SFIC core, factory master keyed

Door Opening ID 003
D112

5000C-630 HES electric strike
1-20-70-10G04-LL-26D Sargent cylindrical lever lock, storeroom function, 1 3/8" thick door, 2 3/8" backset
8501-689 Norton door closer
336000N626xxxM Medeco x4 SFIC core, factory master keyed

Door Opening ID 004
D113

1-20-70-10G04-LL-26D Sargent cylindrical lever lock, storeroom function, 1 3/8" thick door, 2 3/8" backset
336000N626xxxM Medeco x4 SFIC core, factory master keyed

Door Opening ID 005
D115A

5000C-630 HES electric strike
4510-x-5-2-01-628 Adams Rite deadlatch lock
4591-02-00-628 Adams Rite paddle trim
33602012N626xxxCTZ02M Medeco x4 SFIC mortise cylinder, Adams Rite cam, factory master keyed

Door Opening ID 006
D116

5000C-630 HES electric strike
20-70-10G04-LL-26D Sargent cylindrical lever lock, storeroom function, 2 3/8" backset
8501-689 Norton door closer
336000N626xxxM Medeco x4 SFIC core, factory master keyed

Door Opening ID 007
D117, D107

70-10G04-LL-26D Sargent cylindrical lever lock, storeroom function
336000N626xxxM Medeco x4 SFIC core, factory master keyed

Door Opening ID 008
D111

20-10U65-LL-26D Sargent cylindrical lever lock, privacy function, 2 3/8" backset

Door Opening ID 009
D110

20-70-10G05-LL-26D Sargent cylindrical lever lock, entrance function, 2 3/8" backset
336000N626xxxM Medeco x4 SFIC core, factory master keyed

Door Opening ID 010
D105, D106

10U65-LL-26D Sargent cylindrical lever lock, privacy function

Door Opening ID 011
D103N

70-10G04-LL-26D Sargent cylindrical lever lock, storeroom function
8501-689 Norton door closer
336000N626xxxM Medeco x4 SFIC core, factory master keyed

27 Commercial Place Door Access Control Door Schedule

Project Name:		City of Schertz		Intelligent Controller Settings		Intelligent Controller Settings		Server Network Settings			
System	Open Options	IP		IP		IP					
Type	Access Control	Subnet		Subnet		Subnet					
Contact info	DAC Service Dept: (713)975-8160		Gateway		Gateway		Gateway				
		Patch/Switch Port		Patch/Switch Port		Model					
Door ID	Name	Floor	Hardware	Hardware Set	Panel Location	Reader Port	Input Port	Output Port	Installed	Programmed	Tested
CR 127A	D115A	1	005	Card Reader Accrss							
CR 127B	D116	1	006	Card Reader Accrss							
CR 127C	D112	1	003	Card Reader Accrss							
CR 127D	D118	1	001	Card Reader Accrss							
CR 127E	D115B	1	001	Card Reader Accrss							
CR 127F	D109B	1	001	Card Reader Accrss							
CR 127G	D109A	1	001	Card Reader Accrss							
CR 127H	D103J	1	001	Card Reader Accrss							
CR 127I	D103A	1	001	Card Reader Accrss							
CR 127J	D102	1	001	Card Reader Accrss							
CR 127K	D101C	1	001	Card Reader Accrss							
CR 127L	D101A	1	001	Card Reader Accrss							



SCHERTZ
 COMMUNITY • SERVICE • OPPORTUNITY

27 Commercial Place
 Door Hardware Schedule
 Access Control Schedule

Job Number

Date
3/4/2021

File Name
 27 Commercial Place
 Page 4