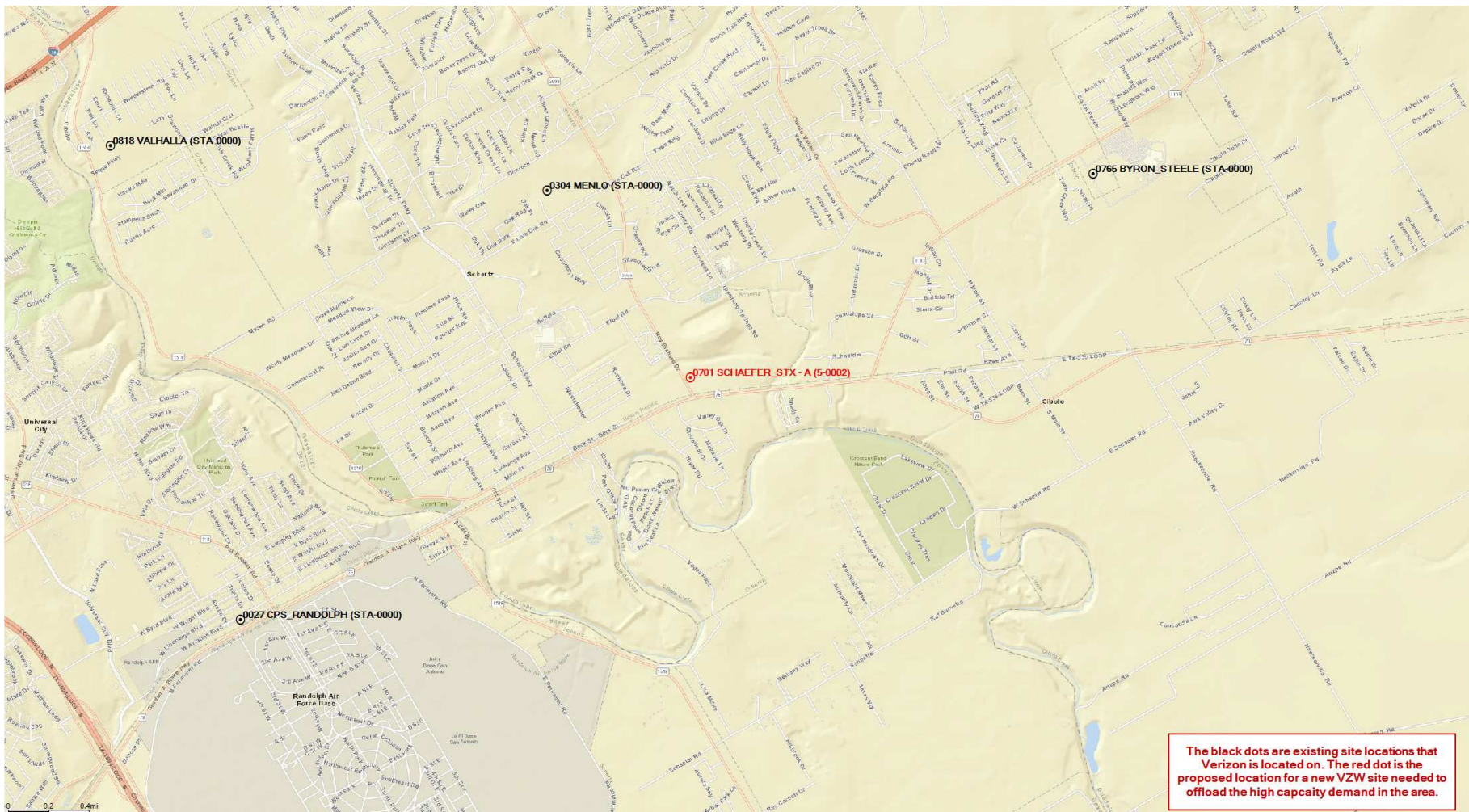


SCHAEFFER_STX

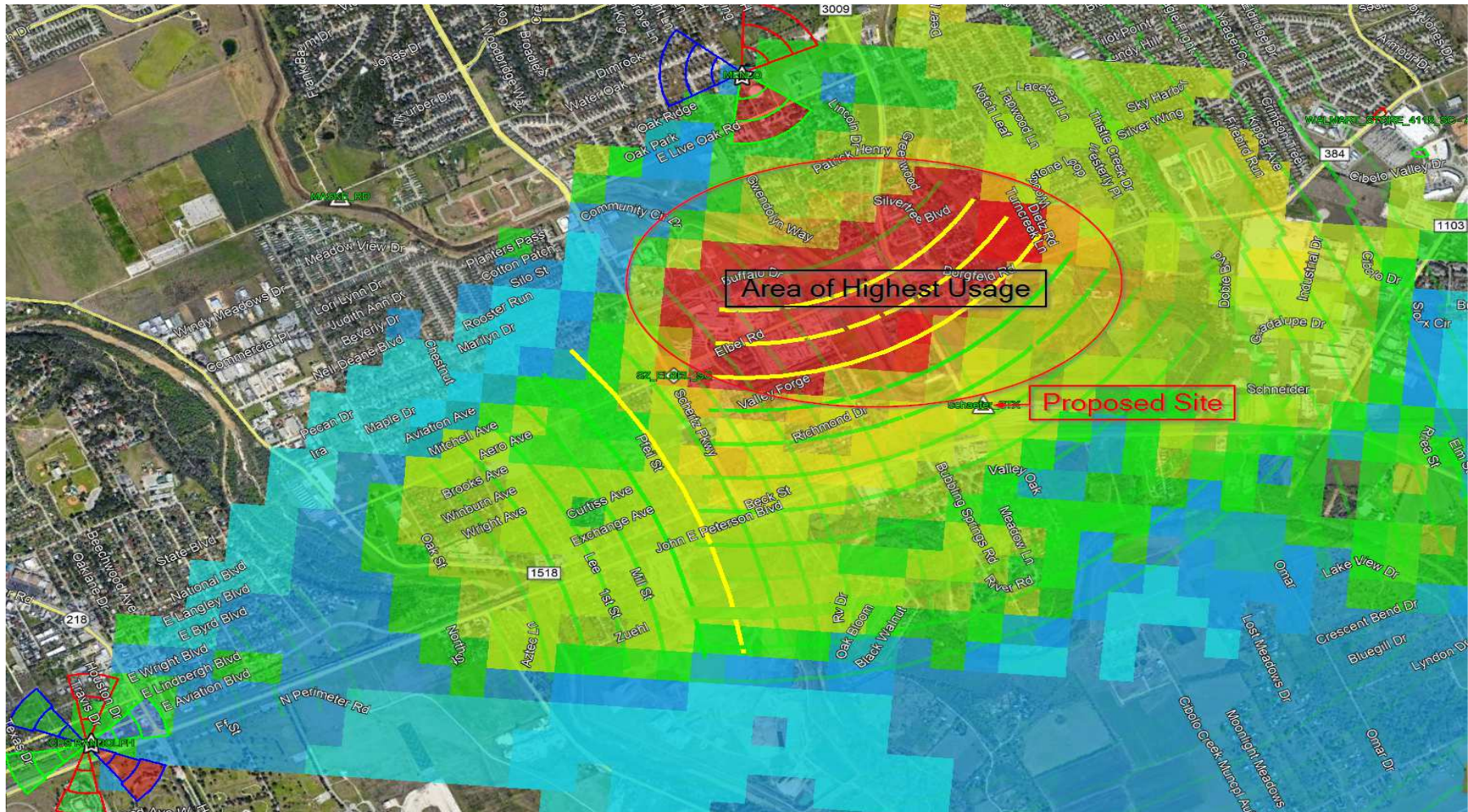
Capacity Offload and Coverage Plots

Map of towers with visible labeling



The black dots are existing structures where Verizon is located. The red dot is the proposed Verizon site. We are not aware of any other structures that are suitable in height within or near the area of highest usage/demand as depicted on the following slides.

Capacity Demand Map



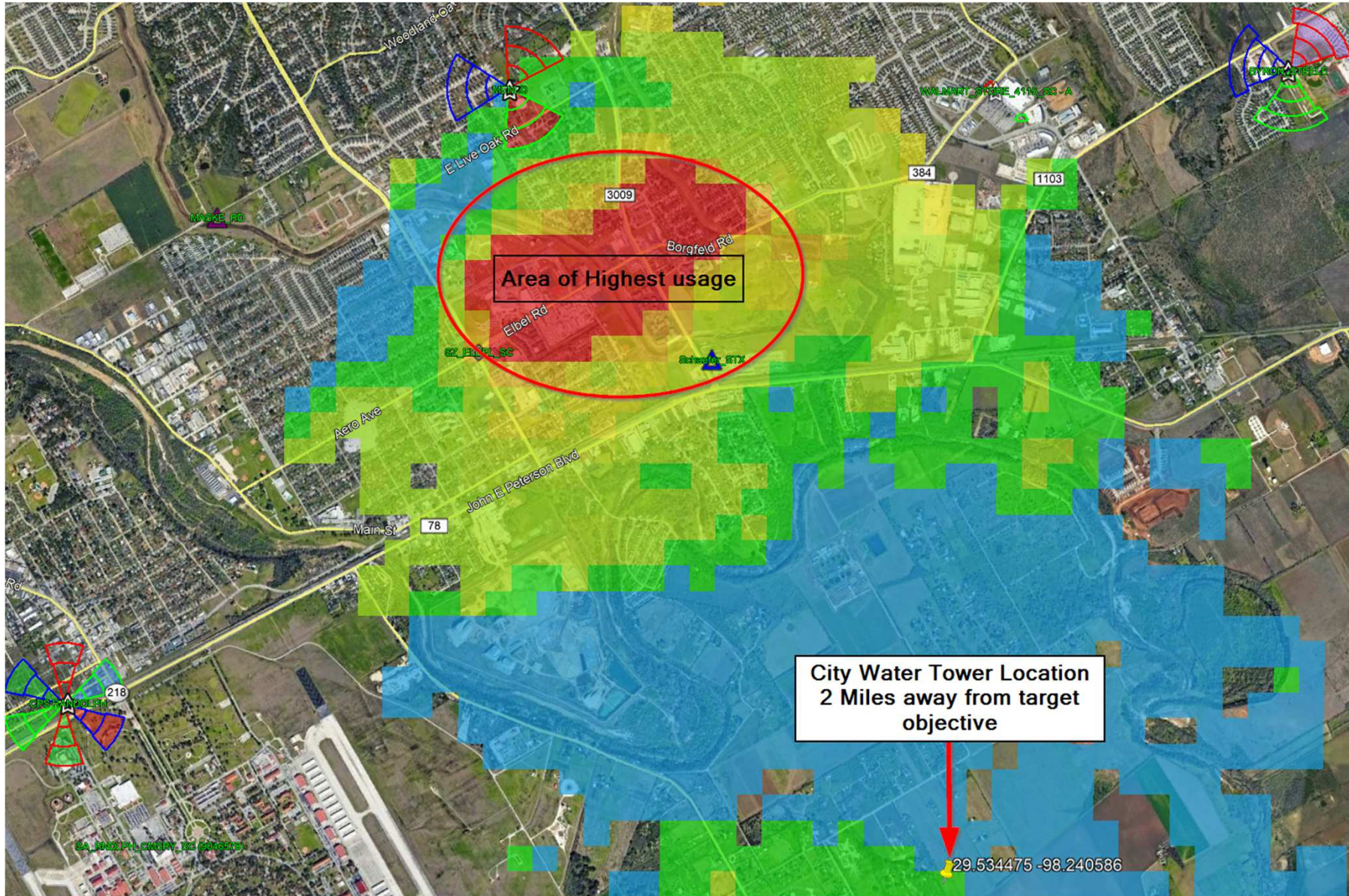
Area of highest usage is the area where the most connections are being utilized. There may be times that the demand for network resources is so high that new connections are blocked.

These maps are not a guarantee of coverage and are a general prediction of where coverage presently exists based on our internal data. Wireless service is subject to network and transmission limitations, particularly near boundaries and in remote areas. Customer equipment, weather, topography and other environmental considerations associated with radio technology also affect service.



Customer usage/Demand Plot
Red/Orange = very high capacity demand
Yellow/Green = Medium capacity demand
Blue = Low capacity demand

Capacity Demand Map in relation to City Water Tower

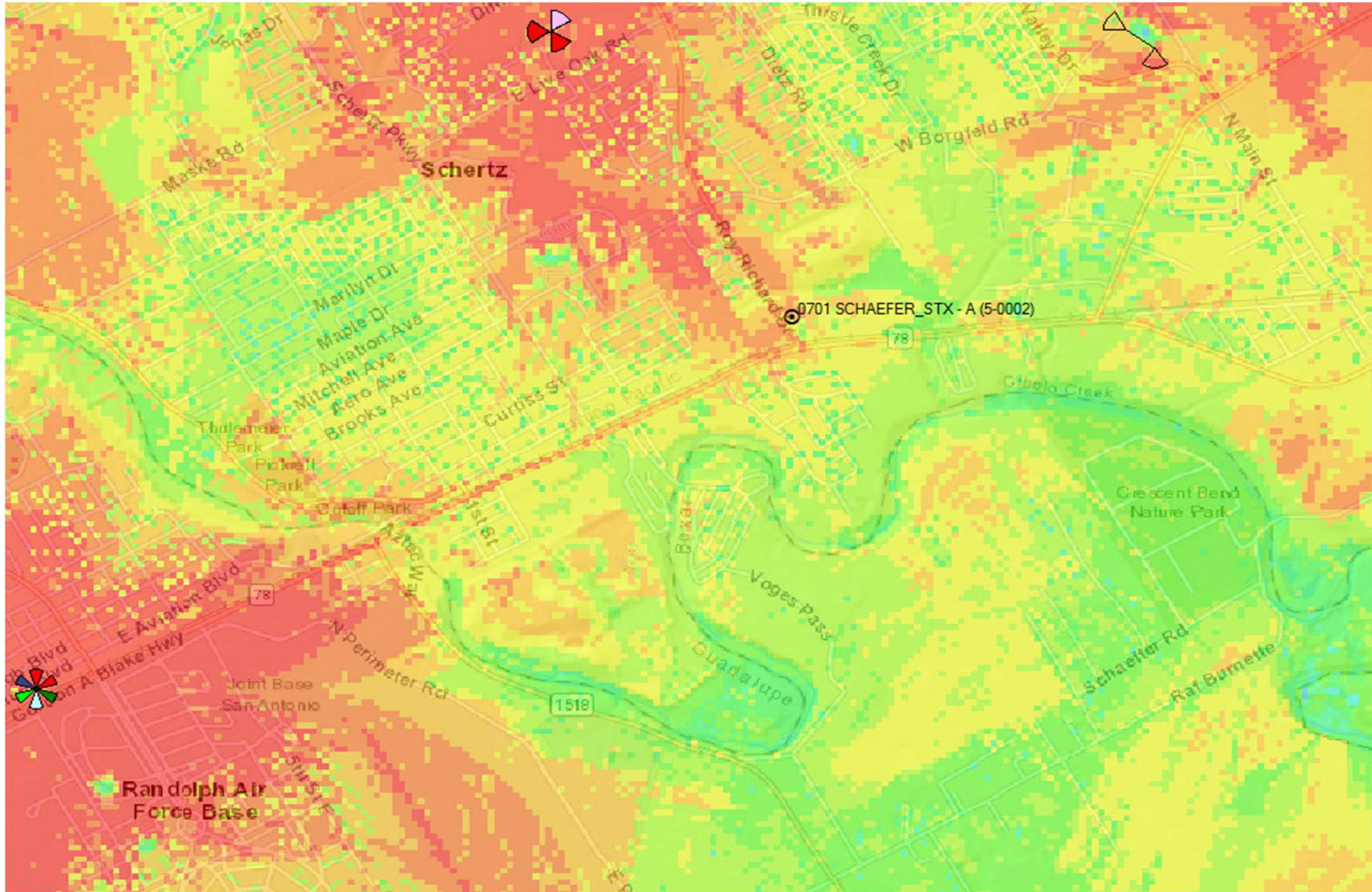


These maps are not a guarantee of coverage and are a general prediction of where coverage presently exists based on our internal data. Wireless service is subject to network and transmission limitations, particularly near boundaries and in remote areas. Customer equipment, weather, topography and other environmental considerations associated with radio technology also affect service.



Customer usage/Demand Plot
Red/Orange = very high capacity demand
Yellow/Green = Medium capacity demand
Blue = Low capacity demand

Current Coverage



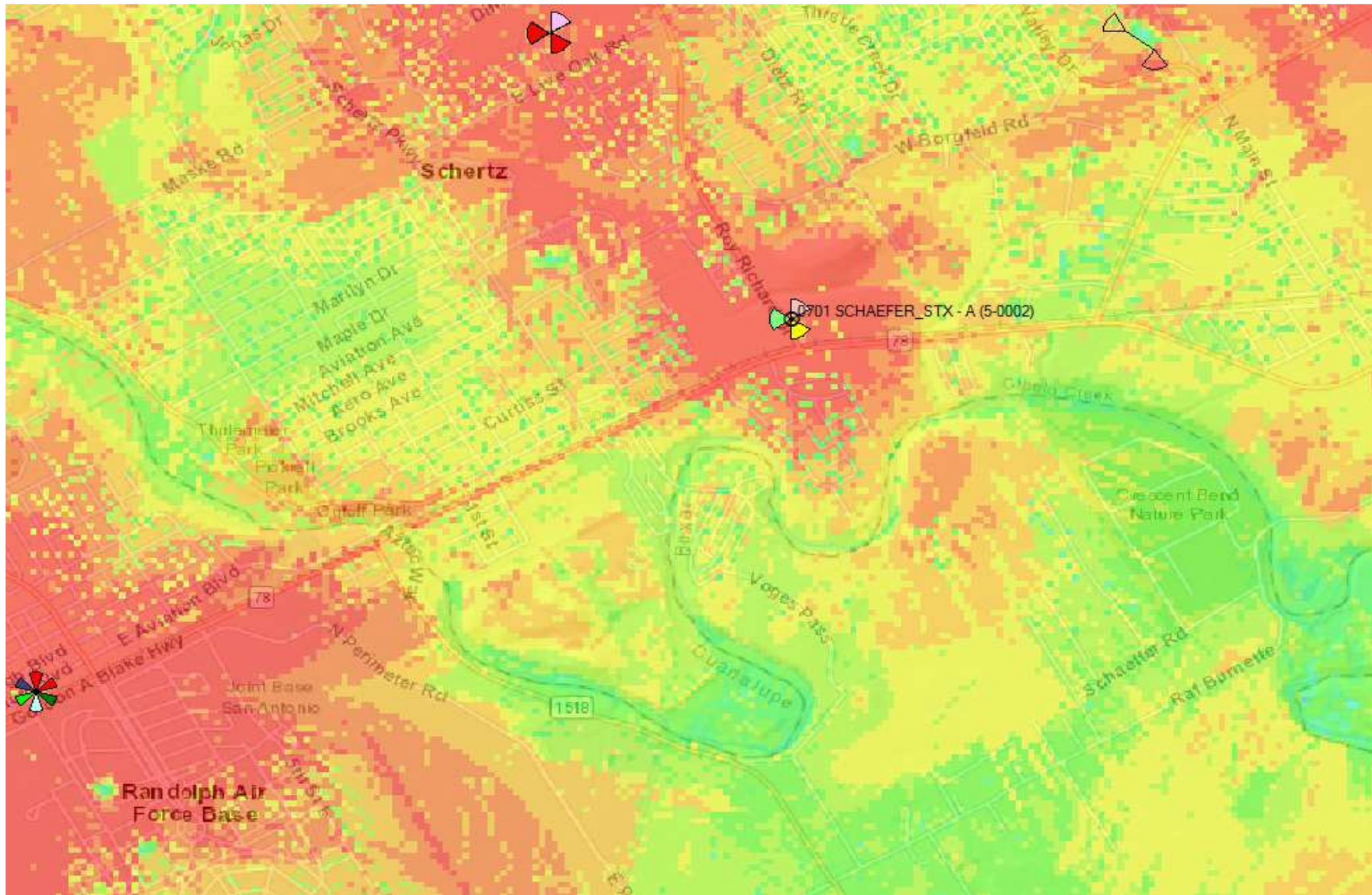
These maps are not a guarantee of coverage and are a general prediction of where coverage presently exists based on our internal data. Wireless service is subject to network and transmission limitations, particularly near boundaries and in remote areas. Customer equipment, weather, topography and other environmental considerations associated with radio technology also affect service.



Coverage Legend

- Red/Orange** = Expected indoor coverage
- Yellow/Green** = In-Vehicle, but not always indoor coverage
- Blue** = Outdoor only coverage

Proposed Coverage



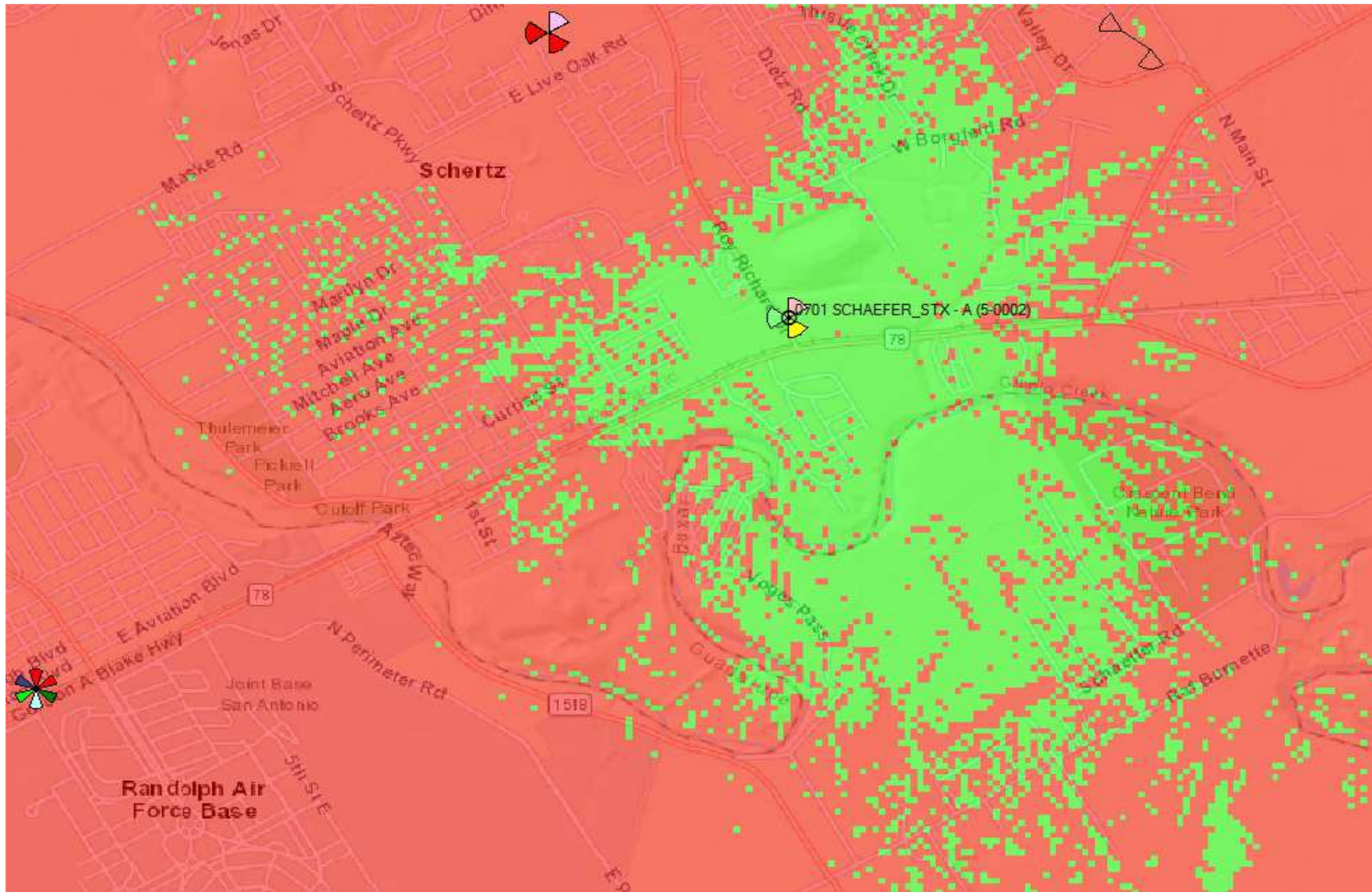
These maps are not a guarantee of coverage and are a general prediction of where coverage would exist based on our internal data. Wireless service is subject to network and transmission limitations, particularly near boundaries and in remote areas. Customer equipment, weather, topography and other environmental considerations associated with radio technology also affect service.



Coverage Legend

- Red/Orange = Expected indoor coverage
- Yellow/Green = In-Vehicle, but not always indoor coverage
- Blue = Outdoor only coverage

Best Server Plot With New Site (Green is the New Site's total footprint signal)



These maps are not a guarantee of coverage and are a general prediction of where coverage presently exists based on our internal data. Wireless service is subject to network and transmission limitations, particularly near boundaries and in remote areas. Customer equipment, weather, topography and other environmental considerations associated with radio technology also affect service.



Best Server Plot from City Water Tower location (Green is the New Site's total footprint signal)



These maps are not a guarantee of coverage and are a general prediction of where coverage presently exists based on our internal data. Wireless service is subject to network and transmission limitations, particularly near boundaries and in remote areas. Customer equipment, weather, topography and other environmental considerations associated with radio technology also affect service.



Cibilo Water Tower 2 miles SE

Existing Verizon site



Thank you.