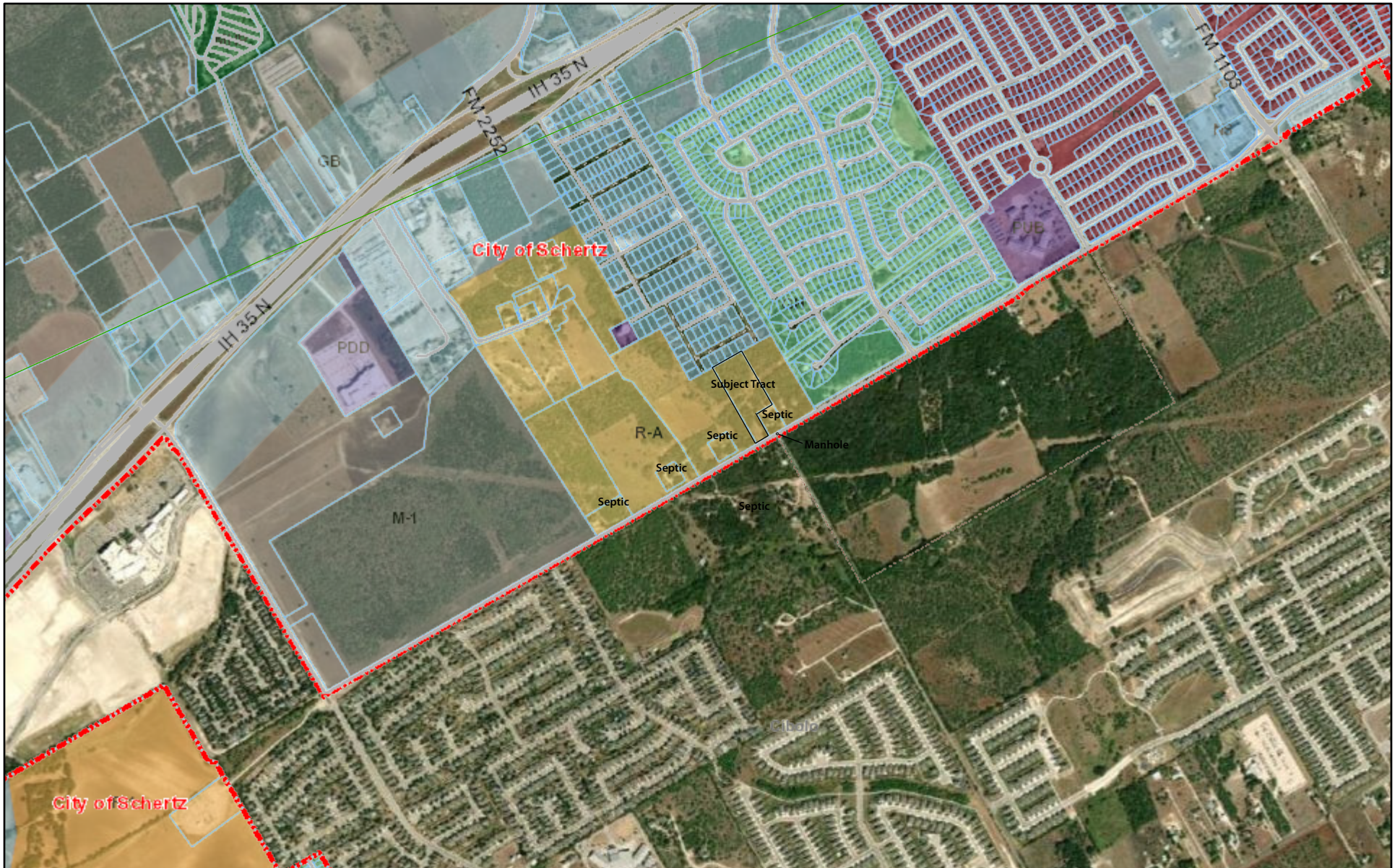


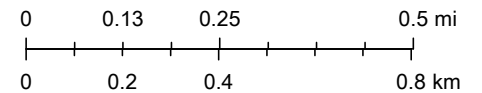
# The City of Schertz



4/15/2021, 10:43:56 AM

- |                   |           |                    |                 |            |
|-------------------|-----------|--------------------|-----------------|------------|
| County Boundaries | Minor     | Railroads          | Parcel Polygons | APZ II     |
| Road Segments     | Proposed  | Municipal Boundary | AICUZ           | Clear Zone |
| Major             | Abandoned | ETJ Boundary       | APZ I           |            |

1:18,056



Esri, HERE, IPC, Maxar

GIS Department

This product is for informational purposes and may not have been prepared for or be suitable for legal, engineering, or surveying purposes. It does not represent an on-the-ground survey and represents only the approximate relative location of property boundaries.