

# Schertz Parks & Recreation Master Plan 5-Year Update July 2021

---

The following document is an update to the City of Schertz Parks and Recreation Master Plan 2014: Live and Play! It provides a brief summary of plan accomplishments to date, as well as applicable updates of demographics, goals and objectives, and maps. Revisions were made to priority listings based on completed projects and additional public input. This document only references updates, or changes made to the original plan; all other elements of the original plan are still relevant today. A further, more in-depth update culminating in a new Master Plan will be completed as part of the City's Comprehensive Land Plan Update that will take place in 2022. This 5-Year Update was adopted by the Parks & Recreation Advisory Board at their meeting on July 26, 2021 and by Schertz City Council at their meeting on August XX, 2021.

## Chapter 1 Forward and Chapter 2 Executive Summary

No changes to Mission, Vision, and Goals and Objectives at this time.

Resolution from City Council added here XX.

## Chapter 3 History and Demographics

In 2010 the population of the City of Schertz was 31,560 and the estimated population in 2011 when the Master Plan was being developed was 32,478. The most recent 2020 population estimate from the Census Bureau is 42,440 though official figures still have not been released due to COVID delays. A snapshot from [www.censusreporter.org](http://www.censusreporter.org) is included below.



Find data for this place

Hover for margins of error and contextual data.

**Demographics**

† Margin of error is at least 10 percent of the total value. Take care with this statistic.

**Age**

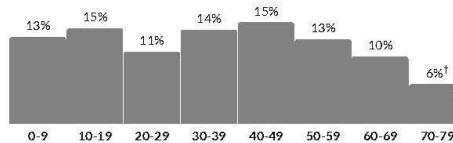
**38**

**Median age**

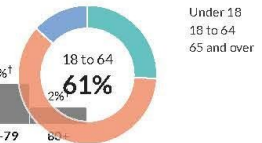
about 10 percent higher than the figure in the San Antonio-New Braunfels, TX Metro Area: 34.7

about 10 percent higher than the figure in Texas: 34.6

Population by age range

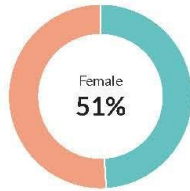


Population by age category

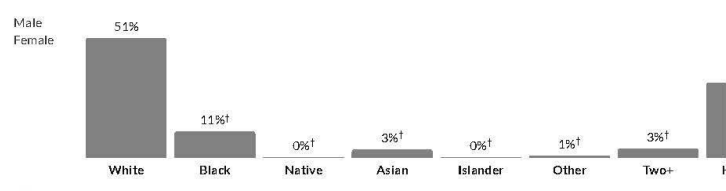


† Margin of error is at least 10 percent of the total value. Take care with this statistic.

**Sex**



**Race & Ethnicity**



\* Hispanic includes respondents of any race. Other categories are non-Hispanic.

**Economics**

**Income**

## Chapter 4 Current Inventory

### City Owned Developed Parks

New city parks added: Schertz Dog Park, Schertz Skate Park (Phase I), Veteran's Memorial Plaza, Cypress Point Park, Rhine Valley Park, Heritage Oaks Park, and Mary Whitfield Burks Park.

### HOA Parks

New HOA parks have been added since the 2014 Master Plan was created but at this time, we have not assessed those. They will be assessed in the future Parks Master Plan update with the Comprehensive Land Use Plan.

### Private Golf Course

The privately-owned golf course has ceased operations as of this update. If the land is redeveloped into residential lots in the future, it would trigger parkland dedication requirements for this parcel and the goal would be to retain some of the connectivity that the cart paths provide to the community for walking and biking.

### Deferred Maintenance

A list of deferred maintenance items by location is provided in Table 4.34 on Page 4.46 of the Master Plan.

Ashley Park – all items listed have been completed.

Crescent Bend Nature Park – 2/3 of the main road has been resurfaced

Pickrell Park – water fountains have been replaced with new accessible tri-bowl fountains. Picnic tables are being replaced at a rate of 10 per year (20 new at this point.)

Thulemeyer Park – repairs at Thulemeyer are pending a larger review of park. Survey has been completed and design of new asphalt parking lot (to replace dirt lot) is in process.

### The Park System Today

The following maps show the park system as it stands today with the addition of the new parks and the future parks coming in the next 5 years. Those parks are in the Homestead neighborhood, the Parklands neighborhood, the Hallie's Cove neighborhood, and the Graytown Valley neighborhood.



### ATHLETIC FIELDS

1. Johnie McDow Sports Complex	955 Community Circle
2. Schertz Soccer Complex	75 Maske Road
3. Thulemeyer Park	901 Oak Street

### PARKS

4. Ashley Park	534 Ashley Park
5. Crescent Bend Nature Park	12805 Schaefer Road
6. Cut-Off Park	700 Block of FM 1518
7. Cypress Point Park	5526 Cypress Point
8. Forest Ridge Park	17529 Wiederstein Road
9. Gutierrez Xeriscape Park	1231 Borgfeld Road
10. Heritage Oaks Park	11700 Longleaf Parkway
11. Lone Oak Park	100 Block of Roundtree Dr.
12. Mary Whitfield Burks Park	3175 Schertz Parkway
13. Oak Forest Park	4200 Block of FM 3009
14. Palm Park	200 Block of FM 78
15. Pickrell Park	701 Oak Street
16. Rhine Valley Park	9958 Mulhouse Drive
17. Schertz Community Playscape	629 Westchester Drive
18. Schertz Dog Park	940 Community Circle
19. Schertz Skate Park	820 Community Circle
20. The Park at Woodland Oaks	905 Woodland Oaks Drive
21. Wendy Swan Memorial Park	4601 Cherry Tree Drive
22. Veteran's Memorial Plaza	512 Schertz Parkway
23. North Center	3501 Morning Drive
27 - 30	Future Parks

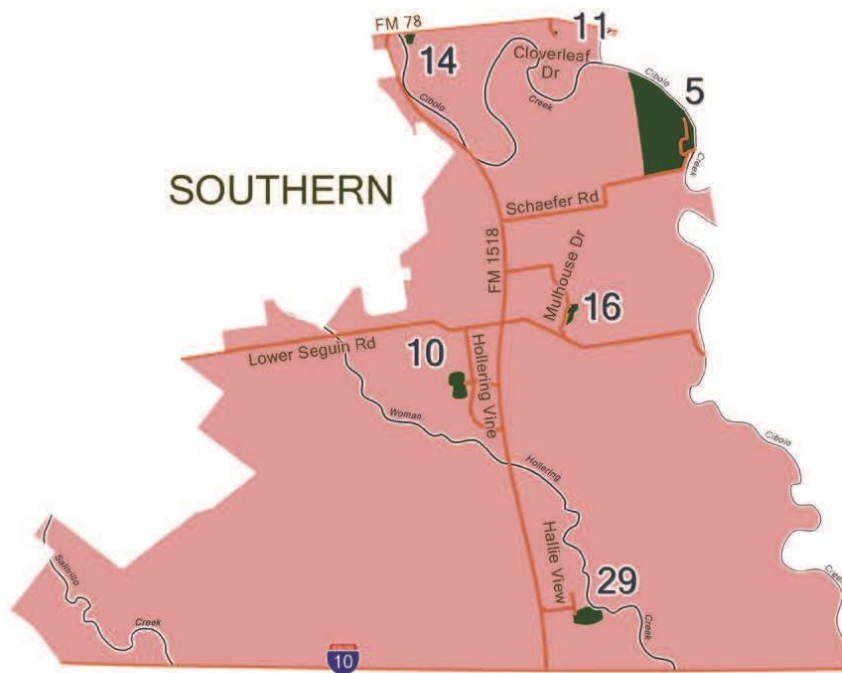
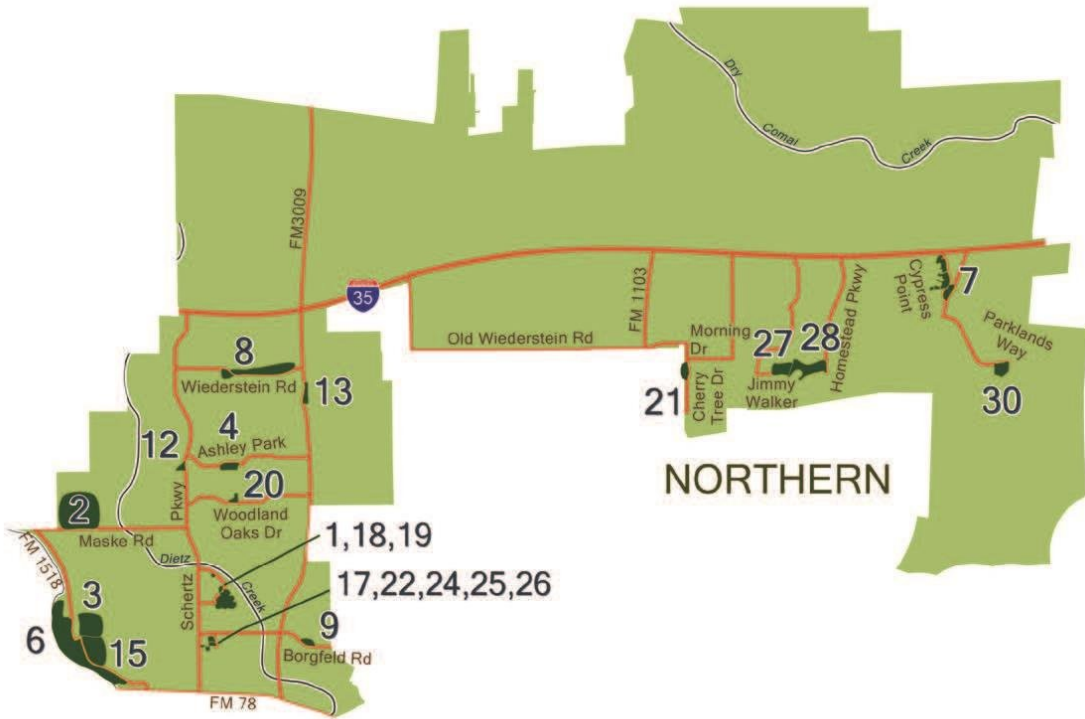
### RECREATION FACILITIES

24. Schertz Area Senior Center	608 Schertz Parkway
25. Schertz Aquatic Center	560 Schertz Parkway
26. Schertz Recreation Center	621 Westchester Drive



### WALKING TRAILS

Park	Distance
Ashley Park Trail	0.25 miles
Cibolo Creek Primitive Trails	6 miles
Crescent Bend Nature Park Trails	4 miles
Cypress Point Park Trail	0.58 miles
Forest Ridge Park Trail	0.5 miles
FM 3009 Sidewalks	5.5 miles
Gutierrez Xeriscape Park Trail	0.19 miles
Heritage Oaks Park Trail	0.5 miles
Misty Woods Trail	0.21 miles
Oak Forest Park Trail	0.57 miles
Pickrell Park Trail	0.30 miles
Rhine Valley Park Trail	0.31 miles
Schertz Exercise Trail	0.5 miles
Schertz Parkway Trails	6 miles
Wendy Swan Memorial Park Trail	0.17 miles



**PARKS MAP & TRAIL LIST**

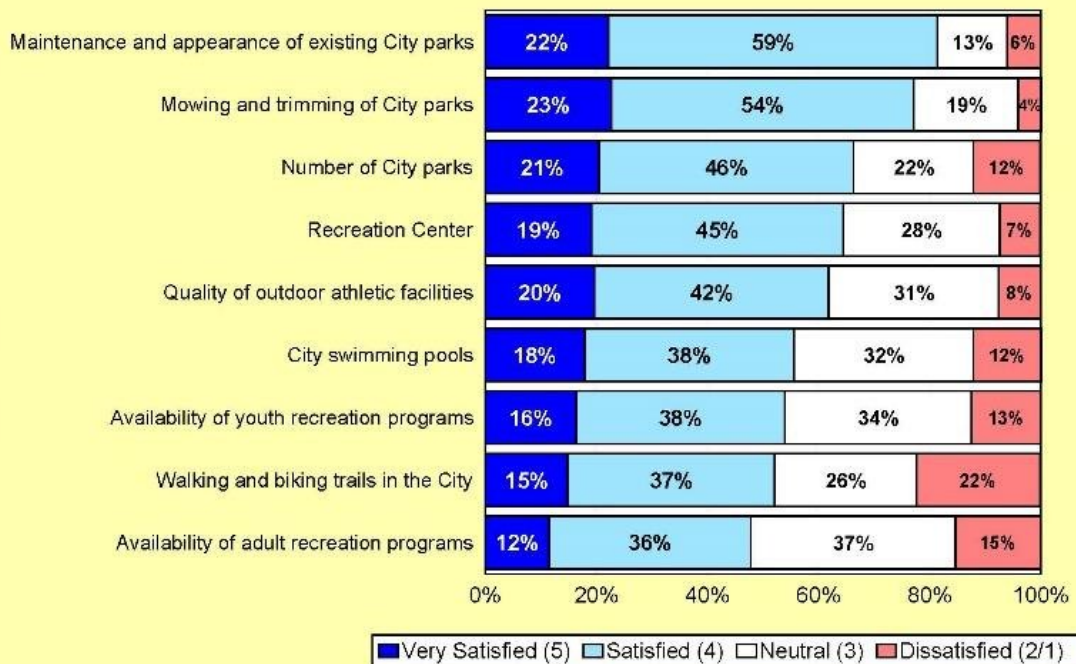
## Chapter 5 Citizen Survey and Public Input

Since the Master Plan in 2014 the city has completed two Citizen Satisfaction Surveys in 2016 and 2019 and both included specific questions regarding parks and recreation. Residents were asked about their satisfaction with Parks and Recreation Services. Overall they were satisfied with the maintenance and appearance of city parks, but 22% of respondents were dissatisfied with the walking and biking trails in the city which was the highest percentage of dissatisfaction that was measured.

2019 Schertz Community Survey: Findings Report

### Q5. Satisfaction with Parks and Recreation Services

by percentage of respondents who rated the item as a 1 to 5 on a 5-point scale (excluding don't knows)



Source: ETC Institute (2019)

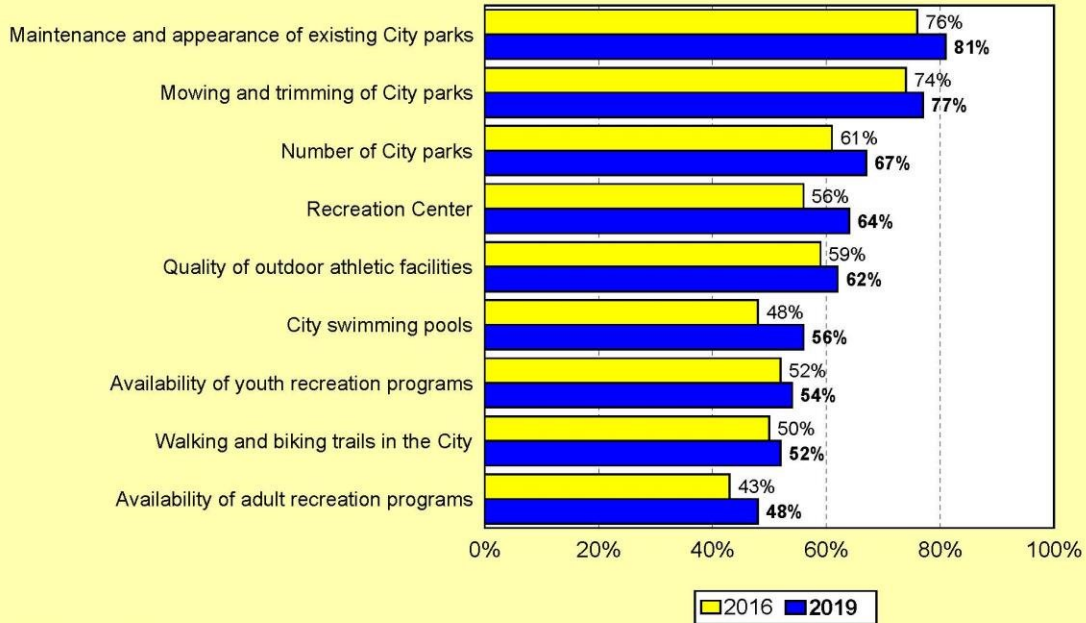
ETC Institute (2019)

Page 9

Results on satisfaction were also compared from the 2016 survey to the 2019 survey and improvements were made in all categories, however satisfaction with hiking and biking trails in the city remained at 52% and satisfaction with availability of adult recreation programs remained at 48%, which was much lower than other categories.

## TRENDS: Satisfaction with Parks and Recreation 2016 vs. 2019

by percentage of respondents who rated the item as a 4 or 5 on a 5-point scale (excluding don't knows)



Source: ETC Institute (2019)

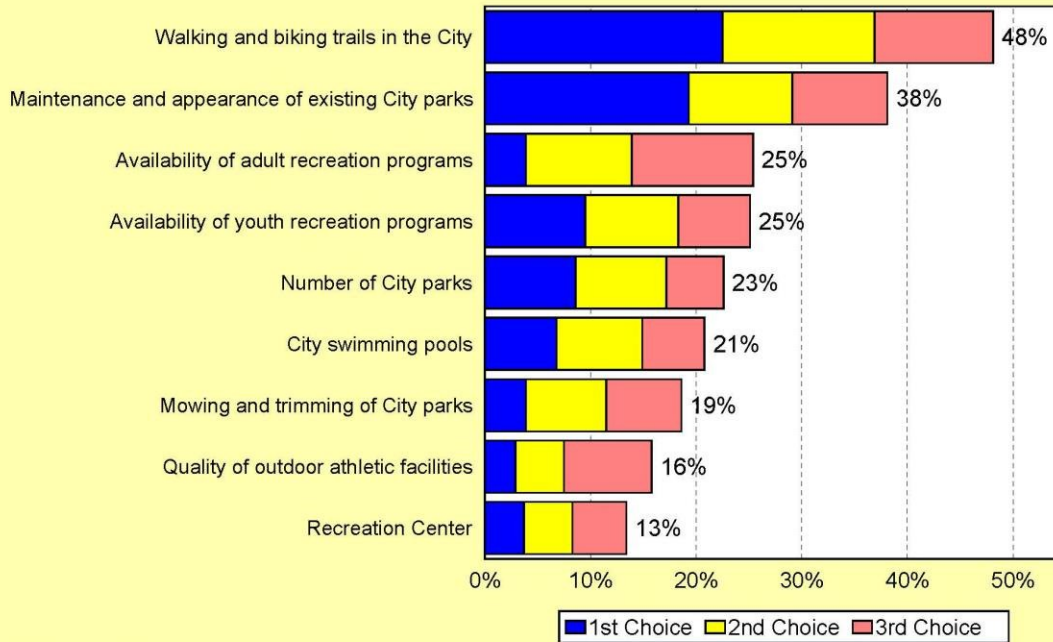
ETC Institute (2019)

Page 10

Residents were also asked which parks and recreation services should receive the most emphasis over the next two years and 48% of respondents chose walking and biking trails, while 38% chose maintenance and appearance of existing city parks, and 25% chose availability of adult recreation opportunities.

## Q6. Parks and Recreation Services That Should Receive the Most Emphasis Over the Next Two Years

by percentage of respondents who selected the item as one of their top three choices



Source: ETC Institute (2019)

ETC Institute (2019)

Page 11

City staff has also completed numerous presentations at regular City Council meetings and special budget retreats regarding parks and recreation topics. Staff has also held public meetings with residents on special topics: Hilltop/Homestead Park meeting with Fairhaven HOA – 9/21/20, Hilltop/Homestead Park meeting with The Links at Scenic Hills HOA – 10/8/20, Hilltop/Homestead Park meeting with STORM – 10/30/20, Hilltop/Homestead Park – 5/10/21, and Wendy Swan Memorial Park Pool to Splash Pad Conversion - 7/19/21.

### Original 2014 Survey

There are several results from the 2014 Master Plan survey that are driving our direction in the department still today.

Question 9 Which of the following best describe how you perceive the need for greenways, which would include trails for walking, biking, and running, that would interconnect many areas, parks, and school facilities within the City of Schertz.

94% of survey respondents placed an important need for established greenways, including bicycle, walking, and running trails designed to interconnect various areas and facilities within the city. These results support staff efforts today in 2021 on the development of the trail network in Schertz and the construction of the Great Northern Trail, in addition to the planning efforts of the Cibolo Creek Trail, the Woman Hollering Creek Trail, the Dietz Creek Trails, and the Dry Comal Creek Trail.

Question 17 In which recreation programs or activities would you or members of your household be most interested in participating?

	Activity	Percentage of respondents Interested
1	Hiking	89.90%
2	Biking	87.50%
3	Health/Wellness Programs	86.00%
4	Fitness Classes	83.40%
5	Fishing	74.70%
6	Water Exercise	73.10%
7	Nature Study	69.80%
8	Swim Lessons	64.20%
9	Dance Classes	60.50%
10	Tennis	55.60%
11	Soccer	53.90%
12	Basketball	52.30%
13	Football	52.30%
14	Volleyball	49.30%
15	Sand Volleyball	48.80%
17	Baseball-T/ball	46.00%
18	Racquetball	44.90%
19	Softball	42.20%
20	Competition swim team	41.00%
21	Gymnastics	40.00%
22	Youth Wrestling	20.10%
23	In-Line hockey	17.20%

The top two results of Hiking and Biking, further support the efforts of city staff to develop the trail network in the city and expand hiking and biking opportunities. Our partnership with the YMCA provides many health and wellness programs and fitness classes available to residents so that arrangement is justified by those items being number 3 and 4 on this activities list. Number 5 on the list is Fishing and Number 7 on the list is Nature Study and those are 2 activities that we provide at Crescent Bend Nature Park and plan to offer at the future Hilltop/Homestead Park (in addition to hiking and biking.)

Question 18 Do you feel that there is a definite need, somewhat, or not a need for any of the following ATHLETIC facilities that would be added to existing parks or in future parks in the City of Schertz?

	Facility	Ranking
1	Running Tracks	1.79
2	Basketball Courts	2.18
3	Tennis Courts	2.20
4	Volleyball Courts	2.24
5	Practice Athletic Fields	2.30
6	Soccer Fields	2.37

7	Football Fields	2.47
8	Baseball Fields	2.55
9	Softball Fields	2.57

Since the release of the 2014 Master Plan, the city has acquired Rhine Valley Park and a basketball court, and two practice soccer fields were developed in that park as progress towards meeting these goals of additional athletic facilities in the city.

Question 19 Do you feel there is a definite need, somewhat, or not a need for any of the following RECREATION facilities that would be added to existing parks or in the future parks in the City of Schertz?

	Recreation Program	Ranking	2021 Notes
1	Hike/Bike Trails	1.42	
2	Natural/Open Spaces	1.49	
3	Fitness Trail with Exercise Stations	1.68	Constructed in 2018
4	Indoor Swimming Pool	1.75	Constructed in 2016
5	Picnic Pavilions	1.81	
6	Fishing Areas	1.87	
7	Playgrounds	1.88	
8	Water Park/Children Water Playground	1.93	
9	Outdoor Swimming Pool	1.97	
10	Botanic/Flower Garden Areas	2.02	
11	Senior Centers	2.03	
12	Skateboard Park	2.22	
13	Amphitheater	2.24	
14	Disc Golf	2.43	
15	Horseshoe Pits	2.46	

This question has served as the city’s “Top Priorities” list for new amenities to add to the system in addition to a priority on deferred maintenance and additional adult recreational opportunities. Since the plan was created, the city has constructed the Schertz Aquatics Center in 2016, and the outdoor exercise stations in Mary Whitfield Burks Park off of the Schertz Parkway Trail System in 2018, filling the need for the #3 and #4 priorities in the City of Schertz. All other priorities have now shifted up the list so the Top 5 amenities desired in parks are now listed below. Recent results from the Citizen Satisfaction Survey support the same priorities with Hike/Bike Trails still being number one in those studies as well.

1. Hike/Bike Trails
2. Natural/Open Spaces
3. Picnic Pavilions
4. Fishing Areas
5. Playgrounds

## Chapter 6 Desired State

### Summary of Park Needs

Park Type	Level of Need
Neighborhood Parks	Low need for additional neighborhood parks
Community Parks	High need for additional community park space in north and south sectors
Regional Parks	Low need for additional regional park space
Linear Parks	High need to develop specific locations of linear parks along drainage areas to improve connectivity
Pocket Parks	Low need to develop additional pocket parks at this time
Special Purpose Parks	Low need to develop additional special purpose parks at this time

The Park Land Needs Summary found on Page 6.17 in the 2014 Parks Master Plan is still relevant today. There is a high need for community parks and linear parks which justifies the current focus on developing Hilltop/Homestead Park in the North, Woman Hollering Creek Park (Hallie's Cove) and Graytown Valley Park in the South, and the development of the Great Northern Trail and city-wide trail network.

### Facilities Target Level of Service

**Athletic fields** and practice fields are not addressed in this update as they have not been a focus of any survey or public meetings in the last 5 years. In 2014 we had a low or medium need for competition fields and a high need for practice space. We have added in a few practice fields for soccer with the addition of Rhine Valley Park and the renovation of Ashley Park. Practice fields for baseball/softball will be added into future parks planned in The Parklands neighborhood and the Graytown Valley neighborhood. The need for Athletic Field Facilities will be reassessed in the new Parks Master Plan that is being planned as part of the city's overall Comprehensive Land Use Plan.

**Rental Pavilions** were addressed on Page 6.35 in the 2014 Master Plan and the current level of need was determined to be low in 2014 and all pavilions were located in the central sector of Schertz, but the future level of need was determined to be medium, and we needed to explore additional rental pavilion opportunities in other portions of the city. This remains true today as our pavilion rental numbers have increased and pavilions are booked months in advance. Additional picnic pavilions available for rental are planned for Ashley Park, Crescent Bend Nature Park, and Hilltop/Homestead Park to address this need.

**Playscapes** level of need was determined to be low for playscapes in general, but the future level of need for playscapes in specific areas to reduce gaps in service and achieve the desired ½ mile service radius goal was determined as high in 2014. This remains true today based on the service gaps that still exist and the growth that the community has seen in the last 7 years. Playscapes have been added in Rhine Valley Park and Heritage Oaks Park in southern Schertz, and Cypress Point Park in northern

Schertz, with additional playscapes planned for the park in The Parklands neighborhood, Hilltop/Homestead Park, Woman Hollering Creek Park (Hallie's Cove), and Graytown Valley.

**Swimming Pools** were addressed on Page 6.42 of the 2014 Master Plan and all pools in the city were used for planning purposes (municipal, HOA, and apartment pools) except the proposed Indoor Aquatics Center which was not yet designed. The current level of need was determined as low, and the future level of need was determined as a medium need for revitalizing existing outdoor pools to improve utilization and possibly support growth in the southern sector. With the construction of the Schertz Aquatics Center in 2016 the city has added more square yards of pools adding to the surplus of square yards that already existed in 2014 based on national standards per population.

**Splash Pads** were also addressed in the 2014 Master Plan and the recommended level of service was 1 splash pad per every 25,000 residents. The population in 2014 was 31,560 so the city was at a 79% level of recommended service, but the future need based on growth determined that a target of 2 splash pads would be recommended by 2020 with a projected population of 44,505 and there would still technically be a deficit of 1 splash pad based on population.

**Trails** were addressed on Page 6.47 and the current level of need in 2014 was determined as High. It was determined the city has a substantial amount of trails and areas that could support trail development, however connectivity remains an issue. Trail development along linear greenbelts, creeks, and utility easements should be one of the major priorities for connectivity of existing pathways and to provide connectivity and better access to existing facilities. This remains true today based upon the results of our two Citizen Satisfaction Surveys showing residents still list hike/bike trails as the number one item they'd like to see more of and based on the many comments and discussions we've had at Parks & Recreation Advisory Board meetings and other public input meetings. City staff has focused on the development of the Great Northern Trail and the construction of the first phase of that trail from Schertz Parkway to Wiederstein Road connecting to Forest Ridge Park. A second segment of the trail has been designed and the city is acquiring easements for that portion of the trail to be constructed.

#### On-Going Planning and Development Efforts in Schertz

All current park and recreation projects listed in the 2014 Master Plan have been completed: the renovation of Schertz Ballpark (now Johnie McDow Sports Complex), the renovation of the Schertz Soccer Complex, the construction of a city dog park, the construction of a city skate park (Phase I only), and the construction of a natatorium (now Schertz Aquatics Center.)

## Chapter 7 Goals & Objectives

Goal 1: Provide a diverse blend of parks, recreation, and open space areas to accommodate the current and future needs of Schertz residents.

- Objective A: Provide, maintain, and enhance existing parks and recreation facilities.
- Objective B: Acquire and provide adequate parks, recreation, and open space opportunities for all persons.
- Objective C: Use AICUZ areas for a series of parks and recreational uses, or as a major regional recreational area.
- Objective D: Make provisions for the use of other areas for recreational uses or parkland.
- Objective E: Provide a geographic distribution of parks and recreation facilities that will provide equal opportunity and access for all residents.
- Objective F: Establish cooperative agreements with other governmental jurisdictions and educational bodies.
- Objective G: Encourage private sector participation in the provision of parks and recreation opportunities.

Goal 2: Encourage the conservation of natural resources through acquisition of parks and recreation areas, preservation of open space, and environmentally sensitive planning.

- Objective A: Encourage the conservation of environmentally sensitive areas, such as floodplains, wetlands, wildlife habitats, and areas with difficult topography or severe soil limitations, through development incentives, regulations, and policies adopted by the City.
- Objective B: Encourage the preservation of open space to enhance the livability, aesthetic quality, and natural beauty of Schertz.
- Objective C: Utilize natural waterways to provide water-oriented recreation opportunities within the community.
- Objective D: Develop a network of pedestrian and bicycle ways throughout Schertz and neighbors, including an interconnected system of multi-purpose paths, trails, and lanes.

Goal 3: Encourage and promote a variety of recreational opportunities including cultural activities, community activities, and special events, to enhance recreation and education opportunities for residents and tourists.

- Objective A: Maintain, secure, and manage existing and future parks and open space in a manner that encourages appropriate use.
- Objective B: Provide recreation opportunities that meet the passive, active, social, and cultural needs of all residents and tourists.
- Objective C: Expand and enhance youth and teen recreation programs and facilities to meet the current and future needs of the community.
- Objective D: Implement a parks and recreation improvement program, including redevelopment of existing areas, and maintenance, improvement, and renovation of all public areas and facilities.

Priority Capital Improvement Actions were also identified in the 2014 Master Plan and those are:

1. Build & Connect trails to support connectivity throughout the city.
2. Construct soccer practice locations.
3. Construct baseball practice locations.
4. Construct new and renovate existing outdoor basketball courts.
5. Construct outdoor volleyball courts.
6. Obtain additional dedicated open space.
7. Build Phase II and Phase III of the Schertz Skate Park.
8. Construct an additional Splash Pad.
9. Construct a Disc Golf Course in the city.
10. Improve fishing access at Cibolo Creek & Crescent Bend Nature Park.

Since 2014 the city has made progress on these capital improvement actions, so the list is slightly updated, and unmet needs have moved up the list. The city has only initiated construction on one segment of The Great Northern Trail and is working on acquiring easements for a second section. Work to create connectivity is still on-going and with hike/bike trails consistently being #1 in citizen surveys, this remains as the #1 capital improvement action.

Dedicated soccer practice locations have been added to Rhine Valley Park, Thulemeyer Park, and Ashley Park, and pop-up practices have been allowed at Forest Ridge Park and Pickrell Park. Additional soccer practice locations will be constructed at the new park in The Parklands neighborhood in 2022. Additionally, the YMCA is playing less games at the Schertz Soccer Complex with the construction of the new athletic complex in neighboring Cibolo, thus there is additional practice space available there. With all of these changes, practice soccer fields have been moved down the priority list for now.

Baseball practice locations are planned at the new park in The Parklands neighborhood (2022) and at the new park in the Graytown Valley neighborhood (2023.) The existing asphalt basketball court at Ashley Park was demolished and a new concrete court with acrylic coating was constructed. In addition, the basketball courts at Pickrell Park Large Pavilion were renovated with new acrylic coating, striping, new hoops, and limestone block seating. A new basketball court was added at Rhine Valley Park, and there are basketball courts planned at Heritage Oaks Park and the new park in The Parklands neighborhood. The basketball court at Wendy Swan Memorial Park is also on the list to be renovated in FY 21-22. Because of the additional updates to baseball and basketball facilities already completed or underway, these items have been removed from the priority list for now.

The updated 2021 Priority Capital Improvement Actions list is as follows:

1. Build & Connect trails to support connectivity throughout the city.
2. Construct outdoor volleyball courts.
3. Obtain additional dedicated open space.
4. Build Phase II and Phase III of the Schertz Skate Park.
5. Construct an additional Splash Pad.
6. Construct a Disc Golf Course in the city.
7. Improve fishing access at Cibolo Creek & Crescent Bend Nature Park.
8. Construct soccer practice locations.
9. Construct baseball practice locations.
10. Construct new and renovate existing outdoor basketball courts.