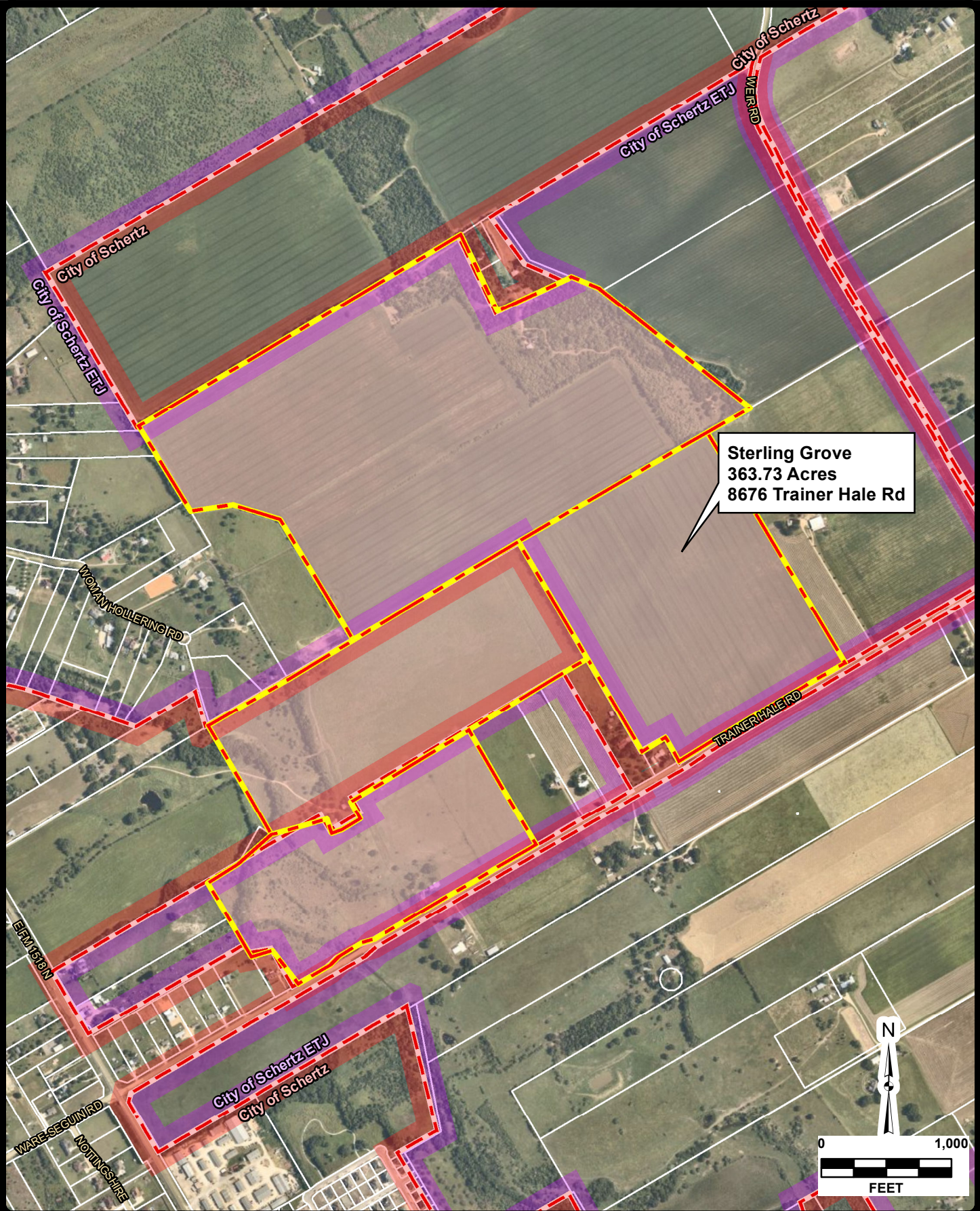


APERIAL IMAGERY PROVIDED BY GOOGLE © UNLESS OTHERWISE NOTED. Imagery ©2021, CAPOCOG Digital Globe, Texas Orthomography Program, USDA Farm Service Agency.

Date: Oct 20, 2021 11:42:10 AM User: S.Dunlap
File: C:\Users\S.Dunlap\Documents\Projects\2021\101_Comp\Plan_TrainerHale\Schertz\MXD\101_LocMap_8.5x11.mxd



Sterling Grove
363.73 Acres
8676 Trainer Hale Rd

JOB NO.	---
DATE	Oct 2021
DESIGNER	HF
CHECKED	HF DRAWN SD
SHEET	1.0

EXHIBIT 1: LOCATION MAP
CITY OF SCHERTZ (ETJ), TEXAS

Pape-Dawson ENGINEERS

NEW BRAUNFELS | SAN ANTONIO | AUSTIN | HOUSTON | FORT WORTH | DALLAS
 1672 INDEPENDENCE DR, STE 102 | NEW BRAUNFELS, TX 78132 | 830.632.5633
 TEXAS ENGINEERING FIRM #470 | TEXAS SURVEYING FIRM #10028800

THIS DOCUMENT HAS BEEN PRODUCED FROM MATERIAL THAT WAS STORED AND/OR TRANSMITTED ELECTRONICALLY AND MAY HAVE BEEN INADVERTENTLY ALTERED. RELY ONLY ON FINAL HARD COPY MATERIALS BEARING THE CONSULTANT'S ORIGINAL SIGNATURE AND SEAL.