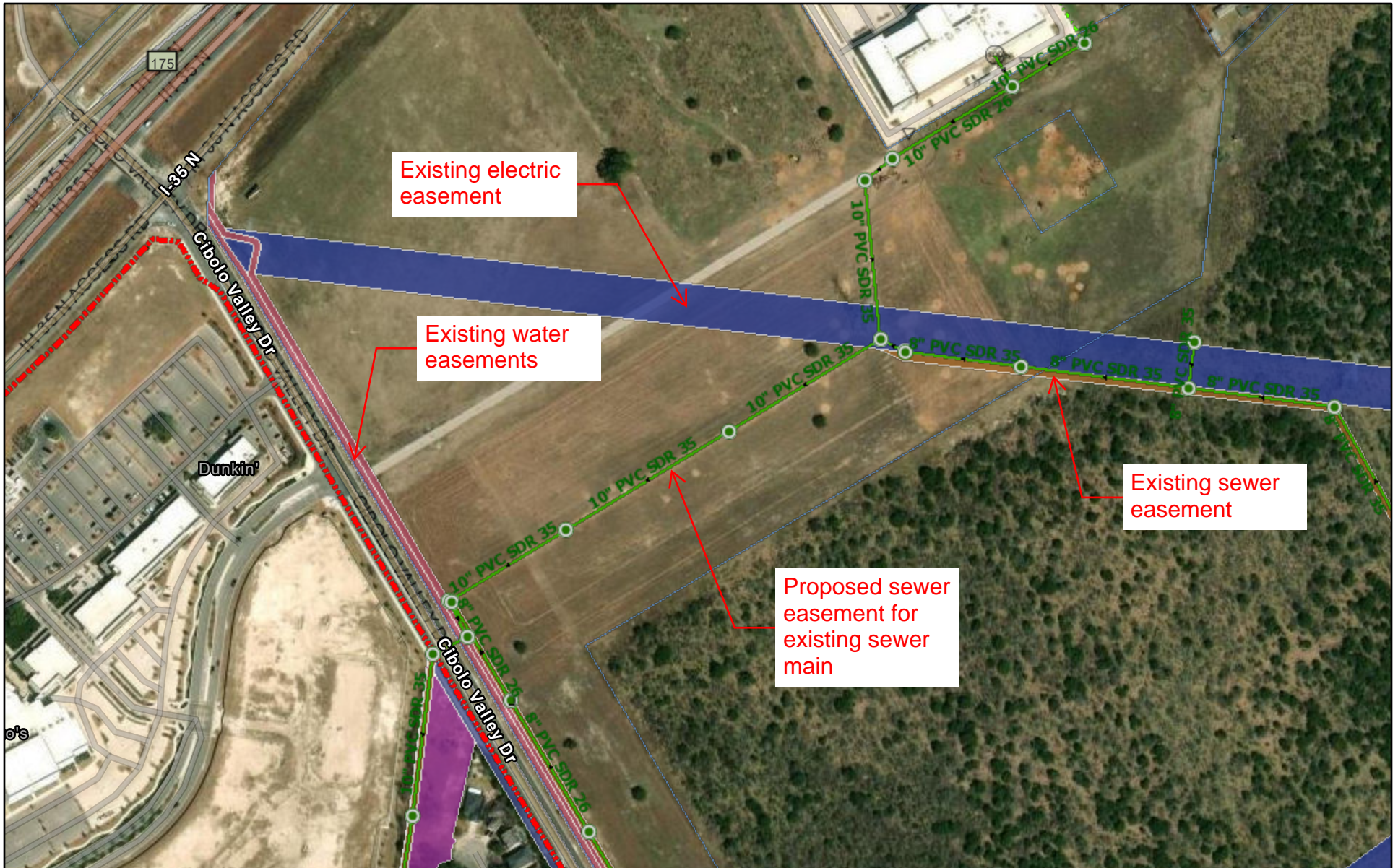
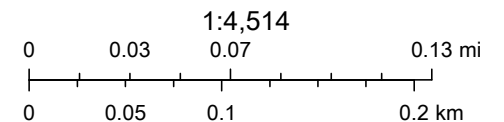


0.657 Acre Sewer Easement



8/29/2022, 9:23:06 AM

Sewer Main	— Neighboring Gravity	- - - Private Pressure	Sewer Laterals	— Abandoned
— Schertz Gravity	- - - Neighboring Pressure	— Abandoned Gravity	— <all other values>	— Sewer Structures
- - - Schertz Pressure	— Private Gravity	- - - Abandoned Pressure	— Active	— Undetermined



Esri Community Maps Contributors, City of Cibolo, Texas, City of New Braunfels, BCAD, Comal County, Texas Parks & Wildlife, © OpenStreetMap,

Schertz Public Works