



City Council Workshop, January 10, 2023
Lauren Shrum, Director of Parks, Recreation &
Community Services

SCHERTZ | COMMUNITY
SERVICE
OPPORTUNITY

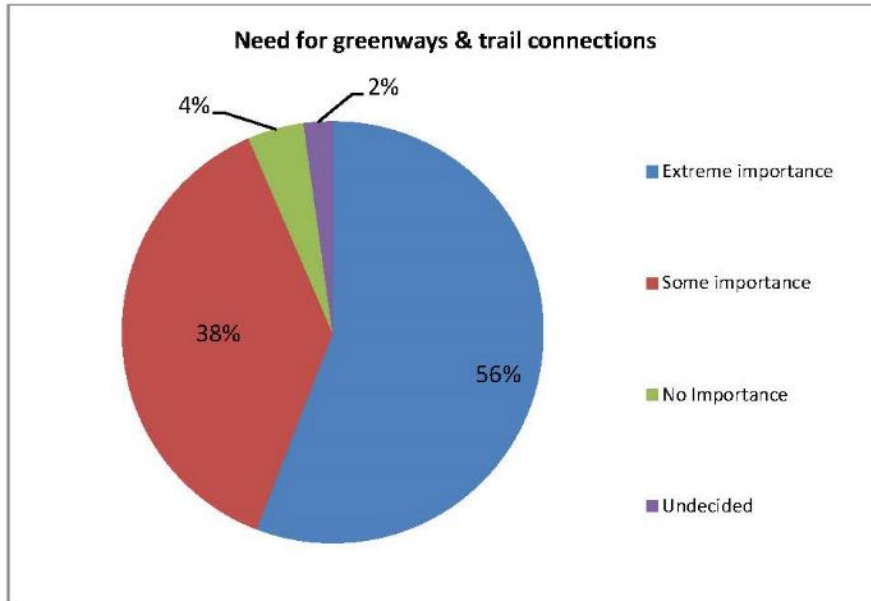
SCHERTZ
PARKS &
RECREATION
FUN

Why Trails?

- Citizen Input has been driving development of hike and bike trails
- Natural, Community, Health, and Economic Benefits to trails
- It only takes 25 feet to make a park!
- What are the common concerns?
- What are the realistic outcomes after trail development?
- Vision for the Future

Parks Master Plan 2014

Question 9 – Which of the following best describe how you perceive the need for greenways, which would include trails for walking, biking, and running, that would interconnect many areas, parks and school facilities within the City of Schertz.



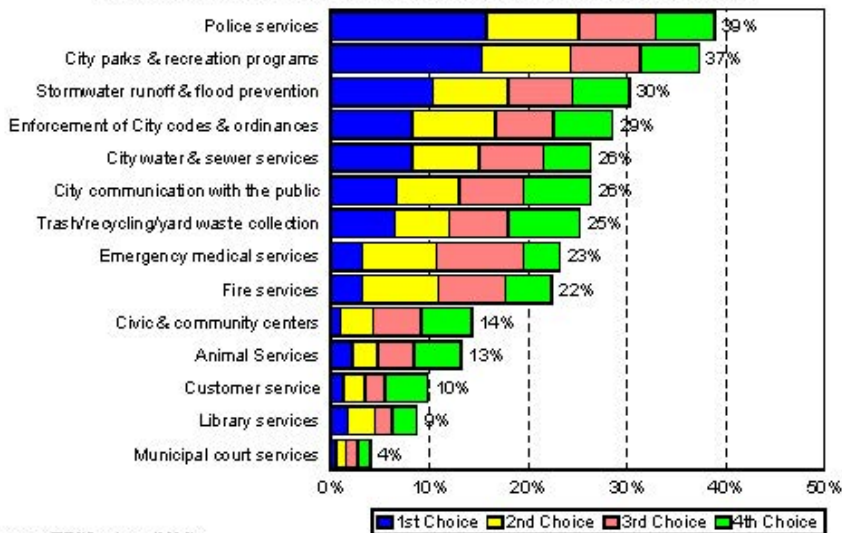
Question 17 – In which recreation programs or activities would you or members of your household be most interested in participating?

Activity	Percentage of respondents Interested
Hiking	89.90%
Biking	87.50%
Health / Wellness Programs	86.00%
Fitness Classes	83.40%
Fishing	74.70%
Water Exercise	73.10%
Nature Study	69.80%
Swim Lessons	64.20%
Dance Classes	60.50%
Tennis	55.60%
Soccer	53.90%
Basketball	52.30%
Football	50.00%
Volleyball	49.30%
Sand Volleyball	48.80%
Baseball-T/ball	46.00%
Racquetball	44.90%
Softball	42.20%
Competition swim team	41.00%
Gymnastics	40.00%
Youth Wrestling	20.10%
In-Line hockey	17.20%

Citizen Satisfaction Surveys 2016

Q2. City Services That Should Receive the Most Emphasis Over the Next Two Years

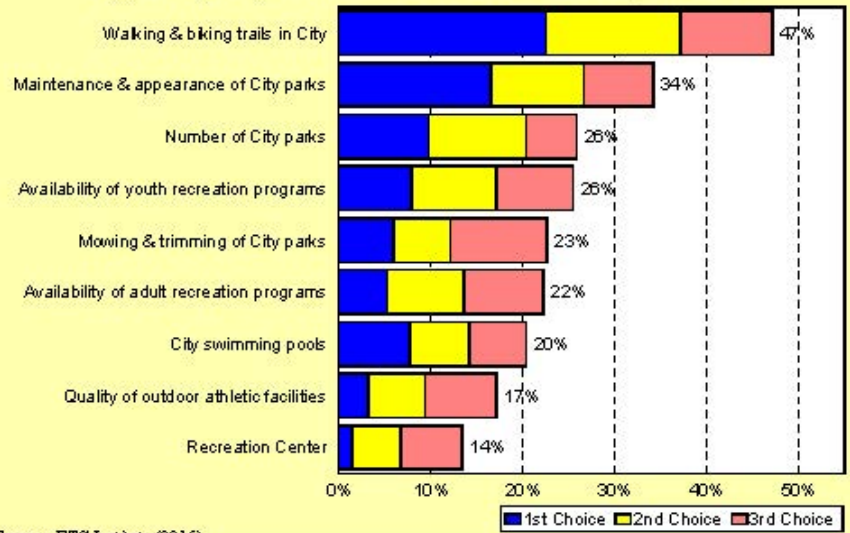
by percentage of respondents who selected the item as one of their top four choices



Source: ETC Institute (2016)

Q6. Parks and Recreation Services That Should Receive the Most Emphasis Over the Next Two Years

by percentage of respondents who selected the item as one of their top three choices



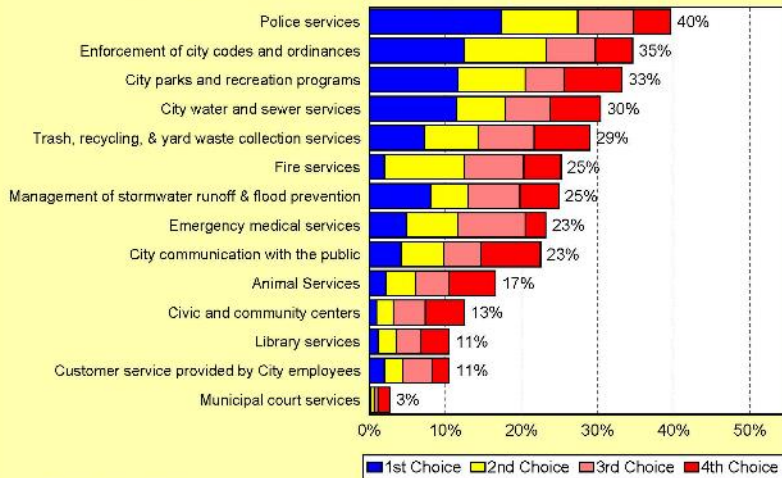
Source: ETC Institute (2016)

Citizen Satisfaction Surveys 2019

2019 Schertz Community Survey: Findings Report

Q2. City Services That Should Receive the Most Emphasis Over the Next Two Years

by percentage of respondents who selected the item as one of their top four choices



Source: ETC Institute (2019)

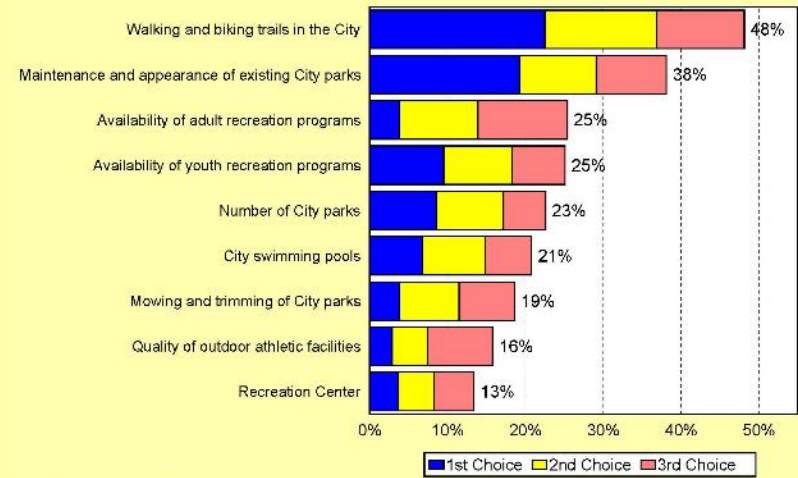
ETC Institute (2019)

Page 4

2019 Schertz Community Survey: Findings Report

Q6. Parks and Recreation Services That Should Receive the Most Emphasis Over the Next Two Years

by percentage of respondents who selected the item as one of their top three choices



Source: ETC Institute (2019)

ETC Institute (2019)

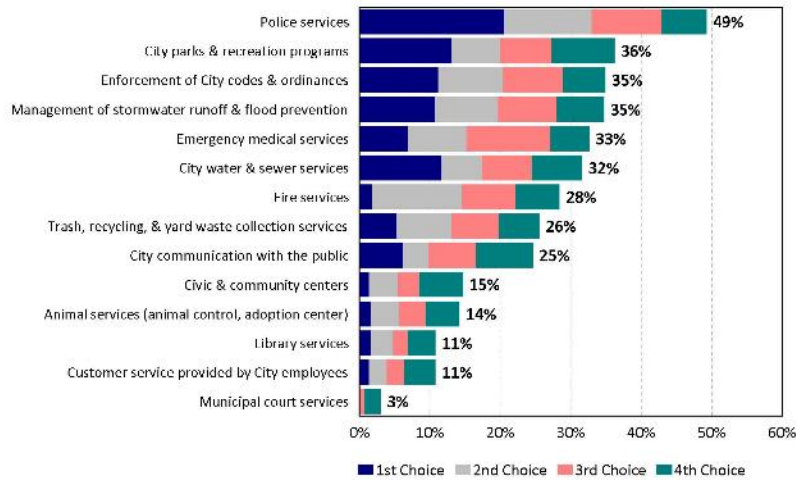
Page 11

Citizen Satisfaction Surveys 2021

2021 Schier Community Survey: Findings Report

Q2. City Services That Should Receive the Most Emphasis Over the Next Two Years

by percentage of respondents who selected the item as one of their top four choices



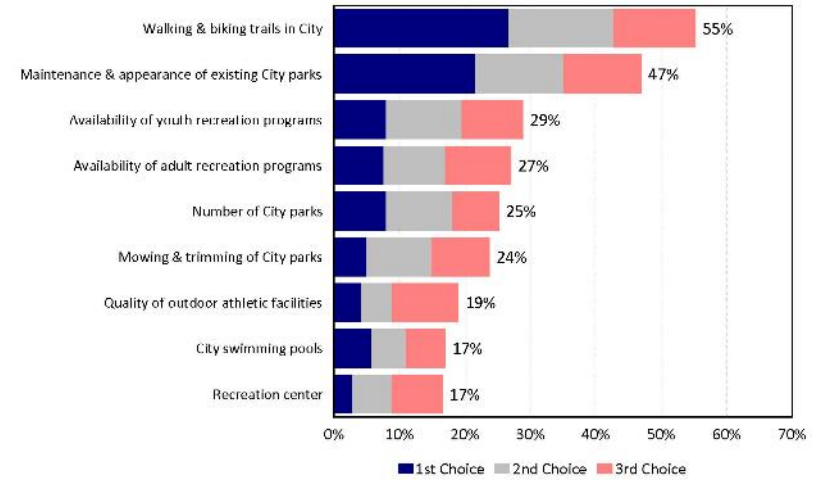
ETC Institute (2021)

Page 4

2021 Schier Community Survey: Findings Report

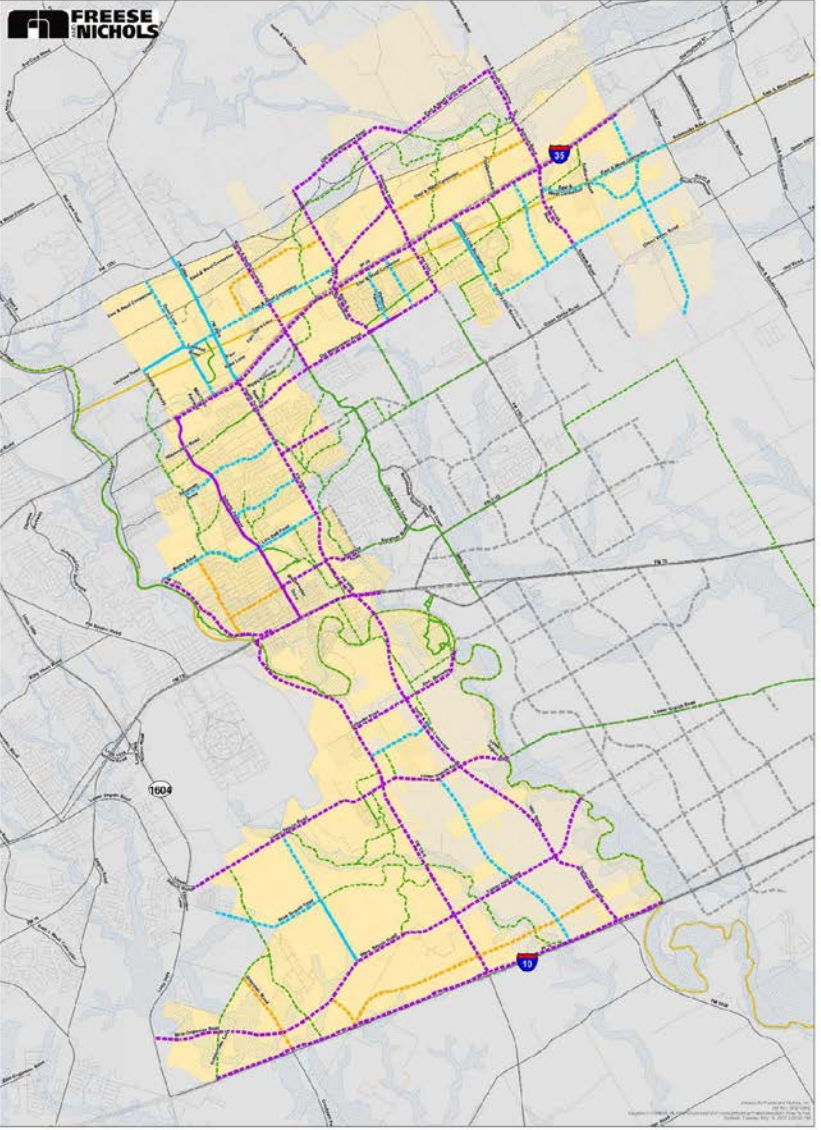
Q7. Parks and Recreation Services That Should Receive the Most Emphasis Over the Next Two Years

by percentage of respondents who selected the item as one of their top three choices



ETC Institute (2021)

Page 11





**2017 Schertz
Transportation Plan
Trails Network**

— Shared-Use Path	 FEMA Floodplain
— Bike Lane	 Schertz City Limits
— Signed, Shared Roadway	 Schertz ETJ
— Off System Trails in own ROW	
— Proposed Trail or Path	



1 inch = 2,500 feet
0 1,000 2,500 5,000 7,500 Feet

Figure 5. Bikes, Trails and Recreation Network

Natural Benefits

- Preserving land protects a community's land and water
- Public green space cleans the air
- Saving habitat protects wildlife

Community & Health Benefits

- Green space has measurable effects on mental health
- Numerous studies show green space reduces anxiety
- Trails are great opportunities to get necessary exercise
- More exercise lowers an area's healthcare cost

Economic Benefits

- Trails are drivers of tourism
- New parks attract businesses
- Trails create opportunities for short distance trips, reducing time and money lost to congestion
- New green space and trails raise property resale value



- 5' for cycling and pedestrian amenities
- 5'-6' for a pedestrian walkway with wayfinding
- 1'-2' for a planted barrier
- 10' for a painted cycle track
- 3'-5' for lighting, shading, and planting

IT ONLY TAKES
25 FEET

TO MAKE A
PARK



Common Concerns Not In My Backyard (NIMBYism)

- Very common, well-documented phenomenon that occurs with new development
- Cell phone towers, retail construction, housing developments, highway extensions, skate parks, bike paths, etc.
- The fear is that with change comes something undesirable; increased traffic from a new facility, loitering delinquents near the new skate park, or vandalism as a result of bike path access.

Not In My Backyard (NIMBYism)

- First section of the Great Northern Trail we had these concerns
 - Destroying wildlife habitat
 - Will drive undesirable wildlife into my yard (snakes, rats)
 - Losing privacy
 - Criminal activity will increase
- The worst fears have not come to fruition
- Positive feedback
- Well used trail



Not In My Backyard (NIMBYism)

- Live Oak Road sidewalks
- Hilltop Park
- Dry Comal Creek Trail
- What are the concerns
 - I like kids I just don't want them walking behind my house
 - Crime and vandalism will increase
 - People who are homeless will take over the area
 - Dumping and trash
- The worst fears have not come to fruition
- Crime Prevention Through Environmental Design (CPTED)



Positive Trail Outcomes

- Neighborhood Connections (Trailheads) for residents in neighborhoods to access the trail
- Positive examples in multiple cities
- Successful greenway systems
- Trail, greenway, linear park are all synonymous terms

Kerrville



New Braunfels



College Station



Boerne



San Antonio – Leon Creek



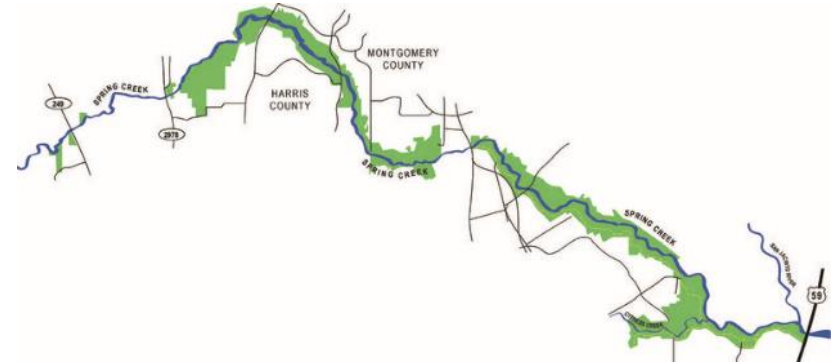
San Antonio – Salado Creek



Austin

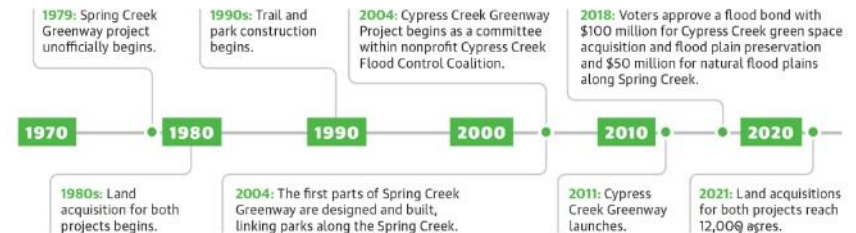


Positive Trail Outcomes



DECADES in the making

Although the greenway projects were conceived in the late 1970s, planning, land acquisition and construction will likely continue for many years to come.



Vision for the Future



Vision for the Future



Vision for the Future



Vision for the Future

SCHERTZ - NORTHCLIFFE AREA | PRESERVED GREENSPACE AND TRAILS



Discussion