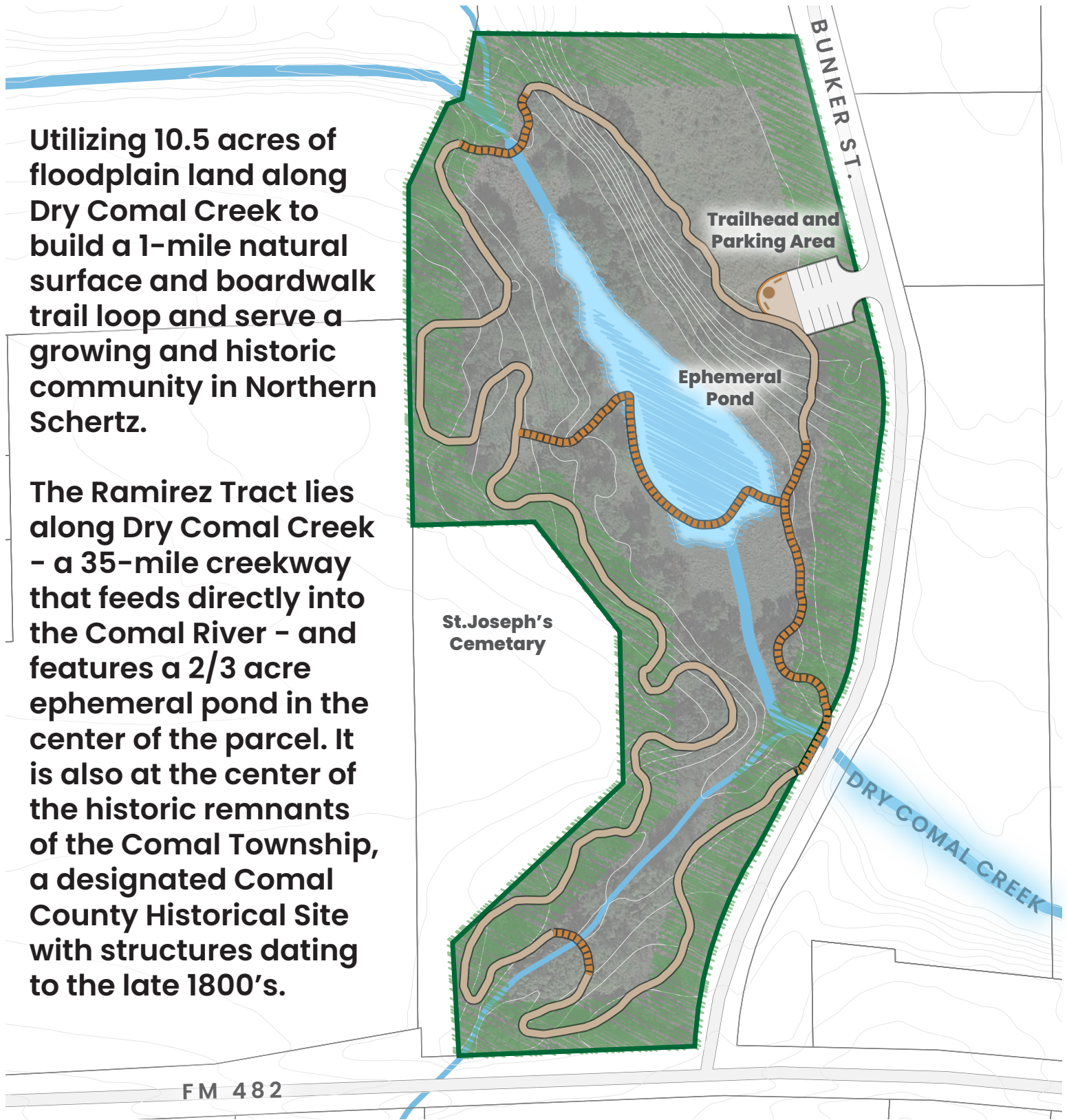


Ramirez Tract - Conceptual Plan

Utilizing 10.5 acres of floodplain land along Dry Comal Creek to build a 1-mile natural surface and boardwalk trail loop and serve a growing and historic community in Northern Schertz.

The Ramirez Tract lies along Dry Comal Creek - a 35-mile creekway that feeds directly into the Comal River - and features a 2/3 acre ephemeral pond in the center of the parcel. It is also at the center of the historic remnants of the Comal Township, a designated Comal County Historical Site with structures dating to the late 1800's.



Key:

- Ramirez Tract
 - Standing Water Level
 - Creekway
 - Roadway
 - Natural Surface Trail
 - Boardwalk Trail
-