

# MAIN STREET IMPROVEMENTS

---

CITY COUNCIL MEETING  
TUESDAY, FEBRUARY 20, 2024

**SCHIERTZ**  
COMMUNITY\*SERVICE\*OPPORTUNITY

Kimley»»Horn

# Agenda

---

1. Quick Project Recap
2. Engineering Design Concept
3. Landscape Design Concept
4. Illumination Standards
5. Coordination
6. Project Cost
7. Next Steps

# Quick Project Recap

---

- ✓ Completed Preliminary Engineering to develop initial design concept
- ✓ Met with the Main Street Committee multiple times to gather input and develop a vision for Main Street
- ✓ Submitted 70% design plans in 2023
- ✓ Coordinated with all impacted utilities. Aerial to underground and relocations.
- ✓ Ongoing TxDOT coordination

# Overall Layout



# Engineering Design Concept

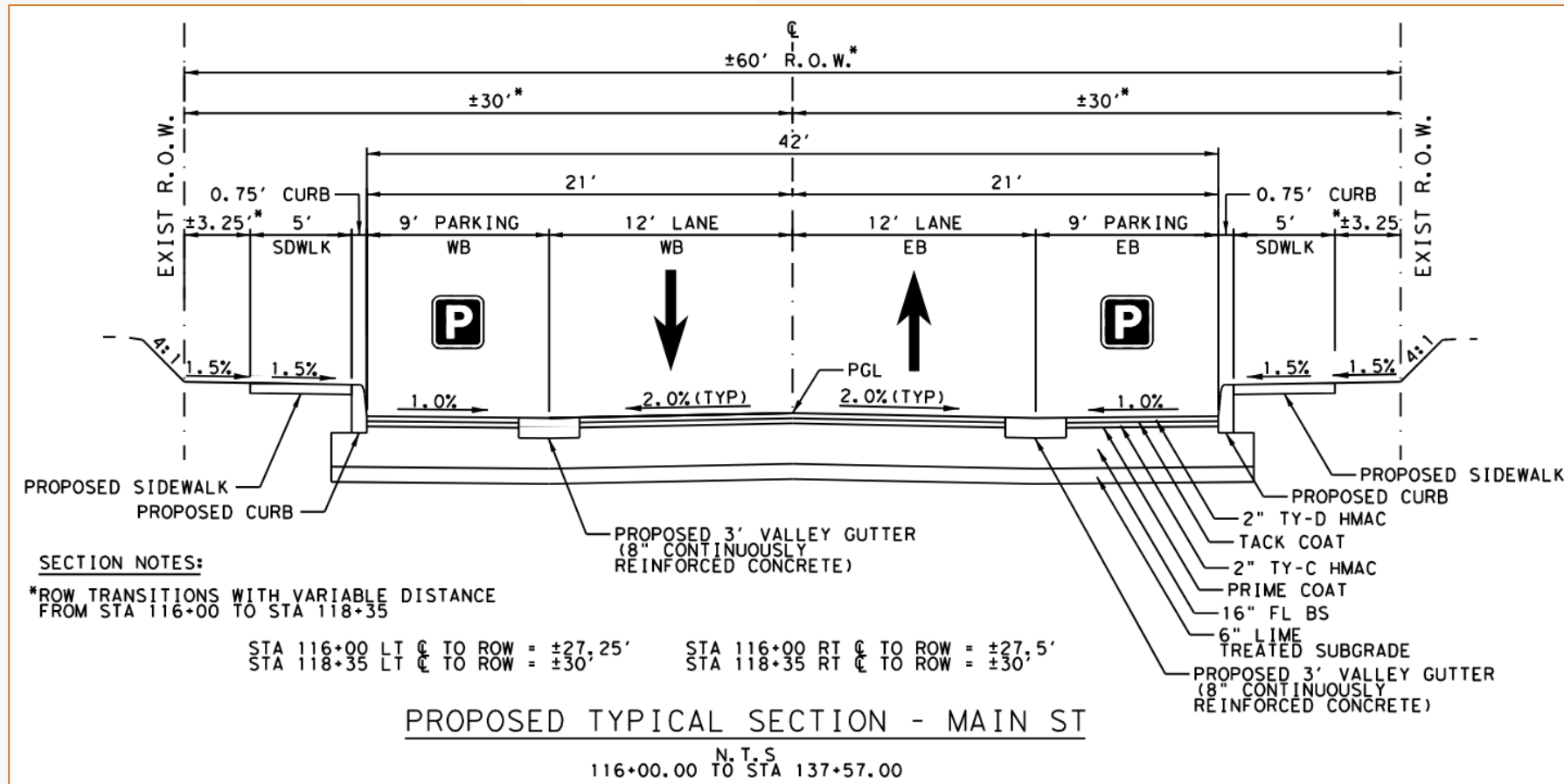
---

Summary of Design Items – Street Work

- Full depth pavement reconstruction
  - Lindbergh Avenue to Schertz Parkway
- Maximize street drainage and maintain limited drainage features
- Incorporate decorative pavement at key locations
- Incorporate pattern at crosswalks
  - Stamped/colored concrete in lieu of typical crosswalk striping or brick pavers
- Retaining walls as needed
  - Patterned face or decorative theme

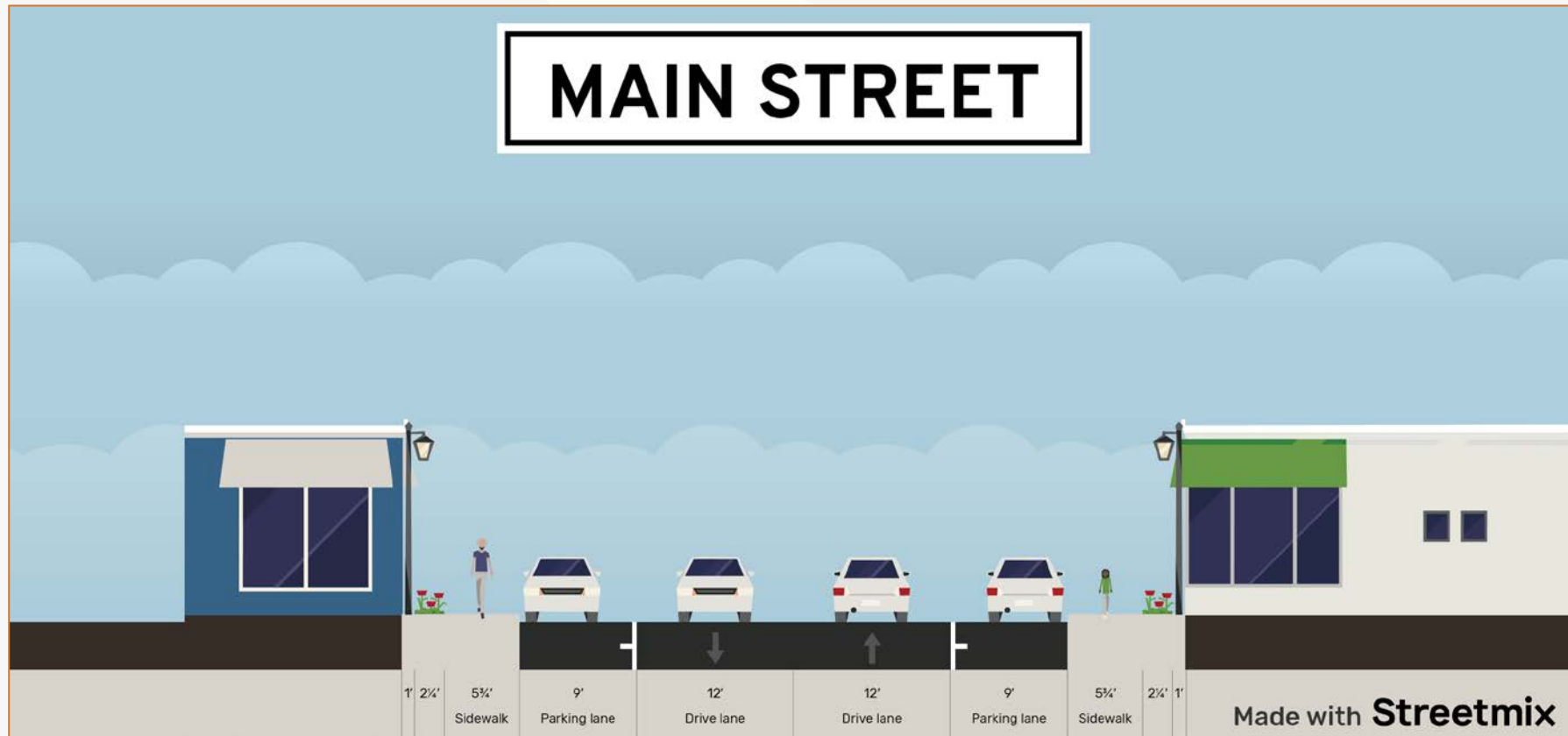
# Engineering Design Concept

## Typical Section



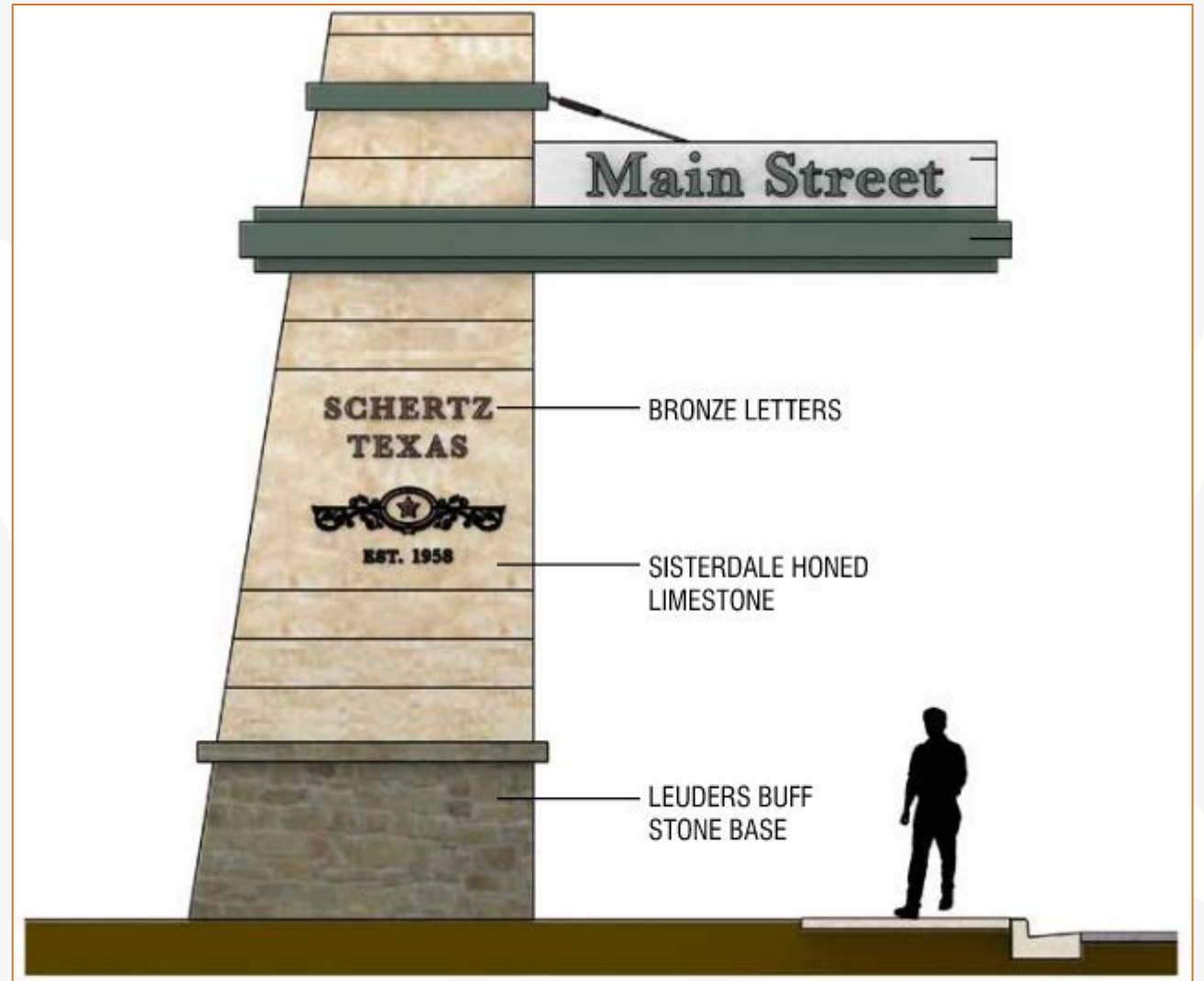
# Engineering Design Concept

Typical Section



# Landscape Design Concept

Overall Package

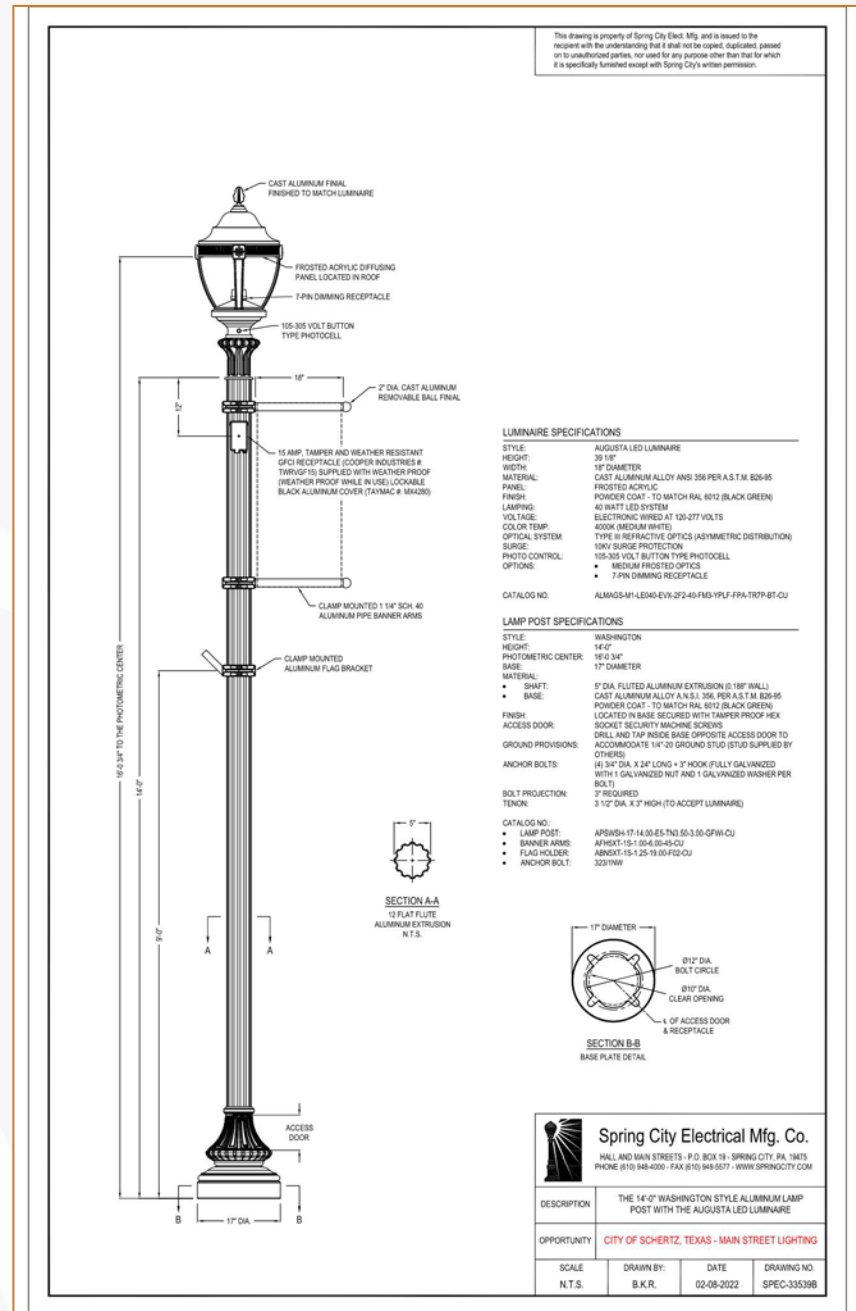


# Illumination Standards

## Pedestal Pole - Washington Style Aluminum Lamp



Light Pole  
Color

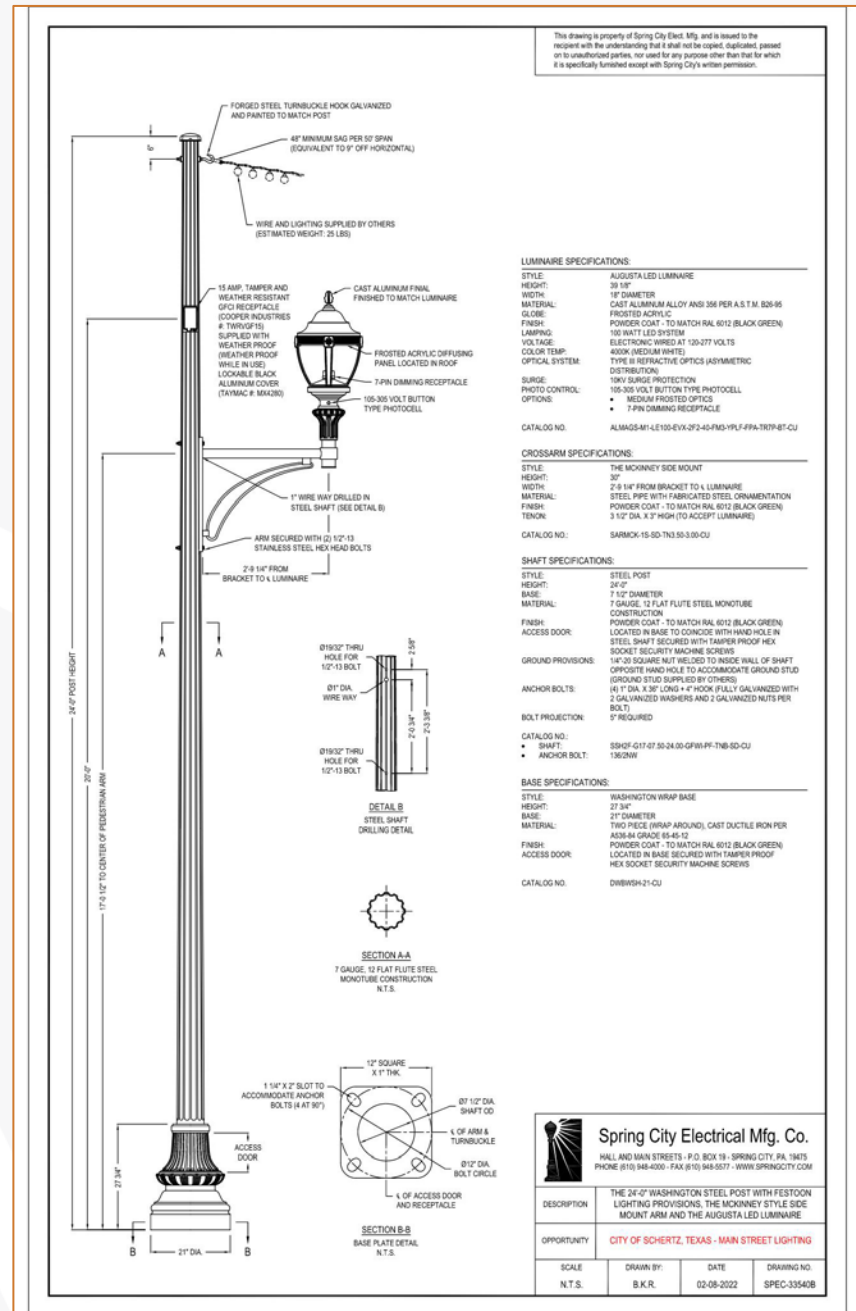


# Illumination Standards

## Festoon Pole - Washington Style Steel Post



Light Pole  
Color



# Coordination

---

## **Aerial Utilities**

- Relocating all aerial facilities underground within project limits
- Relocation will utilize shared duct bank
- Acquisition of utility easements will be required

## **Non-Communication Utilities**

- Sewer and water lines to be upgraded
- Centerpoint gas line to be upgraded

## **TxDOT**

- Portion of project limits are located within TxDOT right-of-way

# Refined Design Cost

An updated opinion of probable construction cost (OPCC) was developed to reflect the refined design concept:

- Required Infrastructure
  - Road, water/sewer and limited drainage
- Optional Infrastructure
  - Lighting and Landscape Features
- GVEC Aerial Relocations
- Shared-Use Duct Bank
- \*Does not Include Franchise Utility Reimbursement or Easement Acquisition

## Estimated Main Street Construction Cost

**Required Infrastructure - \$12.0 Million**

**Optional Revitalization - \$4.8 Million**

**GVEC Aerial Relocation - \$4.4 Million**

**Shared-Use Duct Bank - \$3.2 Million**

---

**TOTAL: \$24.4 Million\***

# Next Steps

---

- Obtain Council approval on Project
- Finalize remaining Architecture components
  - District identities, welcome sign, metal screens, wayfinding/signage
- Continue utility and TxDOT coordination and
- Finalize utility easements and begin easement acquisition process
- Develop construction plans for final concept
- Developed phased construction approach

The logo for Kimley»»Horn is displayed in white text on a dark blue background. The word 'Kimley' is followed by three right-pointing chevrons (»») and the word 'Horn'. Below the logo, the tagline 'Expect More. Experience Better.' is written in a smaller, sans-serif font. The background of the slide features abstract, overlapping shapes in shades of blue, orange, and grey.

# Kimley»»Horn

Expect More. Experience Better.

## Questions?

Stephen Aniol, P.E.  
Stephen.Aniol@kimley-horn.com  
(210) 321-3404