

CAPITAL IMPROVEMENTS ADVISORY COMMITTEE

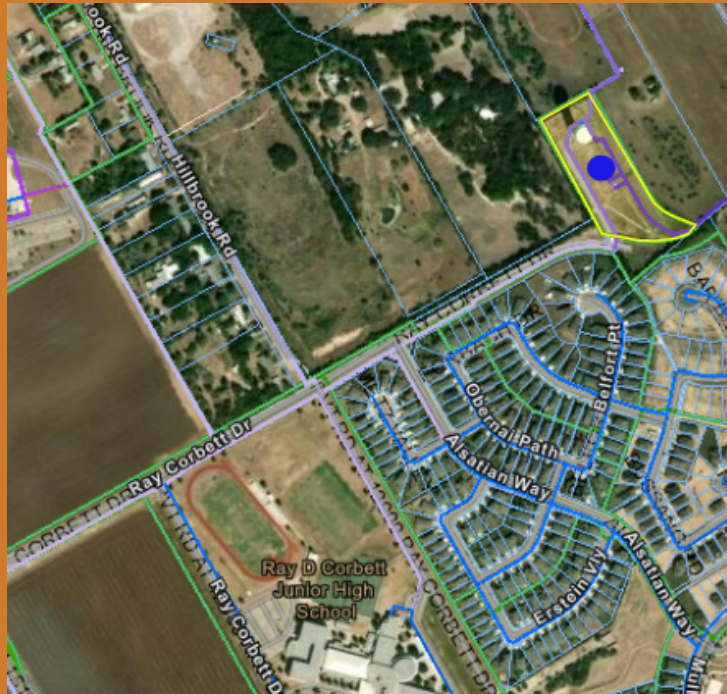
Semi-Annual Report – 2nd Half of Fiscal Year 2022-2023

SCHERTZ
COMMUNITY. SERVICE. OPPORTUNITY.

WATER FUND EXPENSES

- Corbett Ground Storage Tank
- City-wide Water Master Plan and Impact Fee Update
- Ware Seguin to Lower Seguin and Graytown to Pfeil Loop Lines
- Water Distribution Main from Fred Couples to Schwab Road

CORBETT GROUND STORAGE TANK



3-million gallon ground storage tank on Ray Corbett Drive

- Unintech Consulting Engineers, Inc.
- Pesado Construction Co., Inc.

Expenses this period =
\$641,187.27

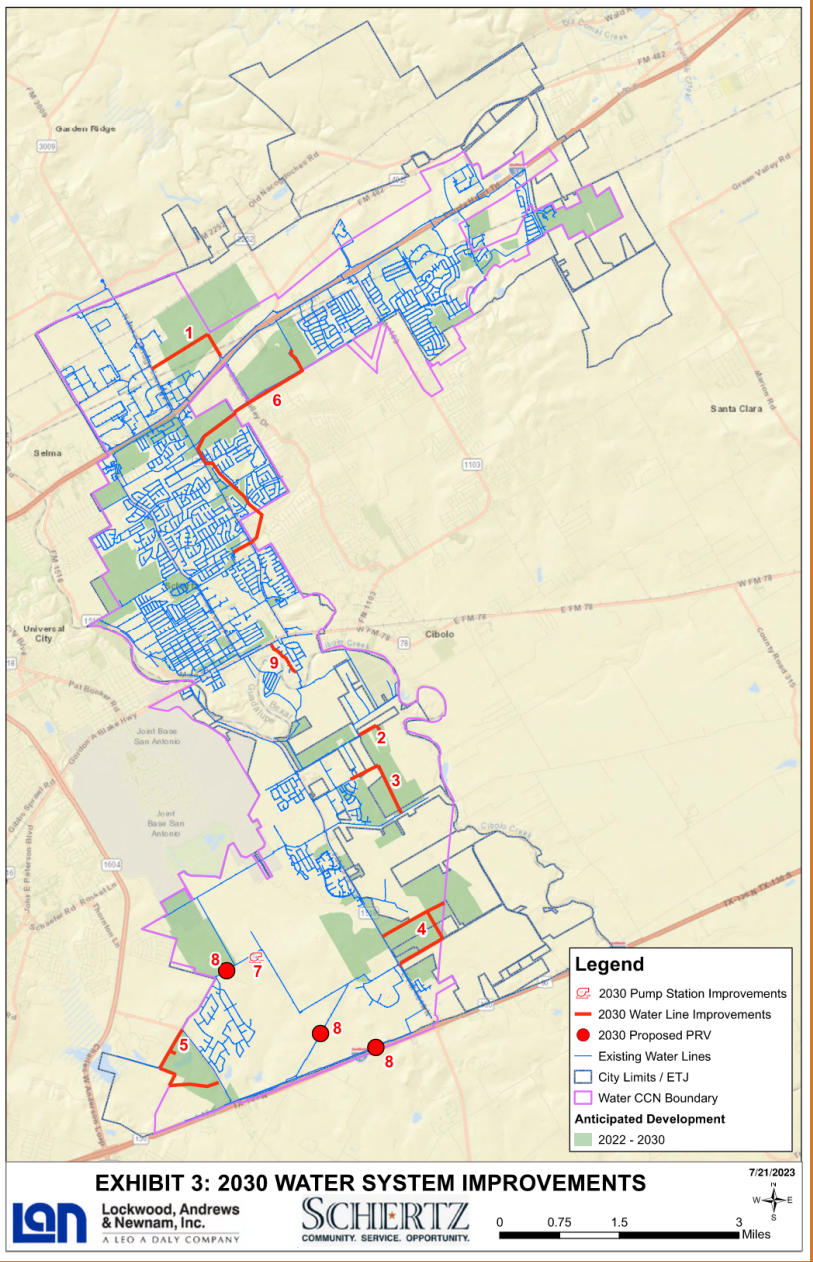
- Contractor Mobilized to Site
- Tank Structure Design Submittal Approved

CITY-WIDE MASTER PLAN AND IMPACT FEE UPDATE

- Lockwood, Andrews & Newnam, Inc.

Expenses this period =
\$10,175.25

- Capital Improvement Plan Draft
Submitted and Reviewed



WARE SEGUIN TO LOWER SEGUIN AND GRAYTOWN TO PHEIL LOOP LINES

Water Main Loop Lines

Description:
The City is planning to install 12-inch diameter water lines to provide a looped system near Ware Seguin and Lower Seguin Roads and along IH-10 from Pfeil to Graytown. Design work is ongoing.

Phase:

Future Design Easement Acquisition Construction Warranty Archived

Funding Source: Capital Recovery Fees and Bond Proceeds
Estimated Cost: \$2,200,000
Projected Start Date: Summer 2024
Projected End Date: Spring 2025
Actual Start Date:
Actual End Date:
Warranty End Date:

Engineering Consultant:
Utility Engineering Group, PLLC

Contractor:
TBD

Map labels: MIDDLE AND HIGH SCHOOL, RANDOLPH AIR FORCE BASE, RANDOLPH OAKS GOLF COURSE, BOYSVILLE SCHOOL, Interstate 10 E

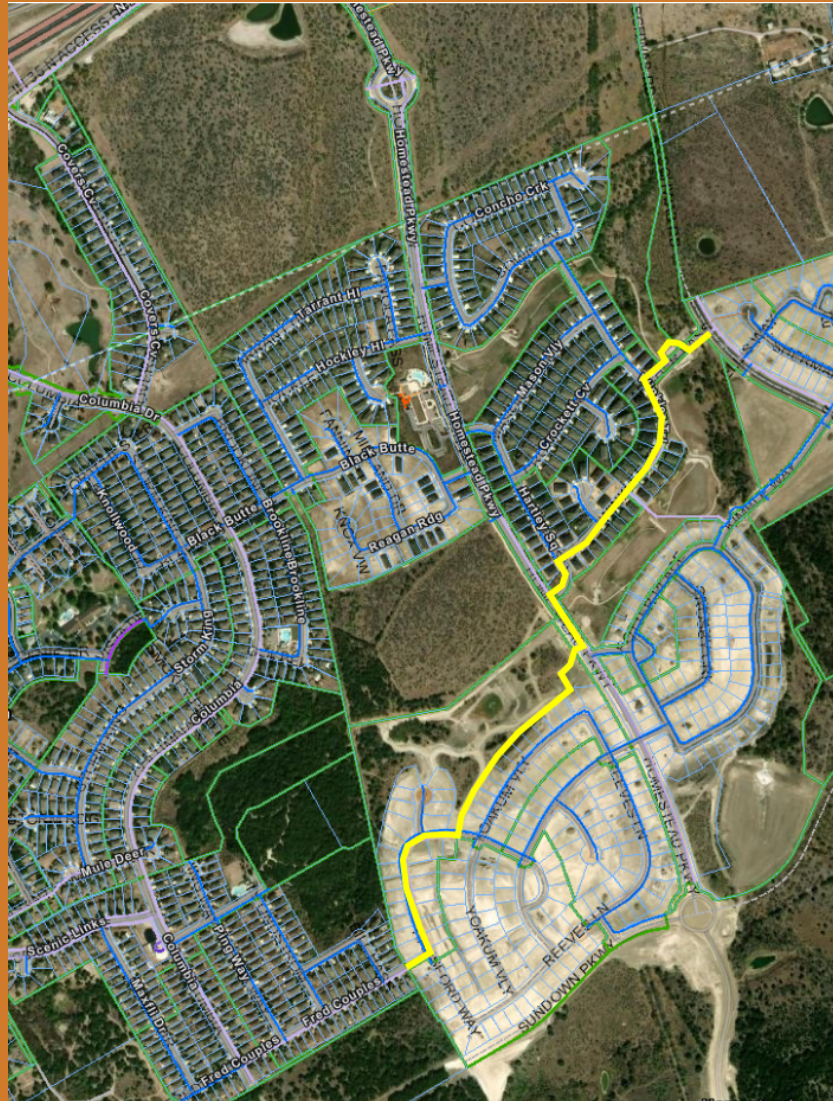
12-inch diameter water mains to provide looped system in southern Schertz

- Utility Engineering Group, PLLC

Expenses this period = \$80,810.00

- 60% Design complete
- Easement needs identified and acquisitions underway

WATER DISTRIBUTION MAIN – FRED COUPLES TO SCHWAB ROAD



12-inch diameter water main to provide secondary feed to far northeastern Schertz

- Reimbursement to Homestead Developer, ILF N-T, LP

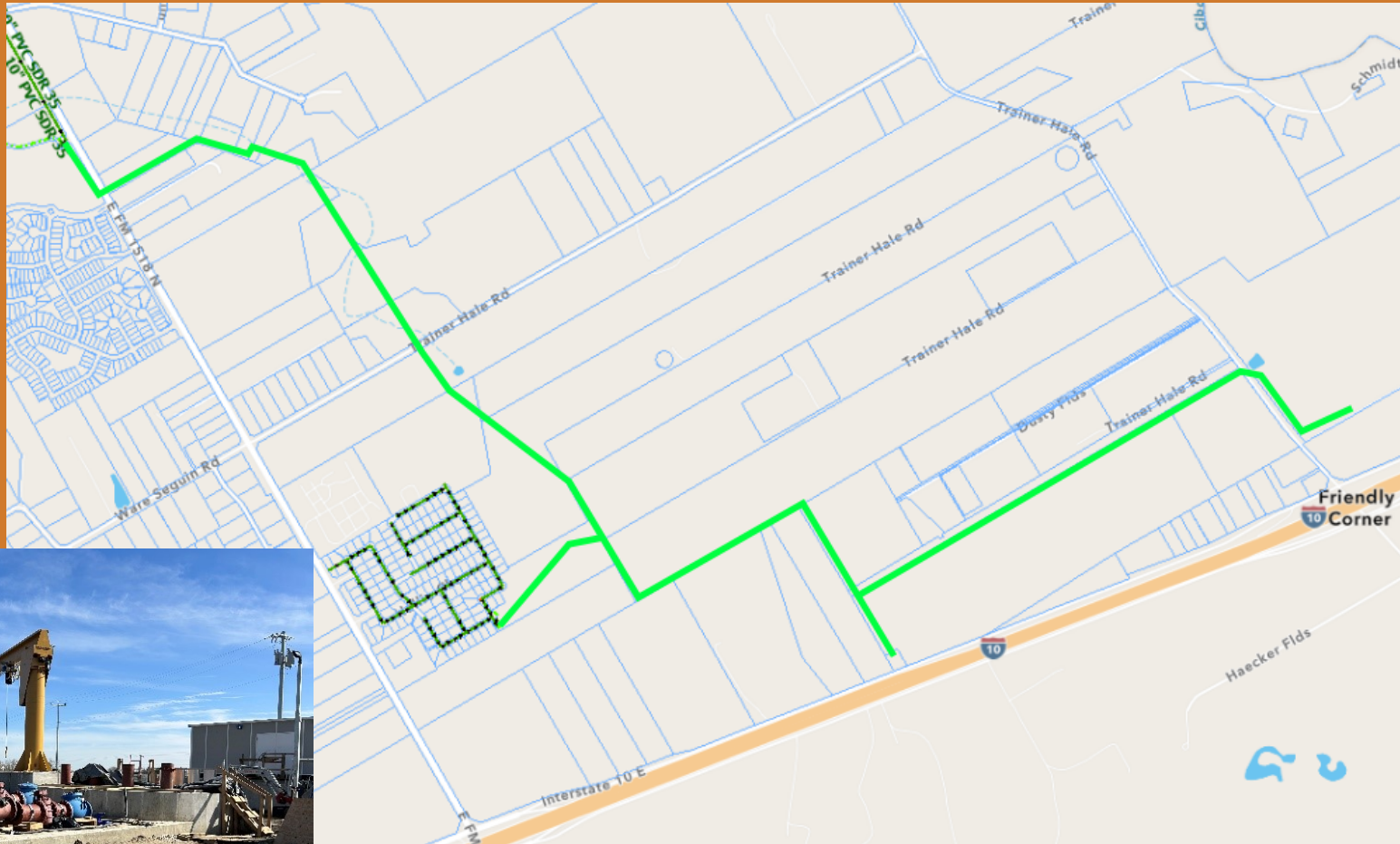
Expenses this period = \$455,555.79

- Construction Complete

SEWER FUND EXPENSES

- Woman Hollering Creek Wastewater Project
- City-wide Water Master Plan and Impact Fee Update

WOMAN HOLLERING CREEK WASTEWATER PROJECT



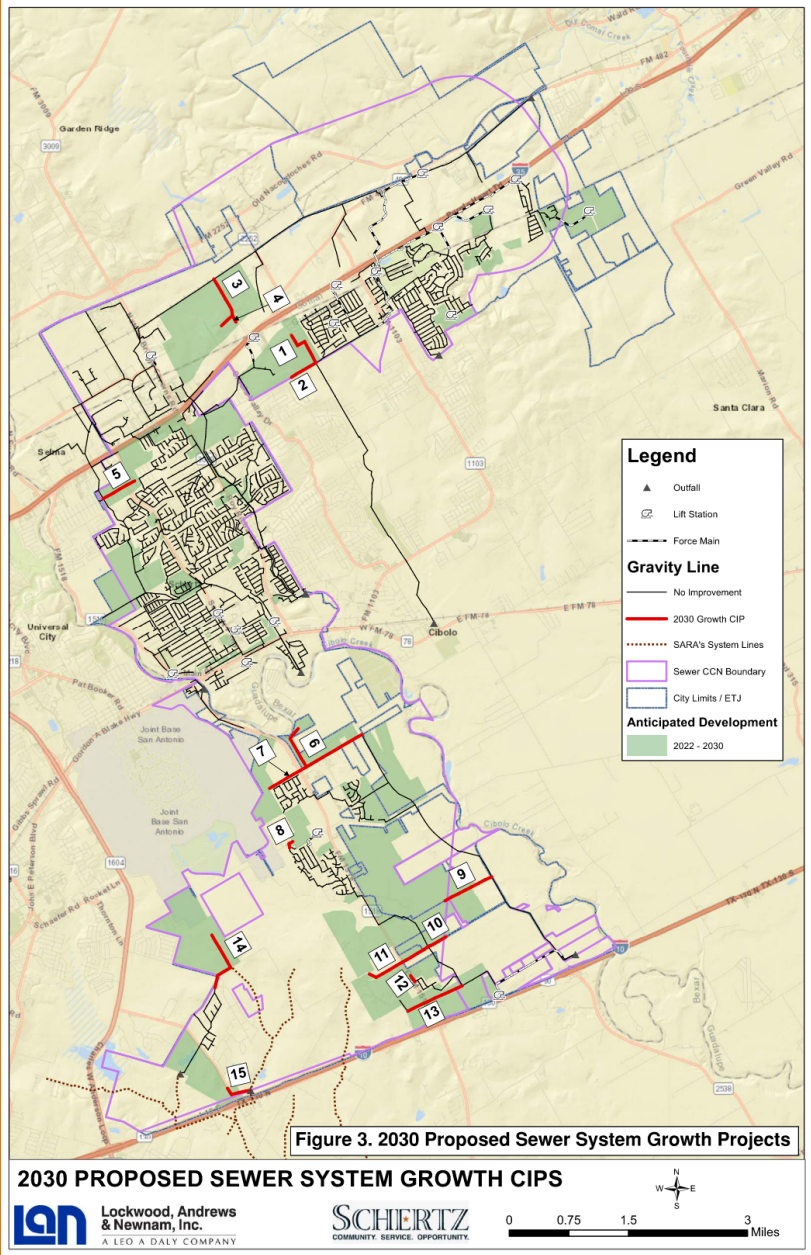
Wastewater Interceptor (30" and 18" gravity) and Lift Station and 14" Force Main

- Cobb, Fendley, & Associates, Inc.
- Thalle Construction Co., Inc.

Expenses this period =
\$1,547,254.42

- Underground piping nearly complete
- Electrical work at lift station progressing

CITY-WIDE MASTER PLAN AND IMPACT FEE UPDATE



- Lockwood, Andrews & Newnam, Inc.

Expenses this period =
\$16,515.50

- Capital Improvement Plan Draft Submitted and Reviewed

ROADWAY FUND EXPENSES

- Service Area 3 – 11776 Lower Seguin Road Property Purchase



Expense this period = \$152,020.75

Right of Way needed for future widening of Lower Seguin Road (90' secondary arterial)

COMMENTS AND QUESTIONS