

Key	Property ID	Address
1	1268192	12518 ROTHAU DR
2	1268191	12524 ROTHAU DR
3	1268178	12509 BARR WAY
4	1268177	12503 BARR WAY
5	1268176	12502 BARR WAY
6	1268175	12508 BARR WAY
7	1268174	12514 BARR WAY
8	1268173	12520 BARR WAY
9	309843	12311 LOWER SEGUIN R
10	1298380	E FM 1518 N
11	310108	8890 E FM 1518 N
12	1061511	8890 E FM 1518 N
13	310040	8880 E FM 1518 N
14	310034	8780 E FM 1518 N
15	310090	8710 E FM 1518 N
16	310107	E FM 1518 N
17	310193	8815 QUAILWOOD RUN
18	310194	8795 QUAILWOOD RUN
19	1259603	8651 LUCKSIDE
20	1259676	8752 STACKSTONE
21	1259675	8748 STACKSTONE
22	1259674	8744 STACKSTONE
23	1259673	8740 STACKSTONE
24	1259672	8736 STACKSTONE
25	1259671	8732 STACKSTONE
26	1259663	12309 LATTICE CV
27	1259662	12312 LATTICE CV
28	1259661	12308 LATTICE CV
29	1259660	12304 LATTICE CV
30	1259655	8508 HOLLERING VINE
31	1337410	8551 E FM 1518 N
32	1337411	11124 HOLLERING PASS
33	1337409	11121 HOLLERING PASS



Last update: April 9, 2024

City of Schertz, GIS Specialist: Bill Gardner, bgardner@schertz.com (210) 619-1185

*The City of Schertz provides this Geographic Information System product "as is" without any express or implied warranty of any kind including but not limited to the implied warranties of merchantability and fitness for a particular purpose. In no event shall The City of Schertz be liable for any special, indirect, or consequential damages or any damages whatsoever arising out of or in connection with the use of or performance of these materials. Information published in this product could include technical inaccuracies or typographical errors. Periodical changes may be added to the information herein. The City of Schertz may

City of Schertz

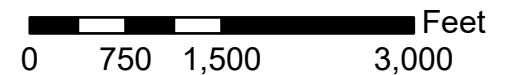
2024 Annexations

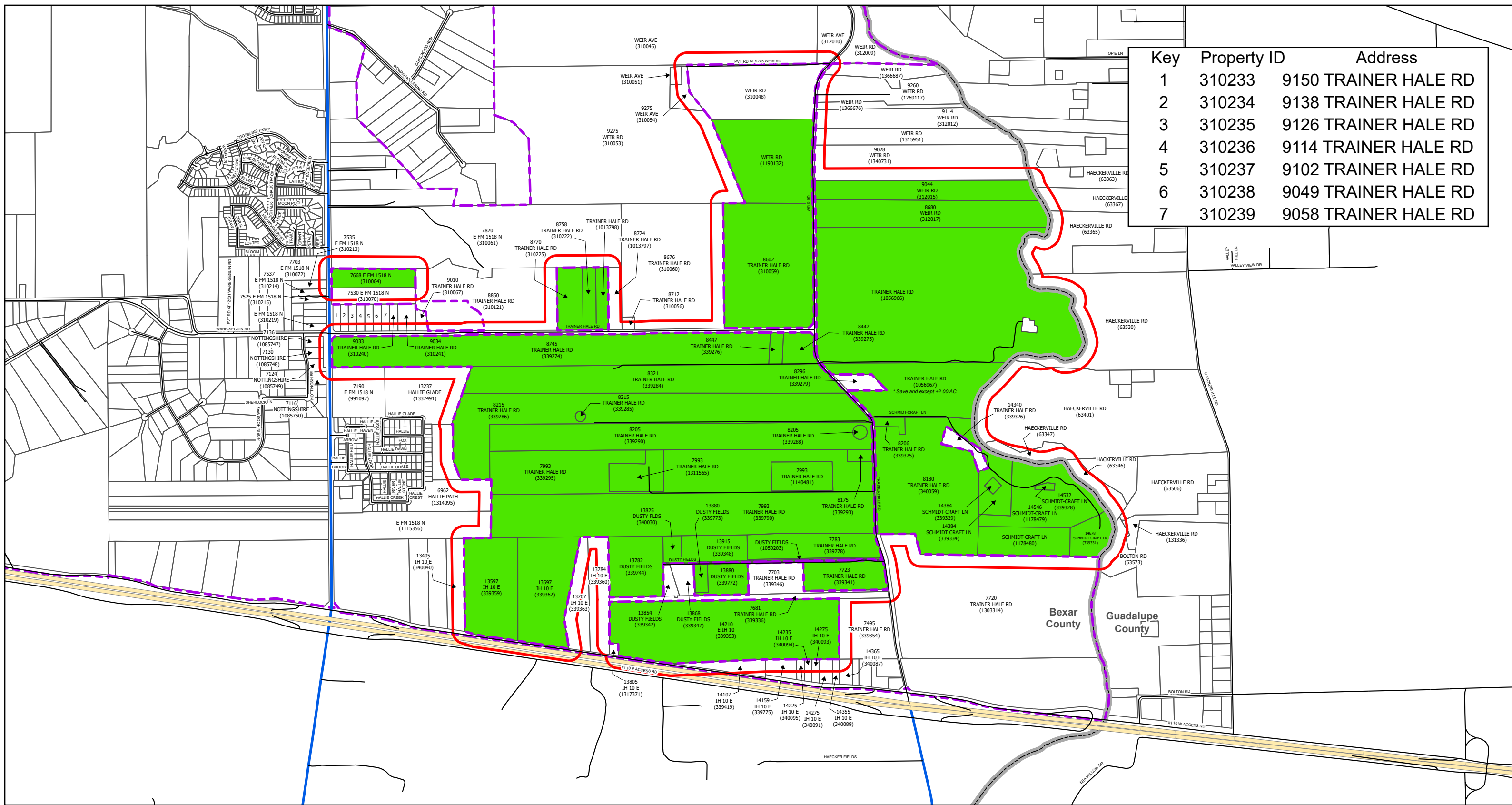
Bexar County

Northern Section

200' Buffer
 Municipal Boundary

Parcels
 Annexation Parcels





Key	Property ID	Address
1	310233	9150 TRAINER HALE RD
2	310234	9138 TRAINER HALE RD
3	310235	9126 TRAINER HALE RD
4	310236	9114 TRAINER HALE RD
5	310237	9102 TRAINER HALE RD
6	310238	9049 TRAINER HALE RD
7	310239	9058 TRAINER HALE RD



Last update: May 23, 2024

City of Schertz, GIS Specialist: Bill Gardner, bgardner@schertz.com (210) 619-1185

*The City of Schertz provides this Geographic Information System product "as is" without any express or implied warranty, including but not limited to the implied warranties of merchantability and fitness for a particular purpose. In no event shall The City of Schertz be liable for any special, indirect, or consequential damages or any damages arising out of or in connection with the use of or performance of these materials. Information published in this product could include technical inaccuracies or typographical errors. Periodical changes may be added to the information herein. The City of Schertz may make improvements and changes

City of Schertz

2024 Annexations

Bexar County Southern Section

- 200' Buffer
- Municipal Boundary

- Parcels
- Annexation Parcels

