

SCHERTZ STREET PRESERVATION AND MAINTENANCE

July 16, City Council Workshop

Larry Busch | Public Works Director

John Nowak, P.E. | Assistant City Engineer

SCHERTZ
COMMUNITY. SERVICE. OPPORTUNITY.

PAVEMENT DISTRESSES



PAVEMENT DISTRESSES

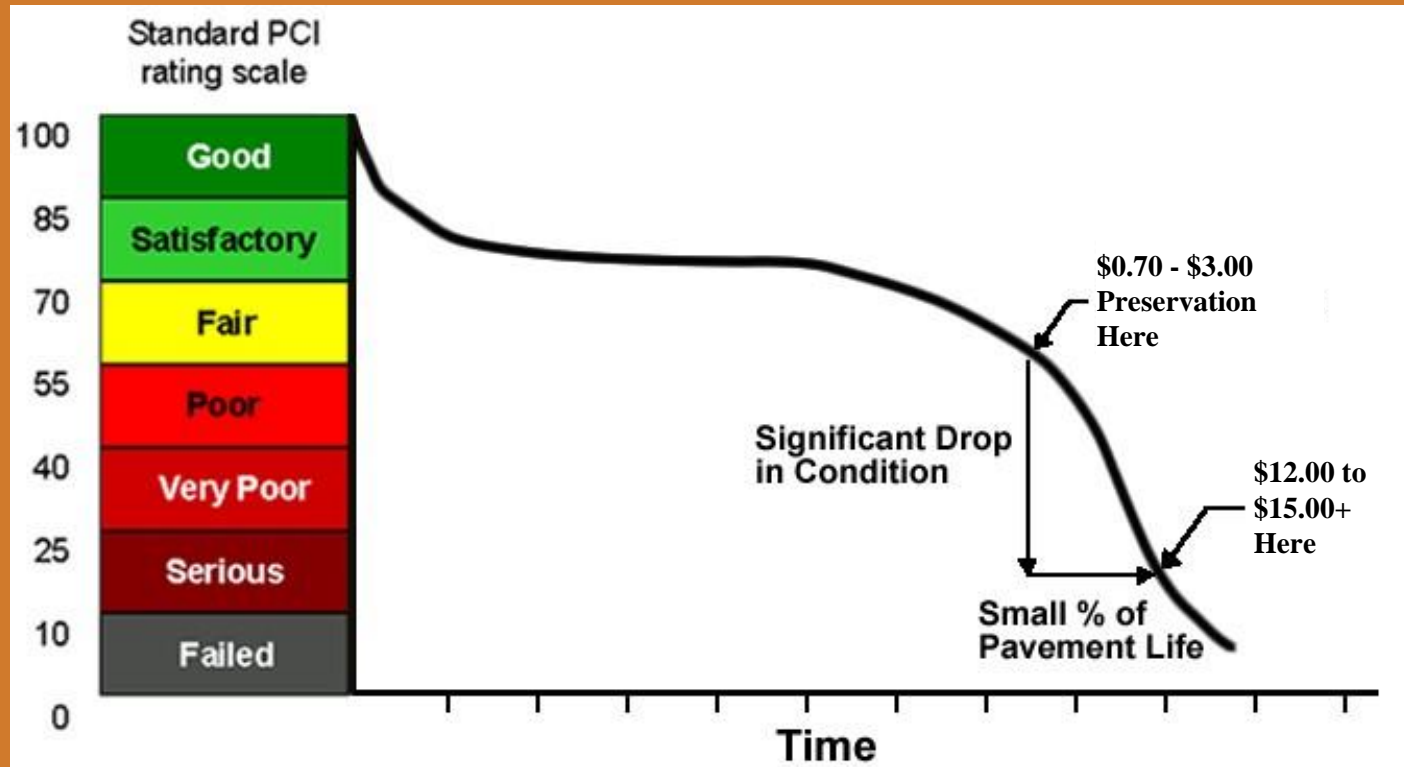
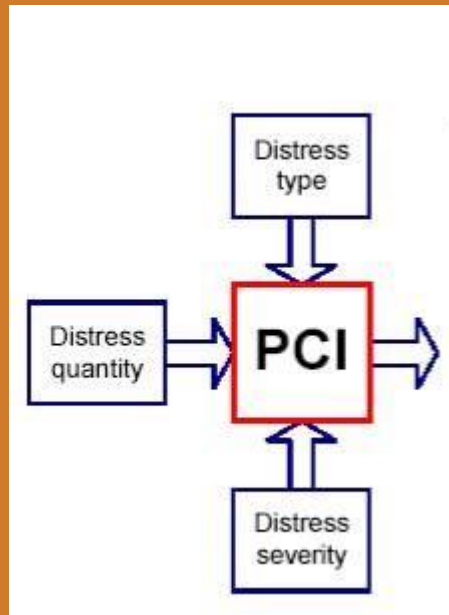


PAVEMENT DISTRESSES

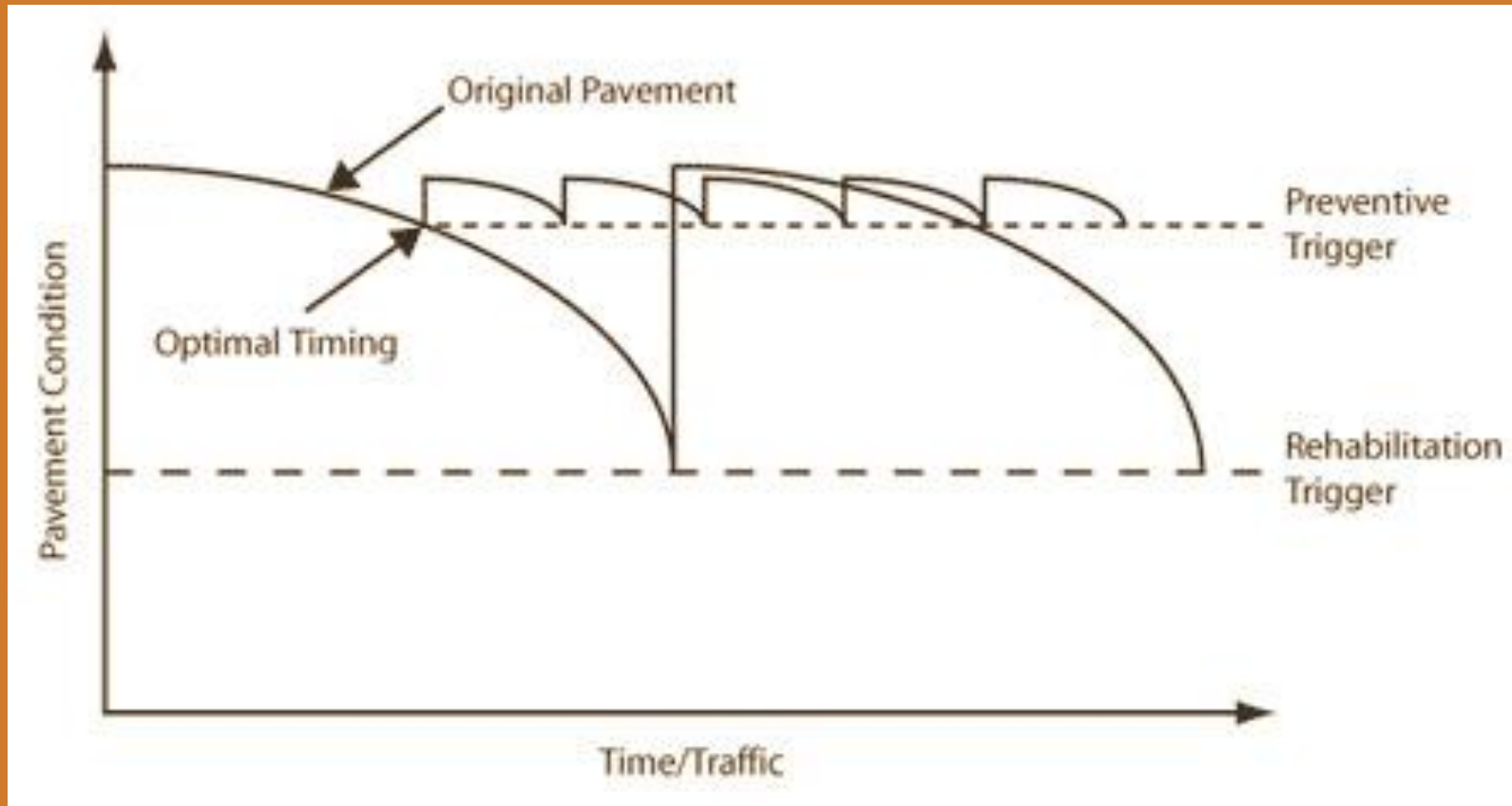


PAVEMENT DISTRESSES





PAVEMENT PRESERVATION



Goal is to do preservation treatment earlier and at regular intervals rather than let streets fully deteriorate and require reconstruction

STREET SURFACE TREATMENTS



Slurry Seal/
Micropaving



Mill and Overlay

STREET SURFACE TREATMENTS



Chip Seal



Rehabilitation

SELECTION OF PRESERVATION TREATMENT

Surface Seal (Slurry Seal or Chip Seal)

- Lower volume roadways (local streets)
- Roadways with fewer turning movements

Mill and Overlay/Micropaving

- Used where surface seal will not last the expected service life
- Higher volume roadways (arterials and some collectors)
- Roadways with many turning movements

Other Strategies

- Rehabilitation, reconstruction, or other as dictated by the amount of base repairs needed and/or geotechnical investigation

HOW DO WE SELECT PROJECTS?

PCI Score

- Objective measure
- Look for “cluster” of streets for economies of scale and to complete a neighborhood in a single project

Coordination With Other Project Efforts

- Utility replacements, drainage improvements, etc.

Citizen and Staff Knowledge and Observations

Budget Constraints

2024 PROJECTS*

Resurfacing

- Schertz Parkway, Woodland Oaks to IH-35
- Aranda Lane
- Inglewood Drive
- Columbia Drive, Covers Cove to Country Club Blvd
- Schertz Forest Subdivision; Kensington Ranch Subdivision; Savannah Bluff Subdivision; Mobile Villa Estates Subdivision; Fairhaven Subdivision; and The Ridge at Scenic Hills Subdivision

Rehabilitation

- Maple Drive; some streets in Silvertree Subdivision; Segments in Schertz Forest; and St Andrews Drive

Buffalo Valley South Utility Replacement and Rehabilitation

Lookout Road Reconstruction

*Subject to change based on available budget
(projects shown on CIP Dashboard)

Streets Maintenance Dashboard

Public Works Street Maintenance
City of Schertz

This Dashboard is meant to review street maintenance projects throughout the City of Schertz. To utilize this app, adjust the filters to refine the results.

Select a Sign Condition

- All
- Fair
- Good
- NEW
- Poor

Select a Street Issue Type

- All
- Other
- Pothole
- Sidewalk Issue
- Street Issue

Select Completion Date or Range
1/1/2024 and after

From:

Until:

<< < January 2024 > >>

S	M	T	W	T	F	S
31	1	2	3	4	5	6
7	8	9	10	11	12	13
14	15	16	17	18	19	20
21	22	23	24	25	26	27
28	29	30	31	1	2	3

GIS Disclaimer: This product is for informational purposes only and may not have been prepared for or be suitable for legal, engineering, or surveying purposes. It does not represent an on-the-ground survey and represents only the approximate relative location of property boundaries.

Potholes

324

Completed

Last update: 9 seconds ago

Sidewalk Issues

27

Completed

Last update: 9 seconds ago

Street Issues

30

Completed

Last update: 9 seconds ago

Other Issues

14

Completed

Last update: 9 seconds ago

Streets Maintenance Examples: Pothole Patches



Pothole Patch:

Semi-permanent repair to areas equal to or less than one square yard. Done with cold-patch asphalt material.

Pothole Repair:

Permanent repair to areas equal to or less than one square yard. Done by square cutting area, cleaning and application of hot-patch asphalt.

Streets Maintenance Examples: Concrete & Other Repairs



Concrete curb and sidewalk repairs.



Rail painting and tree removal.



Streets Maintenance Examples: Street Issues



Before

2525 Pillory Pointe



After

Streets Maintenance Examples: Street Issues



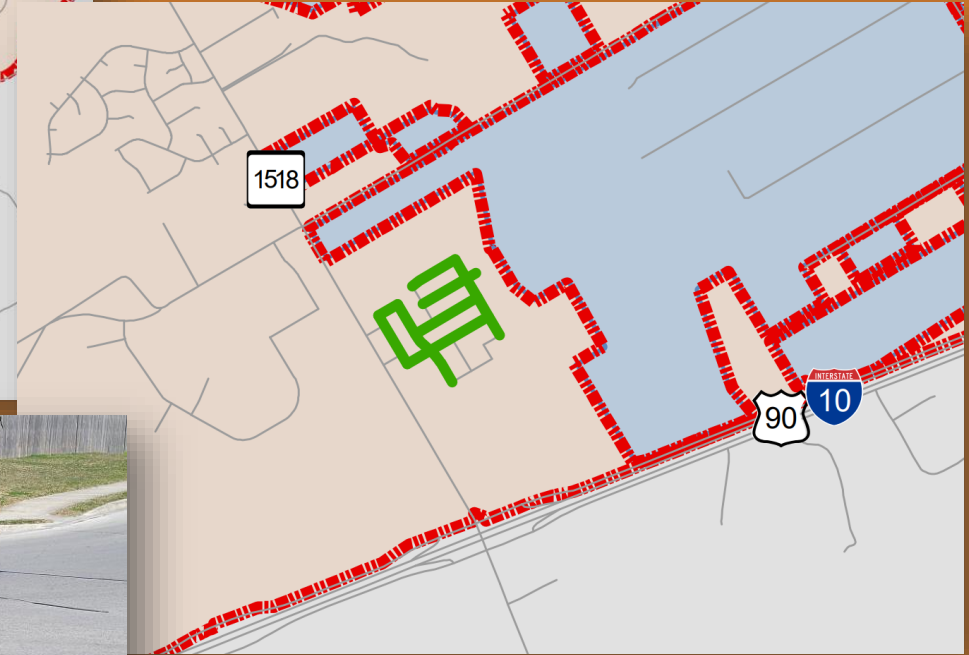
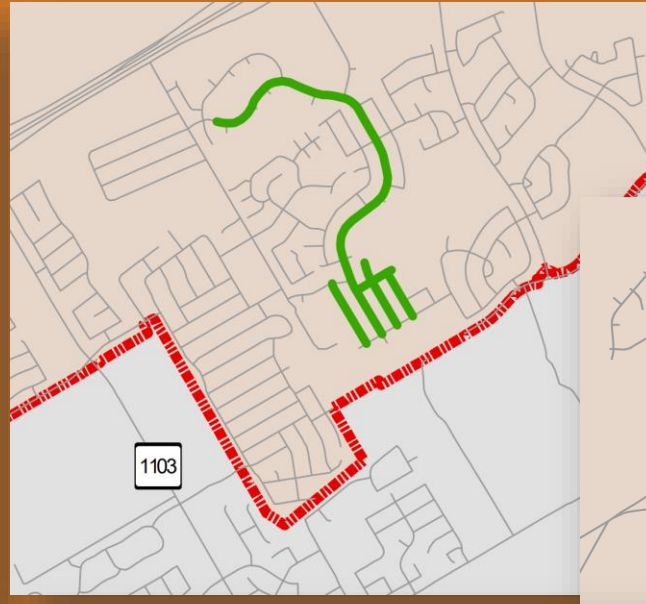
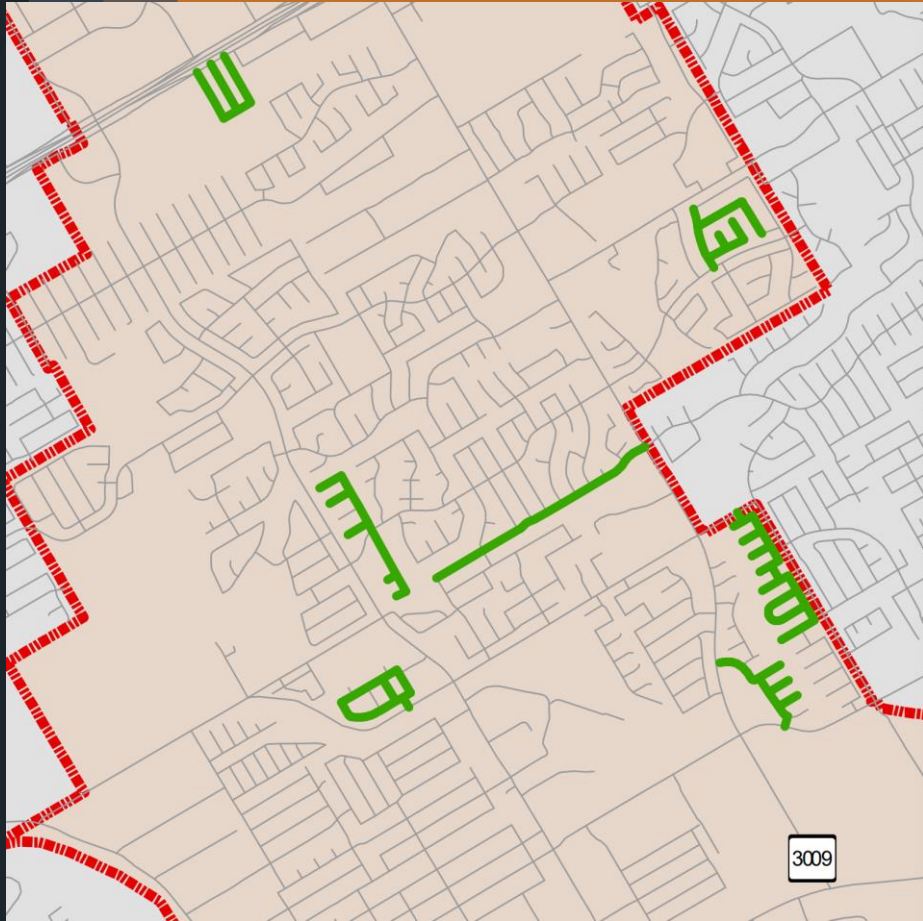
Before



After

5129 Columbia Dr.

Streets Maintenance: Crack Seal Program 2024



Total Complete: 8.40 Miles

Streets Maintenance Progress Summary 2024

Major Street Repairs:

564 Foxford Run Dr
627 Cotton Patch
1632 Rolling Brook Ln
2525 Pillory Pointe
3941 Wensledale
4013 Brook Hollow Dr
5129 Columbia Dr
410 Aviation Ave
6721 Guada Coma Dr
5365 Hartley Square
5373 Hartley Square

Street Issues Repairs (1/1/24 – 6/28/24): 30
Asphalt Hot Mix Tons – 286 tons

Pothole Repairs (1/1/24 – 6/28/24): 324
UPM (Pothole Patch Material) – 54 tons

Crack Seal Program Miles Completed: 8.40
Crack Sealant Material – 648 Boxes, 9 Pallets

COMMENTS AND QUESTIONS