

Island  
±600 ft<sup>2</sup>

Electronic Sign  
±12 x 3 ft

Underground Utilities

**30' GVEC  
Utility Line  
Clearance**

8" WL

8" WL

12" WL

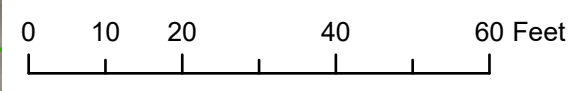
12" WL

8" WL

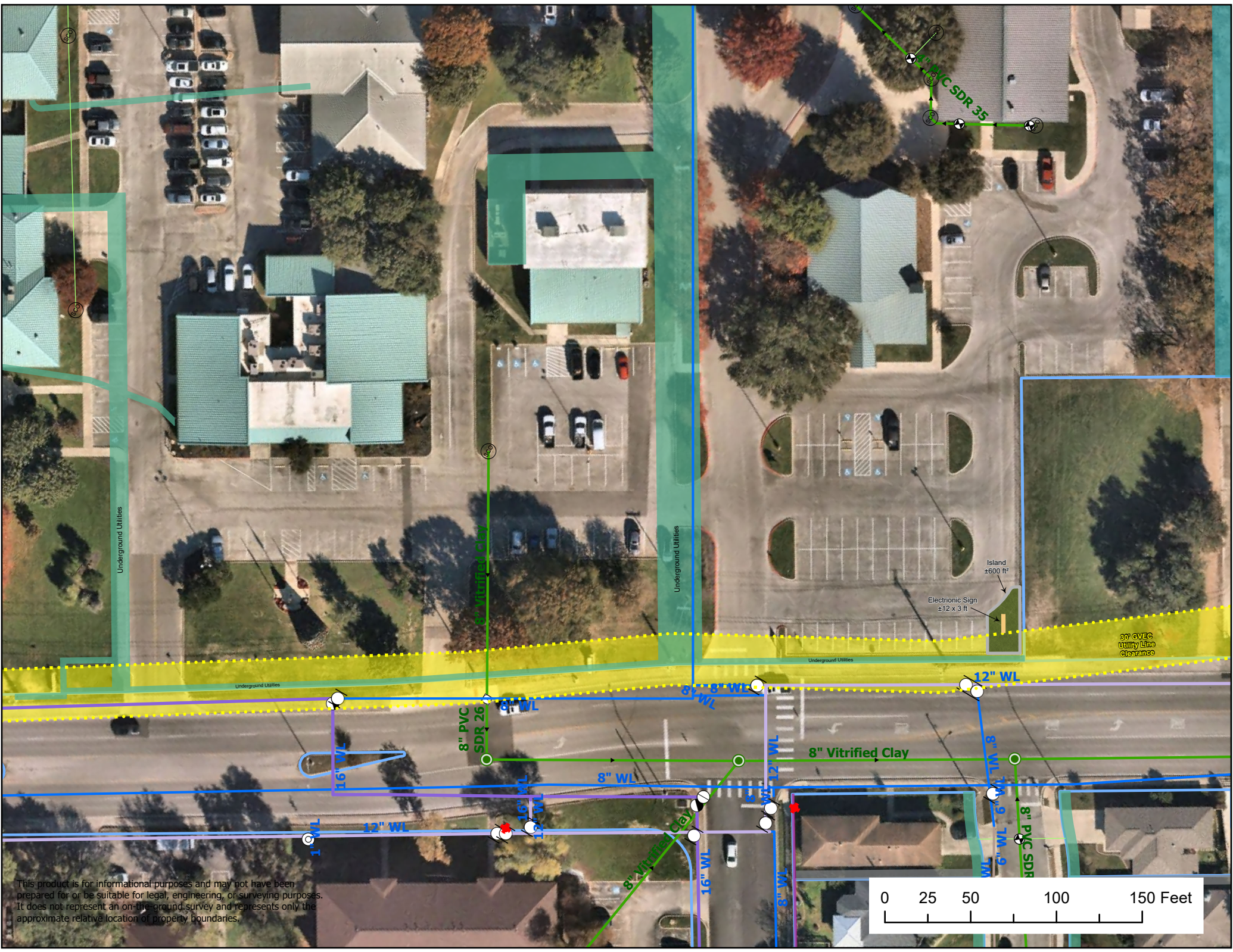
SCHERTZ PKWY

8" Vitrified Clay

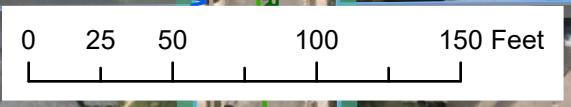
8" PVC  
SDR 35



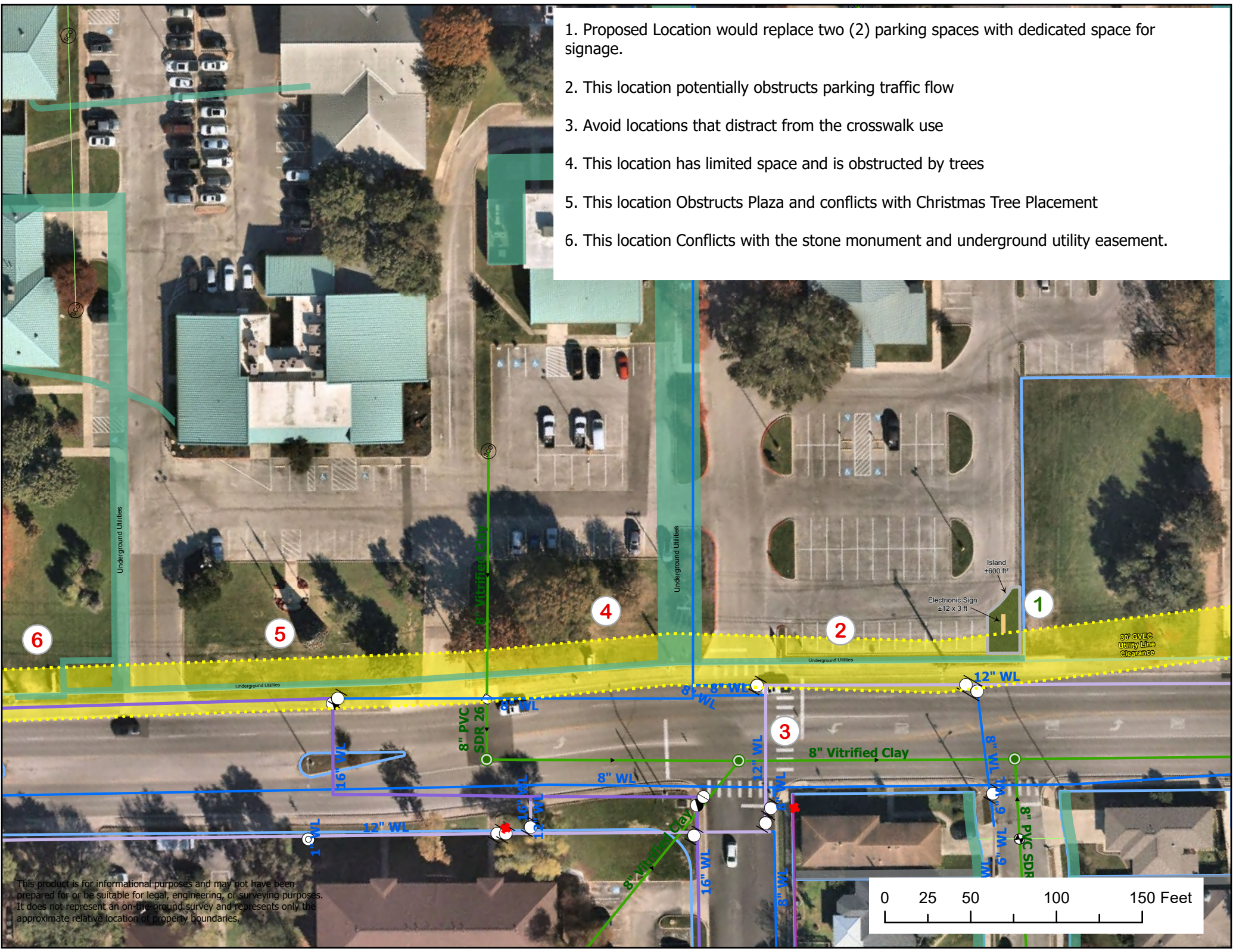
This product is for informational purposes and may not have been prepared for or be suitable for legal, engineering, or surveying purposes. It does not represent an on-the-ground survey and represents only the approximate relative location of property boundaries.



This product is for informational purposes and may not have been prepared for or be suitable for legal, engineering, or surveying purposes. It does not represent an on-the-ground survey and represents only the approximate relative location of property boundaries.



1. Proposed Location would replace two (2) parking spaces with dedicated space for signage.
2. This location potentially obstructs parking traffic flow
3. Avoid locations that distract from the crosswalk use
4. This location has limited space and is obstructed by trees
5. This location Obstructs Plaza and conflicts with Christmas Tree Placement
6. This location Conflicts with the stone monument and underground utility easement.



This product is for informational purposes and may not have been prepared for or be suitable for legal, engineering, or surveying purposes. It does not represent an on-the-ground survey and represents only the approximate relative location of property boundaries.

