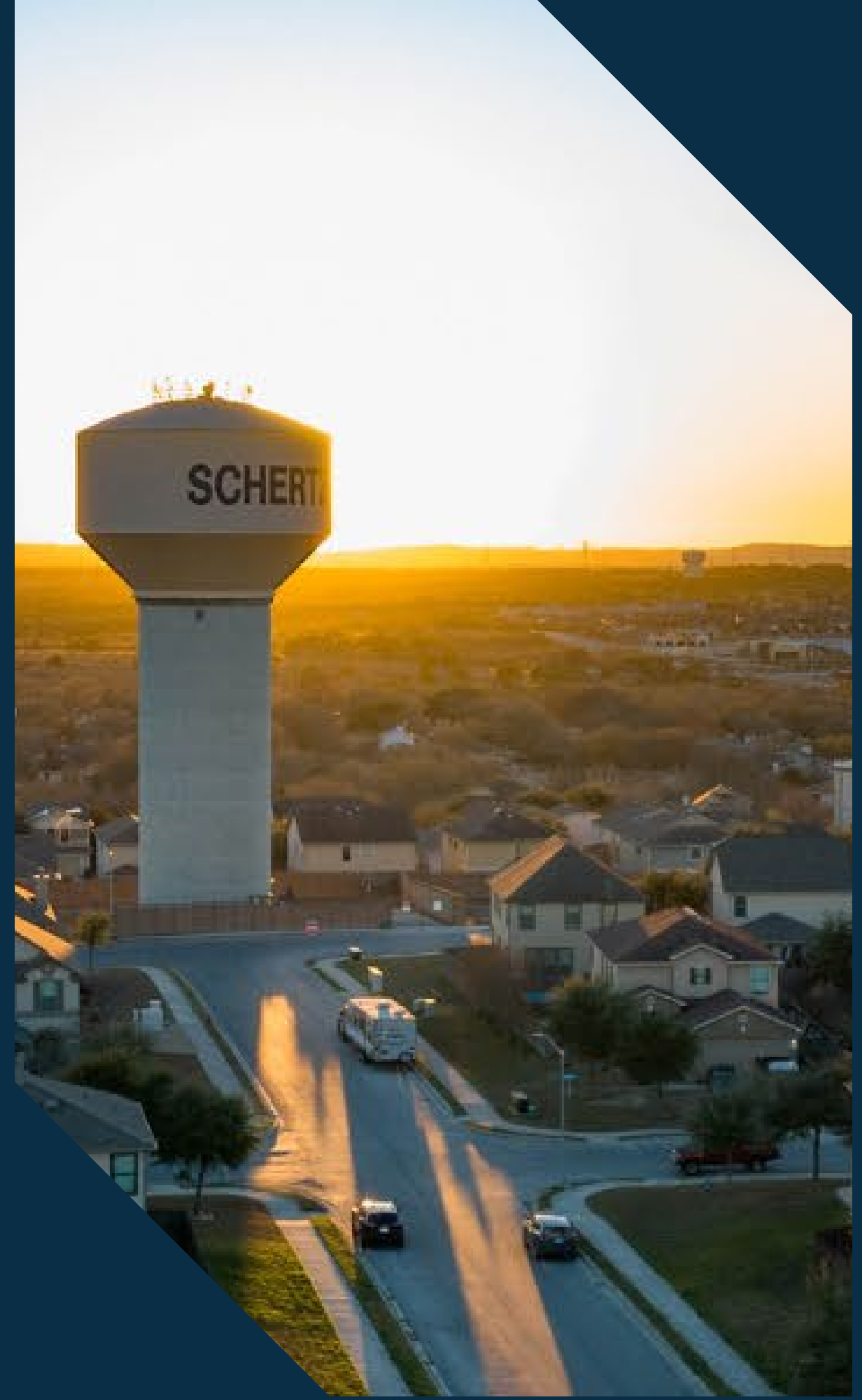


*City of Schertz*

# Parks, Recreation and Open Space Master Plan

*November 12, 2024*

City Council Meeting



# Meeting Agenda

**Process Review**

---

**Engagement & Feedback**

---

**Document Contents**

---

**Q&A**

---

*City of Schertz PROST Plan*

# Process Review

---



# What is a PROST Plan?

## Parks, Recreation, Open Space, and Trails

### WHAT?

- 10-year plan, followed by 5-year updates (per TPWD guidelines)
- Establishes a community vision
- Helps guide City decisions
- Creates an Action Plan

### WHO?

- Freese and Nichols w/ City Planning & Parks Dep facilitate the process
- Schertz community identifies issues and vision
- Parks Board acts as sounding board
- City staff work with the community to implement the plan

### WHY?

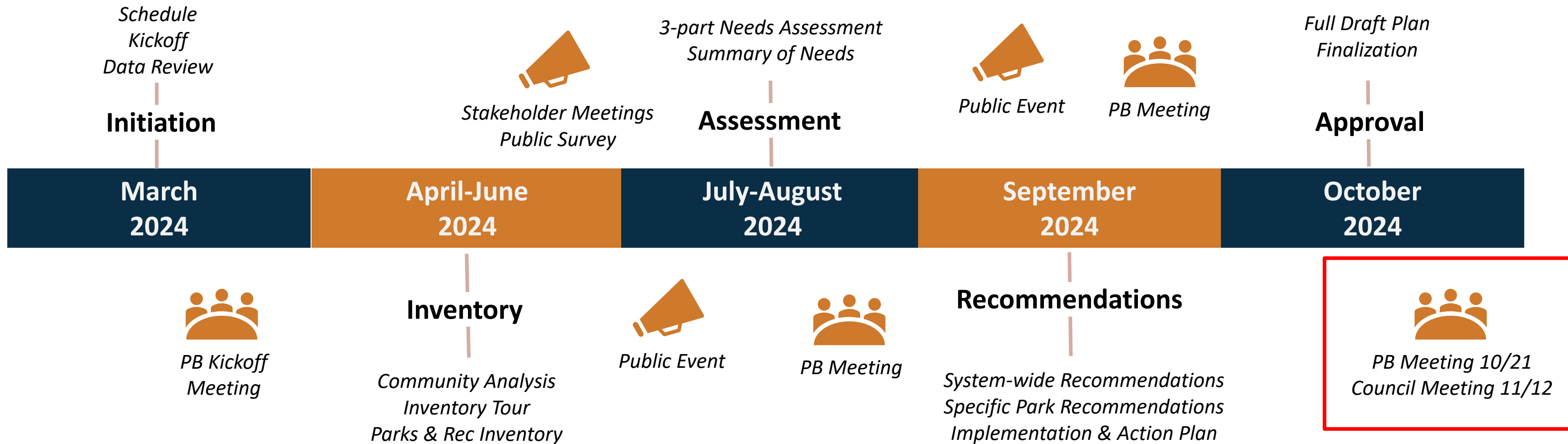
- Builds consensus
- Identifies current and future priorities
- Plans for future population growth
- Provides Parks Dept a road map for planning & budgeting
- TPWD Compliance and Funding

# About the Plan

- Implications of **demographic trends and projected population growth** as they relate to parks and recreation.
- **Analyzes current state** of the City's parks and recreation system and **identifies deficiencies and needs**
- Establishes **goals and recommendations** for the next 10 years
- **Prioritizes improvements** to the parks and recreation system
- Aids the City in **seeking funding** opportunities
- This document should be **used as a planning tool** by **City staff, elected and appointed officials, citizens, and the private development community** to understand community desires and move toward long-term community success.
- The Plan is intended to help **coordinate local efforts** for Schertz and to work in conjunction with local counties (Guadalupe, Bexar, Comal), area school districts, local organizations and sports leagues.

# Project Timeline

March/April 2024  
COMP PLAN ADOPTION



**WE ARE  
HERE!**

*City of Schertz PROST Plan*

# Engagement & Feedback

---



# Community Engagement

## Engagement Events

- **Comprehensive Plan Feedback**
- **4 Parks Board Meetings**
- **5 Stakeholder Meetings**
- **Public Online Survey**
- **Website and Online Mapping Tool**
- **Tabling at 4<sup>th</sup> of July Jubilee**
- **Public Open House**



# Stakeholder Focus Groups

- **BVYA**
- **SYSA**
- **Schertz Area Senior Center**
- **Friends of Crescent Bend Nature Park**
- **Master Naturalists, Master Gardeners and Trail Advocates**

## Priorities:

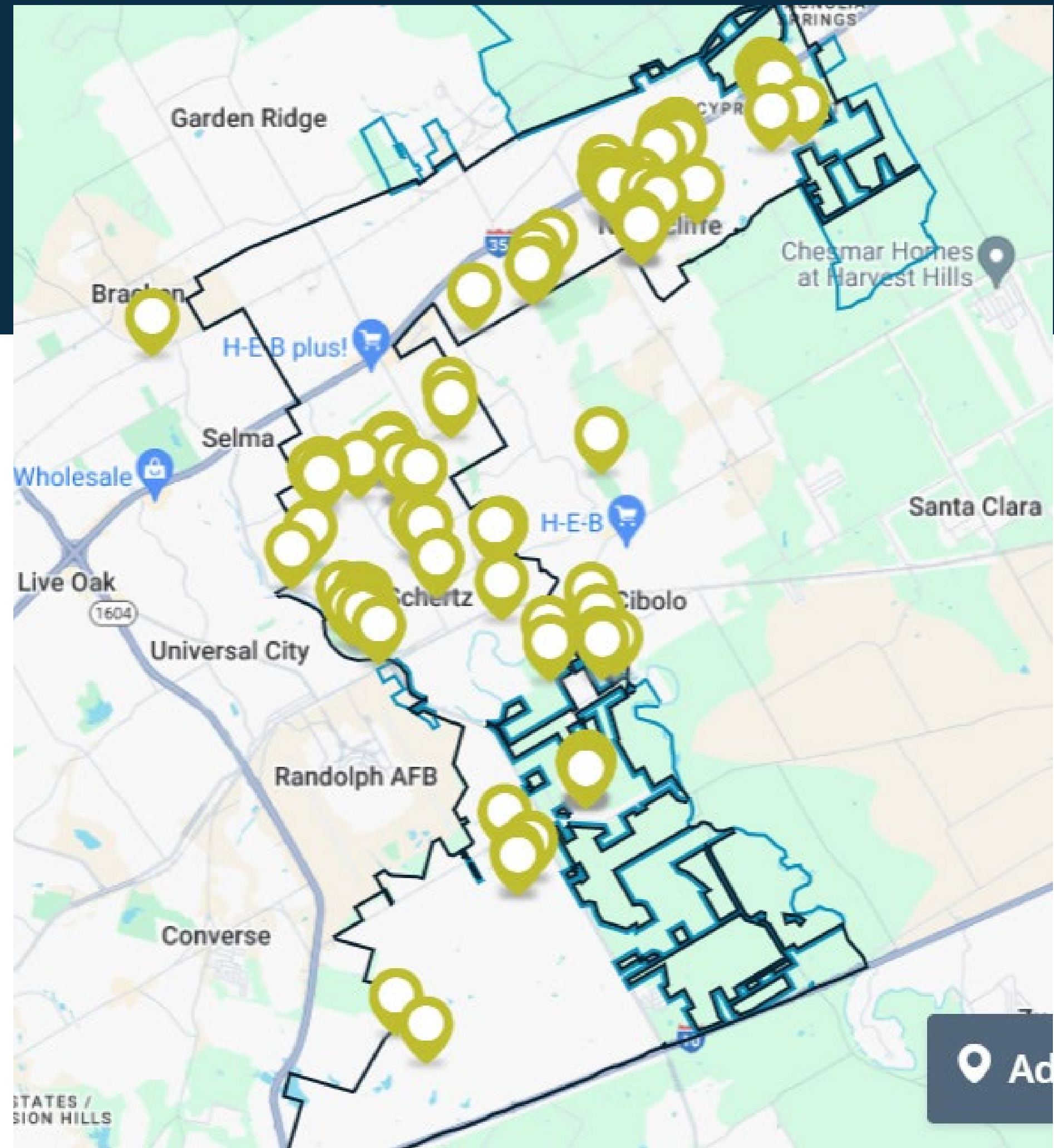
- Balancing needs across a variety of users.
- Enhancing park amenities in ways that are contextually appropriate for each park.
- Preservation of nature and wildlife habitat.
- Connectivity via trails between parks and regionally; more loop trails with trailheads.

## Concerns:

- Overcrowding of park spaces.
- Lack of public understanding of natural maintenance practices.
- Maintenance of older facilities,
- Demand for sports leagues outweighs most of the facility capacities.
- Extreme weather events (heat, drought, rain, freeze) and their impacts on park infrastructure and usability.
- Increasing maintenance costs.
- Water quality along natural waterways and the continued impact of local development.

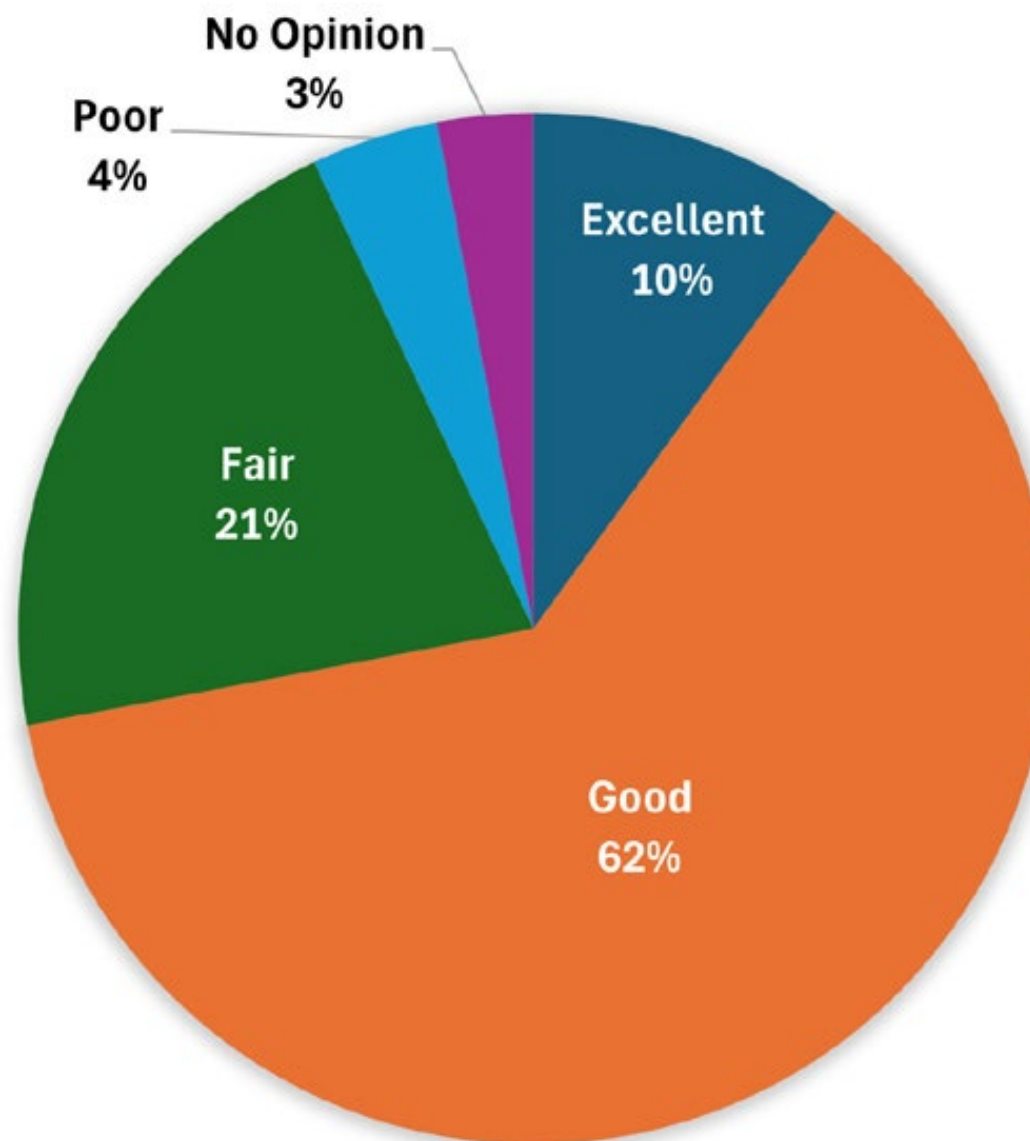
# Online Mapping Tool

103 participants, 162 comments

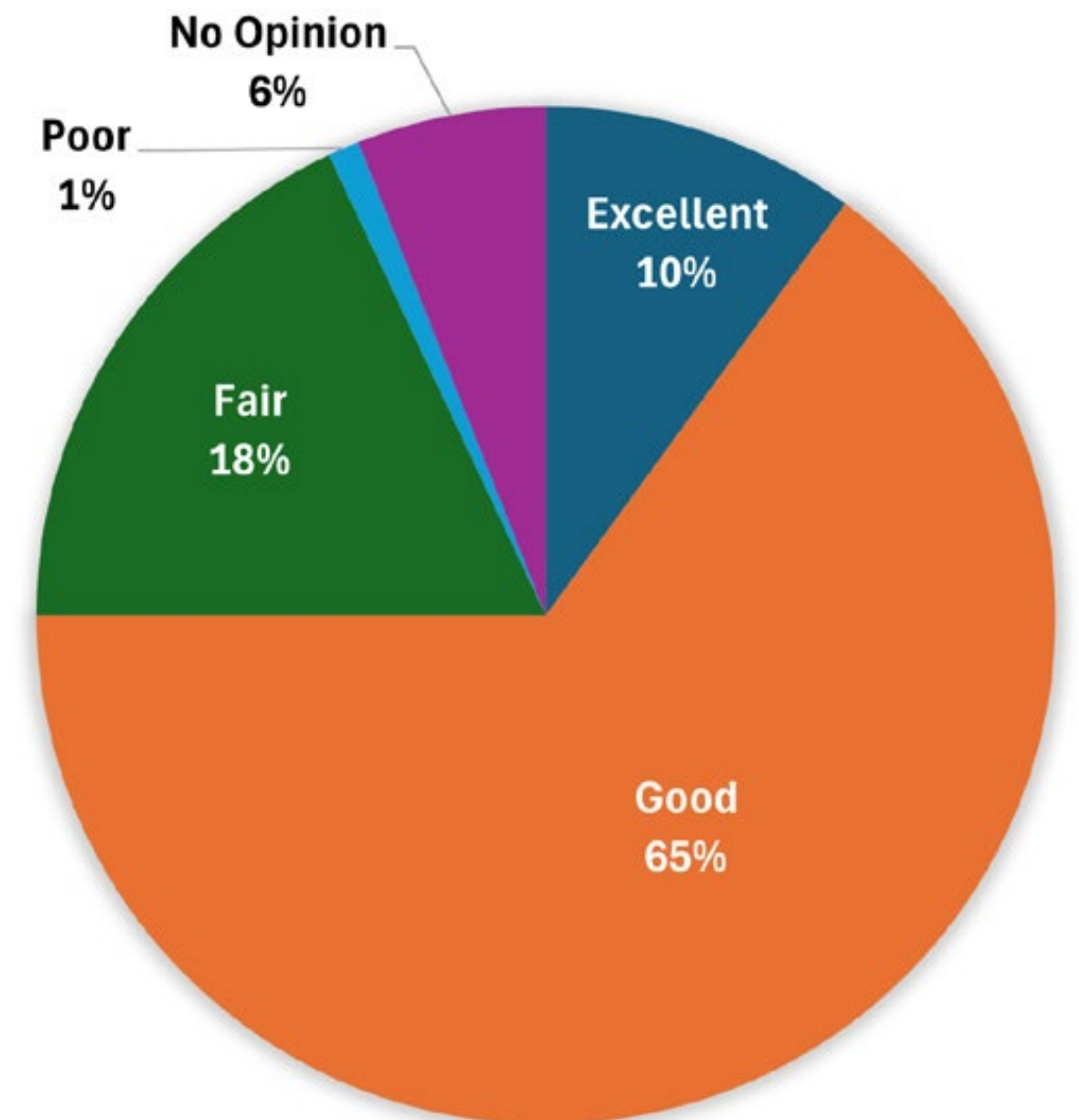


# Online Survey

- Open June 24-August 11, 2024
- 4000 Postcards Mailed
- 426 responses (132 or 31% were from postcards)
- 3% of households, 95% confidence

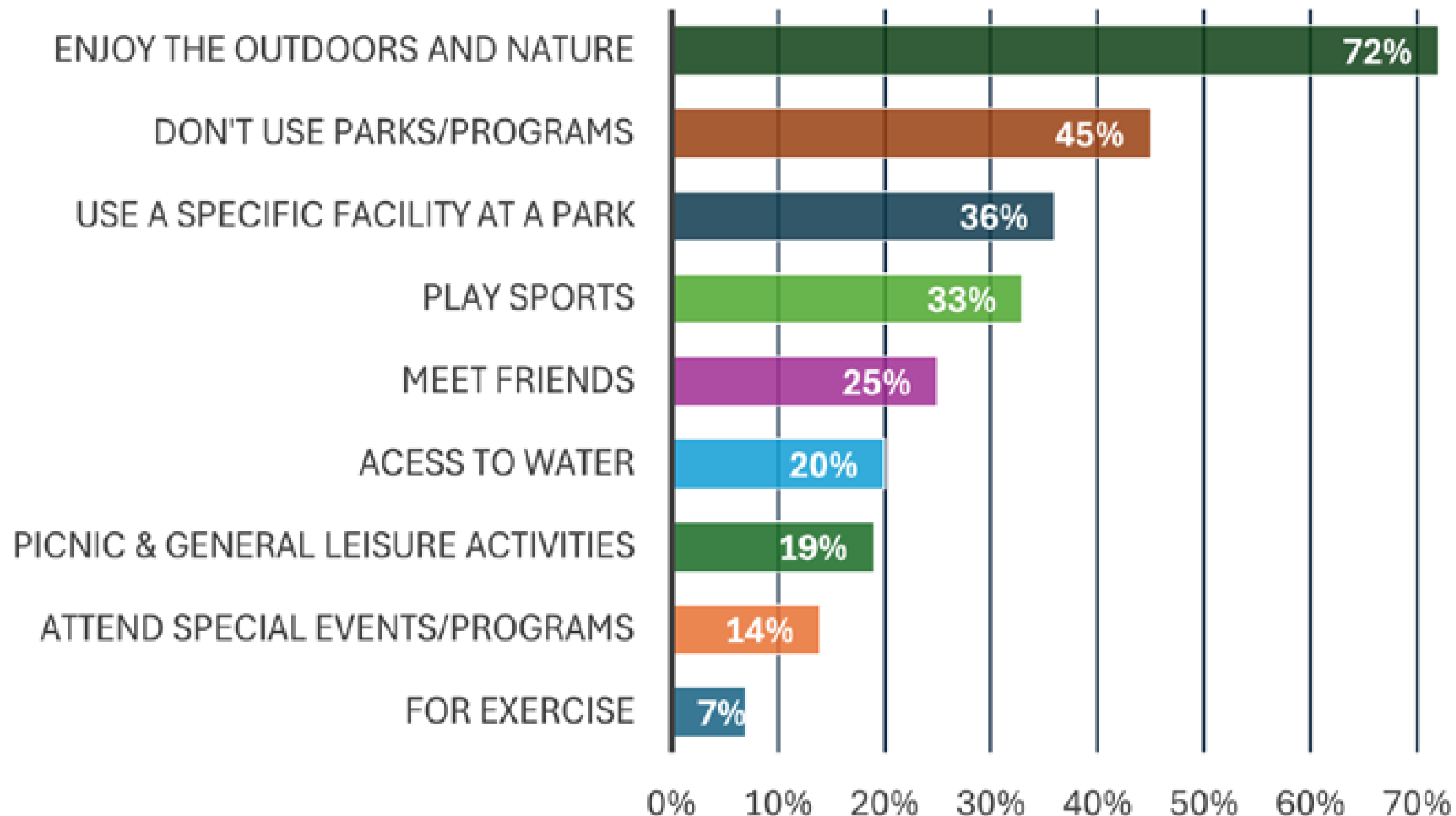


72% Rated the quality of parks excellent or good



75% Rated the physical condition of parks excellent or good

# Online Survey

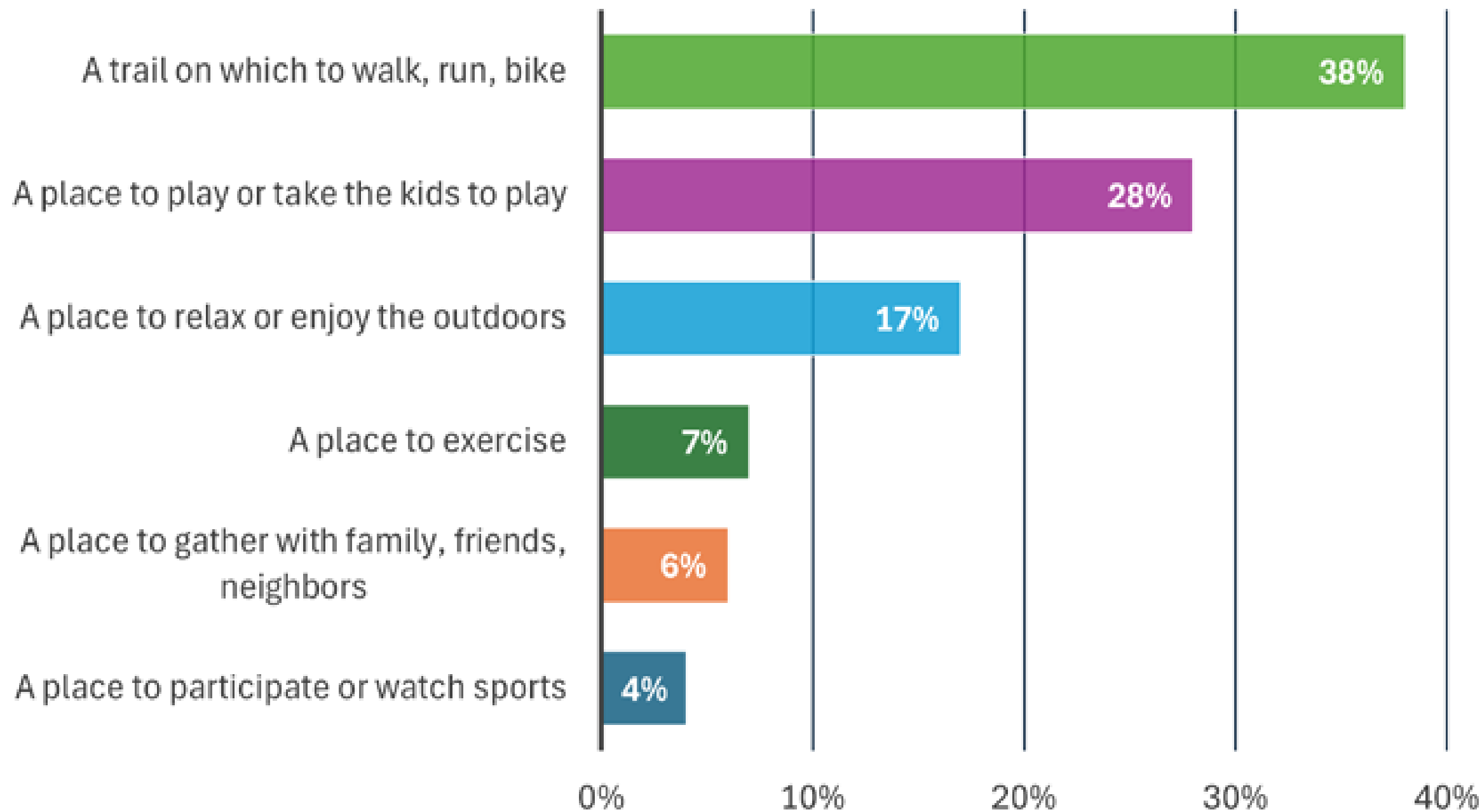


## Main Reasons for Parks & Recreation Program Usage

The main reasons respondents do not use parks/programs are:

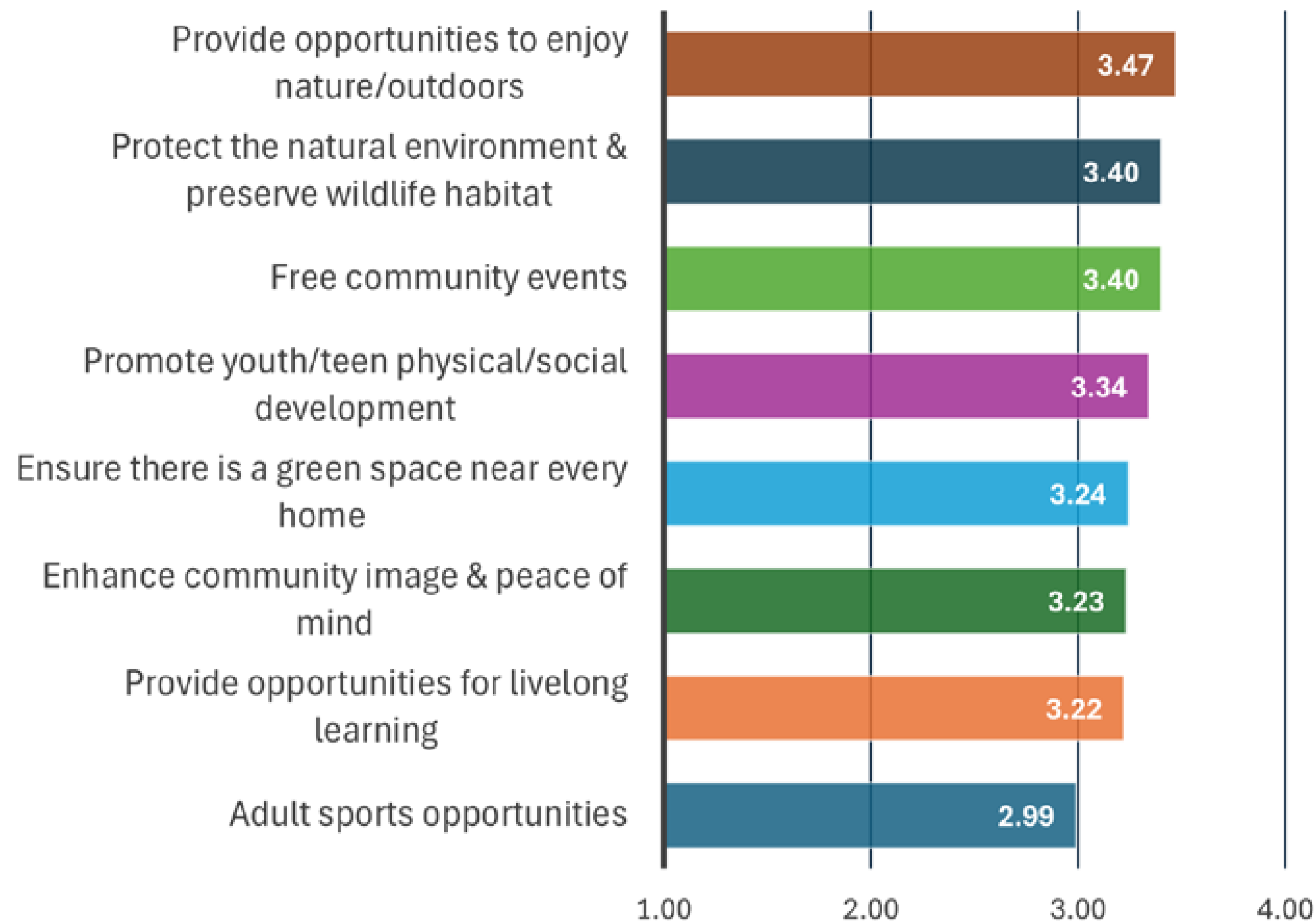
- It's too far (36%)
- Not interested in visiting (16%)
- Physically unable to participate (12%)

# Online Survey



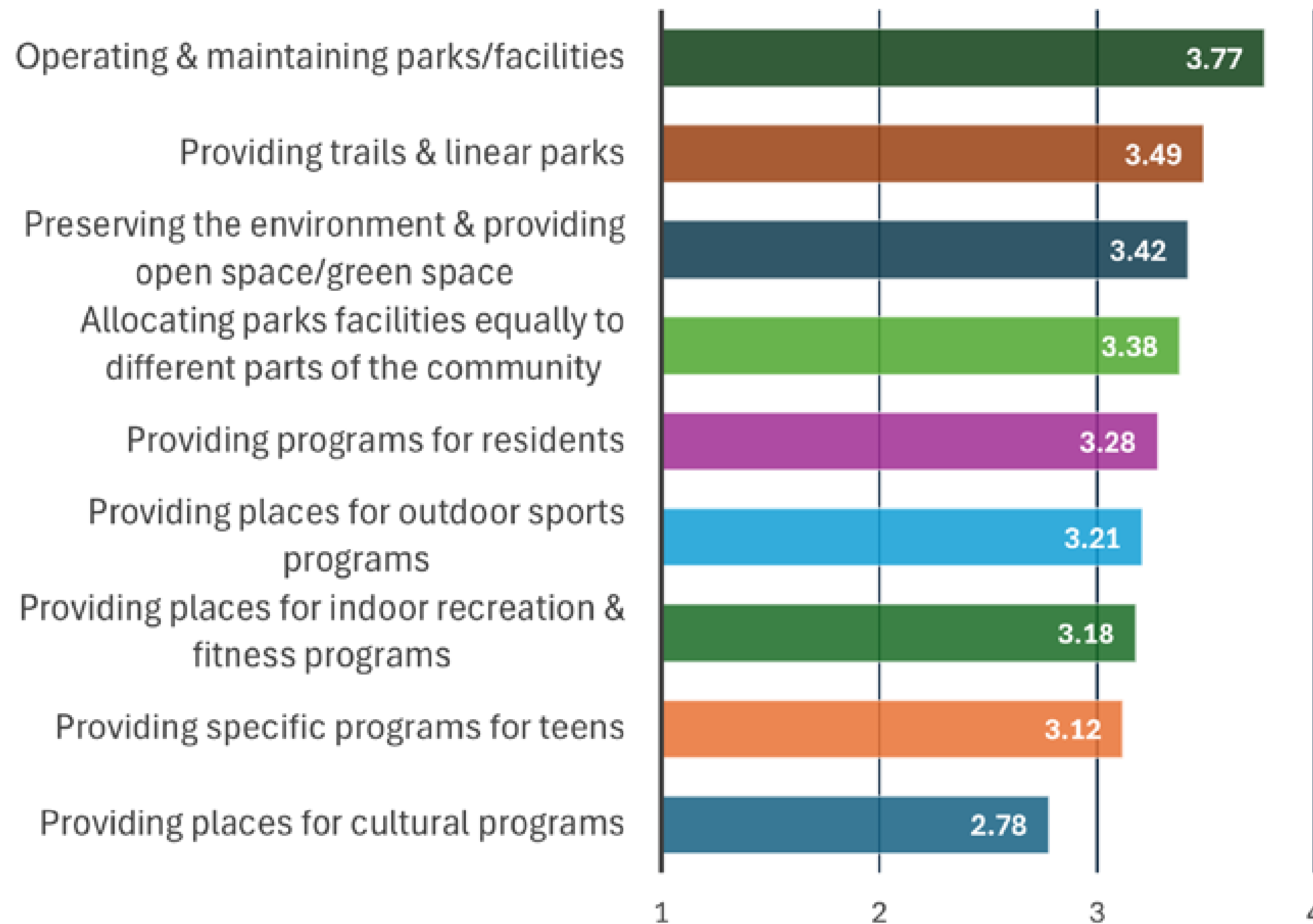
**Most Important  
Opportunity to  
Have Close to Home**

# Online Survey



## Most Important Purposes/Benefits of Parks & Recreation in Schertz

# Online Survey



## Most Important Parks & Recreation Functions Performed by the City of Schertz

# Online Survey

The top 10 facility priorities respondents are interested in include:

- Addition of shade to playgrounds
- Trails & trail connections throughout the City
- Nature areas/open space
- Playgrounds
- Benches/seating areas in parks/trails
- Swimming pool
- Adaptive playground equipment (for special needs)
- Covered picnic pavilions
- Splash pad/water spray ground
- Indoor recreation space (gym, fitness, etc.)



*City of Schertz PROST Plan*

# Document Contents

---



# Park Classifications



Gutierrez Garden Park



Wendy Swan Memorial Park



Pickrell Park



Crescent Bend Nature Park



Great Northern Trail



Dry Comal Creek Nature Park



Schertz Skate Park

## Pocket Parks

- **Typ. Size:** 0.25-1.0 ac
- **Service Area:** ¼ mile radius
- **Common Features:** Playground, picnic amenities

## Neighborhood Parks

- **Typ. Size:** 1-10 ac
- **Service Area:** ¼ - ½ mile radius
- **Common Features:** Playground, sports court, trail, pavilion, multi-use lawn

## Community Parks

- **Typ. Size:** 10-100 ac
- **Service Area:** 1 - 3 mile radius
- **Common Features:** Athletic fields, pool, trails, signature open spaces, amphitheater

## Regional Parks

- **Typ. Size:** Varies
- **Service Area:** Up to 50-mile radius (varies)
- **Common Features:** nature areas, trails, athletic complex, event spaces

## Greenbelts and Linear Parks

- **Typ. Size:** Varies
- **Service Area:** Varies
- **Common Features:** Trails

## Open Space/ Nature Park

- **Typ. Size:** Varies
- **Service Area:** Varies
- **Common Features:** Trails, observation points, picnic areas

## Special Use Parks

- **Typ. Size:** Varies
- **Service Area:** Varies
- **Common Features:** Pool, skate park, dog park, tennis complex, golf course

# Inventory Tables

- Classification and inventory of:
  - Existing City parks
  - Undeveloped parkland
  - Recreation facilities
  - HOA Parks
  - ISD Facilities
  - Recreational Programming, Events, Sports Leagues

| Map Label                    | Park Name                                      | Address                 | Acreage | Classification | Baseball/Softball Field (#) | Standalone Backstop (#) | Soccer Field (#) | Football Field (#) | Multipurpose Practice Field (#) | Basketball Court (#) | Pickleball Court (#) | Multipurpose Court (basketball, pickleball) (#) | Tennis Court (#) | Concession Stand (Y/N) | Skate Park (#) | Disc Golf Course (#) |
|------------------------------|--|-------------------------|---------|----------------|-----------------------------|-------------------------|------------------|--------------------|---------------------------------|----------------------|----------------------|---|------------------|------------------------|----------------|----------------------|
| City-Owned Parks (Developed) |  |                         |         |                |                             |                         |                  |                    |                                 |                      |                      |   |                  |                        |                |                      |
| 1                            | Gutierrez Garden Park                          | 1231 Borgfeld Rd        | 2.1     | P              |                             |                         |                  |                    |                                 |                      |                      |   |                  |                        |                |                      |
| 2                            | Lone Oak Park                                  | 100 Round Tree Dr       | 0.3     | P              |                             |                         |                  |                    |                                 |                      |                      |   |                  |                        |                |                      |
| 3                            | Mary Whitfield Burks Park                      | 3175 Schertz Parkway    | 2.0     | P              |                             |                         |                  |                    |                                 |                      |                      |   |                  |                        |                |                      |
| 4                            | Ashley Park                                    | 534 Ashley Park         | 4.8     | N              |                             |                         |                  |                    | 1                               |                      |                      | 1   |                  |                        |                |                      |
| 5                            | Cypress Point Park                             | 5526 Cypress Point      | 10.5    | N              |                             |                         |                  |                    |                                 |                      |                      |   |                  |                        |                |                      |
| 6                            | Forest Ridge Park                              | 17529 Wiederstein Road  | 11.1    | N              |                             |                         |                  |                    |                                 |                      |                      |   |                  |                        |                |                      |
| 7                            | Unnamed Future Park (Hallie's Cove)*           | Hallie Glade            | 39.7    | N              |                             |                         |                  |                    |                                 |                      |                      |   |                  |                        |                |                      |
| 8                            | Heritage Oaks Park                             | 11700 Long Leaf Pkwy    | 13.1    | N              |                             |                         |                  |                    |                                 |                      |                      | 1   |                  |                        |                |                      |
| 9                            | Unnamed Future Park (Homestead) <sup>(3)</sup> | Homestead Parkway       | 14.9    | N              |                             |                         |                  |                    |                                 |                      |                      |   |                  |                        |                |                      |
| 10                           | Rhine Valley Park                              | 9958 Mulhouse Dr        | 5.0     | N              |                             |                         |                  |                    | 2                               |                      |                      | 1   |                  |                        |                |                      |
| 11                           | Wendy Swan Memorial Park                       | 4601 Cherry Tree        | 2.7     | N              |                             |                         |                  |                    |                                 |                      |                      | 1   |                  |                        |                |                      |
| 12                           | The Park at Woodland Oaks                      | 905 Woodland Oaks Drive | 1.8     | N              |                             |                         |                  |                    |                                 |                      |                      | 1   |                  |                        |                |                      |
| 13                           | Community Circle Park <sup>(2)*</sup>          | Community Circle Drive  | 8.3     | C              |                             | 5                       |                  |                    | 5                               |                      |                      |   |                  |                        |                |                      |

# Profiles

1. Cibolo Creek String of Parks
2. Community Circle Park
3. Crescent Bend Nature Park
4. Cypress Point Park
5. Dry Comal Creek Nature Park
6. Heritage Oaks Park
7. Hilltop/Homestead Park
8. Live Oak Hills + Forest Ridge Park
9. North Center
10. Pickrell + Thulemeyer Park
11. Unnamed Graytown Valley Park
12. Unnamed Hallie's Cove Park
13. Unnamed Parklands Park

## Crescent Bend Nature Park

### Location and Access

Crescent Bend Nature Park (CBNP) is located along the Cibolo Creek and West Schaefer Road. The park attracts visitors from the surrounding region and is accessible by personal automobiles. Eventually the park is expected to be connected to the Cibolo Creek Trail network.

### Existing Conditions

CBNP is one of the few parks with a regional draw in the City and offers unique amenities such as birding and campsites (to be used for Scouting groups only) along with walking and biking trails, picnic tables, and educational signage. The park is also a Certified Firefly Habitat and is committed to the protection of fireflies from invasive species, light pollution and habitat degradation. In addition, the park sustains multiple habitats and diverse wildlife. It also hosts events such as educational walks and Star Party.

The Friends of Crescent Bend Nature Park is a volunteer group that works with the City to spearhead conservation efforts and ensure the provision of necessary amenities in the park. The group has been involved in developing strategies and recommendations for the future development of the park.

### Opportunities for Improvement

- Undertake initiatives to preserve the biodiversity of the park and restore habitat, such as invasive removal and soil health enhancing maintenance strategies.
- Provide fishing access along the northeast corner of the park. Identify locations for fishing piers.
- Develop a concept plan for constructing an education pavilion in the park.
- Improve pedestrian and bicycle access to the park through a connected trail systems and introduce additional educational programming for kids and young adults.
- Provide additional parking for visitors.
- Provide additional restrooms.
- Provide natural, exploratory children's play areas
- Provide outdoor classroom nodes along the trail network



Map 7. Crescent Bend Nature Park Location

### About the Park

| Park Location       | Park Size   | Park Type  |
|---------------------|-------------|------------|
| 12805 Schaefer Road | 180.7 Acres | Open Space |

| Park Features             |              |
|---------------------------|--------------|
| Walking and Biking Trails | Parking      |
| Picnic Tables             | Benches      |
| Restrooms                 | Camp Site    |
| Natural Areas, Habitat    | Paved Trails |
| Birding Stations          |              |
| Water Access              |              |

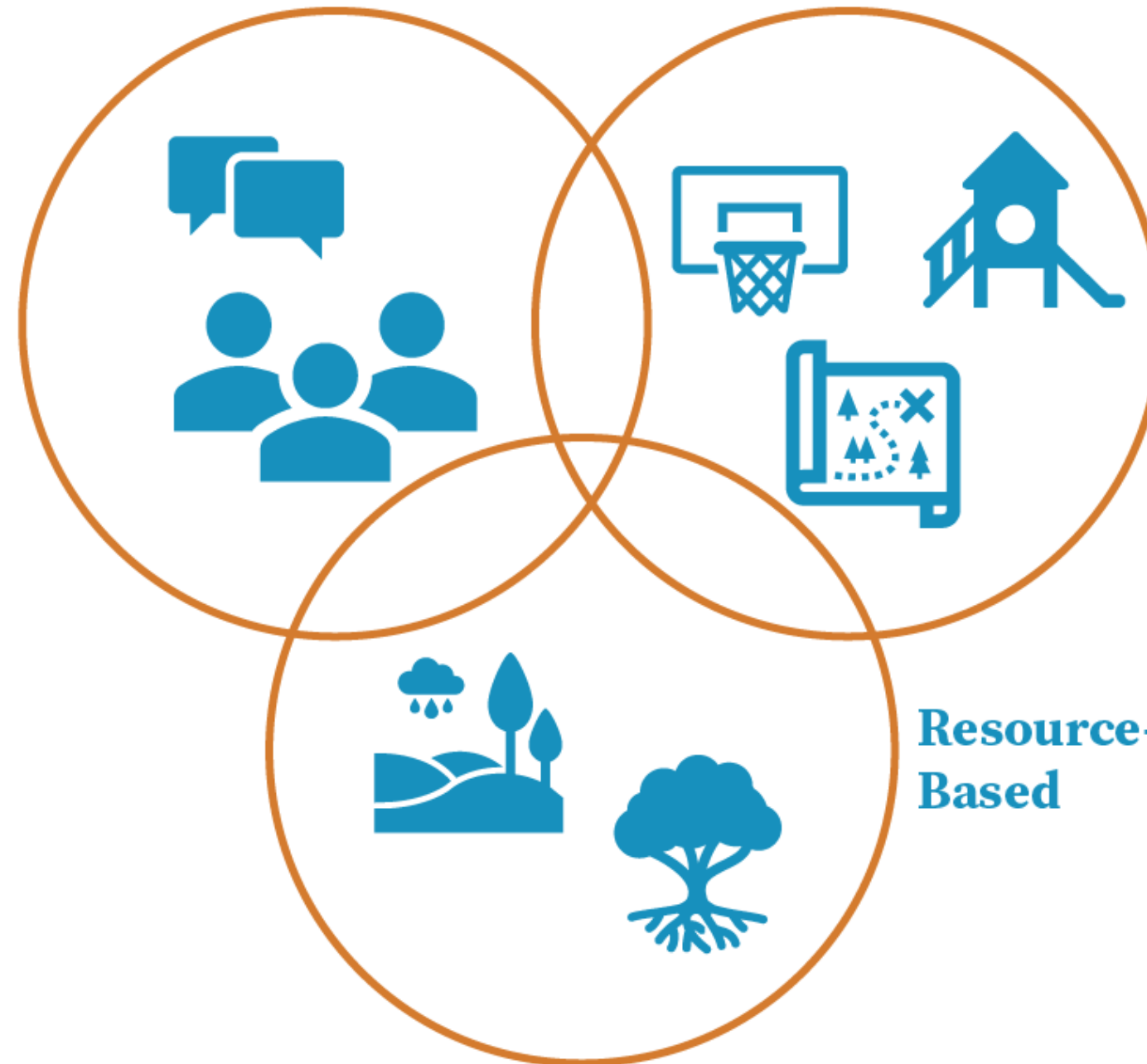


All the above photos show existing conditions in Crescent Bend Nature Park

# 3-Part Needs Assessment

Analyzes and summarizes public feedback to identify what the community wants and expects from the parks and recreation system.

**Demand-Based**



Analyzes parkland acreage, location and amenities in comparison with the location of the current population and future growth areas, based on industry standards.

Evaluates existing physical, man-made and natural resources to identify opportunities to leverage for public recreation benefit.

# Standards Based Assessment

## Acreage Level of Service

The acreage level of service defines the quantity of parkland acreage as a ratio to population. The results are expressed as park acreage per 1,000 residents. The analysis examines whether there is sufficient parkland for residents today and in the future.

| Park Classification   | Existing Level of Service (LOS) |   | Recommended Level of Service (2024) |  |                                    | Recommended Level of Service (2035)              |                                    |
|---|---------------------------------|---|-------------------------------------|--|------------------------------------|--|------------------------------------|
|   | Existing Acreage (2024)         | Current LOS (based on 42,545 population*) | Recommended Target LOS (2024-2035)  | 2024 Recommended Acreage (based on 42,545 pop.*) | Surplus/Deficit Acreage (2024) *** | 2035 Recommended Acreage (based on 56,302 pop.*) | Surplus/Deficit Acreage (2035) *** |
| <b>Close-to-Home Parks (focused on benefit to nearby residents)**</b> |                                 |   |                                     |  |                                    |  |                                    |
| Pocket Parks (City-owned)   | 7.4                             | 0.17 Ac/1,000 Residents                   | 0.25 Ac/1,000 Residents             | 10.6   | -3.2                               | 14.1   | -6.7                               |
| Pocket Parks (City + HOA)   | 7.9                             | 0.19 Ac/1,000 Residents                   |                                     |  | -2.7                               |  | -6.2                               |
| Neighborhood Parks (City-owned)                                       | 157.3                           | 3.7 Ac/1,000 Residents                    | 4.0 Ac/1,000 Residents              | 170.2  | -12.9                              | 225.2  | -67.9                              |
| Neighborhood Parks (City + HOA)                                       | 186.7                           | 4.4 Ac/1,000 Residents                    |                                     |  | 16.5                               |  | -38.5                              |
| Community Parks (City-owned)  | 71.1                            | 1.7 Ac/1,000 Residents                    | 5.0 Ac/1,000 Residents              | 212.7  | -141.6                             | 281.5  | -210.4                             |
| Community Parks (City + HOA)  | 71.1                            | 1.7 Ac/1,000 Residents                    |                                     |  | -141.6                             |  | -210.4                             |
| Close-to-Home Parks Subtotal (City-owned)                             | 235.8                           | 5.5 Ac/1,000 Residents                    | 9.25 Ac/1,000 Residents             | 393.5  | -157.7                             | 520.8  | -285.0                             |
| Close-to-Home Parks Subtotal (City + HOA)                             | 265.7                           | 6.2 Ac/1,000 Residents                    |                                     |  | -127.8                             |  | -255.1                             |
| <b>Other Parks Types** (All City-owned)</b>                           |                                 |   |                                     |  |                                    |  |                                    |
| Regional Parks  | 231.6                           | 5.4 Ac/1,000 Residents                    | 4.0 Ac/1,000 Residents              | 170.2  | 61.4                               | 225.2  | 6.4                                |
| Linear Parks/Greenways  | 60.8                            | 1.4 Ac/1,000 Residents                    | Varies                              | N/A  | N/A                                | N/A  | N/A                                |
| Open Space/Nature Park  | 67.9                            | 1.6 Ac/1,000 Residents                    | Varies                              | N/A  | N/A                                | N/A  | N/A                                |
| Special Purpose Parks   | 13.4                            | 0.3 Ac/1,000 Residents                    | Varies                              | N/A  | N/A                                | N/A  | N/A                                |
| Other Parks Subtotal  | 373.7                           | 8.8 Ac/1,000 Residents                    | Varies                              | N/A  | N/A                                | N/A  | N/A                                |
| <b>All Park Types (City-owned)</b>                                    | <b>609.5</b>                    | <b>14.3 Ac/1,000 Residents</b>            | <b>13.25 Ac/1,000 Residents</b>     | <b>563.7</b>                                     | <b>45.8</b>                        | <b>746.0</b>                                     | <b>-136.5</b>                      |
| <b>All Park Types (all facilities)</b>                                | <b>639.4</b>                    | <b>15.0 Ac/1,000 Residents</b>            |                                     |  | <b>75.7</b>                        |  | <b>-106.6</b>                      |

# Standards Based Assessment

## Facility Level of Service

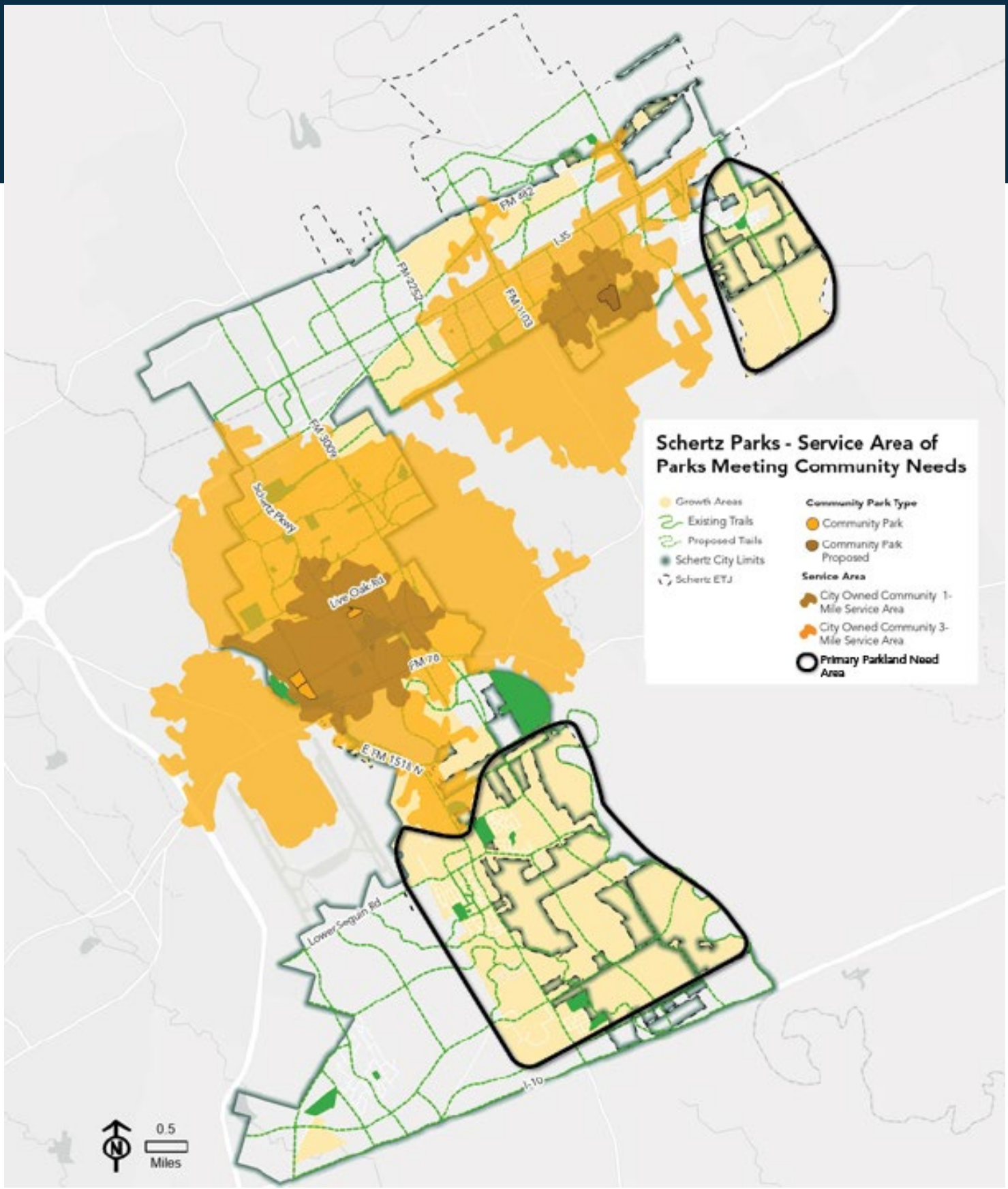
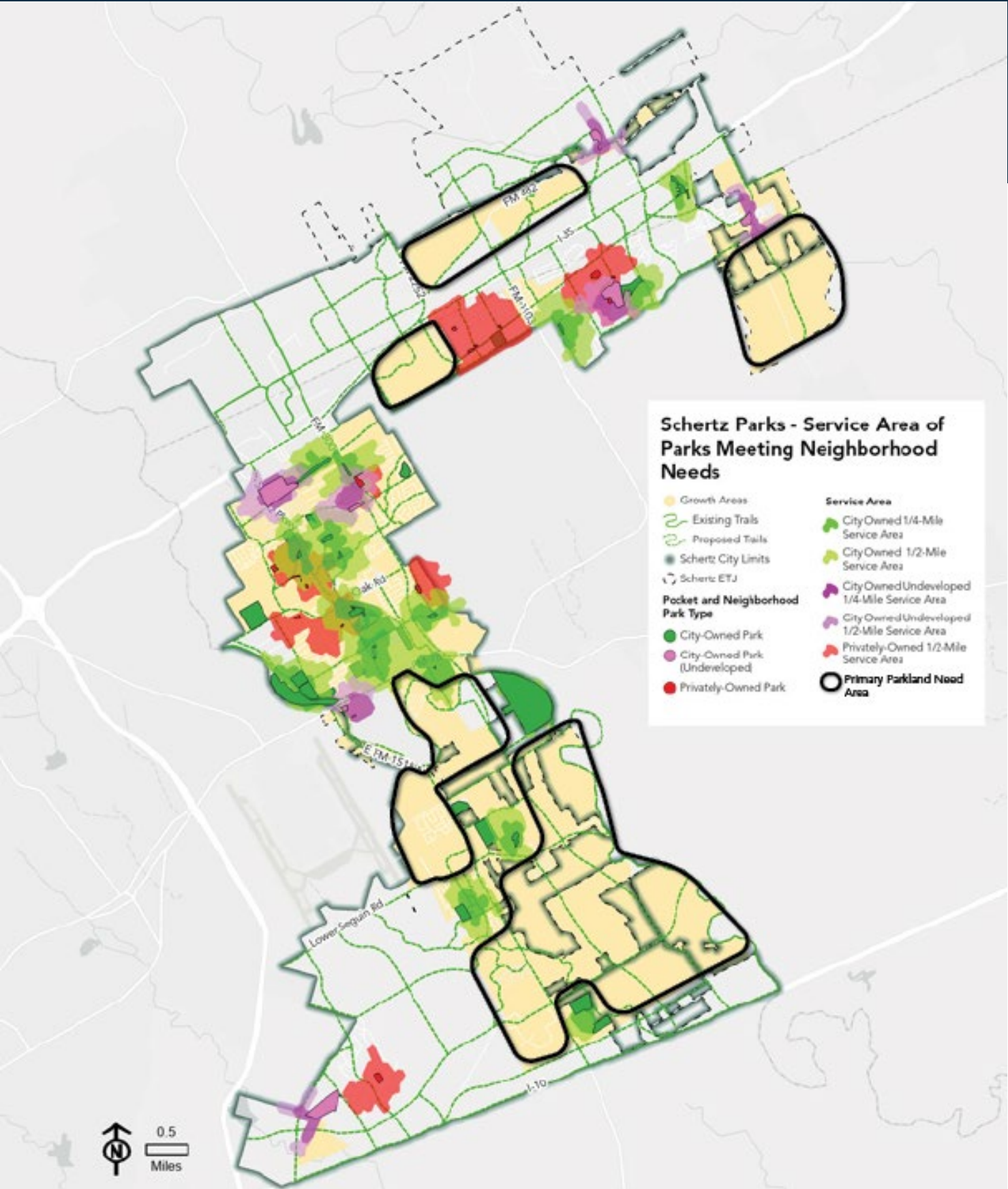
The spatial level of service looks at the location and distribution of different park types to identify underserved areas and where new parks may be needed.

|                             | Facility/Amenity  | Current Available <sup>^</sup> | Current LOS (1 Facility per # Residents) |  |              | Target LOS (Per Residents)     | 2024 Need (based on 42,545 pop.*) | 2024 Deficit or Surplus *** | 2035 Need (based on 56,302 pop.*) | 2035 Deficit or Surplus *** | 2024 NRPA Agency Review (some facility categories are not included in the Agency Review) |  |
|-----------------------------|---|--------------------------------|--|--|--------------|--------------------------------|-----------------------------------|-----------------------------|-----------------------------------|-----------------------------|--|--|
|                             |   |                                |  |  |              |                                |                                   |                             |                                   |                             | Cities 20,000-49,999   | Cities 50,000-99,999                           |
| Active                      | Baseball/Softball Fields                                  | 12                             | 3,545                                    |  |              | 1 per 3,500                    | 13                                | -1                          | 17                                | -5                          | Diamond fields 1 per 3,007   | Diamond fields 1 per 3,675                     |
|                             | Backstop  | 5                              | 8,509                                    |  |              | 1 per 6,000                    | 8                                 | -3                          | 10                                | -5                          |  |  |
|                             | Basketball Courts   | 0                              | 0  |  |              | 1 per 8,000                    | 6                                 | -6                          | 8                                 | -8                          | 1 per 7,501  | 1 per 8,363                                    |
|                             | Pickleball Court  | 0                              | 0  |  |              | 1 per 8,000                    | 6                                 | -6                          | 8                                 | -8                          | 1 per 7,737  | 1 per 10,500                                   |
|                             | Multipurpose Court (basketball, pickleball)               | 7                              | 6,078                                    |  |              | 1 per 8,000                    | 6                                 | 1                           | 8                                 | -1                          | 1 per 13,000   | 1 per 12,972                                   |
|                             | Disc Golf   | 0                              | 0  |  |              | 1 per city                     | 1                                 | -1                          | 1                                 | -1                          | 1 per 29,445   | 1 per 58,603                                   |
|                             | Fitness Equipment Circuit                                 | 0                              | 0  |  |              | 1 per 30,000                   | 2                                 | -2                          | 2                                 | -2                          | 1 per 27,262   | 1 per 35,000                                   |
|                             | Skate Park  | 1                              | 42,545                                   |  |              | 1 per city                     | 1                                 | 0                           | 1                                 | 0                           | 1 per 33,167   | 1 per 60,904                                   |
|                             | Multipurpose Field**                                      | 8                              | 5,318                                    |  |              | 1 per 4,000                    | 11                                | -3                          | 15                                | -7                          | Rectangular fields 1 per 3,333   | Rectangular fields 1 per 4,070                 |
|                             | Soccer Fields   | 12                             | 3,545                                    |  |              | 1 per 3,500                    | 13                                | -1                          | 17                                | -5                          |  |  |
|                             | Tennis Courts   | 0                              | 0  |  |              | 1 per 13,000                   | 4                                 | -4                          | 5                                 | -5                          | 1 per 5,461  | 1 per 5,865                                    |
| Volleyball Courts (Outdoor) | 0   | 0                              |  |  | 1 per 15,000 | 3                              | -3                                | 4                           | -4                                | 1 per 14,280                | 1 per 26,612   |  |
| Trails (miles)              | 20  | 2,127                          |  |  | 1 per 2,000  | 21.3                           | -1.3                              | 29                          | -9.0                              | Median 10 total miles       | Median 18.1 total miles  |  |
| Passive                     | Amphitheater/Outdoor Event Space                          | 2                              | 21,273                                   |  |              | 1 per 15,000                   | 3                                 | -1                          | 4                                 | -2                          |  |  |
|                             | Dog Park  | 1                              | 42,545                                   |  |              | 1 per 30,000                   | 2                                 | -1                          | 2                                 | -1                          | 1 per 27,508   | 1 per 55,135                                   |
|                             | Picnic Shelters/Pavilions                                 | 10                             | 4,255                                    |  |              | 1 per 3,000                    | 15                                | -5                          | 19                                | -9                          |  |  |
|                             | Picnic Facilities (e.g., public parks with picnic tables) | 14                             | 3,039                                    |  |              | In all publicly accessed parks | In all publicly accessed parks    | -26                         | In all publicly accessed parks    | -26                         |  |  |
|                             | Playscape Units   | 39                             | 1,091                                    |  |              | 1 per 1,200                    | 36                                | 3                           | 47                                | -8                          | Playground 1 per 3,105   | Playground 1 per 3,707                         |
| Water                       | Fishing Piers   | 1                              | 42,545                                   |  |              | 1 per 15,000                   | 3                                 | -2                          | 4                                 | -3                          |  |  |
|                             | Outdoor Aquatic Facility                                  | 1                              | 42,545                                   |  |              | 1 per 25,000                   | 2                                 | -1                          | 3                                 | -2                          | Pool: 1 per 27,081<br>Water park: 1 per 32,812   | Pool: 1 per 46,363<br>Water park: 1 per 76,780 |
|                             | Indoor Aquatic Facility                                   | 1                              | 42,545                                   |  |              | 1 per city                     | 1                                 | 0                           | 1                                 | 0                           | 1 per 31,000   | 1 per 60,824                                   |
|                             | Splash Pad  | 2                              | 21,273                                   |  |              | 1 per 6,000                    | 8                                 | -6                          | 10                                | -8                          | 1 per 30,629   | 1 per 54,100                                   |
| Misc.                       | Recreation Center   | 1                              | 42,545                                   |  |              | 1 per 30,000                   | 2                                 | -1                          | 2                                 | -1                          | 1 per 24,486   | 1 per 39,886                                   |
|                             | Other Quality of Life Facilities ^^                       | 6                              | 7,091                                    |  |              | Where feasible                 | Where feasible                    | Varies                      | Where feasible                    | Varies                      |  |  |
|                             | Restrooms/Portable (in parks)                             | 9                              | 4,727                                    |  |              | Where feasible                 | Where feasible                    | Varies                      | Where feasible                    | Varies                      |  |  |

# Standards Based Assessment

## Spatial Level of Service - Parks

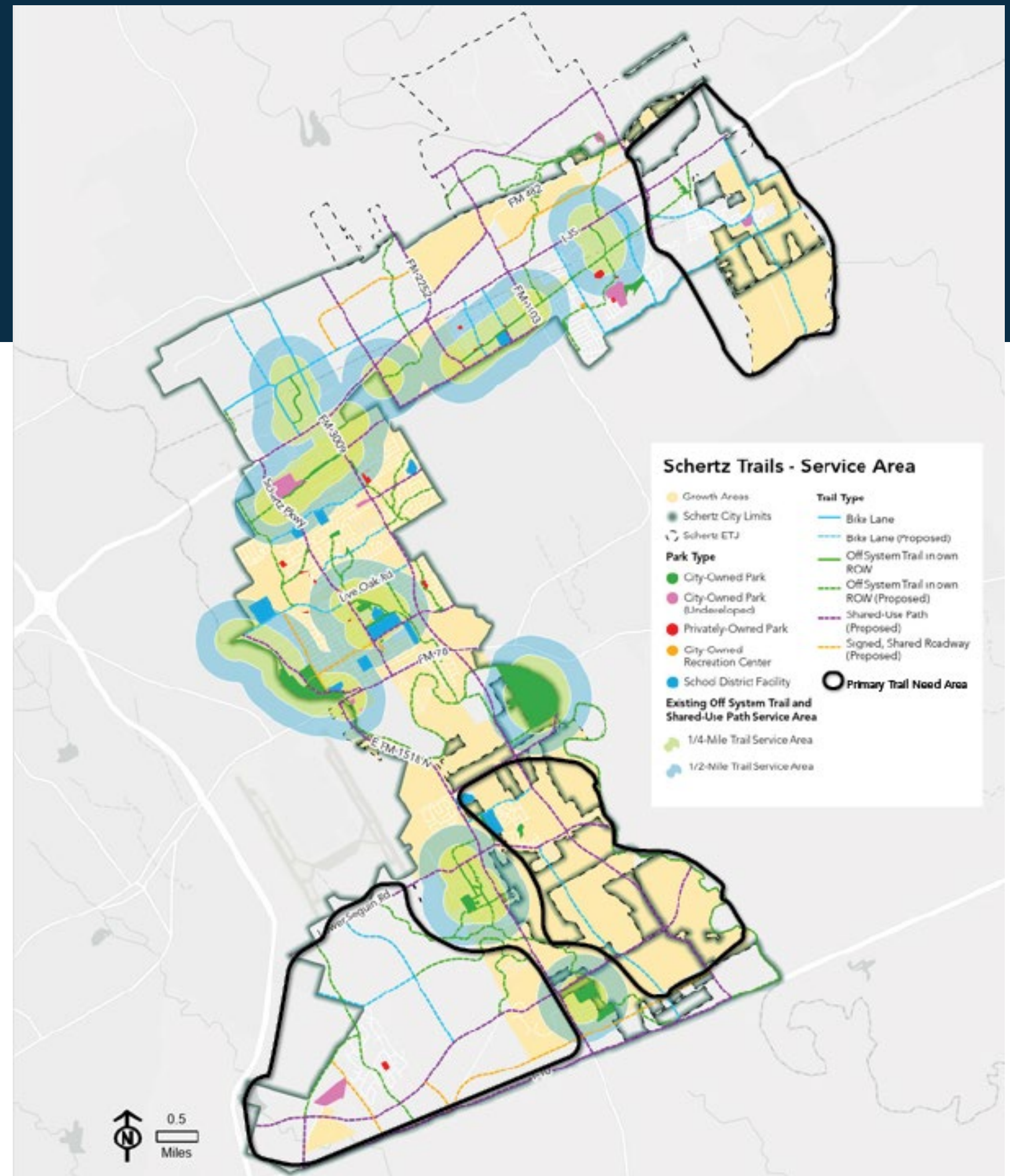
The spatial level of service looks at the location and distribution of different park types to identify underserved areas and where new parks may be needed.



# Standards Based Assessment

## Spatial Level of Service – Trails

A level of service assessment was created for trails by placing a ¼ mile and ½ mile buffer around existing shared-use paths and off-system trails. Existing bike lanes and shared roadways were not used to calculate buffers, nor were any proposed trails.



# Resource Based Assessment

- Creeks and Greenbelts
- Topography
- Utility Corridors



Oak Ridge Park



Hilltop Park



Dry Comal Creek Park

# Top Priority Needs

| New facilities needed based on community input   | New facilities needed based on level of service   | Upgraded facilities needed based on existing condition   |
|--|---|--|
| <ol style="list-style-type: none"> <li>1. Trails and linear parks</li> <li>2. Places to relax and enjoy nature</li> <li>3. Shaded playgrounds</li> <li>4. Water access, including fishing and kayaking</li> <li>5. Fitness equipment</li> <li>6. Sports facilities</li> <li>7. Splash pads</li> </ol>  | <ol style="list-style-type: none"> <li>1. Shaded picnic facilities, shelters and pavilions</li> <li>2. Baseball/softball Fields</li> <li>3. Trails</li> <li>4. Basketball court</li> <li>5. Pickleball court</li> <li>6. Playscapes</li> <li>7. Splash pads</li> <li>8. Dog park</li> </ol> | <ol style="list-style-type: none"> <li>1. Shade, generally</li> <li>2. Improved pool</li> <li>3. Upgraded play equipment</li> <li>4. Enhanced maintenance and beautification</li> <li>5. Improved accessibility, generally</li> <li>6. Improved softball/baseball fields</li> </ol>  |
| Top cumulative outdoor facility needs  |   | Top cumulative indoor facility needs   |
| <ol style="list-style-type: none"> <li>1. Trails, especially nature trails</li> <li>2. Access to nature and natural waterbodies</li> <li>3. Improved playground equipment/inclusive playgrounds</li> <li>4. Shaded picnic facilities, shelters and pavilions</li> <li>5. Splash pads and pools</li> <li>6. Events pavilion and amphitheatre</li> <li>7. Baseball/softball fields</li> <li>8. Sports courts (basketball/pickleball)</li> <li>9. Community gardens</li> <li>10. Fitness equipment</li> </ol> |   | <ol style="list-style-type: none"> <li>1. Indoor multipurpose gym (basketball/volleyball)</li> <li>2. Indoor fitness</li> <li>3. Recreation/community center with programming and services</li> <li>4. Library services</li> <li>5. Office/admin space and storage for sports leagues</li> <li>6. Commercial kitchen spaces</li> </ol> |

# Parks Goals



Goal 1: The City will proactively acquire parkland and open space acreage to provide physical access to all existing and future residents of Schertz.



Goal 2: The City will update existing parks and improve undeveloped parkland to accommodate the changing needs of the communities.



Goal 3: The City will implement system-wide improvements that enhance access, usability, and aesthetics of existing and future parks.



Goal 4: The City will provide recreational facilities and programs that enhance the quality of life and accessibility of services for Schertz residents.



Goal 5: The City will maintain parks in a way that promotes full utilization of park spaces and aligns with community values.



Goal 6: The City will pursue/continue partnerships and seek diverse funding strategies to support the expansion of parks and recreational options.

# Action Plan

| Rank  | Action Items | Initiation Timeframe  |                       |                          |         | Potential Cost Range |   |
|---|--------------|---|-----------------------|--------------------------|---------|----------------------|---|
|   |              | Short-term<br>(1-2 yrs)   | Mid-term<br>(3-7 yrs) | Long-term<br>(8-10+ yrs) | Ongoing |                      |   |
| Goal 1: The City will proactively acquire parkland and open space acreage to provide physical access to all existing and future residents of Schertz. |              |   |                       |                          |         |                      |   |
| 1   | 1.3          | Update the Parkland Dedication Ordinance.   | ◆                     | ◆                        |         |                      | - |
| 2   | 1.1          | Proactively pursue the acquisition of additional parkland acreage in the target areas.  |                       | ◆                        |         |                      | - |
| 3   | 1.2          | Proactively pursue the acquisition of additional parkland acreage along Cibolo Creek.   |                       | ◆                        |         |                      | - |
| 4   | 1.5          | Keep parks data and GIS layers updated between Plan updates so there is sufficient and up-to-date information available for subsequent updates. | ◆                     |                          |         |                      | - |
| 5   | 1.4          | Keep the PROST Plan updated.  |                       | ◆                        |         | ◆                    | - |

City of Schertz PROST Plan

# Q&A

---

