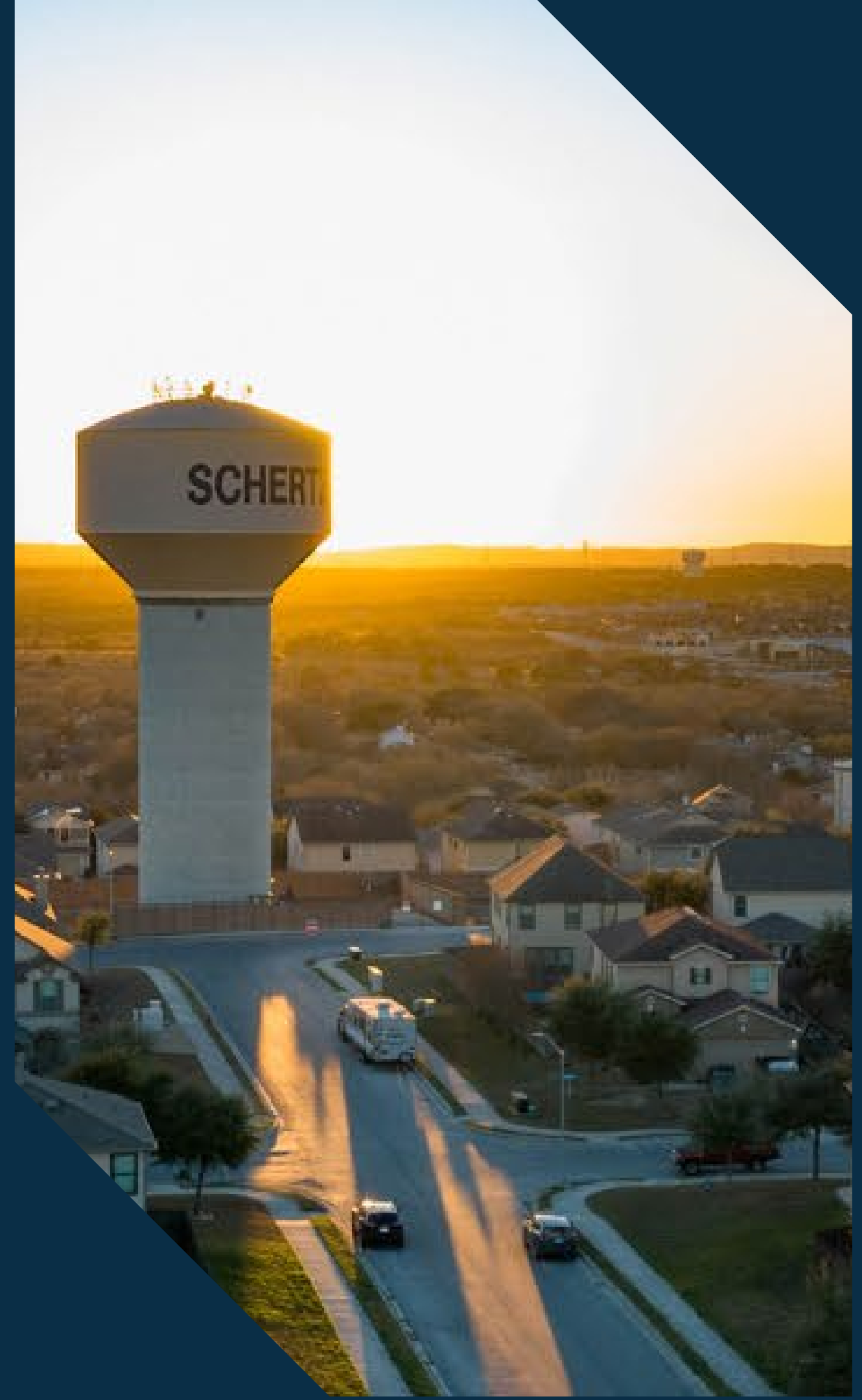


City of Schertz | Comprehensive Plan

Parks, Recreation and Open Space Master Plan

July 22, 2024

Parks Board Briefing



Meeting Agenda

Inventory Overview

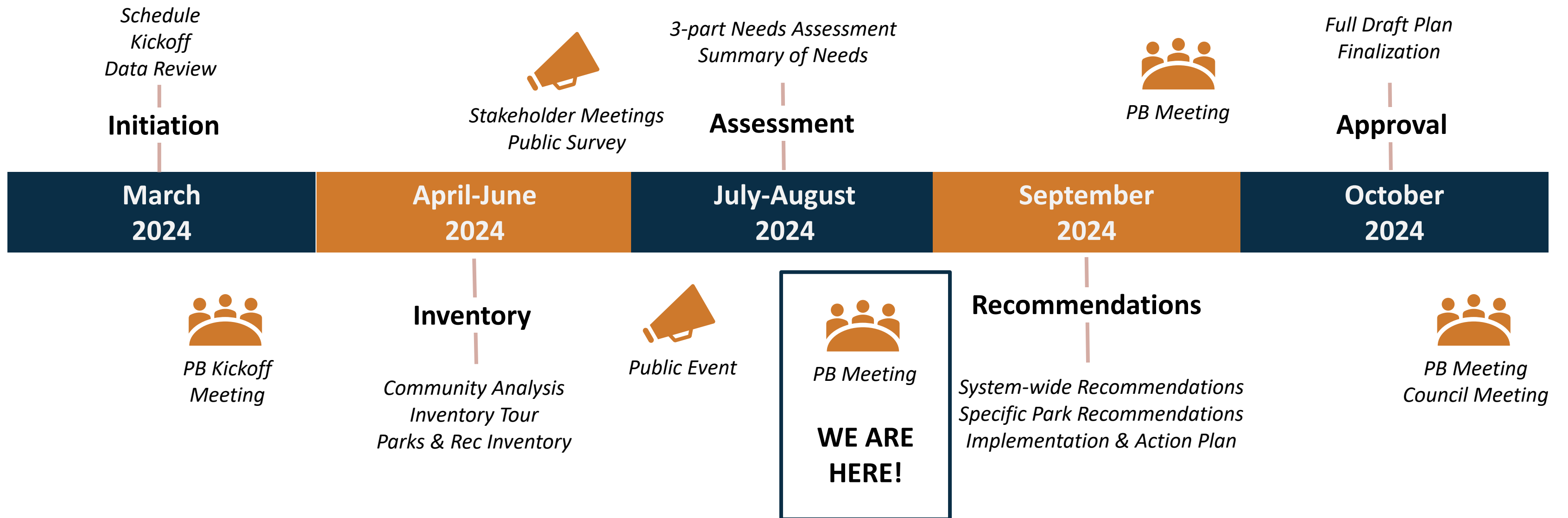
Preliminary Survey Feedback

Draft Needs Assessment

Discussion

Project Timeline

March/April 2024
COMP PLAN ADOPTION



City of Schertz

Inventory Overview



Park Classifications



Gutierrez Garden Park



Wendy Swan Memorial Park



Pickrell Park



Crescent Bend Nature Park



Great Northern Trail



Dry Comal Creek Nature Park



Schertz Skate Park

Pocket Parks

- **Typ. Size:** 0.25-1.0 ac
- **Service Area:** ¼ mile radius
- **Common Features:** Playground, picnic amenities

Neighborhood Parks

- **Typ. Size:** 1-10 ac
- **Service Area:** ¼ - ½ mile radius
- **Common Features:** Playground, sports court, trail, pavilion, multi-use lawn

Community Parks

- **Typ. Size:** 10-100 ac
- **Service Area:** 1 - 3 mile radius
- **Common Features:** Athletic fields, pool, trails, signature open spaces, amphitheater

Regional Parks

- **Typ. Size:** Varies
- **Service Area:** Up to 50-mile radius (varies)
- **Common Features:** nature areas, trails, athletic complex, event spaces

Greenbelts and Linear Parks

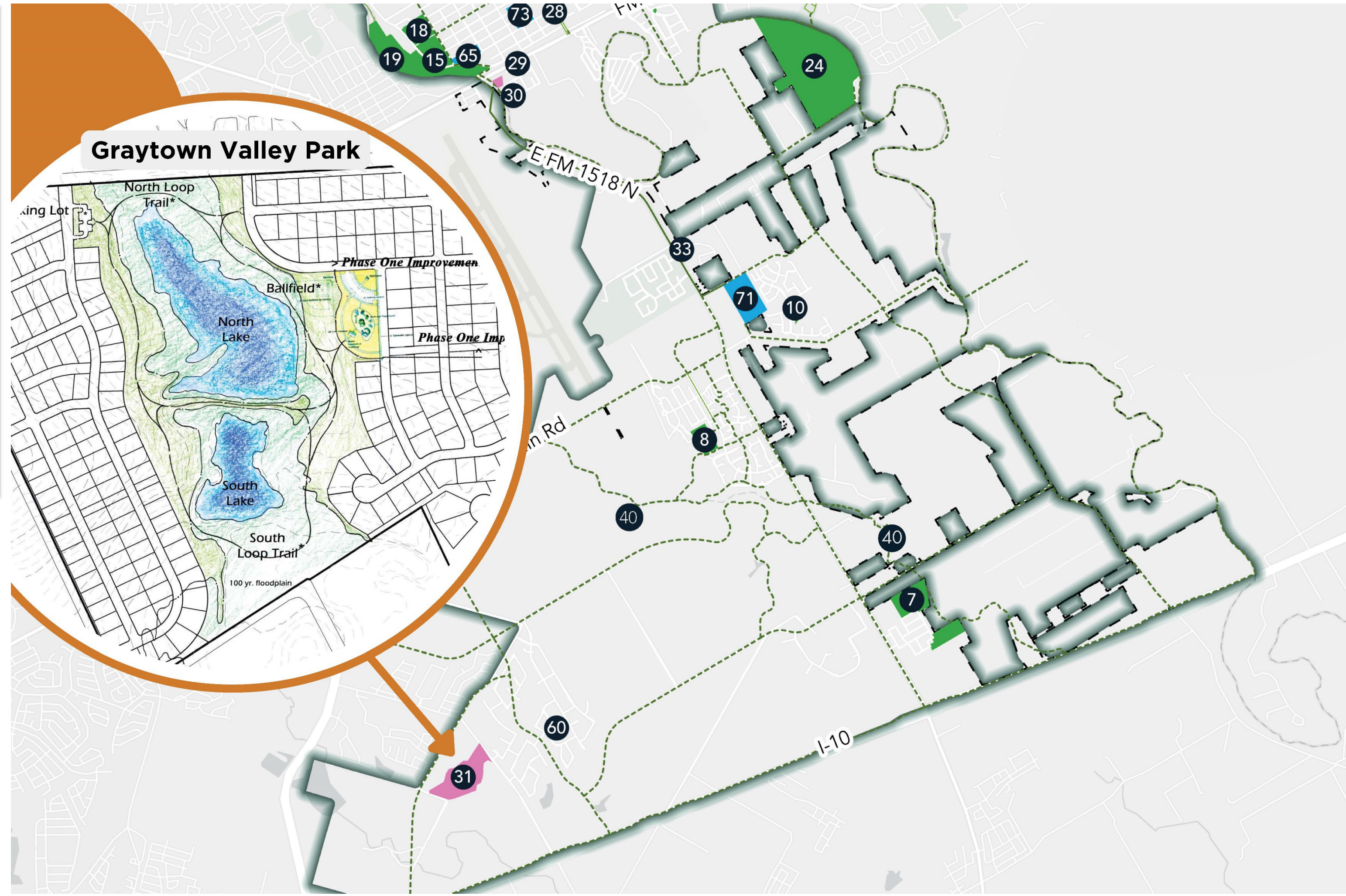
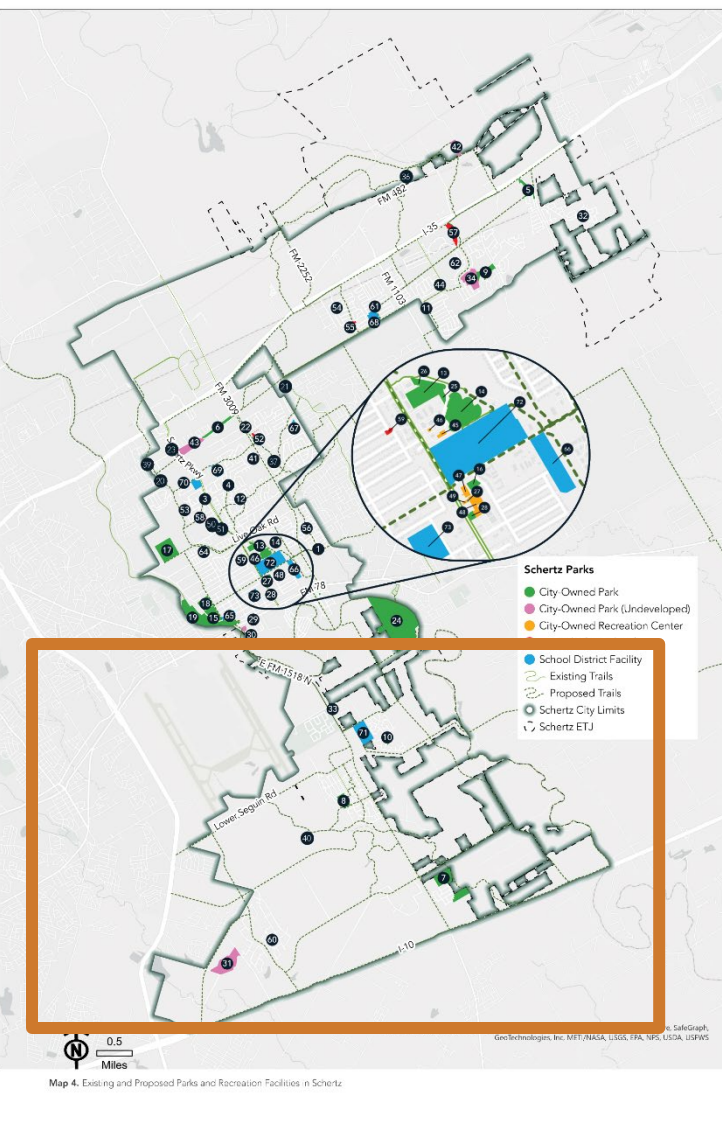
- **Typ. Size:** Varies
- **Service Area:** Varies
- **Common Features:** Trails

Open Space/ Nature Park

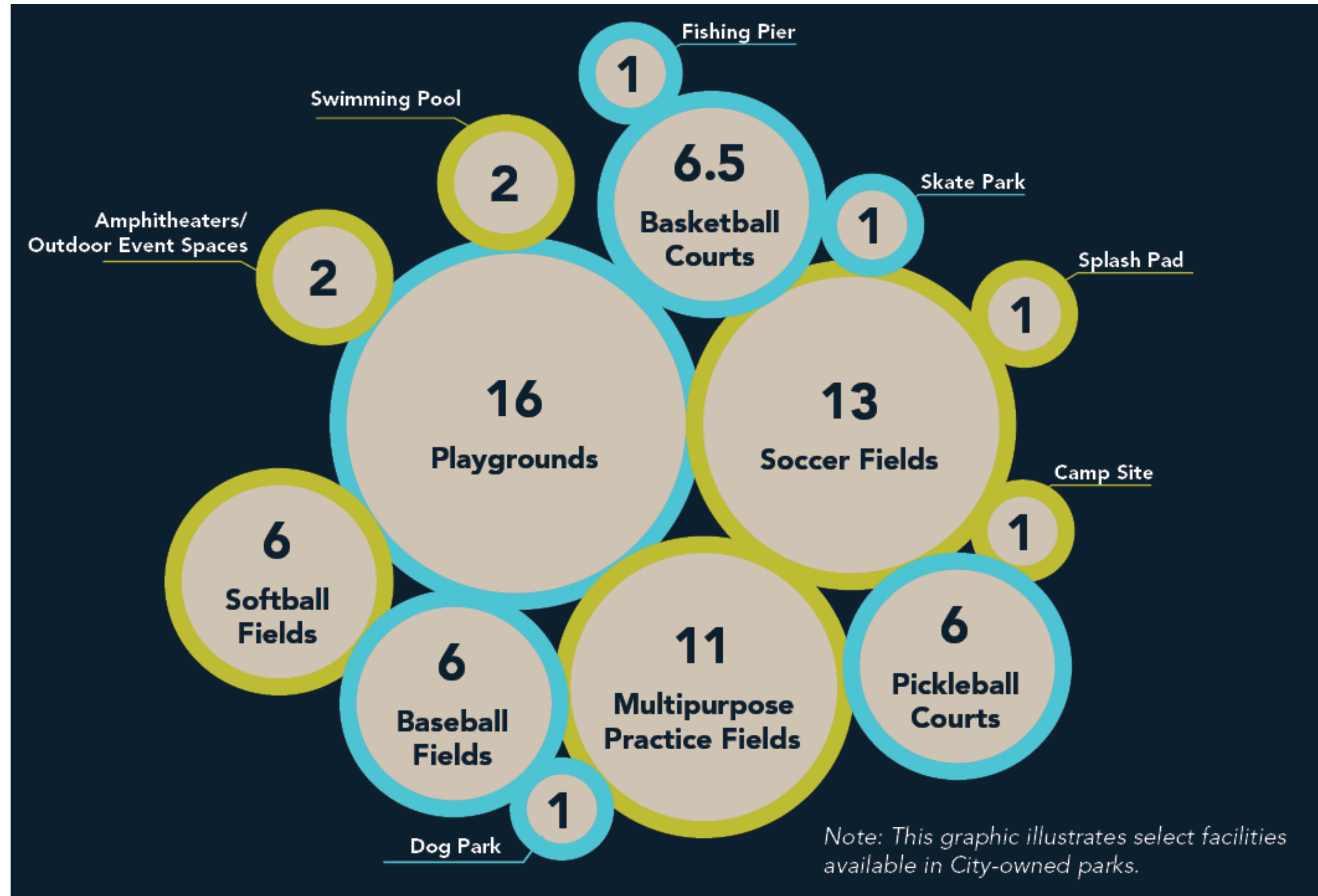
- **Typ. Size:** Varies
- **Service Area:** Varies
- **Common Features:** Trails, observation points, picnic areas

Special Use Parks

- **Typ. Size:** Varies
- **Service Area:** Varies
- **Common Features:** Pool, skate park, dog park, tennis complex, golf course



- City-owned parks ~586 acres
 - 25 Developed
 - 9 Properties designated for parks (Proposed Parks)
- 6 City-owned recreation facilities
- 15 Privately owned/HOA parks ~37 acres
- Schertz-Cibolo-Universal City ISD facilities (not currently open to the public) ~163 acres
- Recreational programming (sports leagues, festivals, etc)



Profiles

1. Cibolo Creek String of Parks
2. Community Circle Park
3. Crescent Bend Nature Park
4. Cypress Point Park
5. Dry Comal Creek Nature Park
6. Heritage Oaks Park
7. Hilltop/Homestead Park
8. Live Oak Hills + Forest Ridge Park
9. North Center
10. Pickrell + Thulemeyer Park
11. Unnamed Graytown Valley Park
12. Unnamed Hallie's Cove Park
13. Unnamed Parklands Park

Dry Comal Creek Nature Park

Location and Access

The Dry Comal Creek Nature Park is a recently annexed, undeveloped park located along FM 482 adjacent to Dry Comal Creek. It is in the far northeast part of the City, and a portion of the park is in Comal Township. The park is located along Comal Creek and includes a pond with wetland habitat. It is also adjacent to the historic Saint Joseph's Cemetery and is across the street from St. Joseph's German Chapel, which was designated as a historical site by the Schertz Historic Preservation Committee in 2011. It is accessed by neighborhood streets and is adjacent to single-family homes.

Existing Conditions

The area has drainage issues and is prone to flooding. The park is conceptualized to be developed as nature park in partnership between the City and Great Springs Project.

Opportunities for Improvement

Opportunities for future improvements and new amenities could include:

- Implement the existing concept plan shown on the following page to improve access and introduce amenities such as parking, boardwalks and trailheads.
- Develop the park as part of a greater cultural site celebrating local history.
- Provide buffering from the adjacent neighborhoods.
- Enhance the site with habitat restoration.
- Identify opportunities for recreational programming including aquatic recreation, nature play and education.



Map 9. Dry Comal Creek Nature Park Location

About the Park

Park Location	Park Size	Park Type
Intersection of Bunker Street and FM 482	10.6 Acres	Open Space

Park Features

Under Construction	Large Trees
Natural Areas	Mowed Field on Upper Portion of Site
Pond and Wetland Habitat	



Proposed Trail Connections to Dry Comal Creek Park (Source: City of Schertz)



Trailhead Vision for Dry Comal Creek Plan (Source: City of Schertz)



Boardwalk Vision for Dry Comal Creek Plan (Source: City of Schertz)

City of Schertz

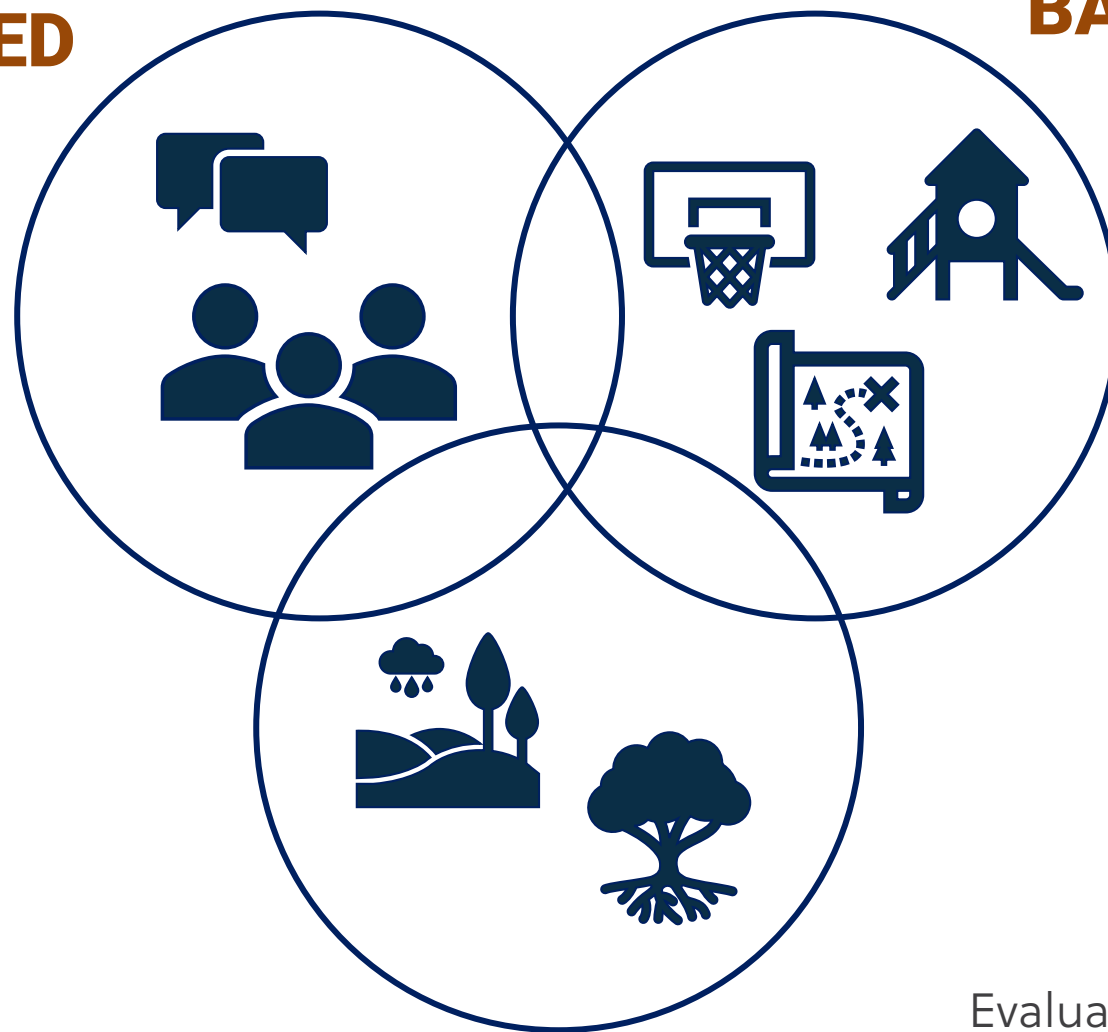
Preliminary Needs Assessment



3-Part Needs Assessment

DEMAND-BASED

Analyzes and summarizes public feedback to identify what the community wants and expects from the parks and recreation system.



STANDARDS-BASED

Analyzes parkland acreage, location and amenities in comparison with the location of the current population and future growth areas, based on industry standards.

RESOURCE-BASED

Evaluates existing physical, man-made and natural resources to identify opportunities to leverage for public recreation benefit.

Level of Service Targets: Parkland Acreage

2024 NRPA Agency Review: Acres of Parkland per 1,000 residents

	Cities 20,000-49,999 pop.	Cities 50,000-99,999 pop.
Lower	6.2	4.8
Median	11.2	10.2
Upper	18	17.4

Park Classification	Existing Level of Service (LOS)			Recommended Level of Service (2024)			Recommended Level of Service (2035)		
	Existing Acreage (2024)	Current LOS (based on 42,545 population*)		Recommended Target LOS (2024-2035)	2024 Recommended Acreage (based on 42,545 population*)	Surplus/Deficit Acreages (2024)	2035 Recommended Acreage (based on 56,302 population*)	Surplus/Deficit Acreages (2035)	
Close-to-home Parks (focused on benefit to nearby residents)**									
Pocket Parks <i>(City-owned)</i>	7.4	0.17	Ac/1,000 Residents	0.25	Ac/1,000 Residents	10.6	-3.2	14.1	-6.7
Pocket Parks <i>(all facilities)</i>	7.9	0.19	Ac/1,000 Residents				-2.7		-6.2
Neighborhood Parks <i>(City-owned)</i>	159.1	3.7	Ac/1,000 Residents	4.0	Ac/1,000 Residents	170.2	-11.1	225.2	-66.1
Neighborhood Parks <i>(all facilities)</i>	195.2	4.6	Ac/1,000 Residents				25.0		-30.0
Community Parks <i>(City-owned)</i>	72.3	1.7	Ac/1,000 Residents	5.0	Ac/1,000 Residents	212.7	-140.4	281.5	-209.2
Community Parks <i>(all facilities)</i>	72.3	1.7	Ac/1,000 Residents				-140.4		-209.2
Close-to-Home Parks Subtotal <i>(City-owned)</i>	238.8	5.6	Ac/1,000 Residents	9.25	Ac/1,000 Residents	393.5	-154.7	520.8	-282.0
Close-to-Home Parks Subtotal <i>(all facilities)</i>	275.4	6.5	Ac/1,000 Residents				-118.1		-245.4
Other Parks Types**									
Regional Parks <i>(City-owned)</i>	231.6	5.4	Ac/1,000 Residents	4.0	Ac/1,000 Residents	170.2	61.4	225.2	6.4
Regional Parks <i>(all facilities)</i>	231.6	5.4	Ac/1,000 Residents				231.6		231.6
Linear Parks/Greenways <i>(City-owned)</i>	60.8	1.4	Ac/1,000 Residents		Varies	N/A	N/A	N/A	N/A
Linear Parks/Greenways <i>(all facilities)</i>	60.8	1.4	Ac/1,000 Residents		Varies	N/A	N/A	N/A	N/A
Open Space/Nature Park <i>(City-owned)</i>	67.9	1.6	Ac/1,000 Residents		Varies	N/A	N/A	N/A	N/A
Open Space/Nature Park <i>(all facilities)</i>	67.9	1.6	Ac/1,000 Residents		Varies	N/A	N/A	N/A	N/A
Special Purpose Parks <i>(City-owned)</i>	13.4	0.3	Ac/1,000 Residents		Varies	N/A	N/A	N/A	N/A
Special Purpose Parks <i>(all facilities)</i>	13.4	0.3	Ac/1,000 Residents		Varies	N/A	N/A	N/A	N/A
Other Parks Subtotal <i>(City-owned)</i>	373.7	8.8	Ac/1,000 Residents		Varies	N/A	N/A	N/A	N/A
Other Parks Subtotal <i>(all facilities)</i>	373.7	8.8	Ac/1,000 Residents		Varies	N/A	N/A	N/A	N/A
All Park Types <i>(City-owned)</i>	612.5	14.4	Ac/1,000 Residents	13.25	Ac/1,000 Residents	563.7	48.8	746.0	-133.5
All Park Types <i>(all facilities)</i>	649.1	15.3	Ac/1,000 Residents				85.4		-96.9

*Source:

Current Population: United States Census Bureau, 2022 ACS 5-Year Population Estimates

2035 Population: 2% Growth Rate Projections from Texas Water Development Board 2030 Population Estimate as of July 17, 2024 (51,020)

** These acreages include land that will be deeded to the City through development agreements

Level of Service Targets: Facilities/Amenities

		Current Available [^]	Current LOS (1 Facility per # Residents)	Target LOS (Per Residents)	2024 Need (based on 42,545 pop.*)	2024 Deficit or Surplus	2035 Need (based on 56,302 pop.*)	2035 Deficit or Surplus	2024 NRPA Agency Review	
									Cities 20,000-49,999	Cities 50,000-99,999
Active	Baseball Fields	6	7,091	1 per 3,500	13	-7	17	-11	Diamond fields	Diamond fields
	Softball Fields	6	7,091	1 per 4,000	11	-5	15	-9	1 per 3,007	1 per 3,675
	Backstop	18	2,364	1 per 6,000	8	10	10	8		
	Basketball Courts	6.5	6,545	1 per 8,000	6	0.5	8	-1.5	1 per 7,501	1 per 8,363
	Disc Golf	1	42,545	1 per city	1	0	1	0	1 per 29,445	1 per 58,603
	Fitness Equipment Circuit	1	42,545	1 per 30,000	2	-1	2	-1	1 per 27,262	1 per 35,000
	Pickleball Court	6	7,091	1 per 4,000	11	-5	15	-9	1 per 7,737	1 per 10,500
	Skate Park	1	42,545	1 per city	1	0	1	0	1 per 33,167	1 per 60,904
	Multipurpose Field**	11	3,868	1 per 4,000	11	0	15	-4	Rectangular fields	Rectangular fields
	Soccer Fields	13	3,273	1 per 3,500	13	0	17	-4	1 per 3,333	1 per 4,070
	Tennis Courts	0	0	1 per 13,000	4	-4	5	-5	1 per 5,461	1 per 5,865
	Volleyball Courts (Outdoor)	0	0	1 per 15,000	3	-3	4	-4	1 per 14,280	1 per 26,612
Trails (miles)	18.7	2,275	1 per 2,000	21.3	-2.6	29	-10.3	Median 10 total miles	Median 18.1 total miles	
Passive	Amphitheater/Outdoor Event Space	2	21,273	1 per 15,000	3	-1	4	-2		
	Dog Park	1	42,545	1 per city	1	0	1	0	1 per 27,508	1 per 55,135
	Picnic Pavilions	10	4,255	1 per 3,000	15	-5	19	-9		
	Picnic Facilities (e.g., public parks with picnic tables)	14	3,039	In all publicly accessed parks	In all publicly accessed parks	-29	In all publicly accessed parks	-29		
	Playgrounds	16	2,659	1 per 3,500	13	3	17	-1	1 per 3,105	1 per 3,707
Water	Fishing Piers	1	42,545	1 per 15,000	3	-2	4	-3		
	Swimming Pool/Aquatic Facility	3	14,182	1 per 30,000	2	1	2	1	1 per 27,081	1 per 46,353
	Splash Pad	1	42,545	1 per 6,000	8	-7	10	-9	1 per 30,629	1 per 54,100
Misc.	Recreation Center	6	0	1 per 25,000	2	4	3	3	1 per 24,486	1 per 39,886
	Restrooms/Portable (in parks)	8	5,318	Where feasible	Where feasible	Varies	Where feasible	Varies		

*Source:

Current Population: United States Census Bureau, July 1, 2022 Population Estimates

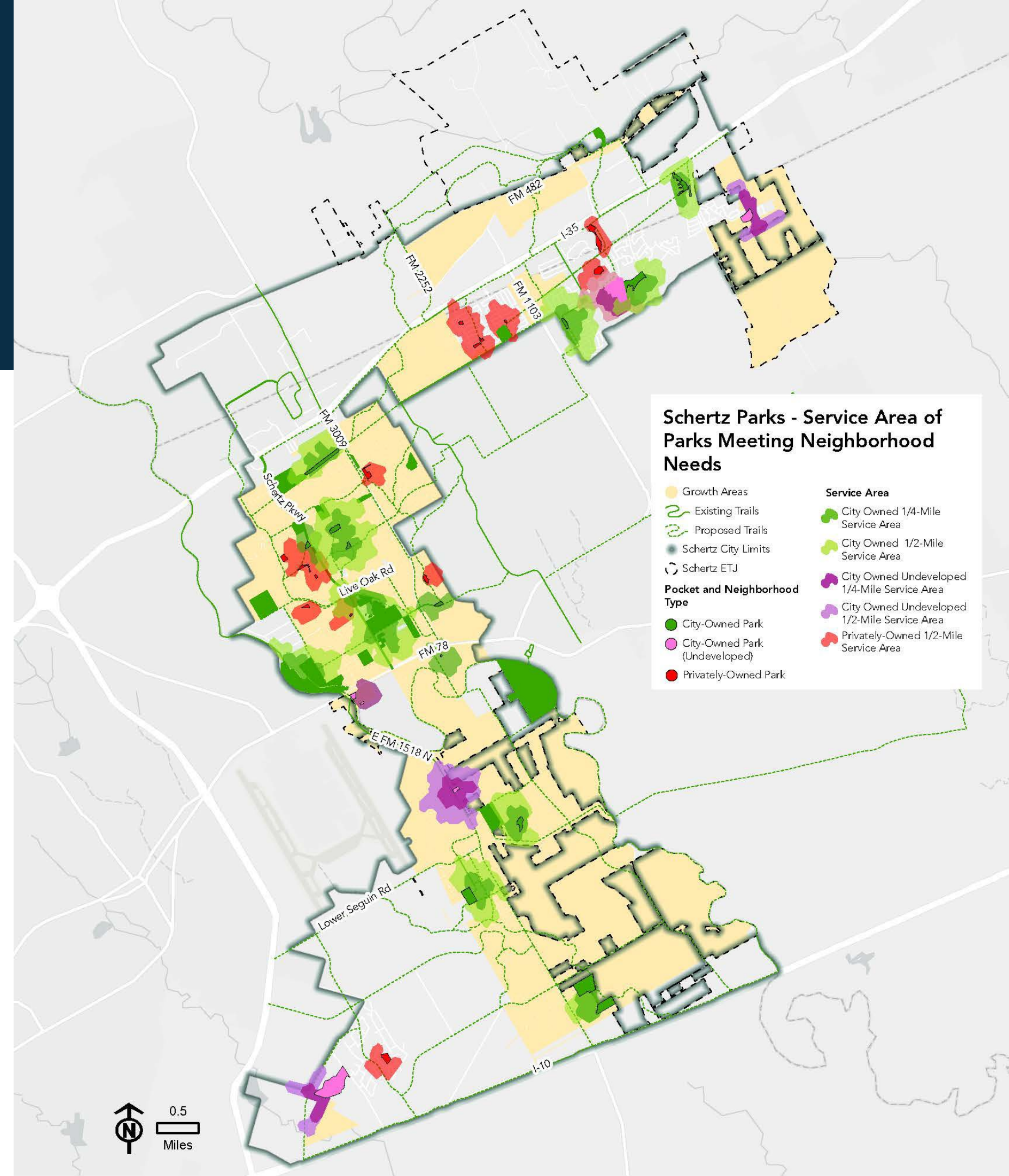
2035 Population: 2.5% Growth Rate Projections in Land Use and Development Chapter

** Multipurpose field should be appropriate for soccer, football and other rectangular field uses

[^] Excludes ISD and non-publicly accessible facilities (e.g., HOA facilities)

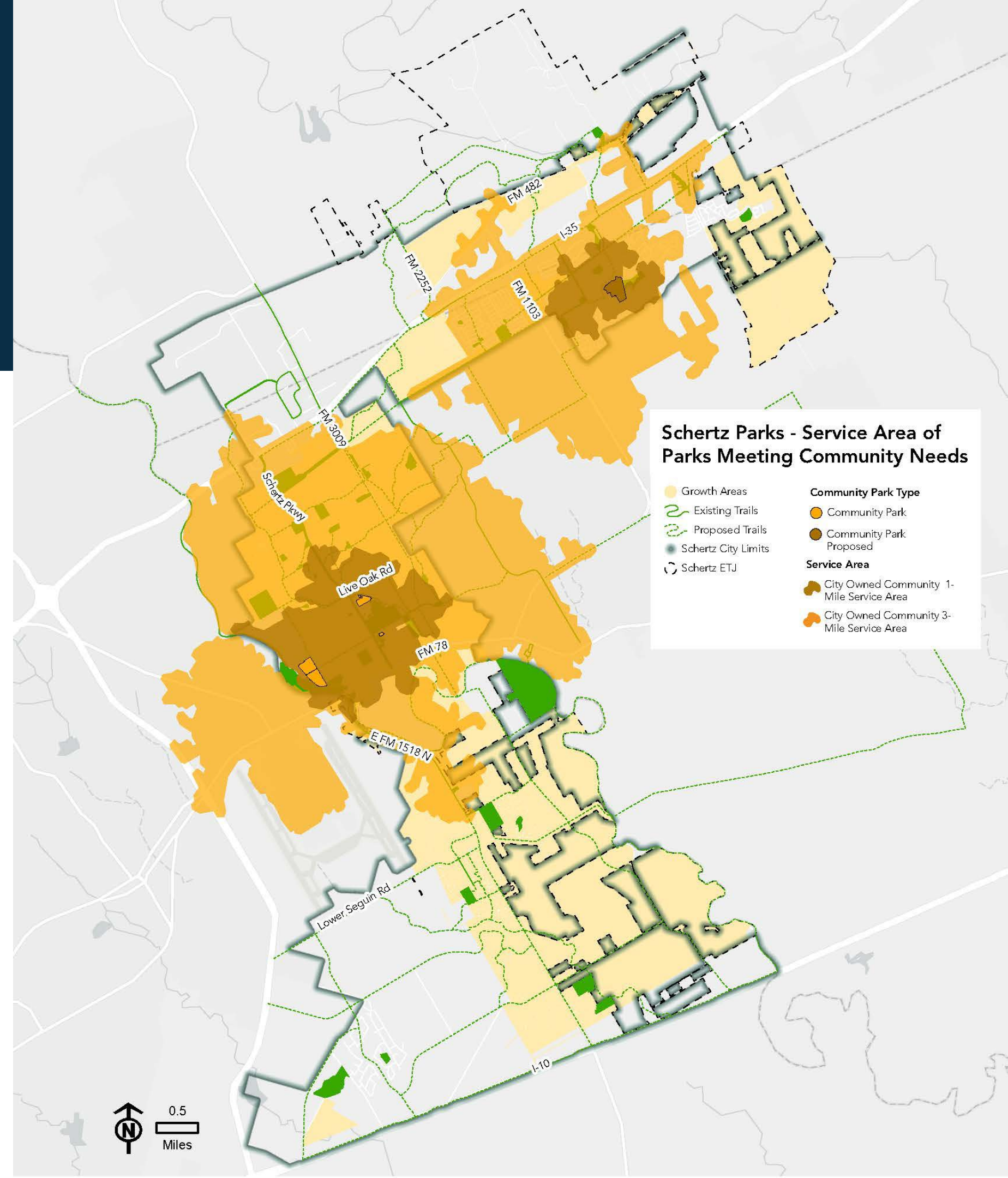
Level of Service: Parks Meeting Neighborhood Needs

- Parks typically serving people within a ¼-mile (~5 min) to ½-mile (~10 min) walk
 - Pocket parks
 - Neighborhood parks
 - Community parks (can serve as local park for residents within walking distance)
- Note service area gaps within Schertz's growth areas (areas of existing and future residential development)



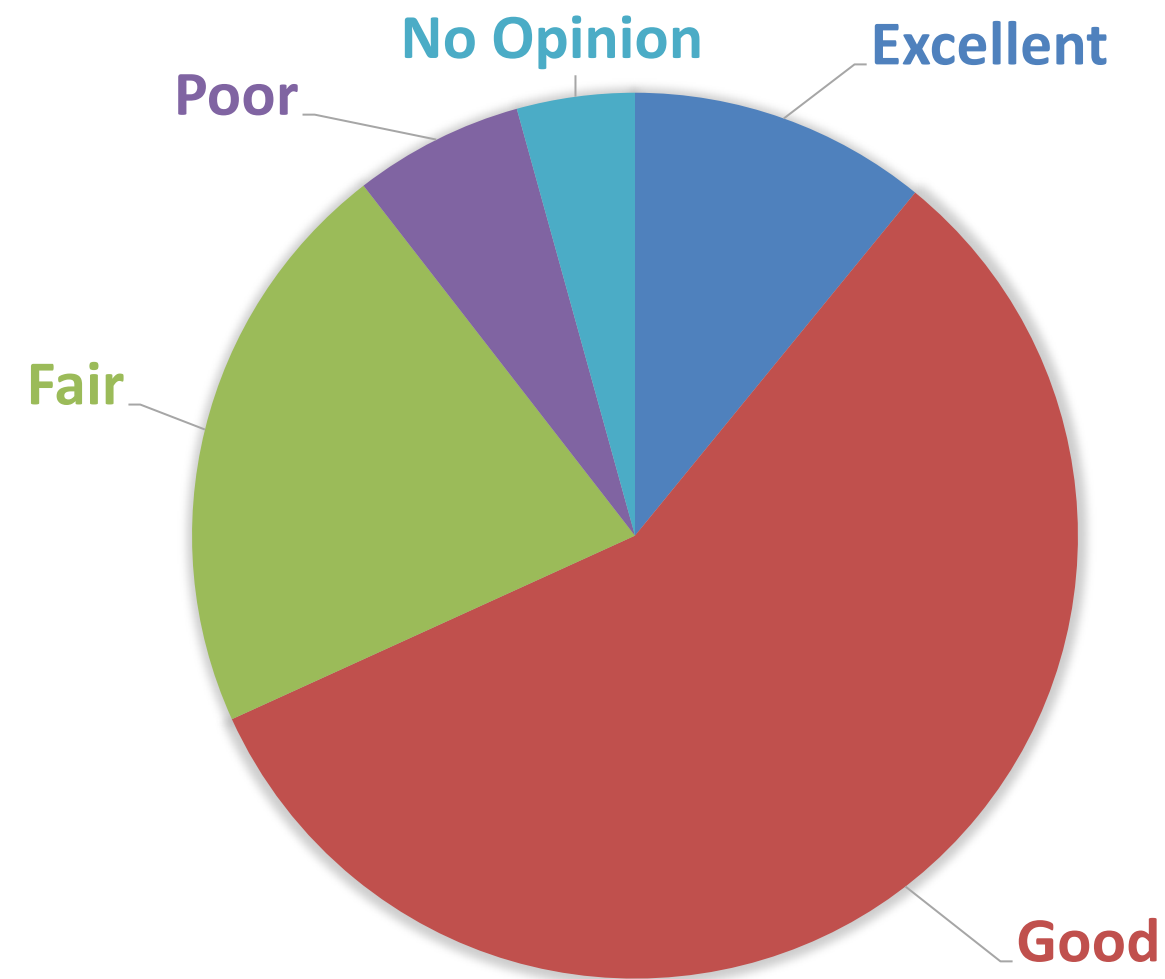
Level of Service: Parks Meeting Community Needs

- Parks typically serving people within a 1-mile to 3-mile drive
 - Community parks
- Note service area gaps within Schertz's growth areas (areas of existing and future residential development)



What We've Heard

HOW DO YOU RATE PARKS IN SCHERTZ?



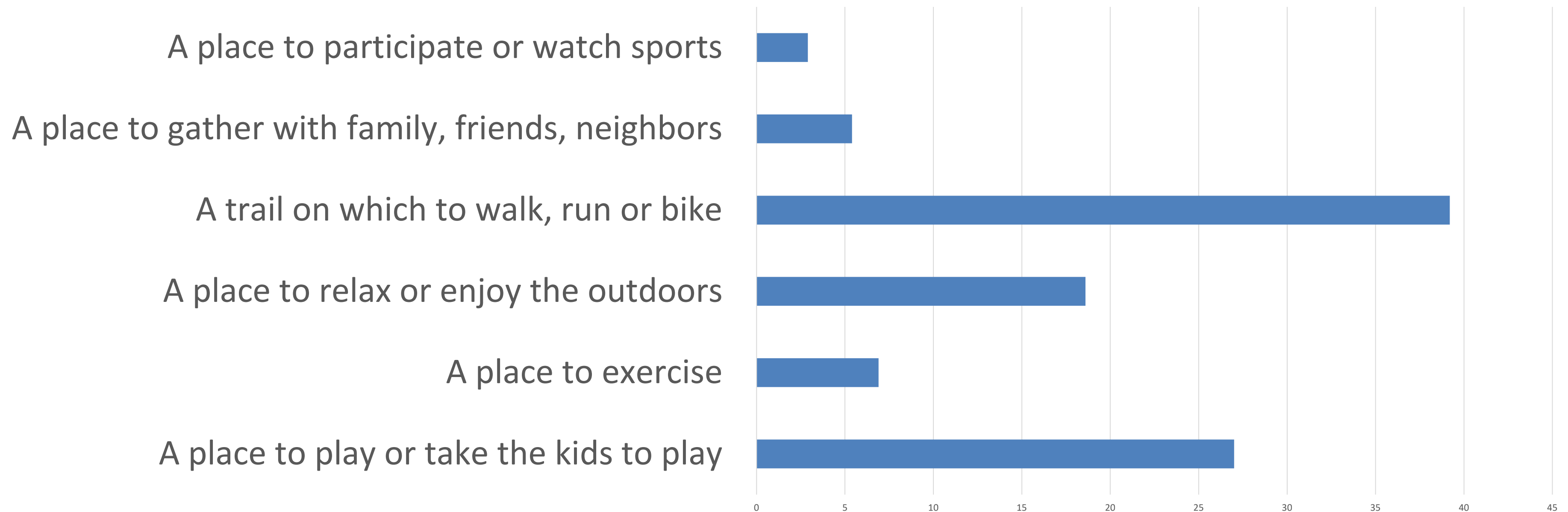
68% Rated parks excellent or good

Opportunities for Improvement

- Pool Renovations and Additions
- Pickleball Courts
- General Park Enhancements
- Northcliffe Area Concerns
- Inclusivity
- Maintenance
- Accessibility and Connectivity
- Environmental Considerations

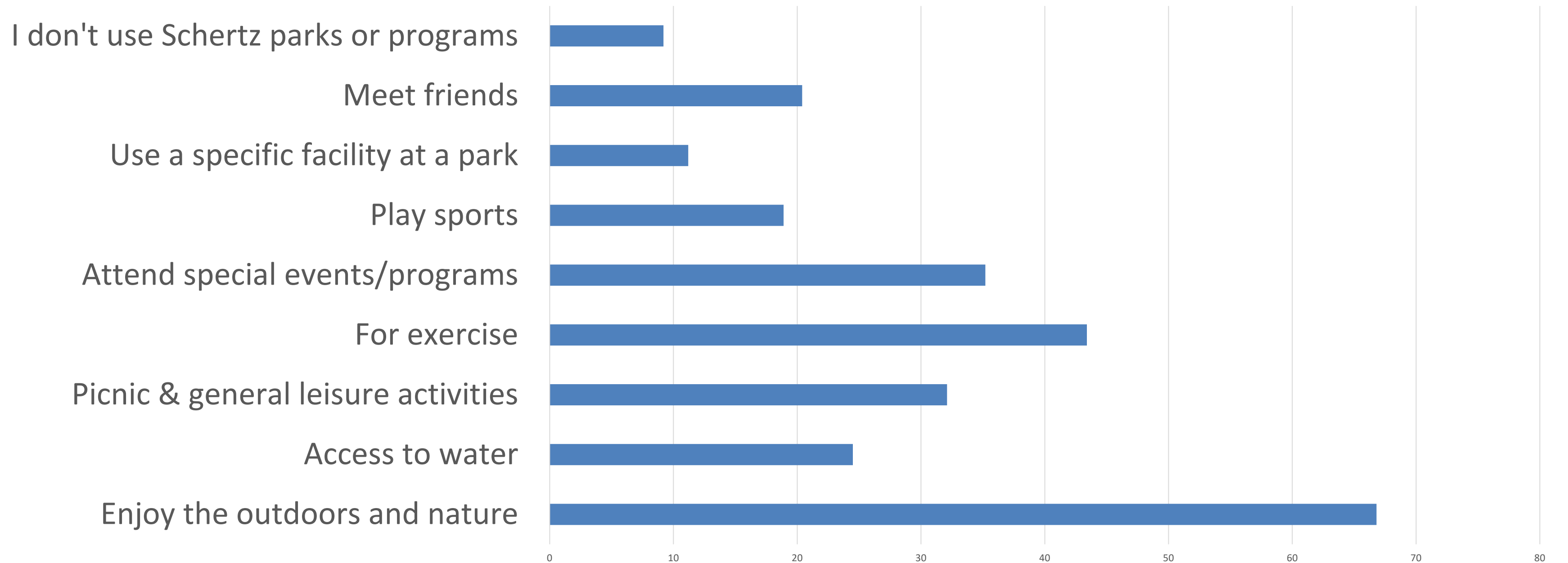
What We've Heard

MOST IMPORTANT THING TO HAVE CLOSE TO HOME



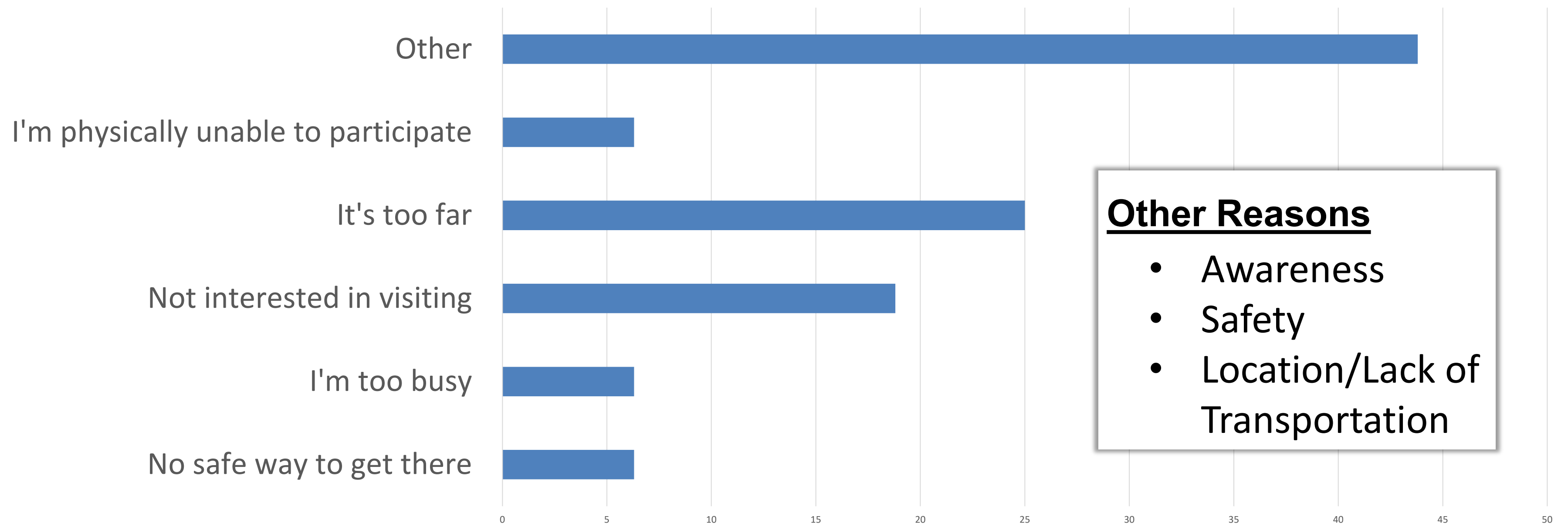
What We've Heard

MAIN REASONS YOU USE PARKS



What We've Heard

WHAT KEEPS YOU FROM USING PARKS



Other Reasons

- Awareness
- Safety
- Location/Lack of Transportation

What We've Heard

PROGRAM INTEREST BY AGE

None/not interested

Over 65

50 to 65

30 to 49

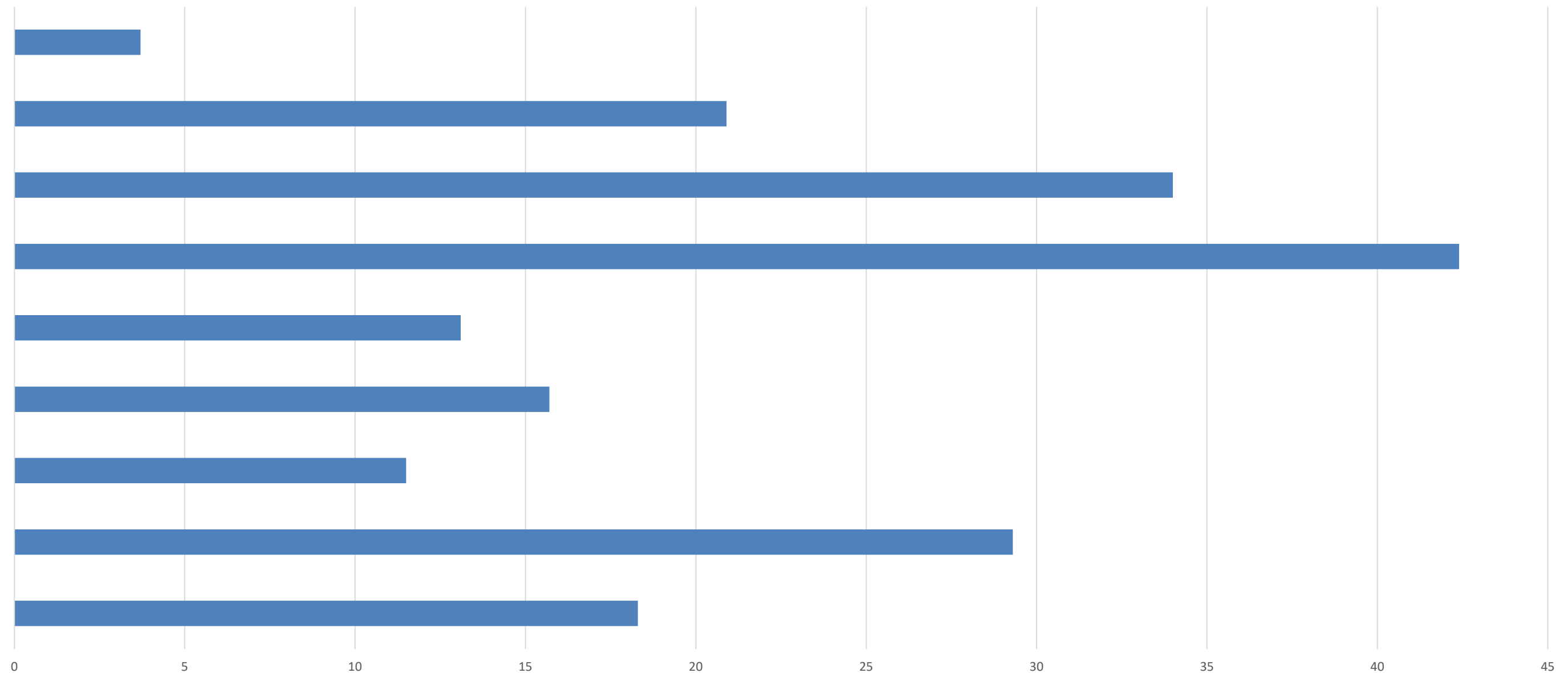
18 to 29

14 to 17

11 to 13

6 to 10

Under 5 years of age



City of Schertz

Discussion



Next Steps

- **Close the public survey – 8/2**
- **Assessment & Needs Draft –**
Mid-August
- **Recommendations Draft –**
Mid-September
- **Public Engagement & Next**
Parks Board Meeting – 9/23
- **Adoption Meetings – October**

Spread the
Word!!

www.SchertzParksPlan.com

