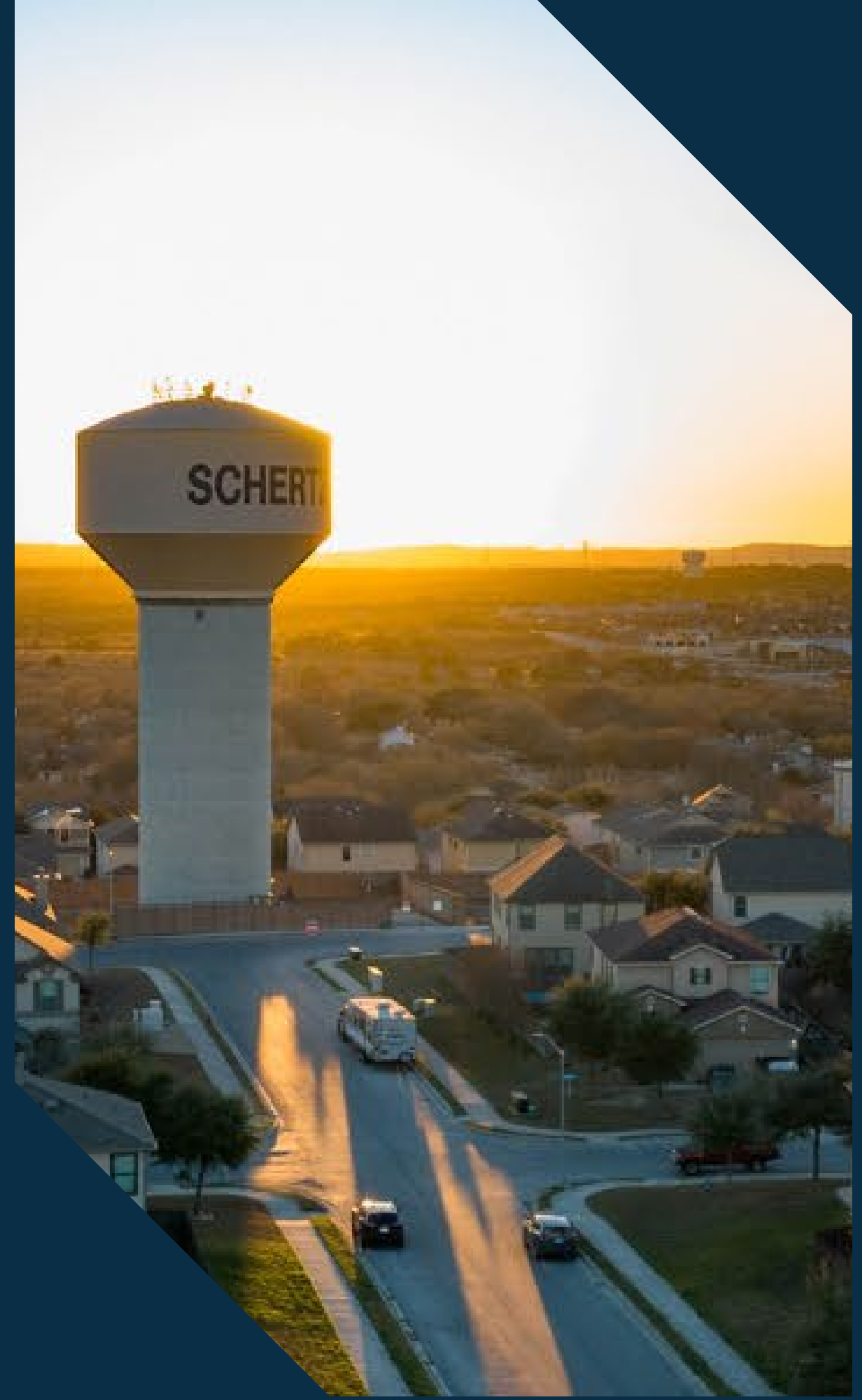


*City of Schertz | Comprehensive Plan*

# **Parks, Recreation and Open Space Master Plan**

*September 23, 2024*

Parks Board Briefing



# Meeting Agenda

**Inventory & Needs Assessment Review**

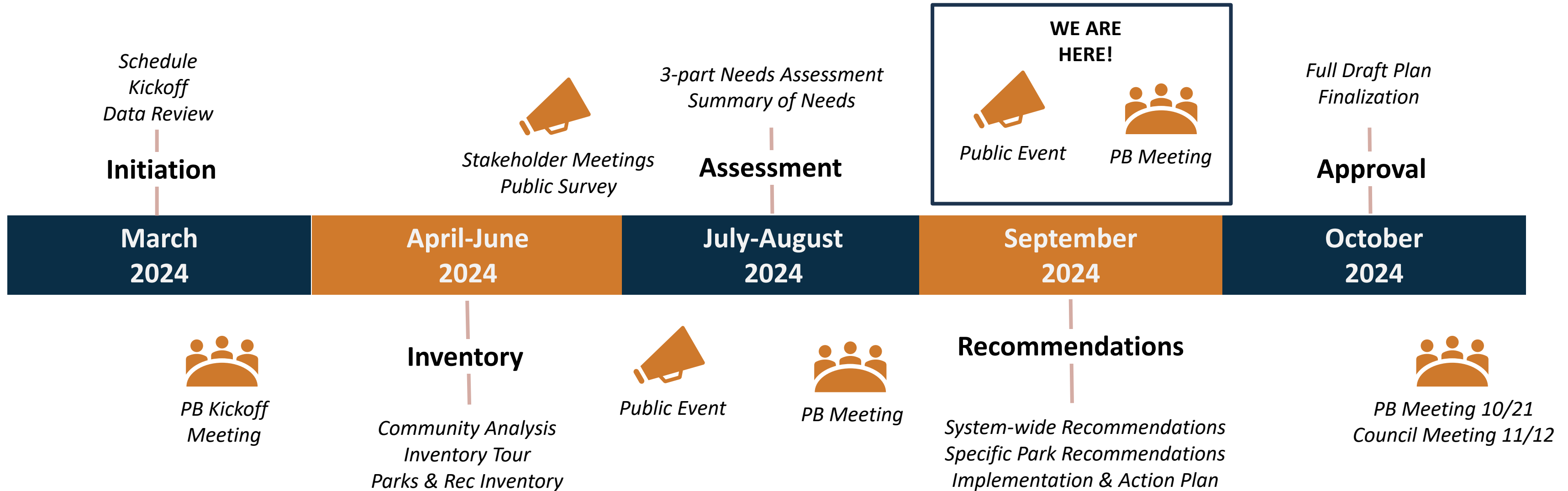
**Recommendations & Actions**

**Prioritization Exercise**

**Discussion**

# Project Timeline

March/April 2024  
COMP PLAN ADOPTION



*City of Schertz*

# Inventory Overview

---





# Profiles

1. Cibolo Creek String of Parks
2. Community Circle Park
3. Crescent Bend Nature Park
4. Cypress Point Park
5. Dry Comal Creek Nature Park
6. Heritage Oaks Park
7. Hilltop/Homestead Park
8. Live Oak Hills + Forest Ridge Park
9. North Center
10. Pickrell + Thulemeyer Park
11. Unnamed Graytown Valley Park
12. Unnamed Hallie's Cove Park
13. Unnamed Parklands Park

## Crescent Bend Nature Park

### Location and Access

Crescent Bend Nature Park (CBNP) is located along the Cibolo Creek and West Schaefer Road. The park attracts visitors from the surrounding region and is accessible by personal automobiles. Eventually the park is expected to be connected to the Cibolo Creek Trail network.

### Existing Conditions

CBNP is one of the few parks with a regional draw in the City and offers unique amenities such as birding and campsites (to be used for Scouting groups only) along with walking and biking trails, picnic tables, and educational signage. The park is also a Certified Firefly Habitat and is committed to the protection of fireflies from invasive species, light pollution and habitat degradation. In addition, the park sustains multiple habitats and diverse wildlife. It also hosts events such as educational walks and Star Party.

The Friends of Crescent Bend Nature Park is a volunteer group that works with the City to spearhead conservation efforts and ensure the provision of necessary amenities in the park. The group has been involved in developing strategies and recommendations for the future development of the park.

### Opportunities for Improvement

- Undertake initiatives to preserve the biodiversity of the park and restore habitat, such as invasive removal and soil health enhancing maintenance strategies.
- Provide fishing access along the northeast corner of the park. Identify locations for fishing piers.
- Develop a concept plan for constructing an education pavilion in the park.
- Improve pedestrian and bicycle access to the park through a connected trail systems and introduce additional educational programming for kids and young adults.
- Provide additional parking for visitors.
- Provide additional restrooms.
- Provide natural, exploratory children's play areas
- Provide outdoor classroom nodes along the trail network



Map 7. Crescent Bend Nature Park Location

### About the Park

Park Location	Park Size	Park Type
12805 Schaefer Road	180.7 Acres	Open Space

Park Features	
Walking and Biking Trails	Parking
Picnic Tables	Benches
Restrooms	Camp Site
Natural Areas, Habitat	Paved Trails
Birding Stations	
Water Access	



All the above photos show existing conditions in Crescent Bend Nature Park

*City of Schertz*

# Needs Assessment

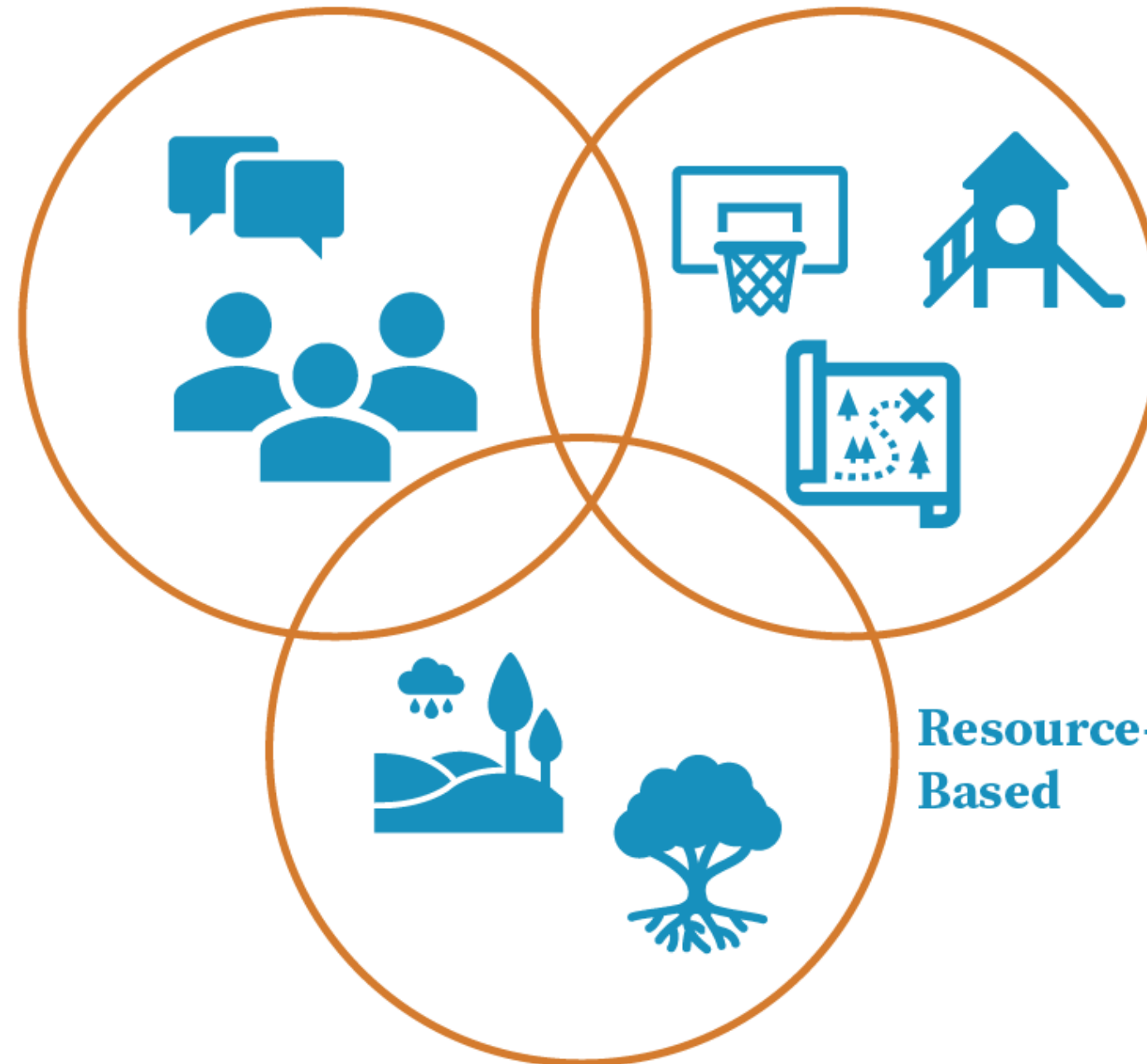
---



# 3-Part Needs Assessment

Analyzes and summarizes public feedback to identify what the community wants and expects from the parks and recreation system.

**Demand-Based**



**Standards-Based**

Analyzes parkland acreage, location and amenities in comparison with the location of the current population and future growth areas, based on industry standards.

**Resource-Based**

Evaluates existing physical, man-made and natural resources to identify opportunities to leverage for public recreation benefit.

# Demand Based Assessment

- Feedback Gathered During the Comprehensive Plan Update
- Stakeholder Focus Groups
- Community Parks Survey
- Online Mapping Comments
- Conversations with people at the 4th of July Jubilee community event

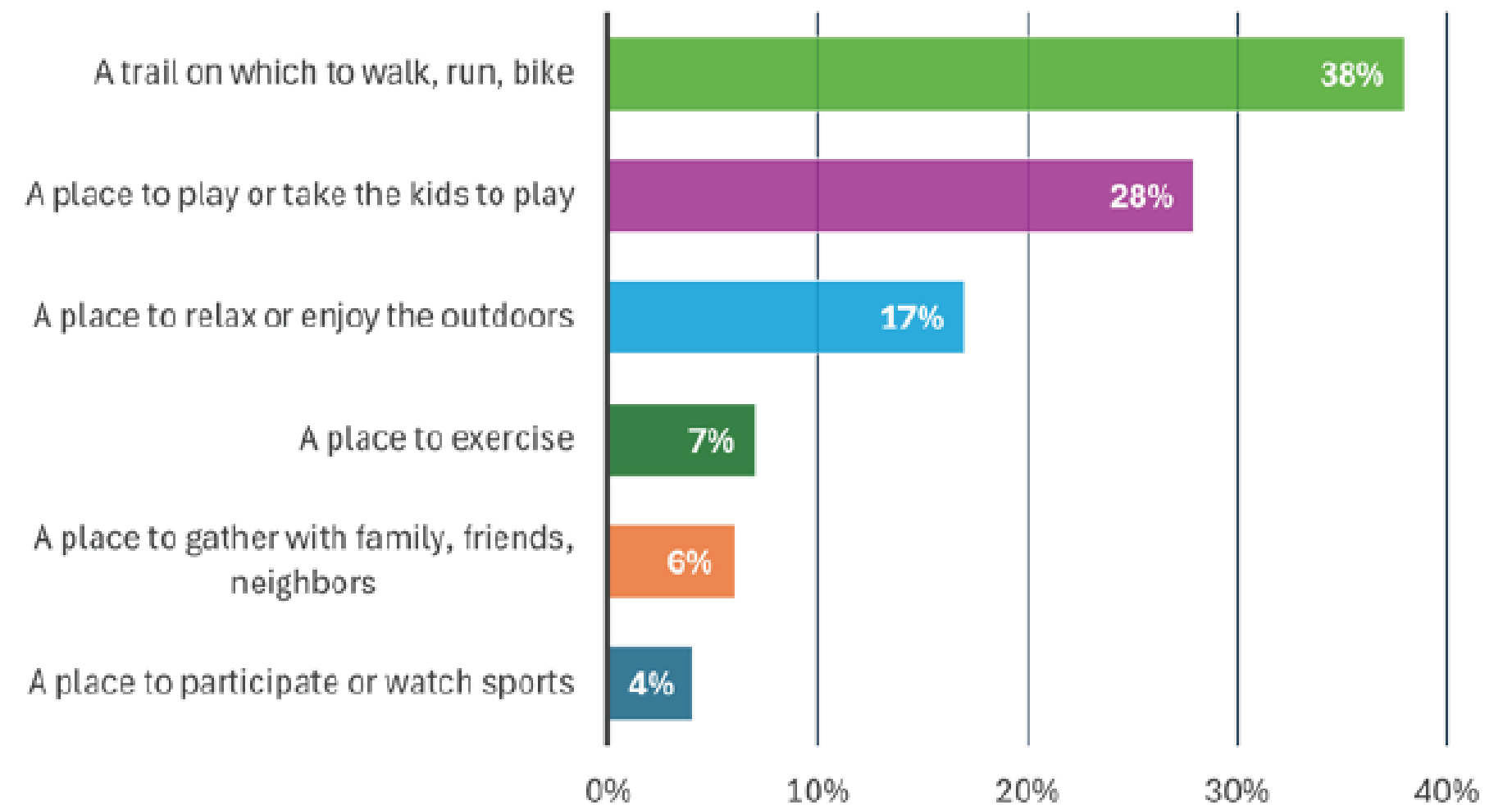


Figure 14. Respondents' priorities for close to home amenities.

# Standards Based Assessment

## Acreage Level of Service

The acreage level of service defines the quantity of parkland acreage as a ratio to population. The results are expressed as park acreage per 1,000 residents. The analysis examines whether there is sufficient parkland for residents today and in the future.

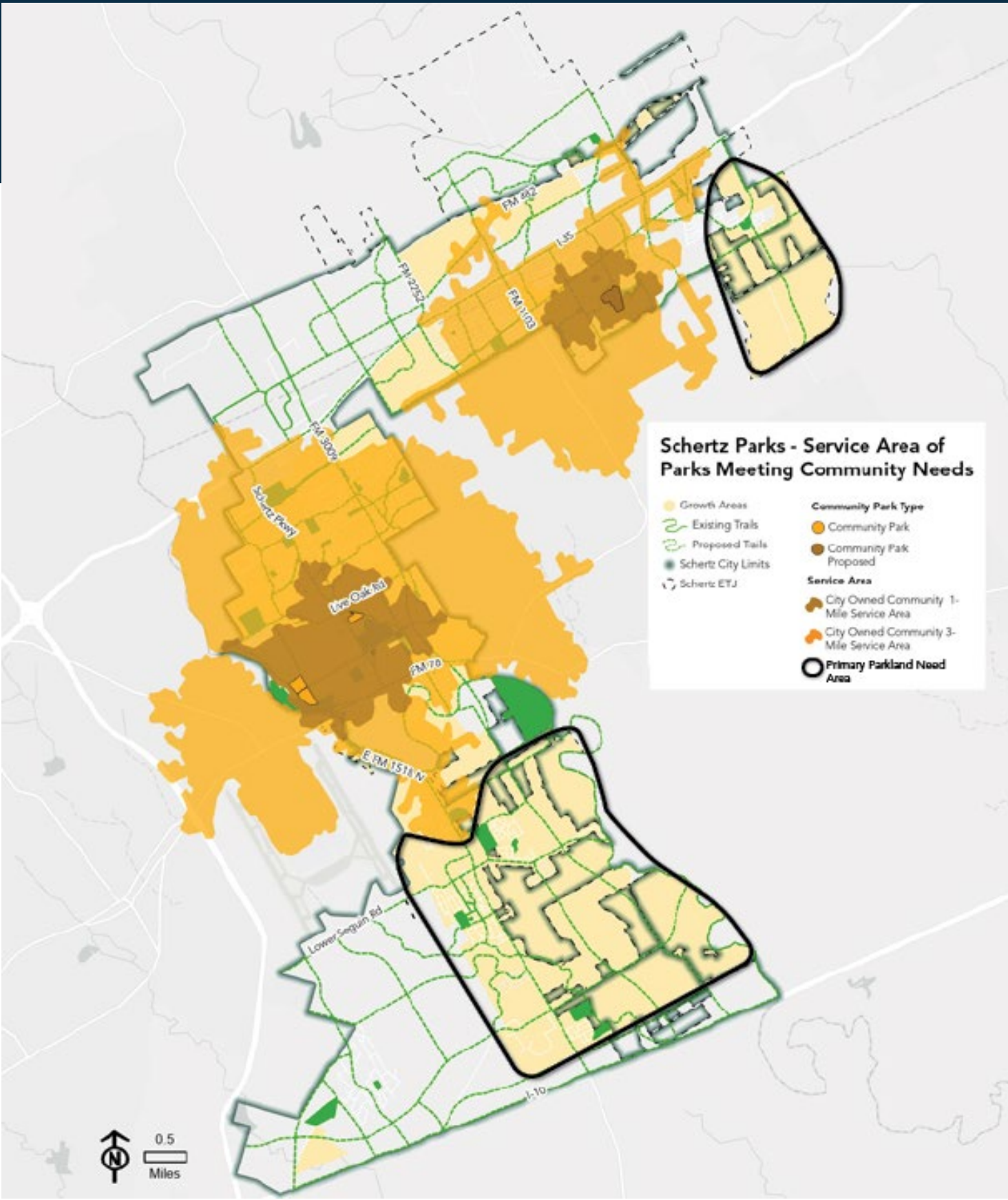
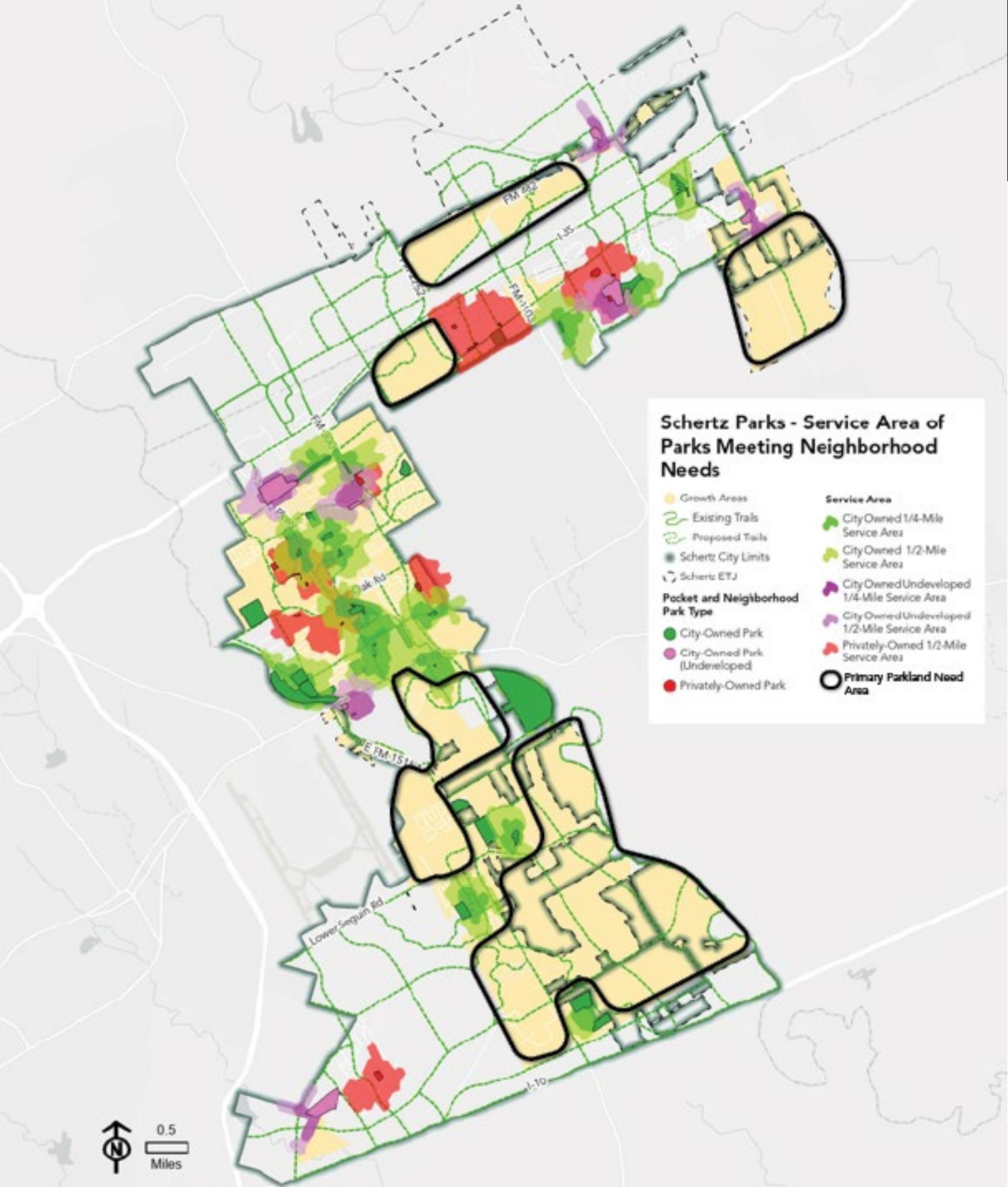
**Table 8. Parkland Acreage Level of Service**

Park Classification	Existing Level of Service (LOS)		Recommended Level of Service (2024)			Recommended Level of Service (2035)	
	Existing Acreage (2024)	Current LOS (based on 42,545 population*)	Recommended Target LOS (2024-2035)	2024 Recommended Acreage (based on 42,545 pop.*)	Surplus/Deficit Acreage (2024) ***	2035 Recommended Acreage (based on 56,302 pop.*)	Surplus/Deficit Acreage (2035) ***
<b>Close-to-home Parks (focused on benefit to nearby residents)**</b>							
Pocket Parks (City-owned)	7.4	0.17 Ac/1,000 Residents	0.25 Ac/1,000 Residents	10.6	-3.2	14.1	-6.7
Pocket Parks (City + HOA)	7.9	0.19 Ac/1,000 Residents			-2.7		-6.2
Neighborhood Parks (City-owned)	157.3	3.7 Ac/1,000 Residents	4.0 Ac/1,000 Residents	170.2	-12.9	225.2	-67.9
Neighborhood Parks (City + HOA)	186.7	4.4 Ac/1,000 Residents			16.5		-38.5
Community Parks (City-owned)	71.1	1.7 Ac/1,000 Residents	5.0 Ac/1,000 Residents	212.7	-141.6	281.5	-210.4
Community Parks (City + HOA)	71.1	1.7 Ac/1,000 Residents			-141.6		-210.4
Close-to-Home Parks Subtotal (City-owned)	235.8	5.5 Ac/1,000 Residents	9.25 Ac/1,000 Residents	393.5	-157.7	520.8	-285.0
Close-to-Home Parks Subtotal (City + HOA)	265.7	6.2 Ac/1,000 Residents			-127.8		-255.1
<b>Other Parks Types** (All City-owned)</b>							
Regional Parks	231.6	5.4 Ac/1,000 Residents	4.0 Ac/1,000 Residents	170.2	61.4	225.2	6.4
Linear Parks/Greenways	60.8	1.4 Ac/1,000 Residents	Varies	N/A	N/A	N/A	N/A
Open Space/Nature Park	67.9	1.6 Ac/1,000 Residents	Varies	N/A	N/A	N/A	N/A
Special Purpose Parks	13.4	0.3 Ac/1,000 Residents	Varies	N/A	N/A	N/A	N/A
Other Parks Subtotal	373.7	8.8 Ac/1,000 Residents	Varies	N/A	N/A	N/A	N/A
<b>All Park Types (City-owned)</b>	<b>609.5</b>	<b>14.3 Ac/1,000 Residents</b>	<b>13.25 Ac/1,000 Residents</b>	<b>563.7</b>	<b>45.8</b>	<b>746.0</b>	<b>-136.5</b>
<b>All Park Types (all facilities)</b>	<b>639.4</b>	<b>15.0 Ac/1,000 Residents</b>			<b>75.7</b>		<b>-106.6</b>

# Standards Based Assessment - Parks

## Spatial Level of Service - Parks

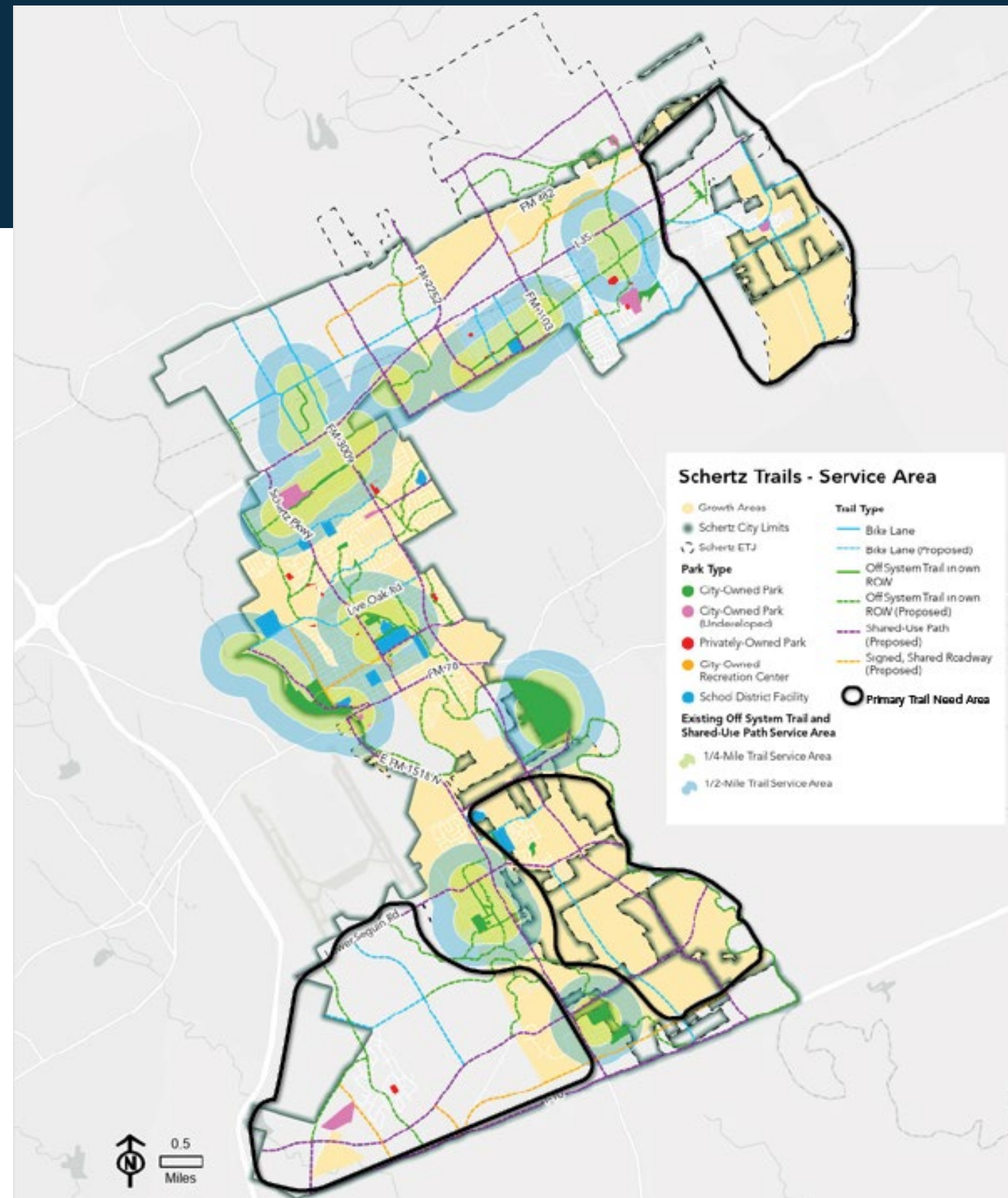
The spatial level of service looks at the location and distribution of different park types to identify underserved areas and where new parks may be needed.



# Standards Based Assessment - Trails

## Spatial Level of Service – Trails

A level of service assessment was created for trails by placing a ¼ mile and ½ mile buffer around existing shared-use paths and off-system trails. Existing bike lanes and shared roadways were not used to calculate buffers, nor were any proposed trails.



# Standards Based Assessment

## Facility Level of Service

The spatial level of service looks at the location and distribution of different park types to identify underserved areas and where new parks may be needed.

Table 9. Facility Level of Service

	Facility/Amenity	Current Available <sup>^</sup>	Current LOS (1 Facility per # Residents)			Target LOS (Per Residents)	2024 Need (based on 42,545 pop.*)	2024 Deficit or Surplus ***	2035 Need (based on 56,302 pop.*)	2035 Deficit or Surplus ***	2024 NRPA Agency Review (some facility categories are not included in the Agency Review)	
											Cities 20,000-49,999	Cities 50,000-99,999
Active	Baseball/Softball Fields	12	3,545			1 per 3,500	13	-1	17	-5	Diamond fields 1 per 3,007	Diamond fields 1 per 3,675
	Backstop	5	8,509			1 per 6,000	8	-3	10	-5		
	Basketball Courts	0	0			1 per 8,000	6	-6	8	-8	1 per 7,501	1 per 8,363
	Pickleball Court	0	0			1 per 8,000	6	-6	8	-8	1 per 7,737	1 per 10,500
	Multipurpose Court (basketball, pickleball)	7	6,078			1 per 8,000	6	1	8	-1	1 per 13,000	1 per 12,972
	Disc Golf	0	0			1 per city	1	-1	1	-1	1 per 29,445	1 per 58,603
	Fitness Equipment Circuit	0	0			1 per 30,000	2	-2	2	-2	1 per 27,262	1 per 35,000
	Skate Park	1	42,545			1 per city	1	0	1	0	1 per 33,167	1 per 60,904
	Multipurpose Field**	8	5,318			1 per 4,000	11	-3	15	-7	Rectangular fields 1 per 3,333	Rectangular fields 1 per 4,070
	Soccer Fields	15	2,836			1 per 3,500	13	2	17	-2	1 per 5,461	1 per 5,865
	Tennis Courts	0	0			1 per 13,000	4	-4	5	-5	1 per 14,280	1 per 26,612
	Volleyball Courts (Outdoor)	0	0			1 per 15,000	3	-3	4	-4		
Trails (miles)	20	2,127			1 per 2,000	21.3	-1.3	29	-9.0	Median 10 total miles	Median 18.1 total miles	
Passive	Amphitheater/Outdoor Event Space	2	21,273			1 per 15,000	3	-1	4	-2		
	Dog Park	1	42,545			1 per 30,000	2	-1	2	-1	1 per 27,508	1 per 55,135
	Picnic Shelters/Pavilions	10	4,255			1 per 3,000	15	-5	19	-9		
	Picnic Facilities (e.g., public parks with picnic tables)	14	3,039			In all publicly accessed parks	In all publicly accessed parks	-26	In all publicly accessed parks	-26		
	Playscape Units	39	1,091			1 per 1,200	36	3	47	-8	Playground 1 per 3,105	Playground 1 per 3,707
Water	Fishing Piers	1	42,545			1 per 15,000	3	-2	4	-3		
	Outdoor Aquatic Facility	1	42,545			1 per 25,000	2	-1	3	-2	Pool: 1 per 27,081 Water park: 1 per 32,812	Pool: 1 per 46,363 Water park: 1 per 76,780
	Indoor Aquatic Facility	1	42,545			1 per city	1	0	1	0	1 per 31,000	1 per 60,824
	Splash Pad	2	21,273			1 per 6,000	8	-6	10	-8	1 per 30,629	1 per 54,100
Misc.	Recreation Center	1	42,545			1 per 30,000	2	-1	2	-1	1 per 24,486	1 per 39,886
	Other Quality of Life Facilities ^^	6	7,091			Where feasible	Where feasible	Varies	Where feasible	Varies		
	Restrooms/Portable (in parks)	9	4,727			Where feasible	Where feasible	Varies	Where feasible	Varies		

# Resource Based Assessment

- Creeks and Greenbelts
- Topography
- Utility Corridors



Oak Ridge Park



Hilltop Park



Dry Comal Creek Park

# Summary of Needs



## Parkland Acreage and Development

- Enhanced maintenance and upgrades for older parks and equipment.
- Account for additional close-to-home parks, especially in future residential areas.
- Distribution of services among the City's three distinct geographies: north, central and south.
- Balancing needs and amenities for all ages and abilities.
- More sustainable parks maintenance practices.
- Beautification and shade enhancements at existing parks.



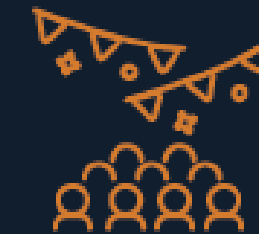
## Park Facilities

- Trails
- Natural areas
- Water access
- Lighted, competition-level sports fields
- Baseball/softball practice fields
- Pickleball
- Splash pads
- Basketball courts
- Fitness equipment
- Amphitheater
- Picnic facilities & pavilions



## Parkland Access and Connectivity

- A trail network that connects major park spaces.
- More loop trails for exercise.
- Safer and more complete sidewalk network throughout the City.
- Regional trails connecting Schertz to neighboring cities as well as the wider Central Texas region.



## Recreational Programs

- Public education campaigns related to local ecology and natural systems.
- Farmers market
- Art/music/food festivals
- Community gardens
- Teen programming
- Adult programming
- Indoor gymnasium + eSports

*City of Schertz*

# Recommendations

---



# Top Priority Needs

Table 10. Top Priority Facility Needs

New facilities needed based on community input	New facilities needed based on level of service	Upgraded facilities needed based on existing condition
<ol style="list-style-type: none"> <li>1. Trails and linear parks</li> <li>2. Places to relax and enjoy nature</li> <li>3. Shaded playgrounds</li> <li>4. Water access, including fishing and kayaking</li> <li>5. Fitness equipment</li> <li>6. Sports facilities</li> <li>7. Splash pads</li> </ol>	<ol style="list-style-type: none"> <li>1. Picnic facilities, shelters and pavilions</li> <li>2. Baseball/softball Fields</li> <li>3. Trails</li> <li>4. Basketball court</li> <li>5. Pickleball court</li> <li>6. Playscapes</li> <li>7. Splash pads</li> </ol>	<ol style="list-style-type: none"> <li>1. Shade, generally</li> <li>2. Improved pool</li> <li>3. Upgraded play equipment</li> <li>4. Enhanced maintenance and beautification</li> <li>5. Improved accessibility, generally</li> <li>6. Improved softball/baseball fields</li> </ol>
Top cumulative outdoor facility needs		Top cumulative indoor facility needs
<ol style="list-style-type: none"> <li>1. Trails, especially nature trails</li> <li>2. Access to nature and natural waterbodies</li> <li>3. Improved playground equipment/inclusive playgrounds</li> <li>4. Picnic facilities, shelters and pavilions</li> <li>5. Splash pads and pools</li> <li>6. Events pavilion and amphitheatre</li> <li>7. Baseball/softball fields</li> <li>8. Sports courts (basketball/pickleball)</li> <li>9. Community gardens</li> <li>10. Fitness equipment</li> </ol>		<ol style="list-style-type: none"> <li>1. Indoor multipurpose gym (basketball/volleyball)</li> <li>2. Indoor fitness</li> <li>3. Recreation/community center with programming and services</li> <li>4. Library services</li> <li>5. Office/admin space and storage for sports leagues</li> <li>6. Commercial kitchen spaces</li> </ol>

# Parks Goals



Goal 1: The City will proactively acquire parkland and open space acreage to provide physical access to all existing and future residents of Schertz.



Goal 2: The City will update existing parks and improve undeveloped parkland to accommodate the changing needs of the communities.



Goal 3: The City will implement system-wide improvements that enhance access, usability, and aesthetics of existing and future parks.



Goal 4: The City will provide recreational facilities and programs that enhance the quality of life and accessibility of services for Schertz residents.



Goal 5: The City will maintain parks in a way that promotes full utilization of park spaces and aligns with community values.



Goal 6: The City will pursue/continue partnerships and seek diverse funding strategies to support the expansion of parks and recreational options.

# **GOAL #1: The City will proactively acquire parkland and open space acreage to provide physical access to all existing and future residents of Schertz.**

- ***Action 1.1: Proactively pursue the acquisition of additional parkland acreage in the target areas.***
- ***Action 1.2: Proactively pursue the acquisition of additional parkland acreage along Cibolo Creek.***
- ***Action 1.3: Update the Parkland Dedication Ordinance.***
- ***Action 1.4: Keep the PROST plan updated.***
- ***Action 1.5: Keep parks data and GIS layers updated between plan updates so there is sufficient and up-to-date information available for subsequent updates.***

# GOAL #2: The City will update existing parks and improve undeveloped parkland to accommodate the changing needs of the communities.

- **Action 2.1:** Implement a continuous walking trail along Cibolo Creek.
- **Action 2.2:** Provide appropriate amenities at small park locations along Cibolo Creek to support the “String of Parks” vision.
- **Action 2.3:** Implement a paddle trail along Cibolo Creek.
- **Action 2.4:** Identify locations for an amphitheater.
- **Action 2.5:** Improve Community Circle Park.
- **Action 2.6:** Expand the Dietz Creek Trail.
- **Action 2.7:** Develop a Master Plan for Crescent Bend Nature Park.
- **Action 2.8:** Improve Cypress Point Park.
- **Action 2.9:** Enhance Dry Comal Creek Nature Park
- **Action 2.10:** Promote the creation of a cultural district near Dry Comal Creek Nature Park.
- **Action 2.11:** Improve Heritage Oaks Park.
- **Action 2.12:** Enhance Hilltop/Homestead Park.
- **Action 2.13:** Enhance Live Oak Hills Park & Forest Ridge Park.
- **Action 2.14:** Enhance the North Center.
- **Action 2.15:** Improve Pickrell Park & Thulemeyer Park.
- **Action 2.16:** Enhance the Unnamed Future Park (in Parklands Neighborhood)
- **Action 2.17:** Enhance the Unnamed Future Park (in Hallie’s Cove Neighborhood)
- **Action 2.18:** Enhance the Unnamed Future Park (in Graytown Valley Neighborhood)

# **GOAL #3: The City will implement system-wide improvements that enhance access, usability, and aesthetics of existing and future parks.**

- *Action 3.1: Implement the City-wide Trails Plan.*
- *Action 3.2: Conduct an ADA Assessment.*
- *Action 3.3: Improve park beautification efforts.*
- *Action 3.4: Increase shade within parks.*
- *Action 3.5: Develop a photography policy for public parks.*
- *Action 3.6: Update and provide additional lighting at sports fields throughout the City.*
- *Action 3.7: Offer free Wi-Fi at all neighborhood and community parks.*
- *Action 3.8: Develop Park Design Guidelines.*

# **GOAL #4: The City will provide recreational facilities and programs that enhance the quality of life and accessibility of services for Schertz residents.**

- ***Action 4.1: Provide suitable facilities in each of the three geographical regions of Schertz (North, Central and South).***
- ***Action 4.2: Work to address facility deficiencies as the City continues to develop the park system.***
- ***Action 4.3: Evaluate opportunities to provide a city-wide market pavilion and festival plaza.***
- ***Action 4.4: Identify locations for additional competition-level sports fields.***
- ***Action 4.5: Create a community garden program.***
- ***Action 4.6: Enhance recreational programming.***

# **GOAL #5: The City will maintain parks in a way that promotes full utilization of park spaces and aligns with community values.**

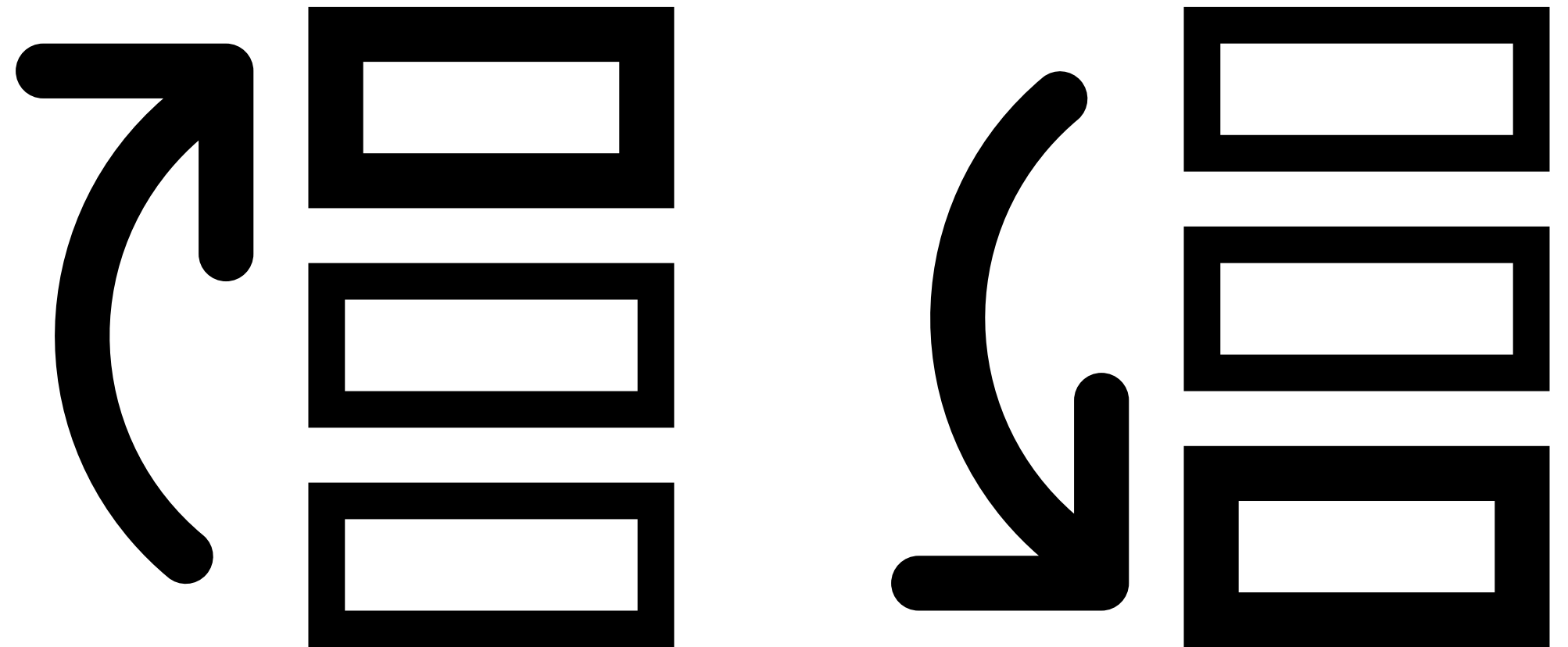
- *Action 5.1: Conduct a staffing assessment.*
- *Action 5.2: Ensure adequate funding and staffing accompany park system expansions and increased expectations of residents.*
- *Action 5.3: Develop a proactive maintenance plan that prioritizes maintaining safety, accessibility, and aesthetics.*
- *Action 5.4: Create Ecological Restoration and Maintenance Plans (ERMPS) for appropriate parks.*
- *Action 5.5: Adopt sustainable maintenance practices for all park maintenance work.*
- *Action 5.6: Develop a Parks & Recreation Asset Resilience Plan*

# **GOAL #6: The City will pursue/continue partnerships and seek diverse funding strategies to support the expansion of parks and recreational options.**

- ***Action 6.1: Organizations that run recreational facilities, programs and sports leagues, including YMCA, BVYA, and SYSA***
- ***Action 6.2: Additional community support groups, like Friends of Crescent Bend***
- ***Action 6.3: Great Springs Project***
- ***Action 6.4: Historical Society***
- ***Action 6.5: VFW or similar groups that organize regular recreational tournaments***
- ***Action 6.6: Adjacent jurisdictions***
- ***Action 6.7: Work with SCUCISD for expanded joint-use of playgrounds, practice facilities and indoor gymnasiums during non-school hours and on weekends.***

# Prioritization Exercise

- Break up into small group or pairs
- Each group takes one or two goals and prioritizes the actions within that goal
- We will come back and discuss as a group



*City of Schertz*

# Discussion

---



# Next Steps

- **Adoption Meetings**

*Parks Board Meeting - Oct 21*

*Council Meeting – Nov 12*

[www.SchertzParksPlan.com](http://www.SchertzParksPlan.com)

