

# City of Schertz

## 2024 Annexations

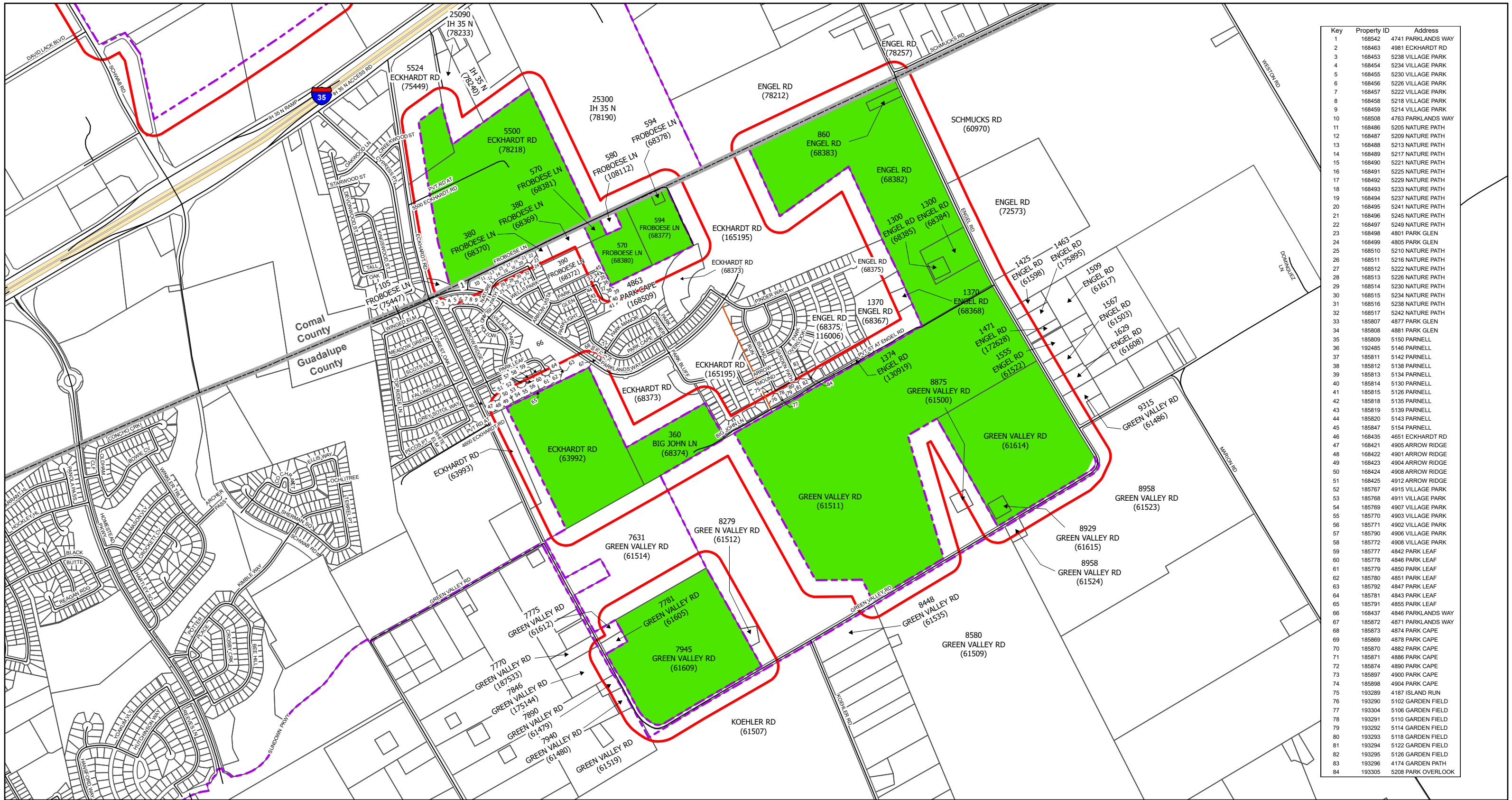
### Comal County

### North of IH 35 N

○ 200' Buffer  
 虚线 Municipal Boundary

▭ Parcels  
 绿色 Annexation Parcels





Key	Property ID	Address
1	168542	4741 PARKLANDS WAY
2	168463	4981 ECKHARDT RD
3	168453	5238 VILLAGE PARK
4	168454	5234 VILLAGE PARK
5	168455	5230 VILLAGE PARK
6	168456	5226 VILLAGE PARK
7	168457	5222 VILLAGE PARK
8	168458	5218 VILLAGE PARK
9	168459	5214 VILLAGE PARK
10	168508	4763 PARKLANDS WAY
11	168486	5205 NATURE PATH
12	168487	5209 NATURE PATH
13	168488	5213 NATURE PATH
14	168489	5217 NATURE PATH
15	168490	5221 NATURE PATH
16	168491	5225 NATURE PATH
17	168492	5229 NATURE PATH
18	168493	5233 NATURE PATH
19	168494	5237 NATURE PATH
20	168495	5241 NATURE PATH
21	168496	5245 NATURE PATH
22	168497	5249 NATURE PATH
23	168498	4801 PARK GLEN
24	168499	4805 PARK GLEN
25	168510	5210 NATURE PATH
26	168511	5216 NATURE PATH
27	168512	5222 NATURE PATH
28	168513	5226 NATURE PATH
29	168514	5230 NATURE PATH
30	168515	5234 NATURE PATH
31	168516	5238 NATURE PATH
32	168517	5242 NATURE PATH
33	185807	4877 PARK GLEN
34	185808	4881 PARK GLEN
35	185809	5150 PARNELL
36	192485	5146 PARNELL
37	185811	5142 PARNELL
38	185812	5138 PARNELL
39	185813	5134 PARNELL
40	185814	5130 PARNELL
41	185815	5126 PARNELL
42	185818	5135 PARNELL
43	185819	5139 PARNELL
44	185820	5143 PARNELL
45	185847	5154 PARNELL
46	168435	4651 ECKHARDT RD
47	168421	4905 ARROW RIDGE
48	168422	4901 ARROW RIDGE
49	168423	4904 ARROW RIDGE
50	168424	4908 ARROW RIDGE
51	168425	4912 ARROW RIDGE
52	185767	4915 VILLAGE PARK
53	185768	4911 VILLAGE PARK
54	185769	4907 VILLAGE PARK
55	185770	4903 VILLAGE PARK
56	185771	4902 VILLAGE PARK
57	185790	4906 VILLAGE PARK
58	185772	4908 VILLAGE PARK
59	185777	4842 PARK LEAF
60	185778	4846 PARK LEAF
61	185779	4850 PARK LEAF
62	185780	4851 PARK LEAF
63	185792	4847 PARK LEAF
64	185781	4843 PARK LEAF
65	185791	4855 PARK LEAF
66	168437	4846 PARKLANDS WAY
67	185872	4871 PARKLANDS WAY
68	185873	4874 PARK CAPE
69	185869	4878 PARK CAPE
70	185870	4882 PARK CAPE
71	185871	4886 PARK CAPE
72	185874	4890 PARK CAPE
73	185897	4900 PARK CAPE
74	185898	4904 PARK CAPE
75	193289	4187 ISLAND RUN
76	193290	5102 GARDEN FIELD
77	193304	5106 GARDEN FIELD
78	193291	5110 GARDEN FIELD
79	193292	5114 GARDEN FIELD
80	193293	5118 GARDEN FIELD
81	193294	5122 GARDEN FIELD
82	193295	5126 GARDEN FIELD
83	193296	4174 GARDEN PATH
84	193305	5208 PARK OVERLOOK



Last update: April 3, 2024

City of Schertz, GIS Specialist: Bill Gardner, bgardner@schertz.com (210) 619-1185

\*The City of Schertz provides this Geographic Information System product "as is" without any express or implied warranty of any kind including but not limited to the implied warranties of merchantability and fitness for a particular purpose. In no event shall The City of Schertz be liable for any special, indirect, or consequential damages or any damages whatsoever arising out of or in connection with the use of or performance of these materials. Information published in this product could include technical inaccuracies or typographical errors. Periodical changes may be added to the information herein. The City of Schertz may

# City of Schertz

## 2024 Annexations

### Guadalupe County & Comal County South of IH 35 N

- 200' Buffer
- Municipal Boundary

- Parcels
- Annexation Parcels

