

\\kimley-horn.com\ISO\_ALP\ALP\_PR\1000\_THD\_New Retail Stores\Sites\Schertz\_TX\CAD\Exhibits\THD\_SCHERTZ\_TX - SITE LOCATION EXHIBIT.dwg OVERALL Jun 12, 2025 9:51am by: Josemaria Espinoza



**Kimley >> Horn**  
 11720 AMBER PARK DRIVE, SUITE 600, ALPHARETTA, GEORGIA 30009  
 PHONE: (770) 619-4280 | www.kimley-horn.com

TITLE:  
**HD PROJECT LOCATION EXHIBIT**

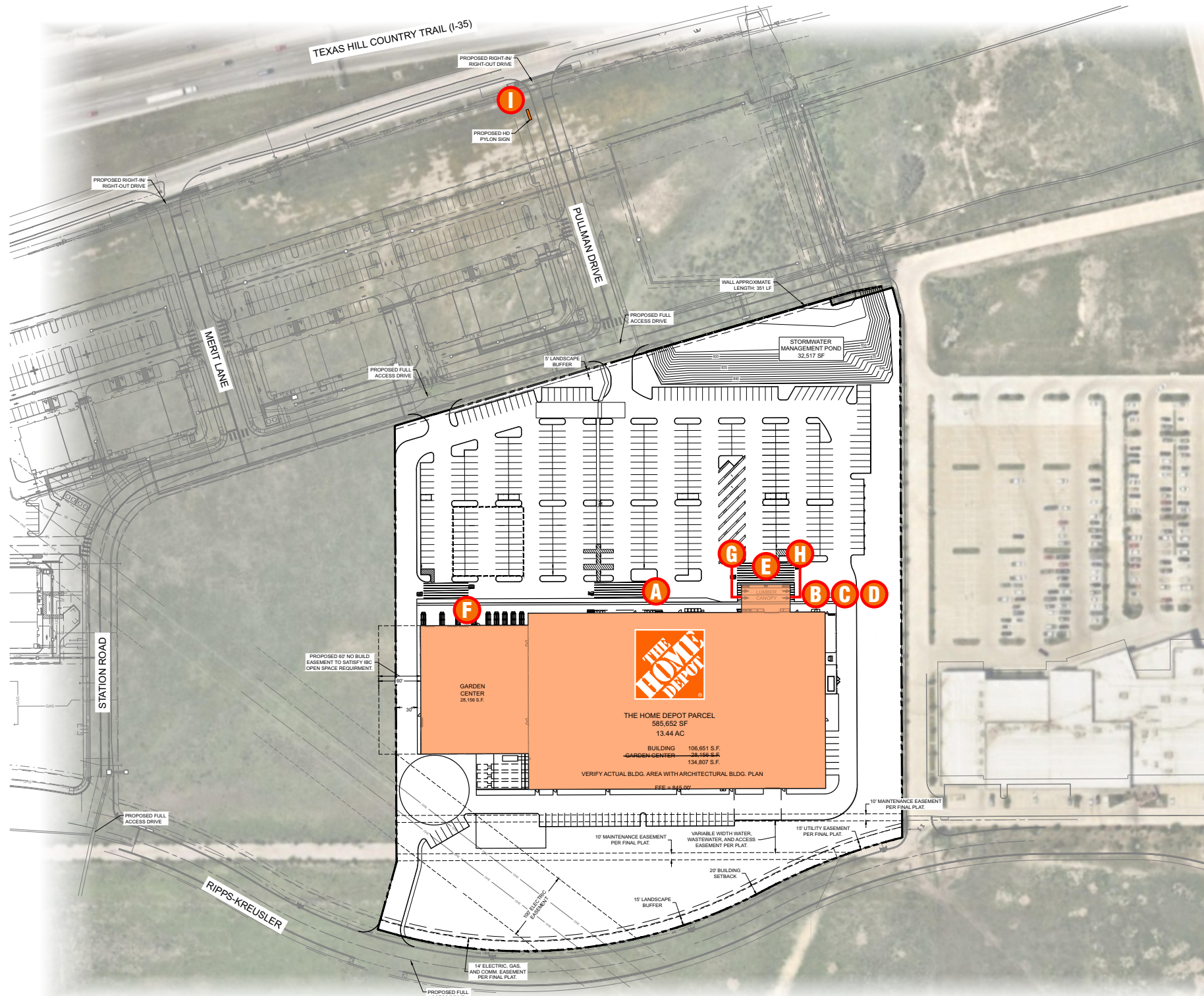
PROJECT:  
**THD SCHERTZ, TX**

CLIENT:  
**THE HOME DEPOT**

JOB NUMBER: SS-02906.2001  
 SCALE: 1" = 150'  
 DATE: 06/12/2025  
 SHEET: **EXHIBIT A**

THIS DOCUMENT, TOGETHER WITH THE CONCEPTS AND DESIGNS PRESENTED HEREIN, AS AN INSTRUMENT OF SERVICE, IS INTENDED ONLY FOR THE SPECIFIC PURPOSE AND CLIENT FOR WHICH IT WAS PREPARED. REUSE OF AND IMPROPER RELIANCE ON THIS DOCUMENT WITHOUT WRITTEN AUTHORIZATION AND ADAPTATION BY KIMLEY-HORN AND ASSOCIATES, INC. SHALL BE WITHOUT LIABILITY TO KIMLEY-HORN AND ASSOCIATES, INC. COPYRIGHT KIMLEY-HORN AND ASSOCIATES, INC. 2017

# I-35 & Cibolo Valley Road - Schertz, Texas 78108



## NEW THD SIGNS

- A** 6'- 0" THE HOME DEPOT LED CHANNEL LETTERS
- B** 3'- 0" TOOL RENTAL LED SIGN
- C** 12" X 12" NEW TOOL RENTAL STORE HOUR SIGN
- D** 12" X 12" NEW TOOL RENTAL ENTRANCE SIGN
- E** 2'- 6" LUMBER LED CHANNEL LETTERS
- F** 2'- 6" GARDEN CENTER LED CHANNEL LETTERS
- G** ENTRANCE CLEARANCE PANEL (NON-ILLUMINATED)
- H** EXIT CLEARANCE PANEL (NON-ILLUMINATED)
- I** 8'-0" X 8'-0" THD MONUMENT @ 20' OAH (96 SF)



1771 Industrial Road, Dothan, Alabama 36303  
 (888) 303-5534 (334) 836-1401  
 www.idassociatesinc.com



CLIENT: THE HOME DEPOT

LOCATION: SCHERTZ, TEXAS

ACCOUNT REP: KEVIN CRAMER

DRAWING NO: THD-SCHERTZ\_TX #TBD-SIGN EXHIBIT

STORE NO: TBD

DATE: 06/10/25

DRAWN BY: JAS

REV:

REV:

REV:

REV:

REV:

REV:

REV:

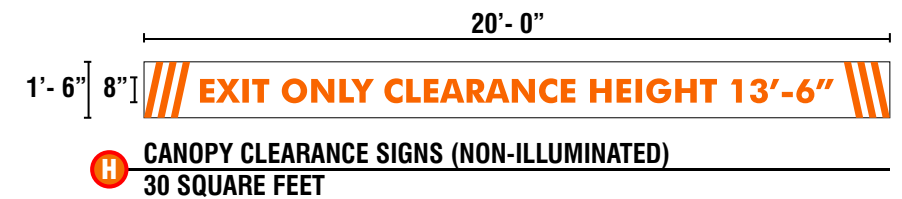
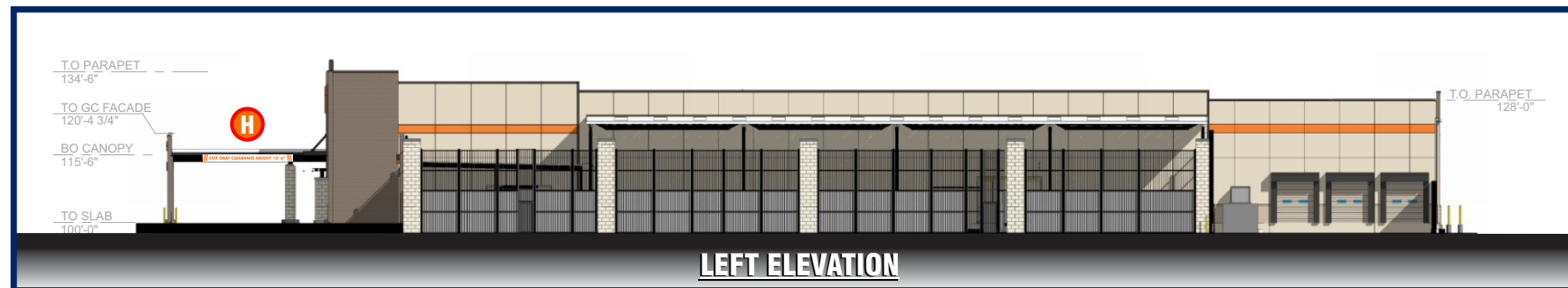
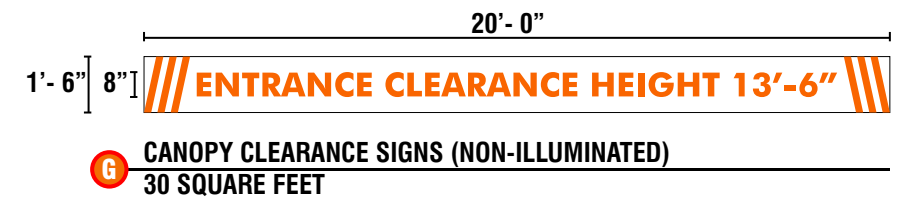
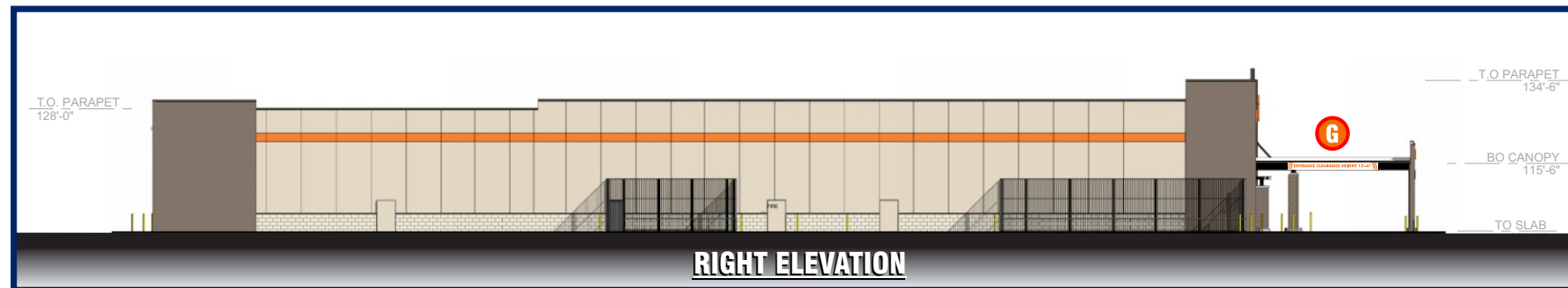
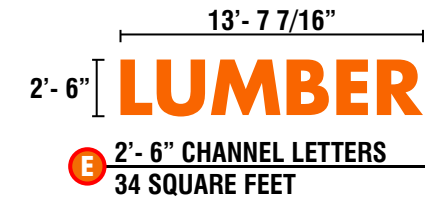
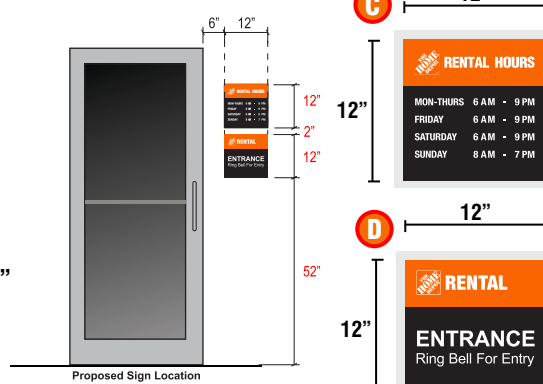
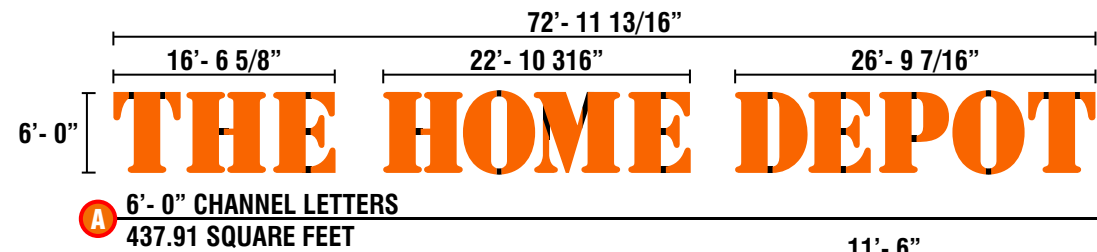
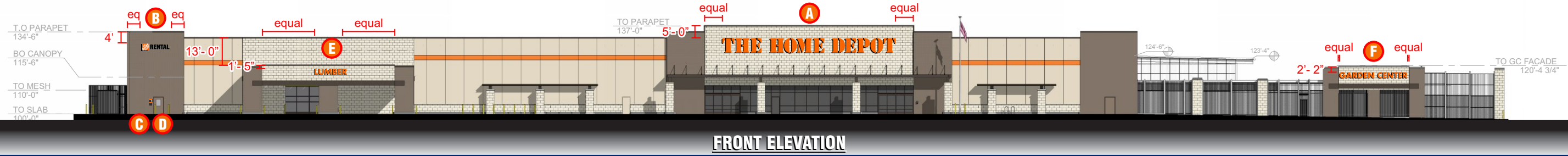
REV:

REV:

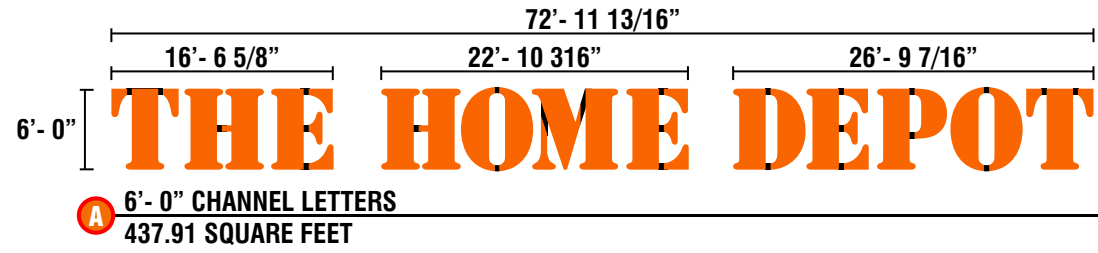
EXHIBIT APPROVED BY:

# I-35 & Cibolo Valley Road - Schertz, Texas 78108

NOTE: INSTALL DIMENSIONS SUBJECT TO CHANGE WHEN SCALABLE ELEVATIONS BECOME AVAILABLE.



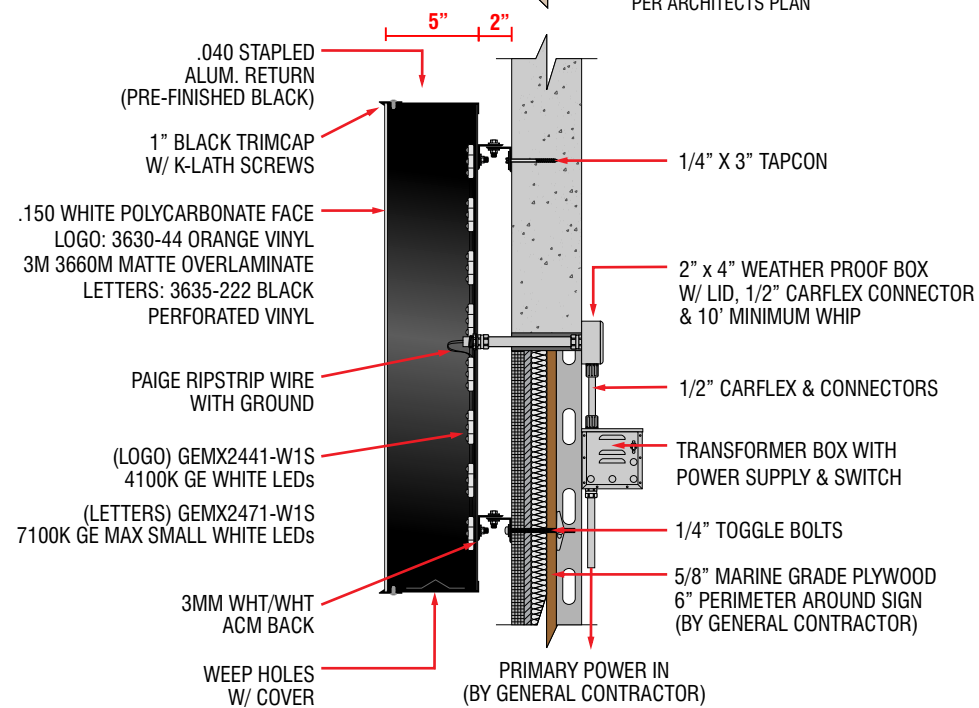
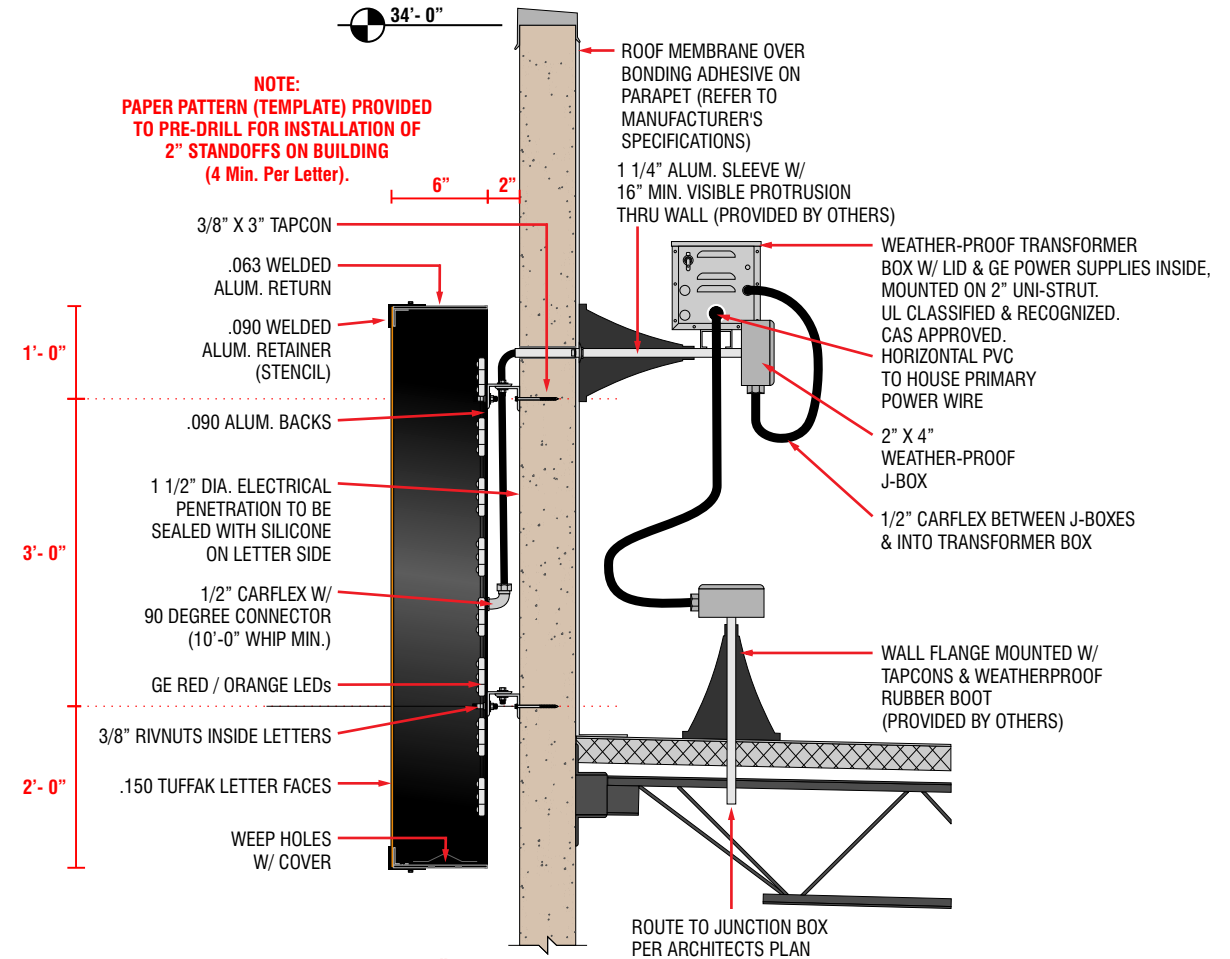
# I-35 & Cibolo Valley Road - Schertz, Texas 78108



	A	B	C	D	E	A X B = SQ. FT.
1" Black Trimcap	3'-0"	36'-5 15/16"	8'-3 3/16"	11'-5 1/16"	13'-4 11/16"	109.48
	3'-6"	42'-6 7/8"	9'-7 11/16"	13'-3 15/16"	15'-7 1/2"	149.01
Aluminum Retainers	4'-0"	48'-7 7/8"	11'-0 3/16"	15'-2 3/4"	17'-10 1/4"	194.63
	4'-6"	54'-8 7/8"	12'-4 3/4"	17'-1 5/8"	20'-1 1/16"	246.33
	5'-0"	60'-9 7/8"	13'-9 1/4"	19'-0 1/2"	22'-3 13/16"	304.11
	5'-6"	66'-10 13/16"	15'-1 13/16"	20'-11 5/16"	24'-6 5/8"	367.96
	6'-0"	72'-11 13/16"	16'-6 5/16"	22'-10 3/16"	26'-9 7/16"	437.91
	6'-6"	79'-0 13/16"	17'-10 13/16"	24'-9"	29'-0 3/16"	513.94
	7'-0"	85'-1 13/16"	19'-3 3/8"	26'-7 7/8"	31'-3"	596.06



	A	B	C	D	A X D = SQ. FT.
*STANDARD SIZE	1'-0"	7 1/2"	2'-8 3/8"	3'-10"	3.8
	1'-8"	12 1/2"	4'-6"	6'-4 5/8"	10.6
	2'-0"	1'-3 3/16"	5'-4 3/4"	7'-8"	15.33
	*3'-0"	1'-10 3/4"	8'-1 1/8"	11'-6"	34.5
	4'-0"	2'-6 3/8"	10'-9 7/16"	15'-4"	61.33



# I-35 & Cibolo Valley Road - Schertz, Texas 78108

13'- 7 7/16"  
 2'- 6"  
**LUMBER**  
 2'- 6" CHANNEL LETTERS  
 34 SQUARE FEET

A	B	A X B = SQ. FT.
1'- 0"	5'- 5 3/8"	5.45
1'- 6"	8'- 2 1/16"	12.26
2'- 0"	10'- 10 3/4"	21.8
*2'- 6"	13'- 7 7/16"	34
3'- 0"	16'- 4 1/8"	49

\*STANDARD SIZE

28'- 9"  
 14'- 7"      12'- 8 3/4"  
 2'- 6"  
**GARDEN CENTER**  
 2'- 6" CHANNEL LETTERS  
 72 SQUARE FEET

A	B	C	D	A X B = SQ. FT.
1'- 0"	11'- 6"	5'- 10"	5'- 1 3/8"	11.5
1'- 6"	17'- 3"	8'- 9"	7'- 7 11/16"	25.88
2'- 0"	23'- 0"	11'- 8"	10'- 2 3/16"	46
*2'- 6"	28'- 9"	14'- 7"	12'- 8 3/4"	71.88
3'- 0"	34'- 6"	17'- 6"	15'- 3 5/16"	103.5

\*STANDARD SIZE

