

# CCMA South WWTP Expansion



City Council Meeting

April 15, 2025

# South Plant WWTP Permit per TCEQ

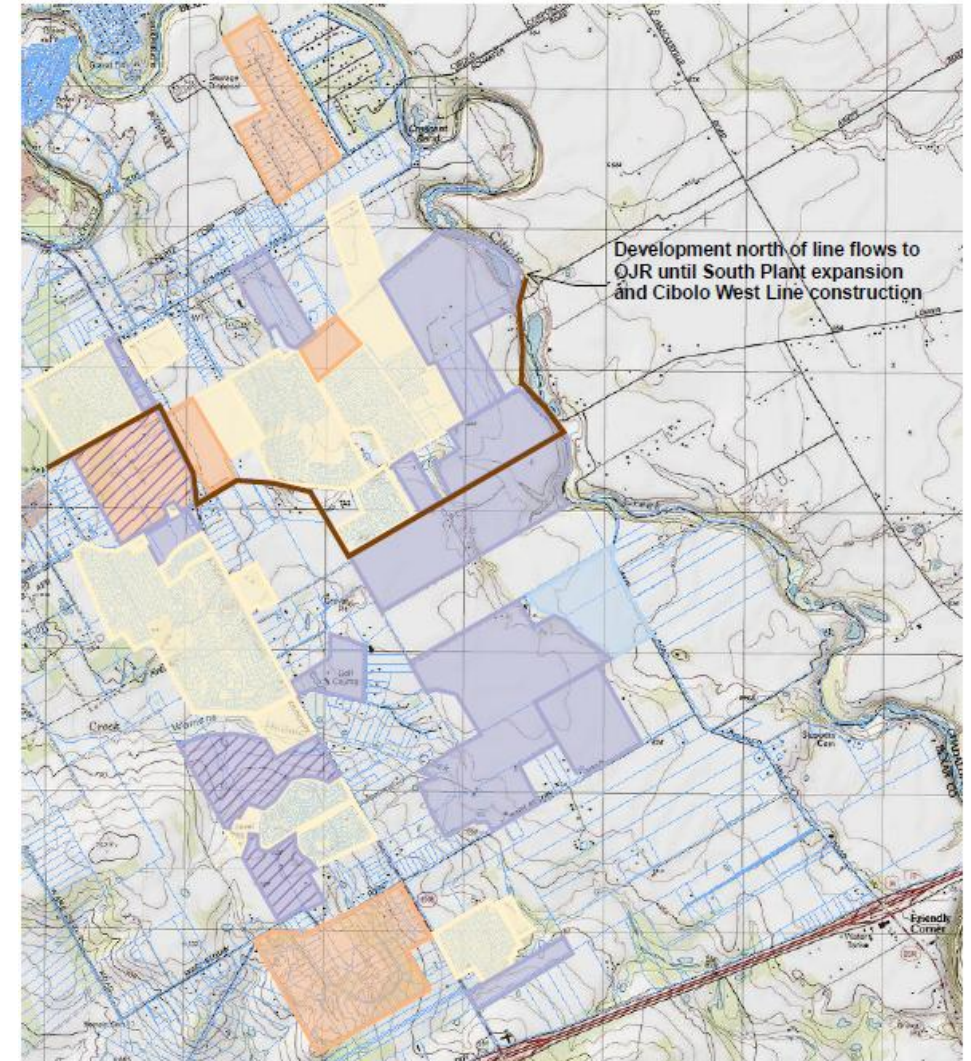
- These are the phases identified in the current CCMA discharge permit up to 3 MGD
- Interim Phase 1 (Current Phase)
  - 0.5 MGD (million gallons per day)
  - 3,225 LUEs worth of capacity (living unit equivalents, or single-family residences)
- Interim Phase 2
  - 1 MGD
  - 6,450 LUEs
- Final Phase
  - 3 MGD
  - 19,350 LUEs
- The plant can be expanded to any capacity between 1 MGD and 3 MGD with a minor amendment to the permit
- Expansion of the plant beyond 3 MGD will require a major amendment

# CCMA South Plant WWTP Service Area



# Demand for Wastewater Service – West of Cibolo Creek

- The following table reflects City of Schertz commitments to be served by the **CCMA South Plant WWTP**.
- Residential developments that flow to the CCMA South Plant are highlighted by red outline.



# Schertz Expansion Request of CCMA

- Existing Southern WTP has a total of 0.5 MGD
  - Schertz has 0.25 MGD capacity out of the 0.5 MGD but 0.125 MGD is allocated to GVSUD
  - Cibolo has 0.25 MGD capacity out of the 0.5 MGD
- Schertz is requesting an additional 1.375 MGD (8,870 LUEs) to accommodate our flow requirements
- The plant expansion would be a minimum of 1.875 MGD
  - Schertz would have 1.625 MGD capacity (minus GVSUD's 0.125 MGD)
  - Cibolo would still only have 0.25 MGD capacity, if it does not participate in the expansion
  - Cibolo is considering whether to participate in an expansion and if so, at what level of capacity.

# 1.875 MGD Expansion Construction

- 1.875 MGD (12,096 LUEs) expansion to a permitted total of 2.375 MGD (15,322 LUEs)
  - Schertz would get an additional 1.375 MGD (8,870 LUEs) to accommodate our flow requirements
    - Schertz would own a total of 1.625 MGD (10,483 LUEs) in the expanded facility but GVSUD would have rights to 0.125 MGD (806 LUEs).
  - Cibolo would receive an additional 0.5 MGD (3,225 LUEs) to accommodate their own flow requirements plus their obligations to GVSUD under the comprehensive settlement agreement
  - Additional capacity for GVSUD is not included in this option, but if requested, should have little impact on the pricing for the two cities

# 1.875 MGD Expansion, Estimated Costs

- 1.875 MGD expansion would cost approximately \$64.69 million
  - This is assuming \$30 per gallon of construction costs and a 15% Engineering cost
  - Construction costs anywhere between \$25 per gallon and \$60 per gallon, with most recent jobs of this size and scope trending toward the lower end
  - Construction costs \$56.25 million
    - Schertz' share of cost at roughly 73% of the capacity would be roughly \$41.25 million
  - Design costs \$8.44 million
    - Schertz' share at roughly 73% would be roughly \$6.2 million
  - Total estimated costs for Schertz would be roughly \$47.5 million

# Other Expansion Options

- If Cibolo were to opt in for more capacity and/or GVSUD opted in for capacity, the overall project cost would increase but Schertz' estimated cost would be the same, as Cibolo and/or GVSUD would bear the costs for that additional capacity.

# Timeline and Next steps on Plant Expansion

- Cibolo and Schertz with CCMA to seek GVSUD's request for additional capacity
- 6-12 months for amending tri-party funding agreement between the cities and CCMA, potentially GVSUD
- 15-20 months of design and financing
  - The need for a major amendment can add time to this portion of the job, but would generally run concurrently with design
    - Litigation associated with the permitting process can add years to the project
- 3 months to advertise the project and evaluate respondents
- 24-30 months for construction
- **48-65 months for project completion**

# Timeline and Next steps on Schertz Obtaining Interim Capacity

- Schertz is out of its current allocated capacity when considering the rights to capacity GVSUD has per the settlement Agreement.
- Presently only Schertz is sending flows to the south plant.
- Schertz has requested that additional interim capacity, until and expansion of the plant is complete from both Cibolo and GVSUD.
- If Schertz can obtain an additional .300 MGD in capacity that will accommodate the immediate requests for additional capacity
- Subsequent Requests for capacity will have to be lifted up to the OJR (North) plant.

# Questions and Discussion