

AMENDMENT TO COMMUNICATIONS FACILITIES LICENSE AGREEMENT

THIS AMENDMENT TO COMMUNICATIONS FACILITIES LICENSE AGREEMENT ("Amendment") is made and entered into on _____, 2009, by and between the City of Texas City, a municipality ("Landlord"), and T-Mobile West Corporation, a Delaware corporation, as successor in interest to VoiceStream Houston, Inc. ("Tenant").

Recitals

The parties hereto recite, declare and agree as follows:

A. Landlord and Tenant entered into a license agreement dated August 14, 2001 (including any prior amendments, the "Lease"), with respect to Premises located at 2801 21st Street, Texas City, Texas.

B. Landlord and Tenant desire to enter into this Amendment in order to modify and amend certain provisions of the Lease.

NOW, THEREFORE, in consideration of the mutual covenants and agreements herein contained and other good and valuable consideration, the receipt and sufficiency of which are hereby acknowledged, Landlord and Tenant covenant and agree as follows:

1. Effective as of February 18, 2010, (a) Tenant will have the right to modify its Antenna Facilities as described and depicted on Exhibit A, which is attached hereto and by this reference incorporated herein, and Landlord hereby consents to and approves of the modifications described and depicted in Exhibit A in all respects, and (b) the Rent that Tenant pays Landlord will be increased by Fifty Dollars (\$50.00) per month.

2. Tenant's notice addresses in the Lease are deleted in their entirety and replaced with the following:

If to Tenant:

T-Mobile West Corporation
2 Greenwood Plaza, Suite 1100
Houston, TX 77046
Attn: Lease Administrator

With a copy to:

T-Mobile West Corporation
12920 SE 38th Street
Bellevue, WA 98006
Attn: PCS Lease Administration

3. The terms and conditions of the Lease are incorporated herein by this reference, and capitalized terms used in this Amendment shall have the same meanings such terms are given in the Lease. Except as specifically set forth herein, this Amendment shall in no way modify, alter or amend the remaining terms of the Lease, all of which are ratified by the parties and shall remain in full force and effect. To the extent there is any conflict between the terms and conditions of the Lease and this Amendment, the terms and conditions of this Amendment will govern and control.

4. Landlord represents and warrants to Tenant that the consent or approval of no third party, including, without limitation, a lender, is required with respect to the execution of this Amendment, or if any such third party consent or approval is required, Landlord has obtained any and all such consents or approvals.

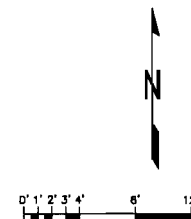
IN WITNESS WHEREOF, the parties have executed this Amendment on the day and year first written above.



_____, a

By: _____
Name: _____
Title: _____
Date: _____

**T-Mobile West Corporation, a
Delaware corporation**

By: _____
Name: Keith A. Haydon
Title: Director, Engineering & Operations
Date: _____



REVISIONS	DATE
A ISSUED FOR REVIEW	01/05/10
M ENGINEER	
ZOHNS/L/SARA	
CONSTRUCTION ENGINEER	
PLUMB MET	
 SSC 6500 W. 110th Street Suite 300 Overland Park, Kansas 66210 Phone: 913-438-7730 Fax: 913-438-7777	
<i>Civil Mech Trans Life</i>  T-MOBILE TEXAS WEST CORP. 2 GREENWAY PLAZA SUITE 1100 HOUSTON, TEXAS 77046	
STATE OF TEXAS CERTIFICATE OF AUTHORIZATION # - 9847 MEMBER ENGINEER MLO MICHAEL L OWENS 101337 STRUCTURAL/CIVIL TWS TERRANCE M SUTER 048468 ELECTRICAL	
THE INFORMATION CONTAINED IN THIS SET OF DOCUMENTS IS PROPRIETARY BY NATURE. ANY USE OR DISCLOSURE OTHER THAN THAT WHICH RELATES TO T-MOBILE IS STRICTLY PROHIBITED	
SITE PLAN	
TEXAS CITY WATER TOWER A3D0099A 2801 21ST N. TEXAS CITY, TEXAS 77550	
DRAWN BY: D.D. SIMS	
CHECKED BY: MLO/TWS	
DATE 01/05/10	
PLOT SCALE AS NOTED	
DRAWING NAME A300099A -- A-1.dwg	
DRAWING NUMBER	
<div style="font-size: 2em; font-weight: bold;">A-1</div>	

COAX CABLE IDENTIFICATION

- FURNISH & INSTALL EUPEN COVER TRAY
OVER EXISTING COAX MOUNTING HARDWARE.
PAINT TO MATCH EXISTING WATER TOWER

150' - 0"
CL OF PROPOSED T-MOBILE ANTENNAS

2

2 3/8" SCH 40 PIPE

1/2" COAX JUMPER MIN. BEND RADIUS PER MFG. SPEC. 1 SUPPORT FOR 3' JUMPER W/ LNA 2 SUPPORT FOR 8' JUMPERS WITHOUT LNA

LNA BOX

SECTOR GROUND BUS BAR FOR EACH SECTOR

EXISTING HANDRAIL

PROPOSED SUPPLEMENTAL WATER TANK HANDRAIL ANTENNA MOUNT P/N EU10878

DOWNTILT ASSEMBLY REQUIRED FOR ALL PANEL TYPE ANTENNAS

PANEL ANTENNA

NOTE:
NEW T-MOBILE ANTENNA MOUNTS STRUCTURAL ANALYSIS DONE BY OTHERS.

NOTE:
NEW T-MOBILE ANTENNA
MOUNTS STRUCTURAL
ANALYSIS DONE BY OTHERS

REVISIONS	DATE
△ ISSUED FOR REVIEW	01/03/10

T I-MOBILE TEXAS WEST CORP.
2 GREENWAY PLAZA
SUITE 1100
HOUSTON, TEXAS 77046

STATE OF TEXAS
 CERTIFICATE OF AUTHORIZATION #F-9847
 RESPONSIBLE ENGINEER:
 MLO MICHAEL L. OWENS 101537 STRUCTURAL/CIVIL
 TWS TERRANCE M. SUPER 84068 ELECTRICAL

THE INFORMATION CONTAINED IN THIS SET OF DOCUMENTS IS PROPRIETARY BY NATURE ANY USE OR DISCLOSURE OTHER THAN THAT WHICH RELATES TO T-MOBILE IS STRICTLY PROHIBITED

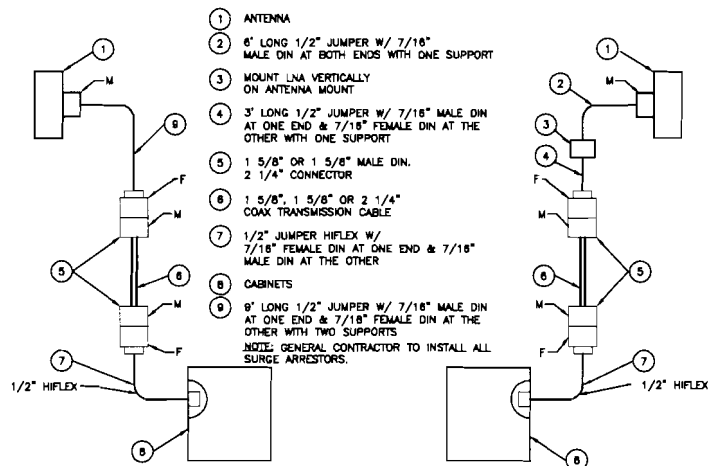
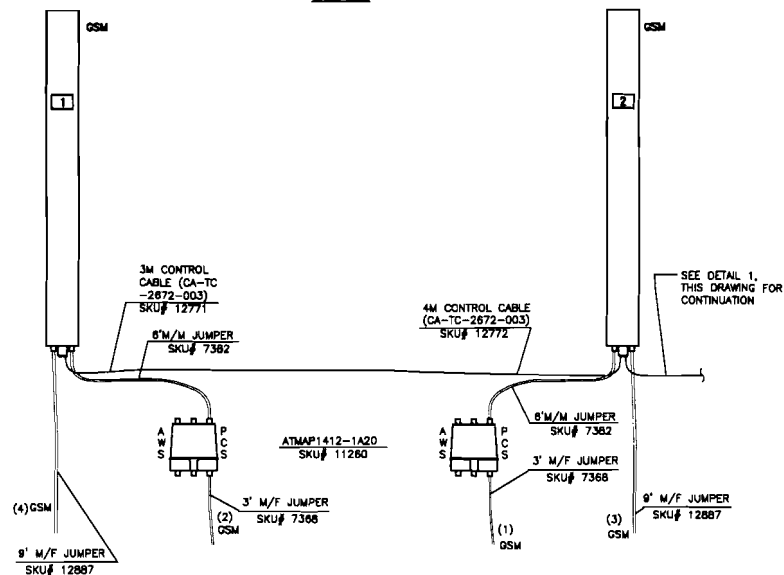
TOWER ELEVATION

TEXAS CITY WATER
TOWER
A3D0099A
2801 21ST N.
TEXAS CITY, TEXAS 77580

DRAWN BY:
 D.D. SIMS
 CHECKED BY:
 MLO/TMS
 DATE
 01/05/10
 PLOT SCALE
 AS NOTED
 DRAWING NAME
 D0099A - A-2.dwg
 DRAWING NUMBER

A-2

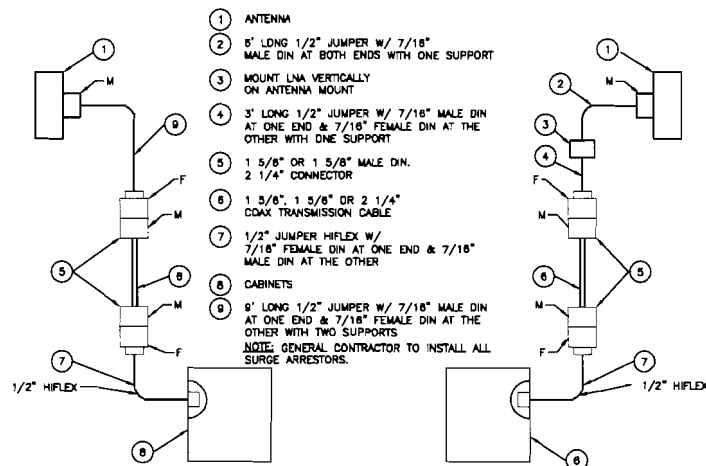
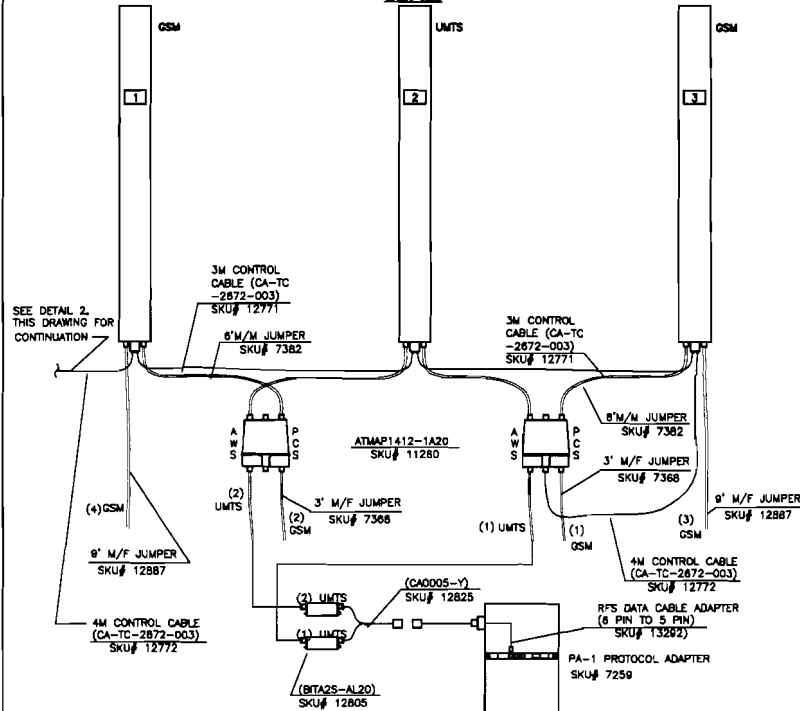
BACK VIEW



ANTENNA CONNECTION DIAGRAM (SECTOR C)

2

BACK VIEW



ANTENNA CONNECTION DIAGRAM (SECTOR D)

1

[illegible]

RF Data Sheet

T-Mobile

12/29/2009

Site ID: A3D0099A
 Address: 2801 21st ST N (verified)
 City: Texas City
 State/Zip: TX 77590
 Site AMBL: 10

Site Name: Texas City Water Tower
 Configuration: 3-7-8
 Site Lat: 29.4111 29-24-40.00
 Site Lon: -94.9250 94-55-32.00
 Sector Type: GSM

RF Comment: 4 T1 needed for GSM
 Site is edge and UMTS
 2 T1 for UMTS
 3 Cabs needed

Seq	Inventory Type	Description	Qty	UM Qty	UM Desc
1	BBU	High Cap BBU for UltraSite	0	1	EA
1	BTS	Ultrastar	0	1	EA
1	BTS	UTMS BTS Nokia - FCOA	0	1	EA
1	Cabinet	Ultrastar Cabinet	0	1	EA
2	Cabinet	Ultrastar Cabinet	0	1	EA
1	E911	Bracket for L1 GPS Antenna	0	1	EA
1	E911	LMU Antenna for Nokia/Nokia	0	1	EA

Sector: Orientation: Ant Agl: Mech Down tilt: Elect Down tilt: Max Ant Qty: BTS Config
 A 0 150 0 0 0 3+7+4+8

Seq	Inventory Type	Description	Qty	UM Qty	UM Desc	UM Desc Horiz Beam Width	Vert Beam Width	Gain	Elec Down tilt
1	Antenna	APX18-206517S-C-ACU	0	2	EA	65	5.0	18.8	

Seq	Inventory Type	Description	Qty	UM Qty	UM Desc
1	CABLE	1-5/8" Foam Flex	4	170	FT
1	Radio	TRX (Nokia Ultrastar EDGE TRX)	1	EA	
2	Radio	TRX (Nokia Ultrastar EDGE TRX)	1	EA	
3	Radio	TRX (Nokia Ultrastar EDGE TRX)	1	EA	
1	TMA_LNA	ATMAP1412D-1A20	0	1	EA

Sector: Orientation: Ant Agl: Mech Down tilt: Elect Down tilt: Max Ant Qty: BTS Config
 B 100 150 0 0 0 3+7+4+8

Seq	Inventory Type	Description	Qty	UM Qty	UM Desc	UM Desc Horiz Beam Width	Vert Beam Width	Gain	Elec Down tilt
1	Antenna	APX18-206517S-C-ACU	0	2	EA	65	5.0	18.8	

Seq	Inventory Type	Description	Qty	UM Qty	UM Desc
1	CABLE	1-5/8" Foam Flex	4	170	FT
1	Combiner	WCPA Ultrastar Combiner	0	1	EA
2	Combiner	WCPA Ultrastar Combiner	0	1	EA
3	Combiner	WCPA Ultrastar Combiner	0	1	EA
4	Combiner	WCPA Ultrastar Combiner	0	1	EA

Page 1

RF Data Sheet

T-Mobile

12/29/2009

1 Radio TRX (Nokia Ultrastar EDGE TRX) 1 EA
 2 Radio TRX (Nokia Ultrastar EDGE TRX) 1 EA
 3 Radio TRX (Nokia Ultrastar EDGE TRX) 1 EA
 4 Radio TRX (Nokia Ultrastar EDGE TRX) 1 EA
 5 Radio TRX (Nokia Ultrastar EDGE TRX) 1 EA
 6 Radio TRX (Nokia Ultrastar EDGE TRX) 1 EA
 7 Radio TRX (Nokia Ultrastar EDGE TRX) 1 EA
 1 TMA_LNA ATMAP1412D-1A20 0 1 EA

Sector: Orientation: Ant Agl: Mech Down tilt: Elect Down tilt: Max Ant Qty: BTS Config
 C 190 150 0 0 3 3+7+4+8

Seq	Inventory Type	Description	Qty	UM Qty	UM Desc	UM Desc Horiz Beam Width	Vert Beam Width	Gain	Elec Down tilt
1	Antenna	APX18-206517S-C-ACU	0	2	EA	65	5.0	18.8	

Seq	Inventory Type	Description	Qty	UM Qty	UM Desc
1	CABLE	1-5/8" Foam Flex	4	170	FT
1	Radio	TRX (Nokia Ultrastar EDGE TRX)	1	EA	
2	Radio	TRX (Nokia Ultrastar EDGE TRX)	1	EA	
3	Radio	TRX (Nokia Ultrastar EDGE TRX)	1	EA	
4	Radio	TRX (Nokia Ultrastar EDGE TRX)	1	EA	
1	TMA_LNA	ATMAP1412D-1A20	0	1	EA

Sector: Orientation: Ant Agl: Mech Down tilt: Elect Down tilt: Max Ant Qty: BTS Config
 D 260 150 0 0 2 3+7+4+8

Seq	Inventory Type	Description	Qty	UM Qty	UM Desc	UM Desc Horiz Beam Width	Vert Beam Width	Gain	Elec Down tilt
1	Antenna	APX18-206517S-C-ACU	0	2	EA	65	5.0	18.8	

Seq	Inventory Type	Description	Qty	UM Qty	UM Desc
1	CABLE	1-5/8" Foam Flex	4	170	FT
1	Combiner	WCPA Ultrastar Combiner	0	1	EA
2	Combiner	WCPA Ultrastar Combiner	0	1	EA
3	Combiner	WCPA Ultrastar Combiner	0	1	EA
1	Radio	TRX (Nokia Ultrastar EDGE TRX)	1	EA	
2	Radio	TRX (Nokia Ultrastar EDGE TRX)	1	EA	
3	Radio	TRX (Nokia Ultrastar EDGE TRX)	1	EA	
4	Radio	TRX (Nokia Ultrastar EDGE TRX)	1	EA	

Page 2

RF DATA SHEET

REVISIONS	DATE
ISSUED FOR REVIEW	01/05/10

RF DESIGNER

DRAWING/LEADER

CONSTRUCTION ENGINEER

FIXED NET

SSC
 8500 W. 110th Street, Suite 300
 Overland Park, Kansas 66210
 Phone: 913-438-7700 Fax: 913-438-7777

Get More From Life
T-MOBILE TEXAS WEST CORP.
 2 GREENWAY PLAZA
 SUITE 1100
 HOUSTON, TEXAS 77046

STATE OF TEXAS
 CERTIFICATE OF AUTHORIZATION # 0047
 RESPONSIBLE ENGINEER:
 MLO MICHAEL L. OWENS 101837 STRUCTURAL/CIVIL
 THE FIRM: M. L. OWENS & ASSOCIATES, INC. ELECTRICAL

THE INFORMATION CONTAINED IN THIS SET OF DOCUMENTS IS PROPRIETARY BY NATURE. ANY USE OR DISCLOSURE OTHER THAN THAT WHICH RELATES TO T-MOBILE IS STRICTLY PROHIBITED.

RF DATA SHEET
 (1 OF 3)

TEXAS CITY WATER
 TOWER
 A3D0099A
 2801 21ST N.
 TEXAS CITY, TEXAS 77590

DRAWN BY:

C.O. SIMS

CHECKED BY:

MLO/TMS

DATE:

01/05/10

PLG/SCALE:

AS NOTED

DRAWING NAME:

A3D0099A - A-5.dwg

DRAWING NUMBER:

A-5


1

--T-Mobile--

5	Radio	TRX (Nokia Utrasite EDGE TRX)	1	EA
6	Radio	TRX (Nokia Utrasite EDGE TRX)	1	EA
7	Radio	TRX (Nokia Utrasite EDGE TRX)	1	EA
8	Radio	TRX (Nokia Utrasite EDGE TRX)	1	EA
1	TMA_LNA	ATMAP1412D-1A20	0	EA
2	TMA_LNA	ATMAP1412D-1A20	0	EA

Sector:	WO Orientation:	WO Agt:	WO Downlgt:	WO #:
Inventory Type	Description	Qty	UM Qty	

RF DATA SHEET

REVISIONS	DATE
A ISSUED FOR REVIEW	01/05/10
BY ENGINEER	
ZOHANA/LEADINA	
CONSTRUCTION ENGINEER	
PINED KEY	
 SSC	
8500 W. 110th Street, Suite 300 Overland Park, Kansas 66210 Phone: 813-436-7700 Fax: 813-436-7777	
<i>Civil Means From Life</i>	T-MOBILE TEXAS WEST CORP. 2 GREENWAY PLAZA SUITE 1100 HOUSTON, TEXAS 77046
STATE OF TEXAS	
CERTIFICATE OF AUTHORIZATION #F--0947	
RESPONSIBLE ENGINEER:	
MLO MICHAEL L OWENS	101537 STRUCTURAL/CIVIL
TMS TERRANCE M. SUPPER	049058 ELECTRICAL
THE INFORMATION CONTAINED IN THIS SET OF DOCUMENTS IS PROPRIETARY BY NATURE. ANY USE OR DISCLOSURE OTHER THAN THAT WHICH RELATES TO T-MOBILE IS STRICTLY PROHIBITED.	
RF DATA SHEET (2 OF 3)	
TEXAS CITY WATER TOWER A3D0099A 2601 21ST N. TEXAS CITY, TEXAS 77550	
DRAWN BY: D.D. SIMS	
CHECKED BY: MLO/TMS	
DATE 01/05/10	
PLOT SCALE AS NOTED	
DRAWING NUMBER A3D0099A -- A-B.dwg	
DRAWING NUMBER	
A-6	

RF Data Sheet

T-Mobile

12/28/2009

Site ID: A3D0099A
Address: 2801 21st ST N. (verified)
City: Texas City
State/Zip: TX 77590
Site AMSL: 10

Site Name: Texas City Water Tower
Configuration: 3-7-8
Site Lat: 29.4111 29-24-40.00
Site Lon: -94.9258 94-55-32.00
Sector Type: UMTS

RF Comment: 4 T1 needed for GSM
Site is edge and UMTS
2 T1 for UMTS
3 Cabs needed

Sector:	Site Level:	Max Cabinets:			
Seq	Inventory Type	Description	Qty	UM Qty	UM Desc
1	BBU	High Cap BBU for UltraSite	0	1	EA
1	BTS	UltraSite	0	1	EA
1	BTS	UMTS BTS Nokia - FCOA	0	1	EA
1	Cabinet	UltraSite Cabinet	0	1	EA
2	Cabinet	UltraSite Cabinet	0	1	EA
1	EB11	Bracket for L1 GPS Antenna	0	1	EA
1	EB11	LMU Antenna for Nortel/Nokia	0	1	EA

Sector: Orientation: Ant Agl: Mech Downlft: Elect Downlft: Max Ant Qty: BTS - Config
11 0 160 0 2

Seq	Inventory Type	Description	UM Qty	UM Desc	Horiz Beam Width	Vert Beam Width	Gain	Elec Downlft
1	Antenna	APX18-206517S-C-ACU	0	1	EA	85	5.0	18.8

Seq	Inventory Type	Description	Qty	UM Qty	UM Desc
1	CABLE	1-5/8" Foam Flex	2	170	FT
1	TMA_LNA	ATMAP1412D-1A20	0	1	EA

Sector: Orientation: Ant Agl: Mech Downlft: Elect Downlft: Max Ant Qty: BTS - Config
21 120 150 0 3

Seq	Inventory Type	Description	UM Qty	UM Desc	Horiz Beam Width	Vert Beam Width	Gain	Elec Downlft
1	Antenna	APX18-206517S-C-ACU	0	1	EA	85	5.0	18.8

Seq	Inventory Type	Description	Qty	UM Qty	UM Desc
1	CABLE	1-5/8" Foam Flex	2	170	FT
1	TMA_LNA	ATMAP1412D-1A20	0	1	EA

Sector: Orientation: Ant Agl: Mech Downlft: Elect Downlft: Max Ant Qty: BTS - Config
31 240 160 0 2

Seq	Inventory Type	Description	UM Qty	UM Desc	Horiz Beam Width	Vert Beam Width	Gain	Elec Downlft
1	Antenna	APX18-206517S-C-ACU	0	1	EA	65	5.0	18.8

Seq	Inventory Type	Description	Qty	UM Qty	UM Desc
-----	----------------	-------------	-----	--------	---------

Page 4

RF Data Sheet

T-Mobile

12/29/2009

1 CABLE 1-5/8" Foam Flex 2 170 FT
1 TMA_LNA ATMAP1412D-1A20 0 1 EA

Future Inventory

Sector: Inventory Type

WO Orientation: Description

WO Agl: Qty

WO Downlft: U/M Qty

WO #:

REVISIONS	DATE
ISSUED FOR REVIEW	01/05/10

RF ENGINEER

CONSTRUCTION ENGINEER

FIELD NET



8500 W. 110th Street, Suite 300
Overland Park, KS 66210
Phone: 913-438-7700 Fax: 913-438-7777

Call Me From Life
T-MOBILE TEXAS WEST CORP.
2 GREENWAY PLAZA
SUITE 1100
HOUSTON, TEXAS 77046

STATE OF TEXAS
CERTIFICATE OF AUTHORIZATION #1-8647
RESPONSIBLE ENGINEER:
MLO MICHAEL L. DREYER 101337 STRUCTURAL/CIVIL
THIS TERRANCE M. SUPER 84988 ELECTRICAL

THE INFORMATION CONTAINED IN THIS SET OF
DOCUMENTS IS PROPRIETARY BY NATURE. ANY USE OR
DISCLOSURE OTHER THAN THAT WHICH RELATES TO
T-MOBILE IS STRICTLY PROHIBITED.

RF DATA SHEET
(3 OF 3)

TEXAS CITY WATER
TOWER
A3D0099A
2801 21ST N.
TEXAS CITY, TEXAS 77590

DRAWN BY:

D.D. SIMS

CHECKED BY:

MLO/TMS

DATE

01/05/10

PLAT SCALE

AS NOTED

DRAWING NAME

A3D0099A - A-7.dwg

DRAWING NUMBER

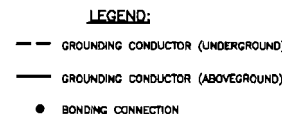
A-7

RF DATA SHEET



1

Page 5

1. GROUNDING SHALL COMPLY WITH NEC ARTICLE 250.
2. EQUIPMENT CONTRACTOR SHALL GROUND COAXIAL CABLE SHIELDS IMMEDIATELY AT BOTH ENDS USING MANUFACTURER'S SPECIFIED CABLE GROUNDING KITS.
3. BURIED GROUND RING SHALL BE #2 TINNED COPPER BARE WIRE. ALL OTHER GROUNDING TO BE #2 BARE WIRE OR AS SHOWN IN DWG.
4. ROUTE GROUNDING CONNECTIONS ALONG THE SHORTEST AND STRAIGHTEST PATH POSSIBLE, EXCEPT AS OTHERWISE INDICATED. GROUNDING LEADS SHOULD NEVER BE BENT AT A RIGHT ANGLE. ALWAYS MAKE AT LEAST 12" RADIUS BENDS.
5. ALL BURIED GROUNDING CONNECTIONS SHALL BE CARMOLD. INSTALLATION SHALL CONFORM TO MANUFACTURER'S REQUIREMENTS. DO NOT ALLOW BARE COPPER WIRE TO BE IN CONTACT WITH GALVANIZED STEEL.
6. BOND TO EQUIPMENT OF GROUND RING ANY METAL OBJECTS WITHIN 7 FEET OF BITS, INCLUDING FENCE POSTS.
7. CONNECTIONS TO MGB SHALL BE ARRANGED IN THREE MAIN GROUPS:
SURGE PRODUCERS (COAXIAL CABLE GROUND KITS, TELCO AND POWER GROUND OR SURGE PROTECTOR)
SURGE ABSORBERS (GROUNDING, ELECTRICAL RING OR BUILDING STEEL)
NON-SURGE OBJECTS (EGG GROUND IN BITS)
8. CONNECTIONS TO GROUND BARS SHALL BE MADE WITH TWO #4 LUGS WITH LOCK OR STAR WASHERS AND NO-OX DR EQUIVALENT PLACED BETWEEN CONNECTOR AND GROUND BAR.
9. THE GROUND ELECTRODE SYSTEM, SHALL CONSIST OF DRIVEN GROUND RODS UNIFORMLY SPACED AT 8'-0" MINIMUM AROUND CELL SITE. THE GROUND RODS SHALL BE 5/8" X 10'-0" COPPER CLAD STEEL. THE RODS SHALL BE INTERCONNECTED WITH #2 TINNED COPPER WIRE. THERE SHALL BE A MINIMUM OF 1 FOOT BELOW THE SURFACE OF THE SOIL.
10. MEASURED GROUND RESISTANCE SHALL BE 5 OR LESS. NOTIFY ENGINEER IMMEDIATELY IF RESISTANCE IS ABOVE 5.
11. LOCATE MAIN LINE GROUND "12"-18" BEHIND CONNECTORS.
12. USE THE GROUND JUMPERS BETWEEN GRIPSTRUT BRIDGE SECTION OF ICE BRIDGE & JUMPER FROM THE GRIPSTRUT BRIDGE SECTION TO THE ICE BRIDGE POST CLOSEST TO THE BITS.
13. SLACK FOR STRESS RELIEF OF APPROX 3" SHOULD BE PROVIDED ON ALL GROUNDING CABLES. MAX BEND RADIUS 12" FOR ALL CABLES.
14. SPRAY ALL FIELD WELDS BONDED TO TOWER WITH Z.R.C. (ZINC RICH PAINT)



GROUNDING PLAN

REVISIONS	DATE
A ISSUED FOR REVIEW	01/05/10
RF ENGINEER	
ZONING/LANDUSE	
CONSTRUCTION ENGINEER	
FIXED MET	
 <p>8500 W. 110th Street, Suite 300 Overland Park, Kansas 66210 Phone: 913-438-7700 Fax: 913-438-7777</p>	
 <p><i>Get More From Life</i></p> <p>T-MOBILE TEXAS WEST CORP. 2 GREENWAY PLAZA SUITE 1100 HOUSTON, TEXAS 77046</p>	
STATE OF TEXAS CERTIFICATE OF AUTHORIZATION #F-9647 RESPONSIBLE ENGINEER: MLO MICHAEL L. OWENS 101537 STRUCTURAL/CIVIL TWS TERRANCE H. SUPER 04088 ELECTRICAL	
THE INFORMATION CONTAINED IN THIS SET OF DOCUMENTS IS PROPRIETARY BY NATURE. ANY USE OR DISCLOSURE OTHER THAN THAT WHICH RELATES TO T-MOBILE IS STRICTLY PROHIBITED.	
GROUNDING PLAN	
TEXAS CITY WATER TOWER A3D0099A 2801 21ST N. TEXAS CITY, TEXAS 77590	
DRAWN BY: D.D. SIMS	
CHECKED BY: MLO/TWS	
DATE 01/05/10	
PLOT SCALE AS NOTED	
DRAWING NAME A3C0182A -- G-1.dwg	
DRAWING NUMBER	
<h1>G-1</h1>	



T-MOBILE TEXAS WEST CORP.
2 GREENWAY PLAZA
SUITE 1100
HOUSTON, TEXAS 77046

DIPLOMA

G-2



