

Williamson County

Asset Status Change Form

The following asset(s) is(are) considered for: (select one)

☐ TRANSFER between county departments

☐ TRADE-IN for new assets for the county

☒ SALE at the earliest auction

☐ DONATION to a non-county entity

Asset List:

Quantity	Description (year, make, model, etc.)	Manufacturer ID# (serial, service tag, or VIN)	County Tag#	Condition of Assets (Working, Non-Working, Unknown)
53	Class B short sleeve shirts (stained, torn, used, faded)	no id #	no tag #	Non-Working
49	Class A long sleeve shirts (stained, torn, used, faded)	no id #	no tag #	Non-Working
1	BDU long sleeve camo shirt (faded, used)	no id #	no tag #	Non-Working
3	BDU pants (faded, torn, used)	no id #	no tag #	Non-Working
				Non-Working
				Non-Working
				Non-Working
	*all insignias have been removed - unsuitable for reissue			Non-Working

Parties Involved:

FROM (Transferor Department): 560 - LAW ENFORCEMENT INVENTORY

Transferor - Elected Official/Department Head/

Authorized Staff:

Contact Person:

L.C. Marshall

Patricia Amison

Print Name

Print Name

Signature

+1 (512) 943-1349

Phone Number

Date May 5, 2009

TO (Transferee Department/Auction/Trade-In/Donor): Auction -- If the above assets are listed for sale at

Transferee - Elected Official/Department Head/ auction and no bids are made, the Purchasing Director

Authorized Staff OR Donor - Representative: (If being may dispose of or donate these assets.

approved for Sale or Trade-in, no signature is necessary.)

Contact Person:

Print Name

Print Name

Signature

Phone Number

Date

For assets donated to a non-county entity:

The Donee accepts the above assets and has determined the Fair Market Value of assets to be \$

Forward to County Auditor's Office

This Change Status was approved as agenda item # _____ in Commissioner's Court on _____

If for Sale, the asset(s) was(were) delivered to warehouse on _____ by _____

Williamson County

Asset Status Change Form

Print Form

The following asset(s) is(are) considered for: (select one)

- ☐ TRANSFER bet ween county departments
 ☐ TRADE-IN for new assets of similar type for the county
 ☐ DESTRUCTION due to Public Health / Safety
☒ SALE at the earliest auction *
 ☐ DONATION to a non-county entity

Asset List:

Quantity	Description (year, make, model, etc.)	Manufacturer ID# (serial, service tag, or VIN)	County Tag#	Condition of Assets (Working, Non-Working, Unknown)
1	Base/stand for computer monitor	n/a	n/a	Working
1	Automatic stapler Model: 43066	n/a	n/a	Non-Working
1	ALCOTOX Alcohol Tester	A01013	n/a	Non-Working
1	Emerson VCR Model: VCR885	312-9Z10954	b/c #00666	Non-Working
1	Sanyo VCR Model: VWM-690	27571865	b/c #00665	Non-Working

Parties involved:

FROM (Transferor Department): 560 L.E./Training

Transferor - Elected Official/Department Head/

Authorized Staff:

Contact Person:

L.C. Marshall

Patricia Amlson 6.18.09

Print Name

Print Name

Signature

Date +1 (512) 943-1349
Phone Number

TO (Transferee Department/Auction/Trade-in/Donee): Auction

Transferee - Elected Official/Department Head/

Authorized Staff OR Donee - Representative: (If being approved for Sale or Trade-In, no signature is necessary.)

Contact Person:

Print Name

Print Name

Signature

Date Phone Number

* If the above asset(s) is (are) listed for sale at auction and no bids are made, the Purchasing Director may dispose of or donate this (these) asset(s). A list of the (these) asset(s) to be donated or disposed of will be sent to the Auditor's Office with a date of donation or disposal.

Forward to County Auditor's Office

This Change Status was approved as agenda item # _____ in Commissioner's Court on _____

If for Sale, the asset(s) was(were) delivered to warehouse on _____ by _____

Williamson County

Asset Status Change Form

The following asset(s) is(are) considered for: (select one)

- ☐ TRANSFER bet ween county departments ☐ TRADE-IN for new assets of similar type for the county ☐ DESTRUCTION due to Public Health / Safety
☒ SALE at the earliest auction * ☐ DONATION to a non-county entlty

Asset List:

Quantity	Description (year, make, model, etc.)	Manufacturer ID# (serial, service tag, or VIN)	County Tag#	Condition of Assets (Working, Non-Working, Unknown)
1	Wireless receiver and mouse	1091505-00000	n/a	Unknown
1	Deil mouse	M056L0 sn: 452078644	n/a	Unknown
1	Sharp battery charger	Z12332941E	n/a	Unknown
1	Sharp viewcam videocam w carrier	sn: 303323636	n/a	Unknown
1	plastic gold color eagle flag topper	n/a	n/a	Working

Parties involved:

FROM (Transferor Department): 560 L.E./Training

Transferor - Elected Official/Department Head/

Authorized Staff:

Contact Person:

L.C. Marshall

Patricia Amison 6.18.09

Print Name

Print Name

Signature

Date Phone Number

TO (Transferee Department/Auction/Trade-in/Donee): Auction

Transferee - Elected Official/Department Head/

Authorized Staff OR Donee - Representative: (If being approved for Sale or Trade-in, no signature is necessary.)

Contact Person:

Print Name

Print Name

Signature

Date Phone Number

* If the above asset(s) is (are) listed for sale at auction and no bids are made, the Purchasing Director may dispose of or donate this (these) asset(s). A list of the (these) asset(s) to be donated or disposed of will be sent to the Auditor's Office with a date of donation or disposal.

Forward to County Auditor's Office

This Change Status was approved as agenda Item # _____ in Commissioner's Court on _____

If for Sale, the asset(s) was(were) delivered to warehouse on _____ by _____

Williamson County

Asset Status Change Form

Print Form

The following asset(s) is(are) considered for: (select one)

- ☐ TRANSFER between county departments
 ☐ TRADE-IN for new assets of similar type for the county
 ☐ DESTRUCTION due to Public Health / Safety
☒ SALE at the earliest auction *
 ☐ DONATION to a non-county entity

Asset List:

Quantity	Description (year, make, model, etc.)	Manufacturer ID# (serial, service tag, or VIN)	County Tag#	Condition of Assets (Working, Non-Working, Unknown)
1	2003 Dell computer monitor Model: M782	MY-08G157-47603-329-BTRX	n/a	Non-Working
1	Kustom HR-12 radar gun	AA11379	n/a	Non-Working
2	Audio Video Wireless Distribution Systems Archer Transmitter	5774767 and 8577402	n/a	Non-Working
1	Video converter	n/a	n/a	Non-Working
1	Radio Shack RF Modulator	2241840	n/a	Non-Working

Parties involved:

FROM (Transferor Department): 560 L.E./Training

Transferor - Elected Official/Department Head/

Authorized Staff:

L.C. Marshall

Print Name



Signature

Contact Person:

Patricia Amison 6.18.09

Print Name

+1 (512) 943-1349

Date Phone Number

TO (Transferee Department/Auction/Trade-In/Donee): Auction

Transferee - Elected Official/Department Head/

Authorized Staff OR Donee - Representative: (If being approved for Sale or Trade-In, no signature is necessary.)

Contact Person:

Print Name

Print Name

Signature

Date Phone Number

* If the above asset(s) is (are) listed for sale at auction and no bids are made, the Purchasing Director may dispose of or donate this (these) asset(s). A list of the (these) asset(s) to be donated or disposed of will be sent to the Auditor's Office with a date of donation or disposal.

Forward to County Auditor's Office

This Change Status was approved as agenda item # _____ In Commissioner's Court on _____

If for Sale, the asset(s) was(were) delivered to warehouse on _____ by _____

Williamson County

Asset Status Change Form

The following asset(s) is(are) considered for: (select one)

- ☐ TRANSFER bet ween county departments
 ☐ TRADE-IN for new assets of similar type for the county
 ☐ DESTRUCTION due to Public Health / Safety
☒ SALE at the earliest auction *
 ☐ DONATION to a non-county entity

Asset List:

Quantity	Description (year, make, model, etc.)	Manufacturer ID# (serial, service tag, or VIN)	County Tag#	Condition of Assets (Working, Non-Working, Unknown)
14	Polo shirts (worn,torn,faded,stained)	no id #	no tag #	Non-Working
5	Class B short sleeve shirts (stained,torn,used)	no id #	no tag #	Non-Working
1	Body armor carrier tan (worn,not reusable)	no id #	no tag #	Non-Working
12	Pair duty pants navy w red stripe (worn,torn,stained)	no id #	no tag #	Non-Working
	all insignias have been removed - not suitable for reissue			

Parties involved:

FROM (Transferor Department): 560 Law Enforcement Inventory

Transferor - Elected Official/Department Head/
Authorized Staff:

Contact Person:

L.C. Marshall

Patricia Amison 6.15.09

Print Name

Print Name

Signature

Date Phone Number

TO (Transferee Department/Auction/Trade-in/Donee): Auction

Transferee - Elected Official/Department Head/
Authorized Staff OR Donee - Representative: (If being
approved for Sale or Trade-in, no signature is necessary.)

Contact Person:

Print Name

Print Name

Signature

Date Phone Number

* If the above asset(s) is (are) listed for sale at auction and no bids are made, the Purchasing Director may dispose of or donate this (these) asset(s). A list of the (these) asset(s) to be donated or disposed of will be sent to the Auditor's Office with a date of donation or disposal.

Forward to County Auditor's Office

This Change Status was approved as agenda item # _____ in Commissioner's Court on _____

If for Sale, the asset(s) was(were) delivered to warehouse on _____ by _____

Williamson County

Asset Status Change Form

Print Form

The following asset(s) is(are) considered for: (select one)

☐ TRANSFER bet ween county departments ☐ TRADE-IN for new assets of similar type for the county

☒ SALE at the earliest auction *

☐ DONATION to a non-county entity

☐ DESTRUCTION due to Public Health / Safety

Asset List:

Quantity	Description (year, make, model, etc.)	Manufacturer ID# (serial, service tag, or VIN)	County Tag#	Condition of Assets (Working, Non-Working, Unknown)
20	BDU pants (used, stained, faded)	no id #	no tag #	Non-Working
8	Tactical tan s/s (used, stained, torn)	no id #	no tag #	Non-Working
2	Class B tan shirts (used, stained, faded)	no id #	no tag #	Non-Working
	All insignias have been removed			

Parties involved:

FROM (Transferor Department): 570- Corrections

Transferor - Elected Official/Department Head/

Authorized Staff:

L.C Marshall

Print Name

Signature

Contact Person:

Marla Barraza

Print Name

+1 (152) 194-3132

Date Phone Number

JUN 18 2009

TO (Transferee Department/Auction/Trade-in/Donee):

Transferee - Elected Official/Department Head/

Authorized Staff OR Donee - Representative: (If being approved for Sale or Trade-in, no signature is necessary.)

Contact Person:

Print Name

Print Name

Signature

Date Phone Number

* If the above asset(s) is (are) listed for sale at auction and no bids are made, the Purchasing Director may dispose of or donate this (these) asset(s). A list of the (these) asset(s) to be donated or disposed of will be sent to the Auditor's Office with a date of donation or disposal.

Forward to County Auditor's Office

This Change Status was approved as agenda item # _____ In Commissioner's Court on _____

If for Sale, the asset(s) was(were) delivered to warehouse on _____ by _____

Williamson County

Asset Status Change Form

[Print Form](#)

The following asset(s) is(are) considered for: (select one)

- ☐ TRANSFER bet ween county departments
 ☐ TRADE-IN for new assets of similar type for the county
 ☐ DESTRUCTION due to Public Health / Safety
☒ SALE at the earliest auction *
 ☐ DONATION to a non-county entity

Asset List:

Quantity	Description (year, make, model, etc.)	Manufacturer ID# (serial, service tag, or VIN)	County Tag#	Condition of Assets (Working, Non-Working, Unknown)
1	2003 27" Sharp Television Model # 25R- S100	Serial # 308814164	no tag #	Non-Working

Parties involved:

FROM (Transferor Department): 570- Corrections- Inmate Trust Fund

Transferor - Elected Official/Department Head/

Authorized Staff:

L.C. Marshall

Print Name

Signature

Contact Person:

JUN 18 2009

Maria Barraza

Print Name

+1 (512) 943-1324

Date Phone Number

TO (Transferee Department/Auction/Trade-in/Donee):

Transferee - Elected Official/Department Head/

Authorized Staff OR Donee - Representative: (If being approved for Sale or Trade-in, no signature is necessary.)

Contact Person:

Print Name

Print Name

Signature

Date Phone Number

* If the above asset(s) is (are) listed for sale at auction and no bids are made, the Purchasing Director may dispose of or donate this (these) asset(s). A list of the (these) asset(s) to be donated or disposed of will be sent to the Auditor's Office with a date of donation or disposal.

Forward to County Auditor's Office

This Change Status was approved as agenda Item # _____ In Commissioner's Court on _____

If for Sale, the asset(s) was(were) delivered to warehouse on _____ by _____

Williamson County

Asset Status Change Form

[Print Form](#)

The following asset(s) is(are) considered for: (select one)

- ☐ TRANSFER bet ween county departments
 ☐ TRADE-IN for new assets of similar type for the county
 ☐ DESTRUCTION due to Public Health / Safety
☒ SALE at the earliest auction *
 ☐ DONATION to a non-county entity

Asset List:

Quantity	Description (year, make, model, etc.)	Manufacturer ID# (serial, service tag, or VIN)	County Tag#	Condition of Assets (Working, Non-Working, Unknown)
1	HP deskjet 6127 model: VCVRA-0201	sn: MY3AH3B1BT	no tag #	Non-Working
1	Quick shade instant canopy (canopy torn, cannot mend)	no id #	no tag #	Non-Working
1	HP scanjet 5590 model: FCLSD-0406	sn: CN7B2TR0T1	no tag #	Non-Working

Parties Involved:

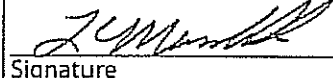
FROM (Transferor Department): 560 Law Enforcement Inventory

Transferor - Elected Official/Department Head/

Authorized Staff:

L.C. Marshall

Print Name



Signature

Contact Person:

Patricia Amison 6.17.09

Print Name

+1 (512) 943-1349

Date Phone Number

TO (Transferee Department/Auction/Trade-in/Donee): AUCTION

Transferee - Elected Official/Department Head/

Authorized Staff OR Donee - Representative: (If being approved for Sale or Trade-in, no signature is necessary.)

Contact Person:

Print Name

Print Name

Signature

Date Phone Number

* If the above asset(s) is (are) listed for sale at auction and no bids are made, the Purchasing Director may dispose of or donate this (these) asset(s). A list of the (these) asset(s) to be donated or disposed of will be sent to the Auditor's Office with a date of donation or disposal.

Forward to County Auditor's Office

This Change Status was approved as agenda item # _____ In Commissioner's Court on _____

If for Sale, the asset(s) was(were) delivered to warehouse on _____ by _____

Williamson County

Asset Status Change Form

[Print Form](#)
The following asset(s) is(are) considered for: (select one)

- ☐ TRANSFER bet ween county departments
 ☐ TRADE-IN for new assets of similar type for the county
 ☐ DESTRUCTION due to Public Health / Safety
☒ SALE at the earliest auction *
 ☐ DONATION to a non-county entity

Asset List:

Quantity	Description (year, make, model, etc.)	Manufacturer ID# (serial, service tag, or VIN)	County Tag#	Condition of Assets (Working, Non-Working, Unknown)
1	Victor 1220-4 Calculator			Non-Working
1	Palm T/X Handheld Device	PN70UAJ6V057		Non-Working
1	Palm T/X Handheld Device	PN70UAJ6V01K		Non-Working

Parties involved:
FROM (Transferor Department): Mobile Outreach
**Transferor - Elected Official/Department Head/
Authorized Staff:**
Contact Person:

Annie Burwell

Jeanne Williby

Print Name

Print Name

Signature

Date Phone Number

TO (Transferee Department/Auction/Trade-in/Donee):

**Transferee - Elected Official/Department Head/
Authorized Staff OR Donee - Representative:** (If being
approved for Sale or Trade-in, no signature is necessary.)

Contact Person:

Print Name

Print Name

Signature

Date Phone Number

* If the above asset(s) is (are) listed for sale at auction and no bids are made, the Purchasing Director may dispose of or donate this (these) asset(s). A list of the (these) asset(s) to be donated or disposed of will be sent to the Auditor's Office with a date of donation or disposal.

Forward to County Auditor's Office

This Change Status was approved as agenda item # _____ in Commissioner's Court on _____

If for Sale, the asset(s) was(were) delivered to warehouse on _____ by _____

Williamson County

Asset Status Change Form

[Print Form](#)
The following asset(s) is(are) considered for: (select one)

- ☐ TRANSFER bet ween county departments
 ☐ TRADE-IN for new assets of similar type for the county
 ☐ DESTRUCTION due to Public Health / Safety
☒ SALE at the earliest auction *
 ☐ DONATION to a non-county entity

Asset List:

Quantity	Description (year, make, model, etc.)	Manufacturer ID# (serial, service tag, or VIN)	County Tag#	Condition of Assets (Working, Non-Working, Unknown)
1	Canon Power Shot A520 Camera	0929108980	01098	Non-Working
1	Olympus digital voice recorder WS-100	100150185	none	Non-Working

Parties involved:
FROM (Transferor Department): 560 LE. - CID

**Transferor - Elected Official/Department Head/
Authorized Staff:**

 Captain Richard Blake
 Print Name

Contact Person:

 Patricia Amison
 Print Name

 June 11, 2009 +1 (512) 943-1345
 Date Phone Number

Signature

TO (Transferee Department/Auction/Trade-in/Donee):

**Transferee - Elected Official/Department Head/
Authorized Staff OR Donee - Representative:** (If being
approved for Sale or Trade-in, no signature is necessary.)

 P
 Print Name

Contact Person:

Print Name

Signature

Date Phone Number

* If the above asset(s) is (are) listed for sale at auction and no bids are made, the Purchasing Director may dispose of or donate this (these) asset(s). A list of the (these) asset(s) to be donated or disposed of will be sent to the Auditor's Office with a date of donation or disposal.

Forward to County Auditor's Office

This Change Status was approved as agenda item # _____ in Commissioner's Court on _____

If for Sale, the asset(s) was(were) delivered to warehouse on _____ by _____

Williamson County

Asset Status Change Form

Print Form

The following asset(s) is(are) considered for: (select one)

☐ TRANSFER bet ween county departments ☐ TRADE-IN for new assets of similar type for the county

☒ SALE at the earliest auction *

☐ DONATION to a non-county entity

☐ DESTRUCTION due to Public Health / Safety

Asset List:

Quantity	Description (year, make, model, etc.)	Manufacturer ID# (serial, service tag, or VIN)	County Tag#	Condition of Assets (Working, Non-Working, Unknown)
53	Class B short sleeve shirts (stained, torn, used, faded)	no id #	no tag #	Non-Working
49	Class A long sleeve shirts (stained, torn, used)	no id #	no tag #	Non-Working
1	BDU long sleeve camo shirt (faded, used)	no id #	no tag #	Non-Working
3	BDU pants (faded, torn, used)	no id #	no tag #	Non-Working
*all insignias have been removed - unsuitable for reissue				

Parties involved:

FROM (Transferor Department): 560 - LAW ENFORCEMENT INVENTORY

Transferor - Elected Official/Department Head/

Authorized Staff:

Contact Person:

L.C. MARSHALL

Patricia Amison 6.12.09

Print Name

Print Name

L.C. Marshall

6-15-09

+1 (512) 943-1349

Signature

Date Phone Number

TO (Transferee Department/Auction/Trade-in/Donee): AUCTION

Transferee - Elected Official/Department Head/

Authorized Staff OR Donee - Representative: (If being approved for Sale or Trade-in, no signature is necessary.)

Contact Person:

Print Name

Print Name

Signature

Date Phone Number

* If the above asset(s) is (are) listed for sale at auction and no bids are made, the Purchasing Director may dispose of or donate this (these) asset(s). A list of the (these) asset(s) to be donated or disposed of will be sent to the Auditor's Office with a date of donation or disposal.

Forward to County Auditor's Office

This Change Status was approved as agenda Item # _____ in Commissioner's Court on _____

If for Sale, the asset(s) was(were) delivered to warehouse on _____ by _____

Williamson County

Asset Status Change Form

Print Form

The following asset(s) is(are) considered for: (select one)

- ☐ TRANSFER bet ween county departments
 ☐ TRADE-IN for new assets of similar type for the county
 ☐ DESTRUCTION due to Public Health / Safety
☒ SALE at the earliest auction *
 ☐ DONATION to a non-county entity

Asset List:

Quantity	Description (year, make, model, etc.)	Manufacturer ID# (serial, service tag, or VIN)	County Tag#	Condition of Assets (Working, Non-Working, Unknown)
12	S/S clerk shirts (stained, torn, used)	no id #	no tag #	Non-Working
21	Tactical tan shirts s/s (worn, faded, stained)	no id #	no tag #	Non-Working
5	Tactical white shirts s/s (faded, stained, torn)	no id #	no tag #	Non-Working
3	Class A pants (stained, torn)	no id #	no tag #	Non-Working
All insignias have been removed Pg 3 of 4				

Parties involved:

FROM (Transferor Department): 570 Correction Inventory

Transferor - Elected Official/Department Head/

Authorized Staff:

Contact Person:

JUN 15 2009

L.C. Marshall

Print Name

Maria Barraza

Print Name

24 Marshall

Signature

6-15-09

Date

512 943-1324

Phone Number

TO (Transferee Department/Auction/Trade-in/Donee):

Transferee - Elected Official/Department Head/

Authorized Staff OR Donee - Representative: (If being approved for Sale or Trade-in, no signature is necessary.)

Contact Person:

Print Name

Print Name

Signature

Date

Phone Number

* If the above asset(s) is (are) listed for sale at auction and no bids are made, the Purchasing Director may dispose of or donate this (these) asset(s). A list of the (these) asset(s) to be donated or disposed of will be sent to the Auditor's Office with a date of donation or disposal.

Forward to County Auditor's Office

This Change Status was approved as agenda item # _____ in Commissioner's Court on _____

If for Sale, the asset(s) was(were) delivered to warehouse on _____ by _____

Williamson County

Asset Status Change Form

Print Form

The following asset(s) is(are) considered for: (select one)

- ☐ TRANSFER bet ween county departments
 ☐ TRADE-IN for new assets of similar type for the county
 ☐ DESTRUCTION due to Public Health / Safety
☒ SALE at the earliest auction *
 ☐ DONATION to a non-county entity

Asset List:

Quantity	Description (year, make, model, etc.)	Manufacturer ID# (serial, service tag, or VIN)	County Tag#	Condition of Assets (Working, Non-Working, Unknown)
2	Baseball Caps (faded, torn)	no id #	no tag #	Non-Working
1	Winter jacket (stained)	no id #	no tag #	Non-Working
	All insignias have been removed Pg 4 of 4			

Parties involved:

FROM (Transferor Department): 570 Correction Inventory

Transferor - Elected Official/Department Head/

Authorized Staff:

Contact Person:

JUN 15 2009

L.C. Marshall

Maria Barraza

Print Name

Print Name

L.C. Marshall

6-15-09

+1 (512) 943-1324

Signature

Date Phone Number

TO (Transferee Department/Auction/Trade-In/Donee):

Transferee - Elected Official/Department Head/

Authorized Staff OR Donee - Representative: (If being approved for Sale or Trade-In, no signature is necessary.)

Contact Person:

Print Name

Print Name

Signature

Date Phone Number

* If the above asset(s) is (are) listed for sale at auction and no bids are made, the Purchasing Director may dispose of or donate this (these) asset(s). A list of the (these) asset(s) to be donated or disposed of will be sent to the Auditor's Office with a date of donation or disposal.

Forward to County Auditor's Office

This Change Status was approved as agenda Item # _____ In Commissioner's Court on _____

If for Sale, the asset(s) was(were) delivered to warehouse on _____ by _____

Williamson County

Asset Status Change Form

The following asset(s) is(are) considered for: (select one)

- ☐ TRANSFER bet ween county departments
 ☐ TRADE-IN for new assets of similar type for the county
 ☐ DESTRUCTION due to Public Health / Safety
☒ SALE at the earliest auction *
 ☐ DONATION to a non-county entity

Asset List:

Quantity	Description (year, make, model, etc.)	Manufacturer ID# (serial, service tag, or VIN)	County Tag#	Condition of Assets (Working, Non-Working, Unknown)
3	Class B s/s shirts (stained, torn, used)	no id #	no tag #	Non-Working
4	Polo shirts (worn, faded, stained)	no id #	no tag #	Non-Working
1	2007 Durabrand Television Model # DTV 1307	no id #	no tag #	Non-Working
23	BDU pants (used, stained, faded, torn)	no id #	no tag #	Non-Working
All insignias have been removed Pg 2 of 4				

Parties involved:

FROM (Transferor Department): 570 Correction Inventory

Transferor - Elected Official/Department Head/

Authorized Staff:

Contact Person:

JUN 15 2009

L.C. Marshall

Maria Barraza

Print Name

Print Name

JC Marshall

6-15-09

(512) 943-1324

Signature

Date Phone Number

TO (Transferee Department/Auction/Trade-in/Donor):

Transferee - Elected Official/Department Head/

Authorized Staff OR Donor - Representative: (If being approved for Sale or Trade-in, no signature is necessary.)

Contact Person:

Print Name

Print Name

Signature

Date Phone Number

* If the above asset(s) is (are) listed for sale at auction and no bids are made, the Purchasing Director may dispose of or donate this (these) asset(s). A list of the (these) asset(s) to be donated or disposed of will be sent to the Auditor's Office with a date of donation or disposal.

Forward to County Auditor's Office

This Change Status was approved as agenda item # _____ in Commissioner's Court on _____

If for Sale, the asset(s) was(were) delivered to warehouse on _____ by _____

Williamson County

Asset Status Change Form

Print Form

The following asset(s) is(are) considered for: (select one)

☐ TRANSFER bet ween county departments ☐ TRADE-IN for new assets of similar type for the county

☒ SALE at the earliest auction *

☐ DONATION to a non-county entity

☐ DESTRUCTION due to
Public Health / Safety

Asset List:

Quantity	Description (year, make, model, etc.)	Manufacturer ID# (serial, service tag, or VIN)	County Tag#	Condition of Assets (Working, Non-Working, Unknown)
9	Pair BDU pants (worn, faded, torn)	no id #	no tag#	Non-Working
4	Tactical white shirts s/s (worn, stained, torn)	no id #	no tag #	Non-Working
1	Baseball caps (stained)	no id #	no tag #	Non-Working
3	Tactical tan shirts s/s (worn, stained, torn)	no id #	no tag #	Non-Working
	All Insignias have been removed. Pg1 of 4	no id #	no tag	Non-Working

Parties involved:

FROM (Transferor Department): 570 Correction Inventory

Transferor - Elected Official/Department Head/

Authorized Staff:

L.C. Marshall

Print Name

Contact Person:

Maria Barraza

Print Name

JUN 15 2009

Signature

Date 6-15-09 Phone Number (512) 943-1324

TO (Transferee Department/Auction/Trade-in/Donee):

Transferee - Elected Official/Department Head/

Authorized Staff OR Donee - Representative: (If being
approved for Sale or Trade-in, no signature is necessary.)

Contact Person:

Print Name

Print Name

Signature

Date Phone Number

* If the above asset(s) is (are) listed for sale at auction and no bids are made, the Purchasing Director may dispose of or donate this (these) asset(s). A list of the (these) asset(s) to be donated or disposed of will be sent to the Auditor's Office with a date of donation or disposal.

Forward to County Auditor's Office

This Change Status was approved as agenda item # _____ in Commissioner's Court on _____

If for Sale, the asset(s) was(were) delivered to warehouse on _____ by _____

Williamson County

Asset Status Change Form

Print Form

The following asset(s) is(are) considered for: (select one)

- ☒ TRANSFER bet ween county departments
 ☐ TRADE-IN for new assets of similar type for the county
 ☐ DESTRUCTION due to Public Health / Safety
☐ SALE at the earliest auction *
 ☐ DONATION to a non-county entity

Asset List:

Quantity	Description (year, make, model, etc.)	Manufacturer ID# (serial, service tag, or VIN)	County Tag#	Condition of Assets (Working, Non-Working, Unknown)
1	ViewSonic N4285p - 42" LCD TV	QUM082110597		Working

Parties involved:**FROM** (Transferor Department): MOBILE OUTREACH
**Transferor - Elected Official/Department Head/
Authorized Staff:**

ANNIE BURWELL

Print Name



Signature

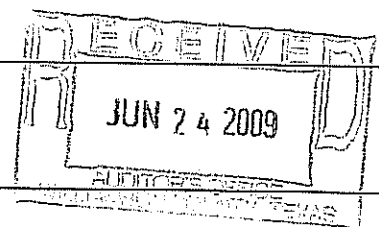
Contact Person:

JEANNE WILLIBY

Print Name

943-3588

Date Phone Number

**TO** (Transferee Department/Auction/Trade-in/Donee): SHERIFF'S OFFICE
**Transferee - Elected Official/Department Head/
Authorized Staff OR Donee - Representative:** (If being
approved for Sale or Trade-in, no signature is necessary.)

Lt. James D. Carnow

Print Name



Signature

Contact Person:

Print Name

943-1326

Date Phone Number

* If the above asset(s) is (are) listed for sale at auction and no bids are made, the Purchasing Director may dispose of or donate this (these) asset(s). A list of the (these) asset(s) to be donated or disposed of will be sent to the Auditor's Office with a date of donation or disposal.

Forward to County Auditor's Office

This Change Status was approved as agenda item # _____ in Commissioner's Court on _____

If for Sale, the asset(s) was(were) delivered to warehouse on _____ by _____

Williamson County

Asset Status Change Form

Print Form

The following asset(s) is(are) considered for: (select one)

☒ TRANSFER bet ween county departments ☐ TRADE-IN for new assets of similar type for the county

☐ SALE at the earliest auction *

☐ DONATION to a non-county entity

☐ DESTRUCTION due to
Public Health / Safety

Asset List:

Quantity	Description (year, make, model, etc.)	Manufacturer ID# (serial, service tag, or VIN)	County Tag#	Condition of Assets (Working, Non- Working, Unknown)
1	DELL XFR0630 COMPUTER	G8R4HH1		Working

Parties Involved:

FROM (Transferor Department): MOBILE OUTREACH

**Transferor - Elected Official/Department Head/
Authorized Staff:**

ANNIE BURWELL

Print Name

Signature

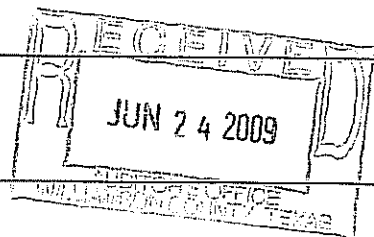
Contact Person:

JEANNE WILLIBY

Print Name

943-3588

Date Phone Number



TO (Transferee Department/Auction/Trade-in/Donor): SHERIFF'S OFFICE

**Transferee - Elected Official/Department Head/
Authorized Staff OR Donor - Representative:** (If being

approved for Sale or Trade-in, no signature is necessary.)

Contact Person:

Print Name

Signature

Print Name

943-7326

Date Phone Number

* If the above asset(s) is (are) listed for sale at auction and no bids are made, the Purchasing Director may dispose of or donate this (these) asset(s). A list of the (these) asset(s) to be donated or disposed of will be sent to the Auditor's Office with a date of donation or disposal.

Forward to County Auditor's Office

This Change Status was approved as agenda item # _____ in Commissioner's Court on _____

If for Sale, the asset(s) was(were) delivered to warehouse on _____ by _____

Williamson County

Asset Status Change Form

Print Form

The following asset(s) is(are) considered for: (select one)

- ☒ TRANSFER bet ween county departments
 ☐ TRADE-IN for new assets of similar type for the county
 ☐ DESTRUCTION due to Public Health / Safety
☐ SALE at the earliest auction *
 ☐ DONATION to a non-county entity

Asset List:

Quantity	Description (year, make, model, etc.)	Manufacturer ID# (serial, service tag, or VIN)	County Tag #	Condition of Assets (Working, Non-Working, Unknown)
1	Canon Faxphone L170	SPN 499b3		Working

Parties involved:

FROM (Transferor Department): Mobile Outreach

**Transferor - Elected Official/Department Head/
Authorized Staff:**

Annie Burwell

Print Name

Signature

Contact Person:

Jeanne Williby

Print Name

943-3588

Date Phone Number

TO (Transferee Department/Auction/Trade-in/Donee): County Attorney's Office

**Transferee - Elected Official/Department Head/
Authorized Staff OR Donee - Representative:** (If being
approved for Sale or Trade-in, no signature is necessary.)

JANA DUTY

Print Name

Signature

Contact Person:

VICKI VICKERS

Print Name

X 1112

Date Phone Number

June 16, 2009

Date

* If the above asset(s) is (are) listed for sale at auction and no bids are made, the Purchasing Director may dispose of or donate this (these) asset(s). A list of the (these) asset(s) to be donated or disposed of will be sent to the Auditor's Office with a date of donation or disposal.

Forward to County Auditor's Office

This Change Status was approved as agenda item # _____ in Commissioner's Court on _____

If for Sale, the asset(s) was(were) delivered to warehouse on _____ by _____

Williamson County Vehicle Retirement Form

Identify Vehicle:

1GNEC13Z12J329016 5206
Vehicle Identification Number Door Number

841165 2002 CHEVROLET TAHOE WHITE
License Plate Number Year Make Model Color

Driver Assigned to Vehicle 552
Department

Reason for Retirement:

- ☒ Accident: Attach a Damage to County Property Incident Property Incident Report or the Official Accident Report
- ☐ High Mileage: List actual mileage 91,617
- ☐ Not mechanically sound
- ☐ Other: Explain

Method of Retirement: This vehicle is to be considered for: (Select one)

- ☒ **SALE** at the earliest auction
- ☐ **TRADE-IN** for new assets for the county
- ☐ **DONATION** to a non-county entity
- ☐ **SALVAGE** for parts

Elected Official/Department Head/Authorized Staff

Date 6, 15, 09

Print Dale Vannoy RANDOLPH DOYER Signature Randolph Doyer for Dale Vannoy

Forward to Fleet Services Manager - Mike Fox

For Fleet Services Use Only

- ☐ Authorized Litigation & Insurance Release Form obtained
- ☐ Vehicle Marked for Auction and moved to Auction Yard
- ☒ Forward forms and reports to County Auditor's Office

Print Mike Fox

Signature

Date

6, 4, 09



Texas Association of Counties
County Government Risk Management Pool

Automobile Liability Loss Report

Member: Williamson County Control No.: _____
Address: 301 SE Inner Loop^{SE} 108 City: Georgetown State: TX Zipcode: 78626
Contact Person: Joyce Nemecek
Telephone Number: 512-943-1532
Date of Incident: 3-27-09 Time of Incident: 12:22pm
Location: W South St & Katherine Way, Leander, TX
Description: see attached police rpt

MEMBER VEHICLE

1GNEC132123329016
Year: 02 Make: Chev Model: Tahoe VIN # _____ Damage: RFA, hood, wheel
Member Driver: Richard Cotten Department: Const 2-552
Telephone No: 512-260-4210
Address: 350 Discovery Blvd City: Cedar Park State: TX Zipcode: 78613

PROPERTY DAMAGE

Year: 01 Make: Ford Model: F-350 Damage: 1-FR-4
Lienholder: _____

Other Driver's Name: Doyle W. Bonnet Telephone No: 512-517-4214
Address: 24400 Sheephollow Trail City: Leander State: TX Zipcode: 78641

Other Owner's Name (if different than driver): _____ Telephone No: _____
Address: _____ City: _____ State: TX Zipcode: _____

Injured Parties Name: _____ Telephone No: _____
Address: _____ City: _____ State: TX Zipcode: _____

Witness Name: _____ Telephone No: _____
Address: _____ City: _____ State: TX Zipcode: _____

Other Information: _____

Reported by: Ross Brown Reported to: Joyce Nemecek Date: 4-3-09



WILLIAMSON COUNTY

FLEET INCIDENT / CRASH / VANDALISM REPORT

(Page 2 of 3)

Were Any Personal Injuries Sustained by Parties Involved? ☐ Yes / ☒ No

If YES,
Describe:

Were Any Pictures Taken? ☐ Yes / ☒ No

Investigating Officer's Name on Scene C.R. HAUCK

Investigating Officer's Department: DPS HP

General Description of Incident / Crash / Vandalism: Driver of Unit #1 was driving West on W. South Street and Driver of Unit #2 was driving East on W. South Street. Unit #1 failed to Yield Right of Way turning left to Unit #2 and attempted to turn in front of Unit #2 onto Katherine Way. Unit #2's front right struck Unit #1's right front quarter, disabling both vehicles.

General Description of vehicle / equipment damage: Right front quarter, hood and wheel area.

Remarks:

Is / Will the vehicle be out of service due to incident? ☒ Yes / ☐ No

Location of the Vehicle: Cedar Park Body & Frame, Cedar Park, TX

Prepared by: Ross Brown

Title: SGT

Date: 04/03/09

-----BELOW FOR FLEET SERVICE USE -----

Date in shop:

Date out of shop:

Repair cost: \$

Prepared by / Title



WILLIAMSON COUNTY
FLEET INCIDENT / CRASH / VANDALISM REPORT
(Page 3 of 3)

MULTIPLE VEHICLE INCIDENTS / CRASHES:

OTHER VEHICLE INVOLVED (vehicle # 3)

Driver's Name of Vehicle # 3: _____

Driver's License # of Vehicle # 3: _____

Insurance Company of Vehicle # 3: _____

Insurance Policy #: _____

Address of Other Driver: _____

Phone of Other Driver: _____

Number of Passengers in Other Vehicle _____

Approximate Ages of Passengers _____

Type of Vehicle: _____ Model: _____ License #: _____

OTHER VEHICLE INVOLVED (vehicle # 4)

Driver's Name of Vehicle # 4: _____

Driver's License # of Vehicle # 4: _____

Insurance Company of Vehicle # 4: _____

Insurance Policy #: _____

Address of Other Driver: _____

Phone of Other Driver: _____

Number of Passengers in Other Vehicle _____

Approximate Ages of Passengers _____

Type of Vehicle: _____ Model: _____ License #: _____

If more than 4 vehicles were involved, continue with this information on the back of this page or a separate attachment.

☐ FATAL ☐ CMV INVOLVED ☐ SCHOOL BUS RELATED ☐ RAILROAD RELATED ☐ MEDICAL ADVISORY BOARD ☐ HIT AND RUN ☐ AMENDMENT / SUPPLEMENT



Texas Peace Officer's Crash Report

Submission of Crash Records: This report may be submitted via the CRIS Web Portal, electronically submitted via XML, or by mailing to the Texas Department of Transportation, Crash Records, PO Box 149349, Austin, TX 78714
Questions? Call: 512/486-5780

Form CR-3
(Rev. 03/00)
(03 D-EPC)

PAGE 1 OF 2

PLACE WHERE CRASH OCCURRED		COUNTY <u>WILLIAMSON</u> CITY OR TOWN <u>LEANDER</u>		LOC#	CR# <u>TX2460000</u>
IF CRASH WAS OUTSIDE CITY LIMITS INDICATE FROM NEAREST TOWN		MILES <input type="checkbox"/> N <input type="checkbox"/> S <input type="checkbox"/> E <input type="checkbox"/> W OF		TxDOT #	
ROAD ON WHICH CRASH OCCURRED		BLOCK NUMBER <u>WEST SOUTH ST.</u> STREET OR ROAD NAME		CONSTRUCTION ZONE WORKERS PRESENT	<input type="checkbox"/> YES <input checked="" type="checkbox"/> NO SPEED LIMIT <u>30</u>
INTERSECTING STREET OR RAILING NUMBER		BLOCK NUMBER <u>KATHERINE WAY</u> STREET OR ROAD NAME		CONSTRUCTION ZONE WORKERS PRESENT	<input type="checkbox"/> YES <input checked="" type="checkbox"/> NO SPEED LIMIT <u>30</u>
NOT AT INTERSECTION		<input type="checkbox"/> FT. <input type="checkbox"/> N <input type="checkbox"/> S <input type="checkbox"/> E <input type="checkbox"/> W OF		MILEPOST	LATITUDE <u>30.57427</u>
					LONGITUDE <u>-97.86632</u>
DATE OF CRASH		MARCH 27 2009 DAY OF WEEK <u>FRIDAY</u> HOUR <u>12:22</u>		<input type="checkbox"/> AM <input checked="" type="checkbox"/> PM	
UNIT # <u>1</u>	1-MOTOR VEHICLE 2-TRAIN 3-PEDALCYCLIST	4-PEDESTRIAN 5-MOTORIZED CONVEYANCE 6-TOWED	7-NON-CONTACT 8-OTHER	VIN# <u>1GNEC13Z12J329016</u>	ALTERED VEHICLE HEIGHT <input type="checkbox"/> YES <input checked="" type="checkbox"/> NO
YEAR MODEL <u>2002</u>	COLOR & MAKE <u>BLACK/WHITE CHEVROLET</u>	MODEL NAME <u>TAHOE</u>	BODY STYLE <u>SUV</u>	LICENSE PLATE <u>09 TX 841-165</u>	
DRIVER'S NAME <u>COFFMAN RICHARD T</u>		<u>350 DISCOVERY BLVD., CEDAR PARK, TX 78613</u>		<u>512-260-4210</u>	
DRIVER'S LICENSE <u>TX</u>	<u>14628284</u>	<u>C</u>	<u>N/A</u>	<u>A</u>	<u>11/6/49</u>
DRIVER'S ETHNICITY <u>1</u>	1-WHITE 2-HISPANIC 3-BLACK	4-ASIAN 5-OTHER	DRIVER'S SEX <input checked="" type="checkbox"/> MALE <input type="checkbox"/> FEMALE	DRIVER'S OCCUPATION <u>PEACE OFFICER</u>	POLICE, FIREFIGHTER, EMB, OR EMERGENCY <input type="checkbox"/> IF CHECKED, PLEASE EXPLAIN IN REMARKS
TYPE OF ALCOHOL SPECIMEN TAKEN		TEST RESULTS <u>4</u>		TYPE OF DRUG SPECIMEN TAKEN	
1-BREATH 2-BLOOD 3-URINE 4-NONE 5-REFUSED				1-BLOOD 2-URINE 3-NONE 4-REFUSED	
TEST RESULTS <u>4</u>				TEST RESULTS <u>3</u>	
DRUG CATEGORY <u>1</u>				DRUG CATEGORY <u>2</u>	
<input type="checkbox"/> LESSEE <input checked="" type="checkbox"/> OWNER		<u>WILLIAMSON COUNTY, CONSTABLE OFFICE #2</u>		<u>350 DISCOVERY BLVD., CEDAR PARK, TX 78613</u>	
LIABILITY INSURANCE		<input type="checkbox"/> YES <input checked="" type="checkbox"/> NO <input type="checkbox"/> EXP		<u>EXEMPT - GOVERNMENT OWNED</u>	
		INSURANCE COMPANY		VEHICLE DAMAGE RATING <u>2-RQ-6</u>	
UNIT # <u>2</u>	1-MOTOR VEHICLE 2-TRAIN 3-PEDALCYCLIST	4-PEDESTRIAN 5-MOTORIZED CONVEYANCE 6-TOWED	7-NON-CONTACT 8-OTHER	VIN# <u>1FTSW31F41EB41928</u>	ALTERED VEHICLE HEIGHT <input type="checkbox"/> YES <input checked="" type="checkbox"/> NO
YEAR MODEL <u>2001</u>	COLOR & MAKE <u>BLACK FORD</u>	MODEL NAME <u>F-350</u>	BODY STYLE <u>PU</u>	LICENSE PLATE <u>09 TX 7ZL-C96</u>	
DRIVER'S NAME <u>BONNET DOYLE W</u>		<u>24400 SHEEPHOLLOW TRL, LEANDER, TX 78641</u>		<u>512-517-4214</u>	
DRIVER'S LICENSE <u>TX</u>	<u>07261445</u>	<u>C</u>	<u>N/A</u>	<u>N/A</u>	<u>9/19/52</u>
DRIVER'S ETHNICITY <u>1</u>	1-WHITE 2-HISPANIC 3-BLACK	4-ASIAN 5-OTHER	DRIVER'S SEX <input checked="" type="checkbox"/> MALE <input type="checkbox"/> FEMALE	DRIVER'S OCCUPATION <u>OTHER</u>	POLICE, FIREFIGHTER, EMB, OR EMERGENCY <input type="checkbox"/> IF CHECKED, PLEASE EXPLAIN IN REMARKS
TYPE OF ALCOHOL SPECIMEN TAKEN		TEST RESULTS <u>4</u>		TYPE OF DRUG SPECIMEN TAKEN	
1-BREATH 2-BLOOD 3-URINE 4-NONE 5-REFUSED				1-BLOOD 2-URINE 3-NONE 4-REFUSED	
TEST RESULTS <u>4</u>				TEST RESULTS <u>3</u>	
DRUG CATEGORY <u>1</u>				DRUG CATEGORY <u>2</u>	
<input type="checkbox"/> LESSEE <input checked="" type="checkbox"/> OWNER		<u>BONNET, DOYLE W.</u>		<u>24400 SHEEPHOLLOW TRL, LEANDER, TX 78641</u>	
LIABILITY INSURANCE		<input type="checkbox"/> YES <input checked="" type="checkbox"/> NO <input type="checkbox"/> EXP		<u>FARMERS (800) 987-3798</u>	
		INSURANCE COMPANY		VEHICLE DAMAGE RATING <u>1-FR-4</u>	
DAMAGE TO PROPERTY OTHER THAN VEHICLES <u>NONE</u>					
OBJECTS					
NAME AND ADDRESS OF OWNER					
FEET FROM CURB					
DAMAGE ESTIMATE					
IN YOUR OPINION, DID THIS CRASH RESULT IN AT LEAST \$1,000.00 DAMAGE TO ANY ONE PERSON'S PROPERTY? <input checked="" type="checkbox"/> YES <input type="checkbox"/> NO					
CHARGES FILED					
NAME					
CHARGE					
CITATION#					
NAME					
CHARGE					
CITATION#					
TIME NOTIFIED OF CRASH <u>3/27/09</u>	<u>12:25 PM</u>	HOW <u>DISPATCHED</u>	TIME ARRIVED AT SCENE <u>3/27/09</u>	<u>12:59 PM</u>	DATE OF REPORT <u>3/27/09</u>
TYPED OR PRINTED					
C. D. HAIK					
11846					
TYNDC - LD					
REPORT <input checked="" type="checkbox"/> YES <input type="checkbox"/> NO					

[illegible][illegible][illegible]

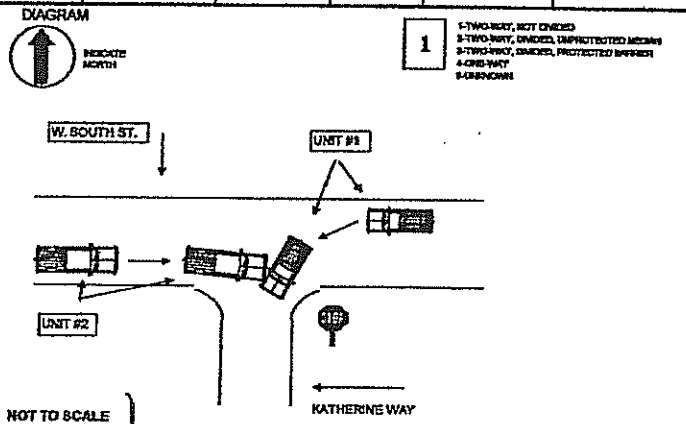
DISPOSITION OF KILLED OR INJURED			IF AMBULANCE USED, SHOW				
ITEMS	TAKEN TO	BY	TIME NOTIFIED	TIME ARRIVED AT SCENE	AMBULANCE UNIT	# OF ATTENDANTS INCLUDING DRIVER	# OF PERSONS TRANSPORTED FOR TREATMENT

[illegible]

WITNESSES:

FACTORS AND CONDITIONS LISTED ARE THE INVESTIGATOR'S OPINION											
UNITS	FACTORS/CONDITIONS CONTRIBUTED			OTHER FACTORS/CONDITIONS MAY OR MAY NOT HAVE CONTRIBUTED			VEHICLE DEFECTS CONTRIBUTED		VEHICLE DEFECTS MAY HAVE CONTRIBUTED		
1	1	37	3	3	1	2	3	1	2	1	2
2	1		2	3	1	2	3	1	2	1	2

1-ARRIVAL ON ROAD/DOWNG
2-ARRIVAL ON ROAD/WAY
3-ARRIVED WITHOUT AFFECT
4-ARRIVED LANE/IN LANE/IN
5-AS NO VEHICLE DEFECTIVE
6-ARRIVED IN TRAFFIC/LANE
7-ARRIVED/STOP AND ON SIGNAL
8-ARRIVED/STOP DOWN ON LIGHT
9-ARRIVED/STOP TURN/ARRIVED AT INTERSECTION
10-ARRIVED/STOP/ARRIVED FROM AT CONSTRUCTION
11-ARRIVED/STOP/IN VEHICLE
12-ARRIVED/STOP/IN VEHICLE
13-ARRIVED/STOP/IN VEHICLE
14-ARRIVED/STOP/IN VEHICLE
15-ARRIVED/STOP/IN VEHICLE
16-ARRIVED/STOP/IN VEHICLE
17-ARRIVED/STOP/IN VEHICLE
18-ARRIVED/STOP/IN VEHICLE
19-ARRIVED/STOP/IN VEHICLE
20-ARRIVED/STOP/IN VEHICLE
21-ARRIVED/STOP/IN VEHICLE
22-ARRIVED/STOP/IN VEHICLE
23-ARRIVED/STOP/IN VEHICLE
24-ARRIVED/STOP/IN VEHICLE
25-ARRIVED/STOP/IN VEHICLE
26-ARRIVED/STOP/IN VEHICLE
27-ARRIVED/STOP/IN VEHICLE
28-ARRIVED/STOP/IN VEHICLE
29-ARRIVED/STOP/IN VEHICLE
30-ARRIVED/STOP/IN VEHICLE
31-ARRIVED/STOP/IN VEHICLE
32-ARRIVED/STOP/IN VEHICLE
33-ARRIVED/STOP/IN VEHICLE
34-ARRIVED/STOP/IN VEHICLE
35-ARRIVED/STOP/IN VEHICLE
36-ARRIVED/STOP/IN VEHICLE
37-ARRIVED/STOP/IN VEHICLE
38-ARRIVED/STOP/IN VEHICLE
39-ARRIVED/STOP/IN VEHICLE
40-ARRIVED/STOP/IN VEHICLE
41-ARRIVED/STOP/IN VEHICLE
42-ARRIVED/STOP/IN VEHICLE
43-ARRIVED/STOP/IN VEHICLE
44-ARRIVED/STOP/IN VEHICLE
45-ARRIVED/STOP/IN VEHICLE
46-ARRIVED/STOP/IN VEHICLE
47-ARRIVED/STOP/IN VEHICLE
48-ARRIVED/STOP/IN VEHICLE
49-ARRIVED/STOP/IN VEHICLE
50-ARRIVED/STOP/IN VEHICLE
51-ARRIVED/STOP/IN VEHICLE
52-ARRIVED/STOP/IN VEHICLE
53-ARRIVED/STOP/IN VEHICLE
54-ARRIVED/STOP/IN VEHICLE
55-ARRIVED/STOP/IN VEHICLE
56-ARRIVED/STOP/IN VEHICLE
57-ARRIVED/STOP/IN VEHICLE
58-ARRIVED/STOP/IN VEHICLE
59-ARRIVED/STOP/IN VEHICLE
60-ARRIVED/STOP/IN VEHICLE
61-ARRIVED/STOP/IN VEHICLE
62-ARRIVED/STOP/IN VEHICLE
63-ARRIVED/STOP/IN VEHICLE
64-ARRIVED/STOP/IN VEHICLE
65-ARRIVED/STOP/IN VEHICLE
66-ARRIVED/STOP/IN VEHICLE
67-ARRIVED/STOP/IN VEHICLE
68-ARRIVED/STOP/IN VEHICLE
69-ARRIVED/STOP/IN VEHICLE
70-ARRIVED/STOP/IN VEHICLE
71-ARRIVED/STOP/IN VEHICLE
72-ARRIVED/STOP/IN VEHICLE
73-ARRIVED/STOP/IN VEHICLE
74-ARRIVED/STOP/IN VEHICLE
75-ARRIVED/STOP/IN VEHICLE
76-ARRIVED/STOP/IN VEHICLE
77-ARRIVED/STOP/IN VEHICLE
78-ARRIVED/STOP/IN VEHICLE
79-ARRIVED/STOP/IN VEHICLE
80-ARRIVED/STOP/IN VEHICLE
81-ARRIVED/STOP/IN VEHICLE
82-ARRIVED/STOP/IN VEHICLE
83-ARRIVED/STOP/IN VEHICLE
84-ARRIVED/STOP/IN VEHICLE
85-ARRIVED/STOP/IN VEHICLE
86-ARRIVED/STOP/IN VEHICLE
87-ARRIVED/STOP/IN VEHICLE
88-ARRIVED/STOP/IN VEHICLE
89-ARRIVED/STOP/IN VEHICLE
90-ARRIVED/STOP/IN VEHICLE
91-ARRIVED/STOP/IN VEHICLE
92-ARRIVED/STOP/IN VEHICLE
93-ARRIVED/STOP/IN VEHICLE
94-ARRIVED/STOP/IN VEHICLE
95-ARRIVED/STOP/IN VEHICLE
96-ARRIVED/STOP/IN VEHICLE
97-ARRIVED/STOP/IN VEHICLE
98-ARRIVED/STOP/IN VEHICLE
99-ARRIVED/STOP/IN VEHICLE
100-ARRIVED/STOP/IN VEHICLE

[illegible]

Joyce Nemec

From: Joyce Nemec
Sent: Tuesday, April 07, 2009 9:50 AM
To: 'Gloria Bryfogle'
Subject: Fleet Accident
Attachments: 20090407094803321.pdf

Gloria,
Please see the attached fleet, doa 3/27/09, involving our driver Richard Coffman.

Thank you,
Joyce M. Nemec
Risk Coordinator
Williamson County Human Resources
512-943-1532
fax: 512-943-1535

NOTICE OF CONFIDENTIALITY: The information in this communication is confidential and intended only for the exclusive use of the addressee. The copying, distribution, or other use of this communication by the addressee or any other person or entity is prohibited. If you have received this communication by mistake, please notify the sender immediately and destroy all forms of this communication (electronic or paper). Thanks for your cooperation.

-----Original Message-----

From: mp8000@wilco.org [mailto:mp8000@wilco.org]
Sent: Tuesday, April 07, 2009 8:48 AM
To: Joyce Nemec
Subject:

This E-mail was sent from "RNPE5A54B" (Aficio MP 8000).

Scan Date: 04.07.2009 09:48:03 (-0400)
Queries to: mp8000@wilco.org