

Hines Ranches

Preliminary Plat

Preliminary Plat

A hand-drawn diagram of a cell. It features a large, irregular outer boundary representing the cell membrane. Inside, there is a smaller, roughly circular nucleus. Surrounding the nucleus is a network of lines representing the rough endoplasmic reticulum. The diagram is drawn in blue ink on a white background.

BLOCK

Reference	Q1's	Estates
Q28.	27	2777

$\begin{pmatrix} 1 & 0 & 0 \\ 0 & 1 & 0 \\ 0 & 0 & 1 \end{pmatrix}$

as. M. Cairnes et ux
4455 Hwy. 138
Lorence, Texas 76527

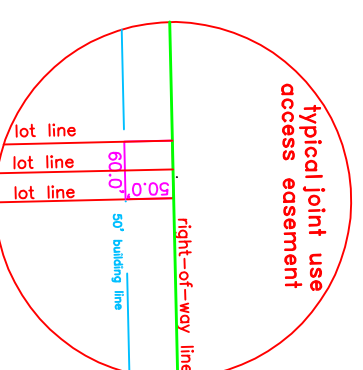
~~W.J. Handsel
430 Cr. #221
ence, Texas 76527~~

$\begin{matrix} \text{---} \\ \text{---} \end{matrix}$

SCALE 1" = 200'
bearing basis Grid North

bearing basis Grid North

All lots must take access through joint use access easements at points indicated by star ★ symbol



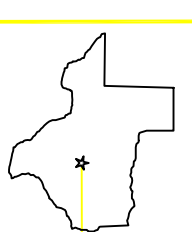
A diagram showing a line with a gap. The line is red and has a shaded gap in the middle. The gap is filled with a diagonal hatching pattern. The line is broken at the gap, and the break is indicated by two parallel diagonal lines. The line continues on both sides of the gap.

EASEMENT NOTE

There is a 10 foot wide public utility easement along all perimeter lines and public rights-of-way. There is a 10 foot wide public utility easement along both sides of the side and back lot lines

SHEET 3 OF 3

File No.: 1718prelim3	Designed By: skip
Job No.: 1718-388	Drawn By: skip
Date: January 2011	Checked By:
Scale: 1" = 200'	Revised: 01 Mar 11



AUSTIN SURVEYORS
2105 Justin Lane #103
Austin, Texas 78757
512-454-6605