

WILLIAMSON COUNTY, TEXAS

CHANGE ORDER NUMBER: 2

1. CONTRACTOR: S&G Contracting, Inc.
2. Change Order Work Limits: Sta. _____ to Sta. _____
3. Type of Change (on federal-aid non-exempt projects): Minor (Major/Minor)
4. Reasons: 2G; 3F; 3L (3 Max. - In order of importance - Primary first)

Project:	<u>Park HQ</u>
ParkProject	<u>#11WC907</u>
Purchase Order Number:	_____

5. Describe the work being revised:

install electrical pull box on IT tower, raise water line due to unknown initial depth, ensure employee safety and future maintenance with attic stairway, ensure ADA compliance with sidewalk, parking, restroom (Please see attached)

6. Work to be performed in accordance with Items: see work change proposal number 2 (attached)
7. New or revised plan sheet(s) are attached and numbered: site plans for sidewalk/parking are attached
8. New Special Provisions to the contract are attached: ☐ Yes ☒ No
9. New Special Provisions to Item N/A No. N/A, Special Specification Item N/A are attached.

Each signatory hereby warrants that each has the authority to execute this Change Order (CO).

The contractor must sign the Change Order and, by doing so, agrees to waive any and all claims for additional compensation due to any and all other expenses; additional changes for time, overhead and profit; or loss of compensation as a result of this change.

The following information must be provided

Time Ext. #: N/A Days added on this CO: 0

Amount added by this change order: \$17,170.08

THE CONTRACTOR

Date

9/15/11

By

Typed/Printed Name

Jimmy S. Gibson

Typed/Printed Title

VICE PRESIDENT

RECOMMENDED FOR EXECUTION:

[Signature] 9/15/11
Project Manager
Construction Observer Date

[Signature] 9/15/11
Design Engineer Date

Randy Bell 9/15/11
Program Manager Date

Design Engineer's Seal:



County Commissioner Precinct 1 Date
☐ APPROVED ☐ REQUEST APPROVAL

County Commissioner Precinct 2 Date
☐ APPROVED ☐ REQUEST APPROVAL

County Commissioner Precinct 3 Date
☐ APPROVED ☐ REQUEST APPROVAL

County Commissioner Precinct 4 Date
☐ APPROVED ☐ REQUEST APPROVAL

☐ APPROVED County Judge Date



**Work Change Proposal
No.2RR
Various Changes as Discussed**

Date Submitted: September 07, 2011

Submitted to: Williamson County Purchasing Department
301 SE Inner Loop Suite 106
Georgetown, TX 78626
C/O Randy Bell

RE: Work changes for project # 11WC907 Regional Park Headquarters

S&G Contracting, Inc. respectfully submits this change in the amount of **\$ 17,170.08 Seventeen thousand one hundred seventy dollars and 08/100**

Description/Breakdown:

1. Cost from Merrigan Electric for installation of Pull Box at pole location as per request : \$572.00
2. Cost from Merrigan Electric for change in the entry lighting arrangement & material as per request: \$0.00
3. Cost from Tri Supply for Aluminum Attic Access Stair System as per request: \$290.00
4. Cost from KRM Concrete to clear, prep & pour sidewalk, complete with bridge and rails. Price also includes wheel stops, stripping and signage : \$10,246.55
5. Extra cost from Boettcher to add 2-90's, pipe/labor, to raise water line to normal depth, from the 7.5' deep elevation discovered: \$756.00
6. Cost from Madera Framing, Inc. for decorative plate steel & bolts at back porch beam as per request: \$0.00
7. Cost from Level Line Construction for extra insulation as requested: 575.00
8. Cost from Superior Metal for steel plates added to corner supports at rafter tails: \$ 143.24
9. Cost for additional tile in bathroom to meet ADA requirements & additional cost for over budget tile as per requested: \$1,158.87
10. Direct cost in support of subcontractor for requested changes(i.e.: fuel, labor & supplies) : \$150.00
11. S&G 20 % OH&P : \$2,778.33
12. Subtotal: \$ 16,669.99
13. Bond & Ins. 3%: \$500.09
14. Total Change: \$ 17,170.08

If you have any questions, please do not hesitate to call us. We can be reached at 512.331.8799 or 512.331.4228,
Or shane@sginc.biz

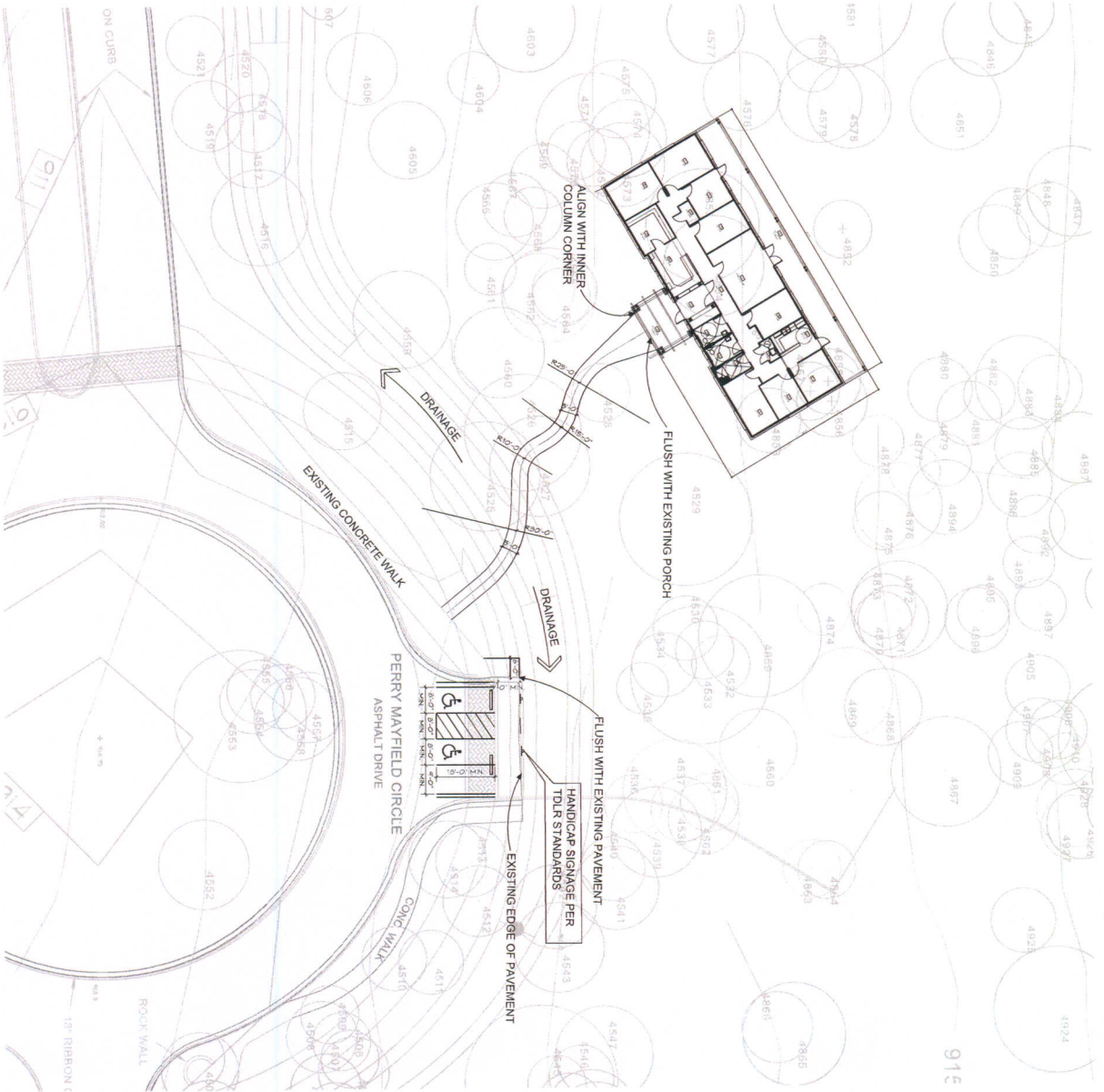
Regards,

A blue ink signature of Jimmy S. Gibson, consisting of a large, stylized 'J' and 'G' followed by a horizontal line.

Jimmy S. Gibson
S&G Contracting Inc.

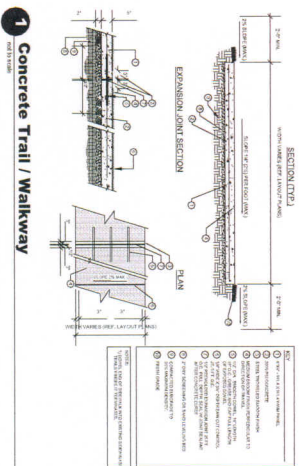
8863 Anderson Mill Road, Suite 108 Austin, TX 78729
Email: sales@sginc.biz **Fax:** 512.331.8795 **Tel:** 512.331.8799 **Toll Free:** 888.880.8799
S&G Contracting, Inc.



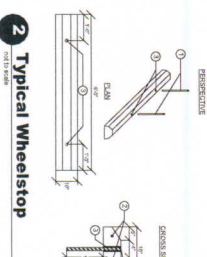


ACCESSIBLE WALKWAYS/STAIR NOTES

1. THESE ARE STANDARD CONSTRUCTION NOTES AND SHALL BE USED IN CONJUNCTION WITH THE 2010 ADA STANDARDS FOR ACCESSIBLE BUILDINGS AND FACILITIES (2010 ADA STANDARDS) AND THE 2010 ADA STANDARDS FOR ACCESSIBLE TRANSPORTATION (2010 ADA STANDARDS FOR TRANSPORTATION).
2. THE NOTES SHOWN ON ANY ACCESSIBLE TRAIL SHALL BE USED IN CONJUNCTION WITH THE 2010 ADA STANDARDS FOR ACCESSIBLE BUILDINGS AND FACILITIES (2010 ADA STANDARDS) AND THE 2010 ADA STANDARDS FOR ACCESSIBLE TRANSPORTATION (2010 ADA STANDARDS FOR TRANSPORTATION).
3. THE NOTES SHOWN ON ANY ACCESSIBLE TRAIL SHALL BE USED IN CONJUNCTION WITH THE 2010 ADA STANDARDS FOR ACCESSIBLE BUILDINGS AND FACILITIES (2010 ADA STANDARDS) AND THE 2010 ADA STANDARDS FOR ACCESSIBLE TRANSPORTATION (2010 ADA STANDARDS FOR TRANSPORTATION).
4. THE NOTES SHOWN ON ANY ACCESSIBLE TRAIL SHALL BE USED IN CONJUNCTION WITH THE 2010 ADA STANDARDS FOR ACCESSIBLE BUILDINGS AND FACILITIES (2010 ADA STANDARDS) AND THE 2010 ADA STANDARDS FOR ACCESSIBLE TRANSPORTATION (2010 ADA STANDARDS FOR TRANSPORTATION).
5. THE NOTES SHOWN ON ANY ACCESSIBLE TRAIL SHALL BE USED IN CONJUNCTION WITH THE 2010 ADA STANDARDS FOR ACCESSIBLE BUILDINGS AND FACILITIES (2010 ADA STANDARDS) AND THE 2010 ADA STANDARDS FOR ACCESSIBLE TRANSPORTATION (2010 ADA STANDARDS FOR TRANSPORTATION).
6. THE NOTES SHOWN ON ANY ACCESSIBLE TRAIL SHALL BE USED IN CONJUNCTION WITH THE 2010 ADA STANDARDS FOR ACCESSIBLE BUILDINGS AND FACILITIES (2010 ADA STANDARDS) AND THE 2010 ADA STANDARDS FOR ACCESSIBLE TRANSPORTATION (2010 ADA STANDARDS FOR TRANSPORTATION).
7. THE NOTES SHOWN ON ANY ACCESSIBLE TRAIL SHALL BE USED IN CONJUNCTION WITH THE 2010 ADA STANDARDS FOR ACCESSIBLE BUILDINGS AND FACILITIES (2010 ADA STANDARDS) AND THE 2010 ADA STANDARDS FOR ACCESSIBLE TRANSPORTATION (2010 ADA STANDARDS FOR TRANSPORTATION).
8. THE NOTES SHOWN ON ANY ACCESSIBLE TRAIL SHALL BE USED IN CONJUNCTION WITH THE 2010 ADA STANDARDS FOR ACCESSIBLE BUILDINGS AND FACILITIES (2010 ADA STANDARDS) AND THE 2010 ADA STANDARDS FOR ACCESSIBLE TRANSPORTATION (2010 ADA STANDARDS FOR TRANSPORTATION).
9. THE NOTES SHOWN ON ANY ACCESSIBLE TRAIL SHALL BE USED IN CONJUNCTION WITH THE 2010 ADA STANDARDS FOR ACCESSIBLE BUILDINGS AND FACILITIES (2010 ADA STANDARDS) AND THE 2010 ADA STANDARDS FOR ACCESSIBLE TRANSPORTATION (2010 ADA STANDARDS FOR TRANSPORTATION).
10. THE NOTES SHOWN ON ANY ACCESSIBLE TRAIL SHALL BE USED IN CONJUNCTION WITH THE 2010 ADA STANDARDS FOR ACCESSIBLE BUILDINGS AND FACILITIES (2010 ADA STANDARDS) AND THE 2010 ADA STANDARDS FOR ACCESSIBLE TRANSPORTATION (2010 ADA STANDARDS FOR TRANSPORTATION).
11. THE NOTES SHOWN ON ANY ACCESSIBLE TRAIL SHALL BE USED IN CONJUNCTION WITH THE 2010 ADA STANDARDS FOR ACCESSIBLE BUILDINGS AND FACILITIES (2010 ADA STANDARDS) AND THE 2010 ADA STANDARDS FOR ACCESSIBLE TRANSPORTATION (2010 ADA STANDARDS FOR TRANSPORTATION).
12. THE NOTES SHOWN ON ANY ACCESSIBLE TRAIL SHALL BE USED IN CONJUNCTION WITH THE 2010 ADA STANDARDS FOR ACCESSIBLE BUILDINGS AND FACILITIES (2010 ADA STANDARDS) AND THE 2010 ADA STANDARDS FOR ACCESSIBLE TRANSPORTATION (2010 ADA STANDARDS FOR TRANSPORTATION).
13. THE NOTES SHOWN ON ANY ACCESSIBLE TRAIL SHALL BE USED IN CONJUNCTION WITH THE 2010 ADA STANDARDS FOR ACCESSIBLE BUILDINGS AND FACILITIES (2010 ADA STANDARDS) AND THE 2010 ADA STANDARDS FOR ACCESSIBLE TRANSPORTATION (2010 ADA STANDARDS FOR TRANSPORTATION).
14. THE NOTES SHOWN ON ANY ACCESSIBLE TRAIL SHALL BE USED IN CONJUNCTION WITH THE 2010 ADA STANDARDS FOR ACCESSIBLE BUILDINGS AND FACILITIES (2010 ADA STANDARDS) AND THE 2010 ADA STANDARDS FOR ACCESSIBLE TRANSPORTATION (2010 ADA STANDARDS FOR TRANSPORTATION).
15. THE NOTES SHOWN ON ANY ACCESSIBLE TRAIL SHALL BE USED IN CONJUNCTION WITH THE 2010 ADA STANDARDS FOR ACCESSIBLE BUILDINGS AND FACILITIES (2010 ADA STANDARDS) AND THE 2010 ADA STANDARDS FOR ACCESSIBLE TRANSPORTATION (2010 ADA STANDARDS FOR TRANSPORTATION).



1 Concrete Trail / Walkway



2 Typical Wheelstop



Williamson County
Southwest Regional Park
Headquarters

A101A

Copyright 2011

Revisions:

8/22/2011

Comments:

WMA GROUP

LANDSCAPE ARCHITECTURE
FACILITIES DESIGN, INC.
10101 10101
10101 10101
10101 10101

Drawn By: WMA
Checked By: WMA
Approved By: WMA
Job Number: 09002
Date: 8/22/11
Drawing Type: Schematic
Scale: 1/8" = 1'-0"