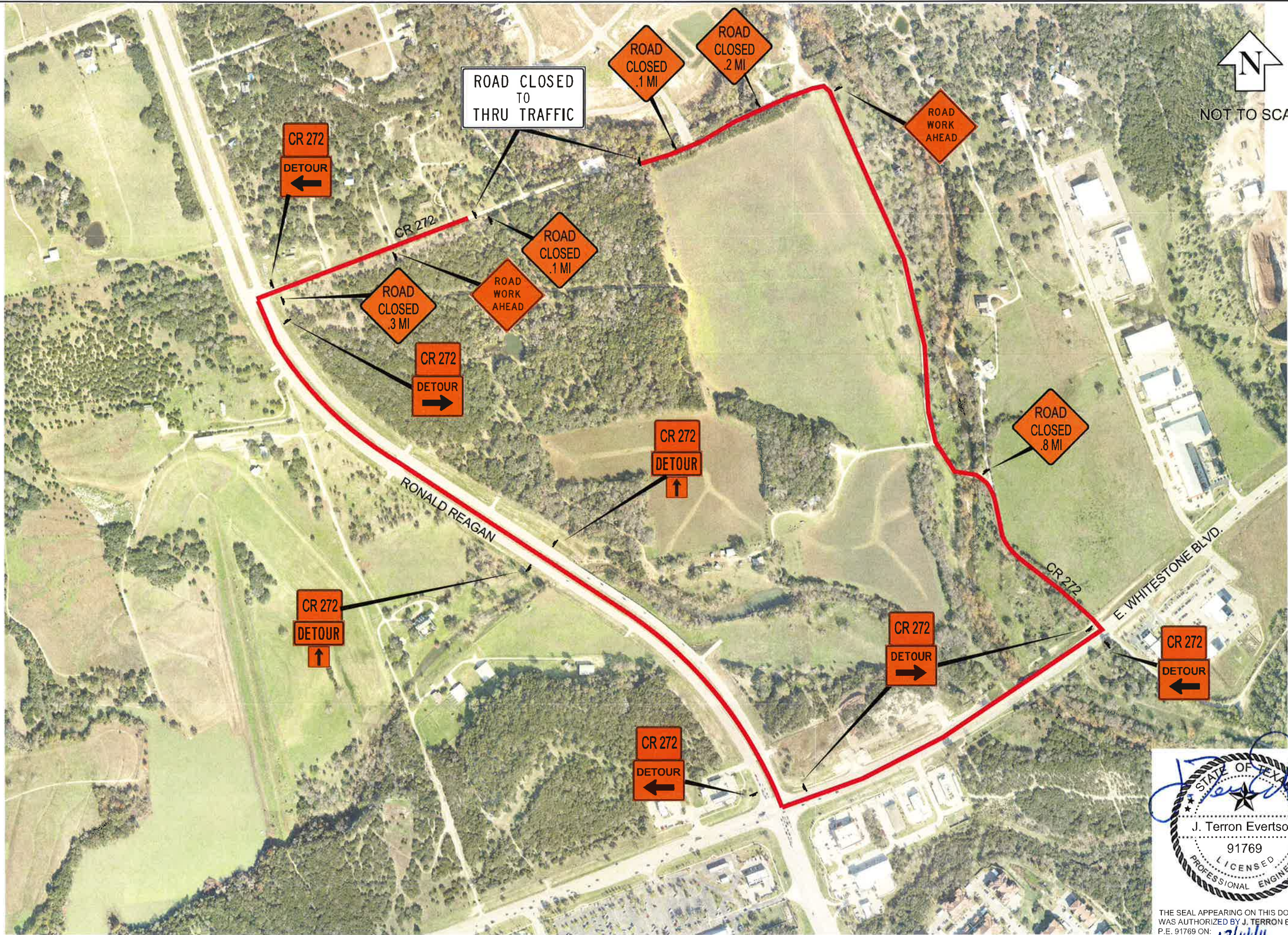


SHEET TAB: CR 272 DETOUR
PLOT TIME: 12/13/11 3:47pm
DRAWING: P:\ROADWAYS\CR 272\2011\Drawings\Exhibits\CR 272 DETOUR.dwg



PROJECT: CR 272		DATE: 12/13/11	DESIGNED: RR	CAD DWG: LEP	REVIEWED: JTE
SHEET		1			
OF		1			
WILLIAMSON COUNTY DEPT. OF INFRASTRUCTURE		3151 S.E. INNER LOOP, SUITE B GEORGETOWN, TEXAS 78626 943-3330 www.wilco.org			
CR 272 ROAD CLOSURE		NO. DESCRIPTION BY DATE			
WILLIAMSON COUNTY					