

# VAUGHN

CONSTRUCTION

2001 S.E. Inner Loop  
Georgetown, TX 78626  
Phone: (512) 230-6282  
Fax: (512) 681-9752

May 14, 2012

Gary Wilson  
Williamson County, Texas  
710 Main Street #101  
Georgetown, TX 78626

Re: Williamson County Emergency Services Operations Center CM  
Job No: 172201

Subj: Change Proposal No. 172201-0011

Gentlemen:

We respectfully submit our proposal for an increase to our contract in the amount of \$0 (zero) dollars to provide Added reinforcing at light standards per RFI#34 for the above referenced project.

Our price is valid for Ten (10) days

Please indicate your acceptance of this change proposal by signing and returning one copy of the attached Form B breakdown of our cost.

Very truly yours,  
VAUGHN CONSTRUCTION



Doug Boram

Attachments: Form B and Backup

CC: File

**FORM B**

PROJECT: Williamson County Emergency Services Operations Center CM

CHANGE PROPOSAL NO: 172201-0011

## QUOTATION :

Item	Labor	Materials	Subs	Total
Added reinforcing at light standards per RFI#34	\$0.00	\$0.00	\$10,156.00	\$10,156.00
CM Contingency	\$0.00	\$(10,156.00)	\$0.00	\$(10,156.00)

Totals	\$0.00	\$(10,156.00)	\$10,156.00	\$0.00
--------	--------	---------------	-------------	--------

Insurance, Tax, Benefits on Labor	\$0.00
-----------------------------------	--------

Overhead	\$0.00
----------	--------

Fee on Subs	\$0.00
-------------	--------

Fee on JTV	\$0.00
------------	--------

Bond	\$0.00
------	--------

Remodel Tax	\$0.00
-------------	--------

---

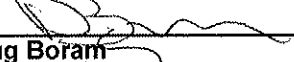
TOTAL	\$0.00
-------	--------

TIME EXTENSION TO CONTRACT: 0 Days

Submitted Date: 5/14/2012

Accepted

VAUGHN CONSTRUCTION

By: By:   
Doug Boram

Date 5-16-12

Proposal Valid for 10 Days

# Williamson County

## Change in Work - Cost Analysis Form

(To Be Completed All Subcontractors, Suppliers & Contractors Associated with the Change Proposal)

Project No. & Name: 1722-01 Wilco ESOC DATE 5/9/2012  
 Contractor Name: Vaughn Construction - CM Change No. 172201-0011  
 Description of Change: Added reinforcing at light standards per RFI#34

Means Code	Description	Quantity	Unit	Unit Cost	Labor	Material & Equipment	Subcontract
	Vaughn Construction General Works	1	LS				\$ -
	Fuquay, Inc.	1	LS				\$ -
	Empire Acero, LLC	1	LS				\$ -
	MGC Millwork, L.P.	1	LS				\$ -
	Chamberlin Austin, LLC	1	LS				\$ -
	Luebe-Jones, Inc.	1	LS				\$ -
	ESS Group, LLC	1	LS				\$ -
	Floydeo, Inc.	1	LS				\$ -
	Brit-Tex Plastering Company	1	LS				\$ -
	W.E. Imhoff & Company, Inc.	1	LS				\$ -
	Boyd Tile, LLC	1	LS				\$ -
	MIL, Ltd., dba Myrex Ind.	1	LS				\$ -
	Airborne Flag & Flagpole, LLC,	1	LS				\$ -
	Red & White Greenery	1	LS				\$ -
							\$ -
							\$ -
	<b>Bonded Subs</b>						
	Brazos Masonry, Inc.	1	LS				\$ -
	Wattinger Company, Inc.	1	LS				\$ -
	Forman Equipment & Contracting, Inc. dba Forman - Austin	1	LS				\$ -
	Capitol Concrete Contractors, Inc.	1	LS				\$ 10,156
	OVER THE TOP SYSTEMS, LTD dba Pioneer Roof Systems	1	LS				\$ -
	Standard Drywall, Inc.	1	LS				\$ -
							\$ -
	<b>Subguard Covered Subs</b>						
	Champion Site Prep, L.P.	1	LS				\$ -
	Coreslab Structures (Texas) Inc.	1	LS				\$ -
	KST Electric, Ltd.	1	LS				\$ -
	Vaughn Construction General Works - Subguard Coverage 1.25%	1	LS				\$ -
				<b>SUBTOTAL</b>	\$ -	\$ -	\$ 10,156

**BOND** \$ -

<b>Work performed by the Contractor's own employees (per UGC 22.1.2a)</b>	<b>SUBTOTAL</b>	<b>\$ -</b>
Work up to \$10,000.00, add...	15.0%	\$ -
Work between \$10,000.01 and \$20,000.00, add...	10.0%	\$ -
Work greater than \$20,000.00, add...	7.5%	\$ -

<b>Managing subcontracted work (per UGC 22.1.2b)</b>	<b>SUBTOTAL</b>	<b>\$ 10,156</b>
Work up to \$10,000.00, add...	10.0%	\$ -
Work between \$10,000.01 and \$20,000.00, add...	7.5%	\$ -
Work greater than \$20,000.00, add...	5.0%	\$ -

**TOTAL FOR THIS CHANGE PROPOSAL \$ 10,156**

## Funds Tracking Log

Change Proposal No.	Change Type & No.	Time Extension (Days)		Owner Betterment	GMP Breakdown				GMP #1722.01	Total Updated Contract Amount
		Pending	Approved		Cost of Work	CM Contingency	General Conditions	Construction Phase Fee		
N/A	GMP	-	-	\$250,000	\$10,551,524	\$492,568	\$682,947	\$320,169	\$12,297,208	\$12,297,208
1	CMC	3	-	\$0	\$3,660	(\$3,660)	\$0	\$0	\$0	\$12,297,208
2	OB	-	-	(\$4,000)	\$4,000	\$0	\$0	\$0	\$0	\$12,297,208
3	CMC	2	-	\$0	\$12,623	(\$12,623)	\$0	\$0	\$0	\$12,297,208
4	OB	3	-	(\$8,551)	\$8,551	\$0	\$0	\$0	\$0	\$12,297,208
5	GMP	-	-	\$0	(\$15,500)	\$15,500	\$0	\$0	\$0	\$12,297,208
6	OB	-	-	(\$20,846)	\$20,846	\$0	\$0	\$0	\$0	\$12,297,208
7	CMC	-	-	\$0	\$12,055	(\$12,055)	\$0	\$0	\$0	\$12,297,208
8	CMC	-	-	\$0	\$2,955	(\$2,955)	\$0	\$0	\$0	\$12,297,208
9	OB	-	-	(\$7,750)	\$7,750	\$0	\$0	\$0	\$0	\$12,297,208
10	CMC	-	-	\$0	\$1,388	(\$1,388)	\$0	\$0	\$0	\$12,297,208
11	OB	-	-	\$0	\$10,156	(\$10,156)	\$0	\$0	\$0	\$12,297,208
Current Amounts		3	0	\$208,853	\$10,620,008	\$465,231	\$682,947	\$320,169	\$12,297,208	\$12,297,208

TOTAL FOR THIS CHANGE PROPOSAL: \$ 10,156



P.O. Box 438 Liberty Hill, TX 78642  
Voice: (512) 515-0650 Fax: (512) 515-0645

April 13, 2012

Attn: Colby  
Vaughn Construction  
Via email

**RE: WilCo ESOC - Change Order #5**

The following is our change order proposal for the above referenced project in the amount of \$10,161.00. If you have any questions, please do not hesitate to call at 512-515-0650.

Thank you,  
Kelly Behrens

**Description – Add additional reinforcing at tight standards per RFI #34.**

Material -	\$ 6,870.00
Labor -	\$ 1,133.55
Labor burden -	\$ 317.39
Equipment and fuel-	\$ 175.00
Bond -	\$ 339.84
OH&P -	\$ 1,325.37
<b>Total -</b>	<b>\$ 10,161.15</b>

Add 3 day(s) to schedule duration.

**Exclusions and clarifications:**

Overtime, non-standard work hours. Includes exclusions from original proposal  
This change order request may be withdrawn or deem invalid if not accepted within 10 calendar days. Direction to perform the work described herein constitutes acceptance of the change order request in its entirety, including but not limited to price and scope.

Please sign the approval below and return so that material can be ordered and work may be scheduled. No material will be ordered or work will take place prior to written approval.

Approved by:

\_\_\_\_\_  
Name

\_\_\_\_\_  
Date

## REQUEST FOR INFORMATION



2001 S E Inner Loop  
Georgetown TX 78626  
Phone: (512) 230-6282  
Fax: (512) 681-9752

RFI NO: 34  
To: Bill Spence  
Parsons  
106 East 6th Street, Suite 200  
Austin, TX 78701  
Phone: (512) 501-3745  
Fax: (512) 501-3741

Date: 04/02/2012

Required By: 04/02/2012

From: Colby Hilton

Project: Williamson County Emergency Services  
Operations Center (CM)

Job No: 172201

Re: Light Pole Base Rebar Clarification

Spec. Section:

Drawing Number: E-404

Other Reference: Submittal 03 20 00-1-1

### Question:

In reference to the typical rebar requirements for light pole bases, detail 2/E102 on Sheet E-404 currently shows (8) #8 bars in elevation view and (6) #6 bars in plan view. Additionally, per detail 8 on Sheet RP-10 of the approved concrete reinforcing shop drawings (Submittal 03 20 00-1-1), (6) #6 bars have been previously approved for light pole bases. Per coordination between B. Lambert (Parsons), B. Spence (Parsons), and S. Baker (Vaughn) on 4/2/12, it appears (8) #8 bars will now be required at these locations. Please verify the bar sizes and quantities required at light pole bases.

### Proposed Answer:

Please advise

### Answer:

(8) #8 OR (15) #6

*Bang Lambert* 04/02/12

Very truly yours,

VAUGHN CONSTRUCTION

Attachments:

CC:

RETURN SUBMITTAL  
COVER SHEET



2001 S.E. Inner Loop  
Georgetown TX 78626  
Phone: (512) 230-6282  
Fax: (512) 681-9752

Date: 3/23/2012

Re: Williamson County Emergency Services  
Operations Center (CM)

Transmitted To:  
Ryan Killingsworth  
2300 Ranch Rd 1869  
Liberty Hill TX 78642  
Phone: (512) 515-0650  
Fax: (512) 515-0645

Job No: 172201

From:  
VAUGHN CONSTRUCTION  
2001 S.E. Inner Loop  
Georgetown TX 78626  
Phone: (512) 230-6282  
Fax: (512) 681-9752

TRANSMITTING:  
( One ) 1 Copies of submittals as detailed below

SUBMITTAL NO(S):  
32000-1-1

SUBMITTAL DESCRIPTION(S):  
Concrete Reinforcing - Shop Drawings

ACTIONS TAKEN  
No Exceptions

\* All material safety data sheets for any product, consumables or otherwise, must be given to Vaughn's superintendent prior to use on or arrival at the jobsite.

\*\* Submittal approval shall not relieve subcontractor or supplier from responsibility for errors or deviation from the contract documents.

This submittal has been reviewed only as to general design and requirements of the contract documents of this project. SubContractor/Vendor to verify dimensions, quantities and field conditions for proper and complete installation of this work.

By:  
Colby Hilton

CC:  
Vaughn File - 1 Copy



106 East Sixth Street, Suite 200  
Austin, Texas 78701-3638  
Tel 512/501.3740  
Fax 512/501.3741  
<http://www.parsons.com>

## **PARSONS** SUBMITTAL REVIEW

Project Williamson County ESOC  
Parsons Project No. 446431  
Location 2001 Inner Loop, Georgetown TX  
Contractor Vaughn Construction Company, Inc.

Submittal Number 03 20 00-1-1 R-1

- ☒ NO EXCEPTIONS
- ☐ EXCEPTIONS AS NOTED
- ☐ REVISE AND RESUBMIT
- ☐ SUBMIT SPECIFIED ITEM
- ☐ RECORD COPY RETAINED FIO

Description Concrete Reinforcing - Shop Drawings

Review Comments 1. No Exceptions taken

This review is only for general conformance with the design concept of the project and general compliance with the information given in the Contract Documents. Corrections or comments made on the Shop Drawings during this review do not relieve the contractor from compliance with the requirements of the plans and specifications. Acceptance of a specific item shall not include acceptance of an assembly of which the item is a component. Contractor is responsible for: dimensions to be confirmed and correlated at the job site; information that pertains solely to the fabrication processes or to the means, methods, techniques, sequences and procedures of construction; coordination of the Work of all trades; and performing all Work in a safe and satisfactory manner.

By: Bill Spence

Date: March 21, 2012

Subcontractor Capitol Concrete Contractors, Inc.

# SUBMITTAL COVER SHEET

**VAUGHN**  
CONSTRUCTION

2001 S.E. Inner Loop  
Georgetown, TX 78626  
Phone: (512) 230-6282  
Fax: (512) 681-9752

Date: 3/13/2012

Re: Williamson County Emergency Services  
Operations Center (CM)

VCC#: 172201

From:  
VAUGHN CONSTRUCTION  
2001 S.E. Inner Loop  
Georgetown, TX 78626  
Phone: (512) 230-6282  
Fax: (512) 681-9752

Transmitted To:  
Bill Spence  
106 East 6th Street, Suite 200  
Austin, TX 78701  
Phone: (512) 501-3745  
Fax: (512) 501-3741

Vaughn Construction has reviewed this Submittal only as to general design and requirements of the Contract documents of this project. SubContractor/Vendor to verify dimensions, quantities and field conditions for proper and complete installation of this work. Approval shall not relieve subcontractor or vendor from responsibility for errors or deviation from the contract documents.

BY: 

Colby Hilton

TRANSMITTING:  
( One ) 1 Copies of submittals as detailed below

AS SUBMITTED BY:  
Capitol Concrete Contractors, Inc.

SUBMITTAL NO(S):  
32000-1-1

SUBMITTAL DESCRIPTION:  
Concrete Reinforcing - Shop Drawings

CC: Gary Wilson (WILCO) - For Record  
Vaughn File - 1 Copy

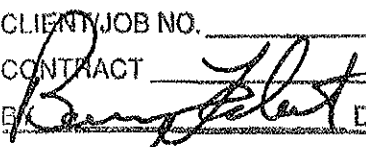
Vaughn Construction has reviewed the subcontractor's certifications contained on the submittal cover sheet for the work included within the scope of the submittal, and based upon our review of such, does not dispute such certifications.

Submitted in response to the  
review comments noted on  
Submittal 03 20 00-1-0 (Also  
referenced on the two following  
sheets).

PLEASE RETURN 1 COPIES WITH COMMENTS TO VAUGHN CONSTRUCTION

A/E COMMENTS:

A/E Stamp:

<input checked="checked" type="checkbox"/>	NO EXCEPTIONS
<input type="checkbox"/>	EXCEPTIONS AS NOTED
<input type="checkbox"/>	PROCEED WITH WORK
<input type="checkbox"/>	RESUBMIT
<input type="checkbox"/>	SUBMIT CERTIFIED PRINTS
PARSONS	
CLIENT/JOB NO. _____	
CONTRACT _____	
BY  DATE 03-21-12	
ACTION TAKEN HEREON DOES NOT SUPERSEDE REQUIREMENTS OF APPLICABLE DESIGN DRAWINGS, SPECIFICATIONS, ORDERS, CODES OR REGULATIONS, OR RELIEVE THE CONTRACTOR OR SUPPLIER FROM RESPONSIBILITY FOR ERRORS OR OMISSIONS.	

By: \_\_\_\_\_

# SUBMITTAL COVER SHEET

**VAUGHN**  
CONSTRUCTION

2001 S.E. Inner Loop  
Georgetown, TX 78626  
Phone: (512) 230-6282  
Fax: (512) 681-9752

Date: 3/13/2012

Re: Williamson County Emergency Services  
Operations Center (CM)

VCC#: 172201

From:  
VAUGHN CONSTRUCTION  
2001 S.E. Inner Loop  
Georgetown, TX 78626  
Phone: (512) 230-6282  
Fax: (512) 681-9752

Transmitted To:  
Bill Spence  
106 East 6th Street, Suite 200  
Austin, TX 78701  
Phone: (512) 501-3745  
Fax: (512) 501-3741

Vaughn Construction has reviewed this Submittal only as to general design and requirements of the Contract documents of this project. SubContractor/Vendor to verify dimensions, quantities and field conditions for proper and complete installation of this work. Approval shall not relieve subcontractor or vendor from responsibility for errors or deviation from the contract documents.

BY: 

Colby Hilton

TRANSMITTING:  
( One ) 1 Copies of submittals as detailed below

AS SUBMITTED BY:  
Capitol Concrete Contractors, Inc.

SUBMITTAL NO(S):  
32000-1-1

SUBMITTAL DESCRIPTION:  
Concrete Reinforcing - Shop Drawings

Submitted in response to the  
review comments noted on  
Submittal 03 20 00-1-0 (Also  
referenced on the two following  
sheets).

CC: Gary Wilson (WILCO) - For Record  
Vaughn File - 1 Copy

Vaughn Construction has reviewed the subcontractor's certifications contained on the submittal cover sheet for the work included within the scope of the submittal, and based upon our review of such, does not dispute such certifications.

PLEASE RETURN 1 COPIES WITH COMMENTS TO VAUGHN CONSTRUCTION

A/E COMMENTS:

A/E Stamp:

☒ NO EXCEPTION TAKEN  
☐ REJECTED  
☐ RESUBMIT SPECIFIED ITEM

☐ MAKE CORRECTIONS NOTED  
☐ REVISE AND RESUBMIT

Checking is only for general conformance with the design concept of the project and general compliance with the information given in the contract documents. Any action shown is subject to the requirements of the plans and specifications. Contractor is responsible for dimensions which shall be confirmed and correlated at the job site; fabrication processes and techniques of construction; coordination of his or her work with that of all other trades; and the satisfactory performance of his or her work.

DATE:

3/14/12

BY:

MB

By: \_\_\_\_\_



**BAKER-AICKLEN  
& ASSOCIATES, INC.**  
Engineers / Surveyors

# SUBMITTAL COVER SHEET



2001 S.E. Inner Loop  
Georgetown, TX 78626  
Phone: (512) 230-6282  
Fax: (512) 681-9752

Date: 3/2/2012

Re: Williamson County Emergency Services  
Operations Center (CM)

VCC#: 172201

From:  
VAUGHN CONSTRUCTION  
2001 S.E. Inner Loop  
Georgetown, TX 78626  
Phone: (512) 230-6282  
Fax: (512) 681-9752

Transmitted To:  
Bill Spence  
106 East 6th Street, Suite 200  
Austin, TX 78701  
Phone: (512) 501-3745  
Fax: (512) 501-3741

Vaughn Construction has reviewed this Submittal only as to general design and requirements of the Contract documents of this project. SubContractor/Vendor to verify dimensions, quantities and field conditions for proper and complete installation of this work. Approval shall not relieve subcontractor or vendor from responsibility for errors or deviation from the contract documents.

BY: 

Colby Hilton

TRANSMITTING:  
( One ) 1 Copies of submittals as detailed below

AS SUBMITTED BY:  
Capitol Concrete Contractors, Inc.

SUBMITTAL NO(S):  
32000-1-1

SUBMITTAL DESCRIPTION:  
Concrete Reinforcing - Shop Drawings

Submitted in response to the  
comments noted on Submittal 03  
20 00-1-0. Also referenced on the  
two following sheets.

CC: Gary Wilson (WILCO) - For Record  
Vaughn File - 1 Copy

Vaughn Construction has reviewed the subcontractor's certifications contained on the submittal cover sheet for the work included within the scope of the submittal, and based upon our review of such, does not dispute such certifications.

PLEASE RETURN 1 COPIES WITH COMMENTS TO VAUGHN CONSTRUCTION

A/E COMMENTS:

A/E Stamp:

☐ NO EXCEPTION TAKEN  
☐ REJECTED  
☐ RESUBMIT SPECIFIED ITEM  
☒ MAKE CORRECTIONS NOTED  
☐ REVISE AND RESUBMIT

*\*NOT  
UPDATED  
NEED  
TO ANSWER*

Checking is only for general conformance with the design concept of the original and general compliance with the information given in the contract documents. Any action shown is subject to the requirements of the plans and specifications. Contractor is responsible for dimensions which shall be confirmed and corrected at the job site; fabrication, erection, and techniques of construction; coordination of the contractor's work with that of all other trades; and the satisfactory performance of the work.

DATE: 3/9/12

BY: 

By: \_\_\_\_\_



Baker-Aicklen  
& Associates, Inc.  
CONSULTING ENGINEERS

106 East Sixth Street, Suite 200  
Austin, Texas 78701-3638  
Tel 512/501.3740  
Fax 512/501.3741  
<http://www.parsons.com>

## PARSONS SUBMITTAL REVIEW

Project Williamson County ESOC  
Parsons Project No. 446431  
Location 2001 Inner Loop, Georgetown TX  
Contractor Vaughn Construction Company, Inc.

### Original Review Comments

Submittal Number 03 20 00-1-0

- ☐ NO EXCEPTIONS
- ☒ EXCEPTIONS AS NOTED
- ☒ REVISE AND RESUBMIT
- ☐ SUBMIT SPECIFIED ITEM
- ☐ RECORD COPY RETAINED FIO

Description Concrete Reinforcing - Shop Drawings

- Review Comments
1. Ref Structural comments -- Exceptions as noted
  2. Ref Civil comments -- Revise and resubmit

This review is only for general conformance with the design concept of the project and general compliance with the information given in the Contract Documents. Corrections or comments made on the Shop Drawings during this review do not relieve the contractor from compliance with the requirements of the plans and specifications. Acceptance of a specific item shall not include acceptance of an assembly of which the item is a component. Contractor is responsible for: dimensions to be confirmed and correlated at the job site; information that pertains solely to the fabrication processes or to the means, methods, techniques, sequences and procedures of construction; coordination of the Work of all trades; and performing all Work in a safe and satisfactory manner.

By: Bill Spence

Date: February 24, 2012

Subcontractor Capitol Concrete Contractors, Inc.

# SUBMITTAL COVER SHEET

Original Review Comments

**VAUGHN**  
CONSTRUCTION

2001 S.E. Inner Loop  
Georgetown, TX 78626  
Phone: (512) 230-6282  
Fax: (512) 681-9752

Date: 2/13/2012

Re: Williamson County Emergency Services  
Operations Center (CM)

VCC#: 172201

From:  
VAUGHN CONSTRUCTION  
2001 S.E. Inner Loop  
Georgetown, TX 78626  
Phone: (512) 230-6282  
Fax: (512) 681-9752

Transmitted To:  
Bill Spence  
106 East 6th Street, Suite 200  
Austin, TX 78701  
Phone: (512) 501-3745  
Fax: (512) 501-3741

Vaughn Construction has reviewed this Submittal only as to general design and requirements of the Contract documents of this project. SubContractor/Vendor to verify dimensions, quantities and field conditions for proper and complete installation of this work. Approval shall not relieve subcontractor or vendor from responsibility for errors or deviation from the contract documents.

BY: 

Colby Hilton

TRANSMITTING:  
( One ) 1 Copies of submittals as detailed below

AS SUBMITTED BY:  
Capitol Concrete Contractors, Inc.

SUBMITTAL NO(S):  
32000-1-0

SUBMITTAL DESCRIPTION:  
Concrete Reinforcing - Shop Drawings

CC: Gary Wilson (WILCO) - For Record  
Vaughn File - 1 Copy

Vaughn Construction has reviewed the subcontractor's certifications contained on the submittal cover sheet for the work included within the scope of the submittal, and based upon our review of such, does not dispute such certifications.

PLEASE RETURN 1 COPIES WITH COMMENTS TO VAUGHN CONSTRUCTION

A/E COMMENTS:

A/E Stamp:

☐ NO EXCEPTION TAKEN  
☐ REJECTED  
☐ RESUBMIT SPECIFIED



MAKE CORRECTIONS NOTED  
RETRNSL AND RESUBMIT

\*REVIEWED  
SHEET RP. #  
ONLY. 1D  
REUSE DETAIL  
SHEET REF.  
PER APP.  
PLAN SET.  
WHERE IS  
DETAIL  
4? In plans?

Checking is only for general conformance with the design concept of the project and general compliance with the information given in the contract documents. Any action shown is subject to the requirements of the plans and specifications. Contractor is responsible for dimensions which shall be confirmed and correlated at the job site; fabrication processes and techniques of construction; coordination of his or her work with that of all other trades; and the satisfactory performance of his or her work

DATE: 2/20/12

BY: KUF

By: \_\_\_\_\_



BAKER-AICKLEN  
& ASSOCIATES, INC.  
Engineers / Surveyors

# SUBMITTAL COVER SHEET



2001 S.E. Inner Loop  
Georgetown, TX 78626  
Phone: (512) 230-6282  
Fax: (512) 681-9752

Date: 2/13/2012

Re: Williamson County Emergency Services  
Operations Center (CM)

VCC#: 172201

Transmitted To:  
Bill Spence  
106 East 6th Street, Suite 200  
Austin, TX 78701  
Phone: (512) 501-3745  
Fax: (512) 501-3741

From:  
VAUGHN CONSTRUCTION  
2001 S.E. Inner Loop  
Georgetown, TX 78626  
Phone: (512) 230-6282  
Fax: (512) 681-9752

Vaughn Construction has reviewed this Submittal only as to general design and requirements of the Contract documents of this project. SubContractor/Vendor to verify dimensions, quantities and field conditions for proper and complete installation of this work. Approval shall not relieve subcontractor or vendor from responsibility for errors or deviation from the contract documents.

BY:   
Colby Hilton

TRANSMITTING:  
( One ) 1 Copies of submittals as detailed below

AS SUBMITTED BY:  
Capitol Concrete Contractors, Inc.

SUBMITTAL NO(S):  
32000-1-0

SUBMITTAL DESCRIPTION:  
Concrete Reinforcing - Shop Drawings

CC: Gary Wilson (WILCO) - For Record  
Vaughn File - 1 Copy

Vaughn Construction has reviewed the subcontractor's certifications contained on the submittal cover sheet for the work included within the scope of the submittal, and based upon our review of such, does not dispute such certifications.

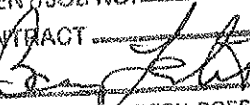
PLEASE RETURN 1 COPIES WITH COMMENTS TO VAUGHN CONSTRUCTION

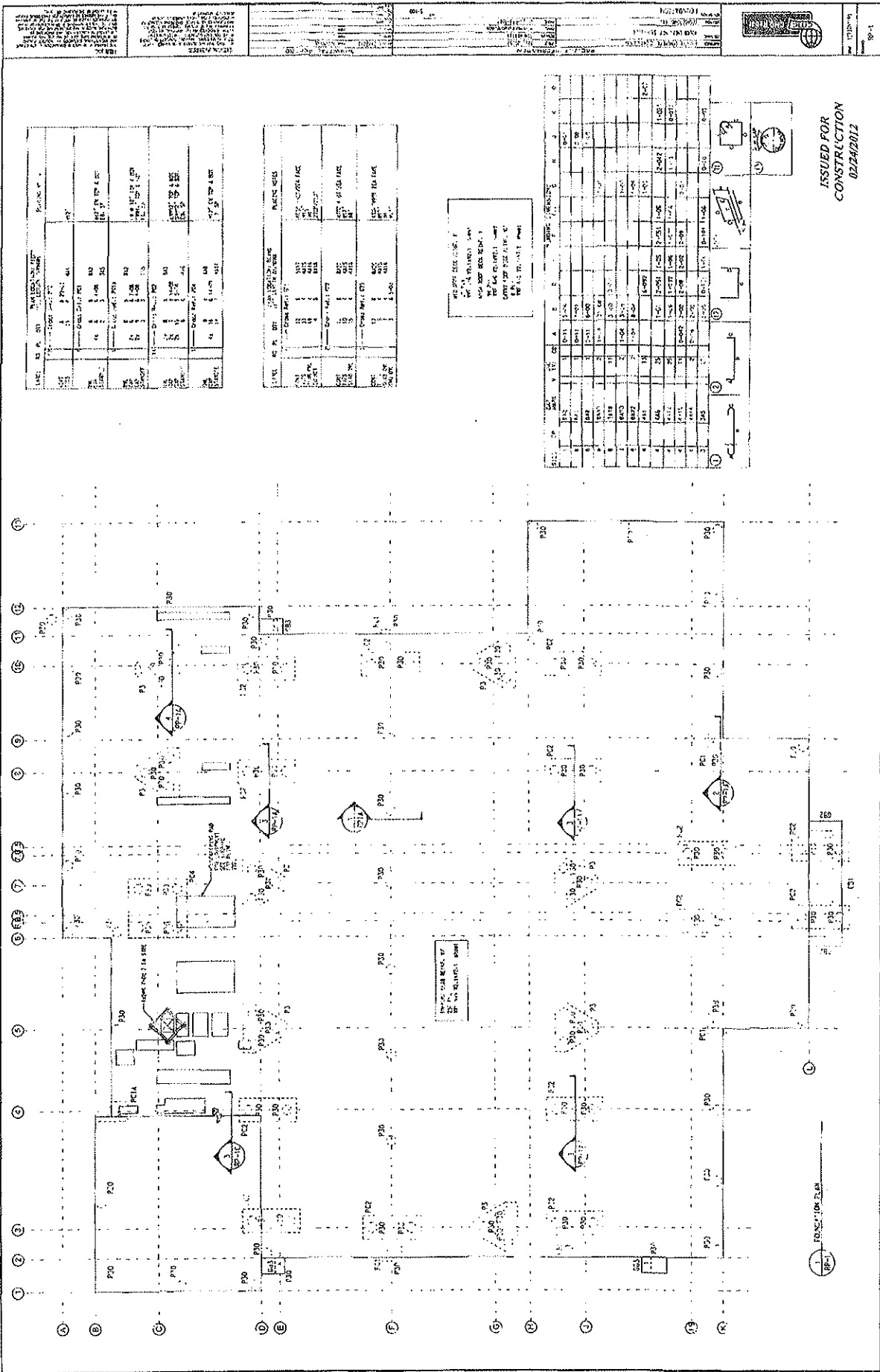
A/E COMMENTS:

A/E Stamp:

\_\_\_\_\_  
\_\_\_\_\_  
\_\_\_\_\_  
\_\_\_\_\_  
\_\_\_\_\_  
\_\_\_\_\_  
\_\_\_\_\_  
\_\_\_\_\_

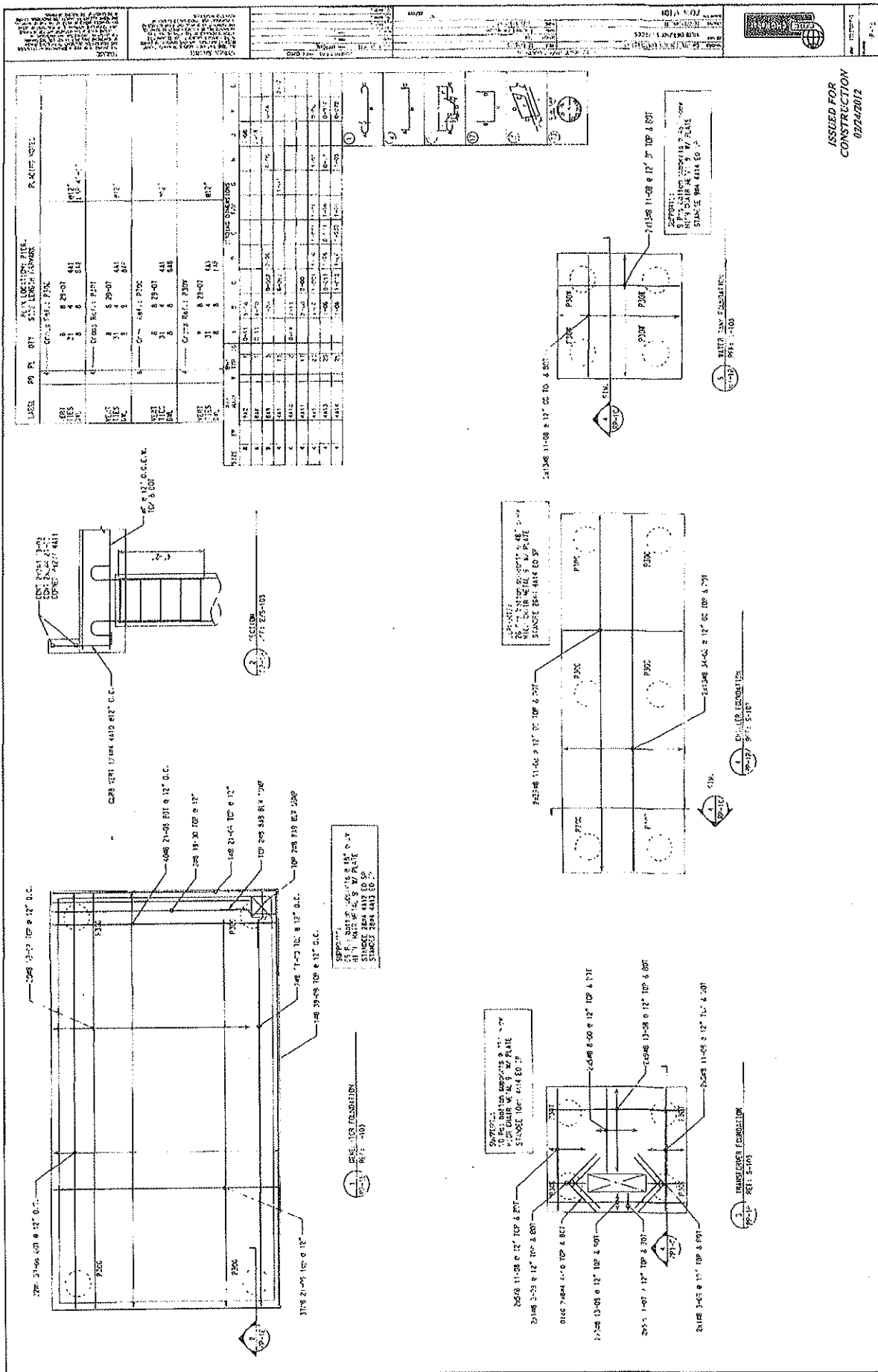
By: \_\_\_\_\_

<input checked="checked" type="checkbox"/>	NO EXCEPTIONS
<input type="checkbox"/>	EXCEPTIONS AS NOTED
<input type="checkbox"/>	PROCEED WITH WORK
<input type="checkbox"/>	RESUBMIT
<input type="checkbox"/>	SUBMIT CERTIFIED PRINTS
PARSONS	
CLIENT/JOB NO. _____	
CONTRACT _____	
BY: 	DATE: 2/22/12
ACTION TAKEN HEREON DOES NOT SUPERSEDE REQUIREMENTS OF APPLICABLE DESIGN DRAWINGS, SPECIFICATIONS, ORDERS, CODES OR REGULATIONS. I BELIEVE THE CONTRACTOR OR SUPPLIER FROM LIABILITY FOR ERRORS OR OMISSIONS.	

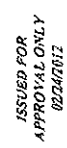












Q	R	S	T	U	V	W	X	Y	Z	AA	AB	AC	AD	AE	AF	AG	AH	AI	AJ	AK	AL	AM	AN	AO	AP	AQ	AR	AS	AT	AU	AV	AW	AX	AY	AZ	BA	BB	BC	BD	BE	BF	BG	BH	BI	BJ	BK	BL	BM	BN	BO	BP	BQ	BR	BS	BT	BU	BV	BW	BX	BY	BZ	CA	CB	CC	CD	CE	CF	CG	CH	CI	CJ	CK	CL	CM	CN	CO	CP	CQ	CR	CS	CT	CU	CV	CW	CX	CY	CZ	DA	DB	DC	DD	DE	DF	DG	DH	DI	DJ	DK	DL	DM	DN	DO	DP	DQ	DR	DS	DT	DU	DV	DW	DX	DY	DZ	EA	EB	EC	ED	EE	EF	EG	EH	EI	EJ	EK	EL	EM	EN	EO	EP	EQ	ER	ES	ET	EU	EV	EW	EX	EY	EZ	FA	FB	FC	FD	FE	FF	FG	FH	FI	FJ	FK	FL	FM	FN	FO	FP	FQ	FR	FS	FT	FU	FV	FW	FX	FY	FZ	GA	GB	GC	GD	GE	GF	GG	GH	GI	GJ	GK	GL	GM	GN	GO	GP	GQ	GR	GS	GT	GU	GV	GW	GX	GY	GZ	HA	HB	HC	HD	HE	HF	HG	HH	HI	HJ	HK	HL	HM	HN	HO	HP	HQ	HR	HS	HT	HU	HV	HW	HX	HY	HZ	IA	IB	IC	ID	IE	IF	IG	IH	II	IJ	IK	IL	IM	IN	IO	IP	IQ	IR	IS	IT	IU	IV	IW	IX	IY	IZ	JA	JB	JC	JD	JE	JF	JG	JH	JI	IJ	JK	KL	JM	JN	JO	JP	JQ	JR	JS	JT	JU	JV	JW	JX	JY	JZ	KA	KB	KC	KD	KE	KF	KG	KH	KI	KJ	KL	KM	KN	KO	KP	KQ	KR	KS	KT	KU	KV	KW	KX	KY	KZ	LA	LB	LC	LD	LE	LF	LG	LH	LI	LJ	LK	LM	LN	LO	LP	LQ	LR	LS	LT	LU	LV	LW	LX	LY	LZ	MA	MB	MC	MD	ME	MF	MG	MH	MI	MJ	MK	ML	MM	MN	MO	MP	MQ	MR	MS	MT	MU	MV	MW	MX	MY	MZ	NA	NB	NC	ND	NE	NF	NG	NH	NI	NJ	NK	NL	NM	NN	NO	NP	NQ	NR	NS	NT	NU	NV	NW	NX	NY	NZ	OA	OB	OC	OD	OE	OF	OG	OH	OI	OJ	OK	OL	OM	ON	OO	OP	OQ	OR	OS	OT	OU	OV	OW	OX	OY	OZ	PA	PB	PC	PD	PE	PF	PG	PH	PI	PJ	PK	PL	PM	PN	PO	PP	PQ	PR	PS	PT	PU	PV	PW	PX	PY	PZ	QA	QB	QC	QD	QE	QF	QG	QH	QI	QJ	QK	QL	QM	QN	QO	QP	QQ	QR	QS	QT	QU	QV	QW	QX	QY	QZ	RA	RB	RC	RD	RE	RF	RG	RH	RI	RJ	RK	RL	RM	RN	RO	RP	RQ	RR	RS	RT	RU	RV	RW	RX	RY	RZ	SA	SB	SC	SD	SE	SF	SG	SH	SI	SJ	SK	SL	SM	SN	SO	SP	SQ	SR	SS	ST	SU	SV	SW	SX	SY	SZ	TA	TB	TC	TD	TE	TF	TG	TH	TI	TJ	TK	TL	TM	TN	TO	TP	TQ	TR	TS	TT	TU	TV	TW	TX	TY	TZ	UA	UB	UC	UD	UE	UF	UG	UH	UI	UJ	UK	UL	UM	UN	UO	UP	UQ	UR	US	UT	UU	UV	UW	UX	UY	UZ	VA	VB	VC	VD	VE	VF	VG	VH	VI	VJ	VK	VL	VM	VN	VO	VP	VQ	VR	VS	VT	VU	VV	VW	VX	VY	VZ	WA	WB	WC	WD	WE	WF	WG	WH	WI	WJ	WK	WL	WM	WN	WO	WP	WQ	WR	WS	WT	WU	WV	WW	WX	WY	WZ	XA	XB	XC	XD	XE	XF	XG	XH	XI	XJ	XK	XL	XM	XN	XO	XP	XQ	XR	XS	XT	XU	XV	XW	XX	XY	XZ	YA	YB	YC	YD	YE	YF	YG	YH	YI	YJ	YK	YL	YM	YN	YO	YP	YQ	YR	YS	YT	YU	YV	YW	YX	YY	YZ	ZA	ZB	ZC	ZD	ZE	ZF	ZG	ZH	ZI	ZJ	ZK	ZL	ZM	ZN	ZO	ZP	ZQ	ZR	ZS	ZT	ZU	ZV	ZW	ZX	ZY	ZZ
28																												28																												28																												28																																																																																																																																																																																																																																																																																																																																																																																																																																																																																																																																																																																																																							
28																												28																												28																												28																																																																																																																																																																																																																																																																																																																																																																																																																																																																																																																																																																																																																							
28																												28																												28																												28																																																																																																																																																																																																																																																																																																																																																																																																																																																																																																																																																																																																																							
28																												28																												28																												28																																																																																																																																																																																																																																																																																																																																																																																																																																																																																																																																																																																																																							
28																												28																												28																												28																																																																																																																																																																																																																																																																																																																																																																																																																																																																																																																																																																																																																							
28																												28																												28																												28																																																																																																																																																																																																																																																																																																																																																																																																																																																																																																																																																																																																																							
28																												28																												28																												28																																																																																																																																																																																																																																																																																																																																																																																																																																																																																																																																																																																																																							
28																												28																												28																												28																																																																																																																																																																																																																																																																																																																																																																																																																																																																																																																																																																																																																							
28																												28																												28																												28																																																																																																																																																																																																																																																																																																																																																																																																																																																																																																																																																																																																																							
28																												28																												28																												28																																																																																																																																																																																																																																																																																																																																																																																																																																																																																																																																																																																																																							
28																												28																												28																												28																																																																																																																																																																																																																																																																																																																																																																																																																																																																																																																																																																																																																							
28																												28																												28																												28																																																																																																																																																																																																																																																																																																																																																																																																																																																																																																																																																																																																																							
28																												28																												28																												28																																																																																																																																																																																																																																																																																																																																																																																																																																																																																																																																																																																																																							
28																												28																												28																												28																																																																																																																																																																																																																																																																																																																																																																																																																																																																																																																																																																																																																							
28																												28																												28																												28																																																																																																																																																																																																																																																																																																																																																																																																																																																																																																																																																																																																																							
28																												28																												28																												28																																																																																																																																																																																																																																																																																																																																																																																																																																																																																																																																																																																																																							
28																												28																												28																												28																																																																																																																																																																																																																																																																																																																																																																																																																																																																																																																																																																																																																							
28																												28																												28																												28																																																																																																																																																																																																																																																																																																																																																																																																																																																																																																																																																																																																																							
28																												28																												28																												28																																																																																																																																																																																																																																																																																																																																																																																																																																																																																																																																																																																																																							
28																												28																												28																												28																																																																																																																																																																																																																																																																																																																																																																																																																																																																																																																																																																																																																							
28																												28																												28																												28																																																																																																																																																																																																																																																																																																																																																																																																																																																																																																																																																																																																																							
28																												28																												28																												28																																																																																																																																																																																																																																																																																																																																																																																																																																																																																																																																																																																																																							
28																												28																												28																												28																																																																																																																																																																																																																																																																																																																																																																																																																																																																																																																																																																																																																							
28																												28																												28																												28																																																																																																																																																																																																																																																																																																																																																																																																																																																																																																																																																																																																																							
28																												28																												28																												28																																																																																																																																																																																																																																																																																																																																																																																																																																																																																																																																																																																																																							
28																												28																												28																												28																																																																																																																																																																																																																																																																																																																																																																																																																																																																																																																																																																																																																							
28																												28																												28																												28																																																																																																																																																																																																																																																																																																																																																																																																																																																																																																																																																																																																																							
28																												28																												28																												28																																																																																																																																																																																																																																																																																																																																																																																																																																																																																																																																																																																																																							
28																												28																												28																												28																																																																																																																																																																																																																																																																																																																																																																																																																																																																																																																																																																																																																							
28																												28																												28																												28																																																																																																																																																																																																																																																																																																																																																																																																																																																																																																																																																																																																																							
28																												28																												28																												28																																																																																																																																																																																																																																																																																																																																																																																																																																																																																																																																																																																																																							
28																												28																												28																												28																																																																																																																																																																																																																																																																																																																																																																																																																																																																																																																																																																																																																							
28																												28																												28																												28																																																																																																																																																																																																																																																																																																																																																																																																																																																																																																																																																																																																																							
28																												28																												28																												28																																																																																																																																																																																																																																																																																																																																																																																																																																																																																																																																																																																																																							
28																												28																												28																												28																																																																																																																																																																																																																																																																																																																																																																																																																																																																																																																																																																																																																							
28																												28																												28																												28																																																																																																																																																																																																																																																																																																																																																																																																																																																																																																																																																																																																																							
28																												28																												28																												28																																																																																																																																																																																																																																																																																																																																																																																																																																																																																																																																																																																																																							
28																												28																												28																												28																																																																																																																																																																																																																																																																																																																																																																																																																																																																																																																																																																																																																							
28																												28																												28																												28																																																																																																																																																																																																																																																																																																																																																																																																																																																																																																																																																																																																																							
28																												28																												28																												28																																																																																																																																																																																																																																																																																																																																																																																																																																																																																																																																																																																																																							
28																												28																												28																												28																																																																																																																																																																																																																																																																																																																																																																																																																																																																																																																																																																																																																							
28																												28																												28																												28																																																																																																																																																																																																																																																																																																																																																																																																																																																																																																																																																																																																																							
28																												28																												28																												28																																																																																																																																																																																																																																																																																																																																																																																																																																																																																																																																																																																																																							
28																												28																												28																												28																																																																																																																																																																																																																																																																																																																																																																																																																																																																																																																																																																																																																							
28																												28																												28																												28																																																																																																																																																																																																																																																																																																																																																																																																																																																																																																																																																																																																																							
28																												28																												28																												28																																																																																																																																																																																																																																																																																																																																																																																																																																																																																																																																																																																																																							
28																												28																												28																												28																																																																																																																																																																																																																																																																																																																																																																																																																																																																																																																																																																																																																							
28																												28																												28																												28																																																																																																																																																																																																																																																																																																																																																																																																																																																																																																																																																																																																																							
28																												28																												28																												28																																																																																																																																																																																																																																																																																																																																																																																																																																																																																																																																																																																																																							
28																												28																												28																												28																																																																																																																																																																																																																																																																																																																																																																																																																																																																																																																																																																																																																							
28																												28																												28																												28																																																																																																																																																																																																																																																																																																																																																																																																																																																																																																																																																																																																																							