

WILLIAMSON COUNTY, TEXAS

CHANGE ORDER NUMBER: 1

Received

'APR 15 2014

- 1. CONTRACTOR: BPI Environmental Services, Inc.
- 2. Change Order Work Limits: Sta. 10+00 to Sta. 36+63
- 3. Type of Change(on federal-aid non-exempt projects): Minor (Major/Minor)
- 4. Reasons: 2G, 4B, 3H (3 Max. - In order of importance - Primary first)

Project: MTB Corporation 13IFB00119  
 Round Rock  
 Roadway: CR 170  
 Purchase Order Number: \_\_\_\_\_

5. Describe the work being revised:

**2G: Differing Site Conditions (unforeseeable). Unadjusted Utility (unforeseeable). 4B: Third Party Accommodation. Third Party Requested Work.** Southwest Water Company has requested relocation of their water tower overflow pipe within the CR 170 ROW. **3H: County Convenience. Cost Savings Opportunity Discovered During Construction:** The "Constructing Detours" item has been changed from a 12" depth to a 6" depth, providing a cost savings to the County.

- 6. Work to be performed in accordance with Items: See Attached
- 7. New or revised plan sheet(s) are attached and numbered: Redline Sheets 94-95
- 8. New Special Provisions to the contract are attached:  Yes  No
- 9. New Special Provisions to Item N/A No. N/A, Special Specification Item N/A are attached.

Each signatory hereby warrants that each has the authority to execute this Change Order (CO).

<p><i>The contractor must sign the Change Order and, by doing so, agrees to waive any and all claims for additional compensation due to any and all other expenses; additional changes for time, overhead and profit; or loss of compensation as a result of this change.</i></p>	<p><b>The following information must be provided</b></p>
<p>THE CONTRACTOR Date <u>4/14/2014</u></p> <p>By <u>BPI</u></p> <p>Typed/Printed Name <u>Shane Dewert</u></p> <p>Typed/Printed Title <u>Vice President</u></p>	<p>Time Ext. #: <u>1</u> Days added on this CO: <u>7</u></p> <p>Amount added by this change order: <u>(\$3,621.06)</u></p>

RECOMMENDED FOR EXECUTION:

[Signature] P.E. 4/15/14  
 Project Manager Date  
 Construction Observer

N/A  
 Design Engineer Date

[Signature] 4/15/2014  
 Program Manager Date

Design Engineer's Seal:  
 See Revised Sheets

County Commissioner Precinct 1 Date  
 APPROVED  REQUEST APPROVAL

County Commissioner Precinct 2 Date  
 APPROVED  REQUEST APPROVAL

County Commissioner Precinct 3 Date  
 APPROVED  REQUEST APPROVAL

County Commissioner Precinct 4 Date  
 APPROVED  REQUEST APPROVAL

County Judge Date  
 APPROVED



## CHANGE ORDER REASON(S) CODE CHART

1. Design Error or Omission	1A. Incorrect PS&E 1B. Other
2. Differing Site Conditions (unforeseeable)	2A. Dispute resolution (expense caused by conditions and/or resulting delay) 2B. Unavailable material 2C. New development (conditions changing after PS&E completed) 2D. Environmental remediation 2E. Miscellaneous difference in site conditions (unforeseeable)(Item 9) 2F. Site conditions altered by an act of nature 2G. Unadjusted utility (unforeseeable) 2H. Unacquired Right-of-Way (unforeseeable) 2I. Additional safety needs (unforeseeable) 2J. Other
3. County Convenience	3A. Dispute resolution (not resulting from error in plans or differing site conditions) 3B. Public relations improvement 3C. Implementation of a Value Engineering finding 3D. Achievement of an early project completion 3E. Reduction of future maintenance 3F. Additional work desired by the County 3G. Compliance requirements of new laws and/or policies 3H. Cost savings opportunity discovered during construction 3I. Implementation of improved technology or better process 3J. Price adjustment on finished work (price reduced in exchange for acceptance) 3K. Addition of stock account or material supplied by state provision 3L. Revising safety work/measures desired by the County 3M. Other
4. Third Party Accommodation	4A. Failure of a third party to meet commitment 4B. Third party requested work 4C. Compliance requirements of new laws and/or policies (impacting third party) 4D. Other
5. Contractor Convenience	5A. Contractor exercises option to change the traffic control plan 5B. Contractor requested change in the sequence and/or method of work 5C. Payment for Partnering workshop 5D. Additional safety work/measures desired by the contractor 5E. Other
6. Untimely ROW/Utilities	6A. Right-of-Way not clear (third party responsibility for ROW) 6B. Right-of-Way not clear (County responsibility for ROW) 6C. Utilities not clear 6D. Other

**Williamson County Road Bond Program**

**CR 170**

**Williamson County Project No. 13IFB00119**

**Change Order No. 1**

**Reason for Change**

This change order adds a new force account item to compensate the contractor for relocation of an unanticipated utility. Southwest Water Company's existing overflow pipe outfalls into the existing ditch along CR 170, and will be relocated to tie into the proposed storm sewer system. Also, this change order adds a new item for Constructing Detours with a 6" depth instead of a 12" depth, which will result in a cost savings to the County.

Following is a summary of new items required for this Change Order.

ITEM	DESCRIPTION	QTY	UNIT
508-2002A	CONSTRUCTING DETOURS (6" DEPTH)	3,335.00	SY
9999-003	SOUTHWEST WATER OVER FLOW PIPE RELOCATION	20,000.00	DL

This Change Order results in a net decrease of \$3,621.06 from the Contract amount, for an adjusted Contract total of \$2,138,277.72. The original Contract amount was \$2,141,898.78. As a result of this and all Change Orders to date, \$3,621.06 has been deducted from the Contract, resulting in a 0.2% net decrease in the Contract cost. Seven (7) additional days will be added to the Contract as a result of this Change Order.

**HNTB Corporation**

James Klotz, P.E.

 4/14/2014 BPI



CONSTRUCTION DETOUR

3,760 SY @ 6"

(AREA INCLUDES DRIVEWAYS)

ORIG 3027 SY

ORIG \$46.33/SY

ORIG \$140,846.31

EXCAVATION 6": 627 CY

ACP 6": 1,253 TONS

EQUIPMENT, LABOR & FUEL

PRICE: \$56,964.00 \$15.15 SY

MATERIAL & TRUCKING

PRICE: \$75,200.00 \$20.00 SY

APPROXIMATE COST

\$132,164.00 \$35.15 SY

\$ 700,377.05

34,000.00

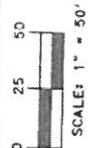
COST WILL BASE ON MEASUREMENT BY THE SQUARE YARD @ THE UNIT PRICE OF \$35.15 PER SY.

3027 SY @ 46.33 = 140,846.31  
627 CY @ 22.50 = 14,107.50  
1,253 TONS @ 56.00 = 70,168.00  
56,964.00  
75,200.00  
132,164.00





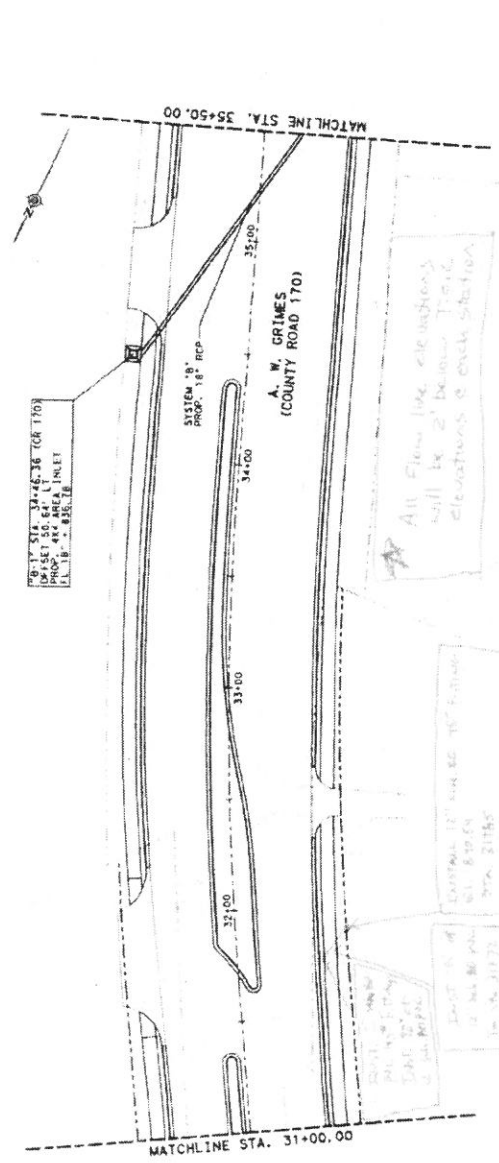
**BAKER-AICKLEN & ASSOCIATES, INC.**  
 ENGINEERS • ARCHITECTS • LAND • PLANNING  
 1007 W. ALBERTY AVE.  
 SUITE 100 • DENVER, CO 80202  
 PHONE: 303.733.1234  
 FAX: 303.733.1235



**NOTE:**  
 CURB INLET INFO SHOWN ON  
 DRAINAGE PLAN SHEETS IS  
 TO BE USED FOR CURB INLET  
 CURB INLETS, MANHOLE LINES  
 AND GRADE OF ROADWAY CURB AND  
 GUTTER.

**LEGEND**

TRAFFIC SIGNAL POLE	○
WATER MANHOLE	⊙
WATER VALVE	⊗
FIRE HYDRANT	⊕
WATER METER	⊖
WATER CONTROL VALVE	⊘
WATER TEST MANHOLE	⊙
TELEPHONE PEDESTAL	⊙
STORMSEWER MANHOLE	⊙
PULL BOX	⊙
UTS TEST STATION	⊙
WATER METER	⊙
COX WIRE ANCHOR	⊙
SIGN	⊙
MAILBOX	⊙
TREE	⊙
PROPERTY LINE	---
FENCE	---
COUNTY LINE	---
CITY LIMITS	---
BOUNDARY P.O.W.	---
BOUNDARY P.O.W.	---
WATERLINE	---
UNDERGROUND TELEPHONE	---
EX STORMSEWER	---
PROP STORMSEWER	---
CURB	---
UNDERGROUND CABLE	---
UNDERGROUND ELECTRIC	---
OVERHEAD ELECTRIC	---



NO. DATE REVISIONS RECORD

PROJECT

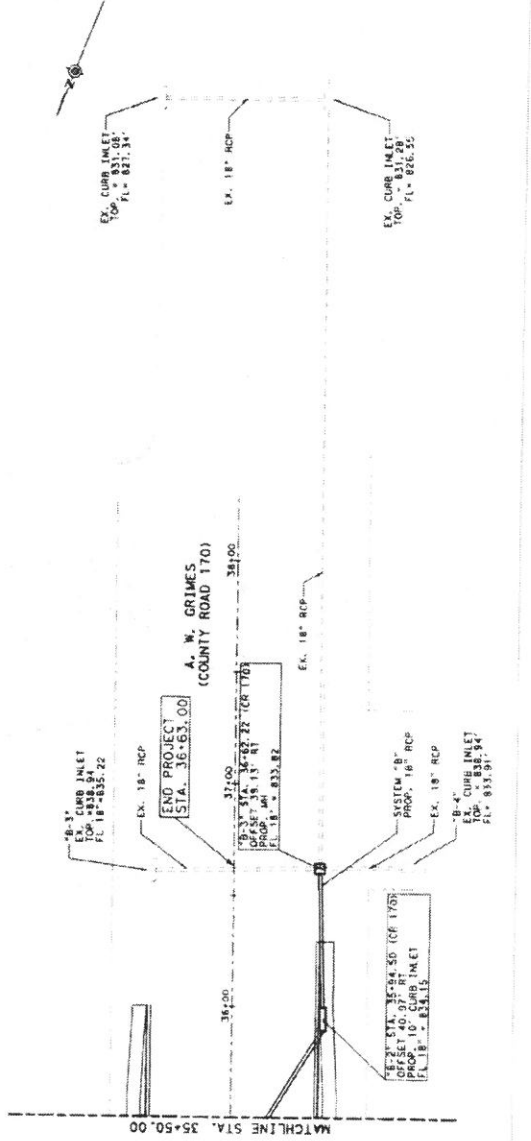
COUNTY ROAD 170

SHEET

STORMSEWER LAYOUT  
 STA. 31+00-END

PROJECT NUMBER DATE  
 1110000 12/21/02  
 DRAWN DESIGNED APPROVED SHEET NO  
 T.M.L. L.J.C. X 06

- NOTES**
1. ALL DIMENSIONS ARE TO FACE OF CURB UNLESS OTHERWISE NOTED.
  2. ALL UTILITIES SHOWN ARE BY APPROXIMATE LOCATION ONLY AND ARE TO BE FIELD VERIFIED BY THE CONTRACTOR PRIOR TO BEGINNING CONSTRUCTION.
  3. CONTRACTOR SHALL REPAIR / RECONNECT EXISTING UTILITIES DAMAGED OR DAMAGED DURING CONSTRUCTION.
  4. CONTRACTOR SHALL RETURN THE GROUND AREA DISTURBED BY CONSTRUCTION TO EQUAL OR BETTER CONDITION IN SUCH A MANNER AS NOT TO CHANGE THE ROUTE OF STORM WATER FLOW.
  5. EXISTING MAILBOXES TO BE RELOCATED TO EDGE OF PROPOSED SHOULDER AS REQUIRED.
  6. FENCES TO BE RELOCATED BY OTHERS AS REQUIRED.
  7. POWER POLES TO BE RELOCATED BY OTHERS AS REQUIRED.





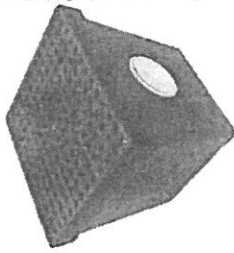
**Two Hole Drain Sump w/Grate, Blk,  
Plastic**

TUF-TITE

Part # 24WA13

Part # 24WA13 2HDS-4B UNSPEC 4814101  
 Catalog Page # N/A Shipping Weight 12.75  
 lbs

Country of Origin United States of America



**Technical Specs**

Part #	24WA13	Part #	24WA13
Material	Plastic	Finish	Black
Length	36"	Weight	12.75 lbs
Width	18"	Country of Origin	United States of America

**Compliance and Restrictions**

This item is not eligible for shipping.