

**WILLIAMSON COUNTY**  
**CONTRACT FOR ENGINEERING SERVICES**

**FIRM:** Freese and Nichols, Inc. (“Engineer”)  
**ADDRESS:** 10431 Morado Circle, Building 5, Suite 300, Austin, TX 78759  
**PROJECT:** Engineering Design Services for the repair of San Gabriel Ranch Road (“Project”)

**THE STATE OF TEXAS** §  
§  
**COUNTY OF WILLIAMSON** §

**THIS CONTRACT FOR ENGINEERING SERVICES** (“Contract”) is made and entered into, effective as the date of the last party’s execution hereinbelow, by and between Williamson County, Texas, a political subdivision of the State of Texas, whose offices are located at 710 Main Street, Suite 101, Georgetown, Texas, 78626 (hereinafter referred to as “County”), and Engineer, and such Contract is for the purpose of contracting for professional engineering services.

**RECITALS:**

WHEREAS, V.T.C.A., Government Code §2254.002(2)(A)(vii) under Subchapter A entitled “Professional Services Procurement Act” provides for the procurement by counties of services of professional engineers; and

WHEREAS, County and Engineer desire to contract for such professional engineering services; and

WHEREAS, County and Engineer wish to document their agreement concerning the requirements and respective obligations of the parties;

NOW, THEREFORE, WITNESSETH:

That for and in consideration of the mutual promises contained herein and other good and valuable considerations, and the covenants and agreements hereinafter contained to be kept and performed by the respective parties hereto, it is agreed as follows:

**ARTICLE 1**  
**CONTRACT DOCUMENTS AND APPLICABLE PROJECT DOCUMENTS**

**A. Contract Documents.** The Contract Documents consist of this Contract, any exhibits attached hereto (which exhibits are hereby incorporated into and made a part of this Contract), any fully executed Work Authorizations; any fully executed Supplemental Work Authorizations and all fully executed Contract Amendments (as defined herein in Article 14) which are subsequently issued. These form the entire contract, and all are as fully a part of this Contract as if attached to this Contract or repeated herein.

**B. Project Documents.** In addition to any other pertinent and necessary Project documents, the following documents shall be used in the development of the Project:

- A. TxDOT 2011 Texas Manual of Uniform Traffic Control Devices for Streets and Highways, including latest revisions
- B. Texas Department of Transportation's Standard Specifications for Construction of Highways, Streets, and Bridges, 2014 (English units)
- C. National Environmental Policy Act (NEPA)
- D. Texas Accessibility Standards (TAS) of the Architectural Barriers Act, Article 9102, Texas Civil Statutes, Effective April 4, 1994, including latest revisions
- E. Americans with Disabilities Act (ADA) Regulations
- F. U.S. Army Corps Regulations
- G. International Building Code, current edition as updated
- H. Williamson County Design Criteria & Project Development Manual, latest edition
- I. Williamson County Multi-Corridor Transportation Plan Project Level Environmental Review and Compliance Protocol, latest edition
- J. Williamson County Protocol for Sustainable Roadsides, latest edition
- K. TxDOT Bridge Design Manual - LRFD, latest edition
- L. TxDOT Geotechnical Manual, latest edition

**ARTICLE 2**  
**NON-COLLUSION; DEBARMENT; AND FINANCIAL INTEREST**  
**PROHIBITED**

**A. Non-collusion.** Engineer warrants that he/she/it has not employed or retained any company or persons, other than a bona fide employee working solely for Engineer, to solicit or secure this Contract, and that he/she/it has not paid or agreed to pay any company or engineer any fee, commission, percentage, brokerage fee, gifts, or any other consideration, contingent upon or resulting from the award or making of this Contract. For breach or violation of this warranty, County reserves and shall have the right to annul this Contract without liability or, in its discretion and at its sole election, to deduct from the contract price or compensation, or to otherwise recover, the full amount of such fee, commission, percentage, brokerage fee, gift or contingent fee.

**B. Debarment Certification.** Engineer must sign the Debarment Certification

enclosed herewith as **Exhibit A**.

**C. Financial Interest Prohibited.** Engineer covenants and represents that Engineer, his/her/its officers, employees, agents, consultants and subcontractors will have no financial interest, direct or indirect, in the purchase or sale of any product, materials or equipment that will be recommended or required for the construction of the Project.

### **ARTICLE 3** **ENGINEERING SERVICES**

Engineer shall perform Engineering Services as identified in **Exhibit B** entitled "Engineering Services."

County will prepare and issue Work Authorizations, in substantially the same form identified and attached hereto as **Exhibit C** and entitled "Work Authorization No. \_\_\_\_", to authorize the Engineer to perform one or more tasks of the Engineering Services. Each Work Authorization will include a description of the work to be performed, a description of the tasks and milestones, a work schedule for the tasks, definite review times by County and Engineer of all Engineering Services and a fee amount agreed upon by the County and Engineer. The amount payable for a Work Authorization shall be supported by the estimated cost of each work task as described in the Work Authorization. The Work Authorization will not waive the Engineer's responsibilities and obligations established in this Contract. The executed Work Authorizations shall become part of this Contract.

All work must be completed on or before the date specified in the Work Authorization. The Engineer shall promptly notify the County of any event which will affect completion of the Work Authorization, although such notification shall not relieve the Engineer from costs or liabilities resulting from delays in completion of the Work Authorization. Should the review times or Engineering Services take longer than shown on the Work Authorization, through no fault of Engineer, Engineer may submit a timely written request for additional time, which shall be subject to the approval of the County. Any changes in a Work Authorization shall be enacted by a written Supplemental Work Authorization before additional costs may be incurred. Any Supplemental Work Authorization must be executed by both parties within the period specified in the Work Authorization.

### **ARTICLE 4** **CONTRACT TERM**

**A. Term.** The Engineer is expected to complete the Engineering Services described herein in accordance with the above described Work Authorizations or any Supplemental Work Authorization related thereto. If Engineer does not perform the Engineering Services in accordance with each applicable Work Authorization or any Supplemental Work Authorization related thereto, then County shall have the right to terminate this Contract as set forth below in Article 20. So long as the County elects not to terminate this Contract, it shall continue from day to day until such time as the Engineering Services are completed in accordance with each applicable Work Authorization or any Supplemental Work Authorization related thereto. Any Engineering Services performed or

costs incurred after the date of termination shall not be eligible for reimbursement. Engineer shall notify County in writing as soon as possible if he/she/it determines, or reasonably anticipates, that the Engineering Services will not be completed in accordance with an applicable Work Authorization or any Supplemental Work Authorization related thereto.

**B. Work Authorizations.** Engineer acknowledges that each Work Authorization is of critical importance, and agrees to undertake all reasonably necessary efforts to expedite the performance of Engineering Services required herein so that construction of the Project will be commenced and completed as scheduled. In this regard, and subject to adjustments in a particular Work Authorization, as provided in Article 3 herein, Engineer shall proceed with sufficient qualified personnel and consultants necessary to fully and timely accomplish all Engineering Services required under this Contract in a professional manner.

**C. Commencement of Engineering Services.** After execution of this Contract, Engineer shall not proceed with Engineering Services until Engineer has been thoroughly briefed on the scope of the Project and has been notified in writing by the County to proceed, as provided in Article 8.

## **ARTICLE 5**

### **COMPENSATION AND EXPENSES**

County shall pay and Engineer agrees to accept up to the amount shown below as full compensation for the Engineering Services performed and to be performed under this Contract. The basis of compensation for the services of principals and employees engaged in the performance of the Engineering Services shall be based on the Rate Schedule set forth in the attached **Exhibit D**.

The maximum amount payable under this Contract, without modification, is **Three Hundred Six Thousand Seven Hundred Two Dollars (\$306,702.00)** (the "Compensation Cap"), provided that any amounts paid or payable shall be solely pursuant to a validly issued Work Authorization or any Supplemental Work Authorization related thereto. In no event may the aggregate amount of compensation authorized under Work Authorizations and Supplemental Work Authorizations exceed the Compensation Cap. The Compensation Cap shall be revised equitably only by written Contract Amendments executed by both parties in the event of a change the overall scope of the Engineering Services set forth in **Exhibit B**, as authorized by County.

The Compensation Cap is based upon all labor and non-labor costs estimated to be required in the performance of the Engineering Services provided for under this Contract. Should the actual costs of all labor and non-labor costs rendered under this Contract be less than the above stated Compensation Cap, then Engineer shall receive compensation for only actual fees and costs of the Engineering Services actually rendered and incurred, which may be less than the above stated Compensation Cap.

The Compensation Cap herein referenced may be adjusted for Additional Engineering Services requested and performed only if approved by a written Contract Amendment signed by both parties.



Engineer shall prepare and submit to County monthly progress reports in sufficient detail to support the progress of the Engineering Services and to support invoices requesting monthly payment. The format for such monthly progress reports and invoices must be in a format acceptable to County. Satisfactory progress of Engineering Services shall be an absolute condition of payment.

Engineer shall be reimbursed for actual non-labor and subcontract expenses incurred in the performance of the services under this Contract in accordance with the Williamson County Vendor Reimbursement Policy set forth under **Exhibit E**. Invoices requesting reimbursement for costs and expenditures related to the Project (reimbursables) must be accompanied by copies of the provider's invoice and comply with the Williamson County Vendor Reimbursement Policy. The copies of the provider's invoice must evidence the actual costs billed to Engineer without mark-up.

## **ARTICLE 6**

### **METHOD OF PAYMENT**

Payments to Engineer shall be made while Engineering Services are in progress. A monthly progress report, as referenced in Article 5 above (in a form acceptable to the County), shall be submitted to Williamson County Department of Infrastructure, to the attention of the Sr. Director of Infrastructure. Such progress report shall provide a summary of the work accomplished during the billing period for each Work Authorization task with an estimated percentage of completion for the task.

Simultaneous with submission of such progress report, Engineer shall prepare and submit one (1) original of a certified invoice to the Director of Road & Bridge in a form acceptable to the County Auditor. All invoices submitted to County must, at a minimum, be accompanied by an original complete packet of supporting documentation and time sheets detailing hours worked by staff persons with a description of the work performed by such persons. For Additional Engineering Services performed pursuant to this Contract, a separate invoice or itemization of the Additional Engineering Services must be presented with the same aforementioned requirements.

Payments shall be made by County based upon Engineering Services actually provided and performed.<sup>a</sup> Upon timely receipt and approval of each statement, County shall make a good faith effort to pay the amount which is due and payable within thirty (30) days of the County Auditor's receipt. County reserves the right to reasonably withhold payment pending verification of satisfactory Engineering Services performed. Engineer has the responsibility to submit proof to County, adequate and sufficient in its determination, that tasks of an applicable Work Authorization or any Supplemental Work Authorization related thereto were completed.

The certified statements shall show the total amount earned to the date of submission and shall show the amount due and payable as of the date of the current statement. Final payment does not relieve Engineer of the responsibility of correcting any errors and/or omissions resulting from his/her/its negligence.

---

<sup>a</sup> See also, Art. 32(P) "Termination of Work Authorization".

Upon submittal of the initial invoice, Engineer shall provide the County Auditor with an Internal Revenue Form W-9, Request for Taxpayer Identification Number and Certification that is complete in compliance with the Internal Revenue Code, its rules and regulations.

## **ARTICLE 7**

### **PROMPT PAYMENT POLICY**

In accordance with Chapter 2251, V.T.C.A., Texas Government Code, payment to Engineer will be made within thirty (30) days of the day on which the performance of services was complete, or within thirty (30) days of the day on which the County Auditor receives a correct invoice for services, whichever is later.

Engineer may charge a late fee (fee shall not be greater than that which is permitted by Texas law) for payments not made in accordance with this prompt payment policy; however, this policy does not apply in the event:

- A. There is a bona fide dispute between County and Engineer concerning the supplies, materials, or equipment delivered or the services performed that causes the payment to be late; or
- B. The terms of a federal contract, grant, regulation, or statute prevent County from making a timely payment with federal funds; or
- C. There is a bona fide dispute between Engineer and a subcontractor/subconsultant or between a subcontractor/subconsultant and its supplier concerning supplies, materials, or equipment delivered or the Engineering Services performed which causes the payment to be late; or
- D. The invoice is not submitted to Williamson County<sup>b</sup> in strict accordance with instructions, if any, on the purchase order, or this Contract or other such contractual agreement.

The County Auditor shall document to Engineer the issues related to disputed invoices within ten (10) calendar days of receipt of such invoice. Any non-disputed invoices shall be considered correct and payable per the terms of Chapter 2251, V.T.C.A., Texas Government Code.

## **ARTICLE 8**

### **COMMENCEMENT OF ENGINEERING SERVICES**

The Engineer shall not proceed with any task of the Engineering Services until Engineer has been thoroughly briefed on the scope of the Project and instructed, in writing by the County, to proceed with the applicable Engineering Services. The County shall not be responsible for work performed or costs incurred by Engineer related to any task for which a Work Authorization or a Supplemental Work Authorization related thereto has not been issued and signed by both parties. Engineer shall not be required to perform any work for which a Work Authorization or a Supplemental Work Authorization related thereto has not been issued and signed by both parties.

## **ARTICLE 9**

---

<sup>b</sup> See Art. 6, *supra*.

### **PROJECT TEAM**

County's Designated Representative for purposes of this Contract is as follows:

Williamson County Dept. of Infrastructure  
Attn: Director of Road & Bridge  
3151 SE Inner Loop, Suite B  
Georgetown, Texas 78626

County shall have the right, from time to time, to change the County's Designated Representative by giving Engineer written notice thereof. With respect to any action, decision or determination which is to be taken or made by County under this Contract, the County's Designated Representative may take such action or make such decision or determination or shall notify Engineer in writing of an individual responsible for and capable of taking such action, decision or determination and shall forward any communications and documentation to such individual for response or action. Actions, decisions or determinations by the County's Designated Representative on behalf of County shall be done in his or her reasonable business judgment unless express standards or parameters therefor are included in this Contract, in which case, actions taken by the County's Designated Representative shall be in accordance with such express standards or parameters. Any consent, approval, decision or determination hereunder by the County's Designated Representative shall be binding on County; *provided, however*, the County's Designated Representative shall not have any right to modify, amend or terminate this Contract, an Executed Work Authorization, an executed Supplemental Work Authorization or executed Contract Amendment. County's Designated Representative shall not have any authority to execute a Contract Amendment, Work Authorization or any Supplemental Work Authorization unless otherwise granted such authority by the Williamson County Commissioners Court.

Engineer's Designated Representative for purposes of this Contract is as follows:

Mike Nichols, P.E.  
Freese and Nichols, Inc.  
10431 Morado Circle, Building 5, Suite 300  
Austin, TX 78759

Engineer shall have the right, from time to time, to change the Engineer's Designated Representative by giving County written notice thereof. With respect to any action, decision or determination which is to be taken or made by Engineer under this Contract, the Engineer's Designated Representative may take such action or make such decision or determination or shall notify County in writing of an individual responsible for and capable of taking such action, decision or determination and shall forward any communications and documentation to such individual for response or action. Actions, decisions or determinations by the Engineer's Designated Representative on behalf of Engineer shall be done in his or her reasonable business judgment unless express standards or parameters therefor are included in this Contract, in which case, actions taken by the Engineer's Designated Representative shall be in accordance with such express standards or parameters. Any consent, approval, decision or determination hereunder by

the Engineer's Designated Representative shall be binding on Engineer. Engineer's Designated Representative shall have the right to modify, amend and execute Work Authorizations, Supplemental Work Authorizations and Contract Amendments on behalf of Engineer.

**ARTICLE 10**  
**PROGRESS EVALUATION**

Engineer shall, from time to time during the progress of the Engineering Services, confer with County at County's election. Engineer shall prepare and present such information as may be pertinent and necessary, or as may be reasonably requested by County, in order for County to evaluate features of the Engineering Services. At the request of County or Engineer, conferences shall be provided at Engineer's office, the offices of County, or at other locations designated by County. When requested by County, such conferences shall also include evaluation of the Engineering Services. County may, from time to time, require Engineer to appear and provide information to the Williamson County Commissioners Court.

Should County determine that the progress in Engineering Services does not satisfy an applicable Work Authorization or any Supplemental Work Authorization related thereto, then County shall review same with Engineer to determine corrective action required.

Engineer shall promptly advise County in writing of events which have or may have a significant impact upon the progress of the Engineering Services, including but not limited to the following:

- A. Problems, delays, adverse conditions which may materially affect the ability to meet the objectives of an applicable Work Authorization or any Supplemental Work Authorization related thereto, or preclude the attainment of Project Engineering Services units by established time periods; and such disclosure shall be accompanied by statement of actions taken or contemplated, and County assistance needed to resolve the situation, if any; and
- B. Favorable developments or events which enable meeting goals sooner than anticipated in relation to an applicable Work Authorization's or any Supplemental Work Authorization related thereto.

## **ARTICLE 11**

### **SUSPENSION**

Should County desire to suspend the Engineering Services, but not to terminate this Contract, then such suspension may be effected by County giving Engineer thirty (30) calendar days' verbal notification followed by written confirmation to that effect. Such thirty-day notice may be waived in writing by agreement and signature of both parties. The Engineering Services may be reinstated and resumed in full force and effect within sixty (60) days of receipt of written notice from County to resume the Engineering Services. Such sixty-day (60) notice may be waived in writing by agreement and signature of both parties. If this Contract is suspended for more than thirty (30) days, Engineer shall have the option of terminating this Contract and, in the event, Engineer shall be compensated for all Engineering Services performed and reimbursable expenses incurred, provided such Engineering Services and reimbursable expenses have been previously authorized and approved by County, to the effective date of suspension.

If County suspends the Engineering Services, the contract period as determined in Article 4, and the Work Authorization or any Supplemental Work Authorization related thereto, shall be extended for a time period equal to the suspension period.

County assumes no liability for Engineering Services performed or costs incurred prior to the date authorized by County for Engineer to begin Engineering Services, and/or during periods when Engineering Services is suspended, and/or subsequent to the completion date.

## **ARTICLE 12**

### **ADDITIONAL ENGINEERING SERVICES**

If Engineer forms a reasonable opinion that any work he/she/it has been directed to perform is beyond the overall scope of this Contract, as set forth in **Exhibit B**, and as such constitutes extra work ("Additional Engineering Services"), he/she/it shall promptly notify County in writing. In the event County finds that such work does constitute Additional Engineering Services, County shall so advise Engineer and a written Contract Amendment will be executed between the parties as provided in Article 14. Any increase to the Compensation Cap due to Additional Engineering Services must be set forth in such Contract Amendment. Engineer shall not perform any proposed Additional Engineering Services nor incur any additional costs prior to the execution, by both parties, of a written Contract Amendment. Following the execution of a Contract Amendment that provides for Additional Engineering Services, a written Work Authorization, which sets forth the Additional Engineering Services to be performed, must be executed by the parties. County shall not be responsible for actions by Engineer nor for any costs incurred by Engineer relating to Additional Engineering Services not directly associated with the performance of the Engineering Services authorized in this Contract, by a fully executed Work Authorization or a fully executed Contract Amendment thereto.

## **ARTICLE 13**

### **CHANGES IN COMPLETED ENGINEERING SERVICES**

If County deems it necessary to request changes to previously satisfactorily completed

Engineering Services or parts thereof which involve changes to the original Engineering Services or character of Engineering Services under this Contract, then Engineer shall make such revisions as requested and as directed by County. Such revisions shall be considered as Additional Engineering Services and paid for as specified under Article 12.

Engineer shall make revisions to Engineering Services authorized hereunder as are necessary to correct errors appearing therein, when required to do so by County. No additional compensation shall be due for such Engineering Services.

#### **ARTICLE 14**

#### **CONTRACT AMENDMENTS**

The terms set out in this Contract may be modified by a written fully executed Contract Amendment. Changes and modifications to a fully executed Work Authorization shall be made in the form of a Supplemental Work Authorization. To the extent that such changes or modifications to a Work Authorization do not also require modifications to the terms of this Contract (i.e. changes to the overall scope of Engineering Services set forth in **Exhibit B**, modification of the Compensation Cap, etc.) a Contract Amendment will not be required.

#### **ARTICLE 15**

#### **USE OF DOCUMENTS**

All documents, including but not limited to drawings, specifications and data or programs stored electronically, (hereinafter referred to as "Engineering Work Products") prepared by Engineer and its subcontractors/subconsultants are related exclusively to the services described in this Contract and are intended to be used with respect to this Project. However, it is expressly understood and agreed by and between the parties hereto that all of Engineer's designs under this Contract (including but not limited to tracings, drawings, estimates, specifications, investigations, studies and other documents, completed or partially completed), shall be the property of County to be thereafter used in any lawful manner as County elects. Any such subsequent use made of documents by County shall be at County's sole risk and without liability to Engineer.

By execution of this Contract and in confirmation of the fee for services to be paid under this Contract, Engineer hereby conveys, transfers and assigns to County all rights under the Federal Copyright Act of 1976 (or any successor copyright statute), as amended, all common law copyrights and all other intellectual property rights acknowledged by law in the Project Designs and work product developed under this Contract. Copies may be retained by Engineer. Engineer shall be liable to County for any loss or damage to any such documents while they are in the possession of or while being worked upon by Engineer or anyone connected with Engineer, including agents, employees, Engineers or subcontractors/subconsultants. All documents so lost or damaged shall be replaced or restored by Engineer without cost to County.

Upon execution of this Contract, Engineer grants to County permission to reproduce Engineer's work and documents for purposes of constructing, using and maintaining the Project, provided that County shall comply with its obligations, including prompt payment of all sums when due, under this Contract. Engineer shall obtain similar permission from Engineer's



subcontractors/subconsultants consistent with this Contract. If and upon the date Engineer is adjudged in default of this Contract, County is permitted to authorize other similarly credentialed design professionals to reproduce and, where permitted by law, to make changes, corrections or additions to the work and documents for the purposes of completing, using and maintaining the Project.

County shall not assign, delegate, sublicense, pledge or otherwise transfer any permission granted herein to another party without the prior written consent of Engineer. However, County shall be permitted to authorize the contractor, subcontractors and material or equipment suppliers to reproduce applicable portions of the Engineering Work Products appropriate to and for use in the execution of the Work. Submission or distribution of Engineering Work Products to meet official regulatory requirements or for similar purposes in connection with the Project is permitted. Any unauthorized use of the Engineering Work Products shall be at County's sole risk and without liability to Engineer and its Engineers.

Prior to Engineer providing to County any Engineering Work Products in electronic form or County providing to Engineer any electronic data for incorporation into the Engineering Work Products, County and Engineer shall by separate written contract set forth the specific conditions governing the format of such Engineering Work Products or electronic data, including any special limitations not otherwise provided in this Contract. Any electronic files are provided by Engineer for the convenience of County, and use of them is at County's sole risk. In the case of any defects in electronic files or any discrepancies between them and any hardcopy of the same documents prepared by Engineer, the hardcopy shall prevail. Only printed copies of documents conveyed by Engineer shall be relied upon.

Engineer shall have no liability for changes made to the drawings by other engineers subsequent to the completion of the Project. Any such change shall be sealed by the engineer making that change and shall be appropriately marked to reflect what was changed or modified.

## **ARTICLE 16**

### **PERSONNEL, EQUIPMENT AND MATERIAL**

Engineer shall furnish and maintain, at its own expense, quarters for the performance of all Engineering Services, and adequate and sufficient personnel and equipment to perform the Engineering Services as required. All employees of Engineer shall have such knowledge and experience as will enable them to perform the duties assigned to them. Any employee of Engineer who, in the reasonable opinion of County, is incompetent or whose conduct becomes detrimental to the Engineering Services shall immediately be removed from association with the Project when so instructed by County. Engineer certifies that it presently has adequate qualified personnel in its employment for performance of the Engineering Services required under this Contract, or will obtain such personnel from sources other than County. Engineer may not change the Project Manager without prior written consent of County.



## **ARTICLE 17**

### **SUBCONTRACTING**

Engineer shall not assign, subcontract or transfer any portion of the Engineering Services under this Contract without prior written approval from County. All subcontracts shall include the provisions required in this Contract. No subcontract shall relieve Engineer of any responsibilities under this Contract.

## **ARTICLE 18**

### **REVIEW OF ENGINEERING SERVICES**

Engineer's Engineering Services will be reviewed by County under its applicable technical requirements and procedures.

**A. Completion.** Reports, plans, specifications, and supporting documents shall be submitted by Engineer on or before the dates specified in the applicable Work Authorization or Supplemental Work Authorization related thereto. Upon receipt of same, the submission shall be checked for completion. "Completion" or "Complete" shall be defined as all of the required items, as set out in the applicable Work Authorization, have been included in compliance with the requirements of this Contract. The completeness of any Engineering Services submitted to County shall be determined by County within thirty (30) days of such submittal and County shall notify Engineer in writing within such thirty (30) day period if such Engineering Services have been found to be incomplete. If the submission is Complete, County shall notify Engineer and County's technical review process will begin.

If the submission is not Complete, County shall notify Engineer, who shall perform such professional services as are required to complete the Engineering Services and resubmit it to County. This process shall be repeated until a submission is Complete.

**B. Acceptance.** County shall review the completed Engineering Services for compliance with this Contract. If necessary, the completed Engineering Services shall be returned to Engineer, who shall perform any required Engineering Services and resubmit it to County. This process shall be repeated until the Engineering Services are Accepted. "Acceptance" or "Accepted" shall mean that in the County's reasonable opinion, substantial compliance with the requirements of this Contract has been achieved.

**C. Final Approval.** After Acceptance, Engineer shall perform any required modifications, changes, alterations, corrections, redesigns, and additional work necessary to receive Final Approval by the County. "Final Approval" in this sense shall mean formal recognition that the Engineering Services have been fully carried out.

**D. Errors and Omissions.** After Final Approval, Engineer shall, without additional compensation, perform any work required as a result of Engineer's development of the work which is found to be in error or omission due to Engineer's negligence. However, any work required or occasioned for the convenience of County after Final Approval shall be paid for as Additional Engineering Services.

**E. Disputes Over Classifications.** In the event of any dispute over the classification of Engineer's Engineering Services as Complete, Accepted, or having attained Final Approved under this Contract, the decision of the County shall be final and binding on Engineer, subject to any civil remedy or determination otherwise available to the parties and deemed appropriate by the parties.

**F. County's Reliance on Engineer.** ENGINEER'S DUTIES AS SET FORTH HEREIN SHALL AT NO TIME BE IN ANY WAY DIMINISHED BY REASON OF ANY REVIEW, EVALUATION OR APPROVAL BY THE COUNTY NOR SHALL THE ENGINEER BE RELEASED FROM ANY LIABILITY BY REASON OF SUCH REVIEW, EVALUATION OR APPROVAL BY THE COUNTY, IT BEING UNDERSTOOD THAT THE COUNTY AT ALL TIMES IS ULTIMATELY RELYING UPON THE ENGINEER'S SKILL, ABILITY AND KNOWLEDGE IN PERFORMING THE ENGINEERING SERVICES REQUIRED HEREUNDER.

## **ARTICLE 19**

### **VIOLATION OF CONTRACT TERMS/BREACH OF CONTRACT**

Violation of contract terms or breach of contract by Engineer shall be grounds for termination of this Contract, and any increased costs arising from Engineer's default, breach of contract, or violation of contract terms shall be paid by Engineer.

## **ARTICLE 20**

### **TERMINATION**

This Contract may be terminated as set forth below.

- A.** By mutual agreement and consent, in writing, of both parties.
- B.** By County, by notice in writing to Engineer, as a consequence of failure by Engineer to perform the Engineering Services set forth herein in a satisfactory manner.
- C.** By either party, upon the failure of the other party to fulfill its obligations as set forth herein.
- D.** By County, for reasons of its own and not subject to the mutual consent of Engineer, upon not less than thirty (30) days' written notice to Engineer.
- E.** By satisfactory completion of all Engineering Services and obligations described herein.

Should County terminate this Contract as herein provided, no fees other than fees due and payable at the time of termination plus reimbursable expenses incurred shall thereafter be paid to Engineer. In determining the value of the Engineering Services performed by Engineer prior to termination, County shall be the sole judge. Compensation for Engineering Services at termination will be based on a percentage of the Engineering Services completed at that time. Should County terminate this Contract under Subsection (D) immediately above, then the amount charged during the thirty-day notice period shall not exceed the amount charged during the preceding thirty (30) days.

If Engineer defaults in the performance of this Contract or if County terminates this Contract for fault on the part of Engineer, then County shall give consideration to the actual costs incurred by Engineer in performing the Engineering Services to the date of default, the amount of Engineering Services required which was satisfactorily completed to date of default, the value of the Engineering Services which are usable to County, the cost to County of employing another firm to complete the Engineering Services required and the time required to do so, and other factors which affect the value to County of the Engineering Services performed at the time of default.

The termination of this Contract and payment of an amount in settlement as prescribed above shall extinguish all rights, duties, and obligations of County under this Contract. If the termination of this Contract is due to the failure of Engineer to fulfill his/her/its contractual obligations, then County may take over the Project and prosecute the Engineering Services to completion. In such case, Engineer shall be liable to County for any additional and reasonable costs incurred by County.

Engineer shall be responsible for the settlement of all contractual and administrative issues arising out of any procurements made by Engineer in support of the Engineering Services under this Contract.

## **ARTICLE 21**

### **COMPLIANCE WITH LAWS**

**A. Compliance.** Engineer shall comply with all applicable federal, state and local laws, statutes, codes, ordinances, rules and regulations, and the orders and decrees of any court, or administrative bodies or tribunals in any manner affecting the performance of this Contract, including without limitation, minimum/maximum salary and wage statutes and regulations, and licensing laws and regulations. Engineer shall furnish County with satisfactory proof of his/her/its compliance.

Engineer shall further obtain all permits and licenses required in the performance of the Engineering Services contracted for herein.

**B. Taxes.** Engineer will pay all taxes, if any, required by law arising by virtue of the Engineering Services performed hereunder. County is qualified for exemption pursuant to the provisions of Section 151.309 of the Texas Limited Sales, Excise, and Use Tax Act.

## **ARTICLE 22**

### **INDEMNIFICATION**

ENGINEER AGREES, TO THE FULLEST EXTENT PERMITTED BY LAW, TO INDEMNIFY AND HOLD THE COUNTY HARMLESS FROM AND AGAINST ANY AND ALL LIABILITIES, LOSSES, PENALTIES, JUDGMENTS, CLAIMS, LAWSUITS, DAMAGES, COSTS AND EXPENSES, INCLUDING, BUT NOT LIMITED TO, ATTORNEYS' FEES, ("LOSSES") TO THE EXTENT SUCH LOSSES ARE CAUSED BY OR RESULTS FROM AN NEGLIGENT ACT OR OMISSION, NEGLIGENCE, OR INTENTIONAL TORT COMMITTED BY ENGINEER,

ENGINEER'S EMPLOYEES, AGENTS, OR ANY OTHER PERSON OR ENTITY UNDER CONTRACT WITH ENGINEER INCLUDING, WITHOUT LIMITATION, ENGINEER'S SUBCONSULTANTS, OR ANY OTHER ENTITY OVER WHICH ENGINEER EXERCISES CONTROL.

ENGINEER FURTHER AGREES, TO THE FULLEST EXTENT PERMITTED BY LAW, TO INDEMNIFY AND HOLD THE COUNTY HARMLESS FROM ANY AND ALL LIABILITIES, LOSSES, PENALTIES, JUDGMENTS, CLAIMS, LAWSUITS, DAMAGES, COSTS AND EXPENSES, INCLUDING, BUT NOT LIMITED TO, ATTORNEYS' FEES, ("LOSSES") TO THE EXTENT SUCH LOSSES ARE CAUSED BY OR RESULTS FROM ENGINEER'S FAILURE TO PAY ENGINEER'S EMPLOYEES, SUBCONTRACTORS, SUBCONSULTANTS, OR SUPPLIERS, IN CONNECTION WITH ANY OF THE WORK PERFORMED OR TO BE PERFORMED UNDER THIS CONTRACT BY ENGINEER.

ENGINEER FURTHER AGREES TO INDEMNIFY AND HOLD THE COUNTY HARMLESS FROM ANY AND ALL LIABILITIES, LOSSES, PENALTIES, CLAIMS, LAWSUITS, DAMAGES, COSTS AND EXPENSES, INCLUDING, BUT NOT LIMITED TO, ATTORNEYS' FEES, ("LOSSES") TO THE EXTENT SUCH LOSSES ARE CAUSED BY OR RESULTS FROM THE INFRINGEMENT OF ANY INTELLECTUAL PROPERTY ARISING OUT OF THE USE OF ANY PLANS, DESIGN, DRAWINGS, OR SPECIFICATIONS FURNISHED BY ENGINEER IN THE PERFORMANCE OF THIS CONTRACT.

THE LIMITS OF INSURANCE REQUIRED IN THIS CONTRACT AND/OR THE CONTRACT DOCUMENTS SHALL NOT LIMIT ENGINEER'S OBLIGATIONS UNDER THIS SECTION. THE TERMS AND CONDITIONS CONTAINED IN THIS SECTION SHALL SURVIVE THE TERMINATION OF THE CONTRACT AND/OR CONTRACT DOCUMENTS OR THE SUSPENSION OF THE WORK HEREUNDER. TO THE EXTENT THAT ANY LIABILITIES, PENALTIES, DEMANDS, CLAIMS, LAWSUITS, LOSSES, DAMAGES, COSTS AND EXPENSES ARE CAUSED IN PART BY THE ACTS OF THE COUNTY OR THIRD PARTIES FOR WHOM ENGINEER IS NOT LEGALLY LIABLE, ENGINEER'S OBLIGATIONS SHALL BE IN PROPORTION TO ENGINEER'S FAULT. THE OBLIGATIONS HEREIN SHALL ALSO EXTEND TO ANY ACTIONS BY THE COUNTY TO ENFORCE THIS INDEMNITY OBLIGATION.

IN THE EVENT THAT CONTRACTORS INITIATE LITIGATION AGAINST THE COUNTY IN WHICH THE CONTRACTOR ALLEGES DAMAGES AS A RESULT OF ANY NEGLIGENT ACTS, ERRORS OR OMISSIONS OF ENGINEER, ITS EMPLOYEES, AGENTS, SUBCONTRACTORS, SUBCONSULTANTS, OR SUPPLIERS, OR OTHER ENTITIES OVER WHICH ENGINEER EXERCISES CONTROL, INCLUDING, BUT NOT LIMITED TO, DEFECTS, ERRORS, OR OMISSIONS, THEN THE COUNTY SHALL HAVE THE RIGHT TO JOIN ENGINEER IN ANY SUCH PROCEEDINGS AT THE COUNTY'S COST. ENGINEER SHALL ALSO HOLD THE COUNTY HARMLESS AND INDEMNIFY THE COUNTY TO THE EXTENT THAT ENGINEER, ANY OF ITS EMPLOYEES, AGENTS, SUBCONTRACTORS, SUBCONSULTANTS, OR SUPPLIERS, OR OTHER ENTITIES OVER WHICH ENGINEER EXERCISES CONTROL, CAUSED SUCH DAMAGES TO CONTRACTOR, INCLUDING ANY AND ALL COSTS AND ATTORNEYS' FEES INCURRED BY THE COUNTY IN CONNECTION WITH THE DEFENSE OF ANY CLAIMS WHERE ENGINEER, ITS EMPLOYEES, AGENTS, SUBCONTRACTORS, SUBCONSULTANTS, OR SUPPLIERS, OR OTHER ENTITIES OVER WHICH ENGINEER EXERCISES CONTROL, ARE ADJUDICATED AT FAULT.

## **ARTICLE 23**

## **ENGINEER'S RESPONSIBILITIES**

Engineer shall be responsible for the accuracy of his/her/its Engineering Services and shall promptly make necessary revisions or corrections to its work product resulting from errors, omissions, or negligent acts, and same shall be done without compensation. County shall determine Engineer's responsibilities for all questions arising from design errors and/or omissions, subject to the dispute resolution provisions of Article 33. Engineer shall not be relieved of responsibility for subsequent correction of any such errors or omissions in its work product, or for clarification of any ambiguities until after the construction phase of the Project has been completed.

## **ARTICLE 24** **ENGINEER'S SEAL**

The responsible engineer shall sign, seal and date all appropriate engineering submissions to County in accordance with the Texas Engineering Practice Act and the rules of the State Board of Registration for Professional Engineers.

## **ARTICLE 25** **INSURANCE**

Engineer must comply with the following insurance requirements at all times during this Contract:

**A. Coverage Limits.** Engineer, at Engineer's sole cost, shall purchase and maintain during the entire term while this Contract is in effect the following insurance:

1. Worker's Compensation in accordance with statutory requirements.
2. Commercial General Liability Insurance with a combined minimum Bodily Injury and Property Damage limits of \$1,000,000.00 per occurrence and \$2,000,000.00 in the aggregate.
3. Automobile Liability Insurance for all owned, non-owned, and hired vehicles with combined minimum limits for Bodily Injury and Property Damage limits of \$500,000.00 per occurrence and \$1,000,000.00 in the aggregate.
4. Professional Liability Errors and Omissions Insurance in the amount of \$2,000,000.00 per claim.

**B. Additional Insureds; Waiver of Subrogation.** County, its directors, officers and employees shall be added as additional insureds under policies listed under (2) and (3) above, and on those policies where County, its directors, officers and employees are additional insureds, such insurance shall be primary and any insurance maintained by County shall be excess and not contribute with it. Such policies shall also include waivers of subrogation in favor of County.

**C. Premiums and Deductible.** Engineer shall be responsible for payment of premiums for all of the insurance coverages required under this section. Engineer further agrees that for each claim, suit or action made against insurance provided hereunder, with respect to all

matters for which the Engineer is responsible hereunder, Engineer shall be solely responsible for all deductibles and self-insured retentions. Any deductibles or self-insured retentions over \$50,000 in the Engineer's insurance must be declared and approved in writing by County in advance.

**D. Commencement of Work.** Engineer shall not commence any field work under this Contract until he/she/it has obtained all required insurance and such insurance has been approved by County. As further set out below, Engineer shall not allow any subcontractor/subconsultant(s) to commence work to be performed in connection with this Contract until all required insurance has been obtained and approved and such approval shall not be unreasonably withheld. Approval of the insurance by County shall not relieve or decrease the liability of Engineer hereunder.

**E. Insurance Company Rating.** The required insurance must be written by a company approved to do business in the State or Texas with a financial standing of at least an A-rating, as reflected in Best's insurance ratings or by a similar rating system recognized within the insurance industry at the time the policy is issued.

**F. Certification of Coverage.** Engineer shall furnish County with a certification of coverage issued by the insurer. Engineer shall not cause any insurance to be canceled nor permit any insurance to lapse. **In addition to any other notification requires set forth hereunder, Engineer shall also notify County, within twenty-four (24) hours of receipt, of any notices of expiration, cancellation, non-renewal, or material change in coverage it receives from its insurer.**

**G. No Arbitration.** It is the intention of the County and agreed to and hereby acknowledged by the Engineer, that no provision of this Contract shall be construed to require the County to submit to mandatory arbitration in the settlement of any claim, cause of action or dispute, except as specifically required in direct connection with an insurance claim or threat of claim under an insurance policy required hereunder or as may be required by law or a court of law with jurisdiction over the provisions of this Contract.

**H. Subcontractor/Subconsultant's Insurance.** Without limiting any of the other obligations or liabilities of Engineer, Engineer shall require each subcontractor/subconsultant performing work under this Contract (to the extent a subcontractor/subconsultant is allowed by County) to maintain during the term of this Contract, at the subcontractor/subconsultant's own expense, the same stipulated minimum insurance required in this Article above, including the required provisions and additional policy conditions as shown below in this Article.

Engineer shall obtain and monitor the certificates of insurance from each subcontractor/subconsultant in order to assure compliance with the insurance requirements. Engineer must retain the certificates of insurance for the duration of this Contract, and shall have the responsibility of enforcing these insurance requirements among its subcontractor/subconsultants. County shall be entitled, upon request and without expense, to receive copies of these certificates of insurance.

**I. Insurance Policy Endorsements.** Each insurance policy shall include the following conditions by endorsement to the policy:

1. County shall be notified thirty (30) days prior to the expiration, cancellation, non-renewal or any material change in coverage, and such notice thereof shall be given to County by certified mail to:

Williamson County Auditor  
c/o: Pam Navarrette  
710 Main Street, Suite 301  
Georgetown, Texas 78626

With copy to: Williamson County Dept. of Infrastructure  
Attn: Director of Road & Bridge  
3151 SE Inner Loop, Suite B  
Georgetown, Texas 78626

2. The policy clause "Other Insurance" shall not apply to any insurance coverage currently held by County, to any such future coverage, or to County's Self-Insured Retentions of whatever nature.

**J. Cost of Insurance.** The cost of all insurance required herein to be secured and maintained by Engineer shall be borne solely by Engineer, with certificates of insurance evidencing such minimum coverage in force to be filed with County. Such Certificates of Insurance are evidenced as **Exhibit F** herein entitled "Certificates of Insurance."

## **ARTICLE 26** **COPYRIGHTS**

County shall have the royalty-free, nonexclusive and irrevocable right to reproduce, publish or otherwise use, and to authorize others to use, any reports developed by Engineer for governmental purposes.

## **ARTICLE 27** **SUCCESSORS AND ASSIGNS**

This Contract shall be binding upon and inure to the benefit of the parties hereto, their successors, lawful assigns, and legal representatives. Engineer may not assign, sublet or transfer any interest in this Contract, in whole or in part, by operation of law or otherwise, without obtaining the prior written consent of County.



**ARTICLE 28**  
**SEVERABILITY**

In the event any one or more of the provisions contained in this Contract shall for any reason be held to be invalid, illegal or unenforceable in any respect, then such invalidity, illegality or unenforceability shall not affect any other provision thereof and this Contract shall be construed as if such invalid, illegal or unenforceable provision had never been contained herein.

**ARTICLE 29**  
**PRIOR AGREEMENTS SUPERSEDED**

This Contract constitutes the sole agreement of the parties hereto, and supersedes any prior understandings or written or oral contracts between the parties respecting the subject matter defined herein. This Contract may only be amended or supplemented by mutual agreement of the parties hereto in writing.

**ARTICLE 30**  
**ENGINEER'S ACCOUNTING RECORDS**

Engineer agrees to maintain, for a period of three (3) years after final payment under this Contract, detailed records identifying each individual performing the Engineering Services, the date or dates the services were performed, the applicable hourly rates, the total amount billed for each individual and the total amount billed for all persons, records of reimbursable costs and expenses of other providers and provide such other details as may be requested by the County Auditor for verification purposes. Engineer agrees that County or its duly authorized representatives shall, until the expiration of three (3) years after final payment under this Contract, have access to and the right to examine and photocopy any and all books, documents, papers and records of Engineer which are directly pertinent to the services to be performed under this Contract for the purposes of making audits, examinations, excerpts, and transcriptions. Engineer further agrees that County shall have access during normal working hours to all necessary Engineer facilities and shall be provided adequate and appropriate work space in order to conduct audits in compliance with the provisions of this section. County shall give Engineer reasonable advance notice of intended audits.

**ARTICLE 31**  
**NOTICES**

All notices to either party by the other required under this Contract shall be personally delivered or mailed to such party at the following respective addresses:

**County:** Williamson County Judge  
710 Main Street, Suite 101  
Georgetown, Texas 78626

With copy to: Williamson County Dept. of Infrastructure

Attn: Director of Road & Bridge  
3151 SE Inner Loop, Suite B  
Georgetown, Texas 78626

and to: Office of General Counsel  
Williamson County  
710 Main Street, Suite 102  
Georgetown, Texas 78626

**Engineer:** Mike Nichols, P.E.  
Freese and Nichols, Inc.  
10431 Morado Circle, Building 5, Suite 300  
Austin, TX 78759

## **ARTICLE 32**

### **GENERAL PROVISIONS**

**A. Time is of the Essence.** Subject to Article 3 hereof, Engineer understands and agrees that time is of the essence and that any failure of Engineer to complete the Engineering Services for each phase of this Contract within the agreed work schedule set out in the applicable Work Authorization may constitute a material breach of this Contract. Engineer shall be fully responsible for his/her/its delays or for failures to use his/her/its reasonable efforts in accordance with the terms of this Contract and the Engineer's standard of performance as defined herein. Where damage is caused to County due to Engineer's negligent failure to perform County may accordingly withhold, to the extent of such damage, Engineer's payments hereunder without waiver of any of County's additional legal rights or remedies.

**B. Force Majeure.** Neither County nor Engineer shall be deemed in violation of this Contract if prevented from performing any of their obligations hereunder by reasons for which they are not responsible or circumstances beyond their control. However, notice of such impediment or delay in performance must be timely given, and all reasonable efforts undertaken to mitigate its effects.

**C. Enforcement and Venue.** This Contract shall be enforceable in Georgetown, Williamson County, Texas, and if legal action is necessary by either party with respect to the enforcement of any or all of the terms or conditions herein, exclusive venue for same shall lie in Williamson County, Texas. This Contract shall be governed by and construed in accordance with the laws and court decisions of the State of Texas excluding, however, its choice of law rules.

**D. Standard of Performance.** The standard of care for all professional engineering, consulting and related services performed or furnished by Engineer and its employees under this

Contract will be the care and skill ordinarily used by members of Engineer's profession practicing under the same or similar circumstances at the same time and in the same locality.

**E. Opinion of Probable Cost.** Any opinions of probable Project cost or probable construction cost provided by Engineer are made on the basis of information available to Engineer and on the basis of Engineer's experience and qualifications and represents its judgment as an experienced and qualified professional engineer. However, since Engineer has no control over the cost of labor, materials, equipment or services furnished by others, or over the contractor(s') methods of determining prices, or over competitive bidding or market conditions, Engineer does not guarantee that proposals, bids or actual Project or construction cost will not vary from opinions of probable cost Engineer prepares.

**F. Opinions and Determinations.** Where the terms of this Contract provide for action to be based upon opinion, judgment, approval, review, or determination of either party hereto, such terms are not intended to be and shall never be construed as permitting such opinion, judgment, approval, review, or determination to be arbitrary, capricious, or unreasonable.

**G. Reports of Accidents.** Within 24 hours after Engineer becomes aware of the occurrence of any accident or other event which results in, or might result in, injury to the person or property of any third person (other than an employee of the Engineer), whether or not it results from or involves any action or failure to act by the Engineer or any employee or agent of the Engineer and which arises in any manner from the performance of this Contract, the Engineer shall send a written report of such accident or other event to the County, setting forth a full and concise statement of the facts pertaining thereto. The Engineer shall also immediately send the County a copy of any summons, subpoena, notice, or other documents served upon the Engineer, its agents, employees, or representatives, or received by it or them, in connection with any matter before any court arising in any manner from the Engineer's performance of work under this Contract.

**H. Gender, Number and Headings.** Words of any gender used in this Contract shall be held and construed to include any other gender, and words in the singular number shall be held to include the plural, unless the context otherwise requires. The headings and section numbers are for convenience only and shall not be considered in interpreting or construing this Contract.

**I. Construction.** Each party hereto acknowledges that it and its counsel have reviewed this Contract and that the normal rules of construction are not applicable and there will be no presumption that any ambiguities will be resolved against the drafting party in the interpretation of this Contract.

**J. Independent Contractor Relationship.** Both parties hereto, in the performance of this Contract, shall act in an individual capacity and not as agents, employees, partners, joint ventures or associates of one another. The employees or agents of one party shall not be deemed or construed to be the employees or agents of the other party for any purposes whatsoever.

**K. No Waiver of Immunities.** Nothing in this Contract shall be deemed to waive, modify or amend any legal defense available at law or in equity to County, its past or present

officers, employees, or agents or employees, nor to create any legal rights or claim on behalf of any third party. County does not waive, modify, or alter to any extent whatsoever the availability of the defense of governmental immunity under the laws of the State of Texas and of the United States.

**L. Texas Public Information Act.** To the extent, if any, that any provision in this Contract is in conflict with Tex. Gov't Code 552.001 et seq., as amended (the "Public Information Act"), the same shall be of no force or effect. Furthermore, it is expressly understood and agreed that County, its officers and employees may request advice, decisions and opinions of the Attorney General of the State of Texas in regard to the application of the Public Information Act to any items or data furnished to County as to whether or not the same are available to the public. It is further understood that County's officers and employees shall have the right to rely on the advice, decisions and opinions of the Attorney General, and that County, its officers and employees shall have no liability or obligation to any party hereto for the disclosure to the public, or to any person or persons, of any items or data furnished to County by a party hereto, in reliance of any advice, decision or opinion of the Attorney General of the State of Texas.

**M. Governing Terms and Conditions.** If there is an irreconcilable conflict between the terms and conditions set forth in this Contract or any Contract Amendment and the terms and conditions set forth in any Exhibit, Appendix, Work Authorization or Supplemental Work Authorization to this Contract, the terms and conditions set forth in this Contract or any Contract Amendment shall control over the terms and conditions set forth in any Exhibit, Appendix, Work Authorization or Supplemental Work Authorization to this Contract.

**N. Meaning of Day.** For purposes of this Contract, all references to a "day" or "days" shall mean a calendar day or calendar days.

**O. Appropriation of Funds by County.** County believes it has sufficient funds currently available and authorized for expenditure to finance the costs of this Contract. Engineer understands and agrees that County's payment of amounts under this Contract is contingent on the County receiving appropriations or other expenditure authority sufficient to allow the County, in the exercise of reasonable administrative discretion, to continue to make payments under this Contract. It is further understood and agreed by Engineer that County shall have the right to terminate this Contract at the end of any County fiscal year if the governing body of County does not appropriate sufficient funds as determined by County's budget for the fiscal year in question. County may effect such termination by giving written notice of termination to Engineer.

**P. Termination of Work Authorization.** Should it be determined that the progress in the production of Engineer's services and work does not satisfy the requirements of the approved Work Authorization as provided by Exhibit "C", attached hereto, the County shall review the approved Work Authorization with the Engineer to determine the corrective action needed, including potential termination of such Work Authorization by Williamson County. Additionally, if an approved Work Authorization has not been completed by the end of the applicable County fiscal year under this contract and the Williamson County Commissioners Court does not provide for funding through its budgetary oversight for the subsequent County fiscal year, Williamson County reserves the right to terminate such Work Authorization at its discretion.

### **ARTICLE 33**

#### **DISPUTE RESOLUTION**

Except as otherwise specifically set forth herein, County and Engineer shall work together in good faith to resolve any controversy, dispute or claim between them which arises out of or relates to this Contract, whether stated in tort, contract, statute, claim for benefits, bad faith, professional liability or otherwise ("Claim"). If the parties are unable to resolve the Claim within thirty (30) days following the date in which one party sent written notice of the Claim to the other party, and if a party wishes to pursue the Claim, such Claim shall be addressed through non-binding mediation. A single mediator engaged in the practice of law, who is knowledgeable about subject matter of this Contract, shall be selected by agreement of the parties and serve as the mediator. Any mediation under this Contract shall be conducted in Williamson County, Texas. The mediator's fees shall be borne equally between the parties. Such non-binding mediation is a condition precedent to seeking redress in a court of competent jurisdiction, but this provision shall not preclude either party from filing a lawsuit in a court of competent jurisdiction prior to completing a mediation if necessary to preserve the statute of limitations, in which case such lawsuit shall be stayed pending completion of the mediation process contemplated herein. This provision shall survive the termination of the Contract.

### **ARTICLE 34**

#### **EQUAL OPPORTUNITY IN EMPLOYMENT**

During the performance of this Contract and to the extent the Project is a federally funded project, Engineer, for itself, its assignees and successors in interest agrees as follows:

**A. Compliance with Regulations.** The Engineer shall comply with the Regulations relative to nondiscrimination in Federally-assisted programs of the Department of Transportation (hereinafter, "DOT") Title 49, Code of Federal Regulations, Part 21, as they may be amended from time to time, (hereinafter referred to as the Regulations), which are herein incorporated by reference and made a part of this Contract.

**B. Nondiscrimination.** The Engineer, with regard to the work performed by it during the Contract, shall not discriminate on the grounds of race, color, or national origin in the selection and retention of subcontractors/subconsultants, including procurements of materials and leases of equipment. The Engineer shall not participate either directly or indirectly in the discrimination prohibited by section 21.5 of the Regulations, including employment practices when the contract covers a program set forth in Appendix B of the Regulations.

**C. Solicitations for Subcontracts, Including Procurements of Materials and Equipment.** In all solicitations either by competitive bidding or negotiation made by the Engineer for work to be performed under a subcontract, including procurements of materials or leases of equipment, each potential subcontractor/subconsultant or supplier shall be notified by the Engineer of the Engineer's obligations under this Contract and the Regulations relative to nondiscrimination on the grounds of race, color, or national origin.

**D. Information and Reports.** The Engineer shall provide all information and reports required by the Regulations or directives issued pursuant thereto, and shall permit access to its books, records, accounts, other sources of information, and its facilities as may be determined by the County (referred to in this Article as the "Recipient") or the Texas Department of Transportation to be pertinent to ascertain compliance with such Regulations, orders and instructions. Where any information required of a contractor is in the exclusive possession of another who fails or refuses to furnish this information the Engineer shall so certify to the Recipient, or the Texas Department of Transportation as appropriate, and shall set forth what efforts it has made to obtain the information.

**E. Sanctions for Noncompliance.** In the event of the Engineer's noncompliance with the nondiscrimination provisions of this contract, the Recipient shall impose such contract sanctions as it or the Texas Department of Transportation may determine to be appropriate, including, but not limited to:

1. withholding of payments to the Engineer under the contract until the Engineer complies, and/or;
2. cancellation, termination or suspension of the Contract, in whole or in part.

**F. Incorporation of Provisions.** The Engineer shall include the provisions of Subsections (A) through (F) above in every subcontract, including procurements of materials and leases of equipment, unless exempt by the Regulations, or directives issued pursuant thereto. The Engineer shall take such action with respect to any subcontract or procurement as the Recipient or the Texas Department of Transportation may direct as a means of enforcing such provisions including sanctions for non-compliance: Provided, however, that, in the event a contractor becomes involved in, or is threatened with, litigation with a subcontractor/subconsultant or supplier as a result of such direction, the Engineer may request the Recipient to enter into such litigation to protect the interests of the Recipient, and, in addition, the Engineer may request the United States to enter into such litigation to protect the interests of the United States.

### **SIGNATORY WARRANTY**

The undersigned signatory for Engineer hereby represents and warrants that the signatory is an officer of the organization for which he/she has executed this Contract and that he/she has full and complete authority to enter into this Contract on behalf of the firm. The above-stated representations and warranties are made for the purpose of inducing County to enter into this Contract.

**IN WITNESS WHEREOF,** County has caused this Contract to be signed in its name by its duly authorized County Judge, as has Engineer, signing by and through its duly authorized representative(s), thereby binding the parties hereto, their successors, assigns and representatives for the faithful and full performance of the terms and provisions hereof, to be effective as of the date of the last party's execution below. NO OFFICIAL, EMPLOYEE, AGENT, OR REPRESENTATIVE OF THE COUNTY HAS ANY AUTHORITY, EITHER EXPRESS OR IMPLIED, TO AMEND, TERMINATE OR MODIFY THIS CONTRACT, EXCEPT PURSUANT TO SUCH EXPRESS AUTHORITY AS MAY BE GRANTED BY THE WILLIAMSON COUNTY COMMISSIONERS COURT.



**COUNTY**

WILLIAMSON COUNTY, TEXAS

By: 

Dan A. Gattis, County Judge

Date: 04-07, 20 16

**ENGINEER**

FREESE AND NICHOLS

By 

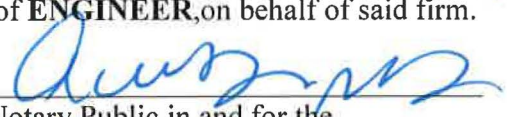
Printed Name: Victor M. Vasquez, P.E.

Title: Principal

Date: March 17, 20 16

SUBSCRIBED and sworn to before me the undersigned authority by victor Vasquez  
the Principal of **ENGINEER**, on behalf of said firm.



  
Notary Public in and for the  
State of Texas

My commission expires: 5/1/17



### **LIST OF EXHIBITS ATTACHED**

- |                      |   |
|----------------------|---|
| (1) <b>Exhibit A</b> | Debarment Certification                       |
| (2) <b>Exhibit B</b> | Engineering Services                          |
| (3) <b>Exhibit C</b> | Work Authorization                            |
| (4) <b>Exhibit D</b> | Rate Schedule                                 |
| (5) <b>Exhibit E</b> | Williamson County Vendor Reimbursement Policy |
| (6) <b>Exhibit F</b> | Certificates of Insurance                     |

**EXHIBIT A**  
**DEBARMENT CERTIFICATION**

STATE OF TEXAS

§

COUNTY OF WILLIAMSON

§

§

I, the undersigned, being duly sworn or under penalty of perjury under the laws of the United States and the State of Texas, certifies that Engineer and its principals:

(a) Are not presently debarred, suspended, proposed for debarment, declared ineligible or voluntarily excluded from covered transactions by any federal department or agency:

(b) Have not within a three-year period preceding this proposal been convicted of or had a civil judgment rendered against them for commission of fraud or a criminal offense in connection with obtaining, attempting to obtain, or performing a public\* transaction or contract under a public transaction; violation of federal or state antitrust statutes or commission of embezzlement, theft, forgery, bribery, falsification or destruction of records, making false statements, or receiving stolen property;

(c) Are not presently indicted for or otherwise criminally or civilly charged by a governmental entity\* with commission of any of the offenses enumerated in paragraph (1)(b) of this certification;

(d) Have not within a three-year period preceding this application/proposal had one or more public transactions\* terminated for cause or default; and

(e) Have not been disciplined or issued a formal reprimand by any State agency for professional accreditation within the past three years.

Freeze and Nichols, Inc.

Name of Firm

[Signature]

Signature of Certifying Official

Victor M. Vásquez

Printed Name of Certifying Official

Principal

Title of Certifying Official

March 17, 2016

Date

(2) Where the PROVIDER is unable to certify to any of the statements in this certification, such PROVIDER shall attach an explanation to this certification.

\* federal, state, or local

SUBSCRIBED and sworn to before me the undersigned authority by Victor Vasquez  
the Principal of Engineer, on behalf of  
said firm.



Amanda N Griffin  
Notary Public in and for the  
State of Texas

My commission expires: 5/1/17

## **EXHIBIT B**

### **ENGINEERING SERVICES**

#### **Project Description**

San Gabriel Ranch Road (SGRR) is located in Williamson County on Lackey Creek. The roadway suffered significant damage in recent floods and is currently closed to traffic. The road embankment creates a small lake just upstream of SGRR. This lake has very limited storage capacity and the control structures consist of one ~27-inch corrugated metal pipe for a principal spillway and two ~30-inch concrete pipes for the emergency spillway. The drainage area is approximately five square miles and the spillways are inadequate for passing anything other than very small storms. When the pipes are overwhelmed, the roadway embankment is then subjected to overtopping. This overtopping recently resulted in damage to the roadway and subsequent closure of the roadway.

The roadway embankment is classified as a dam by Texas Commission on Environmental Quality (TCEQ) and TCEQ has performed several inspections throughout the years. Williamson County does not own the dam but is responsible for the roadway. Williamson County has selected Freese and Nichols, Inc. to evaluate the frequent flooding of the roadway and develop possible alternatives to reduce the frequency of roadway overtopping and to provide erosion protection for the site. As part of the evaluation, Freese and Nichols, Inc. (FNI) will perform a high level review of the dam as it relates to TCEQ Dam Safety Criteria.

It is anticipated that there will be two Work Authorizations that will include, but not limited to, a Design Phase and a Construction Phase:

#### **A. DESIGN PHASE**

##### **Evaluation and Schematic Design**

1. Perform survey
  - a. Roadway profile and select cross sections of embankment
  - b. Flow line elevations for existing pipes and channel
  - c. Pond cross sections to determine storage capacity
  - d. 1-ft topo of the spillway approach channel
  - e. 1-ft topo of the river channel from the roadway to 100-feet downstream
2. Perform geotechnical Investigation
  - a. Perform four borings
  - b. Provide geotechnical witness logging of soil strata and characterizations
  - c. Perform geological reconnaissance of soil and bedrock exposures in the Lackey Creek channel between the spillway and its confluence with the North Fork San Gabriel River
  - d. Perform basic soil tests (Atterberg limits, minus 200, moisture contents) and penetrometer tests as appropriate

- e. Perform preliminary evaluation of dam embankment stability of existing dam in accordance with TCEQ Dam Safety Guidelines for steady-state and rapid drawdown loading conditions.
- 3. Perform hydrologic and hydraulic (H&H) analyses in accordance with TCEQ Dam Safety Guidelines and City of Austin Drainage Criteria Manual.
  - a. Evaluate drainage area and runoff characteristics for existing and ultimate development
  - b. Develop stage-storage-discharge rating curves to represent existing dam conditions
  - c. Develop peak reservoir stage, storage and discharge for 2 to 100-year recurrence intervals
  - d. Develop peak reservoir stage, storage and discharge for 75% PMF
- 4. Develop schematic design for three alternative repair concepts as follows:
  - a. Removing embankment at approximate location of original Lackey Creek stream channel and installation of bridge crossing Lackey Creek while keeping same roadway alignment.
  - b. Leaving dam hydraulics and roadway alignment unchanged, replace the principal spillway corrugated metal pipe, re-laying the existing concrete pipe, and providing channel and slope armoring at outfall of the present emergency spillway concrete pipes.
  - c. Removing the existing emergency spillway concrete pipes and installation of an emergency spillway structure to pass flows under the roadway and into a drop structure at the outfall, including armoring the outfall area as needed, replacing the principal spillway corrugated metal pipe. Evaluate and address seepage control and erosion along the embankment interface. Keep roadway elevations unchanged.
- 5. Evaluate the following for each alternative:
  - a. Peak reservoir stage, storage and discharge for 2-100-year recurrence intervals
  - b. Peak reservoir stage, storage and discharge for 75% PMF
  - c. Increased water levels in Lackey Creek from San Gabriel Ranch Road to confluence with San Gabriel River.
  - d. Opinion of probable construction costs
  - e. Permit requirements
- 6. Provide documentation of proposed alternatives
  - a. Document geotechnical results in Technical Memorandum
  - b. Document H&H results in Technical Memorandum
  - c. Summarize results of alternative analysis in Summary Report
  - d. Attend up to two (2) meetings with Williamson County staff to present results
  - e. Attend one (1) public meeting to inform area residents of concepts
- 7. Deliverables

- a. Geotechnical Results Technical Memorandum
- b. Hydrology and Hydraulics Technical Memorandum
- c. Alternative Summary Report
- d. Posters for public meeting

## **Design**

1. Environmental Permitting
  - a. Develop permitting strategy for selected alternative.
  - b. Site visit by Environmental Scientist
  - c. Coordination with Texas Historical Commission (THC).
  - d. Develop and submit a pre-construction notification (PCN) to USACE.
2. Prepare conceptual set of sketches for either alternative 4.b or 4.c based upon County's selection. The County has indicated previously that the bridge alternative is unlikely to be selected.
  - a. Provide proposed typical section and cross sections
  - b. Provide proposed plan and profile sketches
  - c. Provide proposed drainage feature sketches
  - d. Provide table of contents for technical specifications
3. Prepare 90% set of construction documents
  - a. Finalize
    1. Roadway grades and cross sections
    2. Grading plans
    3. Roadway details
    4. Detailing of all drainage structures
    5. Environmental Controls
  - b. Provide complete set of draft specifications
  - c. Provide opinion of probable construction cost
  - d. Submit plans and specifications to TCEQ Dam Safety
4. Develop final plans and specifications for bidding that incorporate County's latest comments
5. Submit Issued for Bid plans and specifications to County and TCEQ Dam Safety
6. Update OPCC for Issued for Bid set
7. Deliverables
  - a. Conceptual sketches, specification outline
  - b. 90% Plans, Specifications and Opinion of Probable Construction Cost
  - c. Issued-For-Bid Plans, Specifications and Opinion of Probable Construction Cost

## **Bid Phase**

1. Attend Pre-Bid Meeting
2. Prepare any necessary addenda

3. Attend Bid Opening
4. Assist County with bid evaluations

## **B. CONSTRUCTION PHASE**

FNI will proceed with the performance of construction phase services as described below. FNI will endeavor to protect COUNTY in providing these services; however, it is understood that FNI does not guarantee the Contractor's performance, nor is FNI responsible for supervision of the Contractor's operation and employees. FNI shall not be responsible for the means, methods, techniques, sequences or procedures of construction selected by the Contractor, or any safety precautions and programs relating in any way to the condition of the premises, the work of the Contractor or any Subcontractor. FNI shall not be responsible for the acts or omissions of any person (except its own employees or agents) at the Project site or otherwise performing any of the work of the Project.

The ENGINEER or ENGINEER OF RECORD shall be defined as the professional engineer responsible for the preparation, modification, and interpretation of the design documents for the project including evaluations, analyses, technical reports, plans and specifications.

The purpose of this phase is for FNI to provide the following professional engineering services to support the construction in accordance with Texas Administrative Code Title 30, Part 1, Chapter 299 Dams and Reservoirs. The overall construction schedule is assumed to be 120 calendar days. Any effort directly or indirectly related to a time extension to the CONTRACTOR and project duration will be an additional service for FNI.

General Construction Management Services shall include:

1. Prepare and provide COUNTY with five (5) sets of "Issued for Construction" construction plans and contract documents incorporating addenda changes. Provide TCEQ with one (1) copy of "Issued for Construction" documents.
2. Assist COUNTY in conducting pre-construction conference with the CONTRACTOR and review construction schedules prepared by the CONTRACTOR pursuant to the requirements of the construction contract. Coordinate communication procedures with COUNTY and CONTRACTOR.
3. Designated FNI staff that participated in the design phase shall visit the project site for up to four (4) visits to observe the general progress of the construction work, observe critical construction activities, and coordinate with the COUNTY'S Onsite Representative. In this effort FNI will endeavor to protect the COUNTY against defects and deficiencies in the work of CONTRACTOR and will report any observed deficiencies or non-conforming work in writing to the COUNTY. Visits to the site in excess of the number listed under this item are an additional service. The site visits under this task do not include attendance to monthly progress meetings or special technical support visits.
4. Attend monthly construction progress meetings (one-half day trip per meeting, 4 meetings total) separate from the site visits described above to evaluate overall progress, submittal status, and contract changes.



5. Interpret the intent of drawings and specifications for COUNTY and Contractor. Review key contractor's submittals for consistency with plans, specifications, and project requirements, including requests for information, modification requests, certified test results, and shop drawings in accordance with the requirements of the construction contract documents. Prepare design clarification responses required.
6. Submit monthly reports of construction progress to the COUNTY and TCEQ Dam Safety. Reports will describe construction progress in general terms and summarize project costs, construction schedule and pending and approved contract modifications. Report outline will be based on TCEQ Dam Safety Program guidelines for Design and Construction for Dams in Texas. Provide COUNTY and TCEQ with one (1) copy of monthly report.
7. Conduct, in company with COUNTY's representative, a substantial completion review of the Project for conformance with the design concept of the Project and general compliance with the Construction Contract Documents. Prepare a list of deficiencies to be corrected by the contractor before recommendation of final payment. Conduct a follow up final review to determine that items on the substantial completion checklist have been completed and are in accordance with Construction Contract Documents. Review and comment on the certificate of completion and the recommendation for final payment to the CONTRACTOR.
8. Revise the construction drawings in accordance with the information furnished to the COUNTY to by CONTRACTOR reflecting changes in the Project made during construction. "Record Drawings" shall be provided by FNI to the following:
  - a. COUNTY, three (3) sets of prints;
  - b. TCEQ, one (1) set of prints;
9. Submit Record Drawings within sixty (60) calendar days upon receipt of all documentation from CONTRACTOR of record changes. Submit project completion certificate per TCEQ requirements within 45 days of project substantial completion.

**Deliverables**

- d. Conceptual sketches, specification outline
- e. 90% Plans, Specifications and Opinion of Probable Construction Cost
- f. Issued-For-Bid Plans, Specifications and Opinion of Probable Construction Cost
- g. Issued-For-Construction Plans
- h. Record Drawings

**C. ADDITIONAL SERVICES**

Additional Services to be performed by FNI, if authorized by CLIENT, which are not included in the above described basic services, are described as follows:

1. Additional survey and geotechnical investigations
2. Hydraulic or hydrologic impact on San Gabriel River
3. FEMA floodplain coordination, including Letter of Map Revision

4. USACE Individual Permit
5. Permitting for dam removal
6. Bridge design
7. Additional construction phase services

#### **C. RESPONSIBILITIES OF COUNTY**

COUNTY shall perform the following in a timely manner so as not to delay the services of FNI:

1. Obtain Right-Of-Entry or perform public notifications as needed to conduct survey services, geotechnical investigation, and site visits.
2. Right-of-way and easement document preparation
3. Public Involvement Coordination
4. Onsite resident representation during construction
5. Quality control testing during construction

## EXHIBIT C

### WORK AUTHORIZATION

(To Be Completed and Executed After Contract Execution)

WORK AUTHORIZATION NO. \_\_\_\_\_

PROJECT: \_\_\_\_\_

This Work Authorization is made pursuant to the terms and conditions of the Williamson County Contract for Engineering Services, being dated \_\_\_\_\_, 20\_\_\_\_ and entered into by and between Williamson County, Texas, a political subdivision of the State of Texas, (the "County") and \_\_\_\_\_ (the "Engineer").

Part 1. The Engineer will provide the following Engineering Services set forth in Attachment "B" of this Work Authorization.

Part 2. The maximum amount payable for services under this Work Authorization without modification is \_\_\_\_\_.

Part 3. Payment to the Engineer for the services established under this Work Authorization shall be made in accordance with the Contract.

Part 4. This Work Authorization shall become effective on the date of final acceptance and full execution of the parties hereto and shall terminate on \_\_\_\_\_, 20\_\_\_\_. The Engineering Services set forth in Attachment "B" of this Work Authorization shall be fully completed on or before said date unless extended by a Supplemental Work Authorization.

Part 5. This Work Authorization does not waive the parties' responsibilities and obligations provided under the Contract.

Part 6. This Work Authorization is hereby accepted and acknowledged below.

EXECUTED this \_\_\_\_ day of \_\_\_\_\_, 20\_\_\_\_.

ENGINEER:

[Insert Company Name HERE]

By: \_\_\_\_\_  
Signature

\_\_\_\_\_  
Printed Name

\_\_\_\_\_  
Title

COUNTY:

Williamson County, Texas

By: \_\_\_\_\_  
Signature

\_\_\_\_\_  
Printed Name

\_\_\_\_\_  
Title

## LIST OF ATTACHMENTS

Attachment A - Services to be Provided by County

Attachment B - Services to be Provided by Engineer

Attachment C - Work Schedule

Attachment D - Fee Schedule

## **EXHIBIT D**

### **RATE SCHEDULE**

**Please see attached rate sheet, fee, and schedule.**

**CPI Rate Adjustments:** Rates will remain firm for the initial first year of the Contract and such rates shall be deemed the "Initial Base Rates". Engineer must request rate adjustments, in writing, at least thirty (30) days prior to each annual anniversary date of the Contract and any rate changes will take effect on the first day following the prior year. If Engineer fails to request a CPI rate adjustment, as set forth herein, the adjustment will be effective thirty (30) days after the County receives Engineer's written request. No retroactive rate adjustments will be allowed.

Price adjustments will be made in accordance with changes in the U.S. Department of Labor Consumer Price Index (CPI-U) for All Urban Consumers, All Items, South Region (Base 1982-84 = 100).

The rate adjustment will be determined by multiplying the Initial Base Rates by a fraction, the numerator of which is the index number for most recently released index before each annual anniversary date of the Contract and the denominator of which is the index number for the first month of the Contract (the index number for the month in which the Contract was originally executed). If the products are greater than the Initial Base Rates, County will pay the greater amounts as the rates during the successive year until the next rate adjustment. Rates for each successive year will never be less than the Initial Base Rates.

**COMPENSATION**

Compensation to FNI for Basic Services in Attachment SC shall be computed on the basis of the Schedule of Charges, but shall not exceed Three Hundred Six Thousand Seven Hundred Two Dollars and No Cents (\$306,702). If FNI sees the Scope of Services changing so that Additional Services are needed, including but not limited to those services described as Additional Services in Attachment SC, FNI will notify OWNER for OWNER's approval before proceeding. Additional Services shall be computed based on the Schedule of Charges.

**Schedule of Charges:**

<b><u>Position</u></b>	<b><u>Rate</u></b>
Professional - 1 (Env. Scientist I-III, Hydrologist I-III, GIS I-III)	113
Professional - 2 (Engineer I-III, Hydrologist IV, GIS IV)	137
Professional - 3 (Engineer IV, Env. Scientist IV, Hydrologist V, GIS V, Senior Geologist)	156
Professional - 4 (Engineer V, Env. Scientist V-VI)	178
Professional - 5 (Engineer VI, Env. Scientist VII, Hydrologist VI)	209
Professional - 6 (Engineer VII-VIII, Env. Scientist VIII)	240
Construction Manager - 1	91
Construction Manager - 2	117
Construction Manager - 3	138
Construction Manager - 4	173
CAD Technician/Designer - 1	96
CAD Technician/Designer - 2	126
CAD Technician/Designer - 3	153
Corporate Project Support - 1	92
Corporate Project Support - 2	111
Corporate Project Support - 3	148
Intern/ Coop	57

**Rates for In-House Services****Technology Charge**

\$8.50 per hour

**Travel**

Standard IRS Rates

**Bulk Printing and Reproduction**

	<b><u>B&amp;W</u></b>	<b><u>Color</u></b>
Small Format (per copy)	\$0.10	\$0.25
Large Format (per sq. ft.)		
Bond	\$0.25	\$0.75
Glossy / Mylar	\$0.75	\$1.25
Vinyl / Adhesive	\$1.50	\$2.00
Mounting (per sq. ft.)	\$2.00	
Binding (per binding)	\$0.25	

**OTHER DIRECT EXPENSES:**

Other direct expenses are reimbursed at actual cost. They include outside printing and reproduction expense, communication expense, travel, transportation and subsistence away from the FNI office and other miscellaneous expenses directly related to the work, including costs of laboratory analysis, test, and other work required to be done by independent persons other than staff members. For Resident Representative services performed by non-FNI employees and CAD services performed In-house by non-FNI employees where FNI provides workspace and equipment to perform such services, these services will be billed at cost.

These rates are subject to annual adjustment. Last Updated February 2015.

2022015

FNI VMV  
OWNER



Williamson County  
San Gabriel Ranch Road  
9-Mar-16  
Detailed Cost Breakdown

Project Fee Summary			
Basic	\$	306,702	
Special	\$		
Total Project	\$	306,702	

Basic Services														Total Hours	Total Labor Effort	Total Expense Effort	Total Sub Effort	Total Effort					
Bill Rate Classification		Professional 6	Professional 5	Professional 4	Professional 3	Professional 2	Corporate Project Support 3	Corporate Project Support 1	Construction Manager 4	CAD Technician/ Designer 2	CAD Technician/ Designer 1												
Hourly Bill Rate		\$240.00	\$209.00	\$178.00	\$156.00	\$137.00	\$148.00	\$92.00	\$173.00	\$126.00	\$96.00												
Study	1	Survey	2		2					4				8	\$ 1,340	\$ 68	\$ 10,384	\$ 11,792					
Study	2	Geotechnical Investigation													\$ -	\$ -	\$ 10,615	\$ 10,615					
		Project setup/kickoff and driller coordination	7				2	2						11	\$ 2,160	\$ 94	\$ -	\$ 2,254					
		Site Visit	10											10	\$ 2,400	\$ 285	\$ -	\$ 2,685					
		Field geology and boring logging, log production	1			30		3						34	\$ 5,196	\$ 972	\$ -	\$ 6,168					
		Geologic profiles and cross sections	1			3		3		3				13	\$ 1,773	\$ 111	\$ -	\$ 1,884					
		Slope stability and seepage analysis	1	3			12							16	\$ 2,511	\$ 138	\$ -	\$ 2,647					
														\$ -	\$ -	\$ -	\$ -						
Study	3	Preliminary H&H Analyses													\$ -	\$ -	\$ -	\$ -					
		Hydro Parameters			6	12	12							30	\$ 4,584	\$ 255	\$ -	\$ 4,839					
		Existing Conditions SSD			7	8	28							43	\$ 6,330	\$ 306	\$ -	\$ 6,696					
		2-100 yr Results	1		1	2	6							10	\$ 1,552	\$ 85	\$ -	\$ 1,637					
		75% PMF results				4	8							12	\$ 1,720	\$ 102	\$ -	\$ 1,822					
														\$ -	\$ -	\$ -	\$ -						
Study	4	Develop Alternative Repair Concepts													\$ -	\$ -	\$ -	\$ -					
		Remove Embankment and Add Bridge	12	2	8	2	4			4				32	\$ 6,086	\$ 272	\$ -	\$ 6,358					
		Leave Hydraulics Unchanged, Replace Culverts	14	2	8	2	4			8				36	\$ 7,070	\$ 356	\$ -	\$ 7,426					
		Upgrade Emergency Spillway	14	2	8	2	4			8				38	\$ 7,070	\$ 323	\$ -	\$ 7,393					
														\$ -	\$ -	\$ -	\$ -						
Study	5	Alternative Repair Evaluation													\$ -	\$ -	\$ -	\$ -					
		2 to 100-year, 75% PMF Results	2		9	14	16							43	\$ 6,732	\$ 368	\$ -	\$ 7,098					
		Develop Probable Costs	2	2	4	2	8		6					24	\$ 4,056	\$ 204	\$ -	\$ 4,260					
		Evaluate permit requirements			20									20	\$ 3,560	\$ 170	\$ -	\$ 3,730					
														\$ -	\$ -	\$ -	\$ -						
Study	6	Documentation and Meetings													\$ -	\$ -	\$ -	\$ -					
		Geotechnical Technical Memorandum	6	3		3	12			8				30	\$ 4,935	\$ 255	\$ -	\$ 5,190					
		H&H Technical Memorandum	4		13	20	22							59	\$ 9,408	\$ 502	\$ -	\$ 9,910					
		Summary Report	8	1	8	4	8			8				37	\$ 6,281	\$ 315	\$ -	\$ 6,596					
		Develop Figures, 2 sheets per alternative	2		4	4				8				18	\$ 2,824	\$ 153	\$ -	\$ 2,977					
		Attend two meetings with County	10	4	7	2	9							32	\$ 6,027	\$ 337	\$ -	\$ 6,364					
		Attend one public meeting	16		10	2	4	2						34	\$ 6,664	\$ 487	\$ -	\$ 7,151					
									2					\$ -	\$ -	\$ -	\$ -						
Design	1	Environmental Permitting													\$ -	\$ -	\$ -	\$ -					
		Develop permitting strategy	2		22	8								32	\$ 5,644	\$ 272	\$ -	\$ 5,916					
		Site Visit			12									12	\$ 2,136	\$ 135	\$ -	\$ 2,271					
		THC Coordination	2		22									24	\$ 4,396	\$ 204	\$ -	\$ 4,600					
		Develop PCN	2		88	20								110	\$ 19,264	\$ 935	\$ -	\$ 20,199					
														\$ -	\$ -	\$ -	\$ -						
Design	2	Conceptual Sketches													\$ -	\$ -	\$ -	\$ -					
		Sketches	13	3	10	15	17			15	16			89	\$ 13,622	\$ 757	\$ -	\$ 14,379					
		Table of Contents - Technical Specifications	12	1	12	2	8							35	\$ 6,633	\$ 258	\$ -	\$ 6,931					
														\$ -	\$ -	\$ -	\$ -						
Design	3	90% Plans and Specifications													\$ -	\$ -	\$ -	\$ -					
		Plans	26	1	20	19	53			65	6			191	\$ 28,952	\$ 1,815	\$ -	\$ 30,767					
		Specifications	24		24	1	32							81	\$ 14,572	\$ 889	\$ -	\$ 15,261					
		OPCC	8		16	2	14		7					47	\$ 8,209	\$ 400	\$ -	\$ 8,609					
														\$ -	\$ -	\$ -	\$ -						
	4	Final Plans and Specifications	12		16		18			20				64	\$ 10,440	\$ 738	\$ -	\$ 11,178					
														\$ -	\$ -	\$ -	\$ -						
Bid	1	Bid Phase		1		2								5	\$ 713	\$ 43	\$ -	\$ 756					
Bid	2	Pre-Bid Meeting	20		4		2				2			26	\$ 5,786	\$ 254	\$ -	\$ 6,040					
Bid	2	Addenda	10		8		10			6				34	\$ 5,950	\$ 280	\$ -	\$ 6,239					
Bid	3	Bid Opening	6		4									10	\$ 2,152	\$ 118	\$ -	\$ 2,270					
Bid	4	Bid Evaluation	9		4									10	\$ 2,152	\$ 65	\$ -	\$ 2,237					
														\$ -	\$ -	\$ -	\$ -						
		Construction (General Oversight)													\$ -	\$ -	\$ -	\$ -					
Const	1	Issued For Construction Documents	2		4		4	2	2					18	\$ 2,792	\$ 390	\$ -	\$ 3,182					
	2	Pre-Construction Conference	4		4		2			6				10	\$ 1,946	\$ 65	\$ -	\$ 2,031					
	3	Site Visits	6	4	28	4	8							50	\$ 8,980	\$ 555	\$ -	\$ 9,535					
	4	Progress Meetings	20											20	\$ 4,800	\$ 300	\$ -	\$ 5,100					
	5	Submittal Review	10	2	12	2	2							28	\$ 5,540	\$ 238	\$ -	\$ 5,778					
	6	Document Interpretation and Eng. Support	5	2	9	2	8			8				36	\$ 5,176	\$ 306	\$ -	\$ 5,484					
	7	Monthly Progress Reports	4		16									20	\$ 3,808	\$ 170	\$ -	\$ 3,978					
	8	Substantial Completion Review	8				2							10	\$ 2,184	\$ 65	\$ -	\$ 2,270					
	9	Record Drawings	2		4		6			8				20	\$ 3,022	\$ 170	\$ -	\$ 3,192					
														\$ -	\$ -	\$ -	\$ -						
Total Basic Services Hours		319	33	453	193	346	4	16	13	177	26												
Total Basic Services Labor Effort		\$ 76,560	\$ 6,897	\$ 80,634	\$ 30,108	\$ 47,402	\$ 592	\$ 920	\$ 2,249	\$ 22,302	\$ 2,496	\$ -	\$ -	1,574	\$ 270,160	\$ 15,543	\$ 20,999	\$ 306,702					



**Williamson County**  
**San Gabriel Ranch Road**  
**9-Mar-16**  
**Detailed Cost Breakdown**

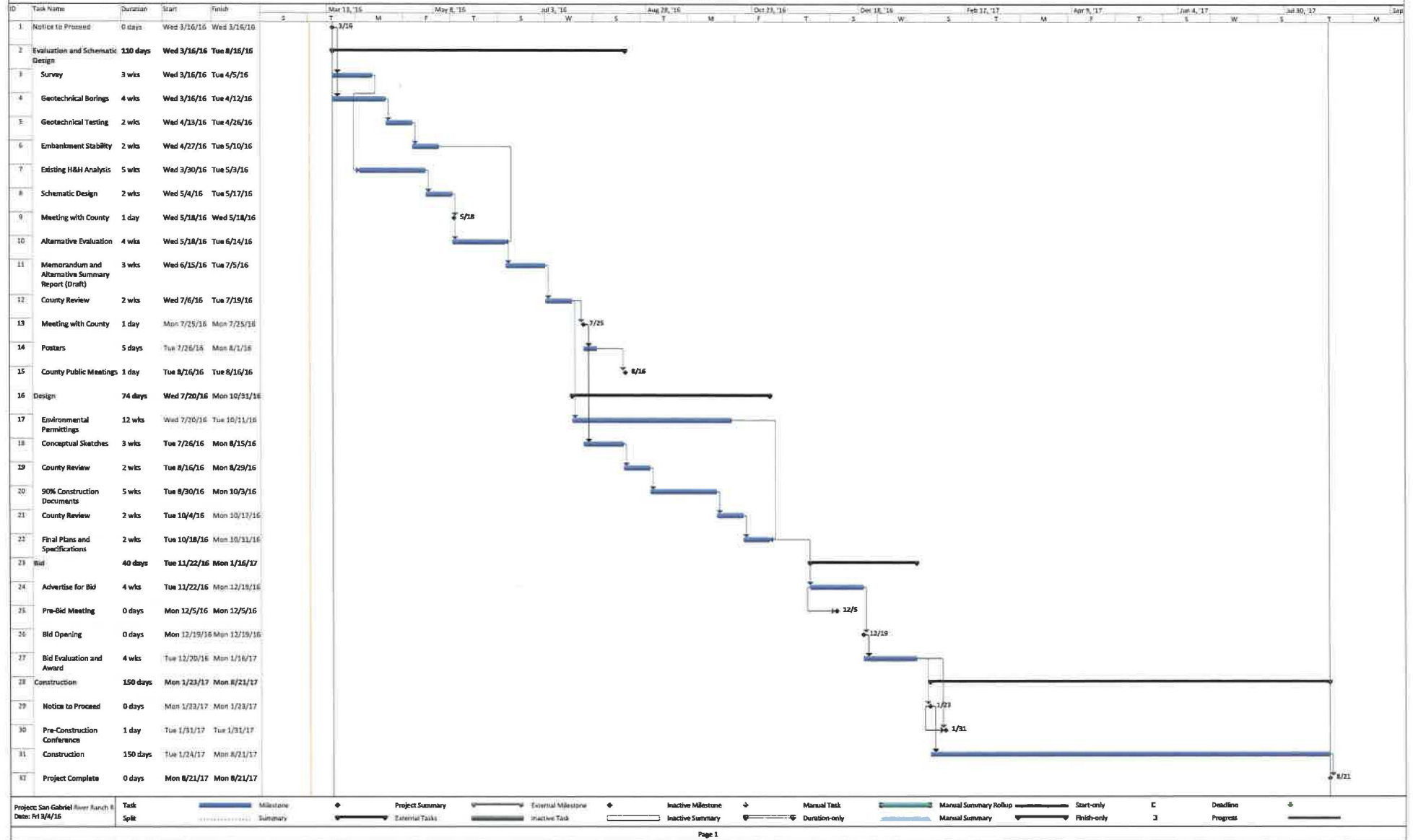
Project Fee Summary		
Basic	\$	306,702
Special	\$	-
Total Project	\$	306,702

Phase	Task	Expenses	Tech Charge	Miles	B&W (sheet)	Color (sheet)	Binding (each)	Lg Format - Bond - B&W (sq. ft.)	Lg Format - Glossy/Mylar - B&W (sq. ft.)	Lg Format - Vinyl/Adhesive - B&W (sq. ft.)	Lg Format - Bond - Color (sq. ft.)	Lg Format - Glossy/Mylar - Color (sq. ft.)	Lg Format - Vinyl/Adhesive - Color (sq. ft.)	Other	Total Exp Effort
Study	1	Survey	8												\$ 68
Study	2	Geotechnical Investigation													\$ -
		Project setup/ kickoff and driller coordination	11												\$ 94
		Site Visit	10	370											\$ 265
		Field geology and boring logging, log production	34	450										400	\$ 972
		Geologic profile and cross sections	13												\$ 111
		Slope stability and seepage analyses	16												\$ 136
															\$ -
Study	3	Preliminary H&M Analyses													\$ -
		Hydro Parameters	30												\$ 265
		Existing Conditions SSD	43												\$ 366
		2-100 yr Results	10												\$ 85
		75% PMF results	12												\$ 102
															\$ -
Study	4	Develop Alternative Repair Concepts													\$ -
		Remove Embankment and Add Bridge	32												\$ 272
		Leave Hydraulics Unchanged, Replace Culverts	36	60											\$ 356
		Upgrade Emergency Spillway	36												\$ 323
															\$ -
Study	5	Alternative Repair Evaluation													\$ -
		2 to 100-year, 75% PMF Results	43												\$ 366
		Develop Probable Costs	24												\$ 204
		Evaluate permit requirements	20												\$ 170
															\$ -
Study	6	Documentation and Meetings													\$ -
		Geotechnical Technical Memorandum	30												\$ 265
		H&M Technical Memorandum	59												\$ 502
		Summary Report	37												\$ 315
		Develop Figures: 2 sheets per alternative	18												\$ 153
		Attend two meetings with County	32	120											\$ 337
		Attend one public meeting	34	60										150	\$ 487
															\$ -
Design	1	Environmental Permitting													\$ -
		Develop permitting strategy	32												\$ 272
		Site Visit	12	60											\$ 136
		THC Coordination	24												\$ 304
		Develop PCN	110												\$ 935
															\$ -
Design	2	Conceptual Sketches													\$ -
		Sketches	89												\$ 757
		Table of Contents - Technical Specifications	35												\$ 298
															\$ -
Design	3	90% Plans and Specifications													\$ -
		Plans	191		500	500	5	60							\$ 1,615
		Specifications	61												\$ 689
		OFGC	47												\$ 400
															\$ -
	4	Final Plans and Specifications	64		900	500	5	80							\$ 736
															\$ -
		Bid Phase	5												\$ 43
Bid	1	Pre-Bid Meeting	26	60											\$ 254
Bid	2	Addenda	34												\$ 289
Bid	3	Bid Opening	10	60											\$ 118
Bid	4	Bid Evaluation	10												\$ 85
															\$ -
		Construction (General Oversight)													\$ -
Const	1	Issued For Construction Documents	18		500	500	5	60	60						\$ 390
	2	Pre-Construction Conference	10												\$ 85
	3	Site Visits	50	240											\$ 555
	4	Progress Meetings	20	240											\$ 300
	5	Submittal Review	28												\$ 238
	6	Document Interpretation and Eng. Support	36												\$ 306
	7	Monthly Progress Reports	20												\$ 170
	8	Substantial Completion Review	10												\$ 85
	9	Record Drawings	20												\$ 170
															\$ -
															\$ -
															\$ -
Total Basic Services Items			1,574	1,720	1,500	1,500	15	180	60	-	-	-	-	-	550
Total Basic Services Expenses Effort			\$ 13,379	\$ 929	\$ 150	\$ 375	\$ 4	\$ 45	\$ 45	\$ -	\$ -	\$ -	\$ -	\$ -	\$ 605
															\$ 15,543

Project Fee Summary	
Basic	\$ 306.70
Special	\$ -
Total Project	\$ 306.70

3 of 3

# San Gabriel Ranch Road Freese and Nichols





## **EXHIBIT E**

### **Williamson County Vendor Reimbursement Policy**

The purpose of this Williamson County Vendor Reimbursement Policy Vendor Reimbursement Policy ("Policy") is to provide clear guidelines to vendors on Williamson County's expectations and requirements regarding allowable reimbursable expenditures and required backup. The Policy will also minimize conflicts related to invoice payments and define non-reimbursable items. This Policy is considered a guideline and is not a contract.

This Policy may be altered, deleted or amended, at any time and without prior notice to vendors, by action of the Williamson County Commissioners Court. Unenforceable provisions of this Policy, as imposed by applicable law, regulations, or judicial decisions, shall be deemed to be deleted. Any revisions to this Policy will be distributed to all current vendors doing business with the County.

#### **1. Invoices and Affidavits**

- 1.1 Invoices must adequately describe the goods or services provided to County and include all required backup (i.e. reimbursable expenses, mileage log, timesheets, receipts detailing expenses incurred etc.) that is in a form acceptable to the Williamson County Auditor. Invoices that do not adequately describe the goods or services provided to County or contain backup that is satisfactory to the Williamson County Auditor will be returned to vendor for revisions and the provision above relating to invoice errors resolved in favor of the County shall control as to the required actions of vendor and when such invoice must be paid by the County.
- 1.2 In the event an invoice includes charges based upon hourly billing rates for services or any other rates based upon the amount of time worked by an individual or individuals in performing services, whether the charges are being billed directly to the County or whether they are the basis of invoices from subcontractors for which the vendor seeks reimbursement from the County, the charges shall be accompanied by an affidavit signed by an officer or principal of the vendor certifying that the work was performed, it was authorized by the County and that all information contained in the invoice that is being submitted is true and correct.
- 1.3 Upon County's request, vendor must submit all bills paid affidavits wherein vendor must swear and affirm that vendor has paid each of its subcontractors, laborers, suppliers and material in full for all labor and materials provided to vendor for or in connection with services and work performed for County and, further, vendor must swear and affirm that vendor is not aware of any unpaid bills, claims, demands, or causes of action by any of its subcontractors, laborers, suppliers, or material for or in connection with the furnishing of labor or materials, or both, for services and work performed for County.

#### **2. Travel Reimbursement**

- 2.1 The County will only cover costs associated with travel on vendors outside a 50 mile radius from Williamson County, Texas.
- 2.2 The County will only cover costs associated with travel as documented work for County. If a vendor is also doing business for another client, the travel costs must be split in proportion to the amount of work actually performed for County and the other client. The only allowable travel expense will be for the specific days worked for Williamson County.
- 2.3 No advance payments will be made to vendor for travel expenditures. The travel expenditure may only be reimbursed after the expenditure/trip has already occurred and vendor has provided the Williamson County Auditor with all necessary and required backup.
- 2.4 Vendors must submit all travel reimbursement requests on each employee in full. Specifically, a travel reimbursement request must include all related travel reimbursement expenses relating to a particular trip for which vendor seeks reimbursement. Partial travel reimbursement requests will not be accepted (i.e. vendor should not submit hotel and mileage one month then the next month submit rental car and airfare). If the travel reimbursement appears incomplete, the invoice will be sent back to the vendor to be submitted when all information is ready to submit in full.
- 2.5 Reimbursement for transportation costs will be at the most reasonable means of transportation (i.e.: airline costs will be reimbursed for coach rate, rental car costs will only be reimbursed if rental car travel was most reasonable means of travel as compared to travel by air).
- 2.6 The County will not be responsible for, nor will the County reimburse additional charges due to personal preference or personal convenience of individual traveling.
- 2.7 The County will not reimburse airfare costs if airfare costs were higher than costs of mileage reimbursement.
- 2.8 Additional expenses associated with travel that is extended to save costs (i.e. Saturday night stay) may be reimbursed if costs of airfare would be less than the cost of additional expenses (lodging, meals, car rental, mileage) if the trip had not been extended. Documentation satisfactory to the Williamson County Auditor will be required to justify expenditure.
- 2.9 County will only reimburse travel expense to necessary personnel of the vendor (i.e. no spouse, friends or family members).
- 2.10 Except as otherwise set forth herein, a vendor must provide a paid receipt for all expenses. If a receipt cannot be obtained, a written sworn statement of the expense from the vendor may be substituted for the receipt.
- 2.11 Sales tax for meals and hotel stays are the only sales taxes that will be reimbursed. Sales tax on goods purchased will not be reimbursed. A sales tax exemption form is available from the Williamson County Auditor's Office upon request.
- 2.12 The County will not pay for any late charges on reimbursable items. It is the responsibility of the vendor to pay the invoice first and seek reimbursement from the County.

### **3. Meals**

- 3.1 Meal reimbursements are limited to a maximum of \$40.00 per day on overnight travel. On day travel (travel that does not require an overnight stay), meal reimbursements are limited to a maximum of \$20.00 per day. The travel must be outside the Williamson County, Texas line by a 50 mile radius.
- 3.2 Receipts are required on meal reimbursement amounts up to the maximum per day amount stated for overnight or day travel. If receipts are not presented, the vendor can request per diem (per diem limits refer to 3.2). However, a vendor cannot combine per diem and meal receipts. Only one method shall be allowed.
- 3.3 Meals are reimbursable only for vendors who do not have the necessary personnel located within a 50 mile radius of Williamson County, Texas that are capable of carrying the vendor's obligations to County. Meals will not be reimbursed to vendors who are located within a 50 mile radius of Williamson County, Texas.
- 3.4 County will not reimburse for alcoholic beverages.
- 3.5 Tips are reimbursable but must be reasonable to limitation of meal allowance.
- 3.6 No meals purchased for entertainment purposes will be allowed.
- 3.7 Meal reimbursement must be substantiated with a hotel receipt.

#### **4. Lodging**

- 4.1 Hotel accommodations require an itemized hotel folio as a receipt. The lodging receipt should include name of the motel/hotel, number of occupant(s), goods or services for each individual charge (room rental, food, tax, etc.) and the name of the occupant(s). Credit card receipts or any other form of receipt are not acceptable.
- 4.2 Vendors will be reimbursed for a single room rate charge plus any applicable tax. If a single room is not available, the vendor must provide documentation to prove that a single room was not available in order to justify the expense over and above the single room rate. A vendor may also be required to provide additional documentation if a particular room rate appears to be excessive.
- 4.3 Personal telephone charges, whether local or long distance, will not be reimbursed.

#### **5. Airfare**

- 5.1 The County will only reimburse up to a coach price fare for air travel.
- 5.2 The County will exclude any additional charges due to personal preference or personal convenience of the individual traveling (i.e. early bird check in, seat preference charges, airline upgrades, etc. will not be an allowable reimbursement)
- 5.3 Air travel expenses must be supported with receipt copy of an airline ticket or an itinerary with actual ticket price paid. If tickets are purchased through a website, vendor must submit a copy of the webpage showing the ticket price if no paper ticket was issued.
- 5.4 Cancellation and/or change flight fees may be reimbursed by the County but vendor must provide the Williamson County Auditor with documentation in writing from a County department head providing authorization for the change.
- 5.5 The County will not reimburse vendor for tickets purchased with frequent flyer miles.

## **6. Car Rental**

- 6.1 Vendors that must travel may rent a car at their destination when it is less expensive than other transportation such as taxis, airport shuttles or public transportation such as buses or subways.
- 6.2 Cars rented must be economy or mid-size. Luxury vehicle rentals will not be reimbursed. Any rental costs over and above the cost of a mid-size rental will be adjusted.
- 6.3 Vendors will be reimbursed for rental cars if the rental car cost would have been less than the mileage reimbursement cost (based on the distance from vendor's point of origin to Williamson County, Texas) had the vendor driven vendor's car.
- 6.4 Vendors must return a car rental with appropriate fuel levels as required by rental agreement to avoid the car rental company from adding fuel charges.
- 6.5 Rental agreement and credit card receipt must be provided to County as back up for the request for reimbursement.
- 6.6 Insurance purchased when renting vehicle may also be reimbursed.
- 6.7 Car Rental optional extras such as GPS, roadside assistance, and administrative fees on Tolls will not be reimbursed.

## **7. Personal Car Usage**

- 7.1 Personal vehicle usage will be reimbursed in an amount equal to the standard mileage rate allowed by the IRS.
- 7.2 Per code of Federal Regulations, Title 26, Subtitle A, Chapter 1, Subchapter B, Part IX, Section 274(d), all expense reimbursement requests must include the following:
  - 7.2.1.1 Date
  - 7.2.1.2 Destination
  - 7.2.1.3 Purpose
  - 7.2.1.4 Name of traveler(s)
  - 7.2.1.5 Correspondence that verifies business purpose of the expense
- 7.3 The mileage for a personal vehicle must document the date, location of travel to/from, number of miles traveled and purpose of trip.
- 7.4 Mileage will be reimbursed on the basis of the most commonly used route.
- 7.5 Reimbursement for mileage shall not exceed the cost of a round trip coach airfare.
- 7.6 Reimbursement for mileage shall be prohibited between place of residence and usual place of work.
- 7.7 Mileage should be calculated from vendor's employee's regular place of work or their residence, whichever is the shorter distance when traveling to a meeting or traveling to Williamson County, Texas for vendors who are located outside of Williamson County, Texas by at least a 50 mile radius.
- 7.8 When more than one person travels in same vehicle, only one person may claim mileage reimbursement.
- 7.9 Tolls, if reasonable, are reimbursable. Receipts are required for reimbursement. If a receipt is not obtainable, then written documentation of expense must be submitted for reimbursement (administrative fees on Tolls will not be reimbursed).
- 7.10 Parking fees, if reasonable, are reimbursable for meetings and hotel stays. For vendors who contract with a third party for visitor parking at vendor's place of business, Williamson County will not reimburse a vendor based on a percentage of



its contracted visitor parking fees. Rather, Williamson County will reimburse Vendor for visitor parking on an individual basis for each time a visitor uses Vendor's visitor parking. Receipts are required for reimbursement. If a receipt is not obtainable, then written documentation of expense must be submitted for reimbursement.

- 7.11 Operating and maintenance expenses, as well as other personal expenses, such as parking tickets, traffic violations, and car repairs and collision damage are not reimbursable.

## **8. Other Expenses**

- 8.1 Taxi fare, bus tickets, conference registrations, parking, etc. must have a proper original receipt.

## **9. Repayment of Nonreimbursable Expense.**

Vendors must, upon demand, immediately repay County for all inappropriately reimbursed expenses whenever an audit or subsequent review of any expense reimbursement documentation finds that such expense was reimbursed contrary to these guidelines and this Policy. Williamson County reserves the right to retain any amounts that are due or that become due to a vendor in order to collect any inappropriately reimbursed expenses that a vendor was paid.

## **10. Non-Reimbursable Expenses**

In addition to the non-reimbursable items set forth above in this Policy, the following is a non-exhaustive list of expenses that will not be reimbursed by Williamson County:

- 10.1 Alcoholic beverages/tobacco products
- 10.2 Personal phone calls
- 10.3 Laundry service
- 10.4 Valet service
- 10.5 Movie rentals
- 10.6 Damage to personal clothing
- 10.7 Flowers/plants
- 10.8 Greeting cards
- 10.9 Fines and/or penalties
- 10.10 Entertainment, personal clothing, personal sundries and services
- 10.11 Transportation/mileage to places of entertainment or similar personal activities
- 10.12 Upgrades to air, hotel and/or car rental
- 10.13 Auto repairs
- 10.14 Baby sitter fees, kennel costs, pet or house-sitting fees
- 10.15 Saunas, massages or exercise facilities
- 10.16 Credit card delinquency fees
- 10.17 Doctor bills, prescription and other medical services
- 10.18 Hand tools
- 10.19 Safety Equipment (hard hats, safety vests, etc.)
- 10.20 Office supplies

10.21 Any other expenses which Williamson County deems, in its sole discretion, to be inappropriate or unnecessary expenditures.

**EXHIBIT F**

**CERTIFICATES OF INSURANCE**

**ATTACHED BEHIND THIS PAGE**