



## Change Order No.1

Date Submitted: June 15, 2017  
Submitted to: Williamson County Texas  
C/O Brody Harris, AIA  
BGLY Architects

**RE: Work changes for project Williamson County – Justice Center CSCD Build-Out (See attached sub proposal back up for scope of each line item)**

S&G Contracting, Inc. respectfully submits this credit change in the amount of **\$2,657.11 (Two thousand six hundred fifty seven dollars and 11/100)**

Description/Breakdown is as follows:

1. Price change from M&C Electric as per specifications & directions as per ASI 1: \$ 1,714.00
2. Price change from TMC Enterprises as per specifications & directions as per ASI 1: \$418.00
3. Direct cost for requested changes(i.e.: fuel, material, labor, supplies & extra haul off): \$213.20
4. Subtotal: \$2,345.20
5. S&G OH&P: \$234.52
6. Bond & Ins.: \$77.39
7. Total Changes: \$2,657.11

If you have any questions, please do not hesitate to call us. We can be reached at 512.331.8799 or 512.331.4228,  
Or [shane@sginc.biz](mailto:shane@sginc.biz)



Jimmy S. Gibson  
S&G Contracting Inc.



**M & C Electric Inc.**

9701 Brown Lane C #305  
Austin, TX 78754  
Eric Cain 512-293-5144  
Ricky Masters 512-468-4662  
Fax 512-926-8022  
TECL# 24004  
5/30/17

**Williamson County Justice Center CSCD**

ASI#01

General Contractor- S & G Contracting

Relocate switches and receptacles to new locations. Add 2 M1 fixtures per updated drawings dated 5/26/17

Material	\$632.57
Labor	\$1,082.00
Total	\$1,714.58

<b>Total CO</b>	<b>\$1,714.00</b>
-----------------	-------------------

# Change Order 1

**ATTN:** Gary Diehl  
**BUILDER:** S&G Contracting  
**PROJECT:** Williamson County Justice Center  
**SUBJECT:** ASI 01

This change order includes all labor, materials, and equipment to complete the project under the following conditions:

**Change Order Total: \$ 418**

We will provide material and labor to do the following work at the above-referenced job:

**SCOPE & Qualifications:**

**Inclusions:**

- \* Demo wall framing and drywall on one side of wall between Room 117 and deleted Room 118.
- \* Add new wall Type D between hallway and extended Room 117.

TCM Enterprises - Texas

By signing below, builder accepts this Change Order.

*Brian Kiddy*

5/31/17

By: Brian Kiddy  
[brian@tcmenterprises.net](mailto:brian@tcmenterprises.net)

Date

By:

Date



2204 Forbes Drive  
Suite 101  
Austin, TX 78754  
512.977.0390 t  
512.977.0838 f  
[www.blgy.com](http://www.blgy.com)

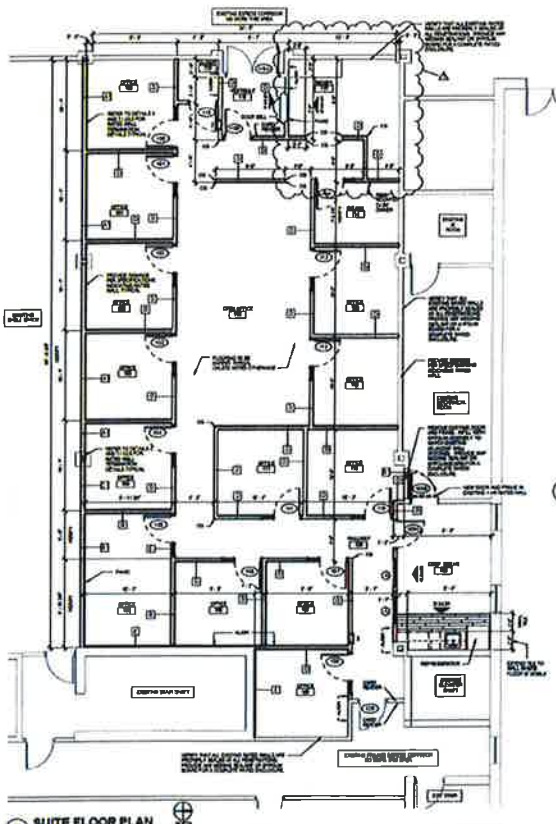
**Williamson County – Justice Center CSCD Build-Out**

ASI #01– 5/26/17

Layout changes requested by Owner.

See attached revised sheets:

A2.01, E1.01, E2.01 and Technology SKT-1



1 SUITE FLOOR PLAN  
1/4" = 1'-0"

**ROOM FINISH SCHEDULE**

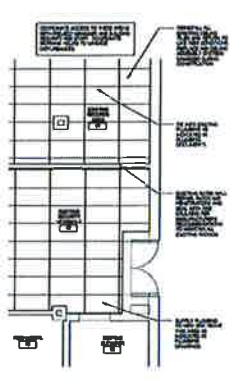
NO.	ROOM	FLOOR	WALLS	CEILING	FLOORING	DOORS	WINDOWS	REMARKS
101	OFFICE	1ST	1	2	3	4	5	
102	OFFICE	1ST	1	2	3	4	5	
103	OFFICE	1ST	1	2	3	4	5	
104	OFFICE	1ST	1	2	3	4	5	
105	OFFICE	1ST	1	2	3	4	5	
106	OFFICE	1ST	1	2	3	4	5	
107	OFFICE	1ST	1	2	3	4	5	
108	OFFICE	1ST	1	2	3	4	5	
109	OFFICE	1ST	1	2	3	4	5	
110	OFFICE	1ST	1	2	3	4	5	
111	OFFICE	1ST	1	2	3	4	5	
112	OFFICE	1ST	1	2	3	4	5	
113	OFFICE	1ST	1	2	3	4	5	
114	OFFICE	1ST	1	2	3	4	5	
115	OFFICE	1ST	1	2	3	4	5	
116	OFFICE	1ST	1	2	3	4	5	
117	OFFICE	1ST	1	2	3	4	5	
118	OFFICE	1ST	1	2	3	4	5	
119	OFFICE	1ST	1	2	3	4	5	
120	OFFICE	1ST	1	2	3	4	5	
121	OFFICE	1ST	1	2	3	4	5	
122	OFFICE	1ST	1	2	3	4	5	
123	OFFICE	1ST	1	2	3	4	5	
124	OFFICE	1ST	1	2	3	4	5	
125	OFFICE	1ST	1	2	3	4	5	
126	OFFICE	1ST	1	2	3	4	5	
127	OFFICE	1ST	1	2	3	4	5	
128	OFFICE	1ST	1	2	3	4	5	
129	OFFICE	1ST	1	2	3	4	5	
130	OFFICE	1ST	1	2	3	4	5	
131	OFFICE	1ST	1	2	3	4	5	
132	OFFICE	1ST	1	2	3	4	5	
133	OFFICE	1ST	1	2	3	4	5	
134	OFFICE	1ST	1	2	3	4	5	
135	OFFICE	1ST	1	2	3	4	5	
136	OFFICE	1ST	1	2	3	4	5	
137	OFFICE	1ST	1	2	3	4	5	
138	OFFICE	1ST	1	2	3	4	5	
139	OFFICE	1ST	1	2	3	4	5	
140	OFFICE	1ST	1	2	3	4	5	
141	OFFICE	1ST	1	2	3	4	5	
142	OFFICE	1ST	1	2	3	4	5	
143	OFFICE	1ST	1	2	3	4	5	
144	OFFICE	1ST	1	2	3	4	5	
145	OFFICE	1ST	1	2	3	4	5	
146	OFFICE	1ST	1	2	3	4	5	
147	OFFICE	1ST	1	2	3	4	5	
148	OFFICE	1ST	1	2	3	4	5	
149	OFFICE	1ST	1	2	3	4	5	
150	OFFICE	1ST	1	2	3	4	5	
151	OFFICE	1ST	1	2	3	4	5	
152	OFFICE	1ST	1	2	3	4	5	
153	OFFICE	1ST	1	2	3	4	5	
154	OFFICE	1ST	1	2	3	4	5	
155	OFFICE	1ST	1	2	3	4	5	
156	OFFICE	1ST	1	2	3	4	5	
157	OFFICE	1ST	1	2	3	4	5	
158	OFFICE	1ST	1	2	3	4	5	
159	OFFICE	1ST	1	2	3	4	5	
160	OFFICE	1ST	1	2	3	4	5	
161	OFFICE	1ST	1	2	3	4	5	
162	OFFICE	1ST	1	2	3	4	5	
163	OFFICE	1ST	1	2	3	4	5	
164	OFFICE	1ST	1	2	3	4	5	
165	OFFICE	1ST	1	2	3	4	5	
166	OFFICE	1ST	1	2	3	4	5	
167	OFFICE	1ST	1	2	3	4	5	
168	OFFICE	1ST	1	2	3	4	5	
169	OFFICE	1ST	1	2	3	4	5	
170	OFFICE	1ST	1	2	3	4	5	
171	OFFICE	1ST	1	2	3	4	5	
172	OFFICE	1ST	1	2	3	4	5	
173	OFFICE	1ST	1	2	3	4	5	
174	OFFICE	1ST	1	2	3	4	5	
175	OFFICE	1ST	1	2	3	4	5	
176	OFFICE	1ST	1	2	3	4	5	
177	OFFICE	1ST	1	2	3	4	5	
178	OFFICE	1ST	1	2	3	4	5	
179	OFFICE	1ST	1	2	3	4	5	
180	OFFICE	1ST	1	2	3	4	5	
181	OFFICE	1ST	1	2	3	4	5	
182	OFFICE	1ST	1	2	3	4	5	
183	OFFICE	1ST	1	2	3	4	5	
184	OFFICE	1ST	1	2	3	4	5	
185	OFFICE	1ST	1	2	3	4	5	
186	OFFICE	1ST	1	2	3	4	5	
187	OFFICE	1ST	1	2	3	4	5	
188	OFFICE	1ST	1	2	3	4	5	
189	OFFICE	1ST	1	2	3	4	5	
190	OFFICE	1ST	1	2	3	4	5	
191	OFFICE	1ST	1	2	3	4	5	
192	OFFICE	1ST	1	2	3	4	5	
193	OFFICE	1ST	1	2	3	4	5	
194	OFFICE	1ST	1	2	3	4	5	
195	OFFICE	1ST	1	2	3	4	5	
196	OFFICE	1ST	1	2	3	4	5	
197	OFFICE	1ST	1	2	3	4	5	
198	OFFICE	1ST	1	2	3	4	5	
199	OFFICE	1ST	1	2	3	4	5	
200	OFFICE	1ST	1	2	3	4	5	

**NOTES:**

1. FINISHES TO BE SHOWN ON THIS SCHEDULE.
2. FINISHES TO BE SHOWN ON THIS SCHEDULE.
3. FINISHES TO BE SHOWN ON THIS SCHEDULE.
4. FINISHES TO BE SHOWN ON THIS SCHEDULE.
5. FINISHES TO BE SHOWN ON THIS SCHEDULE.

**REVISIONS:**

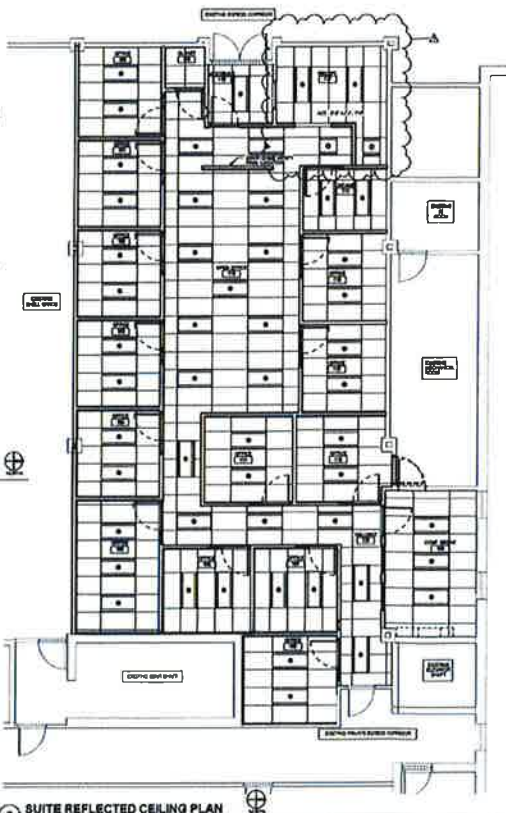
NO. DATE BY



3 PARTIAL BASEMENT CEILING PLAN  
1/4" = 1'-0"

**GENERAL NOTES:**

1. FINISHES TO BE SHOWN ON THIS SCHEDULE.
2. FINISHES TO BE SHOWN ON THIS SCHEDULE.
3. FINISHES TO BE SHOWN ON THIS SCHEDULE.
4. FINISHES TO BE SHOWN ON THIS SCHEDULE.
5. FINISHES TO BE SHOWN ON THIS SCHEDULE.



2 SUITE REFLECTED CEILING PLAN  
1/4" = 1'-0"

**NOTES:**

1. FINISHES TO BE SHOWN ON THIS SCHEDULE.
2. FINISHES TO BE SHOWN ON THIS SCHEDULE.
3. FINISHES TO BE SHOWN ON THIS SCHEDULE.
4. FINISHES TO BE SHOWN ON THIS SCHEDULE.
5. FINISHES TO BE SHOWN ON THIS SCHEDULE.



**PROJECT:**  
JUSTICE CENTER - CSCD  
WILLIAMSON COUNTY  
405 MARTIN LUTHER KING ST., GEORGETOWN, TX 78626

**DESIGNER:**  
CSCD  
1100 NORTH  
WILSON BLVD., SUITE 100  
DALLAS, TX 75201  
972-351-1000

**DATE:** 11/11/2011  
**TIME:** 10:11 AM  
**SCALE:** AS SHOWN  
**PROJECT:** JUSTICE CENTER - CSCD  
**DATE PLOTTED:** 11/11/2011  
**TIME PLOTTED:** 10:11 AM  
**PLotted by:** [Name]





---

## ASI #1

---

**Date:** 5/25/2017

**Project:** Justice Center Remodel, Williamson County

**From:** Steve Bridges, TNCG

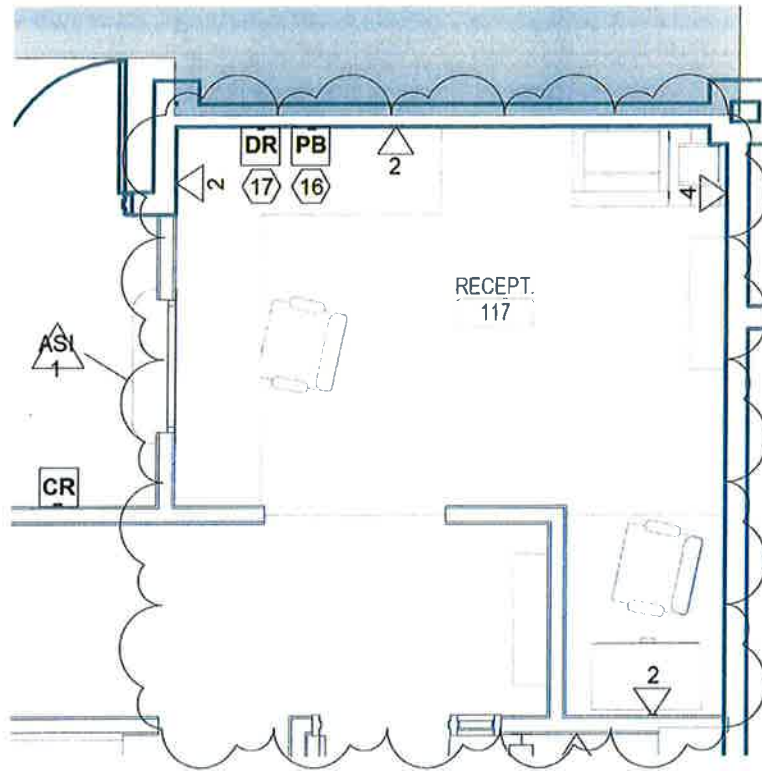
**To:** BLGY, Brody Harris

**Attachments (1):**

---

The following narrative items describe changes as well as clarifications with regards to the technology requirements for the Justice Center Remodel, Williamson County.

1. Refer to the attached sketch ASI – 1 – Wall moves and Technology locations.
2. D1 location is to be Owner Furnished/Owner installed, contractor shall coordinate with owner on the mounting height for their selected display size and set a 4" Square Back-Box with Single Gang Mud-Ring for rough in. Sheet T502 Detail 2 is not applicable to this project.



**1** TECHNOLOGY - LEVEL ONE - ASI 1  
SCALE: 1/4" = 1'-0"

**trueNORTH**  
consulting group  
3408 HILLCREST DRIVE  
WACO, TX 76708  
ph.512.451.5445 fax.512.451.8777  
www.tncg.com

JUSTICE CENTER REMODEL  
WILLIAMSON COUNTY

**ASI 1**

Project number	0000
Date	05/25/2017
Drawn by	RT
Checked by	SB

**SKT - 1**

Scale 1/4" = 1'-0"