

PROPOSAL REQUEST

BRINKLEY SARGENT WIGINTON ARCHITECTS

Distribution: OWNER ARCHITECT CONSULTANT CONTRACTOR FIELD OTHER

PROJECT: Williamson County Sheriff's Office Training Center
8160 Chandler Road
Hutto, TX 78634

PROPOSAL REQUEST NO: 09

OWNER: Williamson County
3151 SE Inner Loop
Georgetown, Texas 78626

TO: American Constructors, Inc.
11900 West Parmer Lane
Cedar Park, TX 78613

INITIATION DATE: 7/27/2017

PROJECT NO.: 21522.00
CONTRACT DATE: 12/20/16

CONTRACT FOR: General Construction

Please submit an itemized quotation for changes in the Contract Sum and/or Time incidental to proposed modifications to the Contract Documents described herein.

Description: Incorporate the following revisions to the documents to clarify electrical power and lighting at the shade structure and to address various locations of electrical receptacles.

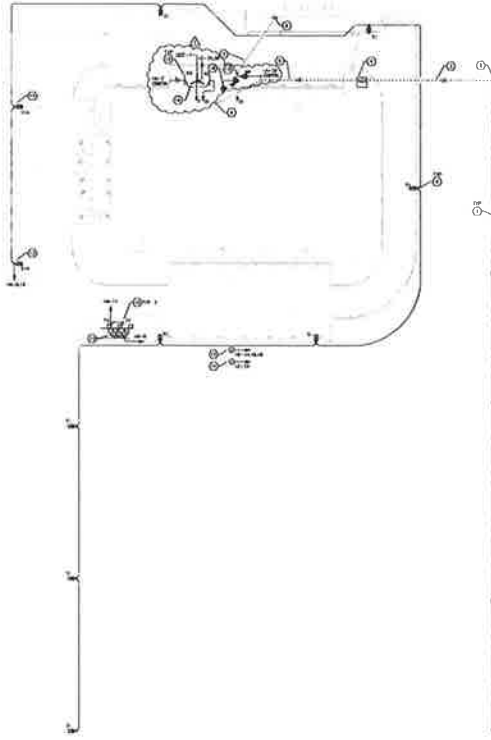
- Item No. 1. SHEET E100 (REFERENCE ATTACHED SHEET)
A. ADDED POWER FOR SHADE STRUCTURE LIGHTING AND FAN.
B. ADDED RECEPTACLES TO OUTDOOR COUNTERTOP AREA.
- Item No. 2. SHEET E112 (REFERENCE ATTACHED SHEET)
A. ADDED FIXTURE 'N2'.
B. ADDED CEILING FAN SCHEDULE FOR OUTDOOR FAN AT SHADE STRUCTURE.
- Item No. 3. SHEET E114 (REFERENCE ATTACHED SHEET)
A. REVISED PANEL SCHEDULES AS SHOWN.
- Item No. 4. SHEET E311 (REFERENCE ATTACHED SHEET)
A. ADDED EXTERIOR RECEPTACLES AS SHOWN.
B. REVISED LOCATION OF EXTERIOR RECEPTACLE AT MAIN ENTRY.
C. REVISED LOCATION OF RECEPTACLE IN ROOM 150.
D. ADDED SWITCH FOR TOWER SOFFIT RECEPTACLE IN ROOM 125.
- Item No. 5. SHEET E411 (REFERENCE ATTACHED SHEET)
A. ADDED RECEPTACLES AT ROOF HATCH AND SWITCHED RECEPTACLE AT TOWER SOFFIT.

Attachments: SHEET E100, SHEET E112, SHEET E114, SHEET E311, SHEET E411

END OF PROPOSAL REQUEST #09

ISSUED: BRINKLEY SARGENT WIGINTON ARCHITECTS
By: David Achterberg July 27, 2017

ARCHITECT DATE



01 SITE PLAN - ELECTRICAL
SCALE: 1" = 30'-0"

KEYED NOTES

- NEW NOTES ADDED TO THIS SHEET ARE:
1. ALL OVERHEAD ELECTRICAL SERVICE BY UTILITY COMPANY, LISTED EXACT LOCATION AND TYPE OF SERVICE.
 2. APPROXIMATE LOCATION OF METER BY UTILITY COMPANY, REFER TO UTILITY COMPANY FOR EXACT LOCATION AND METER LOCATION.
 3. APPROXIMATE LOCATION OF METER BY UTILITY COMPANY, REFER TO UTILITY COMPANY FOR EXACT LOCATION AND METER LOCATION.
 4. APPROXIMATE LOCATION OF METER BY UTILITY COMPANY, REFER TO UTILITY COMPANY FOR EXACT LOCATION AND METER LOCATION.
 5. APPROXIMATE LOCATION OF METER BY UTILITY COMPANY, REFER TO UTILITY COMPANY FOR EXACT LOCATION AND METER LOCATION.
 6. APPROXIMATE LOCATION OF METER BY UTILITY COMPANY, REFER TO UTILITY COMPANY FOR EXACT LOCATION AND METER LOCATION.
 7. APPROXIMATE LOCATION OF METER BY UTILITY COMPANY, REFER TO UTILITY COMPANY FOR EXACT LOCATION AND METER LOCATION.
 8. APPROXIMATE LOCATION OF METER BY UTILITY COMPANY, REFER TO UTILITY COMPANY FOR EXACT LOCATION AND METER LOCATION.
 9. APPROXIMATE LOCATION OF METER BY UTILITY COMPANY, REFER TO UTILITY COMPANY FOR EXACT LOCATION AND METER LOCATION.
 10. APPROXIMATE LOCATION OF METER BY UTILITY COMPANY, REFER TO UTILITY COMPANY FOR EXACT LOCATION AND METER LOCATION.
 11. APPROXIMATE LOCATION OF METER BY UTILITY COMPANY, REFER TO UTILITY COMPANY FOR EXACT LOCATION AND METER LOCATION.
 12. APPROXIMATE LOCATION OF METER BY UTILITY COMPANY, REFER TO UTILITY COMPANY FOR EXACT LOCATION AND METER LOCATION.
 13. APPROXIMATE LOCATION OF METER BY UTILITY COMPANY, REFER TO UTILITY COMPANY FOR EXACT LOCATION AND METER LOCATION.
 14. APPROXIMATE LOCATION OF METER BY UTILITY COMPANY, REFER TO UTILITY COMPANY FOR EXACT LOCATION AND METER LOCATION.
 15. APPROXIMATE LOCATION OF METER BY UTILITY COMPANY, REFER TO UTILITY COMPANY FOR EXACT LOCATION AND METER LOCATION.
 16. APPROXIMATE LOCATION OF METER BY UTILITY COMPANY, REFER TO UTILITY COMPANY FOR EXACT LOCATION AND METER LOCATION.
 17. APPROXIMATE LOCATION OF METER BY UTILITY COMPANY, REFER TO UTILITY COMPANY FOR EXACT LOCATION AND METER LOCATION.
 18. APPROXIMATE LOCATION OF METER BY UTILITY COMPANY, REFER TO UTILITY COMPANY FOR EXACT LOCATION AND METER LOCATION.
 19. APPROXIMATE LOCATION OF METER BY UTILITY COMPANY, REFER TO UTILITY COMPANY FOR EXACT LOCATION AND METER LOCATION.
 20. APPROXIMATE LOCATION OF METER BY UTILITY COMPANY, REFER TO UTILITY COMPANY FOR EXACT LOCATION AND METER LOCATION.

SITE LIGHTING CIRCUITING IS DIAGNOSTIC ONLY, DOES NOT INDICATE CONDUIT ROUTING. ELECTRICAL CONTRACTOR IS TO DETERMINE ALL FINAL CONDUIT ROUTING, COORDINATED WITH ALL SITE UTILITIES AND SITE CONDITIONS. REFER TO CIVIL AND LANDSCAPE PLANS FOR ADDITIONAL INFORMATION.

DO NOT BEGIN SITE UTILITY WORK UNTIL DRAWINGS HAVE BEEN RECEIVED FROM UTILITY COMPANY.

**WILLIAMSON COUNTY
SHERIFF'S OFFICE TRAINING CENTER**
8160 Chandler Road, Hutto, TX 78634

PROFESSIONAL SEAL

REGISTERED ELECTRICAL ENGINEER

STATE OF TEXAS

NO. 12345

DATE: 12/15/2023

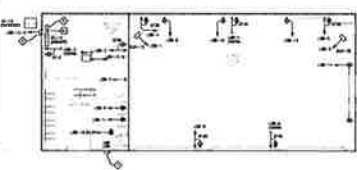
PROJECT: WILLIAMSON COUNTY SHERIFF'S OFFICE TRAINING CENTER

SHEET: E100

DATE: 12/15/2023

BRIMLEY SURGEON ARCHITECTS

ELECTRICAL DEVICE MOCK-UP
 ROUGH-IN ONE ENTIRE CLASSROOM FOR MOCK-UP APPROVAL. IN MOCK-UP, ROUGH-IN ALL DEVICES IN ROOM INCLUDING LIGHT SWITCHES, THERMOSTATS, P.A. RECEPTACLES, DATA, ETC. DO NOT ROUGH-IN ANY ADDITIONAL DEVICES UNTIL MOCK-UP IS APPROVED BY THE OWNER, ARCHITECT AND ENGINEER. ANY DEVICES THAT DON'T MEET APPROVED MOCK-UP LOCATIONS WILL BE REMOVED AND REINSTALLED IN CORRECT LOCATION AT CONTRACTOR'S EXPENSE.



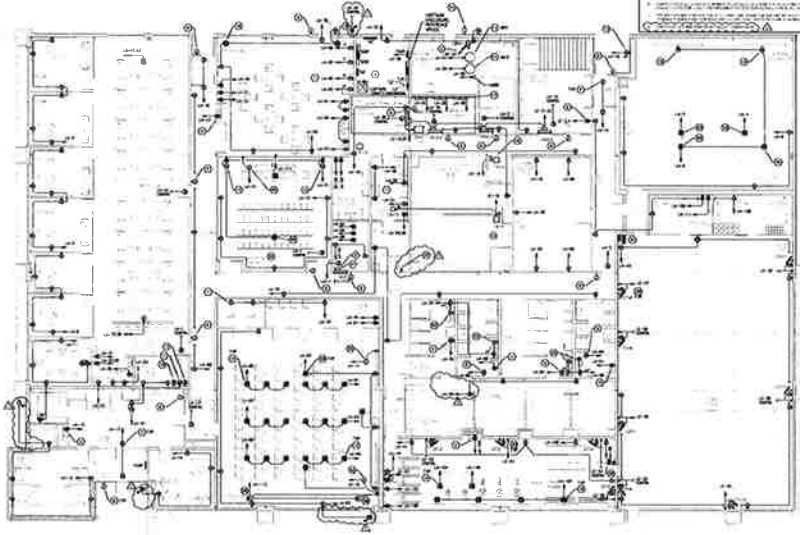
FOR LOCATIONS WHERE POWER AND DATA ARE SHOWN TOGETHER, DEVICE ROUGH-IN IS TO BE A MAXIMUM OF 7" APART. PROVIDE CADDY BRACKETS AS REQUIRED.

PROVIDE LIGHTING AND POWER IN GARAGE/SPACE AS REQUIRED.

KEYED NOTES
 SEE OTHER SHEETS FOR THE PROJECT ONLY

1. ALL ELECTRICAL WORK SHALL BE IN ACCORDANCE WITH THE NATIONAL ELECTRICAL CODE (NEC) AND ALL LOCAL ORDINANCES.
2. ALL ELECTRICAL WORK SHALL BE PERFORMED BY A LICENSED ELECTRICIAN.
3. ALL ELECTRICAL WORK SHALL BE SUBJECT TO INSPECTION AND APPROVAL BY THE LOCAL ELECTRICAL INSPECTOR.
4. ALL ELECTRICAL WORK SHALL BE SUBJECT TO INSPECTION AND APPROVAL BY THE LOCAL FIRE DEPARTMENT.
5. ALL ELECTRICAL WORK SHALL BE SUBJECT TO INSPECTION AND APPROVAL BY THE LOCAL HEALTH DEPARTMENT.
6. ALL ELECTRICAL WORK SHALL BE SUBJECT TO INSPECTION AND APPROVAL BY THE LOCAL ENVIRONMENTAL AGENCY.
7. ALL ELECTRICAL WORK SHALL BE SUBJECT TO INSPECTION AND APPROVAL BY THE LOCAL POLICE DEPARTMENT.
8. ALL ELECTRICAL WORK SHALL BE SUBJECT TO INSPECTION AND APPROVAL BY THE LOCAL COURT SYSTEM.
9. ALL ELECTRICAL WORK SHALL BE SUBJECT TO INSPECTION AND APPROVAL BY THE LOCAL LEGISLATURE.
10. ALL ELECTRICAL WORK SHALL BE SUBJECT TO INSPECTION AND APPROVAL BY THE LOCAL GOVERNMENT.

02 FLOOR PLAN - SUPPORT - POWER - ALTI



REFERENCE MECHANICAL FOR SWITCHING REQUIREMENTS.

REFERENCE TECHNOLOGY SHEETS FOR ALL DATA REQUIREMENTS.

ADD POWER FOR ALL RESTROOM/LOCKER ROOM SINKS FOR AUTOMATIC FAUCETS.

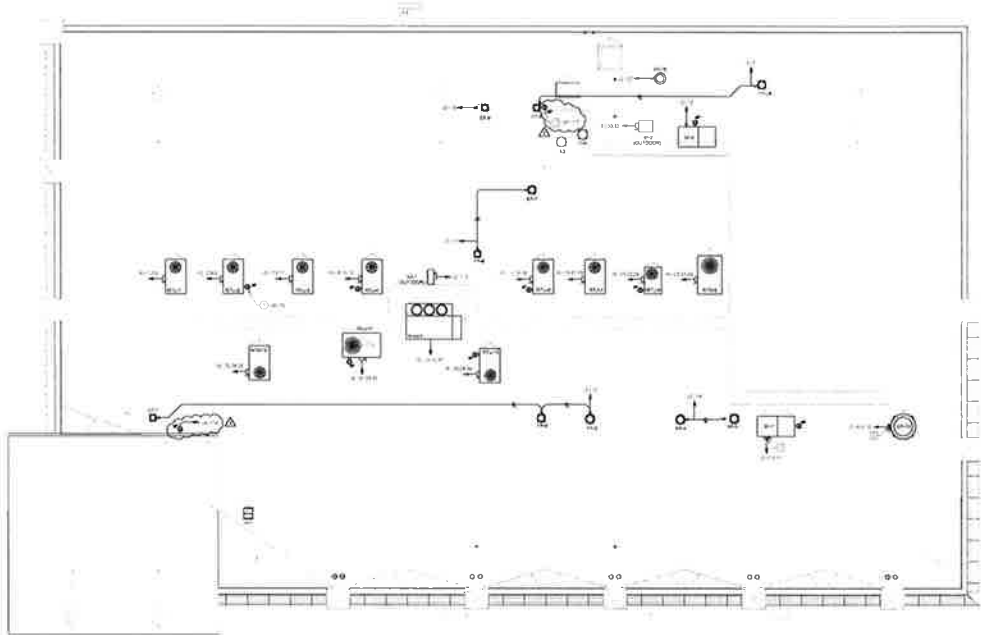
WILLIAMSON COUNTY SHERIFF'S OFFICE TRAINING CENTER
 8160 Chandler Road, Hutto, TX 78634



FLOOR PLAN - POWER

E311

BRINKLEY SARGENT WRIGHT ARCHITECTS



01 ROOF PLAN - POWER
DATE: 10/1/10

ELECTRICAL ROOF NOTES

- COORDINATE PLACEMENT OF DISCONNECTS WITH MECHANICAL CONTRACTORS TO PREVENT COLLISIONS WITH ROOF STRUCTURE.
- FIELD COORDINATE PLACEMENT AND MOUNTING REQUIREMENTS OF SERVICE RECEPTACLES, SWITCHES, AND OUTLETS WITH FINISHES.
- REFER TO ELECTRICAL CODES FOR MOUNTING REQUIREMENTS OF PANELS.
- COORDINATE MOUNTING OF ROOF MOUNTED PANELS, DISCONNECTS, AND TRANSFORMERS TO AVOID COLLISIONS WITH ROOF STRUCTURE.
- REFER TO ELECTRICAL CODES FOR MOUNTING REQUIREMENTS OF PANELS, DISCONNECTS, AND TRANSFORMERS TO AVOID COLLISIONS WITH ROOF STRUCTURE.
- REFERENCE ELECTRICAL CODES FOR ADDITIONAL REQUIREMENTS FOR ALL DISCONNECTS AND PANELS.

KEYED NOTES

SEE NOTES WITH IN THE BIDDING SET

① GREAT ROOF TOP RISES ARE TO BE USED TO CONDUIT LIFELINES

BRINKLEY SARGENT WISHTON ARCHITECTS
 10000 N. Loop West, Suite 1000
 Houston, Texas 77040
 Phone: 281.460.8000
 Fax: 281.460.8000
 Website: www.brinkleysargent.com

**WILLIAMSON COUNTY
 SHERIFF'S OFFICE TRAINING CENTER**
 8160 Chandler Road, Hutto, TX 78634



ROOF PLAN - POWER
 E411



Evergreen Power of Texas

P.O. Box 1639 Lampasas, Texas 76550

512.564.1388 OFC

512.564.1042 FAX

TO: AMERICAN CONSTRUCTORS

AUGUST 7, 2017

(512) 328-2026

RE: Sheriff's Office PR#09

Attn: Dustin Wiegiers

Dear Dustin,

Evergreen Power, LLC. is pleased to quote the above referenced PR#09 as follows:

Quote\$13,203.08

Sincerely,

Glen Stephens, President

(409) 877-9166 celll

WILCO SHERIFF'S OFFICE - PR#09

QTY	ITEM	MAT'L	UNIT	EXTEND	LABOR	UNIT	EXTEND
6 EA	GFI WP DUPLEX RECEPTACLE	\$ 30.00	EA	\$ 180.00	1 EA		6
2 EA	N2 FIXTURES	\$ 804.00	EA	\$ 1,608.00	2 EA		4
1 EA	OCF-1 CEILING FAN	\$ 5,100.00	EA	\$ 5,100.00	2 EA		2
1 EA	CEILING FAN SWITCH	\$ 50.00	EA	\$ 50.00	1 EA		1
3 EA	SINGLE POLE SWITCH	\$ 12.00	EA	\$ 36.00	1 EA		3
500 FT	3/4" EMT	\$ 0.57	FT	\$ 285.00	0.08 FT		40
60 EA	3/4" SS COUP	\$ 0.42	EA	\$ 25.20	0.01 EA		0.6
30 EA	3/4" SS CONN	\$ 0.42	EA	\$ 12.60	0.01 EA		0.3
75 EA	3/4" STRAPS	\$ 0.40	EA	\$ 30.00	0.1 EA		7.5
20 EA	4" SQ BOX	\$ 1.20	EA	\$ 24.00	0.3 EA		6
6 EA	WP COVER	\$ 10.00	EA	\$ 60.00	0.15 EA		0.9
14 EA	BLANK COVER	\$ 1.00	EA	\$ 14.00	0.1 EA		1.4
1 EA	BELL BOX	\$ 5.00	EA	\$ 5.00	0.3 EA		0.3
20 EA	MTG BRACKETS	\$ 3.50	EA	\$ 70.00	0.3 EA		6
2 EA	FIXTURE TAILS	\$ 10.00	EA	\$ 20.00	0.5 EA		1
1 EA	CEILING FAN TAIL	\$ 10.00	EA	\$ 10.00	0.5 EA		0.5
2,000 FT	#12 THHN	\$ 0.10	FT	\$ 200.00	0.008 EA		16
20 FT	UNISTRUT	\$ 2.00	FT	\$ 40.00	0.1 FT		2
20 FT	ALLTHREAD	\$ 0.60	FT	\$ 12.00	0.1 FT		2

TOTAL

7,781.80

LABOR RATE

Total Hours	100.5
Hourly Rate	42
Total Labor	4,221.00

MATERIAL 7,781.80
LABOR 4,221.00

TOTAL 12,002.80
10% O & P 1,200.28

TOTAL 13,203.08

