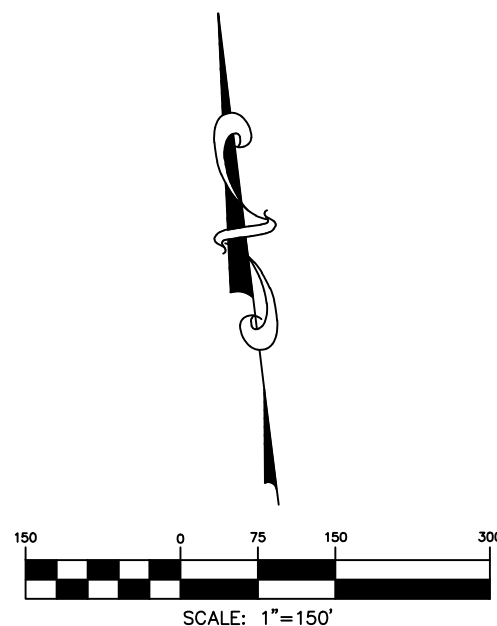
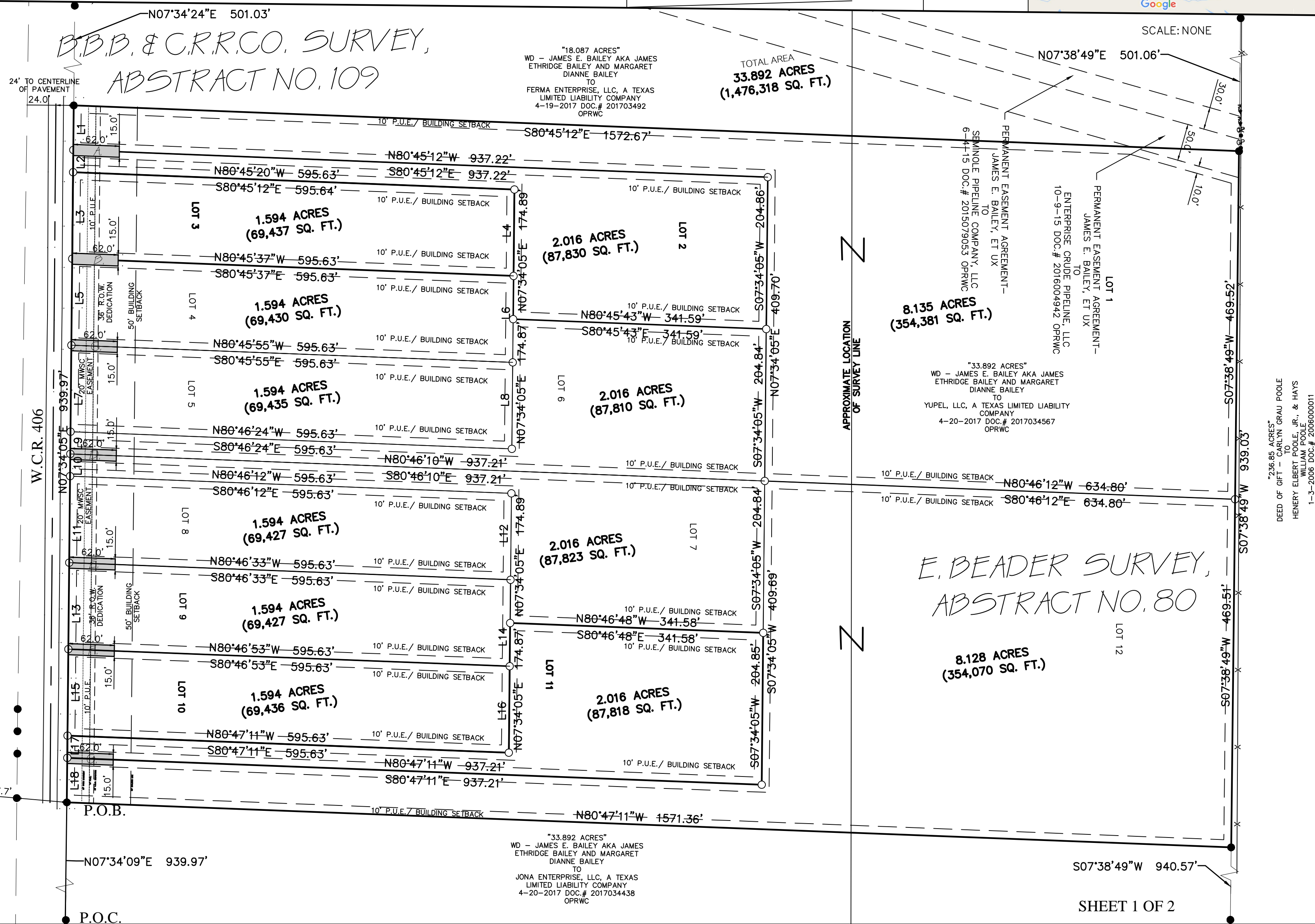
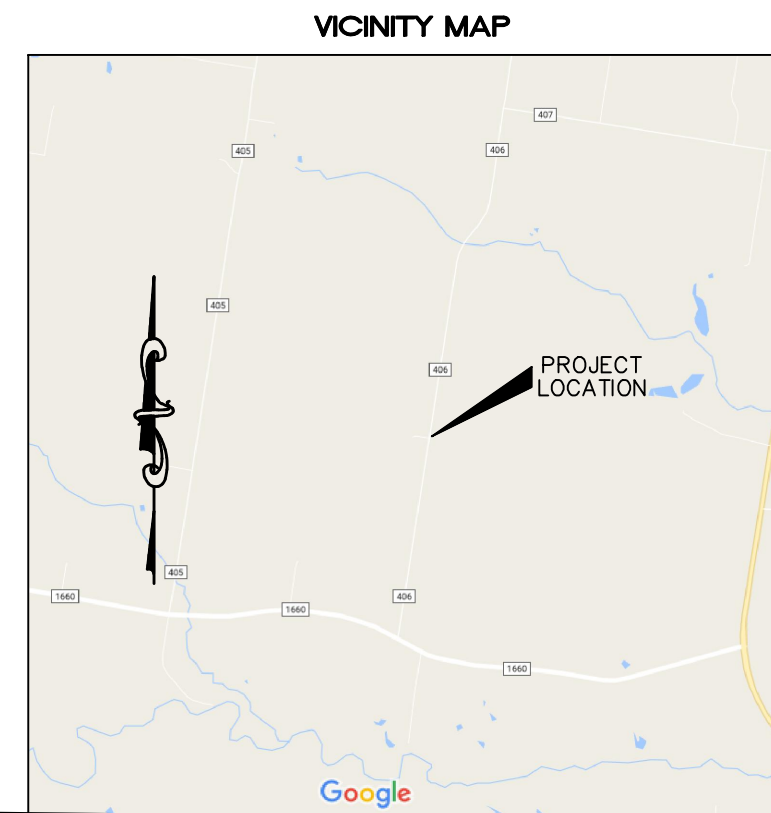
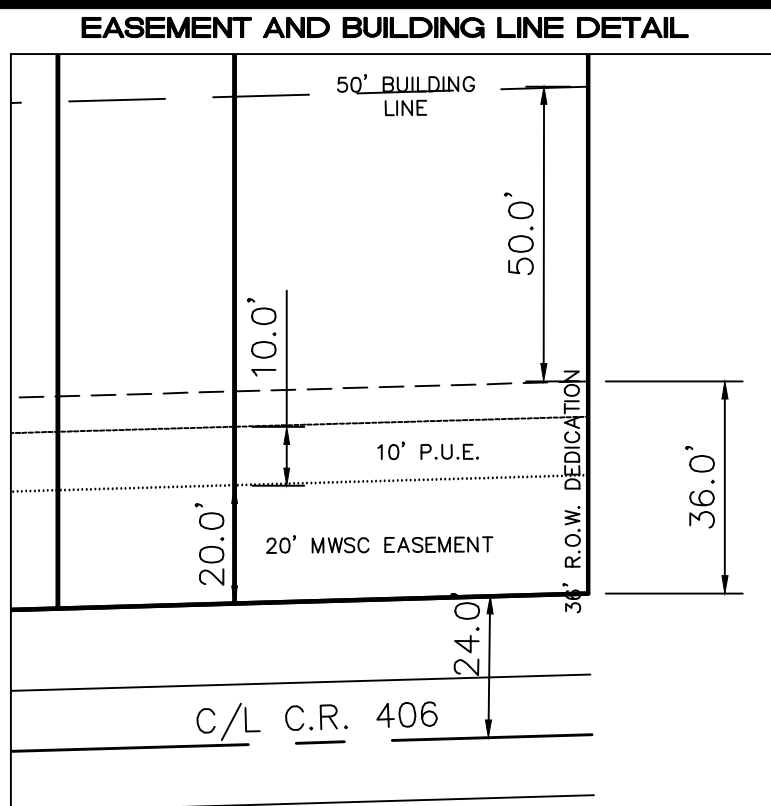


COUPLANDIA PRELIMINARY PLAT



SHARED DRIVEWAY EASEMENT	LOTS SERVED
A	1, 2
B	3, 4 OPTIONAL
C	4, 5
D	6, 7
E	8, 9 OPTIONAL
F	9, 10
G	11, 12



LINE	LENGTH	BEARING
L1	60.03	N07°34'05"E
L2	30.04	N07°34'05"E
L3	116.66	N07°34'05"E
L4	116.59	S07°34'05"W
L5	116.64	N07°34'05"E
L6	116.59	S07°34'05"W
L7	116.67	N07°34'05"E
L8	116.58	S07°34'05"W
L9	29.98	N07°34'05"E
L10	30.02	N07°34'05"E
L11	116.64	N07°34'05"E
L12	116.58	S07°34'05"W
L13	116.64	N07°34'05"E
L14	116.58	S07°34'05"W
L15	116.65	N07°34'05"E
L16	116.60	S07°34'05"W
L17	30.01	N07°34'05"E
L18	60.02	N07°34'05"E

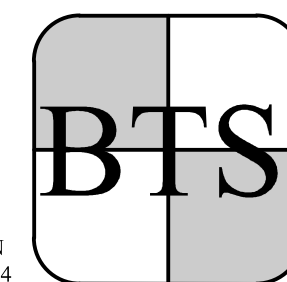
LEGEND:

- 1/2" IRON ROD SET
- IRON ROD FOUND
- BARBED WIRE FENCE

SERVICE PROVIDERS

- GAS - PROPANE TANKS
- WATER - MANVILLE WATER SUPPLY CORPORATION
- ELECTRIC - ONCOR
- TELECOMMUNICATION - CHARTER
- SEWER - SEWER SERVICE WILL BE PROVIDED BY ON-SITE SEWAGE FACILITIES

BRYAN TECHNICAL SERVICES, INC.



911 NORTH MAIN
TAYLOR, TX 76574

PHONE: (512) 352-9090
FAX: (512) 352-9091

FIRM No. 10128500
surveying@austin.rr.com
www.bryantechanicalservices.com

NO.	DATE	REVISIONS	BY
1.	8/16/2017	1ST REVIEW	PT
2.	8/28/2017	2ND REVIEW	PT

DRAWN BY: PT	CHECKED BY: BLB
SCALE: 1" = 150'	APPROVED BY: BLB
PROJECT NO. 17-420	DATE: JUNE 14, 2017

