

PROPOSAL REQUEST

BRINKLEY SARGENT WIGINTON ARCHITECTS

Distribution: OWNER ARCHITECT CONSULTANT CONTRACTOR FIELD OTHER

PROJECT: Williamson County Sheriff's Office Training Center
8160 Chandler Road
Hutto, TX 78634

PROPOSAL REQUEST NO: 12

OWNER: Williamson County
3151 SE Inner Loop
Georgetown, Texas 78626

TO: American Constructors, Inc.
11900 West Parmer Lane
Cedar Park, TX 78613

INITIATION DATE: 8/18/2017

CONTRACT FOR: General Construction

PROJECT NO.: 21522.00
CONTRACT DATE: 12/20/16

Please submit an itemized quotation for changes in the Contract Sum and/or Time incidental to proposed modifications to the Contract Documents described herein.

Description: Incorporate the following revisions to the documents to change the indicated toilet accessories to OFCI as requested by the Owner.

Item No. 1. 10 80 00 PR12 Toilet Accessories, 2.2 – Modify TA-01, TA-02, TA-03, TA-05, TA-30, TA-31 and TA-34.

Item No. 2. Sheet A270 – Modify locations as indicated.

Attachments: 10 80 00 PR12 Toilet Accessories, A270 - ENLARGED FLOOR PLANS

END OF PROPOSAL REQUEST #12

Note that this PCO includes pricing of \$5000.00 for inclusion of hand dryers that were added in the Bid Issue documents, and is included here to avoid issuing another PCO to reconcile the Bid Issue set.

DAA/BSWA 2017-11-06

ISSUED: BRINKLEY SARGENT WIGINTON ARCHITECTS
By: David Achterberg August 18, 2017

ARCHITECT

DATE

SECTION 10 80 00 PR12 TOILET AND BATH ACCESSORIES

PART 1 GENERAL

1.1 SUMMARY

- A. Section Includes
 - 1. Toilet and bath accessories listed herein.
 - 2. Rough-in frames supplies to other sections.
 - 3. Attachment hardware and related blocking.
- B. Related Sections
 - 1. Section 04 22 00: Concrete Unit Masonry.
 - 2. Section 09 29 00: Gypsum Board System.
 - 3. Section 10 15 50: Toilet Compartments.

1.2 REFERENCE STANDARDS

- A. ASTM A-167 - Stainless and Heat-Resisting Chromium-Nickel Steel Plate, Sheet and Strip.
- B. ASTM A-336 - Cold-rolled Carbon Steel Sheets, Commercial Quality.

1.3 PRODUCT DATA

- A. Submit manufacturer's product data in accordance with Section 01300.
- B. Data to illustrate each accessory at large scale and show installation method.

1.4 DELIVERY, STORAGE AND HANDLING

- A. Do not deliver accessories to site until rooms in which they are to be installed are ready to receive them.
- B. Pack accessories individually in a manner to protect accessory and its finish.
- C. Protect adjacent or adjoining finished surfaces and work from damage during installation of work of this Section.

PART 2 PRODUCTS

2.1 ACCEPTABLE MANUFACTURERS, subject to the requirements stated herein.

- A. Bobrick Washroom Equipment, Inc.
- B. Bradley
- C. American Specialties, Inc.

2.2 SCHEDULE OF ACCESSORIES [Bobrick numbers, U.N.O.]

PR 12	TA-01:	TorkMatic Hand Towel Roll Dispenser 5510282 (OFCl) <ul style="list-style-type: none">1. Provide one for every sink if no other towel dispenser is scheduled.2. Mount with slot 48" AFF.
PR 12	TA-02:	Not Used.
PR 12	TA-03:	Recessed Waste Receptacle, B-3644: Typical, where indicated (stainless steel) (CFCl)

1. Mount with ADA range between 42" to 46" AFF.
- PR 12 TA-05: Toilet Paper Dispenser, Tork Twin Mini Jumbo Bath Tissue Roll dispenser 5555290.(OFCl)
 1. Provide one for every water closet.
 2. Mount top at 28".
- TA-07: Electric Hand Dryer: Dyson AB 14 quieter version with water catch basin built in.
 1. Provide minimum of one at each toilet room with toilet partitions.
 1. Coordinate requirements with electrical [at time of submittal].
 2. Surface mount, with maximum 4" projection from wall (ADA compliant).
 3. Vandal resistant cast iron construction with porcelain enamel finish.
 3. Automatic function.
- TA-10: Grab Bar, 24", B5806 x 24
 1. Provide where indicated.
 2. Mount at 34" to centerline above finished floor, max. 6" from the side wall.
- TA-11: Grab Bar, 36", B5806 x 36
 1. Provide where indicated.
 2. Mount at 34" to centerline above finished floor, max. 6" from the side wall.
- TA-12: Grab Bar, 42", B5806 x 42
 1. Provide where indicated.
 2. Mount at 34" to centerline above finished floor, minimum 12" from the rear wall.
- TA-13: Grab Bar, 48", B5806 x 48
 1. Provide where indicated.
 2. Mount at 34" to centerline above finished floor, minimum 12" from the rear wall.
- TA-15: Shower Grab Bars, L-Shaped B58616.99
 1. Provide at each accessible shower.
 2. Mount (consistently) at 33"-36" to centerline above finished floor.
- TA-20: Framed Mirror, B290, 2060
- TA-23: Not Used.
- PR 12 TA-30: Not Used.
- PR 12 TA-31: Touch-Free Foaming Soap Dispenser, GoJoLTX-12 (OFCl)
 Provide at all sinks and lavatories where indicated.
- PR 12 TA-34: Shower Soap Dispenser, Radiance 1250ml Dark Gray/White Foam Dispenser, 10084407 (OFCl)
 1. Provide at each shower.
 2. Mount dispenser operator at 44" AFF.
- TA-35: Robe/Coat Hook: B-7672.
 Provide one at each shower stall and where shown on Drawings.
 1. Coordinate blocking to occur behind these hooks.
- TA-42: Shower rod and curtain, provide at all shower stalls.
 1. Rod, B-6047.
 2. Mounting height: 6'-8" clear, showers coordinated to go to curb
 3. Curtain, B-204, heavy duty vinyl, stainless steel grommets, sized to fit stalls. Provide an appropriate number of stainless steel hooks, B204-1, for proper installation. Color to be selected by Architect from manufacturer's standard color line.

- TA-43: Feminine Napkin Disposal
1. B-254, surface-mounted. Provide where indicated in walls
 2. Where not indicated, assume one applicable disposal at each female toilet.

- TA-50: Mop Rack, B223 x 36"
1. Mount adjacent to mop sinks so drippings go into the sink.

2.3 Finish

- A. Exposed Metal: Stainless steel satin finish, unless otherwise noted in the schedule.

2.4 Attachment Components

- A. Adhesives: Epoxy-type contact cement.
- B. Fasteners, Screws, and Bolts: Hot-dip galvanized.
- C. Expansion Shields: Fiber, lead or rubber as recommended by the accessory manufacturer.

2.5 Fabrication

- A. Weld and grind smooth all joints.
- B. Form exposed surfaces from one sheet of stock, free of joints.
- C. Provide steel anchor plates and anchor components for installation on building finishes.
- D. Form surfaces flat without distortions. Maintain flat surfaces without scratches or dents.
- E. Back paint components where contact is made with building finishes.
- F. Hot dip galvanized ferrous metal anchors and fastening devices.
- G. Shop assemble components and package complete with anchors and fittings.

PART 3 EXECUTION

3.1 Preparation

- A. Deliver inserts and rough-in frames to job site at an appropriate time for building-in. Provide templates and rough-in measurements as required.
- B. Before starting work, notify Architect in writing of any conflicts detrimental to installation or operation of units.
- C. Verify with Architect exact location of accessories if not shown on Drawings.
- D. Coordinate and provide blocking behind accessories as required for heavy duty service/ use.

3.2 Installation

- A. Install fixtures, accessories, and items in accordance with manufacturer's printed instructions.
- B. Install true, plumb and level, securely and rigidly anchored to substrate for long life under hard use.

END OF SECTION

AECOM | Dallas Regional Warrant Architects | (512) 419-0100
 Landscape | HALL Architecture, Inc. | (512) 277-4800
 Structure | Douglas M. Williams, Inc. | (512) 218-0000
 MEP | Harbo Construction Engineers | (512) 218-0000
 CIVIL | HALL Architecture, Inc. | (512) 277-4800
 Technology | Dominion Design Group | (512) 418-0001

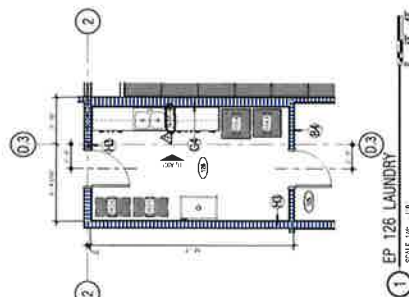
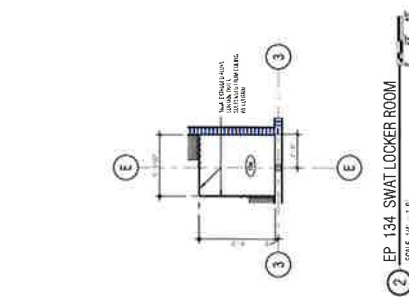
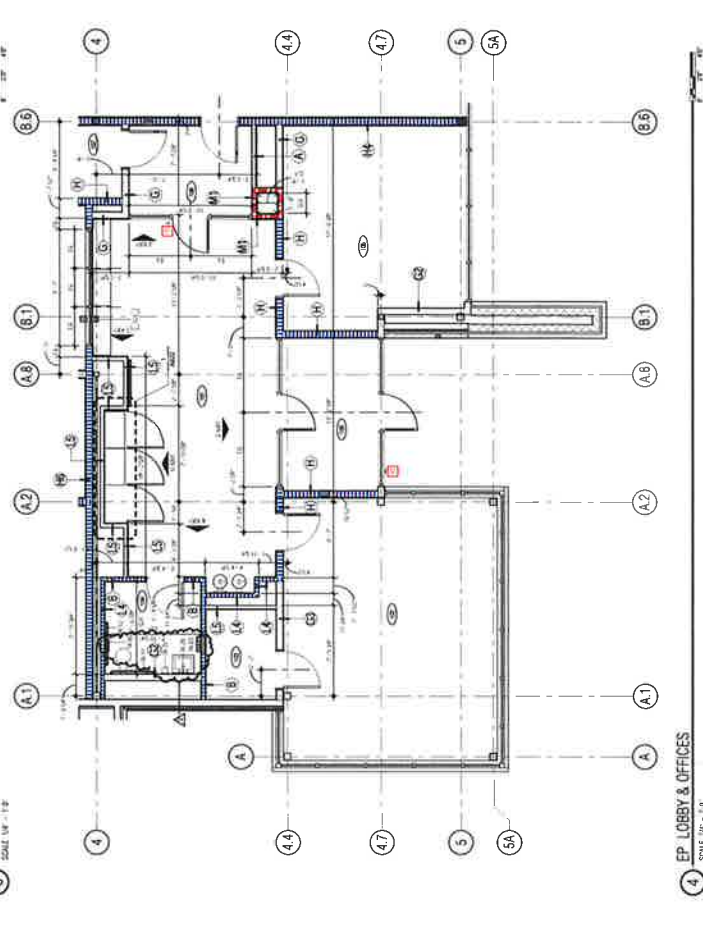
WILLIAMSON COUNTY SHERIFF'S OFFICE TRAINING CENTER

8160 Chandler Road, Hutto, TX 78634



ENLARGED FLOOR PLANS

A270



Dustin Wieggers

From: Erich <erich@slaterpainting.com>
Sent: Friday, September 8, 2017 12:56 PM
To: Grant Huling
Cc: Dustin Wieggers
Subject: RE: 21522 WCSOTC - RFI 043-Crash Rails

Follow Up Flag: Follow up
Flag Status: Flagged

Cost for the changes per PR12 for the toilet accessories is \$4,336. Installation of the hand dryers is excluded and is to be done by the electrician. Let me know if this is accepted and I will start on submittals

SLATER PAINTING CHANGE PROPOSAL

PROJECT:
WCSOTC

DESCRIPTION	QNTY	UNIT	LABOR		COST	MATERIALS	PROJECT
			INSTALL	TOTAL		TOTAL	TOTALS
Bobrick Toilet Accessories	1	LS	0.00	0	1431.000	-1431	-1431
Add AB14 Hand Dryers	4	EA	0.00	0	1250.000	5000	5000
Add OFCI Shower Soap Install	12	LS	12.00	144	0.000	0	144
SUBTOTAL			12	144		3569	3713
BURDEN	40.00	%		58			58
SALES TAX		%				0	0
SUBTOTAL				202		3569	3771
					O & P	0.15	566
					TOTAL		\$4,336

Erich de Bruyn
Project Manager/Estimator, Div. 10
Slater Painting Company, Inc.
9607 Gray Blvd
Austin, TX 78758
Office (512)451-4246 Ext. 212
Fax (512)452-3609
Cell (512)415-6246

From: Grant Huling [mailto:ghuling@acitexas.com]
Sent: Tuesday, August 29, 2017 11:02 AM
To: Erich