

Dustin Wieggers

From: Doug Windle <doug@aceaudiocom.com>
Sent: Wednesday, November 29, 2017 12:59 PM
To: Dustin Wieggers
Subject: RE: 21522 WCSOTC - PR15 AV Changes

Well I cut almost \$60k from this pricing with video recording. I can provide material equipment lists if requested.

Updated Pricing for PR15 – 11-29-2017

- Item #1 - \$63,898.00
- (3) Vaddio Pan/Tilt/Zoom Cameras
 - o (1) Cameras for Training Room
 - o (2) Cameras for Defense Tactics
- Ceiling Microphones for Training and Defense Tactics
- Wireless Mic for Instructor in Defense Tactics
- Audio DSP for additional microphone inputs
- Upgrade HDMI and HDBaseT Matrix Switchers for centralized matrix switching and future expansion
- Changed control system to centralized controller
- Added 12" Tabletop touchpanel for Training Room
- Includes credit for iPad – Moved this credit from Weight Room TV.
- Optional 4 channels of HDMI Video Recording with Network Storage ADD \$18,559.00
- Optional 2nd Camera for Training Room ADD \$7,146.00

Item No. 1. Sheet AV001 - LEGEND AND NOTES - AUDIO VISUAL
A. Added in-ceiling cameras (and infrastructure as needed) to the Audio Visual Devices. Active Equipment provided by the AV Integrator as an "add".

Item #2

- Additional Poke thru \$930.00 – Cable already included for AV input Plate

Item No. 2. Sheet AV101 – FLOOR PLAN - AUDIO VISUAL
A. Added an AV Poke-Thru floor box to the lectern position in the Training Room
B. Deleted the AVP location on north wall of Training Room

Item #3A

- Additional Speaker in Operations Briefing Room - \$1,263.00
 - o Items #3B & 3C part of my Item #1 above

- Item No. 3. Sheet AV201 - RCP - AUDIO VISUAL
- A. Added four (4) in-ceiling speakers for audio reinforcement in the Operations Briefing room.
 - B. Added four (4) in-ceiling cameras the Training Room. Active Equipment design to be provided by the A an "add".
 - C. Added two (2) in-ceiling cameras (and infrastructure as needed) in Defense Tactics. Active Equipment provided by the AV Integrator as an "add".

Item #4 – Additional Data Outlets – Not in our scope of work

- Item No. 4. Sheet T101 – T101 FLOOR PLAN - COMMUNICATIONS
- A. Added Data at AV Poke-Thru floor box to the lectern position in the Training Room #157.
 - B. Added Data for four (4) in-ceiling cameras the Training Room #157.
 - C. Added Data for two (2) in-ceiling cameras in Defense Tactics #143.
 - D. Added Data for Irrigation Controller located on exterior of North wall outside Mechanical room #129.
 - E. Added Data for HVAC Control Panels in two locations, rooms 124 and 129.

Item #5A – Included in Item #3A above

Item #5B – Included in Item #2A above

- Item No. 5. Sheet AV402 - GENERAL DETAILS - AUDIO VISUAL
- A. Added four (4) in-ceiling speakers for audio reinforcement in the Operations Briefing room #121 1-Line
 - B. Specified location of AV Transmitters (TRS) at Poke-Thru locations in Training Room #157 1-Line draw

Item #6 – Additional TVs in weight room – \$2,951.00

In Pr 024

- (1) Samsung TV and owner provided, contractor installed TV Tuner
- Option to ADD 2nd Samsung TV and owner provided, contractor installed TV Tuner - \$2,951.00

- Item No. 6. Sheet AV403 GENERAL DETAILS - AUDIO VISUAL
- A. Added 1-Line drawing for Weight Room #144 depicting four (4) Flat panel displays and four (4) CATV Ti

Item #7 – Additional Power – Not in our scope of work

- Item No. 7. Sheet E311 – FLOOR PLAN – POWER
- A. Relocate wall switches and wall outlets in Training Room 157
 - B. Added power for irrigation controller
 - C. Added power for HVAC control panels in Rooms 124 and 129

Optional Add alternate – Upgrade Wireless Mics - \$4,182.00

- Newer Digital Wireless Technology
 - o Less chance of frequency problems in the future
 - o Smaller bandwidth required
 - o More available frequencies to choose from
- Provides ability to monitor from touchpanel and iPad app.
 - o Signal Strength
 - o Battery Levels
 - o Audio Levels
 - o On/Off Status
- Metal cases on transmitters instead of plastic cases
 - o Allows for transmitter to last longer
- Includes (10) total Li-Ion Rechargeable batteries with charger

Optional AV Podium in Training Room - \$8,217.00

- Middle Atlantic AV Podium
 - o Laminate color to be determined
- Document Camera
- Video Switcher for Laptop, Document Camera, and owner provided, contractor installed PC.

63,898
18,559
7,146
. 930
1,263

4,182
8,217

Thanks,

**Doug Windle
Audio Visual Manager
ACE Audio Communications Inc.
P.O. Box 609
Hutto, TX 78634**

Total 104,195

**(512) 218-4043 Office
(512) 535-4673 Fax
(512) 694-2048 Cell**



PROPOSAL REQUEST

BRINKLEY SARGENT WIGINTON ARCHITECTS

Distribution: OWNER ARCHITECT CONSULTANT CONTRACTOR FIELD OTHER

PROJECT: Williamson County Sheriff's Office Training Center
8160 Chandler Road
Hutto, TX 78634

PROPOSAL REQUEST NO: 26

OWNER: Williamson County
3151 SE Inner Loop
Georgetown, Texas 78626

TO: American Constructors, Inc.
11900 West Parmer Lane
Cedar Park, TX 78613

INITIATION DATE: 2/7/2018

CONTRACT FOR: General Construction

PROJECT NO.: 21522.00
CONTRACT DATE: 12/20/16

Please submit an itemized quotation for changes in the Contract Sum and/or Time incidental to proposed modifications to the Contract Documents described herein.

Description: Incorporate the following revisions to the documents to incorporate AV changes from the AV coordination meeting.

- Item No. 1. Sheet AV001 - LEGEND AND NOTES - AUDIO VISUAL
 - A. Added in-ceiling cameras (and infrastructure as needed) to the Audio Visual Devices. Active Equipment design to be provided by the AV Integrator as an "add".
- Item No. 2. Sheet AV101 - FLOOR PLAN - AUDIO VISUAL
 - A. Added an AV Poke-Thru floor box to the lectern position in the Training Room #157.
 - B. Deleted the AVP location on north wall of Training Room #157.
- Item No. 3. Sheet AV201 - RCP - AUDIO VISUAL
 - A. Added four (4) in-ceiling speakers for audio reinforcement in the Operations Briefing room #121.
 - B. Added two (2) in-ceiling cameras the Training Room #157. Active Equipment design to be provided by the AV Integrator as an "add".
 - C. Added two (2) in-ceiling cameras (and infrastructure as needed) in Defense Tactics #143. Active Equipment design to be provided by the AV Integrator as an "add".
- Item No. 4. Sheet T101 - T101 FLOOR PLAN - COMMUNICATIONS
 - A. Added Data at AV Poke-Thru floor box to the lectern position in the Training Room #157.
 - B. Added Data for two (2) in-ceiling cameras the Training Room #157.
 - C. Added Data for two (2) in-ceiling cameras in Defense Tactics #143.
- Item No. 5. Sheet AV402 - GENERAL DETAILS - AUDIO VISUAL
 - A. Added four (4) in-ceiling speakers for audio reinforcement in the Operations Briefing room #121, 1-Line drawing.
 - B. Specified location of AV Transmitters (TRS) at Poke-Thru locations in Training Room #157, 1-Line drawing.
- Item No. 6. Sheet E311 - FLOOR PLAN - POWER
 - A. Relocate wall switches and wall outlets in Training Room #157.

Attachments: Sheet AV001 - LEGEND AND NOTES - AUDIO VISUAL, Sheet AV101 - FLOOR PLAN - AUDIO VISUAL, Sheet AV201 - RCP - AUDIO VISUAL, Sheet T101 - T101 FLOOR PLAN - COMMUNICATIONS, Sheet AV402 GENERAL DETAILS - AUDIO VISUAL, Sheet E311 - FLOOR PLAN - POWER

END OF PROPOSAL REQUEST #26

ISSUED: BRINKLEY SARGENT WIGINTON ARCHITECTS
By: David Achterberg February 7, 2018

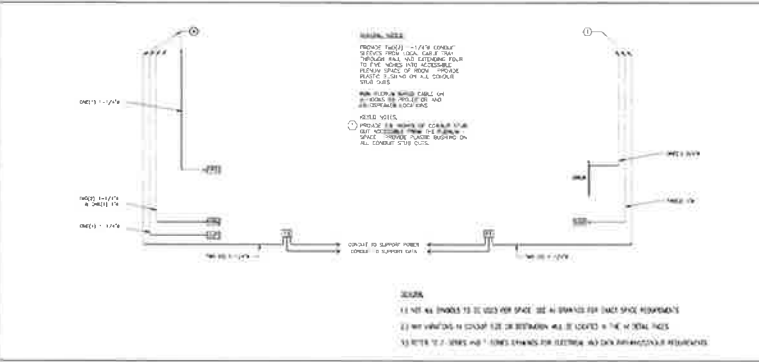
ARCHITECT _____ DATE _____

AUDIOVISUAL DEVICES

AUDIOVISUAL ONE-LINE CONDUIT DETAIL (TYPICAL)

NOTES: 1. ALL DEVICES SHALL BE INSTALLED IN ACCORDANCE WITH THE SPECIFICATIONS OF THE MANUFACTURER. 2. ALL DEVICES SHALL BE INSTALLED IN ACCORDANCE WITH THE SPECIFICATIONS OF THE MANUFACTURER. 3. ALL DEVICES SHALL BE INSTALLED IN ACCORDANCE WITH THE SPECIFICATIONS OF THE MANUFACTURER.

SYMBOL	DEVICES	TYPE	LOCATION	HEIGHT	INSTALLATION NOTES	NOTES	DETAIL
AV-01	AV-01	AV-01	AV-01	AV-01	AV-01	AV-01	AV-01
AV-02	AV-02	AV-02	AV-02	AV-02	AV-02	AV-02	AV-02
AV-03	AV-03	AV-03	AV-03	AV-03	AV-03	AV-03	AV-03
AV-04	AV-04	AV-04	AV-04	AV-04	AV-04	AV-04	AV-04
AV-05	AV-05	AV-05	AV-05	AV-05	AV-05	AV-05	AV-05
AV-06	AV-06	AV-06	AV-06	AV-06	AV-06	AV-06	AV-06
AV-07	AV-07	AV-07	AV-07	AV-07	AV-07	AV-07	AV-07
AV-08	AV-08	AV-08	AV-08	AV-08	AV-08	AV-08	AV-08
AV-09	AV-09	AV-09	AV-09	AV-09	AV-09	AV-09	AV-09
AV-10	AV-10	AV-10	AV-10	AV-10	AV-10	AV-10	AV-10
AV-11	AV-11	AV-11	AV-11	AV-11	AV-11	AV-11	AV-11
AV-12	AV-12	AV-12	AV-12	AV-12	AV-12	AV-12	AV-12
AV-13	AV-13	AV-13	AV-13	AV-13	AV-13	AV-13	AV-13
AV-14	AV-14	AV-14	AV-14	AV-14	AV-14	AV-14	AV-14
AV-15	AV-15	AV-15	AV-15	AV-15	AV-15	AV-15	AV-15
AV-16	AV-16	AV-16	AV-16	AV-16	AV-16	AV-16	AV-16
AV-17	AV-17	AV-17	AV-17	AV-17	AV-17	AV-17	AV-17
AV-18	AV-18	AV-18	AV-18	AV-18	AV-18	AV-18	AV-18
AV-19	AV-19	AV-19	AV-19	AV-19	AV-19	AV-19	AV-19
AV-20	AV-20	AV-20	AV-20	AV-20	AV-20	AV-20	AV-20



TYPICAL AV SYMBOL IDENTIFIERS



TYPICAL SYMBOL TYPES



GENERAL NOTES

- FOR PLUMBING AREA, HIGH VOLTAGE IS DEFINED AS ANY CABLE, WIRE OR OTHER ELEMENT OPERATING ABOVE 100 VOLTS.
- THE ELECTRICAL CONTRACTOR SHALL PROVIDE ALL MATERIALS, COMPONENTS, TOOLS, AND LABOR NECESSARY TO MEET VOICE/DATA REQUIREMENTS FOR ALL AV EQUIPMENT THAT REQUIRES INSTALLATION AS INDICATED IN AV AND TELECOMMUNICATIONS DRAWINGS AND SPECIFICATIONS.
- THE ELECTRICAL CONTRACTOR IS RESPONSIBLE FOR THE FOLLOWING SCOPE OF WORK:
 - COORDINATE WITH DESIGN TEAM ON CONTROL SYSTEM ELEMENTS INCLUDING WALL MOUNTED CONTROLS, PANELS AND LIGHTING FIXTURES.
 - PROVIDE AND INSTALL:
 - THE "AV" LABELING CONTROL SYSTEM, RELATED PERMITS AND LOW VOLTAGE CONTROL WIRING ASSOCIATED WITH THE "AV" LABELING CONTROL SYSTEM.
 - PROVIDE AND INSTALL ALL CONDUIT, APPROPRIATE PULL STRIPS, ELECTION BOXES, FLOOR HOLES, MIN-ANS, GUTTERS, SURFACE MOUNTED POWER STRIPS, LIGHTING GREATER PANELS, AC WIRING, POWER RECEPTACLES, AND OTHER ELECTRICAL EQUIPMENT AS REQUIRED TO ACCOMMODATE CONTROL AND FUNCTIONAL AUDIO VISUAL SYSTEMS, UNLESS OTHERWISE NOTED.
 - BRUSH UP EACH BOX COVER PLATES, CONDUIT AND BULBS TO MATCH COLOR AND FINISH AND ABANDON THEM UP INSTALLATION.
 - PROVIDE S-UP DRAWINGS OF CONDUIT ROUTING AND BOX PLACEMENT FOR REVIEW AND APPROVAL BY THE STRUCTURAL ENGINEER PRIOR TO IMPLEMENTATION.
 - CONDUIT FOR LOW VOLTAGE WIRING SHALL:
 - BE INSTALLED IN WALLS OR IN CEILING OR FLOOR IN CASE OF PENETRATIONS.
 - BE IN CONCRETE OR IN ALL AREAS IN CAST CONCRETE.
 - BE SUPPORTED WITH VISION WALL STRIPS.
 - BE 100' MAX LENGTH AND USE IN INTERMEDIATE JUNCTION BOX.
 - BE INSTALLED IN WALLS WITH SUPPORT AN APPROVED JUNCTION BOX.
 - BE INSTALLED IN WALLS WITH SUPPORT AND NOT EXCEED 100' OF SPAN BETWEEN PULL POINTS.
 - WALL HOLES SHALL:
 - BE INSTALLED BEFORE AND AFTER COMPLETION OF CONSTRUCTION.
 - NOT BE USED IN LIEU OF TOP CURBS.
 - NOT BE USED TO CHANGE DIRECTION OF RUN WITH BOX, AND BE INSTALLED AS PROVIDED TO MEET THE ABOVE REQUIREMENTS.
- OTHER APPLICABLE SUBSEQUENT TO HIS RESPONSIBILITY FOR PROVIDING AND INSTALLING THE FOLLOWING:
 - STRUCTURAL WORK, CEILING WALL OPENINGS, PLATFORMS, ISLANDS, HVAC SYSTEMS, WIRING AND WIRING.
 - CONDUCTIVE SERVICES AND RELATED CABLES AND CONNECTIONS, IV RELATED ANTENNA SYSTEMS AND ELECTRICAL BONDING AS REQUIRED FOR CONNECTIONS OF AUDIOVISUAL DEVICES.
- RESTORATION:
 - COORDINATE ANY AND ALL RESTORATION WITH THE GENERAL CONTRACTOR BEFORE PROCEEDING WITH ANY WORK INVOLVING RESTORATION.
 - ALL RESTORATION SHALL CONFORM TO THE SPECIFICATIONS AND RECOMMENDATION OF THE PLUMBING AND MASTICURE PROTECTION ON RECONSTRUCTION OF THROUGH PENETRATIONS SYSTEM IN THE CONSTRUCTION SPECIFICATIONS DOCUMENT.
 - SEALING AND S-UP DRAWINGS/SUBMITTALS FOR FINE STOP MATERIALS AND SYSTEMS SHALL BE PROVIDED TO THE GENERAL CONTRACTOR FOR WRITTEN APPROVAL OF MATERIALS AND SYSTEMS PRIOR TO PURCHASE AND INSTALLATION. ALL MATERIALS AND SYSTEMS SHALL BE COMPLETELY UL LISTED FOR IN-BUILDING INSTALLATION AND PROVIDE APPROPRIATE RATING AT THE COMPLETION OF JOB.
 - SEAL ALL PENETRATIONS THROUGH FLOORING BARRIERS (GENDOTS, SLEEVES, SLOTS, CHIMES) CREATED BY OR MADE FOR OR ON OR ON THE BEHALF OF THE ELECTRICAL CONTRACTOR TO PREVENT THE INGRESS OF SMOKE, FIRE, TOXIC GAS, OR WATER THROUGH PENETRATIONS.
 - CONTRACTOR SHALL PROVIDE TRAINING MANUALS WHICH INCLUDES INSTRUCTIONS ON METHODS OF ADDING OR REMOVING CABLES TO/FROM PRE-INSTALLED SLEEVES AND CHIMES.
 - REFER TO SPECIFICATIONS FOR ADDITIONAL REQUIREMENTS.

ABBREVIATIONS

SYMBOL	DESCRIPTION
AV-01	AV-01
AV-02	AV-02
AV-03	AV-03
AV-04	AV-04
AV-05	AV-05
AV-06	AV-06
AV-07	AV-07
AV-08	AV-08
AV-09	AV-09
AV-10	AV-10
AV-11	AV-11
AV-12	AV-12
AV-13	AV-13
AV-14	AV-14
AV-15	AV-15
AV-16	AV-16
AV-17	AV-17
AV-18	AV-18
AV-19	AV-19
AV-20	AV-20

CONSTRUCTION NOTES

- AV-01: AV-01
- AV-02: AV-02
- AV-03: AV-03
- AV-04: AV-04
- AV-05: AV-05
- AV-06: AV-06
- AV-07: AV-07
- AV-08: AV-08
- AV-09: AV-09
- AV-10: AV-10
- AV-11: AV-11
- AV-12: AV-12
- AV-13: AV-13
- AV-14: AV-14
- AV-15: AV-15
- AV-16: AV-16
- AV-17: AV-17
- AV-18: AV-18
- AV-19: AV-19
- AV-20: AV-20

WILLIAMSON COUNTY SHERIFF'S OFFICE TRAINING CENTER
8160 Chandler Road, Georgetown TX 78626

BRINKLEY SARGENT WIGSTON ARCHITECTS

LEGEND AND NOTES - AUDIO VISUAL

BID ISSUE



FLOOR PLAN - AUDIO VISUAL

**WILLIAMSON COUNTY
SHERIFF'S OFFICE TRAINING CENTER**
8160 Chandler Road, Georgetown TX 78626

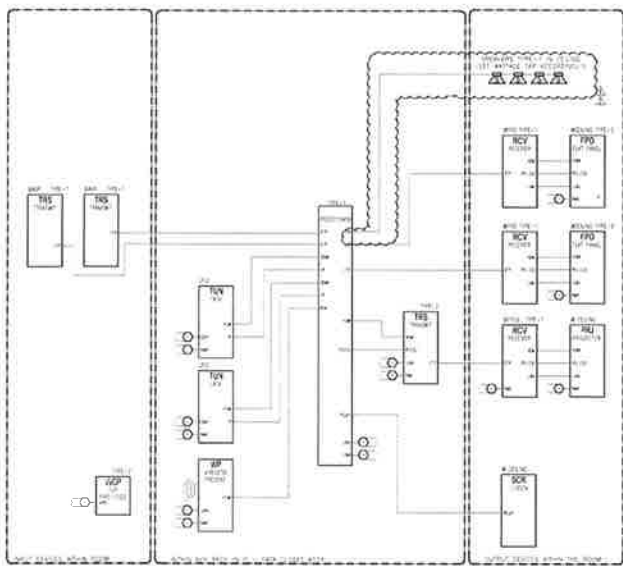
NO.	DATE	DESCRIPTION
1	10/15/10	ISSUE FOR BIDDING
2	10/15/10	ISSUE FOR BIDDING
3	10/15/10	ISSUE FOR BIDDING
4	10/15/10	ISSUE FOR BIDDING

DICK'S
CORPORATION
10000 North Loop West
Houston, Texas 77037
713.865.1234

FLOOR PLAN -
AUDIO VISUAL

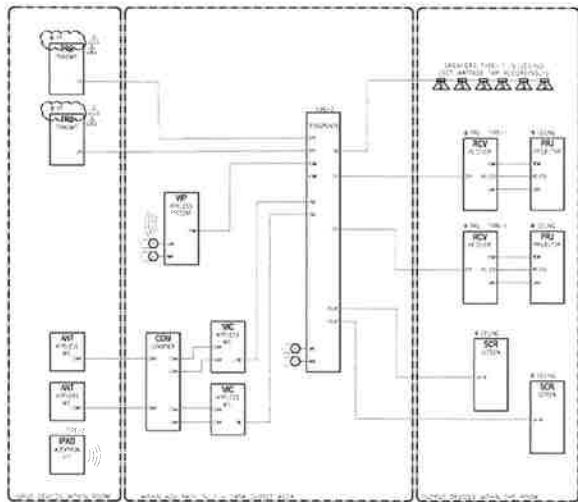
1000
AV101

BRINKLEY SARGENT WIGHTON ARCHITECTS



NOT TO SCALE - DRAWING NUMBER 412

ONE-LINE DETAILS - AUDIO VISUAL - 1



NOT TO SCALE - DRAWING NUMBER 413

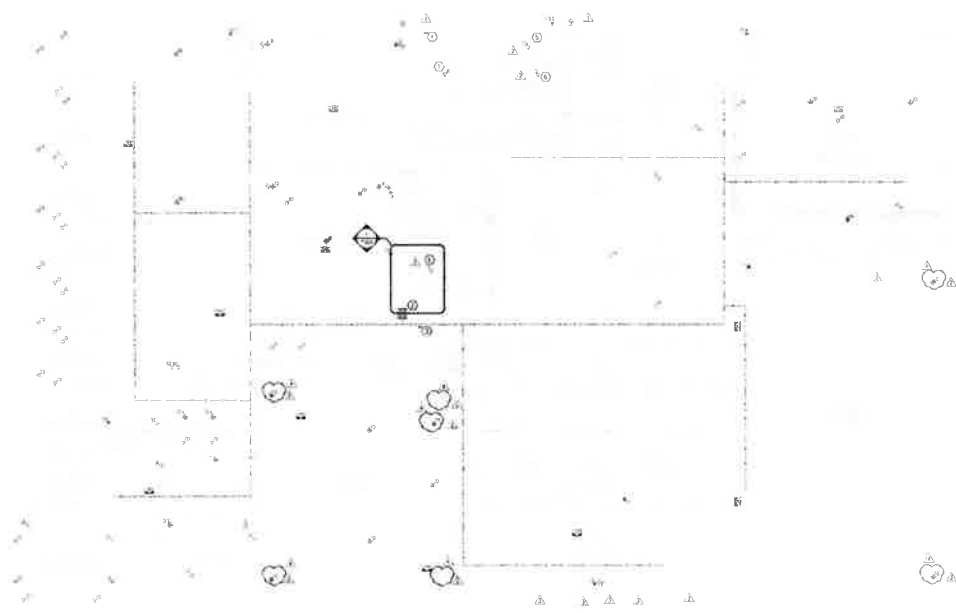
ONE-LINE DETAILS - AUDIO VISUAL - 2

**WILLIAMSON COUNTY
SHERIFF'S OFFICE TRAINING CENTER**
8160 Chandler Road, Georgetown TX 78626

BRINKLEY SARGENT WIGHTMAN ARCHITECTS

PROJECT NO. 100-100-100-100-100-100
DATE: 10/10/10
DRAWN BY: [Name]
CHECKED BY: [Name]
SCALE: AS SHOWN

BID ISSUE
AV402



GENERAL NOTES:

- 1) VERIFY THE FINAL TERMINATIONS AND LOCATIONS OF CABLES INSTALLED IN WOODLAP FLOORING OR ARCHITECTURAL JELLYWORK WITH THE ARCHITECT PRIOR TO ROUGH-IN AND INSTALLATION.
- 2) PROVIDE CONDUIT SELVES THROUGH PARTITIONS TO CENTRAL MEANS OF CONDUITANCE.
- 3) VERIFY ALL JUNCTION LOCATIONS AND THEIR MOUNTING HEIGHTS WITH THE ARCHITECTURAL DOCUMENTS PRIOR TO ROUGH-IN.
- 4) REFER TO THE ARCHITECTURAL DRAWINGS FOR FINAL LOCATION AND DIMENSIONS FOR ALL FLOOR BOXES.

FIELD NOTES:

- 1) DATA CONNECTION TO SERVER BUILDING ROOMS - SEE SYSTEM CONFIG FIELD LOCATION WITH DATE ON 2/22/2018 CONTRACTOR'S FIELD TO REVISIONS.
- 2) 1/2" DIA. 1/2" RADIUS BUREAU.
- 3) 1/2" DIA. 1/2" RADIUS CONDUIT SHALL BE 1/2" HOSE AND REFERENCED TO EACH SYMBOL.
- 4) 1/2" DIA. 1/2" RADIUS TO BE USED FOR THE CONNECTIONS.
- 5) DATA CONNECTION TO SERVER BY WIRELESS CONTROLLER CONNECTION WITH THE SERVER ROOM TO ROOM 101.
- 6) DATA CONNECTION TO SERVER BY WIRELESS CONTROLLER CONNECTION WITH THE SERVER ROOM TO ROOM 101.

FLOOR PLAN - COMMUNICATIONS
DATE: 1/11/18

**WILLIAMSON COUNTY
SHERIFF'S OFFICE TRAINING CENTER**
8160 Chandler Road, Georgetown TX 78626

NO.	DATE	DESCRIPTION
1	01/11/18	ISSUE
2	01/11/18	REVISED
3	01/11/18	REVISED

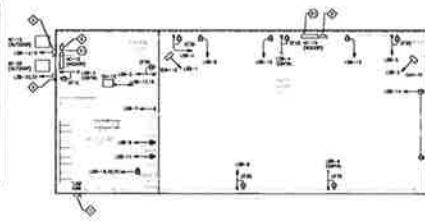
BID ISSUE

T101

BRINKLEY SARGENT WIGHTON ARCHITECTS

ELECTRICAL DEVICE MOCK-UP

ROUGH-IN ONE ENTIRE CLASSROOM FOR MOCK-UP APPROVAL. IN MOCK-UP, ROUGH-IN ALL DEVICES IN ROOM INCLUDING LIGHT SWITCHES, THERMOSTATS, P/A, RECEPTACLES, DATA, ETC. DO NOT ROUGH-IN ANY ADDITIONAL DEVICES UNTIL MOCK-UP IS APPROVED BY THE OWNER, ARCHITECT AND ENGINEER. ANY DEVICES THAT DON'T MEET APPROVED MOCK-UP LOCATIONS WILL BE REMOVED AND REINSTALLED IN CORRECT LOCATION AT CONTRACTOR'S EXPENSE.



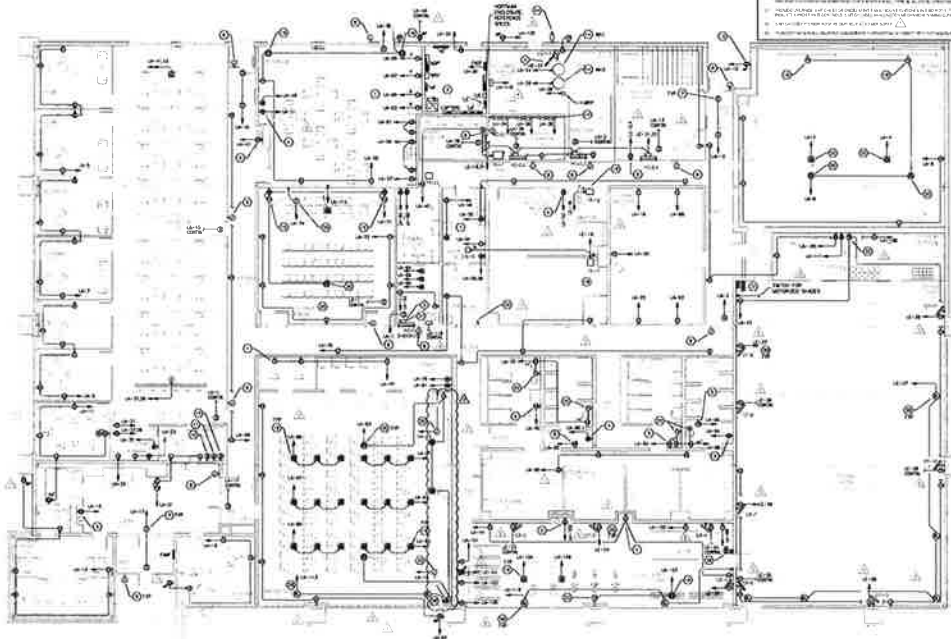
FOR LOCATIONS WHERE POWER AND DATA ARE SHOWN TOGETHER, DEVICE ROUGH-IN IS TO BE A MAXIMUM OF 6" APART. PROVIDE CADDY BRACKETS AS REQUIRED.

PROVIDE LIGHTING AND POWER IN CHAMFSPACE AS REQUIRED

KEYED NOTES

- THESE NOTES APPLY TO THIS SHEET ONLY
1. ALL ELECTRICAL WORK SHALL BE IN ACCORDANCE WITH THE NATIONAL ELECTRICAL CODE (NEC) AND THE NATIONAL FIRE ALARM CODE (NFPA).
 2. ALL ELECTRICAL WORK SHALL BE IN ACCORDANCE WITH THE LATEST EDITIONS OF THE NATIONAL ELECTRICAL CODE (NEC) AND THE NATIONAL FIRE ALARM CODE (NFPA).
 3. ALL ELECTRICAL WORK SHALL BE IN ACCORDANCE WITH THE LATEST EDITIONS OF THE NATIONAL ELECTRICAL CODE (NEC) AND THE NATIONAL FIRE ALARM CODE (NFPA).
 4. ALL ELECTRICAL WORK SHALL BE IN ACCORDANCE WITH THE LATEST EDITIONS OF THE NATIONAL ELECTRICAL CODE (NEC) AND THE NATIONAL FIRE ALARM CODE (NFPA).
 5. ALL ELECTRICAL WORK SHALL BE IN ACCORDANCE WITH THE LATEST EDITIONS OF THE NATIONAL ELECTRICAL CODE (NEC) AND THE NATIONAL FIRE ALARM CODE (NFPA).
 6. ALL ELECTRICAL WORK SHALL BE IN ACCORDANCE WITH THE LATEST EDITIONS OF THE NATIONAL ELECTRICAL CODE (NEC) AND THE NATIONAL FIRE ALARM CODE (NFPA).
 7. ALL ELECTRICAL WORK SHALL BE IN ACCORDANCE WITH THE LATEST EDITIONS OF THE NATIONAL ELECTRICAL CODE (NEC) AND THE NATIONAL FIRE ALARM CODE (NFPA).
 8. ALL ELECTRICAL WORK SHALL BE IN ACCORDANCE WITH THE LATEST EDITIONS OF THE NATIONAL ELECTRICAL CODE (NEC) AND THE NATIONAL FIRE ALARM CODE (NFPA).
 9. ALL ELECTRICAL WORK SHALL BE IN ACCORDANCE WITH THE LATEST EDITIONS OF THE NATIONAL ELECTRICAL CODE (NEC) AND THE NATIONAL FIRE ALARM CODE (NFPA).
 10. ALL ELECTRICAL WORK SHALL BE IN ACCORDANCE WITH THE LATEST EDITIONS OF THE NATIONAL ELECTRICAL CODE (NEC) AND THE NATIONAL FIRE ALARM CODE (NFPA).
 11. ALL ELECTRICAL WORK SHALL BE IN ACCORDANCE WITH THE LATEST EDITIONS OF THE NATIONAL ELECTRICAL CODE (NEC) AND THE NATIONAL FIRE ALARM CODE (NFPA).
 12. ALL ELECTRICAL WORK SHALL BE IN ACCORDANCE WITH THE LATEST EDITIONS OF THE NATIONAL ELECTRICAL CODE (NEC) AND THE NATIONAL FIRE ALARM CODE (NFPA).
 13. ALL ELECTRICAL WORK SHALL BE IN ACCORDANCE WITH THE LATEST EDITIONS OF THE NATIONAL ELECTRICAL CODE (NEC) AND THE NATIONAL FIRE ALARM CODE (NFPA).
 14. ALL ELECTRICAL WORK SHALL BE IN ACCORDANCE WITH THE LATEST EDITIONS OF THE NATIONAL ELECTRICAL CODE (NEC) AND THE NATIONAL FIRE ALARM CODE (NFPA).
 15. ALL ELECTRICAL WORK SHALL BE IN ACCORDANCE WITH THE LATEST EDITIONS OF THE NATIONAL ELECTRICAL CODE (NEC) AND THE NATIONAL FIRE ALARM CODE (NFPA).
 16. ALL ELECTRICAL WORK SHALL BE IN ACCORDANCE WITH THE LATEST EDITIONS OF THE NATIONAL ELECTRICAL CODE (NEC) AND THE NATIONAL FIRE ALARM CODE (NFPA).
 17. ALL ELECTRICAL WORK SHALL BE IN ACCORDANCE WITH THE LATEST EDITIONS OF THE NATIONAL ELECTRICAL CODE (NEC) AND THE NATIONAL FIRE ALARM CODE (NFPA).
 18. ALL ELECTRICAL WORK SHALL BE IN ACCORDANCE WITH THE LATEST EDITIONS OF THE NATIONAL ELECTRICAL CODE (NEC) AND THE NATIONAL FIRE ALARM CODE (NFPA).
 19. ALL ELECTRICAL WORK SHALL BE IN ACCORDANCE WITH THE LATEST EDITIONS OF THE NATIONAL ELECTRICAL CODE (NEC) AND THE NATIONAL FIRE ALARM CODE (NFPA).
 20. ALL ELECTRICAL WORK SHALL BE IN ACCORDANCE WITH THE LATEST EDITIONS OF THE NATIONAL ELECTRICAL CODE (NEC) AND THE NATIONAL FIRE ALARM CODE (NFPA).

02 FLOOR PLAN - SUPPORT - POWER - ALTI



REFERENCE MECHANICAL FAN SCHEDULE FOR EXHAUST FAN SWITCHING REQUIREMENTS

REFERENCE TECHNOLOGY SHEETS FOR ALL DATA REQUIREMENTS.

01 FLOOR PLAN - POWER

WILLIAMSON COUNTY SHERIFF'S OFFICE TRAINING CENTER
8160 Chandler Road, Hutto, TX 78634



FLOOR PLAN - POWER

E311

BID SET

BRINKLEY SARGENT WIGINTON ARCHITECTS

