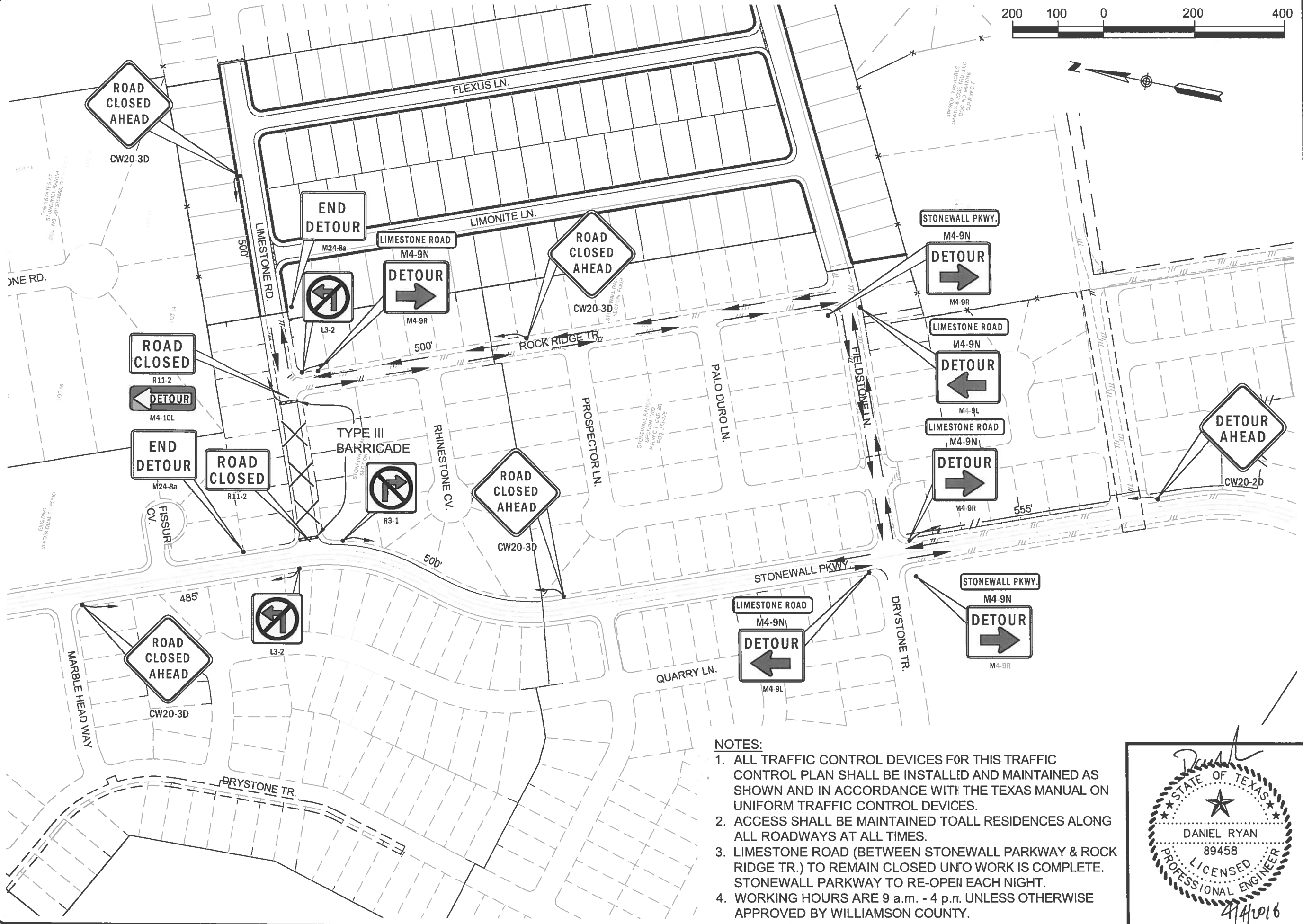
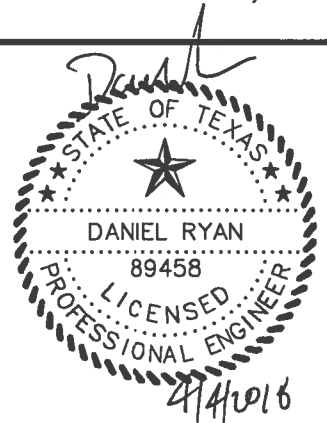


I:\A343 RSI Communities\408C Stonewall Section 6\transmittal\received\3-6-18\Traffic Control\sheeta\tcp-ovl.dwg



NOTES:

1. ALL TRAFFIC CONTROL DEVICES FOR THIS TRAFFIC CONTROL PLAN SHALL BE INSTALLED AND MAINTAINED AS SHOWN AND IN ACCORDANCE WITH THE TEXAS MANUAL ON UNIFORM TRAFFIC CONTROL DEVICES.
2. ACCESS SHALL BE MAINTAINED TO ALL RESIDENCES ALONG ALL ROADWAYS AT ALL TIMES.
3. LIMESTONE ROAD (BETWEEN STONEWALL PARKWAY & ROCK RIDGE TR.) TO REMAIN CLOSED UNTO WORK IS COMPLETE. STONEWALL PARKWAY TO RE-OPEN EACH NIGHT.
4. WORKING HOURS ARE 9 a.m. - 4 p.m. UNLESS OTHERWISE APPROVED BY WILLIAMSON COUNTY.



**STONEWALL RANCH, SECTION SIX
STREET CUT PERMIT**

TRAFFIC CONTROL & DETOUR EXHIBIT

LJA Engineering, Inc.
5316 Highway 290 West
Suite 150
Austin, Texas 78735
Phone 512.439.4700
Fax 512.439.4716
FRN - F-1386

tcp-ovl.dwg

1 OF 4