



3171 SE Inner Loop  
Georgetown, TX  
78626

T: (512) 663-7461  
F: (512) 681-9752

March 09, 2018

Dwayne Gossett  
Williamson County, Texas  
3101 SE Inner Loop  
Georgetown, TX 78620

Re: North Campus Facilities

Job No: 233901

Subj: Change Proposal No. 233901-0050

Dear Sir or Madam:

We respectfully submit our proposal for an increase to our contract in the amount of \$0 (zero) dollars to provide Data Layout Changes in Reference to Returned Submittal 271100-3-0 for the above referenced project.

Our price is valid for Ten (10) days

Please indicate your acceptance of this change proposal by signing and returning one copy of the attached Form B breakdown of our cost.

Very truly yours,  
VAUGHN CONSTRUCTION



Doug Boram

Attachments: Form B, Subcontractor Pricing Back-up

CC: Brody Harris - BLGY  
Mark Brown - BLGY

**FORM B**

**PROJECT: North Campus Facilities**

**CHANGE PROPOSAL NO: 233901-0050**

**QUOTATION :**

<b>Item</b>	<b>Labor</b>	<b>Materials</b>	<b>Subs</b>	<b>Total</b>
Data Layout Changes in Reference to Returned Submittal 271100-3-0	\$0.00	\$0.00	\$4,392.00	\$4,392.00
To Be Funded By CM Contingency	\$0.00	\$(4,392.00)	\$0.00	\$(4,392.00)

<b>Totals</b>	\$0.00	\$(4,392.00)	\$4,392.00	\$0.00
	<b>Insurance, Tax, Benefits on Labor</b>			\$0.00
	<b>Overhead</b>			\$0.00
	<b>Fee on Subs</b>			\$0.00
	<b>Fee on JTV</b>			\$0.00
	<b>Bond</b>			\$0.00
	<b>Remodel Tax</b>			\$0.00
<hr/>				
	<b>TOTAL</b>			<b>\$0.00</b>

**TIME EXTENSION TO CONTRACT: 4 Working Days**

**Submitted Date: 3/9/2018**

**Accepted**

By: 

Date \_\_\_\_\_

**VAUGHN CONSTRUCTION**

By:   
Doug Boram

**Proposal Valid for 10 Days**

Funds Tracking Log



Change Proposal No.	Change Type & No.	Time Extension (Days)		Cost of Work	CM Contingency	GMP Breakdown			Construction Phase Fee	GMP #2339.01	Total Updated Contract Amount
		Pending	Approved			Owner Contingency	General Conditions	Buyout Savings			
N/A	GMP	-	-	\$18,195,395	\$406,771	\$406,771	\$1,896,522		\$625,467	\$21,530,926	\$21,530,926
1	OCO	0	0	\$3,659	\$0	(\$3,659)	\$0		\$0	\$0	\$21,530,926
2	OCO	10	10	\$114,186	\$0	(\$114,186)	\$0		\$0	\$0	\$21,530,926
3	OCO	0	0	\$1,727	\$0	(\$1,748)	\$21		\$0	\$0	\$21,530,926
4	OCO	0	0	\$19,494	\$0	(\$19,494)	\$0		\$0	\$0	\$21,530,926
5	OCO	0	0	\$19,676	\$0	(\$19,676)	\$0		\$0	\$0	\$21,530,926
6	OCO	0	0	\$14,465	(\$14,465)	\$0	\$0		\$0	\$0	\$21,530,926
7	OCO	0	0	\$2,237	\$0	(\$2,237)	\$0		\$0	\$0	\$21,530,926
8	OCO	0	0	\$3,450	\$0	(\$3,450)	\$0		\$0	\$0	\$21,530,926
9	OCO	0	0	\$832	\$0	(\$832)	\$0		\$0	\$0	\$21,530,926
10	OCO	0	0	\$285	\$0	(\$285)	\$0		\$0	\$0	\$21,530,926
11	OCO	0	0	\$22,415	\$0	(\$22,415)	\$0		\$0	\$0	\$21,530,926
12	OCO	0	0	\$11,221	\$0	(\$11,221)	\$0		\$0	\$0	\$21,530,926
13	OCO	0	0	(\$5,000)	\$0	\$5,000	\$0		\$0	\$0	\$21,530,926
14	OCO	0	0	\$0	\$0	\$0	\$0		\$0	\$0	\$21,530,926
15	OCO	0	0	\$79,584	\$0	(\$79,584)	\$0		\$0	\$0	\$21,530,926
16	OCO	0	0	\$9,930	\$0	(\$9,930)	\$0		\$0	\$0	\$21,530,926
17	OCO	0	0	\$2,450	(\$2,450)	\$0	\$0		\$0	\$0	\$21,530,926
18	OCO	0	0	\$1,747	(\$1,747)	\$0	\$0		\$0	\$0	\$21,530,926
19	OCO	0	0	(\$1,763)	\$0	\$0	\$1,763		\$0	\$0	\$21,530,926
20	OCO	0	0	\$5,784	\$0	(\$5,856)	\$72		\$0	\$0	\$21,530,926
21	OCO	0	0	\$10,364	(\$10,364)	\$0	\$0		\$0	\$0	\$21,530,926
22	OCO	0	0	\$6,410	(\$6,461)	\$0	\$51		\$0	\$0	\$21,530,926
23	OCO	0	0	\$15,825	(\$15,825)	\$0	\$0		\$0	\$0	\$21,530,926
24	OCO	0	0	\$33,487	(\$33,906)	\$0	\$419		\$0	\$0	\$21,530,926
25	OCO	0	0	\$8,854	(\$8,854)	\$0	\$0		\$0	\$0	\$21,530,926
26	OCO	0	0	(\$106)	\$0	\$106	\$0		\$0	\$0	\$21,530,926
27R	OCO	0	0	\$2,687	\$0	(\$2,687)	\$0		\$0	\$0	\$21,530,926
28	Void	0	0	\$0	\$0	\$0	\$0		\$0	\$0	\$21,530,926
29	OCO	0	0	\$3,647	(\$3,647)	\$0	\$0		\$0	\$0	\$21,530,926
30	OCO	0	0	(\$30,000)	\$0	\$30,000	\$0		\$0	\$0	\$21,530,926
31	OCO	0	0	\$4,434	\$0	(\$4,434)	\$0		\$0	\$0	\$21,530,926

32	OCO	0	0	\$6,816	\$0	(\$6,816)	\$0	\$0	\$0	\$0	\$0	\$0	\$0	\$21,530,926
33R	OCO	0	-	(\$28,265)	\$0	\$28,265	\$0	\$0	\$0	\$0	\$0	\$0	\$0	\$21,530,926
34	OCO	0	0	\$5,273	(\$5,273)	\$0	\$0	\$0	\$0	\$0	\$0	\$0	\$0	\$21,530,926
35	OCO	0	0	(\$168,250)	\$0	\$0	\$0	\$0	\$0	\$0	\$0	\$0	(\$168,250)	\$21,362,676
36	OCO	0	0	\$1,280	(\$1,280)	\$0	\$0	\$0	\$0	\$0	\$0	\$0	\$0	\$21,362,676
37	OCO	0	0	\$1,601	(\$1,601)	\$0	\$0	\$0	\$0	\$0	\$0	\$0	\$0	\$21,362,676
38R	OCO	0	-	\$4,646	(\$4,646)	\$0	\$0	\$0	\$0	\$0	\$0	\$0	\$0	\$21,362,676
39R	OCO	10	10	\$0	\$0	\$0	\$0	\$0	\$0	\$0	\$0	\$0	\$0	\$21,362,676
40R	OCO	0	0	(\$6,292)	\$0	\$6,292	\$0	\$0	\$0	\$0	\$0	\$0	\$0	\$21,362,676
41	OCO	0	0	(\$50,311)	\$0	\$50,311	\$0	\$0	\$0	\$0	\$0	\$0	\$0	\$21,362,676
42R	OCO	0	-	(\$44,494)	\$0	\$44,494	\$0	\$0	\$0	\$0	\$0	\$0	\$0	\$21,362,676
43R	OCO	0	0	\$24,129	\$0	(\$24,129)	\$0	\$0	\$0	\$0	\$0	\$0	\$0	\$21,362,676
44R	OCO	0	0	\$4,882	\$0	(\$4,882)	\$0	\$0	\$0	\$0	\$0	\$0	\$0	\$21,362,676
45R	OCO	0	-	\$25,500	(\$25,500)	\$0	\$0	\$0	\$0	\$0	\$0	\$0	\$0	\$21,362,676
46	OCO	120	-	\$1,304,051	\$0	\$0	\$132,086	(\$135,504)	\$49,367	\$1,350,000	\$22,712,676	\$22,712,676	\$22,712,676	
47	OCO	0	-	\$1,112	\$0	(\$1,126)	\$14	\$0	\$0	\$0	\$22,712,676	\$22,712,676	\$22,712,676	
48	OCO	0	-	\$35,771	\$0	(\$36,181)	\$410	\$0	\$0	\$0	\$22,712,676	\$22,712,676	\$22,712,676	
49	OCO	0	0	\$2,541	(\$2,573)	\$0	\$32	\$0	\$0	\$0	\$22,712,676	\$22,712,676	\$22,712,676	
50	OCO	4	-	\$4,392	(\$4,392)	\$0	\$0	\$0	\$0	\$0	\$22,712,676	\$22,712,676	\$22,712,676	
<b>Current Amounts</b>		<b>144</b>	<b>20</b>	<b>\$19,681,758</b>	<b>\$244,111</b>	<b>\$216,087</b>	<b>\$2,031,390</b>	<b>(\$135,504)</b>	<b>\$674,834</b>	<b>\$22,712,676</b>	<b>\$22,712,676</b>	<b>\$22,712,676</b>	<b>\$22,712,676</b>	



# REQUEST FOR CHANGE

**RFC #** 001  
**RFC Date** 2/27/2018  
**Project Name:** Wilco North Campus Facilities  
**Project Number:**  
**Page Number:** 1

Client Address:

**Vaughn Construction**

3171 SE Inner Loop  
Georgetown, TX 78626

---

**Work Description**

---

We are pleased to offer the following change proposal for your review. Titus Group proposes to furnish labor and material for a complete structured cable installation in accordance with **Bldg H 2 Data Outlets Changing to 6** dated 02/16/2018.

**RFC# 001 PRICE: 4,392.00**

**SCOPE:**

This RFC includes additional costs for material and labor to install, terminate, & test 4 additional CAT6 data cables to 6 outlet locations in Building H Training Room H100A.

1. Install 4 additional data cables from IDF H113 to Training Room H100A outlets - 6 locations as designated on the attached drawing.
2. Install CAT6 jacks at both ends for each cable and terminate.
3. Label jacks & cables at both ends for each newly installed drop.
4. Test each new drop and incorporate results into overall test results that will be provided in closeout deliverables.

**EXCLUSIONS:**

1. Hoisting or lifting.
2. Cutting or patching of concrete, masonry, brick, etc.
3. Cutting or patching of sheetrock, plaster, etc.
4. Painting or priming of any kind.
5. Overtime, expediting fees.
6. Plywood Backboards
7. Man Lifts.
8. Floor Cores/Sleeves.
9. Fire stopping sleeves/conduits.

**CLARIFICATIONS:**

1. Pricing is valid for 15 days from date of this change proposal
2. Titus Systems reserves the right to withdraw this proposal upon discovery of information that may alter this proposal's scope and final amount.

If you have any questions regarding this proposal please contact me at (737) 215-1644.

Sincerely,  
Titus Systems, LLC.

Brian Elliott  
Project Manager

**REQUEST FOR CHANGE**

Client Address:

**Vaughn Construction**  
3171 SE Inner Loop  
Georgetown, TX 78626

**RFC #** 001  
**RFC Date** 2/27/2018  
**Project Name:** Wilco North Campus Facilities  
**Project Number:**  
**Page Number:** 2

---

**Itemized Breakdown**

---

Description	Qty	Net Price U	Total Mat.	Labor U	Total Hrs.
CAT6 UTP PLENUM	4,380	0.35 E	1,533.00	5.00 M	21.90
CAT6 JACK	48	5.14 E	246.72	0.20 E	9.60
LABEL - PORT	48	0.10 E	4.80	3.00 C	1.44
LABEL - CABLE	48	0.10 E	4.80	3.00 C	1.44
CABLE TEST (4-PAIR) DATA	24	0.10 E	2.40	0.20 E	4.80
<b>Totals</b>	<b>4,548</b>		<b>1,791.72</b>		<b>39.18</b>

---

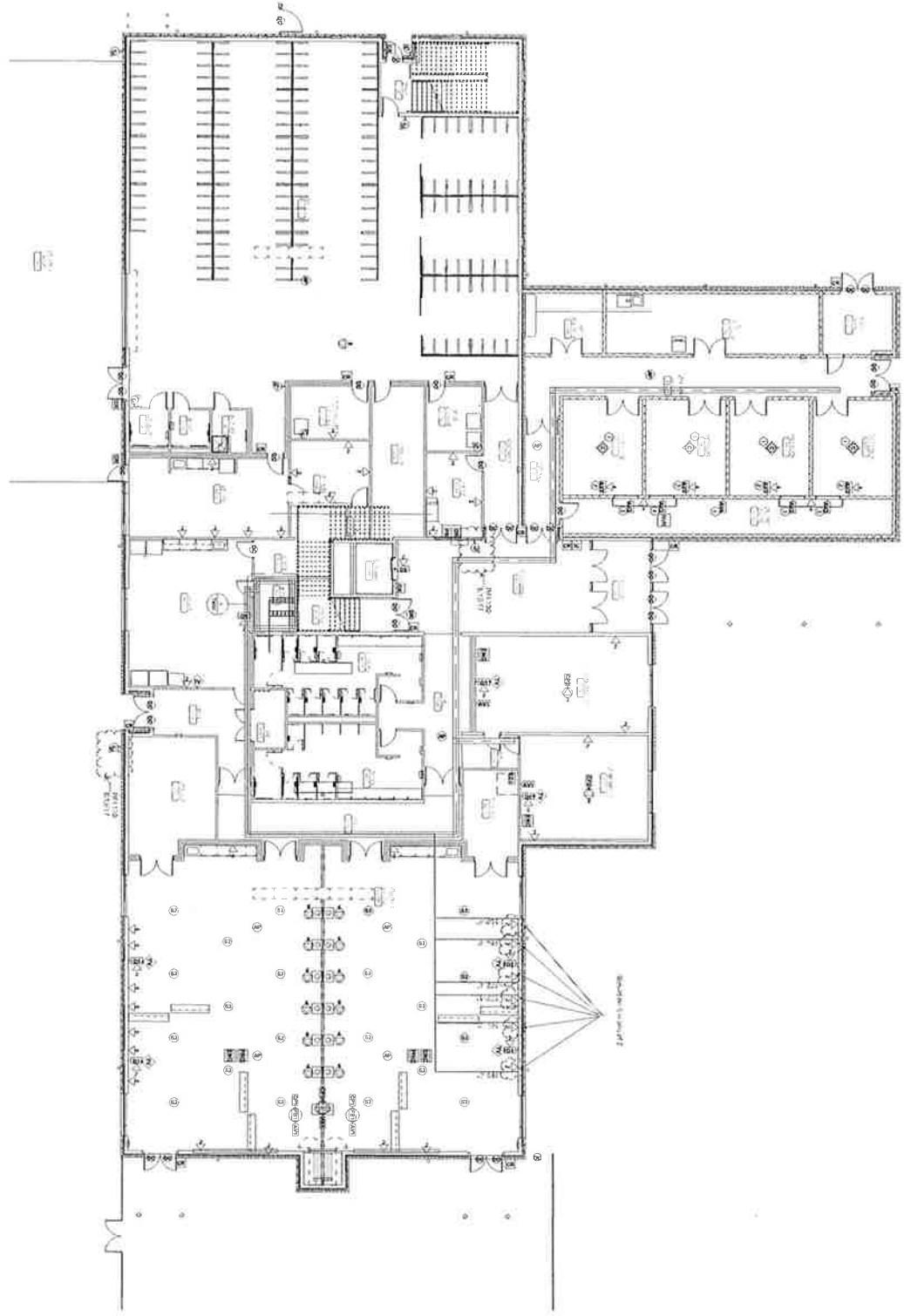
**Summary**

---

**MATERIAL**

<b>Total Material</b>					<b>1,791.72</b>
Direct Labor				1,611.47	
Indirect Labor				170.00	
<b>Total Labor</b>					<b>1,781.47</b>
General Expenses					64.46
<b>Subtotal</b>					<b>3,637.65</b>
Overhead (@ 15.000 %)				545.65	
Markup (@ 5.000 %)				209.17	
<b>Subtotal</b>					<b>4,392.47</b>
Final Adjustment					-0.47
<b>Final Amount</b>					<b>\$4,392.00</b>

2 Technology - Left Side Floor Plan



**TECHNOLOGY - NETWORKS**

1. NETWORK CABLES SHALL BE INSTALLED TO THE MAIN OFFICE OF EACH BUILDING FROM THE COMMUNICATIONS CENTER (C-CENTRAL SERVER) THROUGH THE NETWORK RACKS TO EACH OFFICE. THE NETWORK CABLES SHALL BE INSTALLED TO EACH OFFICE THROUGH THE NETWORK RACKS TO EACH OFFICE. THE NETWORK CABLES SHALL BE INSTALLED TO EACH OFFICE THROUGH THE NETWORK RACKS TO EACH OFFICE.

2. NETWORK CABLES SHALL BE INSTALLED TO EACH OFFICE THROUGH THE NETWORK RACKS TO EACH OFFICE. THE NETWORK CABLES SHALL BE INSTALLED TO EACH OFFICE THROUGH THE NETWORK RACKS TO EACH OFFICE.

3. NETWORK CABLES SHALL BE INSTALLED TO EACH OFFICE THROUGH THE NETWORK RACKS TO EACH OFFICE. THE NETWORK CABLES SHALL BE INSTALLED TO EACH OFFICE THROUGH THE NETWORK RACKS TO EACH OFFICE.

4. NETWORK CABLES SHALL BE INSTALLED TO EACH OFFICE THROUGH THE NETWORK RACKS TO EACH OFFICE. THE NETWORK CABLES SHALL BE INSTALLED TO EACH OFFICE THROUGH THE NETWORK RACKS TO EACH OFFICE.

100% CD

**TECHNOLOGY - NET**  
**WORKING DRAWING**

PROJECT NO. 2106  
 SHEET NO. 07/01/01  
 DATE: 07/01/01

**NORTH CAMPUS FACILITY**  
**WILLIAMSON COUNTY**  
**3151 SE INNER LOOP**

**TECHNOLOGY & SECURITY**

1. NETWORK CABLES SHALL BE INSTALLED TO EACH OFFICE THROUGH THE NETWORK RACKS TO EACH OFFICE. THE NETWORK CABLES SHALL BE INSTALLED TO EACH OFFICE THROUGH THE NETWORK RACKS TO EACH OFFICE.

2. NETWORK CABLES SHALL BE INSTALLED TO EACH OFFICE THROUGH THE NETWORK RACKS TO EACH OFFICE. THE NETWORK CABLES SHALL BE INSTALLED TO EACH OFFICE THROUGH THE NETWORK RACKS TO EACH OFFICE.

3. NETWORK CABLES SHALL BE INSTALLED TO EACH OFFICE THROUGH THE NETWORK RACKS TO EACH OFFICE. THE NETWORK CABLES SHALL BE INSTALLED TO EACH OFFICE THROUGH THE NETWORK RACKS TO EACH OFFICE.

4. NETWORK CABLES SHALL BE INSTALLED TO EACH OFFICE THROUGH THE NETWORK RACKS TO EACH OFFICE. THE NETWORK CABLES SHALL BE INSTALLED TO EACH OFFICE THROUGH THE NETWORK RACKS TO EACH OFFICE.

**ARCHITECTURE**

1. NETWORK CABLES SHALL BE INSTALLED TO EACH OFFICE THROUGH THE NETWORK RACKS TO EACH OFFICE. THE NETWORK CABLES SHALL BE INSTALLED TO EACH OFFICE THROUGH THE NETWORK RACKS TO EACH OFFICE.

2. NETWORK CABLES SHALL BE INSTALLED TO EACH OFFICE THROUGH THE NETWORK RACKS TO EACH OFFICE. THE NETWORK CABLES SHALL BE INSTALLED TO EACH OFFICE THROUGH THE NETWORK RACKS TO EACH OFFICE.

3. NETWORK CABLES SHALL BE INSTALLED TO EACH OFFICE THROUGH THE NETWORK RACKS TO EACH OFFICE. THE NETWORK CABLES SHALL BE INSTALLED TO EACH OFFICE THROUGH THE NETWORK RACKS TO EACH OFFICE.

4. NETWORK CABLES SHALL BE INSTALLED TO EACH OFFICE THROUGH THE NETWORK RACKS TO EACH OFFICE. THE NETWORK CABLES SHALL BE INSTALLED TO EACH OFFICE THROUGH THE NETWORK RACKS TO EACH OFFICE.