



Trimbuilt Construction, Inc.
On time. Every time.

P. O. Box 80169
Austin, TX 78708-0169
(512) 832-1979

Change Request

To: Williamson County
710 Main St.
Georgetown, TX 78626

Number: 25
Date: 5/22/2018
Project: Wilco WCCHD Office Renovations
Job #: 6148E

PH: (512) 943-1599 Fax: (512) 930-3313

Description: Exterior Renovations

We are pleased to offer the following specifications and pricing to make the following changes:

Exterior improvements based upon the report compiled by Hollan+Cannon Group on March 13, 2018 with further instruction and coordination with the project architect.

Waterproofing contractor to cut out and remove existing joint sealant from exterior window frames. Prep and install Dow Corning 795 silicone joint sealant with backer rod at perimeter of exterior window frames to cement siding. Open an clogged existing window frame weep holes. Wet seal the exterior window frames to glass (over existing gaskets) and at metal frame butt joints with Dow Corning 795 silicone sealant. Install 26 gauge pipe flashing covers at 5 locations where condensate lines enter the exterior of the building.

Remove plants and other debris from the exterior walls. Replace broken wood trim pieces at entry columns.

Treat nails that are backing out of the existing siding. Replace those that have backed out with oversized screws. For nails that have come loose but would cause more damage to dig out, hammer them back into place.

Use Tremco Dymonic 100 joint sealant in lieu of standard caulk to seal larger cracks and joints on the exterior façade. Apply Tremgard HB fiber reinforced elastomeric wall coating to the exterior of the building. Includes painting the gutters and downspouts to match.

All lifts and equipment are included. Work is figured as regular business hours except paint which will be done after hours to avoid overspray on cars. Sections of the parking next to the building are to be blocked off while work is being done and must be avoided by non-construction personnel for safety. Only work stated in this proposal is included. As stated by the water proofing consultant's report, we cannot guarantee this will solve the building's current water infiltration issues and this work as applied to the existing exterior will result in continued maintenance at the building owner's responsibility. Material and mobilization is currently 3-4 weeks upon final approval of this proposal. Expected project duration is 4 weeks without weather of unforeseen delays.

Description:	Price
Drywall Acoustical Demo	3,300.00
Painting	50,758.00
Final Cleanup	750.00
Trash Dumpster	510.00
Landscaping Irrigation	1,400.00
General Cleaning	400.00
Supervision	3,600.00
Project Management	2,400.00
waterproofing	22,104.00
Temporary Facilities	140.00
Insurance	621.59
Profit / Fee	8,598.36
Total:	94,581.95



Trimbuilt Construction, Inc.
On time. Every time.

P. O. Box 80169
Austin, TX 78708-0169
(512) 832-1979

Change Request

To: Williamson County
710 Main St.
Georgetown, TX 78626

Number: 25
Date: 5/22/2018
Project: Wilco WCCHD Office Renovations
Job #: 6148E

PH: (512) 943-1599 Fax: (512) 930-3313

Description: Exterior Renovations

We are pleased to offer the following specifications and pricing to make the following changes:

Exterior improvements based upon the report compiled by Hollan+Cannon Group on March 13, 2018 with further instruction and coordination with the project architect.

Waterproofing contractor to cut out and remove existing joint sealant from exterior window frames. Prep and install Dow Corning 795 silicone joint sealant with backer rod at perimeter of exterior window frames to cement siding. Open and clogged existing window frame weep holes. Wet seal the exterior window frames to glass (over existing gaskets) and at metal frame butt joints with Dow Corning 795 silicone sealant. Install 26 gauge pipe flashing covers at 5 locations where condensate lines enter the exterior of the building.

Remove plants and other debris from the exterior walls. Replace broken wood trim pieces at entry columns.

Treat nails that are backing out of the existing siding. Replace those that have backed out with oversized screws. For nails that have come loose but would cause more damage to dig out, hammer them back into place.

Use Tremco Dymonic 100 joint sealant in lieu of standard caulk to seal larger cracks and joints on the exterior façade. Apply Tremgard HB fiber reinforced elastomeric wall coating to the exterior of the building. Includes painting the gutters and downspouts to match.

All lifts and equipment are included. Work is figured as regular business hours except paint which will be done after hours to avoid overspray on cars. Sections of the parking next to the building are to be blocked off while work is being done and must be avoided by non-construction personnel for safety. Only work stated in this proposal is included. As stated by the water proofing consultant's report, we cannot guarantee this will solve the building's current water infiltration issues and this work as applied to the existing exterior will result in continued maintenance at the building owner's responsibility. Material and mobilization is currently 3-4 weeks upon final approval of this proposal. Expected project duration is 4 weeks without weather or unforeseen delays.

Description:	Price
--------------	-------

If you have any questions, please contact me at 512-832-1979.

Submitted by:
Trimbuilt Construction, Inc.

Approved By: _____

cc:

Date: _____

Kinseal, Inc.

Waterproofing / Joint Sealants / Firestopping

5/9/18

Re: Williamson County Health Dept. - 355 Texas Ave. Round Rock, Tx * Revised*

Kinseal, Inc. shall provide all labor, materials, tools, equipment, and insurance to complete the scope of work outlined below. Any alterations or deviations from the outlined scope of work involving extra cost will be executed only upon written orders, and will become an extra charge over and above the estimate.

Scope of Work:

1. Cut out and remove existing joint sealant from perimeters of exterior window frames to existing painted cement siding.
2. Install Dow Corning P Primer to cement siding to promote sealant adhesion at rough opening edge.
3. Install Dow Corning 795 a silicone joint sealant along with a closed cell soft type backer rod at perimeter of exterior window frames to cement siding.
4. Install Dow Corning 795 a silicone joint sealant as a wet seal from exterior window frames to glass and at metal to metal butt joints in aluminum window frames.
5. Install 26 gauge galvanized pipe flashing covers at 5 locations on exterior of building.

This proposal includes the rental of a 40' aerial boom lift. Exterior side of windows only.

For The Amount Of: \$22,104.00 Taxes not included
Proposal valid for 30 days

The above price does not include:

1. Tax
2. Overtime or after hours.
3. Sealants at siding joints, existing building sealants, interior sealants, penetrations, site sealants, sealants at louvers or hollow metal door frames and any sealant associated with the roof or roof flashing system.
4. Siding repair.
5. Paint removal if needed for sealant adhesion.
6. Any and all work not specified above.

If you have any questions regarding the above pricing, please contact me at Cell 512-844-6233

Sincerely


Rene Moreno

ACCEPTANCE OF PROPOSAL: THE ABOVE PRICES, SPECIFICATIONS ARE SATISFACTORY AND ARE ACCEPTED. YOU ARE AUTHORIZED TO DO WORK AS SPECIFIED. PAYMENT WILL BE MADE AS OUTLINED ABOVE.

P.O. Box 1430 / Pflugerville, Texas 78691 / Ph: (512)252-8461 / Fax: (512)252-9080



Change Order
Wilco
6148E

Date 5/15/18

To: Michael H

Amount

Nail in all loose nails (replace some with screws)	\$
Lift for 1 week	\$
Repair Hardie trim if I can match it	\$
Regular hours	\$
No caulking or paint	\$
	\$
	\$
	\$
	\$
TOTAL	\$ 3,300.00

If you have any questions, please contact me at (512) 832-1979.

Submitted by:
Trimbuilt Construction, Inc.

Quote expires in 90 days if not accepted, and is subject to escalation rates based on commencement date of project



May 16, 2018

re: Wilco WCCHD Exterior Paint

Job Duration: 2 Week

Proposal: Exterior Painting Services

Exterior finish paint
One coat
Regular time
Material and labor
After hours
Boom lift rental cost
Masking windows and doors to protect from overspray
Car covers to protect from overspray
TremGard HB *Fiber Reinforced, Elastomeric, Acrylic Wall Coating One coat*
Refinishing the cracks throughout the entire building
Dymonic 100 Polyurethane joint sealant

Material lead time: 3 weeks for the TremGard HB

TOTAL COST: \$50,758

INCLUSION NOTES AND CLAIRIFICATIONS:

- **Supervision, Project Management, Administration**
- **Scheduling**
- **Clean Up (to onsite dumpster provided by others)**
- **Insurance**

EXCLUSIONS NOTES (but not limited to):

- **Items NOT mentioned above are NOT included in this proposal.**
- **Painting above ACT, Two coats of TremGard HB**
- **Any Work Outside the Work Area**
- **Prevailing wages, taxes**
- **Door Frames, stucco repair or patching, metal and steel repairs**
- **Specifically Exclude:**
Power, Water, Port-a-John, Dumpster, Permits, Painting or Stenciling of Labels
Patching and Painting Behind Other Trades, Premium Time or Overtime.

Exterior Wall Assessment for
355 Texas Ave.
Round Rock, Texas

1.0 - PROCEDURES

On March 13, 2018, Hollon+Cannon Group personnel conducted a visual survey of the site. The following tasks were performed.

- Exterior walls and fenestrations were assessed with existing conditions verified and features recorded.
- Field notes were developed from visual observations.
- Photographs were taken of each wall-related feature.

2.0- OBSERVATIONS

Wall Area Square Footages:

North Elevation	=	3,012	sf
South Elevation	=	2,980	sf
East Elevation	=	2,980	sf
West Elevation	=	3,012	sf
Total	=	11,984	sf

Warranty Information:

None

Exterior Wall Sheathing:

1. Exterior wall surfacing is comprised of cementitious siding over reported gypsum wall board and wood framed wall construction. The existence of a weather barrier behind the cementitious siding was not verified.
 - a. Sheathing is butted to adjacent boards with trim flashing at the head and bottom of each panel.
 - b. Sheathing was observed with numerous cracks and open joints.
 - c. Various sheathing boards were observed damaged with corners missing
 - d. Sheathing is face nailed into wall framing behind. Nail heads were originally covered with plaster. Fasteners were observed backing out and proud of exterior sheathing at numerous locations. Plaster covering nail head has deteriorated at numerous locations exposing nail head.
2. Existing vegetation was observed protruding from various locations through the building. Growth no longer appears active. It is expected the growth is wide-spread behind the panel at numerous locations. Growth of this type compromises the weather barrier system.

Exterior Wall Recommendations:

Existing building construction type does not lend itself to the installation of cementitious siding with butt joints. Building movement has resulted in open siding joints and various levels of damaged panels.

Option 1:

Remove existing siding system to existing gypsum sheathing. Install a weather barrier, furring strips, and new siding system with lap or batten style joints. Numerous designs are available. Cost is highly dependent on the design of siding system.

Option 2:

Restoration of the existing siding will result in continued maintenance for the Owner but is a viable solution to limit water intrusion through the exterior wall assembly. Due to the existing construction it is anticipated that the current issues observed will continue to proliferate through the system as the building continues to move and age. Option 2 consists of replacement of damaged siding panels (panels where cracking or fracturing has isolated a portion of the panel from the main body / attachment points). Removal of all loose material / plaster. Proper surface preparation. Application of new sealant at joints / panel terminations. Application of breathable, reinforced wall coating (an example of acceptable product is attached to this report).

Coating will bridge minor cracking and accommodate minimal movement in the substrate, but it is expected board joints will continue to be an issue. Owner may consider additional protection at board to board joints in the form of an extruded silicone bridge (an example of acceptable product is attached to this report). The attached product will accommodate movement at joints and remain watertight long-term.

Exterior Wall Penetration:

1. Various recent penetrations through the exterior wall were observed associated with new mechanical up-grades and exterior unit replacement / installation. Insulated lines were observed entering the exterior wall assembly at numerous locations. Penetrations were observed sealed with expanding foam.

Exterior Wall Penetration Recommendations:

It is recommended to provide an additional sheet metal hood above each penetration location to limit exposure of penetration to wind blown rain and drainage sheeting down the wall surface. A detail of the recommended hood is attached to this report for your reference.

Windows:

1. Windows observed on-site consist of punched opening aluminum framed units with internal drainage design. Numerous previous repair attempts were observed and various windows. Multiple types of sealant were employed during the various repair attempts.
2. Previous sealant repair attempts have resulted in the blockage of the weep system at the base of multiple window units.
3. Windows appear to have been installed with the use of a sill flashing below the window unit. The use of sill flashing is highly recommended, but it appears the pan was damaged at multiple locations during the installation of the window unit. The pans were observed deformed and punctured at various locations where the window unit was set in the pan and slid into place.
4. Window glazing to frame connection was originally sealed with the use of neoprene gaskets. Gaskets were either not installed properly or have shrank as they aged. Gaps at corner connections were observed at majority of windows. Gaps may allow excess water into the window unit and overwhelm the weep system.
5. Multiple window units are missing mullion caps resulting in large voids and potential entry points for water into the window system.

Window Recommendations:

1. Remove sealant blocking window weep systems.
2. Repair window sill flashings.
3. Replace window gasketing. Option to wet glaze all windows.
4. Provide missing window frame components.

Recommendation Summary / Estimates:

Estimates are based visual information and past projects of similar scope. Owner is recommended to consult a Contractor for final budgeting.

Replace Exterior Wall Sheathing	12,000	sf	\$10.00	sf	\$ 120,000.00
Exterior Wall Restoration	12,000	sf	\$5.50	sf	\$ 66,000.00
Silicon bridge at siding joints	2,974	lf	\$2.50	lf	\$ 7,435.00
Hoods at insulated lines	5	ea	\$150.00	ea	\$ 750.00
Remove sealant blocking window weep systems			\$700.00	Lump sum	\$ 700.00
Repair window sill flashing			\$1,000.00	Lump sum	\$ 1,000.00
Replace window gaskets	870	lf	\$2.00	lf	\$ 1,740.00
Wet seal windows (Options)	1,000	lf	\$2.50	lf	\$ 2,500.00

PHOTOS ATTACHED



Photo No. 1
Example of damaged siding.

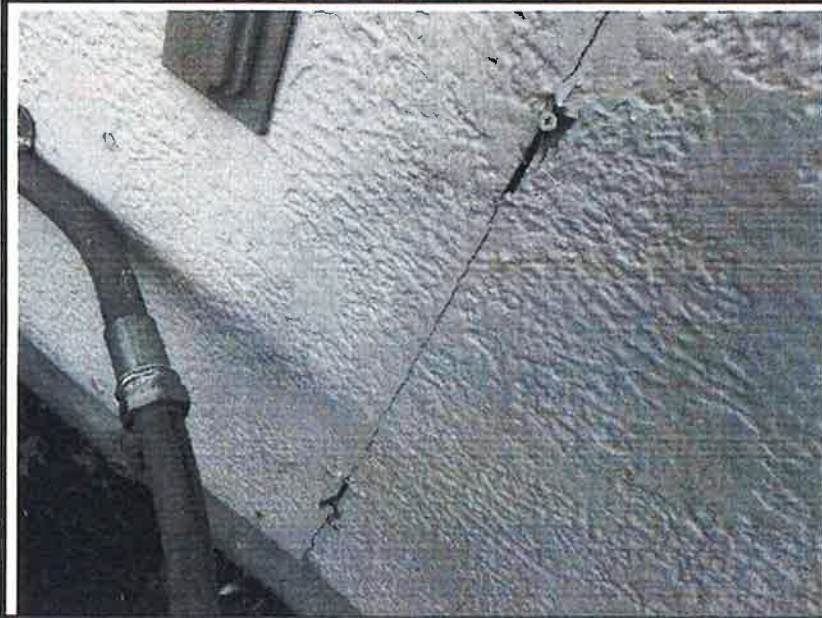


Photo No. 2
Example of damaged siding.



Photo No. 3
Example of open siding joint between panels
Example of cracked panels

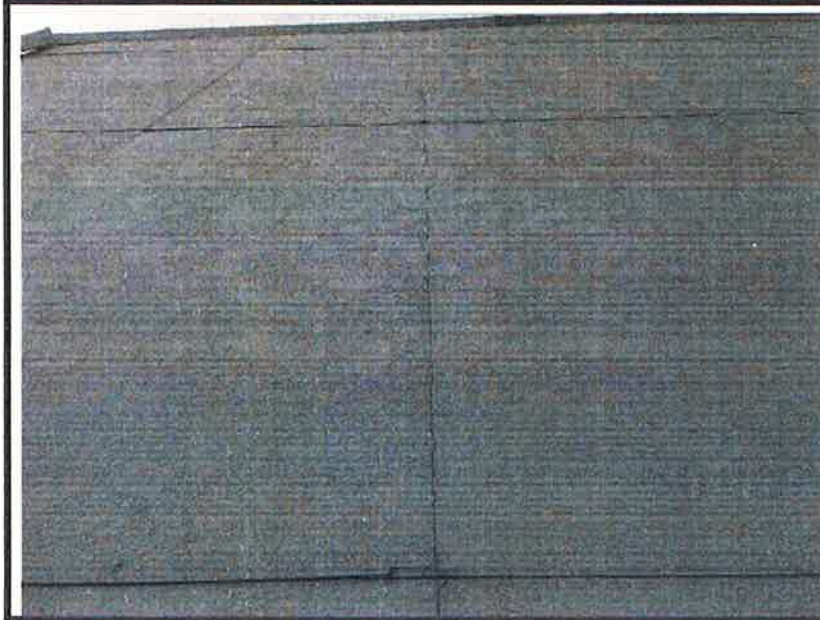


Photo No. 4
Example of open siding joint between panels

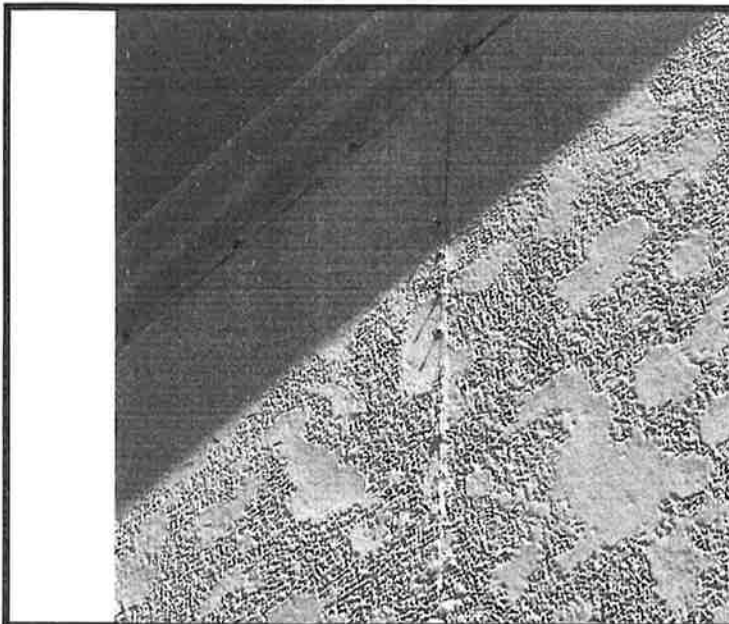


Photo No. 5
Example of fasteners backing out of siding

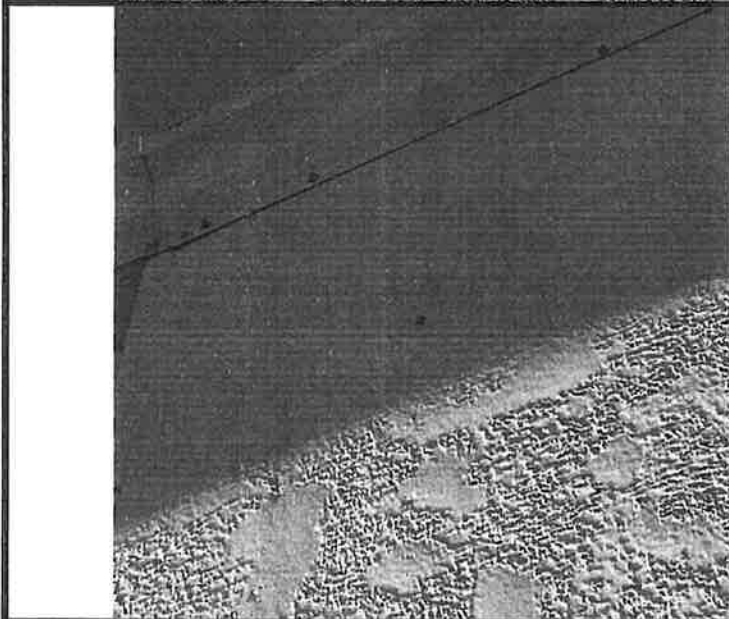


Photo No. 6
Example of fasteners backing out of siding

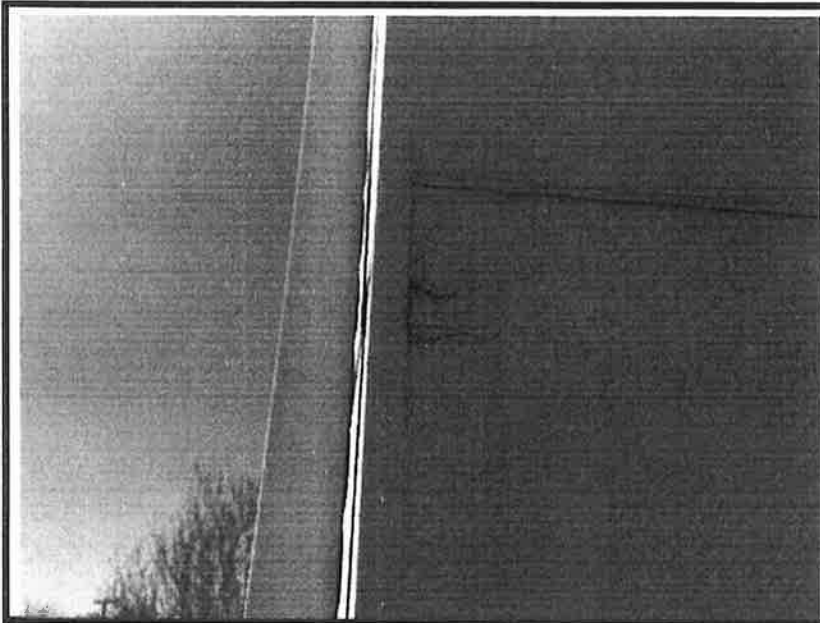


Photo No. 7
Example of organic growth behind panels

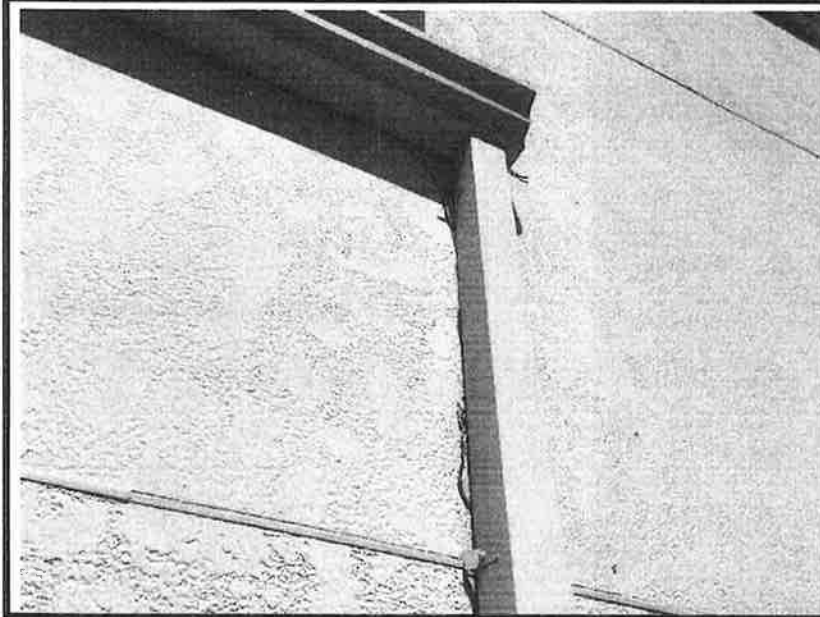


Photo No. 8
Example of organic growth behind panels

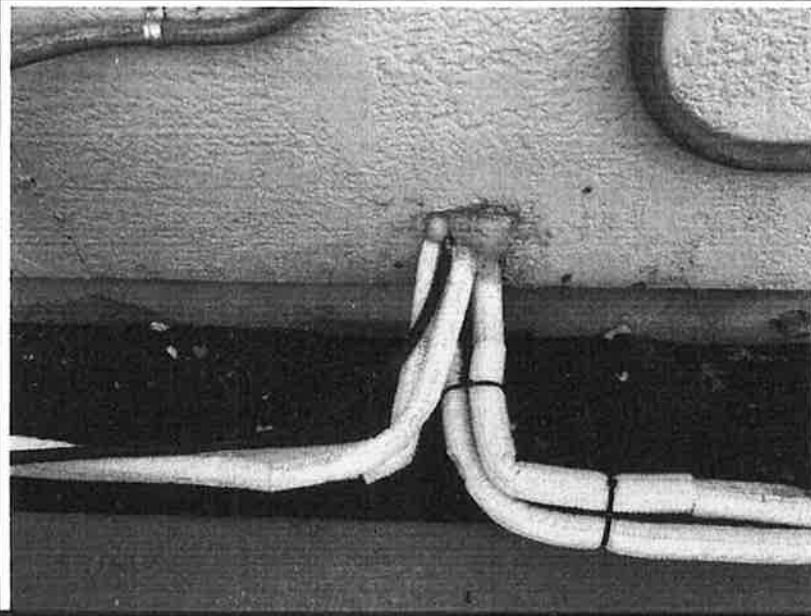


Photo No. 9
Example insulated lines penetrating wall surface

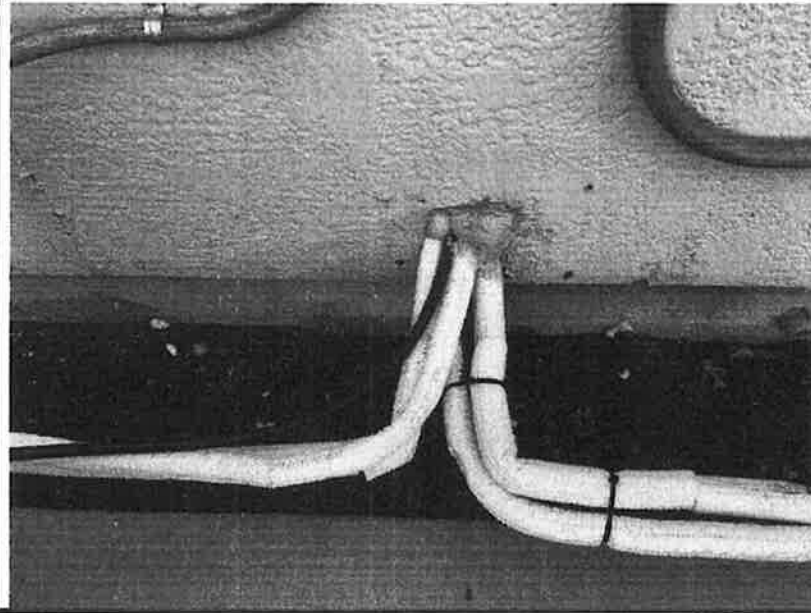


Photo No. 10
Example insulated lines penetrating wall surface

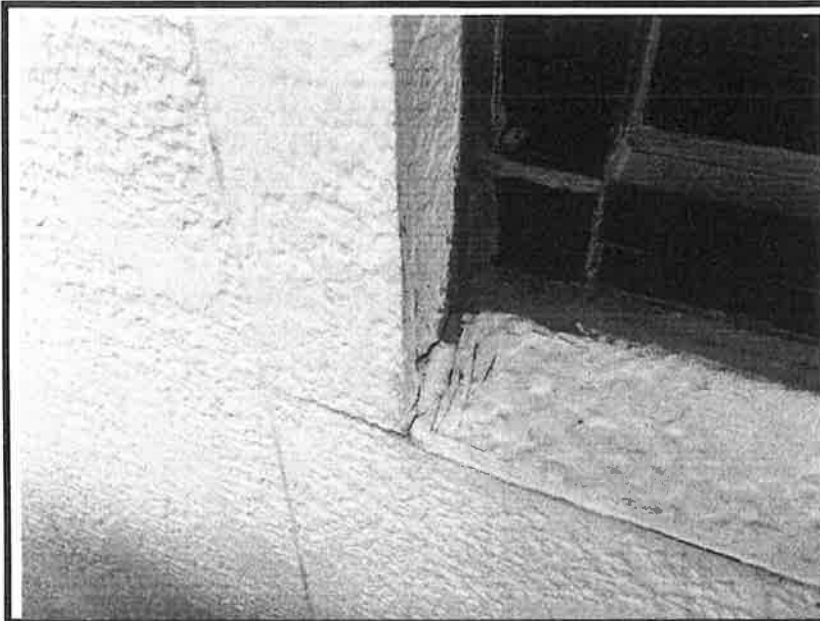


Photo No. 11
Example multiple sealant repairs at window. Sealant is blocking weep system of window unit

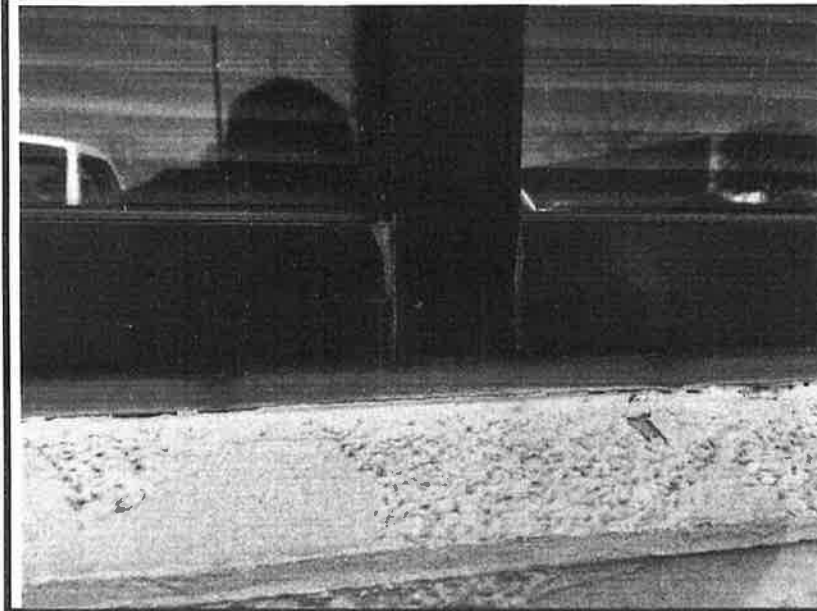


Photo No. 12
Example damaged window sill flashing

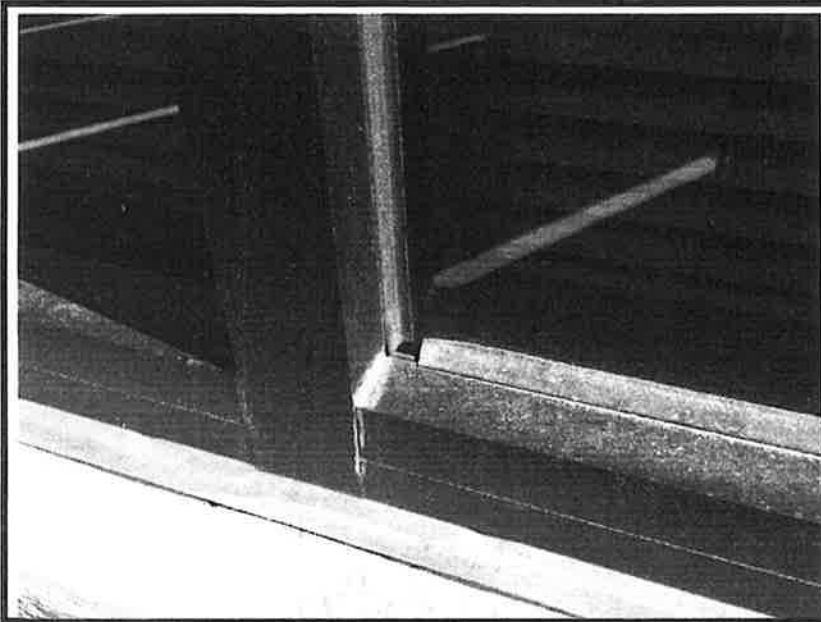


Photo No. 13
Example of gaps in window gaskets

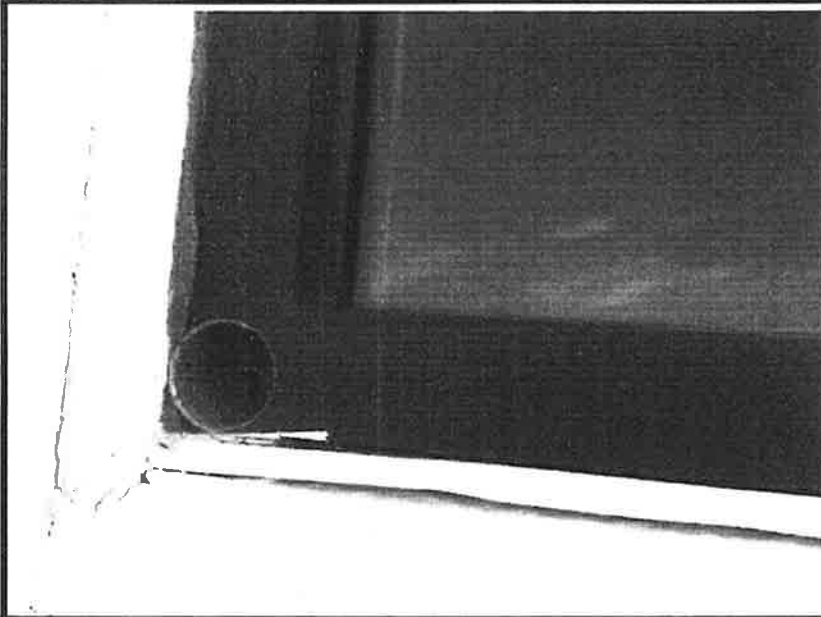


Photo No. 14
Example of gaps in window gaskets

END OF REPORT
(See Attachments)

Product Description

TREMGuard® HB is a high-build, fiber reinforced, water-based, acrylic wall coating formulated to provide a tough, durable, flexible, and breathable film protection for concrete and masonry surfaces. TREMGuard HB can be applied in a single coat up to 32 wet mils and can be used to bridge cracks.

Basic Uses

TREMGuard HB is ideal for:

- Exterior and interior above-grade substrates
- Concrete, cast-in-place or pre-cast
- Concrete masonry units (CMU)
- Previously painted masonry
- Brick
- Stone
- Exterior insulation finish systems (EIFS)
- Stucco
- Can be used on metal and PVC with TREMprime Non-Porous Primer

Features and Benefits

- Resists the effects of water and weather, making it an ideal coating for long-lasting waterproofing protection
- Fiber reinforced, which provides added strength and durability
- Bridges hairline cracks
- Breathable
- Supports a one-coat application
- Resists the growth of mold and fungus
- Resistant to wind driven rain
- Excellent adhesion
- VOC compliant @ <100 g/L

Availability

Contact your local Tremco Sales Representative or Tremco Customer Service for availability.

Coverage Rates

50-67 ft.2 /gal. (1.23-1.64m2 /L) / 24-32 mils

In special circumstances where 2 coats are required:

1st coat - 67 ft.2 /gal. (1.64m2 /L) / 24 mils

2nd coat - 67 ft.2 /gal. (1.64m2 /L) / 24 mils

Packaging

5 gal. (18.9L) pails

Colors

All TREMGuard HB colors are custom. Contact your local Tremco Sales Representative for more information.

Installation

Please refer to the Architectural Wall Coatings Application Instructions for installation details

Clean Up

Clean tools and application equipment immediately after use with soap and warm water. Clean overspray or drips while still wet with soap and warm water. Dried material may require solvents or mechanical abrasion for removal.

Storage

Store indoors, protected from moisture, at temperatures between 50°F and 90°F (10°C and 32°C) and out of direct sunlight.

Limitations

- Protect from freezing.
- Do not thin or dilute.
- Do not apply if rain is expected within 12 hours.
- Do not apply over frost-laden surfaces.
- Do not apply if surface or ambient temperatures are below 40° F (4° C) or are anticipated within 24 hours.
- Do not apply to non-porous materials such as glass, glazed brick or glazed tile.
- Not for use on traffic bearing surfaces.
- In all cases, consult the Material Safety Data Sheet before use.

Warranty

Tremco warrants its Products to be free of defects in materials but makes no warranty as to appearance or color. Since methods of application and on-site conditions are beyond our control and can affect performance, Tremco makes no other warranty, expressed or implied, including warranties of MERCHANTABILITY and FITNESS FOR A PARTICULAR PURPOSE with respect to Tremco Products. Tremco's sole obligation shall be, at its option, to replace or to refund the purchase price of the quantity of Tremco Products proven to be defective, and Tremco shall not be liable for any loss or damage.

Please refer to our website at www.tremcosealants.com for the most up-to-date Product Data Sheets.

NOTE: All Tremco Safety Data Sheets (SDS) are in alignment with the Globally Harmonized System of Classification and Labelling of Chemicals (GHS) requirements.

TYPICAL PHYSICAL PROPERTIES

PROPERTY	TEST METHOD	TREMGARD HB
Density lb/gal (kg/m)	ASTM D1475	11.0 ± 2.0 lb. (5.0 ± 0.9 kg)
Regulatory VOC	Method 310	21 g/L
Viscosity	ASTM D562	85-141 KU
Solids by Weight	ASTM D1644	83% ± 1%
Solids by Volume	ASTM D2697	52% ± 1%
Accelerated Weathering (1000 hr.)	ASTM D4798	No cracking or checking
Permeance Rating (Wet Cup)	ASTM D1653	12 perms
Tear Resistance	ASTM D624	120-140 lb/ln
Tensile Strength @ 77° F (25° C)	ASTM D2370	375 ± 50 psi
Elongation @ 77° F (25° C)	ASTM D2370	215% ± 25%
Low Temp. Flexibility after 1000 hr. accelerated weathering @ -15° F (-26° C) 1/2" Mandrel	ASTM D522	Passed
Fungus Resistance	ASTM G21	No Growth
Adhesion	ASTM C794/D903	Excellent

* Accelerated aging test. 1 daily cycle of UV and water spray greatly exceeds 1 day of real world exposure. Contact Tremco Technical services or your local sales representative for more information.

0317/TGHBDS-DC**Tremco Commercial Sealants & Waterproofing**

3735 Green Rd
Beachwood OH 44122
216.292.5000 / 800.321.7906

1451 Jacobson Ave
Ashland OH 44805
419.289.2050 / 800.321.6357

220 Wicksteed Ave
Toronto ON M4H1G7
416.421.3300 / 800.363.3213

1445 Rue de Coulomb
Boucherville QC J4B 7L8
514.521.9555



Product Description

Spectrem® Simple Seal is an ultra-low modulus, preformed silicone extrusion specifically designed to have high elongation properties. Simple Seal is typically bonded with Spectrem 1 or Spectrem 2® Silicone Sealant to a wide range of substrates to provide a watertight seal.

Benefits of Spectrem® Simple Seal include:

- Cost effective alternative to cutting out existing failed sealant
- High flexibility and movement capability
- High tear resistance
- Ease of installation
- Color fast formulation
- Wide operational temperature range
- Non-corrosive and corrosion resistant
- Resistant to UV exposure and weathering
- Capable of sealing high movement joints
- Well suited for soft and sensitive substrates such as EIFS

Basic Uses

Tremco Spectrem Simple Seal is designed for both new construction and restoration work involving window perimeter, EIFS joints, parapet walls, skylights, aluminum window seals, transition seals, curtain wall joints, sheet metal roof joints, and other lap joints.

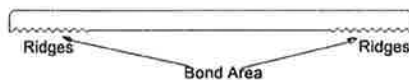
Packaging

Widths 9" (229 mm) and smaller are available in 100' (30.5 M) rolls.

Widths 10" (254 mm) and larger are available in 50' (15.2 M) rolls.

Standard Sizes

1", 1.5", 2" and 3", 4", and 6" (25, 38, 51, 76, 102 and 152 mm) widths. Standard thickness is 0.78" (2 mm).



Special Sizes

Other sizes available include 2-1/2" (64 mm), 5" (127 mm) and 7" (178 mm) to 14" (355 mm) in 1" (25 mm) increments.

Custom Sizes

Custom sizes and/or geometries are available upon request. Please contact your sales representative or Tremco Technical Services for assistance. Lead times and costs will vary based on the request.

Standard Colors

Aluminum Stone, Anodized Aluminum, Black, Bronze, Limestone, Sandstone, and White.

Special Colors

Buff, Champagne, Dark Bronze, Dusty Rose, Gray, Ivory, Light Bronze, Off White, Precast White, and Rustic Brick.

Custom Colors

Custom color matching is available. Please contact your sales representative or Customer Service representative for assistance. Lead times and costs will vary based on the request.

SWRI SEALANT · WATERPROOFING & RESTORATION INSTITUTE

Issued by: Tremco Incorporated
Product: Spectrem® Simple Seal

ASTM C 1523-10: Determining Modulus, Tear and Adhesion Properties of Pre-cured Elastomeric Joint Sealants

Movement, Cohesion & Adhesion: 200%

Dry/Room Temperature Loss of Adhesion/Cohesion Pass ✓

Water Immersion Loss of Adhesion/Cohesion Pass ✓

Frozen Loss of Adhesion/Cohesion Pass ✓

Heat Loss of Adhesion/Cohesion Pass ✓

Artificial Weathering Loss of Adhesion/Cohesion Pass ✓

Tear Propagation: PT/Knotty

ASTM D 412: Vulcanized Rubber and Thermoplastic Elastomers - Tension

Ultimate Elongation Results: 554%

Validation Date: 11/17/16 – 11/16/21

No. 1116-S1121 Copyright © 2017

PRE-CURED SEALANTS VALIDATION
www.swrionline.org

Limitations

Do not apply on damp or contaminated surfaces.

Do not use clear silicone sealant for the application of Spectrem Simple Seal.

Spectrem Simple Seal should not be used under the following conditions:

- Below grade or below water line applications
- Joints where physical abrasion and abuse may occur, such as traffic joints
- In association with building materials that release oils, plasticizers or other material

Surface Preparation

Surface must be sound, clean, and dry. Contact surfaces should be free of loose dirt, dust, oils, and any other contaminants. Tremco recommends that air temperatures be 40 °F (5 °C) or above before applying any sealant. If colder weather is imminent, please refer to the Tremco Guide for Cold Weather Applications at www.tremcosealants.com.

Masking

Apply masking tape to the substrate surface at the width edges of the Spectrem Simple Seal to provide a clean edge.

Application

Select the width of Spectrem Simple Seal wide enough so that the ridges are fully encapsulated by the sealant when installed over the joint. Apply Spectrem 1 or Spectrem 2® to each side of the joint with beads large enough to encapsulate the width of the ridges. Immediately embed the Spectrem Simple Seal into the wet sealant. Using a roller, apply consistent pressure to ensure uniform contact. Remove masking tape and any excess sealant.

Spectrem® Simple Seal
Extruded Silicone Bridge

Detailed application instructions are available from Tremco Technical Services or www.tremcosealants.com.

Availability

Availability and cost may be obtained from your local Tremco Field Representative, or by contacting our Customer Service Department in Beachwood, Ohio at 800-321-7906, or Toronto at 800-363-3213.

Maintenance

Damaged Spectrem Simple Seal can be repaired. Contact your local Tremco Sales Representative or Tremco Technical Services for repair procedures.

Warranty

Tremco warrants its Products to be free of defects in materials, but makes no warranty as to appearance or color. Since methods of application and on-site

conditions are beyond our control and can affect performance, Tremco makes no other warranty, expressed or implied including warranties of MERCHANTABILITY and FITNESS FOR A PARTICULAR PURPOSE, with respect to Tremco Products. Tremco's sole obligation shall be, at its option, to replace, or refund the purchase price of the quantity of Tremco Products proven to be defective and Tremco shall not be liable for any loss or damage.

Please refer to our website at www.tremcosealants.com for the most up-to-date Product Data Sheets.

NOTE: All Tremco Safety Data Sheets (SDS) are in alignment with the Globally Harmonized System of Classification and Labelling of Chemicals (GHS) requirements.

TYPICAL PHYSICAL PROPERTIES

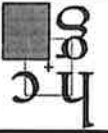
PROPERTY	TEST METHOD	TYPICAL RESULTS
Shore A hardness	ASTM D2240	29 to 32
Tensile strength	ASTM D412	218 psi
Elongation at break	ASTM D412	554%

TESTED IN ACCORDANCE WITH ASTM C1518

Specification for Procured Elastomeric Silicone Joint Sealants

PROPERTY	TEST METHOD	TYPICAL RESULTS
Tear propagation	ASTM C1523 9.4	Class PT (partial tear)
Movement Class	ASTM C1523 9.1	Class 200%
Heated conditions resistance	ASTM C1523 8.2.4	Pass (Class 200%)
UV resistance	ASTM C1523 8.2.5.1	Pass (Class 200%)
Frozen conditions resistance	ASTM C1518 8.2.3	Pass (Class 200%)

- Spectrem 1 is the recommended silicone sealant to be used; Spectrem 2 may be suitable for use, adhesion to the existing substrate must be confirmed. Contact Technical Services for a recommendation on the specific Spectrem Silicone Sealant to use for your application.

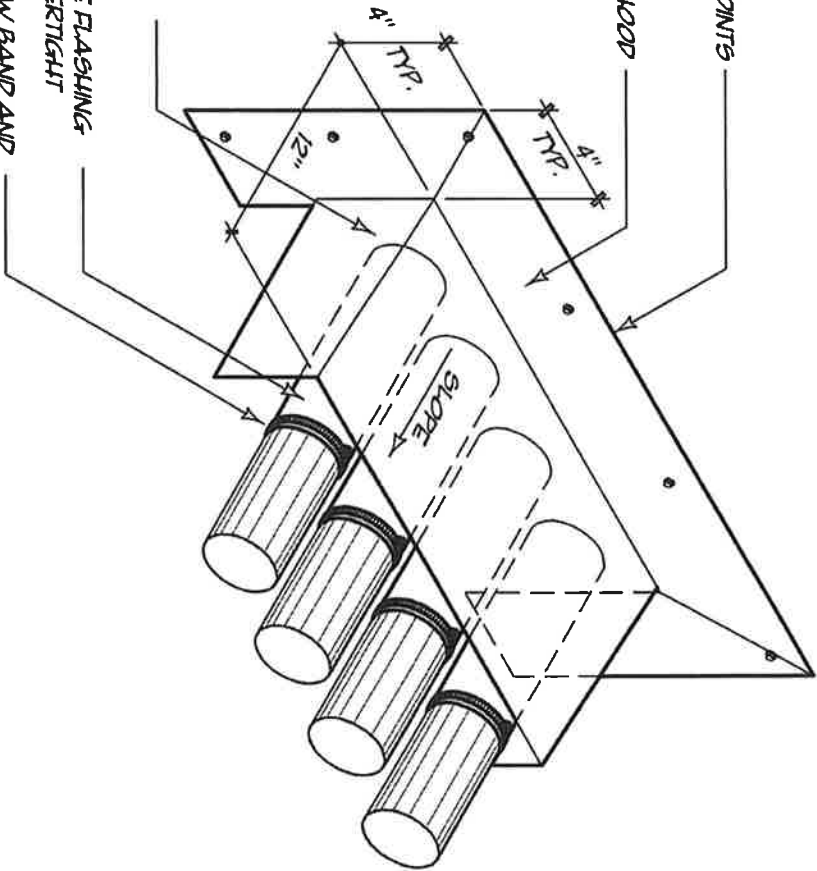


HOLLON+CANNON GROUP
 11407 Brashe Oak Trl
 Austin, Texas 78750
 ph: 512.300.0452
 www.hollon-cannon.com

355 TEXAS AVE.
 ROUND ROCK TEXAS

PIPE FLASHING
 Drawn by: CANNON, J. Date: 04/04/18
 Scale: AS NOTED Sheet: R1

CONT. SEALANT AT ALL JOINTS
 24 GA. GALV. MTL. RAIN HOOD
 SOLDER ALL JOINTS
 SOLDER PIPE SLEEVE TO GALV. MTL. BACK PLATE
 24 GA. GALV. METAL PIPE FLASHING
 SOLDER ALL JOINTS WATERIGHT
 SEAL W/ CLAMPING DRAIN BAND AND CONTINUOUS SEALANT BETWEEN PIPE AND METAL FLASHING



PIPE FLASHING THRU WALL PANELS

1
 R1
 3" = 1'-0"

FOR INTERIM REVIEW / PRELIMINARY PRICING ONLY

Not for regulatory approval, permitting, or construction

Architect: Thomas Pope

Texas License No. 16561

Date: 4/4/2018