

# **AIA® Document G701™ – 2017**

## Change Order

**PROJECT:** (Name and address)  
Williamson County  
Animal Shelter Expansion  
1855 SE Inner Loop  
Georgetown, TX 78626

**CONTRACT INFORMATION:**  
Contract For: General Construction

**CHANGE ORDER INFORMATION:**  
Change Order Number: 004

Date: 1/8/18

Date: 7/13/18

**OWNER:** (Name and address)  
Williamson County, Texas  
710 Main Street, Suite 101  
Georgetown, TX 78626

**ARCHITECT:** (Name and address)  
Jackson & Ryan Architects  
2370 Rice Boulevard, Suite 210  
Houston, TX 77005

**CONTRACTOR:** (Name and address)  
J.T. Vaughn Construction, LLC  
10355 Westpark Drive  
Houston, TX 77042

### THE CONTRACT IS CHANGED AS FOLLOWS:

(Insert a detailed description of the change and, if applicable, attach or reference specific exhibits. Also include agreed upon adjustments attributable to executed Construction Change Directives.)

Change Order No. 4 includes the below listed Vaughn Change Proposals # 18-#21. For Vaughn Project No. 2491-01.

- CP No. 18 - Provide Faucet in Surgery Prep Room 106 per RFI 61
- CP No. 19 - Provide Additional Concrete at New Transformer Pad
- CP No. 20 - Provide Additional Subgrade Prep and Concrete at Wilco Show Barn
- CP No. 21 - Provide Pipe Penetrations per RFI 63

The original Contract Sum was	\$ 9,499,295.00
The net change by previously authorized Change Orders	\$ 0.00
The Contract Sum prior to this Change Order was	\$ 9,499,295.00
The Contract Sum will be unchanged by this Change Order in the amount of	\$ 0.00
The new Contract Sum including this Change Order will be	\$ 9,499,295.00

The Contract Time will be unchanged by Zero (0) days.


The new date of Substantial Completion will be 3/6/19

**NOTE:** This Change Order does not include adjustments to the Contract Sum or Guaranteed Maximum Price, or the Contract Time, that have been authorized by Construction Change Directive until the cost and time have been agreed upon by both the Owner and Contractor, in which case a Change Order is executed to supersede the Construction Change Directive.

### NOT VALID UNTIL SIGNED BY THE ARCHITECT, CONTRACTOR AND OWNER.

Jackson & Ryan Architects

**ARCHITECT** (Firm name)



**SIGNATURE**

Martha Seng

**PRINTED NAME AND TITLE**

07/16/18

**DATE**

J.T. Vaughn Construction, LLC

**CONTRACTOR** (Firm name)



**SIGNATURE**

Mike Simpson


**PRINTED NAME AND TITLE**

7/16/18

**DATE**

Williamson County, Texas

**OWNER** (Firm name)



**SIGNATURE**

Dale Butler

**PRINTED NAME AND TITLE**

7/19/18

**DATE**

### Funds Tracking Log

Change Proposal No.	Change Type & No.	Time Extension (Days)		GMP Breakdown					GMP #2491.01	Total Updated Contract Amount
		Pending	Approved	Cost of Work	CM Contingency	Owner Contingency	General Conditions	Construction Phase Fee		
N/A	GMP	-	-	\$7,666,840	\$228,082	\$300,000	\$1,034,210	\$270,163	\$9,499,295	\$9,499,295
1	OCO 1	0	0	\$10,878	(\$10,964)	\$0	\$86	\$0	\$0	\$9,499,295
2	OCO 1	0	0	(\$8,139)	\$8,139	\$0	\$0	\$0	\$0	\$9,499,295
3	OCO 1	0	0	(\$3,945)	\$3,924	\$0	\$21	\$0	\$0	\$9,499,295
4	OCO 1	0	0	\$412	(\$412)	\$0	\$0	\$0	\$0	\$9,499,295
5	OCO 1	0	0	\$11,089	\$0	(\$11,615)	\$143	\$383	\$0	\$9,499,295
OCO 1 Totals		0	0	\$10,295	\$687	(\$11,615)	\$250	\$383	\$0	\$9,499,295
6	OCO 2	0	0	\$1,423	\$0	(\$1,491)	\$18	\$50	\$0	\$9,499,295
7	OCO 2	0	0	\$769	\$0	(\$806)	\$10	\$27	\$0	\$9,499,295
8	OCO 2	0	0	\$3,595	(\$3,640)	\$0	\$45	\$0	\$0	\$9,499,295
9	OCO 2	0	0	\$16,917	(\$17,128)	\$0	\$211	\$0	\$0	\$9,499,295
10	OCO 2	0	0	(\$9,016)	\$9,016	\$0	\$0	\$0	\$0	\$9,499,295
OCO 2 Totals		0	0	\$13,688	(\$11,752)	(\$2,297)	\$284	\$77	\$0	\$9,499,295
11	OCO 3	0	0	\$5,028	\$0	(\$5,201)	\$0	\$173	\$0	\$9,499,295
12	OCO 3	0	0	\$15,199	\$0	(\$15,912)	\$189	\$524	\$0	\$9,499,295
13	OCO 3	0	0	\$825	\$0	(\$853)	\$0	\$28	\$0	\$9,499,295
14	OCO 3	0	0	\$726	\$0	(\$751)	\$0	\$25	\$0	\$9,499,295
15	OCO 3	0	0	\$1,278	(\$1,294)	\$0	\$16	\$0	\$0	\$9,499,295
16	OCO 3	0	0	\$5,085	\$0	(\$5,324)	\$64	\$175	\$0	\$9,499,295
17	OCO 3	0	0	\$4,752	\$0	(\$4,975)	\$59	\$164	\$0	\$9,499,295
OCO 3 Totals		0	0	\$32,893	(\$1,294)	(\$33,016)	\$328	\$1,089	\$0	\$9,499,295
18	OCO 4	0	0	\$225	\$0	(\$233)	\$0	\$8	\$0	\$9,499,295
19	OCO 4	0	0	\$1,037	(\$1,050)	\$0	\$13	\$0	\$0	\$9,499,295
20	OCO 4	0	0	\$9,202	\$0	(\$9,634)	\$115	\$317	\$0	\$9,499,295
21	OCO 4	0	0	\$90	\$0	(\$93)	\$0	\$3	\$0	\$9,499,295
OCO 4 Totals		0	0	\$10,554	(\$1,050)	(\$9,960)	\$128	\$328	\$0	\$9,499,295
23								\$0	\$0	\$9,499,295
24								\$0	\$0	\$9,499,295
25								\$0	\$0	\$9,499,295
26								\$0	\$0	\$9,499,295
27								\$0	\$0	\$9,499,295
28								\$0	\$0	\$9,499,295
29								\$0	\$0	\$9,499,295
30								\$0	\$0	\$9,499,295
31								\$0	\$0	\$9,499,295
32								\$0	\$0	\$9,499,295
33								\$0	\$0	\$21,530,927
34								\$0	\$0	\$9,499,295
35								\$0	\$0	\$9,499,295
36								\$0	\$0	\$9,499,295
37								\$0	\$0	\$9,499,295
38								\$0	\$0	\$9,499,295
39								\$0	\$0	\$9,499,295
40								\$0	\$0	\$9,499,295
Current Amounts		0	0	\$7,734,270	\$214,673	\$243,112	\$1,035,200	\$272,040	\$9,499,295	\$9,499,295



18551 SE Inner Loop  
Georgetown, TX  
78626

T: (210) 328-0193

July 12, 2018

John Benham  
Jackson & Ryan Architects  
2370 Rice Boulevard, Suite 210  
Houston, TX 77005

Re: Animal Shelter Expansion

Job No: 249101

Subj: Change Proposal No. 249101-0018

Dear Sir or Madam:

We respectfully submit our proposal for an increase to our contract in the amount of \$0 (zero) dollars to provide the faucet in surgery prep room 106 per RFI 61 for the above referenced project.

Our price is valid for Ten (10) days

Please indicate your acceptance of this change proposal by signing and returning one copy of the attached Form B breakdown of our cost.

Very truly yours,  
VAUGHN CONSTRUCTION

Thomas Morrill

A handwritten signature in blue ink, appearing to read "Tom Morrill", written in a cursive style.

Attachments:

CC:

# FORM B

PROJECT: Animal Shelter Expansion

CHANGE PROPOSAL NO: 249101-0018

QUOTATION :

Item	Labor	Materials	Subs	Total
For adding a faucet in surgery prep room 106 per RFI 61	\$0.00	\$0.00	\$225.00	\$225.00
CM Fee	\$0.00	\$8.00	\$0.00	\$8.00
To be funded by owners contingency	\$0.00	\$(233.00)	\$0.00	\$(233.00)

<b>Totals</b>	\$0.00	\$(225.00)	\$225.00	\$0.00
---------------	--------	------------	----------	--------

<b>Insurance, Tax, Benefits on Labor</b>	\$0.00
--	--------

<b>Overhead</b>	\$0.00
-----------------	--------

<b>Fee on Subs</b>	\$0.00
--------------------	--------

<b>Fee on JTV</b>	\$0.00
-------------------	--------

<b>Bond</b>	\$0.00
-------------	--------

<b>Remodel Tax</b>	\$0.00
--------------------	--------

<b>TOTAL</b>	<b>\$0.00</b>
--------------	---------------


TIME EXTENSION TO CONTRACT: 0 Days

Submitted Date: 7/12/2018

Accepted

VAUGHN CONSTRUCTION

By: \_\_\_\_\_

By:   
Thomas Morrill

Date \_\_\_\_\_

Proposal Valid for 10 Days

# REQUEST FOR INFORMATION



18551 SE Inner Loop  
Georgetown, TX  
78626

T: (210) 328-0193

**RFI NO:** 61

**To:** John Benham  
Jackson & Ryan Architects  
2370 Rice Boulevard, Suite 210  
Houston, TX 77005  
Phone: (713) 526-5436  
Fax:

**From:** Rodney Wilson

**Date:** 06/19/2018

**Required By:** 06/26/2018

**Owner:** Williamson County, Texas

**Job No :** 249101

**Project:** Animal Shelter Expansion  
1855 SE Inner Loop  
Georgetown, TX 78626

**Re:** Faucet Type for Room 106

**Spec. Section:**

**Drawing Number:** A.1-7.01, P.1-3.01

**Other Reference:**

**Question:**

Per Architect drawing for room 106 shows stainless counter top going in but per plumbing drawings it doesn't show faucet type for the room.

---

**Proposed Answer:**

Please provide faucet type for room 106

---

**Answer:**

Prepare the new stainless steel countertop for room 106 for sink fixture 'SK-1,' to align generally with the existing tie-in location. See the 'SK-1' Product Data from reviewed submittal 224000-1-1, dated 04/11/18, attached for immediate reference.

John Benham, AIA

Jackson & Ryan Architects

06/20/18

---

Very truly yours,

**VAUGHN CONSTRUCTION**

**Attachments:**

**CC:**

**Section:**  
**SK-1 ELKAY**

**List of Section Document Names:**



- **ELKAY LUSTERTONE STAINLESS STEEL 25" X 22" X 10-3/8" SINGLE BOWL TOP**
- **MOUNT SINK, MODEL(S) LR2522**
- **MECHANICAL SINK FAUCETS, 786-GN8AE35ABCP**
- **QUARTER-TURN BRASS BALL VALVE LAVATORY SUPPLY, LFBV2165**
- **CAST BODY P-TRAP WITH OR WITHOUT CLEANOUT, 8872CBECO, C8872CECO, 8904CBECO 8912CBECO, C8912CECO, 8912CNCBECO, 8912C18BECO**
- **102EZ INSULATION KIT SUBMITTAL**
- **SINK ACCESSORIES DRAIN FITTING, MODEL LK99**

## PRODUCT SPECIFICATIONS

Elkay Lustertone Stainless Steel 25" x 22" x 10-3/8", Single Bowl Top Mount Sink. Sink is manufactured from 18 gauge 304 Stainless Steel with a Lustertone finish, Center drain placement, and Sides and Bottom pads.

Installation Type:	Top Mount
Material:	304 Stainless Steel
Finish:	Lustertone
Gauge:	18
Sound Deadening:	Sides and Bottom pads
Number of Bowls:	1
Sink Dimensions:	25" x 22" x 10-3/8"
Bowl 1 Dimensions:	21" x 15-3/4" x 10"
Drain Size:	3-1/2" (89mm)
Drain Location:	Center
Minimum Cabinet Size:	30"
Mounting Hardware:	Part # 64090012 included for countertops up to 3/4" (19mm) thick
Cutout Template #:	1000001188

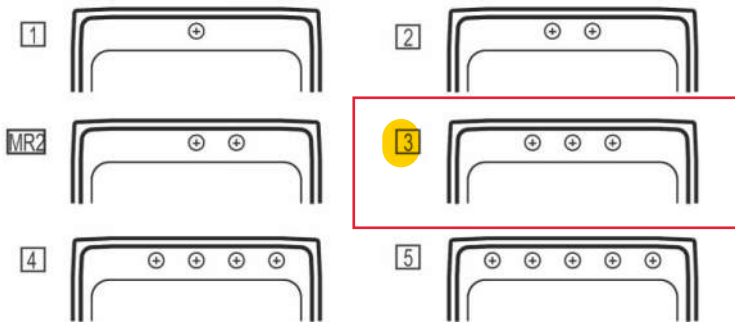
Template is available for download at [elkay.com](http://elkay.com)

### Cutout Dimensions for Top Mount Installation:

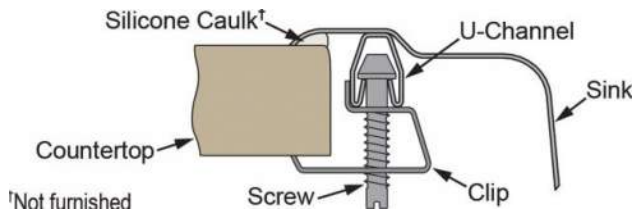
24-3/8" x 21-3/8" (619mm x 543mm) with 1-1/2" (38mm) corner radius

### Hole Drilling Configurations:

1-1/2" (38mm) Diameter Faucet Holes on 4" (102mm) Centers



### Installation Profile:



PART: \_\_\_\_\_ QTY: \_\_\_\_\_  
 PROJECT: \_\_\_\_\_  
 CONTACT: \_\_\_\_\_  
 DATE: \_\_\_\_\_  
 NOTES: \_\_\_\_\_  
 APPROVAL: \_\_\_\_\_



### AMERICAN PRIDE. A LIFETIME TRADITION.

Like your family, the Elkay family has values and traditions that endure. For almost a century, Elkay has been a family-owned and operated company, providing thousands of jobs that support our families and communities.



Sinks are listed by IAPMO® as meeting the applicable requirements of the Uniform Plumbing Code®, International Plumbing Code®, and National Plumbing Code of Canada.

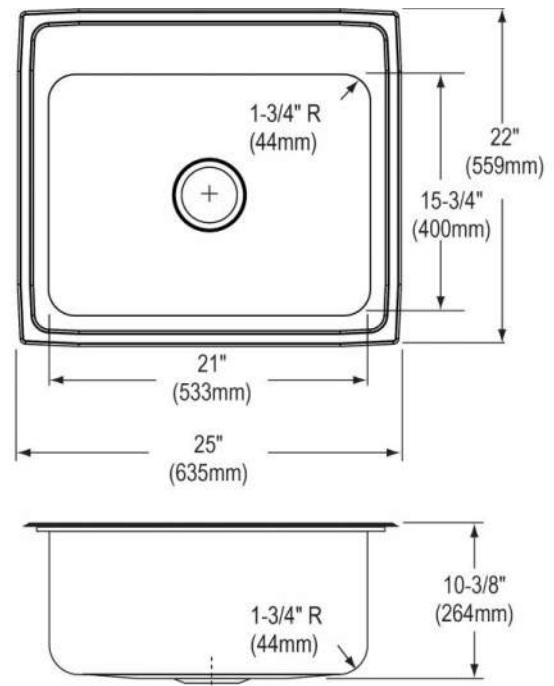
**Product Compliance:** ASME A112.19.3/CSA B45.4  
 BUY AMERICAN ACT

[Clean and Care Manual \(PDF\)](#)

[Installation Instructions \(PDF\)](#)

[Limited Lifetime Warranty \(PDF\)](#)

**Similar models are available with:** Perfect Drain



In keeping with our policy of continuing product improvement, Elkay reserves the right to change product specifications without notice. Please visit [elkay.com](http://elkay.com) for the most current version of Elkay product specification sheets. This specification describes an Elkay product with design, quality, and functional benefits to the user. When making a comparison of other producers' offerings, be certain these features are not overlooked.

**OPTIONAL ACCESSORIES**

<b>Bottom Grid:</b>	LKWBG2115SS
<b>Cutting Board:</b>	CB1516
<b>Drain:</b>	LK99
<b>Faucet:</b>	LKGT1041, LKGT2041
<b>Hardware:</b>	LK364, LK463
<b>Rinsing Basket:</b>	LKWRB2115SS, LKWERBSS
<b>Sinkmate:</b>	LKSMHSL
<b>Soap Dispenser:</b>	LKGT1054

*In keeping with our policy of continuing product improvement, Elkay reserves the right to change product specifications without notice. Please visit [elkay.com](http://elkay.com) for the most current version of Elkay product specification sheets. This specification describes an Elkay product with design, quality, and functional benefits to the user. When making a comparison of other producers' offerings, be certain these features are not overlooked.*



# MECHANICAL FAUCETS

## 786-GN8AE35ABCP

### Manual Faucets



#### Product Type

Deck Mounted 8" Fixed Centers Concealed Hot and Cold Water Sink Faucet

#### Features & Specifications

- 8" Fixed Centers
- 8" Rigid / Swing Gooseneck Spout
- 1.5 GPM (5.7 L/min) Aerator
- 4" Vandal Proof Wristblade Handle
- Quatern Compression Operating Cartridge
- 1/2" NPSM Supply Inlets and Coupling Nut for 3/8" or 1/2" Flexible Riser
- ECAST® design provides durable construction with total lead content equal to or less than 0.25% by weighted average
- CFNow! Item Ships in 3 Days

#### Performance Specification

- Rated Operating Pressure: 20-125 PSI
- Rated Operating Temperature: 40-140°F

#### Warranty

- Lifetime Limited Faucet Warranty
- 5-Year Limited Cartridge Warranty
- 1-Year Limited Finish Warranty

#### Codes & Standards

- ASME A112.18.1/CSA B125.1
- Certified to NSF/ANSI 61, Section 9 by CSA
- California Health and Safety Code 116875 (AB1953-2006)
- Vermont Bill S.152
- NSF/ANSI 372 Low Lead Content
- ADA ANSI/ICC A117.1
- CALGreen

Job Name \_\_\_\_\_

Item Number \_\_\_\_\_

Section/Tag \_\_\_\_\_

Model Specified \_\_\_\_\_

Architect \_\_\_\_\_

Engineer \_\_\_\_\_

Contractor \_\_\_\_\_

☐ Submitted as Shown      ☐ Submitted with Variations

Date \_\_\_\_\_



#### ECAST

ECAST products are intended for installation where state laws and local codes mandate lead content levels or in any location where lead content is a concern.



# Manual Faucets

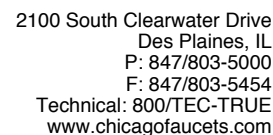


Chicago Faucets No. 786-GN8AE35ABCP, Sink Faucet for hot and cold water, concealed deck-mount with 8" fixed centers, chrome plated. Rigid/swing gooseneck spout, 8" center-to-center. 1.5 GPM (5.7 L/min) pressure compensating Softflo aerator. 4" metal, vandal-proof, wristblade handles with sixteen-point, tapered broach and secured blue and red index buttons. Quatum™ rebuildable compression cartridge, opens and closes 90°, closes with water pressure, features square, tapered stem. 1/2" NPSM supply inlets and coupling nut for 3/8" or 1/2" flexible riser. ECAST® construction with less than 0.25% lead content by weighted average. CALGreen compliant. This product meets ADA ANSI/ICC A117.1 requirements and is tested and certified to industry standards: ASME A112.18.1/CSA B125.1, Certified to NSF/ANSI 61, Section 9 by CSA, California Health and Safety Code 116875 (AB1953-2006), Vermont Bill S.152, NSF/ANSI 372 Low Lead Content, and California Green Building Standards Code (CALGreen). This product meets ADA ANSI/ICC A117.1 requirements and is tested and certified to industry standards: ASME A112.18.1/CSA B125.1, Certified to NSF/ANSI 61, Section 9 by CSA, California Health and Safety Code 116875 (AB1953-2006), Vermont Bill S.152, NSF/ANSI 372 Low Lead Content, and California Green Building Standards Code (CALGreen).



Installation should be in accordance with local plumbing codes. Flush all pipes thoroughly before installation. After installation, remove spout outlet or flow control and flush faucet thoroughly to clear any debris. Care should be taken when cleaning the product. Do not use abrasive cleaners, chemicals or solvents as they can result in surface damage. Use mild soap and warm water for cleaning and protecting the life of Chicago Faucet products. For specific operation and maintenance refer to the installation instructions and repair parts documents that are located at [www.chicagoofaucets.com](http://www.chicagoofaucets.com).

Chicago Faucets, member of the Geberit Group, is the leading brand of commercial faucets and fittings in the United States, offering a complete range of products for schools, laboratories, hospitals, office buildings, food service, airports and sport facilities. Call 1.800.TECTRUE or 1.847.803.5000 Option 1 for installation or other technical assistance.





**McGuire Manufacturing Co., Inc.**  
60 Grandview Court  
P.O. Box 746 • Cheshire, CT 06410  
203-699-1801 • Fax: 203-699-1813  
www.mcguiremfg.com

## PRODUCT SPECIFICATION

**Part No.**

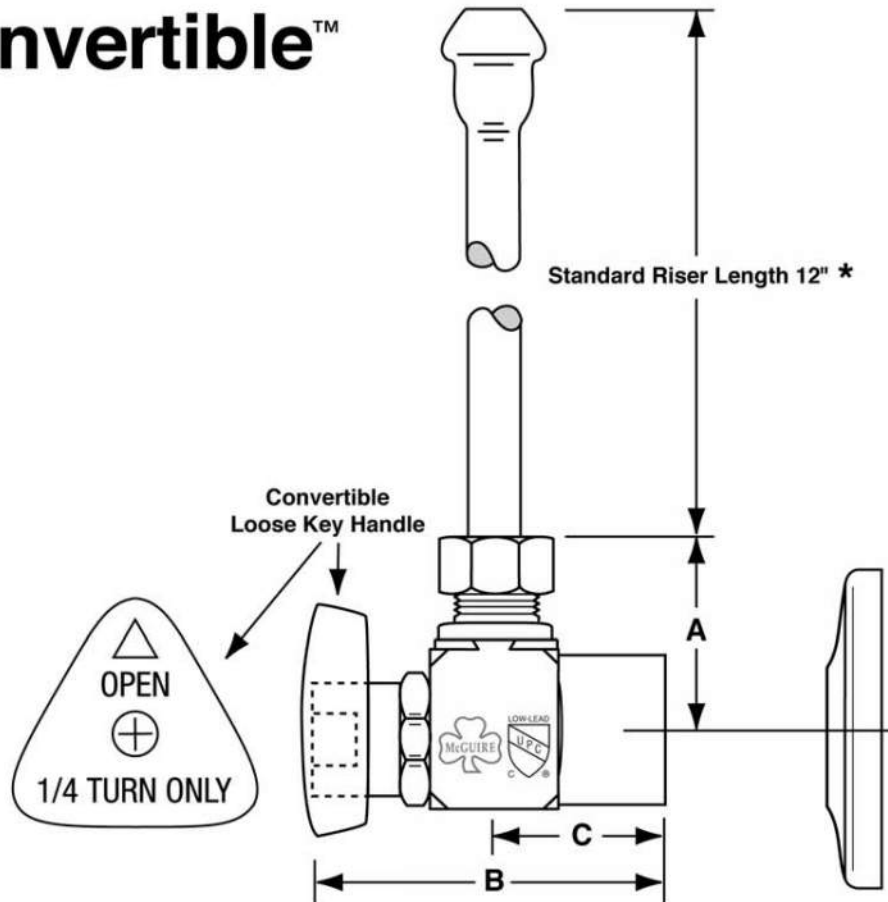
**LFBV2165**

**Quarter-Turn Brass  
Ball Valve Lavatory Supply**

**Job Name:**

**Submittal Number:**

# Convertible™



NO.	DESCRIPTION	ROUGHING MEASUREMENTS		
		A	B	C
LFBV2165	1/2" I.P.S. x 3/8" O.D.	1-3/16"	2-3/16"	1"



\* See options and accessories section for details on product variations.

## Specifications:

Supply kits shall include lead free chrome plated, commercial pattern Quarter-Turn Brass Ball Valve with convertible loose key handle, (chrome plated copper or braided stainless risers) and (shallow, deep, bell) (steel or brass) or (forged brass with set screw) flange. Inlet shall be (1/2) inch (IPS, sweat, compression). Outlet shall be (3/8) inch (compression). Supply kit shall be McGuire\_\_\_\_\_. Supply kit shall be certified by recognized authority and bear manufacturer and testing mark.



## McGuire Manufacturing Co., Inc.

60 Grandview Court  
P.O. Box 746 • Cheshire, CT 06410  
203-699-1801 • Fax: 203-699-1813  
www.mcguiremfg.com

### PRODUCT SPECIFICATION

### Part No.

### Options and Accessories

Job Name:

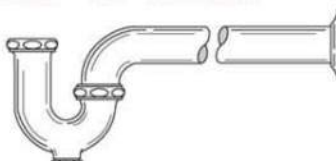
Submittal Number:

### CAST BODY P-TRAP OPTIONS

#### WALL BEND OPTIONS-

Add suffix to part number.

- 15 - 15" C to E (1-1/4" and 1-1/2" only)
- 18 - 18" C to E (1-1/4" and 1-1/2" only)
- GJ - Ground joint wallbend  
Custom sizes available.



#### FLANGE OPTIONS-

Add suffix to part number.

- F - Forged Brass, set screw, chrome plated
- DF - Deep Flange, (bell type) chrome plated brass
- SDF - Deep Flange, (bell type) chrome plated steel
- B - Box Flange, chrome plated wrought steel
- BF - Box Flange, chrome plated brass

#### STANDARD FINISH OPTIONS-

Add suffix to part number.

- C - Polished Chrome
- SC - Satin Chrome  
Custom finishes available.

Options available for McGuire "Classic" Professional Line only.

### OPTIONS FOR SUPPLIES

#### FLANGE OPTIONS- Use suffix after part number.

- F - Heavy brass, set screw
- DF - Deep flange (bell type) wrought brass
- SDF - Deep flange (bell type) steel
- B - Deep flange (box type) steel
- BF - Deep flange (box type) wrought brass

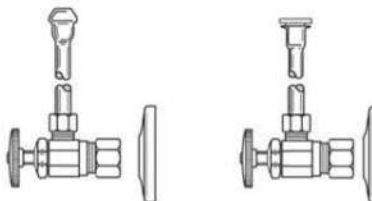
#### RISER OPTIONS- Use suffix after part number.

- R15 - 15" Standard Lavatory or Closet
- R20 - 20" Standard Lavatory or Closet
- R36 - 36" Standard Lavatory
- CR - 12" Compression Riser
- CR20 - 20" Compression Riser
- SR - 12" Sweat Riser
- SR20 - 20" Sweat Riser

#### COMMON NIPPLE OPTIONS-

Use suffix after part number.

- N3 - 3" Cast brass Nipple
- N5 - 5" Cast brass Nipple  
Custom sizes available.



#### STUFFING BOX STEM OPTION- Use suffix after part #.

- SB - Stuffing Box for Stop Valves. Not available for Convertible™ Ball Valve Supplies.

#### LOCK SHIELD CAP OPTIONS- Use suffix after part #.

- C - Cap for Standard and Heavy Line Loose Key Supply Kits

#### STOP VALVE HANDLE OPTIONS- Use suffix after part #.

- X - Heavy brass Cross Handle

#### SCREWDRIVER STEM OPTION - Use suffix after part #

- SD - Screwdriver Stem for Loose Key Supply Kits

### OPTIONS FOR STRAINERS AND DRAINS

#### 8", 10", 12" TAILPIECES IN STOCK-

Use suffix after part number.

- 8 = 8"
  - 10 = 10"
  - 12 = 12"
- Custom size tailpiece and configurations available.  
Specialty gauge brass and stainless also available.

#### STANDARD FINISH OPTIONS -

Add suffix to part number.

- C - Polished Chrome
- S - Satin Chrome  
Custom finishes available.



Options available for McGuire "Classic" Professional Line only.



# McGuire Manufacturing Co., Inc.

60 Grandview Court  
P.O. Box 746 • Cheshire, CT 06410  
203-699-1801 • Fax: 203-699-1813  
www.mcguiremfg.com

## PRODUCT SPECIFICATION

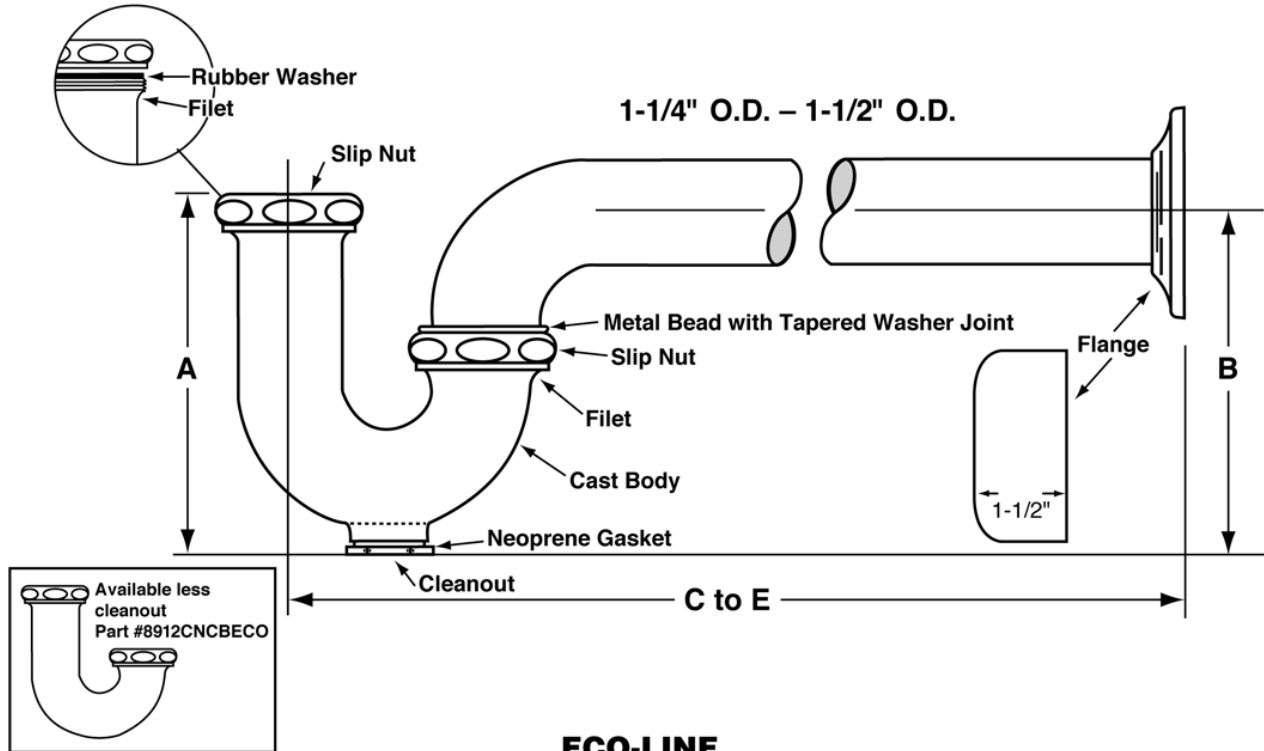
### Part No.

8872CBECO, C8872CECO, 8904CBECO  
8912CBECO, C8912CECO,  
8912CNCBECO, 8912C18BECO

**Cast Body P-Trap With  
or Without Cleanout**

**Job Name:**

**Submittal Number:**



### ECO-LINE

#### ROUGHING MEASUREMENTS

MODEL NO.	TRAP DIMENSIONS		A	B	C to E	FLANGE	SLIP NUT
	INLET	OUTLET					
8872CBECO	1-1/4"	1-1/4"	4-1/2"	4-1/2"	11"	Box	Brass
C8872CECO	1-1/4"	1-1/4"	4-1/2"	4-1/2"	10"	Shallow	Zinc
8904CBECO	1-1/2", 2"	2"	5"	6"	13-1/2"	Box	Brass
8912CBECO	1-1/2", 1-1/4"	1-1/2"	5"	5"	12"	Box	Brass
C8912CECO	1-1/2", 1-1/4"	1-1/2"	5"	5"	10-1/2"	Shallow	Zinc
8912CNCBECO	1-1/2", 1-1/4"	1-1/2"	4-3/4"	4-1/2"	12"	Box	Brass
8912C18BECO	1-1/2", 1-1/4"	1-1/2"	5"	5"	18"	Box	Brass

**FED SPEC W.W.P. 541**  
**CAST BRASS P-TRAP**  
**MINIMUM SEAL 2"**



ASME A112.18.1-2011/CSA B125.2-11

### Specifications:

Chrome plated P-Trap shall be cast brass body, with or without cleanout, with 17 gauge seamless tubular wall bend and flange.





# LAV GUARD<sup>2</sup>

FAST FIT UNDERSINK PIPING COVERS

**All New  
E-Z Series**

ADA-compliant undersink protection



## Submittal Sheet

### General Description:

LAV GUARD® 2 E-Z Series waste and supply piping covers satisfy ADA compliance requirements. Built-in *E-Z Grip* internal fasteners and internal, *E-Z Tear-To-Fit* trimming feature allow for fast installation without tools. *Series #100 E-Z* kits are designed to fit on all tubular and cast brass P-trap assemblies. *Series #400* kits are the "original" LAV GUARD design and fit schedule 40 ABS and PVC P-trap assemblies — regardless of their geometry or rotational offset. Valve cover completely encloses angle valve and supply tube for both handled and keyed type water stops.

Material	Molded vinyl
Nominal Wall	1/8" constant
Durometer	70 - 80 - Shore A
UV Protection	Will not fade or discolor
Durability	Virtually indestructible
Trimming (E-Z Series)	Internal, <i>E-Z Tear-To-Fit</i> trim feature
Fasteners (E-Z Series)	Internal <i>E-Z Grip</i> fasteners (reusable)
Color	China white
Paintability	Apply Latex paint
Burning Characteristics ASTM D-635	Self extinguished 0 sec (ATB) 0 mm (AEB)
Bacteria/Fungus Resistance	ASTM G21 and G22/ Result: 0 growth
Maintenance	Use common detergents

Manufactured under one or more of the following U.S. or Canadian patents.  
Other patents pending.  
5,303,730 5,360,031 5,524,669 5,564,463 5,678,598 5,699,828 5,915,412  
5,915,413 5,901,739 5,960,820 2,075,324 2,119,427 2,136,027 2,158,083

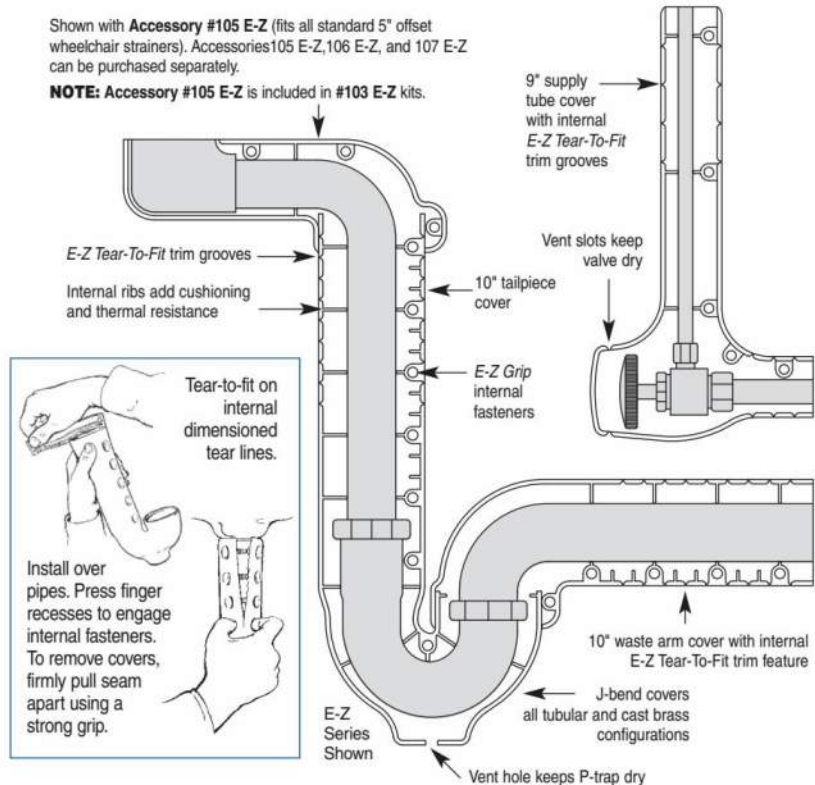


IPS Corporation, 202 Industrial Park Lane, Collierville, TN 38017  
(901) 853-5001 (800) 340-5969 FAX: (901) 853-5008  
e-mail: info@truebro.com Internet: http://www.truebro.com



Shown with **Accessory #105 E-Z** (fits all standard 5" offset wheelchair strainers). Accessories 105 E-Z, 106 E-Z, and 107 E-Z can be purchased separately.

**NOTE:** Accessory #105 E-Z is included in #103 E-Z kits.



**#100 E-Z Series** (shown above right) for tubular and cast brass P-trap assemblies.  
**#400W\* Series** (original design) for schedule 40 P-trap assemblies.

- ☐ **Model #99 E-Z**  
One angle valve and supply cover
- ☐ **Model #100 E-Z**  
One P-trap cover
- ☐ **Model #400W\***  
One P-trap cover
- ☐ **Model #101 E-Z**  
One P-trap cover, one angle valve cover
- ☐ **Model #401W\***  
One P-trap cover, one angle valve cover

- ☒ **Model #102 E-Z**  
One P-trap cover, two angle valves and covers
- ☐ **Model #402W\***  
One P-trap cover, two angle valves and covers
- ☐ **Model #103 E-Z**  
One P-trap cover, two angle valves and supply covers, one 5" offset tailpiece wheelchair strainer cover
- ☐ **Accessory #105 E-Z**  
One 5" offset tailpiece wheelchair strainer assembly

- ☐ **Accessory #105-K**  
Kohler 6" offset
- ☐ **Accessory #106 E-Z**  
One basket strainer cover and offset waste cover (adjustable to 18")
- ☐ **Accessory #107 E-Z**  
Two basket strainer covers and center or end outlet waste cover (adjustable)
- ☐ **Accessory #Ex99 E-Z**  
One 16" extension for water supply
- ☐ **Accessory #Ex100 E-Z**  
One 16" extension for drain waste arm or tailpiece

\*All #400W series items are the "original" LAV GUARD® design and construction. Specifications may change without notice.



Job/Location \_\_\_\_\_  
Designer \_\_\_\_\_

TRUEBRO reserves the right to make product and material changes at any time without notice.

2 / 07

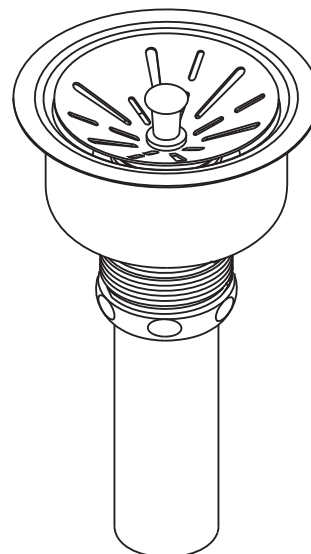
# ELKAY<sup>®</sup>

## SPECIFICATIONS

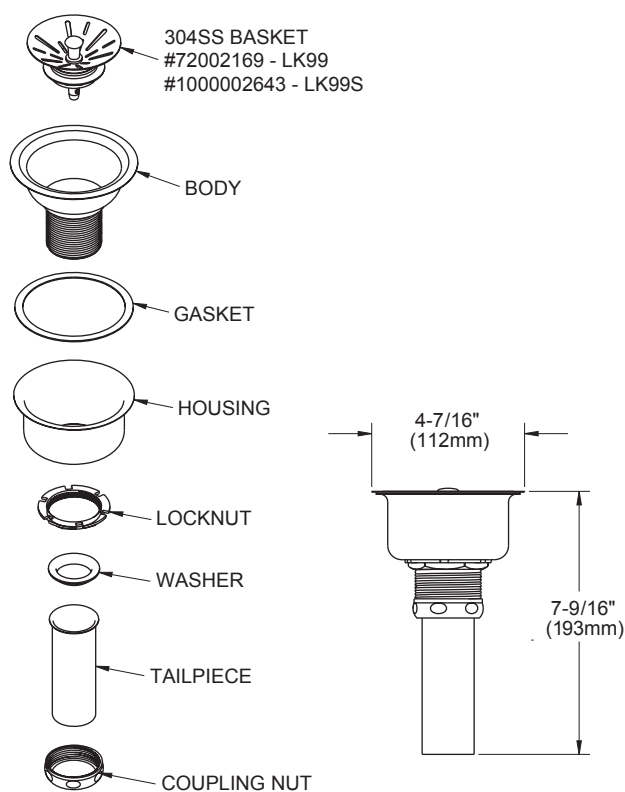
### Sink Accessories Drain Fitting Model LK99 Series

#### GENERAL

- Type 304 stainless steel body and removable conical basket strainer with metal ball bearing locking stem and rubber stopper.
- Fits 3-1/2" (89mm) opening.
- Available in the following finishes:
  - Ultra bright polished **LK99**
  - Satin **LK99S**
- Type 304 stainless steel 1-1/2" (38mm) x 4" (102mm) tailpiece



Model LK99



In keeping with our policy of continuing product improvement, Elkay reserves the right to change product specifications without notice. Please visit [elkay.com](http://elkay.com) for most current version of Elkay product specification sheets.

This specification describes an Elkay product with design, quality and functional benefits to the user. When making a comparison of other producers' offerings, be certain these features are not overlooked.



HOUSTON  
3413 E. Greenridge Drive  
Houston, TX 77057  
713.783.7780

AUSTIN  
4717 Priem Lane, Suite 102  
Pflugerville, TX 78660  
512.969.5011

DALLAS  
1203 Executive Drive East  
Richardson, TX 75081  
972.239.6060

## Proposed Change Order

PCO Number: 3616-001

PCO Date: Jul 3, 2018

### To:

Vaughn Construction

P. O. Box 4119

Austin, TX 78765

### Job Information:

J3616 - Wilco Animal Shelter

Description of Work
<i>Chicago 786-GN8AE35ABCP Faucet</i> Procure of One Faucet Chicago 786-GN8AE35ABCP

### Description

Chicago 786-GN8AE35ABCP

### Price

225.00

**Total**

**\$225.00**





18551 SE Inner Loop  
Georgetown, TX  
78626

T: (210) 328-0193

July 12, 2018

John Benham  
Jackson & Ryan Architects  
2370 Rice Boulevard, Suite 210  
Houston, TX 77005

Re: Animal Shelter Expansion

Job No: 249101

Subj: Change Proposal No. 249101-0019

Dear Sir or Madam:

We respectfully submit our proposal for an increase to our contract in the amount of \$0 (zero) dollars to provide additional concrete at New Transformer Pad for the above referenced project.

Our price is valid for Ten (10) days

Please indicate your acceptance of this change proposal by signing and returning one copy of the attached Form B breakdown of our cost.

Very truly yours,  
VAUGHN CONSTRUCTION

Thomas Morrill

A handwritten signature in blue ink, appearing to read "Tom Morrill", written in a cursive style.

Attachments:

CC:

# FORM B

PROJECT: Animal Shelter Expansion

CHANGE PROPOSAL NO: 249101-0019

QUOTATION :

Item	Labor	Materials	Subs	Total
Additional concrete at New Transformer Pa	\$0.00	\$0.00	\$1,037.00	\$1,037.00
Subcontractor default insurance	\$0.00	\$13.00	\$0.00	\$13.00
To be funded by CM contingency	\$0.00	\$(1,050.00)	\$0.00	\$(1,050.00)

<b>Totals</b>	\$0.00	\$(1,037.00)	\$1,037.00	\$0.00
---------------	--------	--------------	------------	--------

<b>Insurance, Tax, Benefits on Labor</b>	\$0.00
--	--------

<b>Overhead</b>	\$0.00
-----------------	--------

<b>Fee on Subs</b>	\$0.00
--------------------	--------

<b>Fee on JTV</b>	\$0.00
-------------------	--------

<b>Bond</b>	\$0.00
-------------	--------

<b>Remodel Tax</b>	\$0.00
--------------------	--------

<b>TOTAL</b>	<b>\$0.00</b>
--------------	---------------

TIME EXTENSION TO CONTRACT: 0 Days

Submitted Date: 7/12/2018

Accepted

VAUGHN CONSTRUCTION

By: \_\_\_\_\_

By:   
Thomas Morrill

Date \_\_\_\_\_

Proposal Valid for 10 Days



**T & M CHANGE PROPOSAL**  
 WILCO ANIMAL SHELTER  
 Chasco Project No: 17207  
 6/21/2018

Chasco Cost Code: 26-2200

Work Location: WILCO Animal Shelter

Prepared by: Bill Bambrick

**Description:** Add 13" of Concrete at New Transformer Pad

ITEM	Cost code	DESCRIPTION	Qty	Unit	LABOR		MATERIALS		EQUIP/SUBCONTRACT		TOTAL
					UNIT	TOTAL	UNIT	TOTAL	UNIT	TOTAL	
1		General Superintendent	1	hr	95.00	\$95	0.00	\$0	0.00	\$0	\$95
2		Journeyman	5	hr	28.00	\$140	0.00	\$0	0.00	\$0	\$140
3		Skilled Laborer	5	hr	24.00	\$120	0.00	\$0	0.00	\$0	\$120
4		Mobilize Equipment/Material	1	ld	0.00	\$0	0.00	\$0	250.00	\$250	\$250
5		3/4 Ton Pickup	1	hr	0.00	\$0	0.00	\$0	15.00	\$15	\$15
6		Concrete	2	cy	0.00	\$0	105.00	\$210	0.00	\$0	\$210
7		2 Mats #5 Rebar	225	lbs	0.00	\$0	0.50	\$113	0.00	\$0	\$113
		<b>SUBTOTALS</b>				\$355	0.00	\$323	0.00	\$265	\$943

Further description:

Overhead & Profit	10.00%	\$94
<b>SUBTOTAL</b>		<b>\$1,037</b>
Bond	0.000%	\$0
<b>GRAND TOTAL</b>		<b>\$1,037</b>



18551 SE Inner Loop  
Georgetown, TX  
78626

T: (210) 328-0193

July 12, 2018

John Benham  
Jackson & Ryan Architects  
2370 Rice Boulevard, Suite 210  
Houston, TX 77005

Re: Animal Shelter Expansion

Job No: 249101

Subj: Change Proposal No. 249101-0020

Dear Sir or Madam:

We respectfully submit our proposal for an increase to our contract in the amount of \$0 (zero) dollars to provide additional subgrade prep and concrete at Wilco show barn for the above referenced project.

Our price is valid for Ten (10) days

Please indicate your acceptance of this change proposal by signing and returning one copy of the attached Form B breakdown of our cost.

Very truly yours,  
VAUGHN CONSTRUCTION

Thomas Morrill

A handwritten signature in blue ink, appearing to read "Tom Morrill", written in a cursive style.

Attachments:

CC:

# FORM B

PROJECT: Animal Shelter Expansion

CHANGE PROPOSAL NO: 249101-0020

QUOTATION :

Item	Labor	Materials	Subs	Total
Additional subgrade prep and concrete at Wilco show barn	\$0.00	\$0.00	\$9,202.00	\$9,202.00
Subcontractor default insurance	\$0.00	\$115.00	\$0.00	\$115.00
To be funded from owners contingency	\$0.00	\$(9,634.00)	\$0.00	\$(9,634.00)
CM Fee	\$0.00	\$317.00	\$0.00	\$317.00

<b>Totals</b>	\$0.00	\$(9,202.00)	\$9,202.00	\$0.00
<b>Insurance, Tax, Benefits on Labor</b>				\$0.00
<b>Overhead</b>				\$0.00
<b>Fee on Subs</b>				\$0.00
<b>Fee on JTV</b>				\$0.00
<b>Bond</b>				\$0.00
<b>Remodel Tax</b>				\$0.00
<b>TOTAL</b>				<b>\$0.00</b>

TIME EXTENSION TO CONTRACT: 0 Days

Submitted Date: 7/12/2018

Accepted

VAUGHN CONSTRUCTION

By: \_\_\_\_\_

By:   
Thomas Morrill

Date \_\_\_\_\_

Proposal Valid for 10 Days



**T & M CHANGE PROPOSAL**  
 WILCO ANIMAL SHELTER  
 Chasco Project No: 17207.1  
 6/21/2018

Chasco Cost Code: 50-5000

Work Location: 425 Morrow St.

Prepared by: Bill Bambrick

**Description:** Prep subgrade, pour concrete slab and assemble dog cages at 425 Morrow St. for Temporary Kennels at Williamson Co. Show Barn.

ITEM	Cost code	DESCRIPTION	Qty	Unit	LABOR		MATERIALS		EQUIP/SUBCONTRACT		TOTAL
					UNIT	TOTAL	UNIT	TOTAL	UNIT	TOTAL	
1		Project Manager	1	hr	105.00	\$105	0.00	\$0	0.00	\$0	\$105
2		General Superintendent	1	hr	95.00	\$95	0.00	\$0	0.00	\$0	\$95
3		Foreman	23	hr	80.00	\$1,840	0.00	\$0	0.00	\$0	\$1,840
4		Journeyman	85	hr	28.00	\$2,380	0.00	\$0	0.00	\$0	\$2,380
5		Skilled Laborer	30	hr	24.00	\$720	0.00	\$0	0.00	\$0	\$720
6		Mobilize Equipment/Material	1	ld	0.00	\$0	0.00	\$0	350.00	\$350	\$350
7		3/4 Ton Pickup	2	hr	0.00	\$0	0.00	\$0	15.00	\$30	\$30
8		1 Ton Truck	23	hr	0.00	\$0	0.00	\$0	21.00	\$483	\$483
9		20' Trailer	10	hr	0.00	\$0	0.00	\$0	4.00	\$40	\$40
10		Concrete Buggy	2	hr	0.00	\$0	0.00	\$0	30.00	\$60	\$60
11		Concrete w/ Fiber Reinforcement	13.5	cy	0.00	\$0	110.00	\$1,485	0.00	\$0	\$1,485
12		Forming Materials	1	ls	0.00	\$0	75.00	\$75	0.00	\$0	\$75
13		Grout per Bag	20	ea	0.00	\$0	31.39	\$628	0.00	\$0	\$628
14		Drilling, Chipping & Cutting Equip.	3	hr	0.00	\$0	0.00	\$0	25.00	\$75	\$75
		<b>SUBTOTALS</b>				\$5,140	0.00	\$2,188	0.00	\$1,038	\$8,366

Further description:

Overhead & Profit	10.00%	\$837
<b>SUBTOTAL</b>		<b>\$9,202</b>
Bond	0.000%	\$0
<b>GRAND TOTAL</b>		<b>\$9,202</b>



18551 SE Inner Loop  
Georgetown, TX  
78626

T: (210) 328-0193

July 12, 2018

John Benham  
Jackson & Ryan Architects  
2370 Rice Boulevard, Suite 210  
Houston, TX 77005

Re: Animal Shelter Expansion

Job No: 249101

Subj: Change Proposal No. 249101-0021

Dear Sir or Madam:

We respectfully submit our proposal for an increase to our contract in the amount of \$0 (zero) dollars to provide additional Pipe Penetration per RFI 63 for the above referenced project.

Our price is valid for Ten (10) days

Please indicate your acceptance of this change proposal by signing and returning one copy of the attached Form B breakdown of our cost.

Very truly yours,  
VAUGHN CONSTRUCTION

Thomas Morrill

A handwritten signature in blue ink, appearing to read "Tom Morrill", written in a cursive style.

Attachments:

CC:

# FORM B

PROJECT: Animal Shelter Expansion

CHANGE PROPOSAL NO: 249101-0021

QUOTATION :

Item	Labor	Materials	Subs	Total
Additional Pipe Penetration Per RFI 63	\$0.00	\$0.00	\$90.00	\$90.00
CM Fee	\$0.00	\$3.00	\$0.00	\$3.00
To be funded by owners contingency	\$0.00	\$(93.00)	\$0.00	\$(93.00)

<b>Totals</b>	\$0.00	\$(90.00)	\$90.00	\$0.00
---------------	--------	-----------	---------	--------

<b>Insurance, Tax, Benefits on Labor</b>	\$0.00
--	--------

<b>Overhead</b>	\$0.00
-----------------	--------

<b>Fee on Subs</b>	\$0.00
--------------------	--------

<b>Fee on JTV</b>	\$0.00
-------------------	--------

<b>Bond</b>	\$0.00
-------------	--------

<b>Remodel Tax</b>	\$0.00
--------------------	--------

<b>TOTAL</b>	<b>\$0.00</b>
--------------	---------------


TIME EXTENSION TO CONTRACT: 0 Days

Submitted Date: 7/12/2018

Accepted

VAUGHN CONSTRUCTION

By: \_\_\_\_\_

By:   
Thomas Morrill

Date \_\_\_\_\_

Proposal Valid for 10 Days



# REQUEST FOR INFORMATION



18551 SE Inner Loop  
Georgetown, TX  
78626

T: (210) 328-0193

**RFI NO:** 63

**To:** John Benham  
Jackson & Ryan Architects  
2370 Rice Boulevard, Suite 210  
Houston, TX 77005  
Phone: (713) 526-5436  
Fax:  
**From:** Rodney Wilson

**Date:** 06/28/2018

**Required By:** 07/05/2018

**Owner:** Williamson County, Texas

**Job No :** 249101

**Project:** Animal Shelter Expansion  
1855 SE Inner Loop  
Georgetown, TX 78626

**Re:** Vent Piping for Gas Water Heater

**Spec. Section:**

**Drawing Number:** P.3-3.01, P.3-3.02, P.3-3.03

**Other Reference:**

**Question:**

P.3-3.01 shows the location of the Gas Water Heater but does not show air supply/vent pipes for 1st/2nd floor or the roof on P.3-3.02 and P.3-3.03. The only roof vents shown are the two 3" sewer lines. The water heater requires two 3" PVC pipes for supply and ventilation.

---

**Proposed Answer:**

Please provide a route for the Gas Water Heater air supply/vent pipes

---

**Answer:**

See attached revised drawings P0.01, P.2-3.01, P.3-3.02, P.3-3.02, P.3-3.03, and P.3-4.00 for gas water heater combustion air supply and vent pipe routing.

Curtis D. Hagar & Wesley Stidham, P.E.  
Shah Smith & Associates, Inc.  
Texas Registered Engineering Firm #F-2113  
07-03-2018

A handwritten signature in black ink, appearing to be "W" or "V" with a flourish.

---

Very truly yours,

**VAUGHN CONSTRUCTION**

**Attachments:**

**CC:**





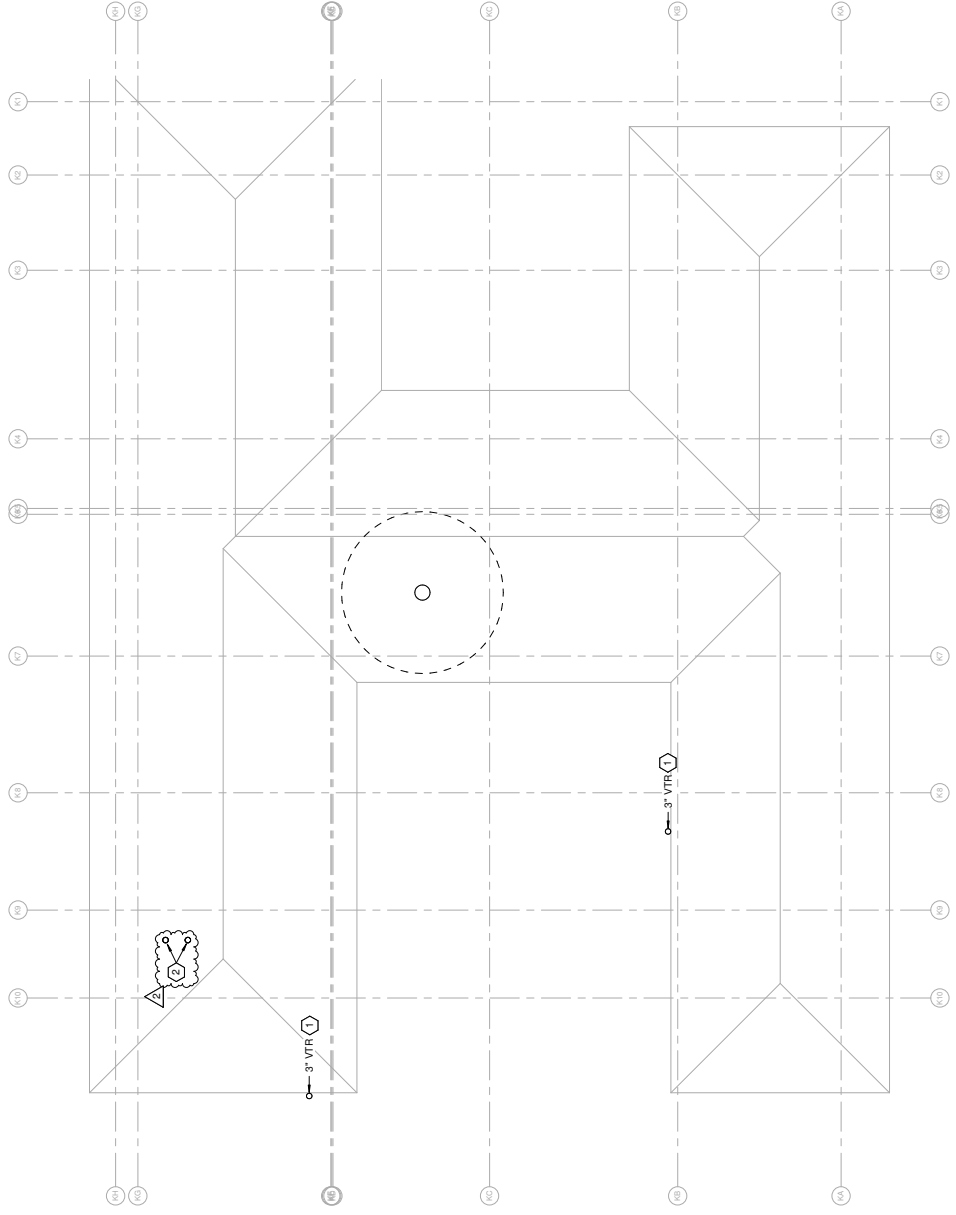


GENERAL NOTES

- A. REFER TO SUBMITTAL SHEETS FOR PLUMBING NOTES THAT SHALL APPLY TO ALL SHEETS IN THIS SET UNLESS NOTED OTHERWISE IN THE KEYED NOTES.
- B. UNLESS OTHERWISE NOTED, PLUMBING ITEMS SHOWN BOLD ARE TO BE NEW, PLUMBING ITEMS SHOWN LIGHT ARE EXISTING TO REMAIN.

KEYED NOTES - P.2-3.02

- 1. SECURE SANITARY VENT TO ROOF FASCIA AND TERMINATE AT LEAST 3' ABOVE ROOF FINISH.
- 2. CONCENTRIC VENT FOR GYM-1 AND GYM-2 FLUES AND COMBUSTION AIR INTAKES.



1 PLUMBING ROOF PLAN  
1/8" = 1'-0"

Date Issued:  
09/22/17  
10/15/17  
06/15/18  
07/03/18

ISSUE FOR PERMIT  
FIRST RESUBMITTAL-PLAN REVIEW  
AS I-006  
RF I-003

GEORGETOWN PROJECT NO. 2017-2692

Project Number:  
10402

WILLIAMSON COUNTY  
REGIONAL ANIMAL  
SHELTER

1835 SE INNER LOOP  
GEORGETOWN, TX 78626  
JACKSON & RYAN, ARCHITECTS  
2370 RICE BOULEVARD, HOUSTON, TEXAS 77055

CIVIL ENGINEER  
DAYTON M. KIRK  
LANDSCAPE ARCHITECT  
CHRISTOPHER J. RYAN  
STRUCTURAL ENGINEER  
MAURA S. WATKINS  
MECHANICAL ELECTRICAL & PLUMBING ENGINEER  
SHAM SMITH & ASSOCIATES, INC.  
701-664-0139  
107-603-0101

GENERAL CONTRACTOR  
VAUGHN CONSTRUCTION  
512-318-1132

Tx. Registration # F-2113



Sheet Content

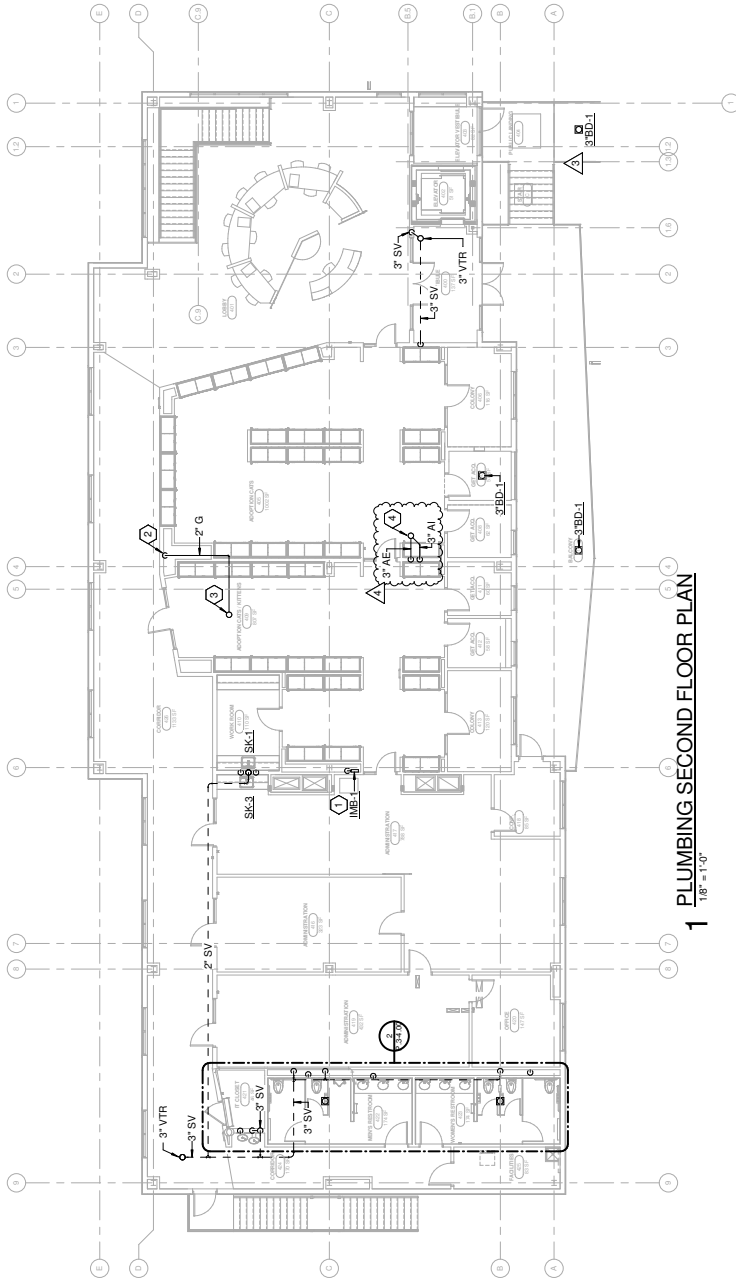
NEW BLDG - PLUMBING  
SECOND FLOOR PLAN

SCALE: 1/8" = 1'-0"

Copyright 2018 JACKSON & RYAN, ARCHITECTS  
Do not duplicate or distribute this document or any part thereof without the written consent of Jackson & Ryan, Architects. This document is the property of Jackson & Ryan, Architects and is to be used only for the project and location specified herein. It is not to be used for any other project or location without the written consent of Jackson & Ryan, Architects. The user of this document is responsible for obtaining all necessary permits and approvals from the appropriate authorities. The user of this document is also responsible for obtaining all necessary insurance and bonding for the project. The user of this document is also responsible for obtaining all necessary permits and approvals from the appropriate authorities. The user of this document is also responsible for obtaining all necessary insurance and bonding for the project.

P.3-3.02

Plot Date: 10/18/2017



1 PLUMBING SECOND FLOOR PLAN  
1/8" = 1'-0"

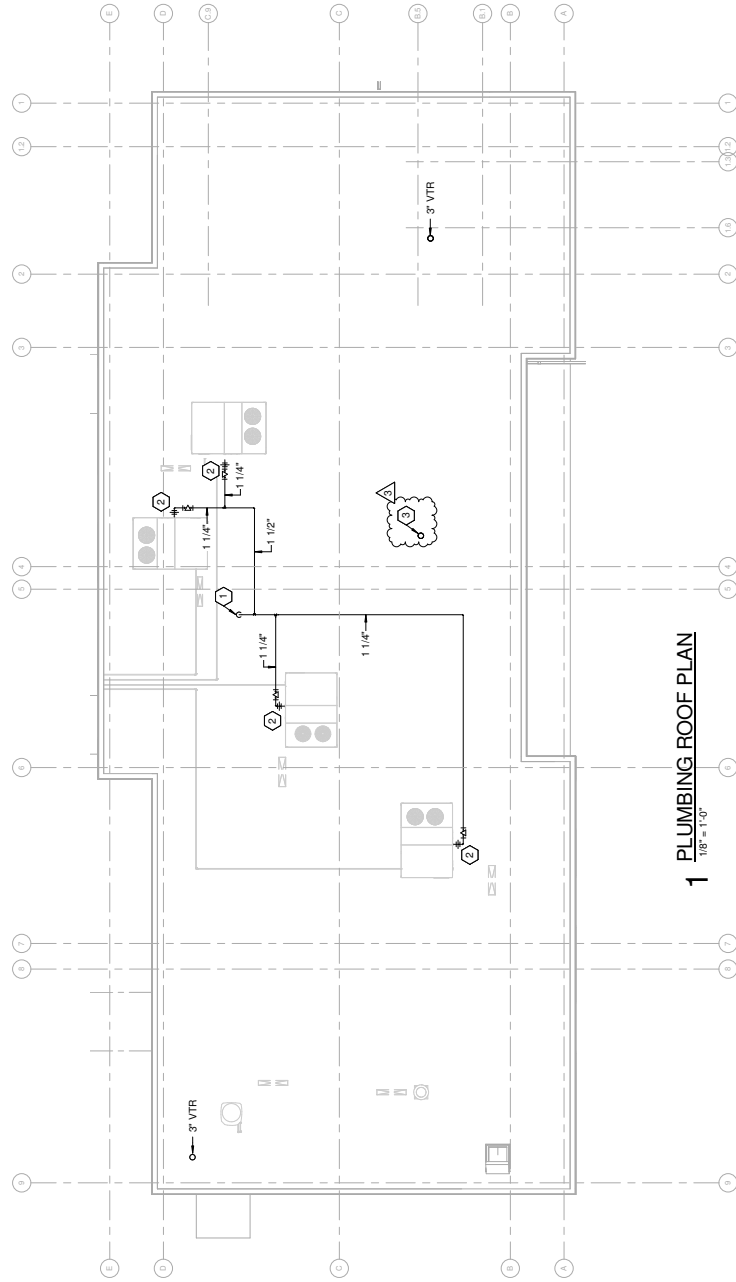
KEYED NOTES - P.3-3.02

1. 2" DOWN FROM BELOW TO CEMENT SUPPLY BOX AT 42" AFF.
  2. 2" NATURAL GAS SUPPLY FROM BELOW.
  3. ROUTE 2" NATURAL GAS SUPPLY UP TO ROOF ABOVE.
  4. SEE P.3-3.03 FOR CONTINUATION.
- CONNECT 3" X 6" TO CONCENTRIC VENT TERMINATION

GENERAL NOTES

1. REFER TO SHEET P.3-3.01 FOR GENERAL PLUMBING NOTES THAT SHALL APPLY TO ALL SHEETS IN THIS SET UNLESS NOTED OTHERWISE IN THE KEYED NOTES.





**PLUMBING ROOF PLAN**  
1/8" = 1'-0"

## GENERAL NOTES

- <sup>1</sup> REFER TO SHEET P0.01 FOR GENERAL PLUMBING NOTES THAT SHALL APPLY TO ALL SHEETS IN THIS SET UNLESS NOTED OTHERWISE IN THE KEYED NOTES.

## KEYED NOTES - P.3-3.03

- 1 ROUTE 2 NATURAL GAS SUPPLY FROM BELOW.
- 2 ROUTE 1 1/4" NATURAL GAS SUPPLY TO NEW MECHANICAL UNIT. PROVIDE HARD-PIPED CONNECTION WITH 6" DIRT LEG, LUBRICATED PLUG VALVE, AND DIELECTRIC UNION.
- 3 3" CONCENTRIC VENT TERMINATION FOR GWH-1 FLUE AND COMBUSTION AIR INTAKE.



Tx, Registration # F-2113

**GENERAL CONTRACTOR**  
**VAUGHN CONSTRUCTION**  
512-318-1332

**JACKSON & RYAN ARCHITECTS**  
2370 RICE BOULEVARD, HOUSTON, TEXAS 77005

1855 SE INNER LOOP  
GEORGETOWN, TX 78626

**WILLIAMSON COUNTY  
REGIONAL ANIMAL  
SHELTER**

GEORGETOWN PROJECT NO. 2017-39592

**MECHANICAL-ELECTRICAL & PLUMBING ENGINEER**  
**SHAH SMITH & ASSOCIATES, INC.**  
713-664-0120  
512-851-0404

512-892-4053  
STRUCTURAL ENGINEER  
**MATRIX STRUCTURAL ENGINEERS**

**CIVIL ENGINEER**  
DAVCAR ENGINEERING  
512-328-4428  
LANDSCAPE ARCHITECT

CIVIL ENGINEER

NEW BLDG - PLUMBING  
ROOF PLAN

SCALE: 1/8" = 1'-0"

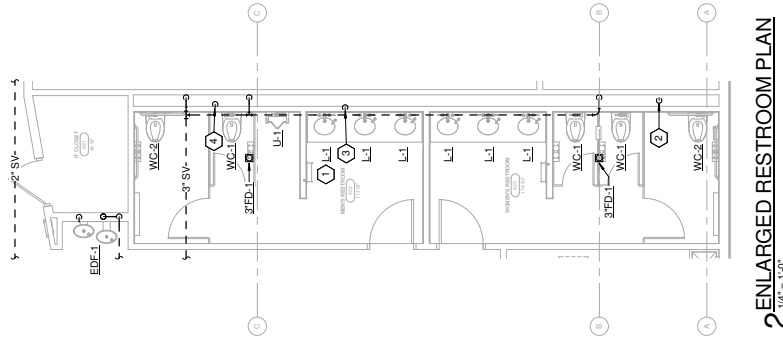
**JACKSON & RYAN, ARCHITECTS**

**P.3-3.03**

Plot Date: 10/18/2017



- 1 PROVIDE LAVATORY BRANCH TAILPIPE EQUAL TO SINK CHIEF 1215-066, OR EQUAL, FOR CONDENSATE DRAIN CONNECTION.
- 2 1 1/2" CWP SUPPLY FROM BELOW TO SERVE WOMEN'S RESTROOM FIXTURES.
- 3 3/4" DWS SUPPLY FROM BELOW TO SERVE LAVATORIES.
- 4 1 1/2" CWP SUPPLY FROM BELOW TO SERVE MEN'S RESTROOM FIXTURES.
- 5 MOUNT HOT WATER CIRC. PUMP (HWC-1) ON WALL. SEE DETAIL 7790-04 FOR PUMP REQUIREMENTS.
- 6 MOUNT THERMOSTATIC MIXING VALVE (TMV-1) ON WALL. SEE DETAIL 7800-04 FOR PUMP REQUIREMENTS.
- 7 PROVIDE 3/4" BALL VALVES WITH CLOSE THREAD ADAPTERS AT 24" AFF AND 48" AFF FOR CONNECTION OF WASHDRAIN.



# 1 ENLARGED PLUMBING ROOM PLAN

**GENERAL CONTRACTOR**  
**VAUGHN CONSTRUCTION**  
512-318-1332



Sheet Content  
NEW BLDG - ENLARGED  
PLANS

SCALE: 1/4" = 1'-0"



JACKSON & RYAN ARCHITECTS  
Concepts by 1996

*Copyright © 2006* **JACKSON & RYAN, ARCHITECTS**

P.3-4.00





3300 Duke Road  
Austin, TX 78724  
Phone: (512) 926-3940  
Fax: (512) 926-7835

## Request for Change Order

To: J T Vaughn Construction Co  
10355 Westpark Dr  
Houston, TX 77042  
Project: Animal Shelter Expansion

---

TFW RFC No: 1  
Date: 7/5/2018  
Description: Additional Pipe Penetration

The above work is subject to the same conditions as specified in the original contract unless otherwise stipulated.

Upon approval the sum of \$90.00 will be added to the contract price.

Original Contract	\$93,695.00
Other Approved Change Orders	\$0.00
Total Contract to Date	\$93,695.00
This Request	\$90.00
Other Pending Requests	\$0.00
Total Contract plus Pending RFCs	\$93,785.00

Authorized Signature: \_\_\_\_\_ Date: \_\_\_\_\_  
Texas Fifth Wall Roofing Systems, Inc.

Authorized Signature: \_\_\_\_\_ Date: \_\_\_\_\_  
J T Vaughn Construction Co





## CHANGE ORDER

COST CODE: 062201

QSR NO.: 0013

**COMMITMENT NO.:** 249101-0014

**CHANGE ORDER NO.:** 001

**TO:** Hallmark Fashion Kitchens, Inc  
dba Hallmark Casework  
3413 E. Greenridge  
Houston, TX 77057

**DATE:** 7/12/2018

**OWNER:** Williamson County, Texas

**PROJECT:** Animal Shelter Expansion  
1855 SE Inner Loop  
Georgetown, TX 78626

**PROJECT MANAGER:** Doug Boram

**SOURCE OF FUNDS:** Owner Contingency

**FOR:**

For adding a faucet in surgery prep room 106 per RFI 61

**AMOUNT:** Add(+): **TWO HUNDRED TWENTY FIVE AND XX/100 Dollars (\$225.00)**

Deduct(-):

**J.T. VAUGHN CONSTRUCTION, LLC**

**BY:** \_\_\_\_\_

**ACCEPTED BY:** Hallmark Fashion Kitchens, Inc  
dba Hallmark Casework

**DATE:**

*Please sign and return this Change Order.*

We will complete the execution and return the original for your files.  
6604 N. Lamar, Austin TX 78752, Ph. (512) 318-1332, Fax. (512) 681-9752



## CHANGE ORDER

COST CODE: 030501

QSR NO.: 0013

**COMMITMENT NO.:** 249101-0001

**CHANGE ORDER NO.:** 008

**TO:** Chasco Contractors, Ltd., L.L.P. by Chasco Contracting, GP,  
LLC, Its General Partner  
dba Chasco Constructors  
PO Box 165  
2801 E Old Settlers Blvd  
Round Rock, TX 78665  
**OWNER:** Williamson County, Texas

**DATE:** 7/12/2018

**PROJECT:** Animal Shelter Expansion  
1855 SE Inner Loop  
Georgetown, TX 78626

**PROJECT MANAGER:** Doug Boram

**SOURCE OF FUNDS:** Owner Contingency

**FOR:**

Additional subgrade prep and concrete at Wilco show barn

**AMOUNT:** Add(+): **NINE THOUSAND TWO HUNDRED TWO AND XX/100 Dollars (\$9,202.00)**

Deduct(-):

**J.T. VAUGHN CONSTRUCTION, LLC**

**BY:** \_\_\_\_\_

**ACCEPTED BY:** Chasco Contractors, Ltd., L.L.P. by Chasco  
Contracting, GP, LLC, Its General Partner

**DATE:**

\_\_\_\_\_

*Please sign and return this Change Order.*

We will complete the execution and return the original for your files.  
6604 N. Lamar, Austin TX 78752, Ph. (512) 318-1332, Fax. (512) 681-9752



## CHANGE ORDER

COST CODE: 030501

QSR NO.: 0013

**COMMITMENT NO.:** 249101-0001

**CHANGE ORDER NO.:** 007

**TO:** Chasco Contractors, Ltd., L.L.P. by Chasco Contracting, GP,  
LLC, Its General Partner  
dba Chasco Constructors  
PO Box 165  
2801 E Old Settlers Blvd  
Round Rock, TX 78665  
**OWNER:** Williamson County, Texas

**DATE:** 7/12/2018

**PROJECT:** Animal Shelter Expansion  
1855 SE Inner Loop  
Georgetown, TX 78626

**PROJECT MANAGER:** Doug Boram

**SOURCE OF FUNDS:** CM Contingency

**FOR:**

Additional concrete at New Transformer Pad

**AMOUNT:** Add(+): **ONE THOUSAND THIRTY SEVEN AND XX/100 Dollars (\$1,037.00)**

Deduct(-):

**J.T. VAUGHN CONSTRUCTION, LLC**

**BY:** \_\_\_\_\_

**ACCEPTED BY:** Chasco Contractors, Ltd., L.L.P. by Chasco  
Contracting, GP, LLC, Its General Partner

**DATE:**

\_\_\_\_\_

*Please sign and return this Change Order.*

We will complete the execution and return the original for your files.  
6604 N. Lamar, Austin TX 78752, Ph. (512) 318-1332, Fax. (512) 681-9752



## CHANGE ORDER

COST CODE: 075001

QSR NO.: 0013

---

**COMMITMENT NO.:** 249101-0016

**CHANGE ORDER NO.:** 001

**TO:** Texas Fifth Wall Roofing Systems, Inc.  
3300 Duke Rd.  
Austin, TX 78724

**DATE:** 7/12/2018

**OWNER:** Williamson County, Texas

**PROJECT:** Animal Shelter Expansion  
1855 SE Inner Loop  
Georgetown, TX 78626

**PROJECT MANAGER:** Doug Boram

**SOURCE OF FUNDS:** Owner Contingency

**FOR:**  
Additional Pipe Penetration Per RFI 63

**AMOUNT:** Add(+): **NINETY AND XX/100 Dollars (\$90.00)**  
Deduct(-):

**J.T. VAUGHN CONSTRUCTION, LLC**

**BY:** \_\_\_\_\_

**ACCEPTED BY:** Texas Fifth Wall Roofing Systems, Inc.

**DATE:**

\_\_\_\_\_

\_\_\_\_\_

*Please sign and return this Change Order.*

We will complete the execution and return the original for your files.  
6604 N. Lamar, Austin TX 78752, Ph. (512) 318-1332, Fax. (512) 681-9752