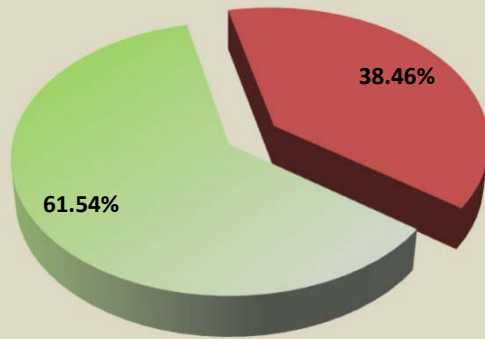


**Year to Date Collection Report  
December 1-31, 2018**

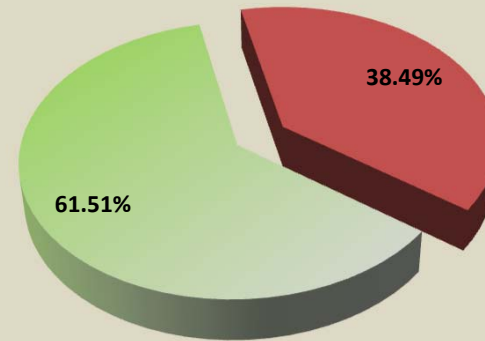
■ YTD Collected ■ YTD Uncollected



**GW**

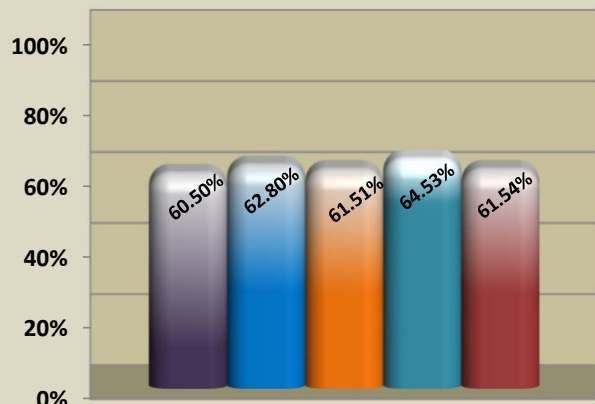
**Year to Date Collection Report  
December 1-31, 2018**

■ YTD Collected ■ YTD Uncollected



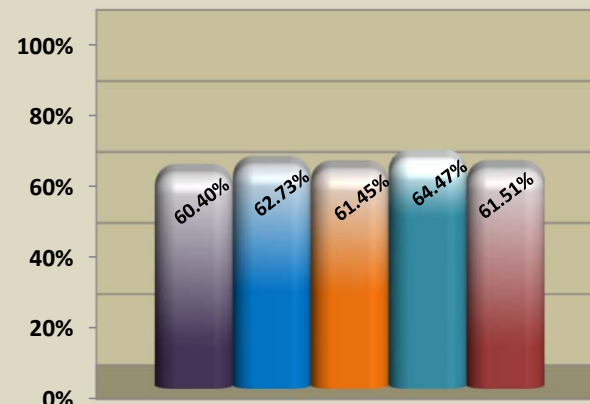
**RF**

**Percent of Roll Collected Comparison  
December 2014-2018**



**GW**

**Percent of Roll Collected Comparison  
December 2014-2018**



**RF**

■ 2014 ■ 2015 ■ 2016 ■ 2017 ■ 2018  
Tax Year

■ 2014 ■ 2015 ■ 2016 ■ 2017 ■ 2018  
Tax Year