

**WORK AUTHORIZATION NO. 5**

**PROJECT: Engineering Design Services for Drainage Improvements on Phillip Lane, CR 426 and CR 331**

This Work Authorization is made pursuant to the terms and conditions of the Williamson County Contract for Engineering Services, being dated **March 6, 2018** and entered into by and between Williamson County, Texas, a political subdivision of the State of Texas, (the "County") and **Alliance Transportation Group** (the "Engineer").

Part 1. The Engineer will provide the following Engineering Services set forth in Attachment "B" of this Work Authorization.

Part 2. The maximum amount payable for services under this Work Authorization without modification is **\$80,000.00.**

Part 3. Payment to the Engineer for the services established under this Work Authorization shall be made in accordance with the Contract.

Part 4. This Work Authorization shall become effective on the date of final acceptance and full execution of the parties hereto and shall terminate on **March 31, 2021.** The Engineering Services set forth in Attachment "B" of this Work Authorization shall be fully completed on or before said date unless extended by a Supplemental Work Authorization.

Part 5. This Work Authorization does not waive the parties' responsibilities and obligations provided under the Contract.


Part 6. County believes it has sufficient funds currently available and authorized for expenditure to finance the costs of this Work Authorization. Engineer understands and agrees that County's payment of amounts under this Work Authorization is contingent on the County receiving appropriations or other expenditure authority sufficient to allow the County, in the exercise of reasonable administrative discretion, to continue to make payments under this Contract. It is further understood and agreed by Engineer that County shall have the right to terminate this Contract at the end of any County fiscal year if the governing body of County does not appropriate sufficient funds as determined by County's budget for the fiscal year in question. County may effect such termination by giving written notice of termination to Engineer.

Part 7. This Work Authorization is hereby accepted and acknowledged below.

EXECUTED this \_\_\_\_ day of \_\_\_\_\_, 2019.

ENGINEER:

Alliance Transportation Group

By:  Digitally signed by Clint Jumper  
Date: 2019.02.14 14:49:16 -06'00'  
\_\_\_\_\_  
Signature

Clint Jumper  
Printed Name

VP, Engineering  
Title

COUNTY:

Williamson County, Texas

By: \_\_\_\_\_  
Signature

Bill Gravell, Jr.  
Printed Name

Williamson County Judge  
Title

## LIST OF ATTACHMENTS

Attachment A - Services to be Provided by County

Attachment B - Services to be Provided by Engineer

Attachment C - Work Schedule

Attachment D - Fee Schedule

**Attachment A - Services to be Provided by County**

Please see next page.

## **Attachment A**

### **Services to be Provided by County**

Williamson County Road & Bridge Division personnel will provide:

- Project direction, review and oversight.
- Topographic and R.O.W Surveys.
- Geotechnical investigations, data and reports.
- ROW Documents and Drainage Reports.
- Conducting pre-bid meeting, responding to contractor questions during bidding, tabulating and evaluating bids after bid opening, and providing recommendation of award of contract.
- Construction oversight, administration and management.

**Attachment B - Services to be Provided by Engineer**

Please see next pages.

## **Attachment B**

### **Services to be Provided by the Engineer**

Project Locations:

1. **Phillip Lane – from CR 201 to East End (4,800')**
2. **CR 426 – from CR 427 to County Line (10,000')**
3. **CR 331 – from CR 329 to FM 972 (7,000')**

Task 1: Project Management

Attend Progress Review Meetings with County Road & Bridge department at 50%, 90% and Final.  
Prepare monthly progress reports and invoices. Maintain project schedule and perform QA/QC.

Task 2: Topographic and R.O.W Surveys

To be provided by the County

Task 3: Preliminary Engineering

Delineate drainage areas and perform runoff calculations for 5-yr, 10-yr, and 25-yr storm events for parallel driveway pipes and non-bridge class cross culverts within the project limits, including data collection, and field reconnaissance. Provide a scroll plot (1" = 100') showing drainage area boundaries, time of concentration path, drainage area I.D., 2' LIDAR contours and aerial background provided by the County. Provide table showing runoff calculation results.

Task 4: Geotechnical Investigations

N/A

Task 5: Environmental Studies

N/A

Task 6: Utility Coordination

N/A

Task 7: FEMA Coordination

N/A

Task 8: Final Engineering

Calculate capacity of existing parallel driveway pipes and non-bridge class cross culverts. Determine parallel driveway pipes and non-bridge class culverts in need of replacement due to condition, inadequate capacity, or safety treatment. Provide 11x17 Plan & Plan layout sheet (1" = 50') for proposed improvements to parallel driveway pipes and non-bridge class cross culverts showing roadway centerline, stationing, approximate ROW, 2' LIDAR contours (provided by the County), and aerial background. Provide Quantity summary table for proposed drainage facility improvements. Provide exhibits (8.5x 11 Plan view) for temporary construction and /or drainage easements to facility construction of proposed drainage improvements. Exhibits shall show roadway centerline,

approximate ROW line, boundary and dimensions of proposed easement for the use in preparing easement documents by others.

Task 9: Bidding Phase Services

N/A

Task 10: Construction Phase Services

N/A

**Deliverables:**

50% Submittal:

- 2 copies of scroll plots of drainage areas and runoff calculations
- Quantity Summary
- Engineer's internal QA/QC marked up set

90% Submittal:

- 2 paper copies of 11" x 17" Plan Sheets
- 2 paper copies temporary construction and drainage easement exhibits on 8.5 x 11
- Quantity summary
- Engineer's internal QA/QC marked up set

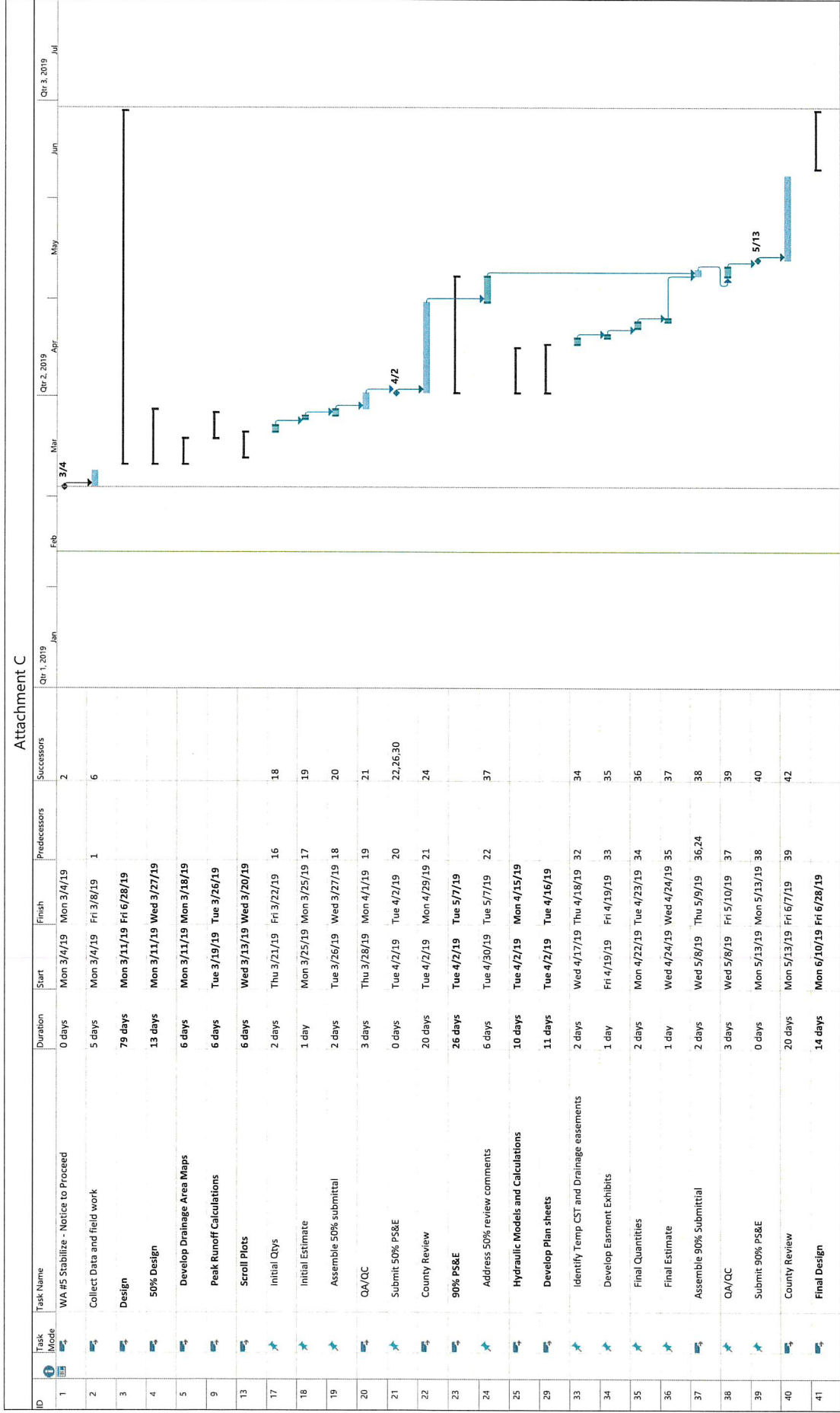
Final Submittal:

- 2 paper copies of 11" x 17" Plan Sheets
- 2 paper copies temporary construction and drainage easement exhibits on 8.5 x 11
- Quantity summary
- Engineer's internal QA/QC marked up set
- Electronic copy of submittal documents in PDF format on CD

**Attachment C - Work Schedule**

Please see next page.

Attachment C



Project: WILCO Small Drainage & Roadway Design WA # 5  
 Date: Tue 2/12/19

Task Summary: Manual Task, Duration-only, Manual Summary Rollup, Manual Summary

Task Legend: Task (blue bar), Split (dotted bar), Milestone (diamond), Summary (bracket)

Task Legend: Start-only (light blue bar), Finish-only (light blue bar), External Task (light blue bar), External Milestone (diamond)

Task Legend: Deadline (green arrow), Progress (blue bar), Manual Progress (light blue bar)

## **Attachment D - Fee Schedule**

Please see next pages.

Williamson County Small Drainage & Roadway Design (1711-206) - WAO3  
 Attachment D  
 Stabilize Projects  
 Phillip Lane – from CR 201 to East End (4,800')  
 CR 426 – from CR 427 to County Line (10,000')  
 CR 331 – from CR 329 to FM 972 (7,000')

| Task Description  | Project Principal  | Senior Project Manager | Project Manager    | Hydraulic Engineer | Senior Engineer | Project Engineer   | Engineer In Training | Senior Engineering Technician | Engineering Technician | Project Administrator | Clerical         | Total Labor Hours & Costs |
|---|--------------------|------------------------|--------------------|--------------------|-----------------|--------------------|----------------------|-------------------------------|------------------------|-----------------------|------------------|---------------------------|
| <b>Task 1: Project Management</b>                           |                    |                        |                    |                    |                 |                    |                      |                               |                        |                       |                  |                           |
| 1.1 Progress Review Meetings (3 meetings: 50%, 90% & Final) |                    |                        | 9                  | 9                  |                 | 9                  |                      |                               |                        |                       | 3                | 30                        |
| 1.2 Invoicing and Progress Reports (4 months)               | 4                  |                        | 4                  |                    |                 |                    |                      |                               |                        | 4                     |                  | 12                        |
| 1.3 Subconsultants  |                    |                        |                    |                    |                 |                    |                      |                               |                        |                       |                  | 0                         |
| 1.4 QA/QC of Deliverables at 50%, 90% and FINAL             |                    |                        | 9                  | 6                  |                 |                    |                      |                               |                        |                       |                  | 15                        |
| Labor Hours Subtotal  | 4                  | 0                      | 22                 | 15                 | 0               | 9                  | 0                    | 0                             | 0                      | 4                     | 3                | 57                        |
| Contract Labor Rate Per Hour                                | \$ 265.00          | \$ 244.00              | \$ 230.00          | \$ 210.00          | \$ 205.00       | \$ 160.00          | \$ 115.00            | \$ 133.00                     | \$ 92.00               | \$ 104.00             | \$ 85.00         |                           |
| <b>Labor Costs Subtotal</b>                                 | <b>\$ 1,060.00</b> | <b>\$ -</b>            | <b>\$ 5,060.00</b> | <b>\$ 3,150.00</b> | <b>\$ -</b>     | <b>\$ 1,440.00</b> | <b>\$ -</b>          | <b>\$ -</b>                   | <b>\$ -</b>            | <b>\$ 416.00</b>      | <b>\$ 255.00</b> | <b>\$ 11,381.00</b>       |

| Task Description                              | Project Principal | Senior Project Manager | Project Manager | Hydraulic Engineer | Senior Engineer | Project Engineer | Engineer In Training | Senior Engineering Technician | Engineering Technician | Project Administrator | Clerical    | Total Labor Hours & Costs |
|---|-------------------|------------------------|-----------------|--------------------|-----------------|------------------|----------------------|-------------------------------|------------------------|-----------------------|-------------|---------------------------|
| <b>Task 2: Topographic and R.O.W. Surveys</b> |                   |                        |                 |                    |                 |                  |                      |                               |                        |                       |             |                           |
| N/A   |                   |                        |                 |                    |                 |                  |                      |                               |                        |                       |             | 0                         |
| Labor Hours Subtotal                          | 0                 | 0                      | 0               | 0                  | 0               | 0                | 0                    | 0                             | 0                      | 0                     | 0           | 0                         |
| Contract Labor Rate Per Hour                  | \$ 265.00         | \$ 244.00              | \$ 230.00       | \$ 210.00          | \$ 205.00       | \$ 160.00        | \$ 115.00            | \$ 133.00                     | \$ 92.00               | \$ 104.00             | \$ 85.00    |                           |
| <b>Labor Costs Subtotal</b>                   | <b>\$ -</b>       | <b>\$ -</b>            | <b>\$ -</b>     | <b>\$ -</b>        | <b>\$ -</b>     | <b>\$ -</b>      | <b>\$ -</b>          | <b>\$ -</b>                   | <b>\$ -</b>            | <b>\$ -</b>           | <b>\$ -</b> | <b>\$ -</b>               |

| Task Description  | Project Principal | Senior Project Manager | Project Manager    | Hydraulic Engineer | Senior Engineer | Project Engineer | Engineer In Training | Senior Engineering Technician | Engineering Technician | Project Administrator | Clerical    | Total Labor Hours & Costs |
|---|-------------------|------------------------|--------------------|--------------------|-----------------|------------------|----------------------|-------------------------------|------------------------|-----------------------|-------------|---------------------------|
| <b>Task 3: Preliminary Engineering</b>  |                   |                        |                    |                    |                 |                  |                      |                               |                        |                       |             |                           |
| 3.1 Site Visit & Field Recon  |                   |                        |                    | 8                  |                 |                  | 8                    |                               |                        |                       |             | 16                        |
| 3.2 Delineate Drainage Areas Phillip Lane   |                   |                        | 1                  | 3                  |                 |                  | 16                   |                               |                        |                       |             | 20                        |
| CR 426  |                   |                        | 1                  | 3                  |                 |                  | 16                   |                               |                        |                       |             | 20                        |
| CR 331  |                   |                        | 1                  | 3                  |                 |                  | 16                   |                               |                        |                       |             | 20                        |
| 3.3 Calculate Peak Stormwater Runoff Rates  |                   |                        | 1                  | 8                  |                 |                  | 40                   |                               |                        |                       |             | 49                        |
| 3.4 Scroll plot showing drainage area boundaries, time of concentration paths, and areas (Ac) |                   |                        | 1                  | 3                  |                 |                  |                      |                               |                        |                       |             | 20                        |
| Phillip Lane  |                   |                        | 1                  | 3                  |                 |                  |                      |                               |                        |                       |             | 20                        |
| CR 426  |                   |                        | 1                  | 3                  |                 |                  |                      |                               |                        |                       |             | 20                        |
| CR 331  |                   |                        | 1                  | 3                  |                 |                  |                      |                               |                        |                       |             | 20                        |
| 3.5 Drainage Memo   |                   |                        | 1                  | 4                  |                 |                  | 4                    |                               |                        |                       |             | 9                         |
| Labor Hours Subtotal  | 0                 | 0                      | 8                  | 38                 | 0               | 0                | 100                  | 0                             | 52                     | 0                     | 0           | 198                       |
| Contract Labor Rate Per Hour  | \$ 265.00         | \$ 244.00              | \$ 230.00          | \$ 210.00          | \$ 205.00       | \$ 160.00        | \$ 115.00            | \$ 133.00                     | \$ 92.00               | \$ 104.00             | \$ 85.00    |                           |
| <b>Labor Costs Subtotal</b>   | <b>\$ -</b>       | <b>\$ -</b>            | <b>\$ 1,840.00</b> | <b>\$ 7,980.00</b> | <b>\$ -</b>     | <b>\$ -</b>      | <b>\$ 11,500.00</b>  | <b>\$ -</b>                   | <b>\$ 4,784.00</b>     | <b>\$ -</b>           | <b>\$ -</b> | <b>\$ 26,104.00</b>       |

| Task Description                          | Project Principal | Senior Project Manager | Project Manager | Hydraulic Engineer | Senior Engineer | Project Engineer | Engineer -In- Training | Senior Engineering Technician | Engineering Technician | Project Administrator | Clerical    | Total Labor Hours & Costs |
|---|-------------------|------------------------|-----------------|--------------------|-----------------|------------------|------------------------|-------------------------------|------------------------|-----------------------|-------------|---------------------------|
| <b>Task 4: Geotechnical Investigation</b> |                   |                        |                 |                    |                 |                  |                        |                               |                        |                       |             |                           |
| N/A                                       |                   |                        |                 |                    |                 |                  |                        |                               |                        |                       |             | 0                         |
| Labor Hours Subtotal                      | 0                 | 0                      | 0               | 0                  | 0               | 0                | 0                      | 0                             | 0                      | 0                     | 0           | 0                         |
| Contract Labor Rate Per Hour              | \$ 265.00         | \$ 244.00              | \$ 230.00       | \$ 210.00          | \$ 205.00       | \$ 160.00        | \$ 115.00              | \$ 133.00                     | \$ 92.00               | \$ 104.00             | \$ 85.00    | \$ -                      |
| <b>Labor Costs Subtotal</b>               | <b>\$ -</b>       | <b>\$ -</b>            | <b>\$ -</b>     | <b>\$ -</b>        | <b>\$ -</b>     | <b>\$ -</b>      | <b>\$ -</b>            | <b>\$ -</b>                   | <b>\$ -</b>            | <b>\$ -</b>           | <b>\$ -</b> | <b>\$ -</b>               |

| Task Description                     | Project Principal | Senior Project Manager | Project Manager | Hydraulic Engineer | Senior Engineer | Project Engineer | Engineer -In- Training | Senior Engineering Technician | Engineering Technician | Project Administrator | Clerical    | Total Labor Hours & Costs |
|--------------------------------------|-------------------|------------------------|-----------------|--------------------|-----------------|------------------|------------------------|-------------------------------|------------------------|-----------------------|-------------|---------------------------|
| <b>Task 5: Environmental Studies</b> |                   |                        |                 |                    |                 |                  |                        |                               |                        |                       |             |                           |
| N/A                                  |                   |                        |                 |                    |                 |                  |                        |                               |                        |                       |             | 0                         |
| Labor Hours Subtotal                 | 0                 | 0                      | 0               | 0                  | 0               | 0                | 0                      | 0                             | 0                      | 0                     | 0           | 0                         |
| Contract Labor Rate Per Hour         | \$ 265.00         | \$ 244.00              | \$ 230.00       | \$ 210.00          | \$ 205.00       | \$ 160.00        | \$ 115.00              | \$ 133.00                     | \$ 92.00               | \$ 104.00             | \$ 85.00    | \$ -                      |
| <b>Labor Costs Subtotal</b>          | <b>\$ -</b>       | <b>\$ -</b>            | <b>\$ -</b>     | <b>\$ -</b>        | <b>\$ -</b>     | <b>\$ -</b>      | <b>\$ -</b>            | <b>\$ -</b>                   | <b>\$ -</b>            | <b>\$ -</b>           | <b>\$ -</b> | <b>\$ -</b>               |

| Task Description                    | Project Principal | Senior Project Manager | Project Manager | Hydraulic Engineer | Senior Engineer | Project Engineer | Engineer -In- Training | Senior Engineering Technician | Engineering Technician | Project Administrator | Clerical    | Total Labor Hours & Costs |
|-------------------------------------|-------------------|------------------------|-----------------|--------------------|-----------------|------------------|------------------------|-------------------------------|------------------------|-----------------------|-------------|---------------------------|
| <b>Task 6: Utility Coordination</b> |                   |                        |                 |                    |                 |                  |                        |                               |                        |                       |             |                           |
| N/A                                 |                   |                        |                 |                    |                 |                  |                        |                               |                        |                       |             | 0                         |
| Labor Hours Subtotal                | 0                 | 0                      | 0               | 0                  | 0               | 0                | 0                      | 0                             | 0                      | 0                     | 0           | 0                         |
| Contract Labor Rate Per Hour        | \$ 265.00         | \$ 244.00              | \$ 230.00       | \$ 210.00          | \$ 205.00       | \$ 160.00        | \$ 115.00              | \$ 133.00                     | \$ 92.00               | \$ 104.00             | \$ 85.00    | \$ -                      |
| <b>Labor Costs Subtotal</b>         | <b>\$ -</b>       | <b>\$ -</b>            | <b>\$ -</b>     | <b>\$ -</b>        | <b>\$ -</b>     | <b>\$ -</b>      | <b>\$ -</b>            | <b>\$ -</b>                   | <b>\$ -</b>            | <b>\$ -</b>           | <b>\$ -</b> | <b>\$ -</b>               |

| Task Description                 | Project Principal | Senior Project Manager | Project Manager | Hydraulic Engineer | Senior Engineer | Project Engineer | Engineer -In- Training | Senior Engineering Technician | Engineering Technician | Project Administrator | Clerical    | Total Labor Hours & Costs |
|----------------------------------|-------------------|------------------------|-----------------|--------------------|-----------------|------------------|------------------------|-------------------------------|------------------------|-----------------------|-------------|---------------------------|
| <b>Task 7: FEMA Coordination</b> |                   |                        |                 |                    |                 |                  |                        |                               |                        |                       |             |                           |
| N/A                              |                   |                        |                 |                    |                 |                  |                        |                               |                        |                       |             | 0                         |
| Labor Hours Subtotal             | 0                 | 0                      | 0               | 0                  | 0               | 0                | 0                      | 0                             | 0                      | 0                     | 0           | 0                         |
| Contract Labor Rate Per Hour     | \$ 265.00         | \$ 244.00              | \$ 230.00       | \$ 210.00          | \$ 205.00       | \$ 160.00        | \$ 115.00              | \$ 133.00                     | \$ 92.00               | \$ 104.00             | \$ 85.00    | \$ -                      |
| <b>Labor Costs Subtotal</b>      | <b>\$ -</b>       | <b>\$ -</b>            | <b>\$ -</b>     | <b>\$ -</b>        | <b>\$ -</b>     | <b>\$ -</b>      | <b>\$ -</b>            | <b>\$ -</b>                   | <b>\$ -</b>            | <b>\$ -</b>           | <b>\$ -</b> | <b>\$ -</b>               |

| Task Description   | Project Principal | Senior Project Manager | Project Manager | Hydraulic Engineer | Senior Engineer | Project Engineer | Engineer - In-Training | Senior Engineering Technician | Engineering Technician | Project Administrator | Clerical | Total Labor Hours & Costs |
|--|-------------------|------------------------|-----------------|--------------------|-----------------|------------------|------------------------|-------------------------------|------------------------|-----------------------|----------|---------------------------|
| <b>Task 8: Final Engineering</b>   |                   |                        |                 |                    |                 |                  |                        |                               |                        |                       |          |                           |
| 8.1 Plan & Plan sheets for parallel and cross drainage culverts (1"=50') |                   |                        |                 |                    |                 |                  |                        |                               |                        |                       |          |                           |
| Phillip Lane (5 Sheets)  |                   |                        | 1               | 2                  |                 | 5                |                        |                               | 30                     |                       |          | 38                        |
| CR 426 (10 Sheets)   |                   |                        | 2               | 5                  |                 | 10               |                        |                               | 60                     |                       |          | 77                        |
| CR 331 (7 Sheets)  |                   |                        | 1               | 2                  |                 | 7                |                        |                               | 30                     |                       |          | 40                        |
| 8.2 Develop Hydraulic Models and Calculations                            |                   |                        |                 |                    |                 |                  |                        |                               |                        |                       |          |                           |
| Phillip Lane   |                   |                        | 1               | 8                  |                 |                  | 20                     |                               |                        |                       |          | 29                        |
| CR 426   |                   |                        | 2               | 8                  |                 |                  | 40                     |                               |                        |                       |          | 50                        |
| CR 331   |                   |                        | 1               | 8                  |                 |                  | 20                     |                               |                        |                       |          | 29                        |
| 8.3 Quantity Summary   |                   |                        |                 |                    |                 |                  |                        |                               |                        |                       |          |                           |
| Phillip Lane   |                   |                        | 1               |                    |                 | 2                |                        |                               | 6                      |                       |          | 9                         |
| CR 426   |                   |                        | 1               |                    |                 | 2                |                        |                               | 8                      |                       |          | 11                        |
| CR 331   |                   |                        | 1               |                    |                 | 2                |                        |                               | 6                      |                       |          | 9                         |
| 8.4 Temporary Construction and Drainage Easement Exhibits                |                   |                        |                 |                    |                 |                  |                        |                               |                        |                       |          |                           |
|  |                   |                        | 1               |                    |                 | 1                |                        |                               | 8                      |                       |          | 10                        |
| <b>Labor Hours Subtotal</b>  | 0                 | 0                      | 12              | 33                 | 0               | 29               | 80                     | 0                             | 148                    | 0                     | 0        | 302                       |
| <b>Contract Labor Rate Per Hour</b>                                      | \$ 265.00         | \$ 244.00              | \$ 230.00       | \$ 210.00          | \$ 205.00       | \$ 160.00        | \$ 115.00              | \$ 133.00                     | \$ 92.00               | \$ 104.00             | \$ 85.00 |                           |
| <b>Labor Costs Subtotal</b>  | \$ -              | \$ -                   | \$ 2,760.00     | \$ 6,930.00        | \$ -            | \$ 4,640.00      | \$ 9,200.00            | \$ -                          | \$ 13,616.00           | \$ -                  | \$ -     | \$ 37,146.00              |

| Task Description                      | Project Principal | Senior Project Manager | Project Manager | Hydraulic Engineer | Senior Engineer | Project Engineer | Engineer - In-Training | Senior Engineering Technician | Engineering Technician | Project Administrator | Clerical | Total Labor Hours & Costs |
|---------------------------------------|-------------------|------------------------|-----------------|--------------------|-----------------|------------------|------------------------|-------------------------------|------------------------|-----------------------|----------|---------------------------|
| <b>Task 9: Bidding Phase Services</b> |                   |                        |                 |                    |                 |                  |                        |                               |                        |                       |          |                           |
| N/A                                   |                   |                        |                 |                    |                 |                  |                        |                               |                        |                       |          | 0                         |
| <b>Labor Hours Subtotal</b>           | 0                 | 0                      | 0               | 0                  | 0               | 0                | 0                      | 0                             | 0                      | 0                     | 0        | 0                         |
| <b>Contract Labor Rate Per Hour</b>   | \$ 265.00         | \$ 244.00              | \$ 230.00       | \$ 210.00          | \$ 205.00       | \$ 160.00        | \$ 115.00              | \$ 133.00                     | \$ 92.00               | \$ 104.00             | \$ 85.00 |                           |
| <b>Labor Costs Subtotal</b>           | \$ -              | \$ -                   | \$ -            | \$ -               | \$ -            | \$ -             | \$ -                   | \$ -                          | \$ -                   | \$ -                  | \$ -     | \$ -                      |

| Task Description                            | Project Principal | Senior Project Manager | Project Manager | Hydraulic Engineer | Senior Engineer | Project Engineer | Engineer - In-Training | Senior Engineering Technician | Engineering Technician | Project Administrator | Clerical | Total Labor Hours & Costs |
|---|-------------------|------------------------|-----------------|--------------------|-----------------|------------------|------------------------|-------------------------------|------------------------|-----------------------|----------|---------------------------|
| <b>Task 10: Construction Phase Services</b> |                   |                        |                 |                    |                 |                  |                        |                               |                        |                       |          |                           |
| N/A   |                   |                        |                 |                    |                 |                  |                        |                               |                        |                       |          | 0                         |
| <b>Labor Hours Subtotal</b>                 | 0                 | 0                      | 0               | 0                  | 0               | 0                | 0                      | 0                             | 0                      | 0                     | 0        | 0                         |
| <b>Contract Labor Rate Per Hour</b>         | \$ 265.00         | \$ 244.00              | \$ 230.00       | \$ 210.00          | \$ 205.00       | \$ 160.00        | \$ 115.00              | \$ 133.00                     | \$ 92.00               | \$ 104.00             | \$ 85.00 |                           |
| <b>Labor Costs Subtotal</b>                 | \$ -              | \$ -                   | \$ -            | \$ -               | \$ -            | \$ -             | \$ -                   | \$ -                          | \$ -                   | \$ -                  | \$ -     | \$ -                      |

| DESCRIPTION                            | TOTAL MH BY TASK | TOTAL COST BY TASK  |
|--|------------------|---------------------|
| Task 1: Project Management             | 57               | \$ 11,381.00        |
| Task 2: Topographic and R.O.W. Surveys | 0                | \$ -                |
| Task 3: Preliminary Engineering        | 198              | \$ 26,104.00        |
| Task 4: Geotechnical Investigation     | 0                | \$ -                |
| Task 5: Environmental Studies          | 0                | \$ -                |
| Task 6: Utility Coordination           | 0                | \$ -                |
| Task 7: FEMA Coordination              | 0                | \$ -                |
| Task 8: Final Engineering              | 302              | \$ 37,146.00        |
| Task 9: Bidding Phase Services         | 0                | \$ -                |
| Task 10: Construction Phase Services   | 0                | \$ -                |
| <b>SUBTOTAL LABOR COST</b>             | <b>557</b>       | <b>\$ 74,631.00</b> |

| DESCRIPTION                      | Unit        | Cost/Unit | Quantity | Total Cost         |
|----------------------------------|-------------|-----------|----------|--------------------|
| Mileage                          | mile        | \$ -      |          | \$ -               |
| Standard Postage - Letter        | each        | \$ -      |          | \$ -               |
| Certified Letter Return Receipt  | each        | \$ -      |          | \$ -               |
| Overnight Mail - Letter Size     | each        | \$ 25.00  |          | \$ -               |
| Overnight Mail - Oversized Box   | each        | \$ 30.00  |          | \$ -               |
| Courier Services                 | each        | \$ 50.00  |          | \$ -               |
| Photocopies B/W (8 1/2" x 11")   | each        | \$ 0.25   | 48       | \$ 12.00           |
| Photocopies B/W (11" x 17")      | each        | \$ 0.50   | 148      | \$ 74.00           |
| Photocopies Color (8 1/2" x 11") | each        | \$ 1.00   |          | \$ -               |
| Photocopies Color (11" x 17")    | each        | \$ 2.00   |          | \$ -               |
| Plots (B/W on Bond)              | square foot | \$ 6.00   |          | \$ -               |
| Plots (Color on Bond)            | square foot | \$ 8.00   | 180      | \$ 1,440.00        |
| CDs                              | each        | \$ 0.50   | 4        | \$ 2.00            |
| <b>SUBTOTAL DIRECT EXPENSES</b>  |             |           |          | <b>\$ 1,528.00</b> |

|                         |                     |
|-------------------------|---------------------|
| <b>SUMMARY</b>          |                     |
| SUBTOTAL LABOR COST     | \$ 74,631.00        |
| SUBTOTAL DIRECT EXPENSE | \$ 1,528.00         |
| <b>TOTAL</b>            | <b>\$ 76,159.00</b> |