

Central Texas Regional Mobility Authority Update to Williamson County Commissioners Court

Mike Heiligenstein, Executive Director

April 23, 2019



**CENTRAL TEXAS REGIONAL
MOBILITY AUTHORITY**

2018 Annual Report and Financial Statements

– DRIVEN TO DELIVER –

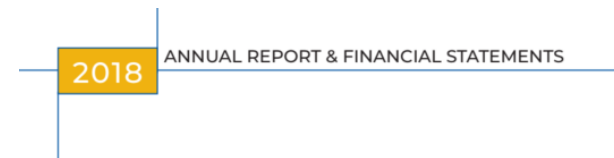


CENTRAL TEXAS REGIONAL
MOBILITY AUTHORITY



Annual Report

- **Our yearly “look back”** on the agency and its performance against the Strategic Plan
- **Features** key projects, initiatives and summaries of financial statements
- **Required** as part of the Texas Administrative Code



What drives **you**, drives **us**.

Distribution

- **Distributed** digitally to an extensive list of elected officials, key stakeholders and agency e-newsletter subscribers totaling over 1,000+
- **Print copies** available upon request and provided to investors
- **Available** on website



The screenshot shows the website header with the Central Texas Regional Mobility Authority logo and name. Below the header is a blue banner with the text "2018 Annual Report". The main content area features a large image of a highway interchange at dusk with the text "DRIVEN TO DELIVER" overlaid. Below the image is a white box with the text "2018 Annual Report Now Available". The page includes a "Dear Friends:" salutation, a paragraph reflecting on the past year's milestones, a paragraph detailing current projects (183 South, SH 45SW, 290/130 Flyovers, and 183A Phase III), and a closing paragraph with a link to the annual report and financial statements.

CENTRAL TEXAS REGIONAL MOBILITY AUTHORITY

Click here to view this in your browser

2018 Annual Report

DRIVEN TO DELIVER

2018 Annual Report Now Available

Dear Friends:

We're proud to reflect on the past year's milestones in our 2018 Annual Report, *Driven to Deliver*. Through the delivery of customer-centric, reliable, and forward-thinking mobility solutions, we remain committed to preserving and enhancing quality of life in the Central Texas region.

With the 183 South project more than halfway complete, and the SH 45SW project just months from opening, we've made great strides toward realizing our mission of greater mobility for the communities we serve. We're also planning for additional congestion relief as we prepare to break ground on the 290/130 Flyovers project, and future growth by accelerating the development the 183A Phase III northern extension.

Check out our annual report for a look back at the momentum driving us forward and see the direction where we're headed in 2019.

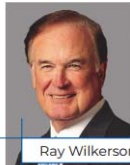
[Click here to view our 2018 Annual Report & Financial Statements](#)





Accountable, Visionary Leadership

FROM THE DESK OF OUR CHAIRMAN Driving Central Texas Toward New Beginnings



Ray Wilkerson
Chairman

We consider it a **privilege** to be behind the wheel when it comes to **improving mobility** for the communities we serve.

With 2018 in our rearview mirror, we reflect on the past year's milestones and look toward the challenges and opportunities of tomorrow. We remain committed to raising the bar on what it means to preserve and enhance quality of life through the delivery of customer-centric, reliable and forward-thinking mobility solutions.

Our foundation of consistent delivery gives way to new beginnings. We are on the verge of providing the residents of southwest Travis and northern Hays counties a brand-new roadway as we put the final finishes on the SH 455W project. This long-awaited bypass route will bring commuters the benefit of choice, allowing them to avoid congested local roads while enhancing safety for neighborhoods subject to cut-through traffic. We consider it a privilege to be behind the wheel when it comes to improving mobility for the communities we serve.

We're poised to continue bringing our vision of greater mobility to life, and we've only just begun. As we break ground on the 290/130 Flyovers project, we're establishing new connections and delivering on the call for choice and reliability. Our neighbors on the east side are beginning to see improvements take shape as we surpass the halfway mark on the 183 South project. In Central Austin, MoPac drivers are getting where they want to go reliably with the new Express Lane.

Keeping our finger on the pulse of tomorrow's needs we remain driven. Driven to remain a pillar of the transportation community. Driven to pioneer new ways of improving mobility. Driven to deliver solutions. Driven by you.

BOARD OF DIRECTORS

2018 BOARD OF DIRECTORS

We are governed by a seven-member board of directors responsible for setting policies, identifying priority projects, and ensuring the agency is operated in an efficient and effective manner. Our volunteer members are appointed by our founding counties and serve two-year terms. Our chairman is appointed by the governor.



Ray A. Wilkerson
Chairman
Gubernatorial Appointee, 2009



Nikelle S. Meade
Vice-Chair
Travis County Appointee, 2012



David Singleton
Board Treasurer
Williamson County Appointee, 2003



Mark Ayotte
Board Secretary
Williamson County Appointee, 2017



David B. Armbrust
Board Member
Travis County Appointee, 2012



John Langmore
Board Member
Travis County Appointee, 2018



Frank Leffingwell
Board Member
Williamson County Appointee, 2018



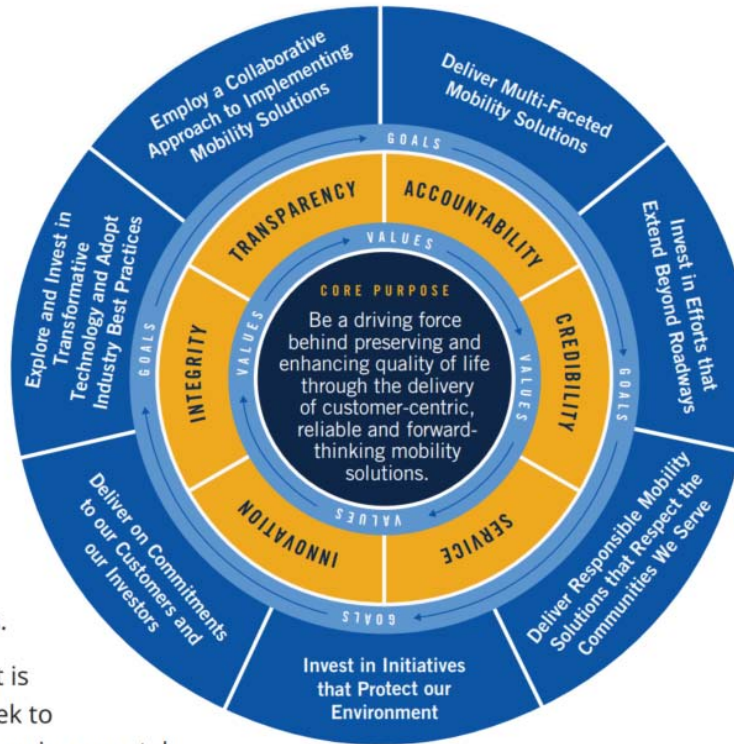
Mike Heiligenstein
Executive Director, 2003

- Showcase our Chairman and Board of Directors



Strategic Plan Alignment

- Demonstrate how we meet the vision of our Strategic Plan



OUR CORE VALUES

TRANSPARENCY | We are committed to open, honest and fair business practices; visibility into our processes; and accessibility of information to the general public.

ACCOUNTABILITY | We are fiscally responsible and follow through on commitments to our founding counties, investors, customers, constituents, and partners.

CREDIBILITY | We work to earn and sustain public trust through dependable public service, two-way communication, partner collaboration, and fair and appropriate solutions.

SERVICE | We provide customer service that is defined by efficiency and responsiveness. We seek to improve quality of life for our users by acting as environmental stewards and supporting our community.

INTEGRITY | We are committed to honest communications, transparent transactions, ethical decisions, and forthright behavior.

INNOVATION | We have an entrepreneurial spirit that nurtures new ideas and embraces opportunities to implement transformative technology.

Funding Approaches

- Drilling down into transportation funding challenges and opportunities

LEVERAGING LIMITED FUNDING TO CREATE REAL SOLUTIONS



INVESTING IN YOU

Since our inception in 2002, the Mobility Authority has transformed a regional investment of \$518 million into nearly \$2 billion in added-capacity infrastructure improvements.



Moving forward, we anticipate leveraging an additional \$184 million investment into another \$1.4 billion in new infrastructure.



LEVERAGING LIMITED FUNDING TO CREATE REAL SOLUTIONS

Public dollars for transportation improvements are in short supply, yet our needs for mobility improvements are greater than ever. Rather than waiting decades, or longer, for public funding to become available, we use a flexible financing approach that allows us to build out our infrastructure with the added capacity we need today. The revenue we generate is reinvested right here in Central Texas to help expand our regional infrastructure network.



Driving the economy

171%



From 2007 to 2018, property values along the 183A corridor increased by over \$1.2 billion, a 171 percent growth.



Austin Community College - San Gabriel Campus opened in 2018 just west of 183A in Leander.



St. David's Emergency Center in Leander opened in 2018 on 183A.

#7

Realtor.com ranked the city of Manor the #7 fastest-growing zip code in the U.S. in 2018.



As a traffic generator for 290 Toll, the city of Elgin's population is expected to triple in the next 10 years.



Austin-Bergstrom International Airport (ABIA) is seeing significant growth with a \$350 million terminal expansion project to add nine more gates. The expansion project will increase the airport's capacity from 11 million to 15 million passengers annually. A multi-billion dollar expansion is planned to begin operation by 2040.



Grocer H-E-B purchased 17.2 acres near ABIA on the 71 Toll Lane corridor. There are currently no major grocery stores in the area.



Project Tour

MAKING OUR OWN LANE

PROJECT TOUR:
UNDER CONSTRUCTION

We're picking up speed as we drive towards the finish line on our projects under construction.



PAVING A NEW WAY FOR REGIONAL COMMUTERS

IMPROVEMENTS TAKE SHAPE IN THE REGION





MoPac Express Lane Performance



LIFE IN THE FAST LANE

With average speeds generally above 50 miles per hour, drivers choosing the Express Lane during morning and afternoon rush hours...



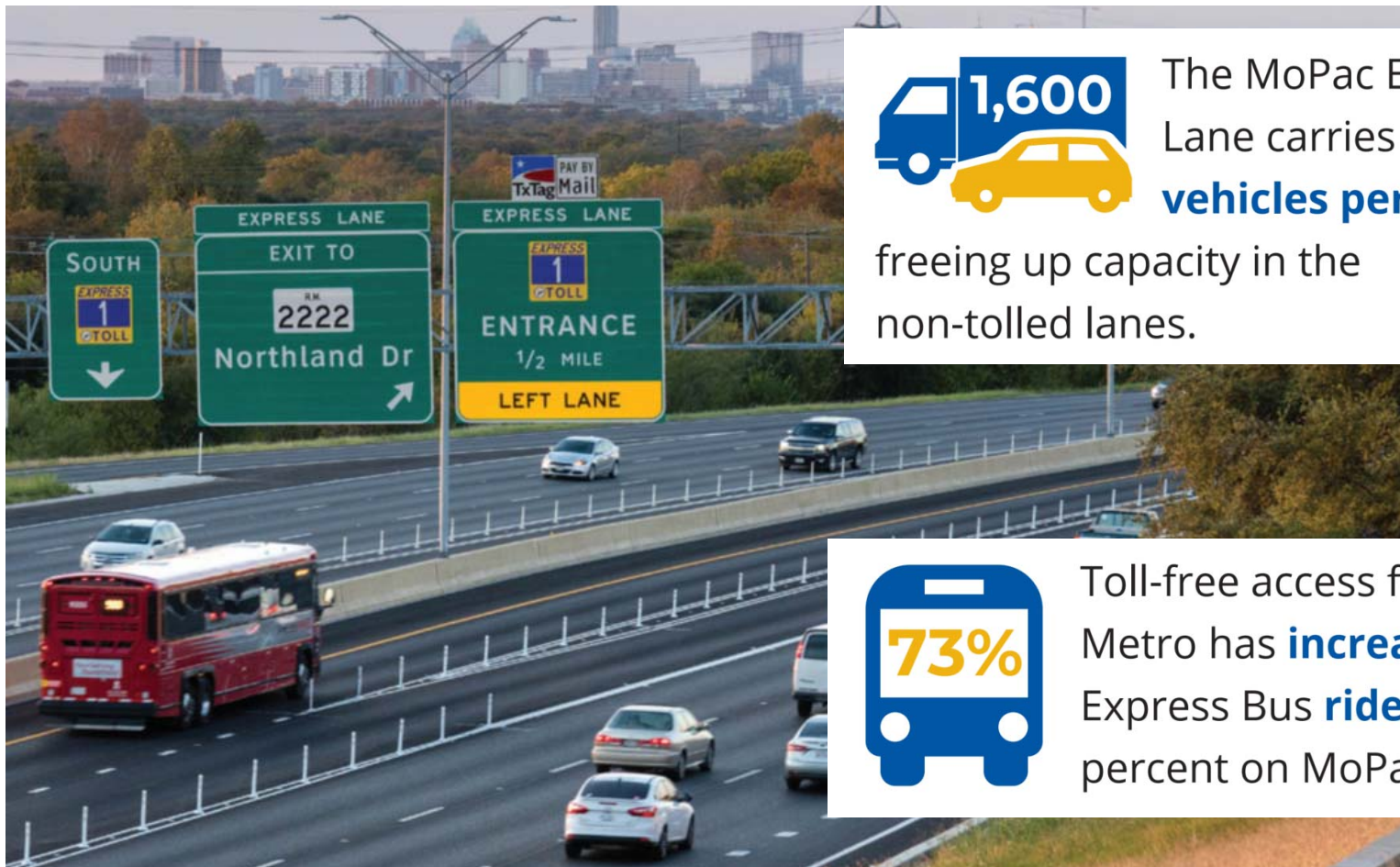
move up to **21 miles per hour** faster



save up to **25 minutes** in travel time



MoPac Express Lane Performance



The MoPac Express Lane carries up to **1,600 vehicles per hour**, freeing up capacity in the non-tolled lanes.



Toll-free access for Capital Metro has **increased** Express Bus **ridership** by 73 percent on MoPac.



MOVING ON UP

The 183 North Express Lanes

- Final design of **two new express lanes** and a **fourth general-purpose lane** in each direction along **US 183** from MoPac north to SH 45N
- Bringing **reliable travel** to Williamson County and northern Travis County





2018 Financial Statements

- The Mobility Authority's current total assets grew to nearly **\$2.168 Billion**
- The Mobility Authority experienced nearly 20 percent growth in operating revenues year over year
- The strength of the Mobility Authority's financials and road performance earned rating agency senior debt upgrades by Moody's and S&P.
- Current Moody's ratings are Baa1 for senior lien bonds and Baa2 for subordinate lien bonds. Current S&P ratings are A- for senior lien and subordinate lien revenue bonds.

2018
FINANCIALS

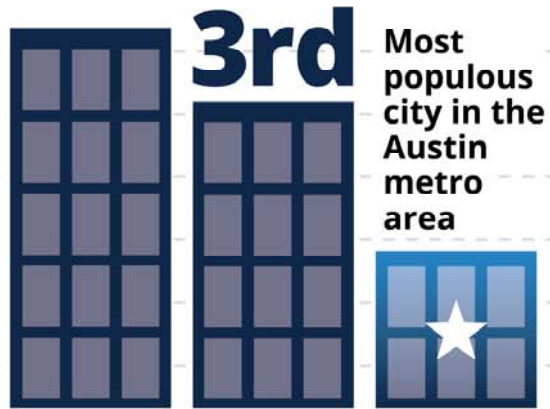
WHAT DRIVES *YOU*,
DRIVES *US*.





Williamson County Community Growth

CEDAR PARK

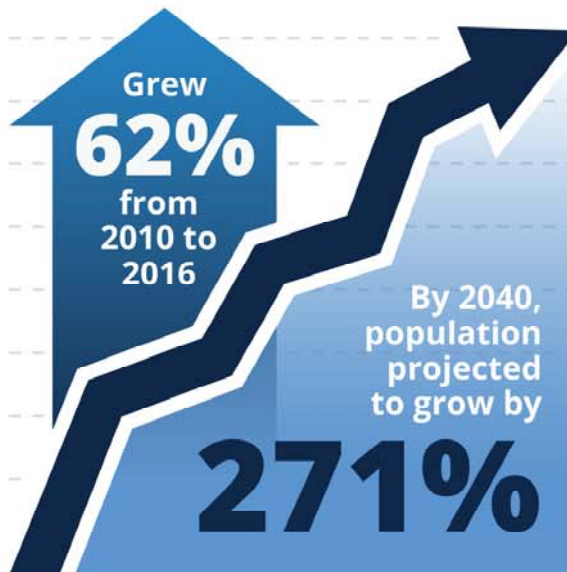


Approximate population growth from 2010 through 2016



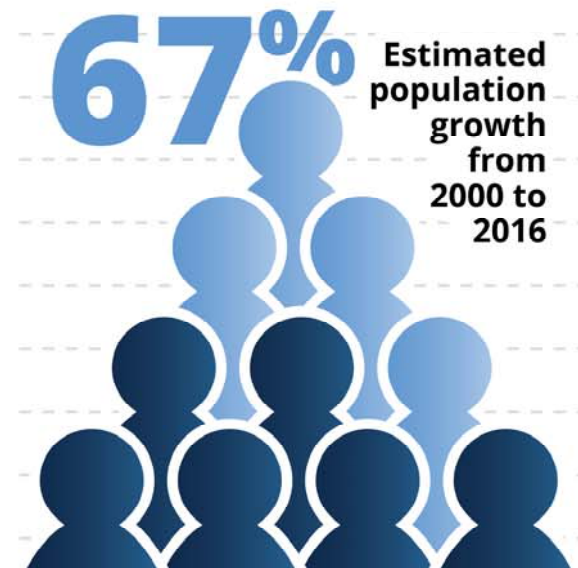
Source: US Census Bureau

LEANDER



Source: US Census Bureau, Texas Water Development Board

LIBERTY HILL

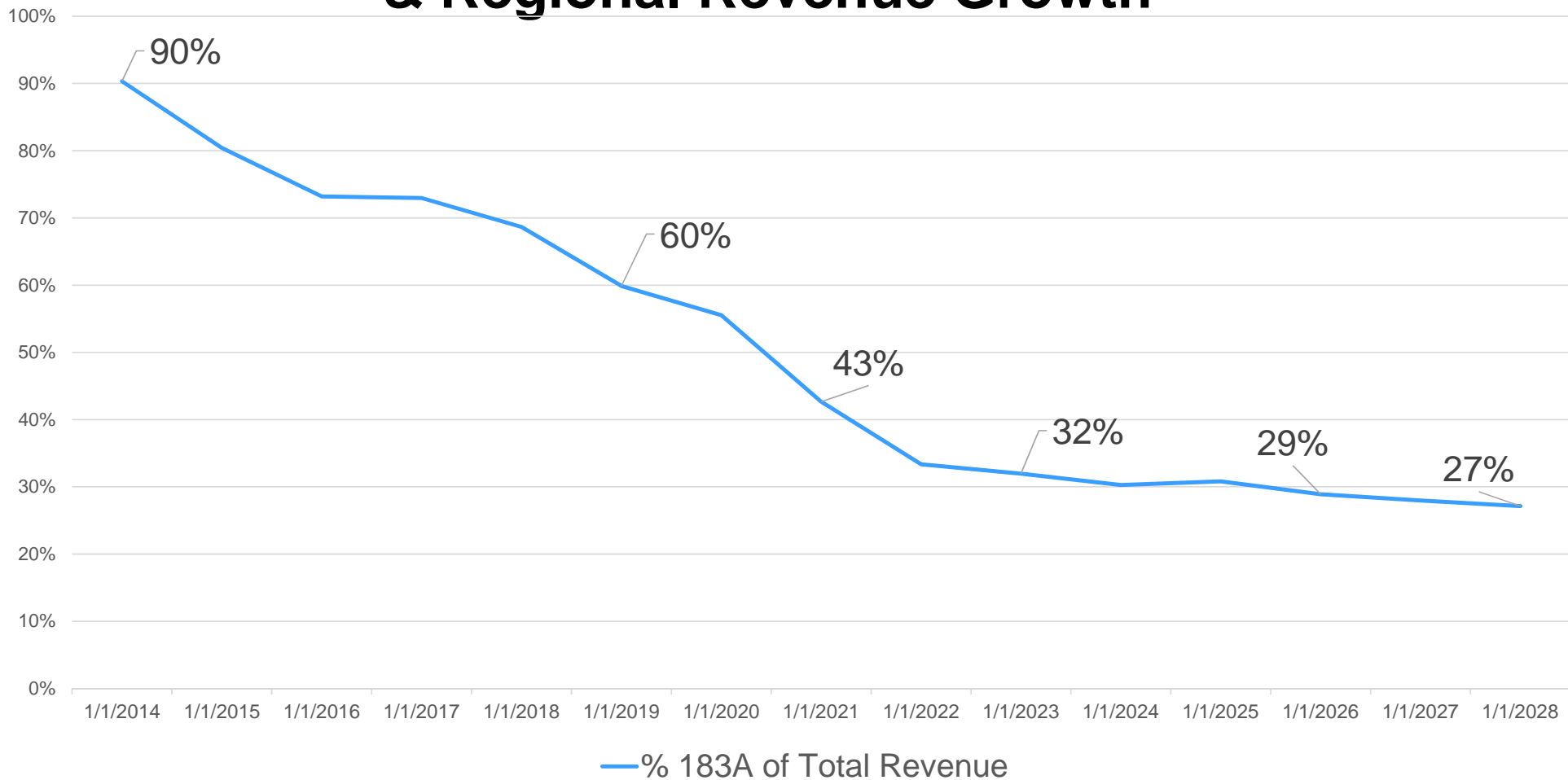


Source: City of Liberty Hill

Slide 15

HD4 This slide is intended to be a lead in for both presentations. It is shown in both presentations for now for context, but should not be included in both when the presentations are compiled
Huter, David, 4/4/2019

CTRMA Revenue - % from 183A Phase I & II & Regional Revenue Growth



183A Park Street ML Plaza – SB AM Peak



Major Origins

ORIGINS	
Municipality	Percentage
Leander	54%
Cedar Park	18%
Liberty Hill	9%
Georgetown	4%
Round Rock	3%
Out of State	2%
Other	10%
Total	100%

Major Destinations

DESTINATIONS	
Municipality	Percentage
Austin	78%
Cedar Park	7%
Round Rock	6%
Pflugerville	3%
Hutto	1%
Other	5%
Total	100%

Note: Municipal boundaries don't always align with US Census Block Groups.

183A Park Street ML Plaza – NB PM Peak



Major Origins

ORIGINS	
Municipality	Percentage
Austin	78%
Cedar Park	9%
Round Rock	6%
Pflugerville	2%
Other	5%
Total	100%

Major Destinations

DESTINATIONS	
Municipality	Percentage
Leander	40%
Cedar Park	35%
Liberty Hill	6%
Georgetown	3%
Round Rock	3%
Out of State	2%
Other	11%
Total	100%

Note: Municipal boundaries don't always align with US Census Block Groups.



MoPac North of Parmer – SB AM Peak

Major Origins

ORIGINS		
Municipality	Percentage	
	to Mainline	to Frontage Rd
Round Rock	38%	25%
Austin	26%	40%
Pflugerville	16%	17%
Georgetown	6%	3%
Hutto	5%	6%
Cedar Park	3%	4%
Leander	1%	3%
Taylor	1%	1%
Other	4%	1%
Total	100%	100%

Major Destinations

DESTINATIONS		
Municipality	Percentage	
	from Mainline	from Frontage Rd
Austin	98%	97%
Round Rock	0%	1%
Other	2%	2%
Total	100%	100%

Note: Municipal boundaries don't always align with zip code boundaries.



MoPac North of Parmer – NB PM Peak



Major Origins

ORIGINS		
Municipality	Percentage	
	to Mainline	to Frontage Rd
Austin	97%	97%
Round Rock	1%	1%
Other	2%	2%
Total	100%	100%

Major Destinations

DESTINATIONS		
Municipality	Percentage	
	from Mainline	from Frontage Rd
Round Rock	42%	26%
Austin	22%	43%
Pflugerville	11%	18%
Georgetown	6%	3%
Cedar Park	6%	3%
Hutto	5%	3%
Leander	2%	1%
Other	6%	3%
Total	100%	100%

Note: Municipal boundaries don't always align with US Census Block Groups.



MoPac North of Enfield – SB AM Peak

Major Origins

ORIGINS	
Municipality	Percentage
Austin	67%
Round Rock	11%
Cedar Park	8%
Leander	5%
Pflugerville	4%
Georgetown	2%
Hutto	1%
Other	2%
Total	100%

Major Destinations

DESTINATIONS	
Municipality	Percentage
Austin	95%
Dripping Springs	1%
San Antonio	1%
Buda	1%
Other	2%
Total	100%

Note: Municipal boundaries don't always align with zip code boundaries.





Major Destinations

ORIGINS	
Municipality	Percentage
Austin	93%
Dripping Springs	1%
San Marcos	1%
San Antonio	1%
Buda	1%
Kyle	1%
Other	2%
Total	100%

DESTINATIONS	
Municipality	Percentage
Austin	71%
Round Rock	10%
Cedar Park	7%
Pflugerville	4%
Leander	3%
Georgetown	2%
Other	3%
Total	100%

Note: Municipal boundaries don't always align with US Census Block Groups.



Projects on the Horizon

NORTH
183 A
TOLL

Returning to 183A

- Forging ahead on **extending 183A north** to SH 29



Williamson County residents enjoy a **high quality of life**. I am committed to working with regional partners like the Mobility Authority on projects that preserve that standard. The **northern extension of 183A** is just that kind of project and I look forward to my constituents having **another option to help keep them moving.**”

*Cynthia Long,
Williamson County Commissioner, Precinct Two*



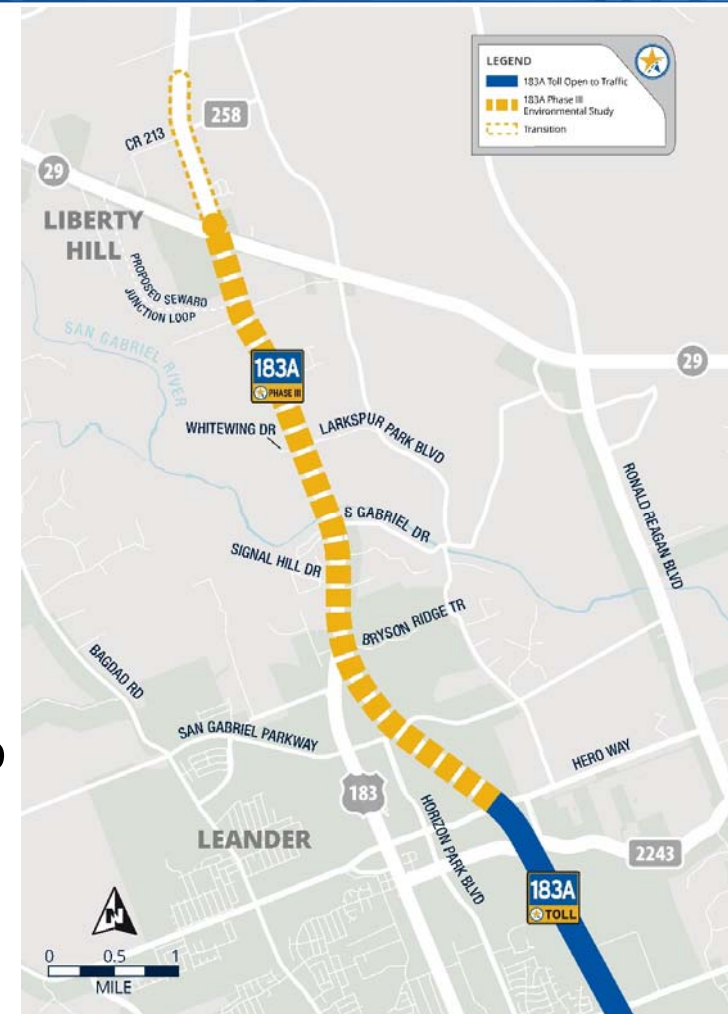
**PLANNING FOR
FUTURE GROWTH**

183A Phase III Project Description

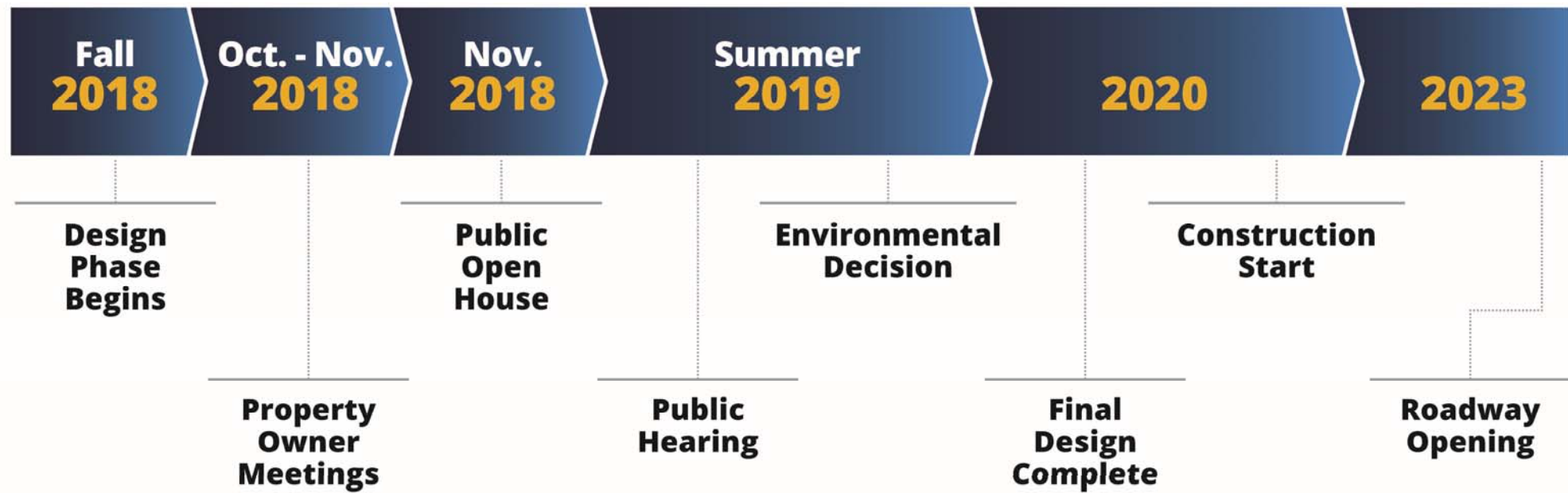


183A Phase III Project

- **Approx 6.6 miles** on 183A / US 183 from Hero Way to north of SH 29
- Ultimate configuration add three lanes in each direction, **Construct two lanes in each direction now and plan for expansion in the future**
- **Shared use path** to extend north from Hero Way to proposed Seward Junction Loop (South) Project



183A Phase III Schedule



*All dates subject to change

183A Phase III Next Steps



Public Hearing: **Mid 2019**

Environmental Finding: **Mid 2019**

Final Design Complete: **Early 2020**

Construction Contractor Selected: **Mid 2020**

Begin Construction: **Late 2020**

Roadway Opens: **Late 2023**

A blue-tinted photograph of a highway. In the foreground, a concrete barrier with rounded posts runs along the right side of the road. To the right of the barrier, a signpost holds three signs: 'NORTH', '183 A', and a 'TOLL' sign with a circular arrow icon. The road stretches into the distance under a cloudy sky. On the left side of the road, there are some trees and a building. On the right side, there are utility poles and a fence.

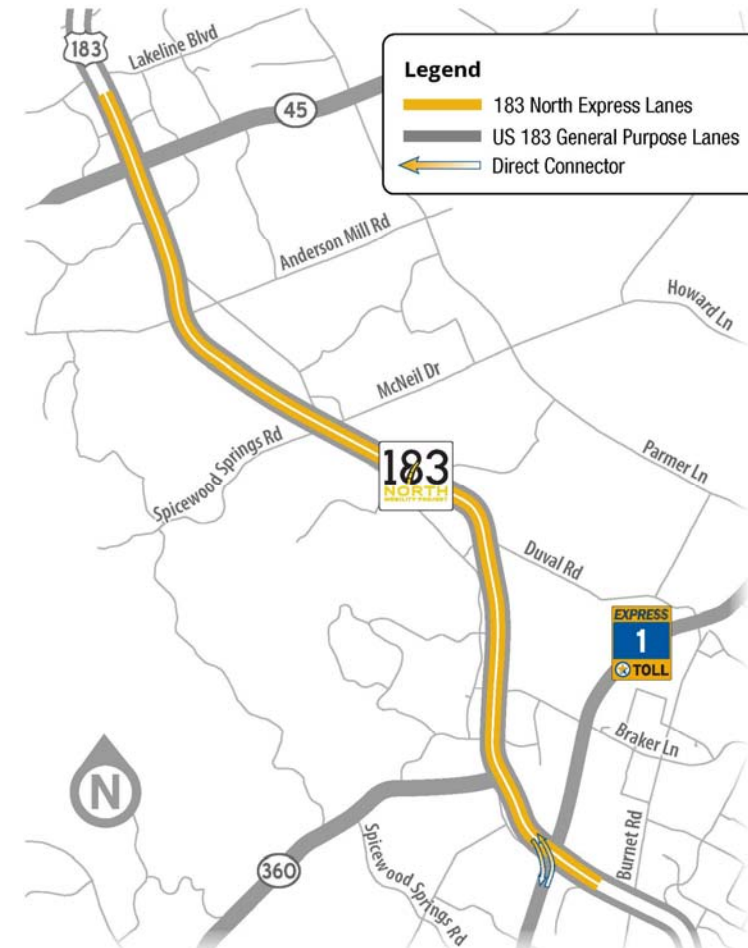
183 North Mobility Project

183 North Project Description

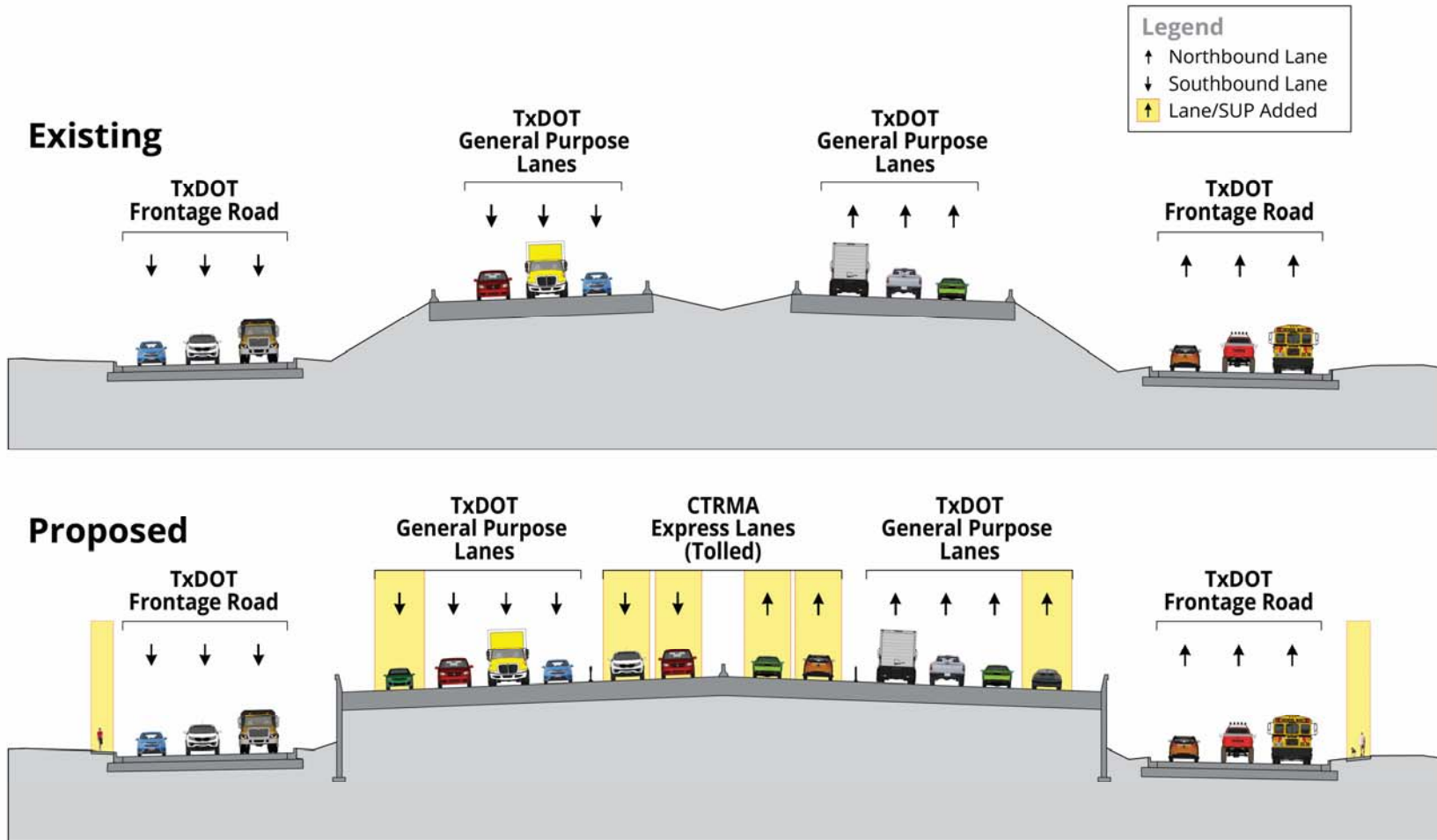


183 North Mobility Project

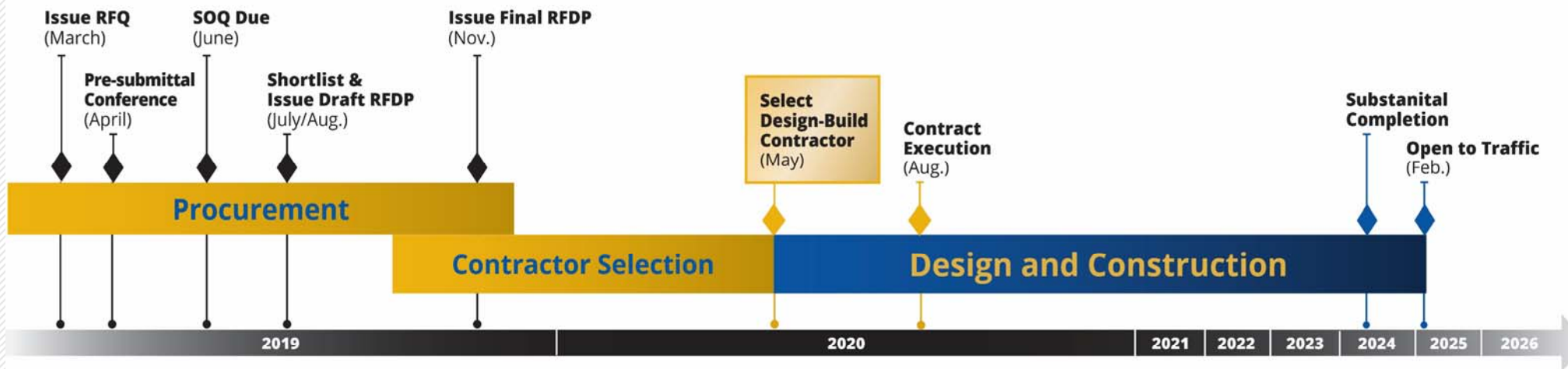
- **Approx. 9-miles** on US 183 from SH45 to MoPac/Loop1
- Add **two express lanes** in each direction
- Widen to **four non-tolled lanes** in each direction
- Additional **operational improvements south along MoPac** including a direct connector
- Bike and pedestrian facilities



183 North Typical Section



183 North Project Timeline



RFQ: Request for Qualifications

RFDP: Request for Detailed Proposal

SOQ: Statement of Qualifications

POS: Preliminary Official Statement



CENTRAL TEXAS REGIONAL
MOBILITY AUTHORITY

Thank You

www.MobilityAuthority.com

