

WORK AUTHORIZATION NO. 7

**PROJECT: Engineering Design Services for Drainage Improvements in Chandler Creek
Subdivision Sections 6A, 6B and 6C**

This Work Authorization is made pursuant to the terms and conditions of the Williamson County Contract for Engineering Services, being dated **March 6, 2018** and entered into by and between Williamson County, Texas, a political subdivision of the State of Texas, (the "County") and **Alliance Transportation Group** (the "Engineer").

Part 1. The Engineer will provide the following Engineering Services set forth in Attachment "B" of this Work Authorization.

Part 2. The maximum amount payable for services under this Work Authorization without modification is **\$120,000.00.**

Part 3. Payment to the Engineer for the services established under this Work Authorization shall be made in accordance with the Contract.

Part 4. This Work Authorization shall become effective on the date of final acceptance and full execution of the parties hereto and shall terminate on **March 31, 2021.** The Engineering Services set forth in Attachment "B" of this Work Authorization shall be fully completed on or before said date unless extended by a Supplemental Work Authorization.

Part 5. This Work Authorization does not waive the parties' responsibilities and obligations provided under the Contract.

Part 6. County believes it has sufficient funds currently available and authorized for expenditure to finance the costs of this Work Authorization. Engineer understands and agrees that County's payment of amounts under this Work Authorization is contingent on the County receiving appropriations or other expenditure authority sufficient to allow the County, in the exercise of reasonable administrative discretion, to continue to make payments under this Contract. It is further understood and agreed by Engineer that County shall have the right to terminate this Contract at the end of any County fiscal year if the governing body of County does not appropriate sufficient funds as determined by County's budget for the fiscal year in question. County may effect such termination by giving written notice of termination to Engineer.

Part 7. This Work Authorization is hereby accepted and acknowledged below.

EXECUTED this ____ day of _____, 2019.

ENGINEER:

Alliance Transportation Group

By: _____

Signature

Clint Jumper

Printed Name

VP, Engineering

Title

COUNTY:

Williamson County, Texas

By: _____

Signature

Bill Gravell, Jr.

Printed Name

Williamson County Judge

Title

LIST OF ATTACHMENTS

Attachment A - Services to be Provided by County

Attachment B - Services to be Provided by Engineer

Attachment C - Work Schedule

Attachment D - Fee Schedule

Attachment A - Services to be Provided by County

Please see next page.

Attachment A

Services to be Provided by County

Williamson County Road & Bridge Division personnel will provide:

- Project direction, review and oversight.
- Topographic Survey, Subsurface utility survey and R.O.W Surveys.
- Geotechnical investigations, data, pavement design and reports.
- ROW Documents and Drainage Reports.
- Conducting pre-bid meeting, responding to contractor questions during bidding, tabulating and evaluating bids after bid opening, and providing recommendation of award of contract.
- Construction oversight, administration and management.

Attachment B - Services to be Provided by Engineer

Please see next pages.

Attachment B

Services to be Provided by the Engineer

Project Locations:

1. **Chandler Creek Subdivision – Alazan Cove**
2. **Chandler Creek Subdivision – Baffin Cove**
3. **Chandler Creek Subdivision – Matagorda Drive**
4. **Chandler Creek Subdivision – Copano Cove**
5. **Chandler Creek Subdivision – Thorn Creek Place**
6. **Chandler Creek Subdivision – Aransas Cove**

Total Length of Roadways = 3,552'

Task 1: Project Management

Attend Progress Review Meetings with County Road & Bridge department at 50%, 90% and Final.
Prepare monthly progress reports and invoices. Maintain project schedule and perform QA/QC.

Task 2: Topographic, Subsurface Utilities and R.O.W Surveys

To be provided by the County

Task 3: Preliminary Engineering

Conduct Site Visit and Field Reconnaissance to document existing conditions. Data collection including available as-builts. Develop a conceptual geometric layout on scroll plot (1"=40' H, 1"=4' V) showing roadway horizontal and vertical geometry and proposed typical section. Prepare preliminary cross sections (50' interval). Drainage design is not included in this scope of services.

Task 4: Geotechnical Investigations

To be provided by the County

Task 5: Environmental Studies

N/A

Task 6: Utility Coordination

N/A

Task 7: FEMA Coordination

N/A

Task 8: Final Engineering

Prepare final detailed design and PS&E for proposed improvements.

Plan Sheets:

- Title Sheet
- Estimate & Quantity Sheet
- Typical Sections

- Horizontal Alignment Data Sheet
- Erosion Control Plan
- Traffic Control Plan (Assumed to be handled via standards on general layouts. No specific TCP plan will be developed)
- Driveway Details
- Driveway Summary
- Roadway Plan & Profile Sheets
- Miscellaneous Roadway Details
- Cross Sections (50' interval and Driveways)
- Standards

Construction Schedule

Specifications

Cost Estimate

General Notes

Task 9: Bidding Phase Services

Prepare Bid-Tabs for processing by Purchasing Department.

Task 10: Construction Phase Services

Review shop drawings and respond to contractor RFIs. Prepare electronic as-built final drawings for the County based on construction red-lines provided by the County.

Deliverables:

50% Submittal:

- 2 paper copies of 11" x 17" Plan Sheets
- Specifications
- Estimate of Construction Cost
- General Notes
- Engineer's internal QA/QC marked up set

90% Submittal:

- 2 paper copies of 11" x 17" Plan Sheets
- Construction Schedule
- Specifications
- Estimate of Construction Cost
- General Notes
- Engineer's internal QA/QC marked up set

Final Submittal:

- 2 paper copies of 11" x 17" Plan Sheets
- Construction Schedule
- Specifications
- Estimate of Construction Cost

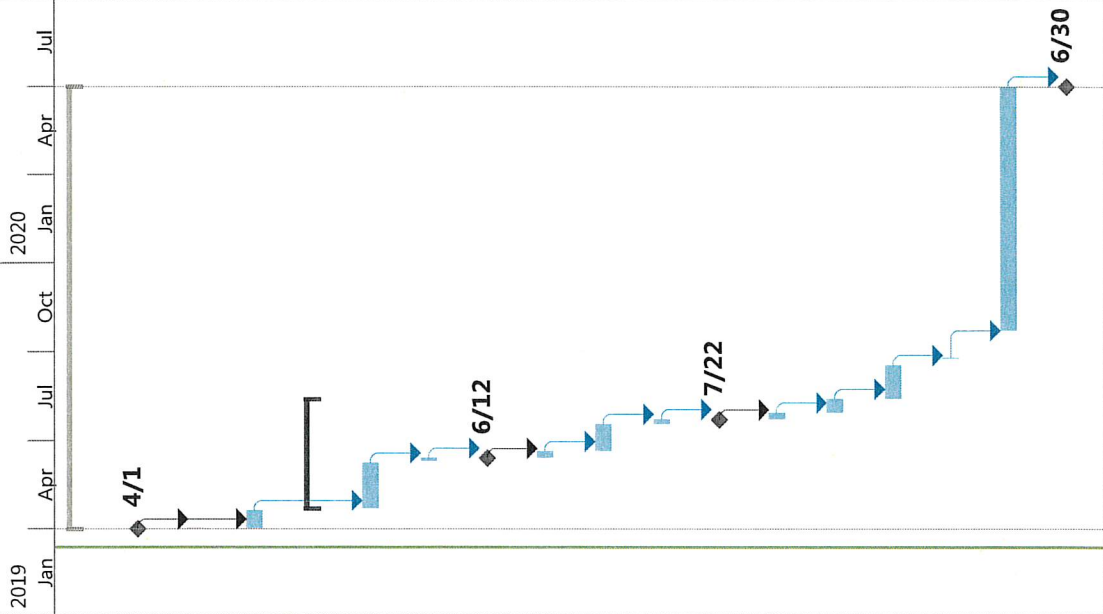
- General Notes
- Engineer's internal QA/QC marked up set
- Electronic copy of submittal documents in PDF format on CD

Attachment C - Work Schedule





Please see next page.

Attachment C

ID	Task Name	Duration	Start	Finish	Predecessors
0	Wilco - Small Drainage & Roadway Design WA07	327 days	Mon 4/1/19	Tue 6/30/20	
1	Notice to Proceed	0 days	Mon 4/1/19	Mon 4/1/19	
2	Collect Data	1 day	Mon 4/1/19	Mon 4/1/19	1
3	Survey (by others)	15 days	Mon 4/1/19	Fri 4/19/19	1
4	Design	81 days	Mon 4/22/19	Mon 8/12/19	
5	50% PS&E	35 days	Mon 4/22/19	Fri 6/7/19	3
6	QA/QC	3 days	Mon 6/10/19	Wed 6/12/19	5
7	Submit 50% PS&E	0 days	Wed 6/12/19	Wed 6/12/19	6
8	County Review	5 days	Thu 6/13/19	Wed 6/19/19	7
9	90% PS&E	20 days	Thu 6/20/19	Wed 7/17/19	8
10	QA/QC	3 days	Thu 7/18/19	Mon 7/22/19	9
11	Submit 90% PS&E	0 days	Mon 7/22/19	Mon 7/22/19	10
12	County Review	5 days	Tue 7/23/19	Mon 7/29/19	11
13	Final PS&E	10 days	Tue 7/30/19	Mon 8/12/19	12
14	Bid Advertisement	25 days	Tue 8/13/19	Mon 9/16/19	13
15	Letting	1 day	Tue 9/24/19	Tue 9/24/19	14FS+5 days
16	Construction	180 days	Wed 10/23/19	Tue 6/30/20	15FS+20 days
17	Complete Project	0 days	Tue 6/30/20	Tue 6/30/20	16



Project: WILCO Small Drainage & Roadway Design WA #7
 Date: Wed 3/13/19

Task  Summary 
 Milestone  Project Summary 

Attachment D - Fee Schedule

Please see next pages.

Task Description	Project Principal	Senior Project Manager	Project Manager	Hydraulic Engineer	Senior Engineer	Project Engineer	Engineer In-Training	Senior Engineering Technician	Engineering Technician	Project Administrator	Clerical	Total Labor Hours & Costs
Task 1: Project Management												
1.1 Progress Review Meetings (3 meetings: 50%, 90% & Final)	6	12	12				9			12	3	21
1.2 Invoicing and Progress Reports (12 months)		12										42
1.3 Subconsultants		12				40						12
1.4 QA/QC of Deliverables at 50%, 90% and FINAL		12										52
Labor Hours Subtotal	6	45	12	0	0	40	9	0	0	12	3	127
Contract Labor Rate Per Hour	\$ 265.00	\$ 244.00	\$ 230.00	\$ 210.00	\$ 205.00	\$ 160.00	\$ 115.00	\$ 133.00	\$ 92.00	\$ 104.00	\$ 85.00	\$ 85.00
Labor Costs Subtotal	\$ 1,590.00	\$ 10,980.00	\$ 2,760.00	\$ -	\$ -	\$ 6,400.00	\$ 1,035.00	\$ -	\$ -	\$ 1,248.00	\$ 255.00	\$ 24,268.00

Task Description	Project Principal	Senior Project Manager	Project Manager	Hydraulic Engineer	Senior Engineer	Project Engineer	Engineer In-Training	Senior Engineering Technician	Engineering Technician	Project Administrator	Clerical	Total Labor Hours & Costs
Task 2: Topographic and R.O.W. Surveys												
N/A												0
Labor Hours Subtotal	0	0	0	0	0	0	0	0	0	0	0	0
Contract Labor Rate Per Hour	\$ 265.00	\$ 244.00	\$ 230.00	\$ 210.00	\$ 205.00	\$ 160.00	\$ 115.00	\$ 133.00	\$ 92.00	\$ 104.00	\$ 85.00	\$ 85.00
Labor Costs Subtotal	\$ -	\$ -	\$ -	\$ -	\$ -	\$ -	\$ -	\$ -	\$ -	\$ -	\$ -	\$ -

Task Description	Project Principal	Senior Project Manager	Project Manager	Hydraulic Engineer	Senior Engineer	Project Engineer	Engineer In-Training	Senior Engineering Technician	Engineering Technician	Project Administrator	Clerical	Total Labor Hours & Costs
Task 3: Preliminary Engineering												
N/A												0
Labor Hours Subtotal	0	0	0	0	0	0	0	0	0	0	0	0
Contract Labor Rate Per Hour	\$ 265.00	\$ 244.00	\$ 230.00	\$ 210.00	\$ 205.00	\$ 160.00	\$ 115.00	\$ 133.00	\$ 92.00	\$ 104.00	\$ 85.00	\$ 85.00
Labor Costs Subtotal	\$ -	\$ -	\$ -	\$ -	\$ -	\$ -	\$ -	\$ -	\$ -	\$ -	\$ -	\$ -

Task Description	Project Principal	Senior Project Manager	Project Manager	Hydraulic Engineer	Senior Engineer	Project Engineer	Engineer In-Training	Senior Engineering Technician	Engineering Technician	Project Administrator	Clerical	Total Labor Hours & Costs
Task 4: Geotechnical Investigation												
N/A												0
Labor Hours Subtotal	0	0	0	0	0	0	0	0	0	0	0	0
Contract Labor Rate Per Hour	\$ 265.00	\$ 244.00	\$ 230.00	\$ 210.00	\$ 205.00	\$ 160.00	\$ 115.00	\$ 133.00	\$ 92.00	\$ 104.00	\$ 85.00	\$ 85.00
Labor Costs Subtotal	\$ -	\$ -	\$ -	\$ -	\$ -	\$ -	\$ -	\$ -	\$ -	\$ -	\$ -	\$ -

Task Description	Project Principal	Senior Project Manager	Project Manager	Hydraulic Engineer	Senior Engineer	Project Engineer	Engineer In-Training	Senior Engineering Technician	Engineering Technician	Project Administrator	Clerical	Total Labor Hours & Costs
Task 5: Environmental Studies												
N/A												0
Labor Hours Subtotal	0	0	0	0	0	0	0	0	0	0	0	0
Contract Labor Rate Per Hour	\$ 265.00	\$ 244.00	\$ 230.00	\$ 210.00	\$ 205.00	\$ 160.00	\$ 115.00	\$ 133.00	\$ 92.00	\$ 104.00	\$ 85.00	\$ 85.00
Labor Costs Subtotal	\$ -	\$ -	\$ -	\$ -	\$ -	\$ -	\$ -	\$ -	\$ -	\$ -	\$ -	\$ -

Task Description	Project Principal	Senior Project Manager	Project Manager	Hydraulic Engineer	Senior Engineer	Project Engineer	Engineer -In- Training	Senior Engineering Technician	Engineering Technician	Project Administrator	Clerical	Total Labor Hours & Costs
Task 6: Utility Coordination												0
N/A												
Labor Hours Subtotal	0	0	0	0	0	0	0	0	0	0	0	0
Contract Labor Rate Per Hour	\$ 265.00	\$ 244.00	\$ 230.00	\$ 210.00	\$ 205.00	\$ 160.00	\$ 115.00	\$ 133.00	\$ 92.00	\$ 104.00	\$ 85.00	\$ 85.00
Labor Costs Subtotal	\$ -	\$ -	\$ -	\$ -	\$ -	\$ -	\$ -	\$ -	\$ -	\$ -	\$ -	\$ -

Task Description	Project Principal	Senior Project Manager	Project Manager	Hydraulic Engineer	Senior Engineer	Project Engineer	Engineer -In- Training	Senior Engineering Technician	Engineering Technician	Project Administrator	Clerical	Total Labor Hours & Costs
Task 7: FEMA Coordination												0
N/A												
Labor Hours Subtotal	0	0	0	0	0	0	0	0	0	0	0	0
Contract Labor Rate Per Hour	\$ 265.00	\$ 244.00	\$ 230.00	\$ 210.00	\$ 205.00	\$ 160.00	\$ 115.00	\$ 133.00	\$ 92.00	\$ 104.00	\$ 85.00	\$ 85.00
Labor Costs Subtotal	\$ -	\$ -	\$ -	\$ -	\$ -	\$ -	\$ -	\$ -	\$ -	\$ -	\$ -	\$ -

Task Description	Project Principal	Senior Project Manager	Project Manager	Hydraulic Engineer	Senior Engineer	Project Engineer	Engineer -In- Training	Senior Engineering Technician	Engineering Technician	Project Administrator	Clerical	Total Labor Hours & Costs
Task 8: Final Engineering												0
N/A												
Labor Hours Subtotal	0	0	0	0	0	0	0	0	0	0	0	0
Contract Labor Rate Per Hour	\$ 265.00	\$ 244.00	\$ 230.00	\$ 210.00	\$ 205.00	\$ 160.00	\$ 115.00	\$ 133.00	\$ 92.00	\$ 104.00	\$ 85.00	\$ 85.00
Labor Costs Subtotal	\$ -	\$ -	\$ -	\$ -	\$ -	\$ -	\$ -	\$ -	\$ -	\$ -	\$ -	\$ -

Task Description	Project Principal	Senior Project Manager	Project Manager	Hydraulic Engineer	Senior Engineer	Project Engineer	Engineer -In- Training	Senior Engineering Technician	Engineering Technician	Project Administrator	Clerical	Total Labor Hours & Costs
Task 9: Bidding Phase Services												0
N/A												
Labor Hours Subtotal	0	0	0	0	0	0	0	0	0	0	0	0
Contract Labor Rate Per Hour	\$ 265.00	\$ 244.00	\$ 230.00	\$ 210.00	\$ 205.00	\$ 160.00	\$ 115.00	\$ 133.00	\$ 92.00	\$ 104.00	\$ 85.00	\$ 85.00
Labor Costs Subtotal	\$ -	\$ -	\$ -	\$ -	\$ -	\$ -	\$ -	\$ -	\$ -	\$ -	\$ -	\$ -

Task Description	Project Principal	Senior Project Manager	Project Manager	Hydraulic Engineer	Senior Engineer	Project Engineer	Engineer -In- Training	Senior Engineering Technician	Engineering Technician	Project Administrator	Clerical	Total Labor Hours & Costs
Task 10: Construction Phase Services												0
N/A												
Labor Hours Subtotal	0	0	0	0	0	0	0	0	0	0	0	0
Contract Labor Rate Per Hour	\$ 265.00	\$ 244.00	\$ 230.00	\$ 210.00	\$ 205.00	\$ 160.00	\$ 115.00	\$ 133.00	\$ 92.00	\$ 104.00	\$ 85.00	\$ 85.00
Labor Costs Subtotal	\$ -	\$ -	\$ -	\$ -	\$ -	\$ -	\$ -	\$ -	\$ -	\$ -	\$ -	\$ -

DESCRIPTION	UNIT	COST/UNIT	QUANTITY	TOTAL COST	TOTAL MIH BY TASK	TOTAL COST BY TASK
Task 1: Project Management					127	\$ 24,268.00
Task 2: Topographic and R.O.W. Surveys					0	\$ -
Task 3: Preliminary Engineering					0	\$ -
Task 4: Geotechnical Investigation					0	\$ -
Task 5: Environmental Studies					0	\$ -
Task 6: Utility Coordination					0	\$ -
Task 7: FEMA Coordination					0	\$ -
Task 8: Final Engineering					0	\$ -
Task 9: Bidding Phase Services					0	\$ -
Task 10: Construction Phase Services					0	\$ -
SUBTOTAL LABOR COST					127	\$ 24,268.00

DESCRIPTION	UNIT	COST/UNIT	QUANTITY	TOTAL COST
Mileage	mile	\$ 0.535		\$ -
Standard Postage - Letter	each	\$ 0.50		\$ -
Certified Letter Return Receipt	each	\$ 6.70		\$ -
Overnight Mail - Letter Size	each	\$ 25.00		\$ -
Overnight Mail - Oversized Box	each	\$ 30.00		\$ -
Courier Services	each	\$ 50.00		\$ -
Photocopies B/W (8 1/2" x 11")	each	\$ 0.25		\$ -
Photocopies B/W (11" x 17")	each	\$ 0.50		\$ -
Photocopies Color (8 1/2" x 11")	each	\$ 1.00		\$ -
Photocopies Color (11" x 17")	each	\$ 2.00		\$ -
Plots (B/W on Bond)	square foot	\$ 6.00		\$ -
Plots (Color on Bond)	square foot	\$ 8.00		\$ -
CDS	each	\$ 0.50		\$ -
SUBTOTAL DIRECT EXPENSES				\$ -

SUMMARY	
SUBTOTAL LABOR COST	\$ 24,268.00
SUBTOTAL DIRECT EXPENSE	\$ -
TOTAL	\$ 24,268.00

Task Description	Senior Engineer	Project Engineer	Structural Engineer	Engineer-in-Training	Engineering Technician	Senior ENV Professional	ENV Professional	Senior ENV Tech	ENV Tech	Clerical	Total Labor-Hours & Costs
Task 1: Project Management											
1.1 Progress Review Meetings (3 meetings: 50%, 90% & Final)	12			12							24
1.2 Invoicing and Progress Reports (12 months)	12									12	24
1.3 Subconsultants											0
1.4 QA/QC of Deliverables at 50%, 90% and FINAL											0
Labor Hours Subtotal	24	0	0	12	0	0	0	0	0	12	48
Contract Labor Rate Per Hour	\$ 217.19	\$ 186.17	\$ 145.83	\$ 117.91	\$ 108.60	\$ 226.50	\$ 186.17	\$ 139.62	\$ 102.39	\$ 105.49	
Labor Costs Subtotal	\$ 5,212.56	\$ -	\$ -	\$ 1,414.92	\$ -	\$ -	\$ -	\$ -	\$ -	\$ 1,265.88	\$ 7,893.36

Task Description	Senior Engineer	Project Engineer	Structural Engineer	Engineer-in-Training	Engineering Technician	Senior ENV Professional	ENV Professional	Senior ENV Tech	ENV Tech	Clerical	Total Labor-Hours & Costs
Task 2: Topographic and R.O.W. Surveys											
N/A											0
Labor Hours Subtotal	0	0	0	0	0	0	0	0	0	0	0
Contract Labor Rate Per Hour	\$ 217.19	\$ 186.17	\$ 145.83	\$ 117.91	\$ 108.60	\$ 226.50	\$ 186.17	\$ 139.62	\$ 102.39	\$ 105.49	
Labor Costs Subtotal	\$ -	\$ -	\$ -	\$ -	\$ -	\$ -	\$ -	\$ -	\$ -	\$ -	\$ -

Task Description	Senior Engineer	Project Engineer	Structural Engineer	Engineer-in-Training	Engineering Technician	Senior ENV Professional	ENV Professional	Senior ENV Tech	ENV Tech	Clerical	Total Labor-Hours & Costs
Task 3: Preliminary Engineering											
3.1 Site Visit & Field Recon	6	6		6							18
3.2 Data Collection				3							3
3.3 Conceptual Geometric Layout											0
Scroll Plot with Plan & Profile (H: 1"=40', V: 1"=4')	3	4		60	24						91
Typical Sections		1		4	8						13
Cross-Sections (50' Intervals)	4	12		50							66
Labor Hours Subtotal	13	23	0	123	32	0	0	0	0	0	191
Contract Labor Rate Per Hour	\$ 217.19	\$ 186.17	\$ 145.83	\$ 117.91	\$ 108.60	\$ 226.50	\$ 186.17	\$ 139.62	\$ 102.39	\$ 105.49	
Labor Costs Subtotal	\$ 2,823.47	\$ 4,281.91	\$ -	\$ 14,502.93	\$ 3,475.20	\$ -	\$ -	\$ -	\$ -	\$ -	\$ 25,083.51

Task Description	Senior Engineer	Project Engineer	Structural Engineer	Engineer-in-Training	Engineering Technician	Senior ENV Professional	ENV Professional	Senior ENV Tech	ENV Tech	Clerical	Total Labor-Hours & Costs
Task 4: Geotechnical Investigation											
N/A											0
Labor Hours Subtotal	0	0	0	0	0	0	0	0	0	0	0
Contract Labor Rate Per Hour	\$ 217.19	\$ 186.17	\$ 145.83	\$ 117.91	\$ 108.60	\$ 226.50	\$ 186.17	\$ 139.62	\$ 102.39	\$ 105.49	
Labor Costs Subtotal	\$ -	\$ -	\$ -	\$ -	\$ -	\$ -	\$ -	\$ -	\$ -	\$ -	\$ -

Task Description	Senior Engineer	Project Engineer	Structural Engineer	Engineer - In-Training	Engineering Technician	Senior ENV Professional	ENV Professional	Senior ENV Tech	ENV Tech	Clerical	Total Labor Hours & Costs
Task 5: Environmental Studies											
N/A											0
Labor Hours Subtotal	0	0	0	0	0	0	0	0	0	0	0
Contract Labor Rate Per Hour	\$ 217.19	\$ 186.17	\$ 145.83	\$ 117.91	\$ 108.60	\$ 226.50	\$ 186.17	\$ 139.62	\$ 102.39	\$ 105.49	
Labor Costs Subtotal	\$ -	\$ -	\$ -	\$ -	\$ -	\$ -	\$ -	\$ -	\$ -	\$ -	\$ -

Task Description	Senior Engineer	Project Engineer	Structural Engineer	Engineer - In-Training	Engineering Technician	Senior ENV Professional	ENV Professional	Senior ENV Tech	ENV Tech	Clerical	Total Labor Hours & Costs
Task 6: Utility Coordination											
N/A											0
Labor Hours Subtotal	0	0	0	0	0	0	0	0	0	0	0
Contract Labor Rate Per Hour	\$ 217.19	\$ 186.17	\$ 145.83	\$ 117.91	\$ 108.60	\$ 226.50	\$ 186.17	\$ 139.62	\$ 102.39	\$ 105.49	
Labor Costs Subtotal	\$ -	\$ -	\$ -	\$ -	\$ -	\$ -	\$ -	\$ -	\$ -	\$ -	\$ -

Task Description	Senior Engineer	Project Engineer	Structural Engineer	Engineer - In-Training	Engineering Technician	Senior ENV Professional	ENV Professional	Senior ENV Tech	ENV Tech	Clerical	Total Labor Hours & Costs
Task 7: FEMA Coordination											
N/A											0
Labor Hours Subtotal	0	0	0	0	0	0	0	0	0	0	0
Contract Labor Rate Per Hour	\$ 217.19	\$ 186.17	\$ 145.83	\$ 117.91	\$ 108.60	\$ 226.50	\$ 186.17	\$ 139.62	\$ 102.39	\$ 105.49	
Labor Costs Subtotal	\$ -	\$ -	\$ -	\$ -	\$ -	\$ -	\$ -	\$ -	\$ -	\$ -	\$ -

Task Description	Senior Engineer	Project Engineer	Structural Engineer	Engineer - In-Training	Engineering Technician	Senior ENV Professional	ENV Professional	Senior ENV Tech	ENV Tech	Clerical	Total Labor Hours & Costs
Task 8: Final Engineering											
8.1 Plans											
Title Sheet	1			1	4						6
Index of Sheets	1			2	2						5
Estimate & Quantity Sheet	1			4	2						7
Typical Sections (6 Roads)	3			6	12						21
Horizontal Alignment Data Sheet (6 Roads)	1			4	2						7
Vertical Alignment Data Sheet (6 Roads)	1			4	2						7
Erosion Control Plan (6 Roads)	1	2		16	12						31
Traffic Control Plan (6 Roads)	1	2		16	12						31
Driveway Details		1		16	8						25
Driveway Summary		2		2	2						4
Roadway Plan & Plan sheets (H: 1"=40', V: 1"=4') (6 Roads)	6	8		60	40						114
Standards	4	4		2	6						68
8.2 Construction Schedule	2	1									3
8.3 Specifications	2	1		20							23
8.4 Cost Estimate	2			16	12						30
8.5 General Notes	4										4
Labor Hours Subtotal	29	19	0	225	114	0	0	0	0	0	387
Contract Labor Rate Per Hour	\$ 217.19	\$ 186.17	\$ 145.83	\$ 117.91	\$ 108.60	\$ 226.50	\$ 186.17	\$ 139.62	\$ 102.39	\$ 105.49	
Labor Costs Subtotal	\$ 6,298.51	\$ 3,537.23	\$ -	\$ 26,529.75	\$ 12,380.40	\$ -	\$ -	\$ -	\$ -	\$ -	\$ 46,745.89

Task Description	Senior Engineer	Project Engineer	Structural Engineer	Engineer-in-Training	Engineering Technician	Senior ENV Professional	ENV Professional	Senior ENV Tech	ENV Tech	Clerical	Total Labor Hours & Costs
Task 9: Bidding Phase Services											
9.1 Prepare Bid Tabs	2	2		6							10
Labor Hours Subtotal											10
Contract Labor Rate Per Hour	\$ 217.19	\$ 186.17	\$ 145.83	\$ 117.91	\$ 108.60	\$ 226.50	\$ 186.17	\$ 139.62	\$ 102.39	\$ 105.49	
Labor Costs Subtotal	\$ 434.38	\$ 372.34	\$ -	\$ 707.46	\$ -	\$ -	\$ -	\$ -	\$ -	\$ -	\$ 1,514.18

Task Description	Senior Engineer	Project Engineer	Structural Engineer	Engineer-in-Training	Engineering Technician	Senior ENV Professional	ENV Professional	Senior ENV Tech	ENV Tech	Clerical	Total Labor Hours & Costs
Task 10: Construction Phase Services											
10.1 Review Shop Drawings and RFI's (Assume 2 RFI's)	4	8		8							20
10.2 OMITTED											0
10.3 Project closeout, As-Builts and submittal of electronic files	1			15	16						33
Labor Hours Subtotal											53
Contract Labor Rate Per Hour	\$ 217.19	\$ 186.17	\$ 145.83	\$ 117.91	\$ 108.60	\$ 226.50	\$ 186.17	\$ 139.62	\$ 102.39	\$ 105.49	
Labor Costs Subtotal	\$ 1,085.95	\$ 1,489.36	\$ -	\$ 2,829.84	\$ 1,737.60	\$ -	\$ -	\$ -	\$ -	\$ -	\$ 7,142.75

DESCRIPTION	Senior Engineer	Project Engineer	Structural Engineer	Engineer-in-Training	Engineering Technician	Senior ENV Professional	ENV Professional	Senior ENV Tech	ENV Tech	Clerical	TOTAL:MH BY TASK	TOTAL COST BY TASK
Task 1: Project Management												
Task 2: Topographic and R.O.W. Surveys											48	\$ 7,895.36
Task 3: Preliminary Engineering											191	\$ 25,083.51
Task 4: Geotechnical Investigation											0	\$ -
Task 5: Environmental Studies											0	\$ -
Task 6: Utility Coordination											0	\$ -
Task 7: FEMA Coordination											387	\$ 48,745.89
Task 8: Final Engineering											10	\$ 1,514.18
Task 9: Bidding Phase Services											53	\$ 7,142.75
Task 10: Construction Phase Services											689	\$ 90,379.69
SUBTOTAL LABOR COST												

DESCRIPTION	Unit	Cost/Unit	Quantity	Total Cost
Mileage	mile	\$ 0.580	100	\$ 58.00
Standard Postage - Letter	each	\$ 0.50		\$ -
Certified Letter Return Receipt	each	\$ 6.70		\$ -
Overnight Mail - Letter Size	each	\$ 25.00		\$ -
Overnight Mail - Oversized Box	each	\$ 30.00		\$ -
Courier Services	each	\$ 50.00	6	\$ 300.00
Photocopies B/W (8 1/2" x 11")	each	\$ 0.25		\$ -
Photocopies B/W (11" x 17")	each	\$ 0.50	500	\$ 250.00
Photocopies Color (8 1/2" x 11")	each	\$ 1.00		\$ -
Photocopies Color (11" x 17")	each	\$ 2.00	20	\$ 40.00
Plots (B/W on Bond)	square foot	\$ 6.00		\$ -
Plots (Color on Bond)	square foot	\$ 8.00		\$ -
CDs	each	\$ 0.50		\$ -
SUBTOTAL DIRECT EXPENSES				\$ 648.00

SUMMARY	
SUBTOTAL LABOR COST	\$ 90,379.69
SUBTOTAL DIRECT EXPENSE	\$ 648.00
TOTAL	\$ 91,027.69

DESCRIPTION	TOTAL MH ATG	TOTAL COST ATG	TOTAL MH CP&Y	TOTAL COST CP&Y	TOTAL COST BY TASK
Task 1: Project Management	127	\$ 24,268.00	48	\$ 7,893.36	\$ 32,161.36
Task 2: Topographic and R.O.W. Surveys	0	\$ -	0	\$ -	\$ -
Task 3: Preliminary Engineering	0	\$ -	191	\$ 25,083.51	\$ 25,083.51
Task 4: Geotechnical Investigation	0	\$ -	0	\$ -	\$ -
Task 5: Environmental Studies	0	\$ -	0	\$ -	\$ -
Task 6: Utility Coordination	0	\$ -	0	\$ -	\$ -
Task 7: FEMA Coordination	0	\$ -	0	\$ -	\$ -
Task 8: Final Engineering	0	\$ -	387	\$ 48,745.89	\$ 48,745.89
Task 9: Bidding Phase Services	0	\$ -	10	\$ 1,514.18	\$ 1,514.18
Task 10: Construction Phase Services	0	\$ -	53	\$ 7,142.75	\$ 7,142.75
SUBTOTAL LABOR COST				\$ 90,379.69	\$ 114,647.69

DESCRIPTION	Unit	Cost/Unit	ATG	CP&Y	Total Cost
Mileage	mile	\$ 0.535	0	100	\$ 53.50
Standard Postage - Letter	each	\$ 0.50	0	0	\$ -
Certified Letter Return Receipt	each	\$ 6.70	0	0	\$ -
Overnight Mail - Letter Size	each	\$ 25.00	0	0	\$ -
Overnight Mail - Oversized Box	each	\$ 30.00	0	0	\$ -
Courier Services	each	\$ 50.00	0	6	\$ 300.00
Photocopies B/W (8 1/2" x 11")	each	\$ 0.25	0	0	\$ -
Photocopies B/W (11" x 17")	each	\$ 0.50	0	500	\$ 250.00
Photocopies Color (8 1/2" x 11")	each	\$ 1.00	0	0	\$ -
Photocopies Color (11" x 17")	each	\$ 2.00	0	20	\$ 40.00
Plots (B/W on Bond)	square foot	\$ 6.00	0	0	\$ -
Plots (Color on Bond)	square foot	\$ 8.00	0	0	\$ -
CDs	each	\$ 0.50	0	0	\$ -
SUBTOTAL DIRECT EXPENSES					\$ 643.50