



Williamson County Recycling and Disposal Facility

Annual Report

Sept. 1, 2018 - Aug. 31, 2019

Williamson County Landfill
Operation Agreement
Section 4.4 (a)



Solid Waste Disposal

Material Collected	Volume (tons)
Waste Disposed	474,891
Diverted Waste (Brush)	2,012

Landfill Site Improvements



South Slope View from
Chandler Road



Storm Water Pond
Expansion



New Access Road

Landfill Gas Collection Improvements

- Installed seven vertical landfill gas extraction wells
- Installed four horizontal landfill gas collectors
- Landfill currently has 66 gas extraction wells



Planned Improvements

- ▶ Construct next disposal cell
- ▶ Construct additional stormwater pond
- ▶ Add landfill gas extraction wells, as needed
- ▶ Install landscaping near Sheriff Training Center
- ▶ Add additional 30' tall litter barrier along south border of Landfill

NO COST TO THE COUNTY!

Recycle Center (Household Products)

LATEX PAINT

USED MOTOR OIL

ANTIFREEZE/COOLANT

APPLIANCES

SCRAP METAL

BRUSH

PLASTIC

PAPER

ALUMINUM

CARDBOARD

ELECTRONICS

BATTERIES

Williamson County Residents Only
No Commercial Business Items

5,245 Recycle Center Visitors

Scrap Metal (lb.)	838,360
Aluminum (lb.)	3,320
Plastic (lb.)	10,980
Paper (lb.)	10,520
Cardboard (lb.)	38,700
Electronics (lb.)	12,000
Household Batteries (lb.)	518
Used Oil (gal.)	1,110
Paint (gal.)	924
Appliances (ea.)	183

Household Hazardous Waste Collection Events

Sept. 8, 2018
Leander, TX



April 27, 2019
Gupton Stadium
Cedar Park, TX

Household Hazardous Waste Event Totals



	Cedar Park	Leander	Total
Participants	1,834	381	2,215
Household Chemicals (lbs.)	21,025	10,210	31,235
Paint (lbs.)	37,712	33,000	70,712
Electronics (lbs.)	13,950	1050	15,000
Motor Oil (Gals.)	1,210	3,520	4,730

Pollinator Garden



Williamson County
Native Plant
Society

Good Water Chapter
Texas Master
Naturalists





Certified Wildlife Habitat

Information Brochures



Educational Opportunities

- Extensive Education Program
 - Recycling Center and Landfill tours
 - School visits and classroom participation

Cottonwood Creek Elementary

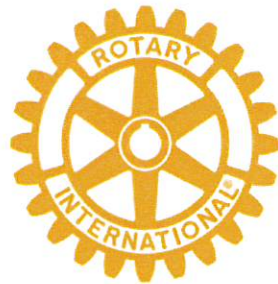


Ray Elementary



Community Involvement

Maintain participation with local civic and charitable organizations

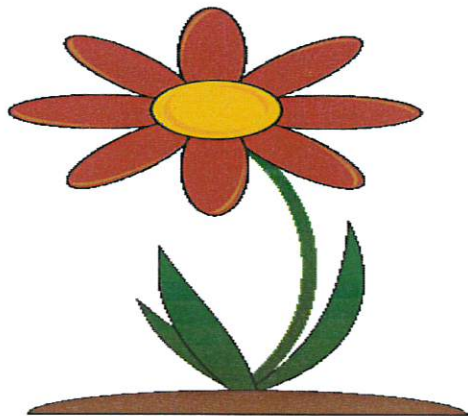


Opportunities
for Williamson & Burnet Counties



Landscape Mulch

- ▶ Trees, brush, limbs, and other vegetation are recycled by chipping and grinding into mulch.
- ▶ Mulch is offered to Williamson County residents, free of charge.



Christmas Tree Recycling Free for Wilco Residents

- ▶ Dec. 26 - Jan. 19
- ▶ No trees with flocking or tinsel
- ▶ No trees with stands attached
- ▶ No artificial trees
- ▶ No trees with decoration

