

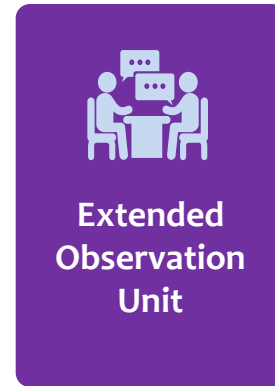


Collaborating to Increase Access to Critical Care: Expansion of Extended Observation Unit

August 6, 2020

Continuum of Psychiatric Care

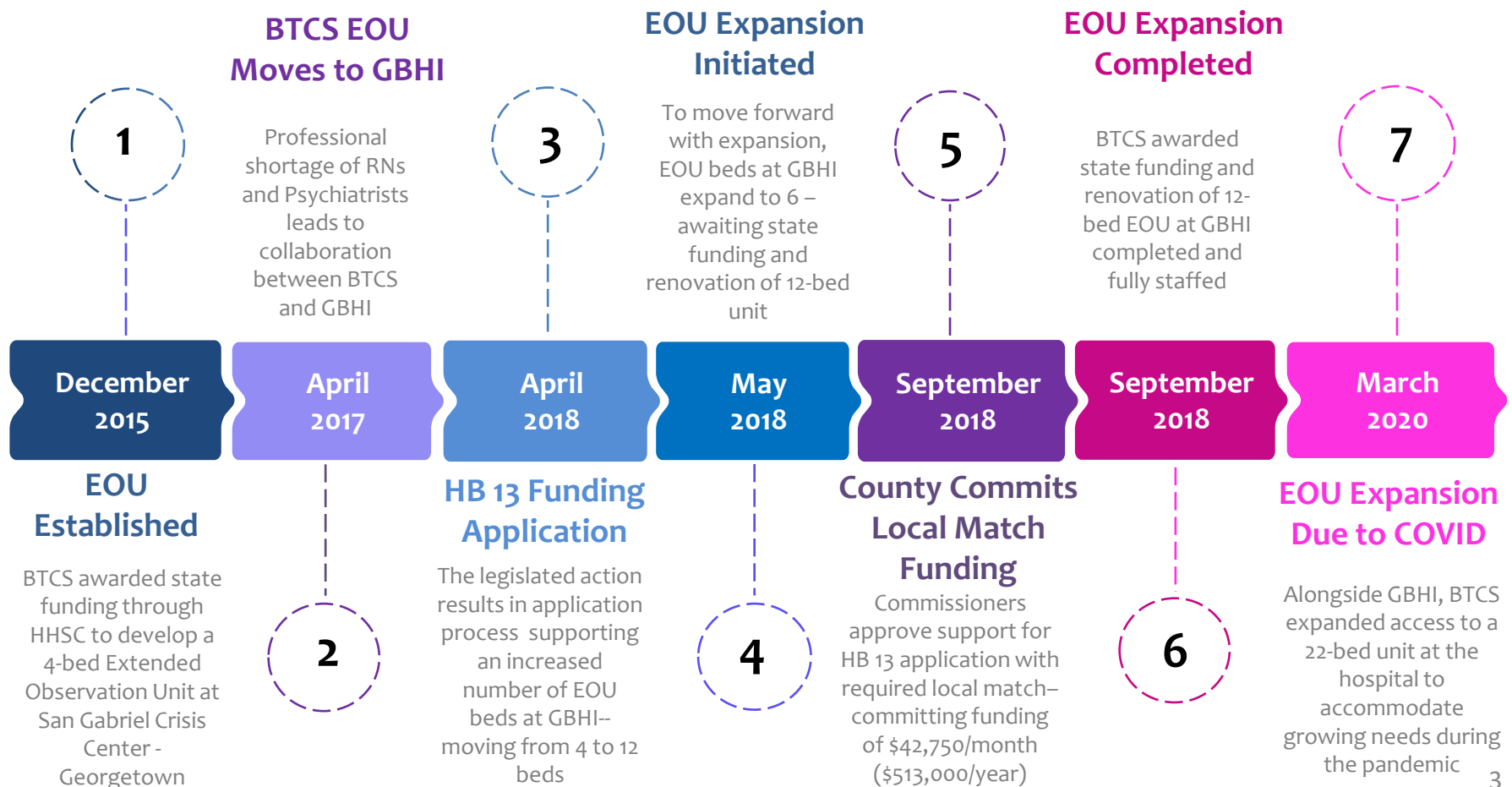
Goal: Early intervention to **avoid** and **divert** from more intensive levels of care



Goal: Successful recovery **stepping down** into lesser intensive levels of care

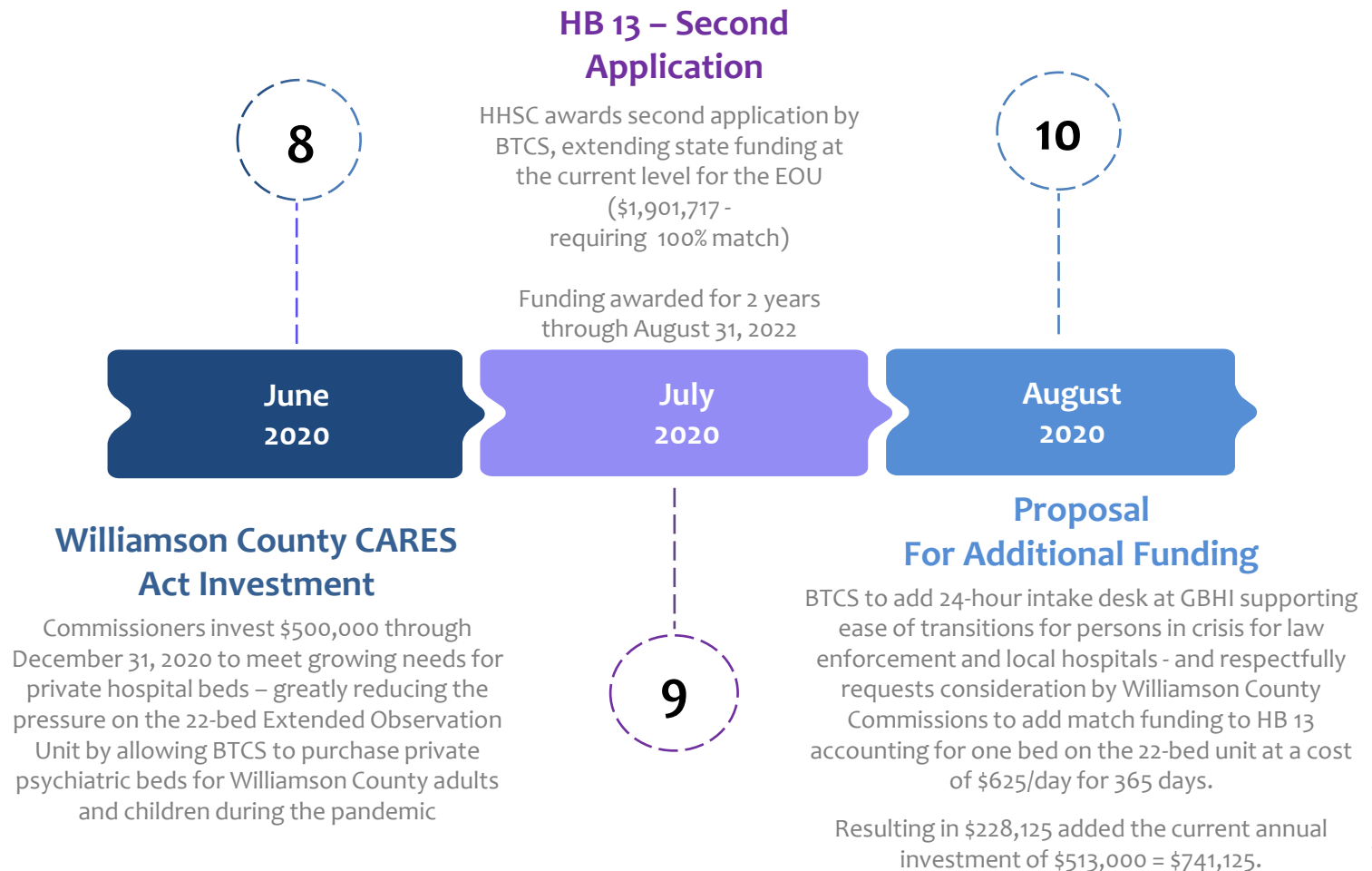


Extended Observation Unit – Collaboration





Collaboration – Continued



Texas Health and Human Services Commission (HHSC) Performance Audit



Extended Observation Unit

Fiscal Year 2020-to-Date

Report Date: August 3, 2020

Target Counts: September 1, 2019 through July 31, 2020 (*Year-to-Date = 11 Months*)

Unduplicated Number Served through Extended Observation Unit

Contracted Target Expectation: 505 (*550 = 12-Month Contractual Target*)

Audited Actual Number Served: 649

Outcome Expectations: September 1, 2019 through July 31, 2020 (*Year-to-Date: 11 Months*)

Rate of Persons Number Admitted to Lower Level of Care Upon Discharge from EOU

Contract Expectation: >95%

Audited Rate Achieved: 99%

Recidivism Rate (Repeated Admissions) to EOU within 12-Month Period

Contract Expectation: <10%

Audited Rate Achieved: 3%



Extended Observation Unit

Fiscal Year 2020-to-Date

Report Date: August 3, 2020

Outcome Expectations, Continued: September 1, 2019 through July 31, 2020
(Year-to-Date = 11 Months)

Percent of Admissions to EOU Reducing Length of Person's Stay in a Medical Hospital, State Hospital or Justice Setting

Contract Expectation: >40%

Audited Rate Achieved: 58%

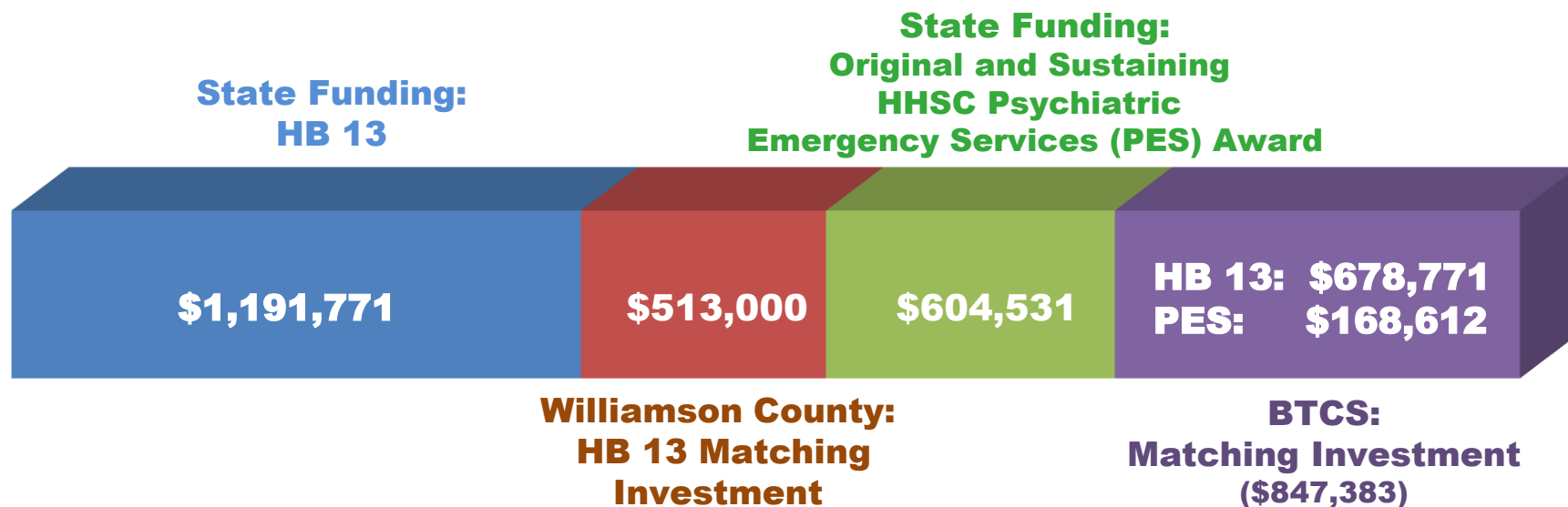
Percent of EOU Bed Capacity Utilized

Contract Expectation: >90%

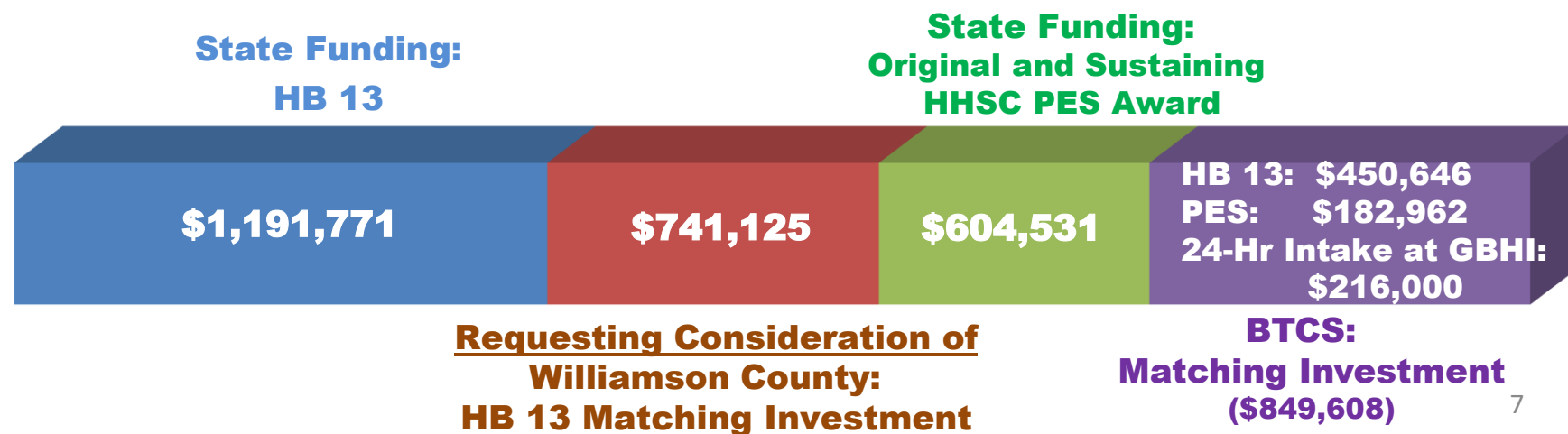
Audited Rate Achieved: 97%

Current Investments - Extended Observation Unit (EOU)

Total Costs for EOU FY 2020: \$3,156,685



Total Projected Costs for EOU FY 2021: \$3,372,685





**With appreciation for the Support
of the Williamson County Commissioners Court
and Our Community Partners**



Andrea Richardson, Executive Director
Andrea.Richardson@bbtrails.org



Monica Ochoa, Chief Executive Officer
Monica.Ochoa@georgetownbehavioral.com