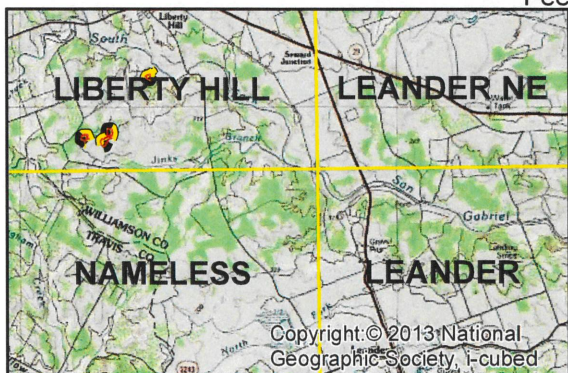
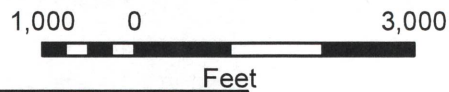
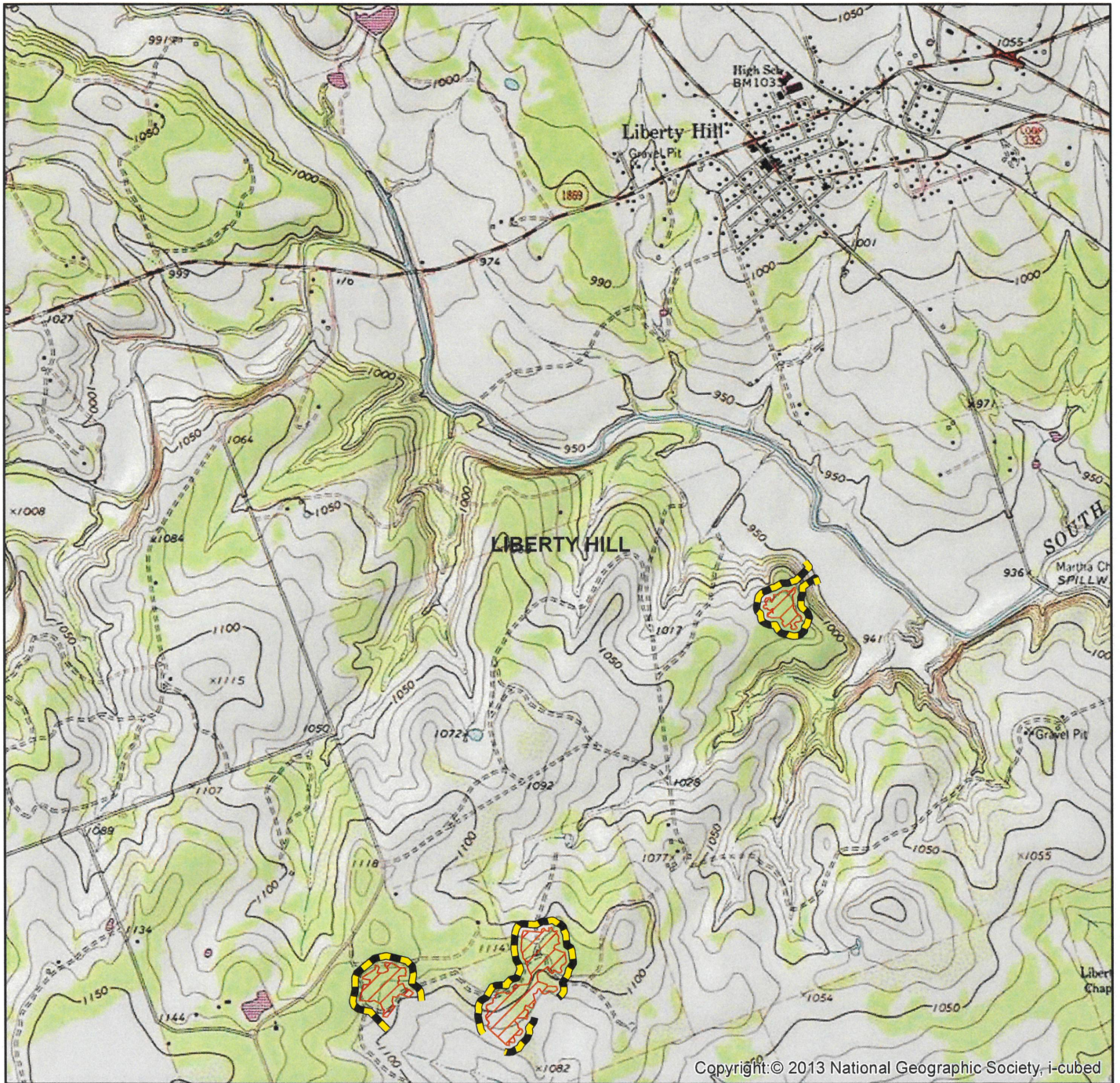


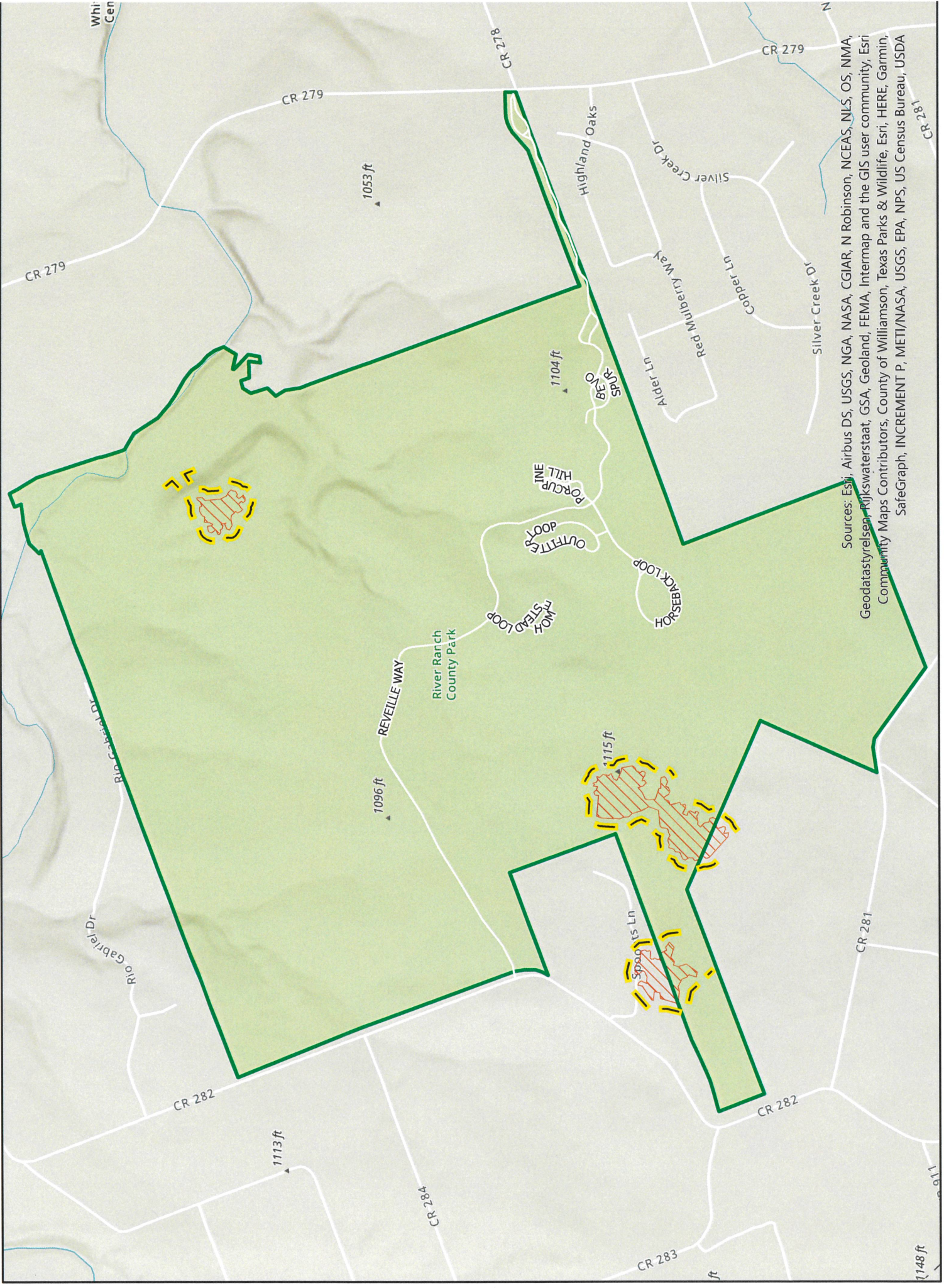
# River Ranch Park

## General Location Map



Landowner: River Ranch County Park  
Case Number: 2021-AN-1-1  
County: Williamson  
Quadrangle: Liberty Hill  
UTM Northing: 33894844  
UTM Easting: 602253  
Map Date: 7/14/2020  
Forester: Camille Wiseman





Sources: Esri, Airbus DS, USGS, NGA, NASA, CGIAR, N Robinson, NCEAS, NLS, OS, NMA, Geodatastyrelsen, Pijkswaterstaat, GSA, Geoland, FEMA, Intermap and the GIS user community, Esri Community Maps Contributors, County of Williamson, Texas Parks & Wildlife, Esri, HERE, Garmin, SafeGraph, INCREMENT P, METI/NASA, USGS, EPA, NPS, US Census Bureau, USDA



# Oak Wilt

## Treatment Map

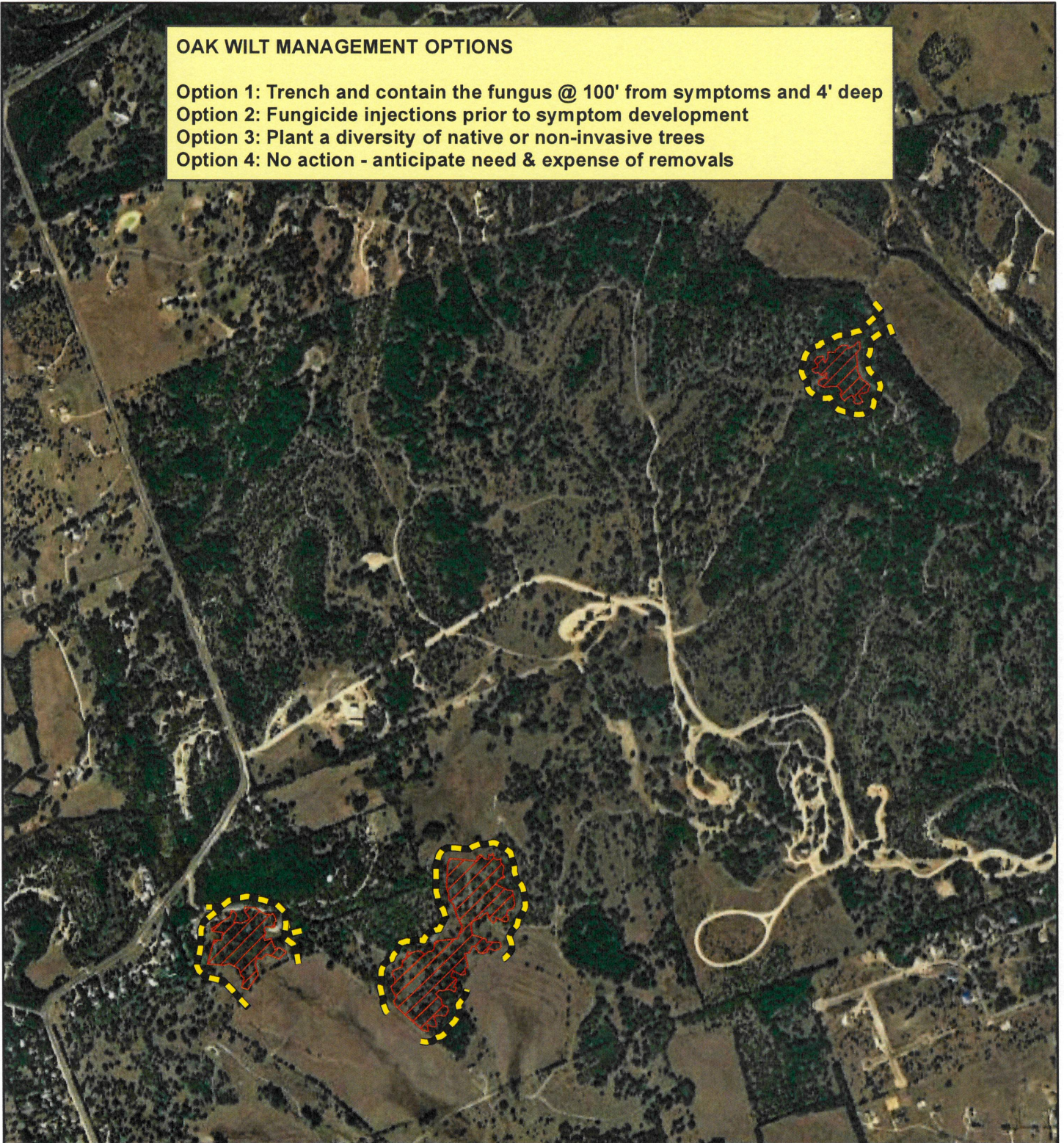
### OAK WILT MANAGEMENT OPTIONS

Option 1: Trench and contain the fungus @ 100' from symptoms and 4' deep

Option 2: Fungicide injections prior to symptom development

Option 3: Plant a diversity of native or non-invasive trees

Option 4: No action - anticipate need & expense of removals



### Legend

 MortalityCenter selection 2

 Trench



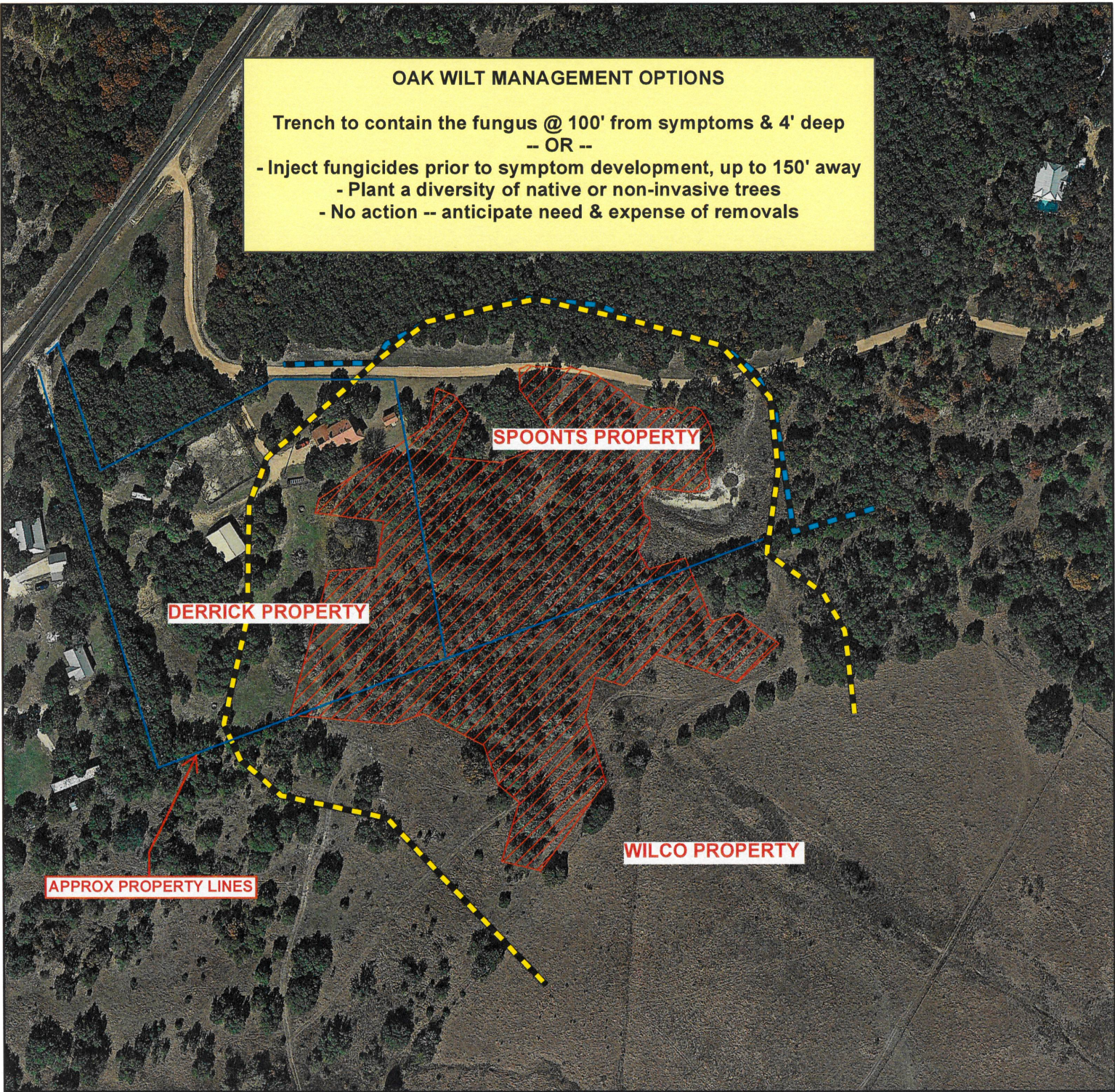


# Oak Wilt Treatment Map

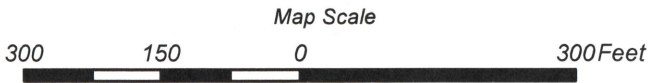


**OAK WILT MANAGEMENT OPTIONS**




Trench to contain the fungus @ 100' from symptoms & 4' deep  
-- OR --  
- Inject fungicides prior to symptom development, up to 150' away  
- Plant a diversity of native or non-invasive trees  
- No action -- anticipate need & expense of removals



## LEGEND



### Type

-  CSPrimary
-  NCSTrench
-  MortalityCenter



Location: Spoons  
Case:  
County: Williamson  
Quadrangle: Liberty Hill  
UTM Northing: 3389391  
UTM Easting: 601689  
Mortality Numbers: 72341  
Map Date: May 20, 2020  
Forester: Karl Flocke. TFS Austin