



# PRIME CONSTRUCTION COMPANY, INC.

WWW.PCCIUSA.COM

20907 Martin Ln Pflugerville, TX 78660

(office) 512.244.7799 (fax) 512.990.9886

## CHANGE ORDER NO. 10

### Project: River Ranch County Park Phase 1 Improvements

This Change Order includes the following modifications to the scopes of work originally contracted for the subject project between Ritter – Botkin Prime Construction Company Inc. (Contractor) and Williamson County (Owner):

#### SCOPE:

Deduct for 1 missing exhaust air louver in the restroom.

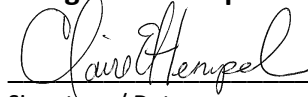
#### Total request for this Change Order

**\$-297.72**

This Change Order shall constitute full and final negotiations for the said scope of work with no assumptions, additional obligations or promises made other than what is strictly written within this document. This instrument cannot and does not change, modify, or exclude any terms within the original contract entered into previously by both parties unless specifically stated. This change order will become effective, in whole, with signatures from parties noted below.

**Change Order: \$ -297.72**

#### Design Workshop



Signature / Date

Claire Hempel

Printed Name

#### Prime Construction Company Inc.



Signature / Date

Herb Deazvedo

Printed Name

#### Williamson County

 12/11/20

Signature / Date

Dale Butler

Printed Name



Prime Construction Company Inc.  
20907 Martin Lane  
Pflugerville, Texas 78660  
P: (512) 244-7799  
F: (512) 990-9886

Project: 02.18010 - River Ranch County Park Phase 1 Improvements  
1751 County Road 282  
Liberty Hill, Texas 78642

## CHANGE EVENT #148 - DCO - Exhaust Air Louver

**Origin:**

**Date Created:** 12/9/2020

**Status:** Open

**Type:** Owner Change

**Description:** Deduct for 1 missing exhaust air louver in the restroom.

**Attachments:**

**Created By:** Stephanie Bernard

**Scope:** Out of Scope

**Change Reason:** Client Request

### CHANGE EVENT LINE ITEMS

			Revenue			Cost					
Cost Code	Cost Type	Vendor / Contract	ROM	Prime PCO	Latest Price	ROM	RFQ	Commit.	Latest Cost	Over/ Under	Budget Mod.
		Prime Construction Company Inc.	\$(297.72)		\$(297.72)	\$(297.72)			\$(297.72)	\$0.00	
Description: DCO - Exhaust Air Louver											
Grand Totals			\$(297.72)	\$0.00	\$(297.72)	\$(297.72)	\$0.00	\$0.00	\$(297.72)	\$0.00	\$0.00

MARK NO.	GREENHECK WC EXHAUST	GREENHECK WC INTAKE	GREENHECK GRS	GREENHECK FABRAHOOD	NOT USED	NOT USED
H1	-	-	8"	-	-	-
-	-	-	-	-	-	-
H1B	-	-	14"	-	-	-
-	-	-	-	-	-	-
-	-	-	-	-	-	-
H1D	-	-	12"	-	-	-
-	-	-	-	-	-	-
-	-	-	-	-	-	-

MARK NO.	SIZE ( W x H )	.	.	.	.	.
L - 1	16 x 16	.	.	.	.	.
.	.	.	.	.	.	.
L - 1M	36 x 36	.	.	.	.	.
L - 2M	36 x 36	.	.	.	.	.
L - 3M	36 x 36	.	.	.	.	.
L - 4M	16 x 16	.	.	.	.	.
.	.	.	.	.	.	.
.	.	.	.	.	.	.

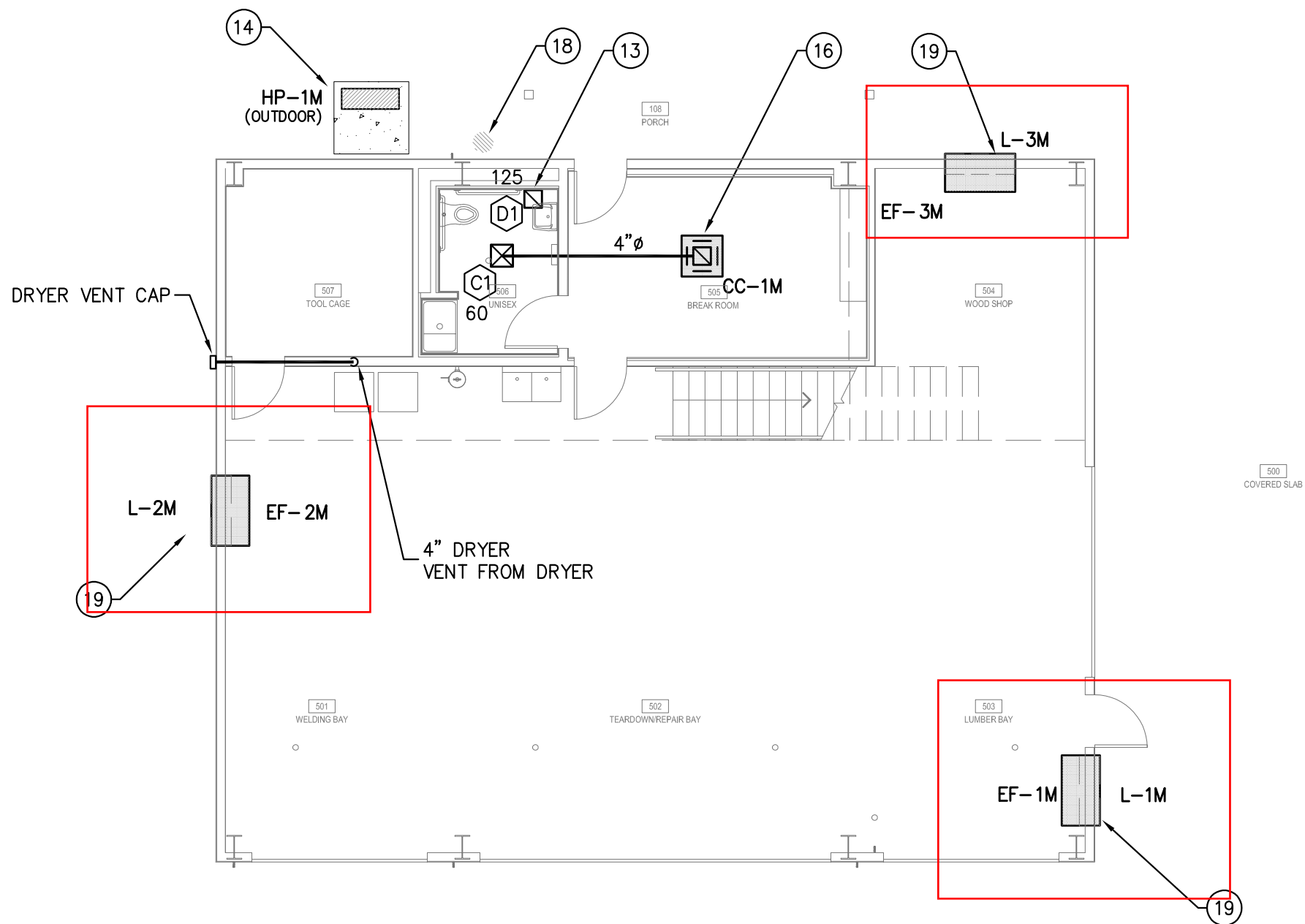
MARK NO.	MODEL NO.	NOMINAL TONS	SEER	VOLT/PH	MCA/MOCP	WEIGHT	NOTES
AC-1 (indoor)	FTXN18KVJU	1.5	18	240/1	N/A	30	ELECT FED FROM OUTDOOR
AC-1 (outdoor)	RKN18KEVJU	1.5	18	240/1	15/20	117	

MARK	MODEL #	Manufacturer	Piping Limits		Unit Type	NOMINAL TONS	CFM	SEER	VOLT-PH	MCA	MOP	WEIGHT
HP-1M	RZQ18PVJU9	Daikin	Total	Vertical	Outdoor	1		18.60	208/230-1	16.5	20	150
CC-1M	FCQ18PAVJU		164	98	3'x3' Ceiling Cassette		390-560		208/230-1	0.4	15	43

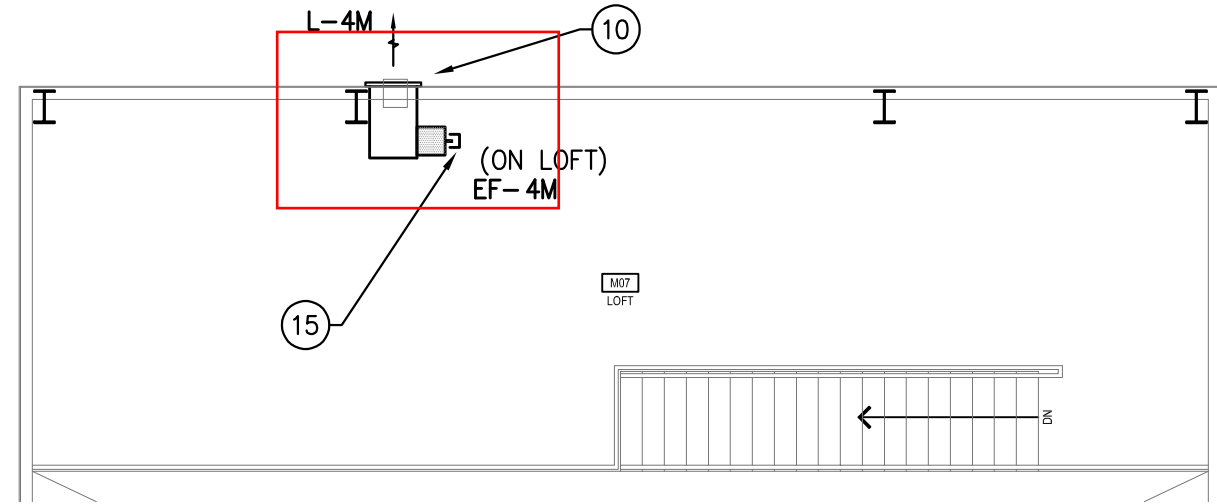
**\*For pricing contact Direct Expansion Solutions at (210) 215-5845**



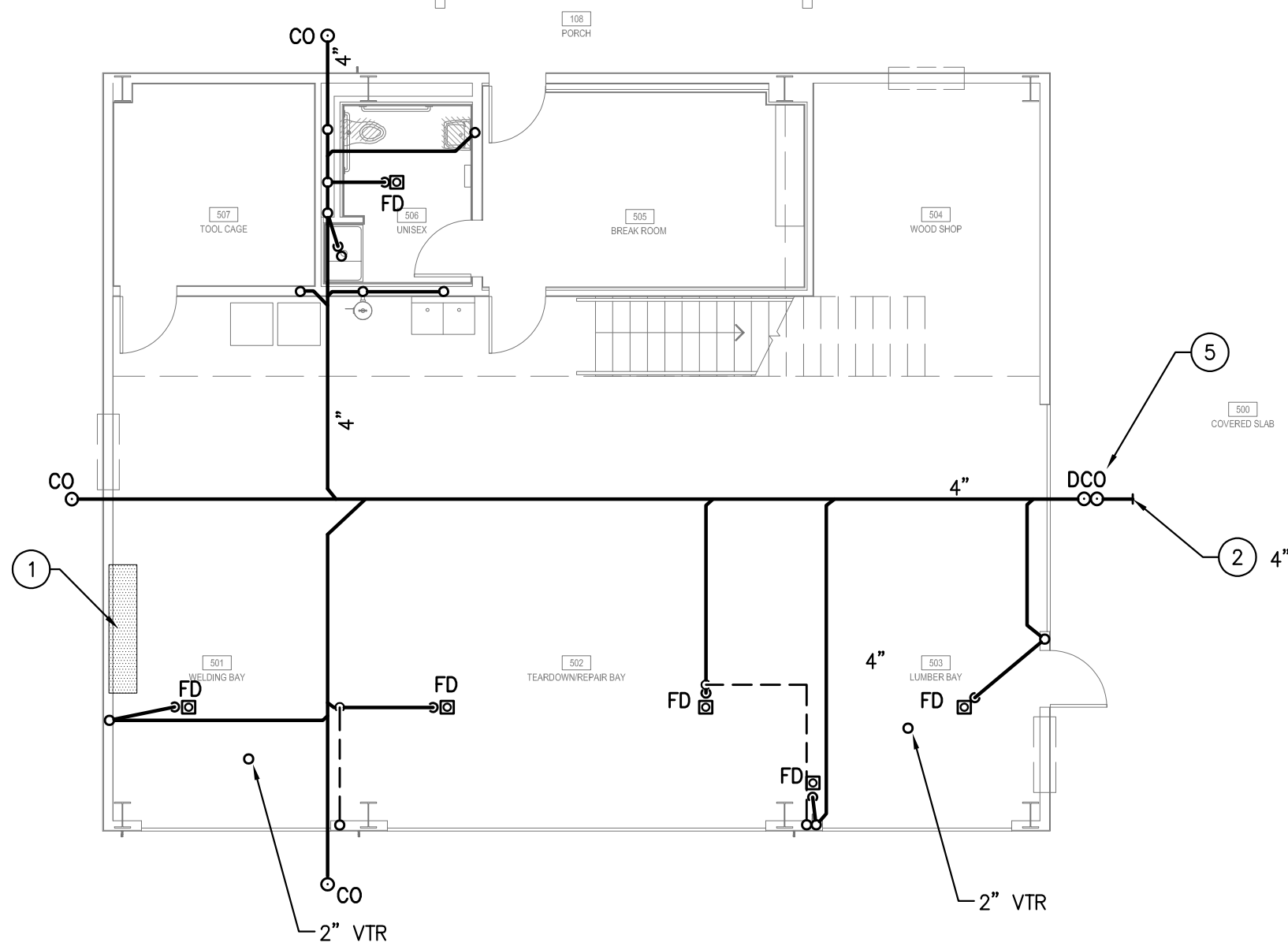
G:\2016\WILCO - RIVER RANCH COUNTY PARK\094104\MP250.dwg, 4/11/2019 9:03:10 AM, Keith, Bluebeam PDF, ARCH\_D\_(24.00\_x\_36.00\_inches), 0.125:12



05 FLOOR PLAN - MECHANICAL  
SCALE: 1/8" = 1'-0"

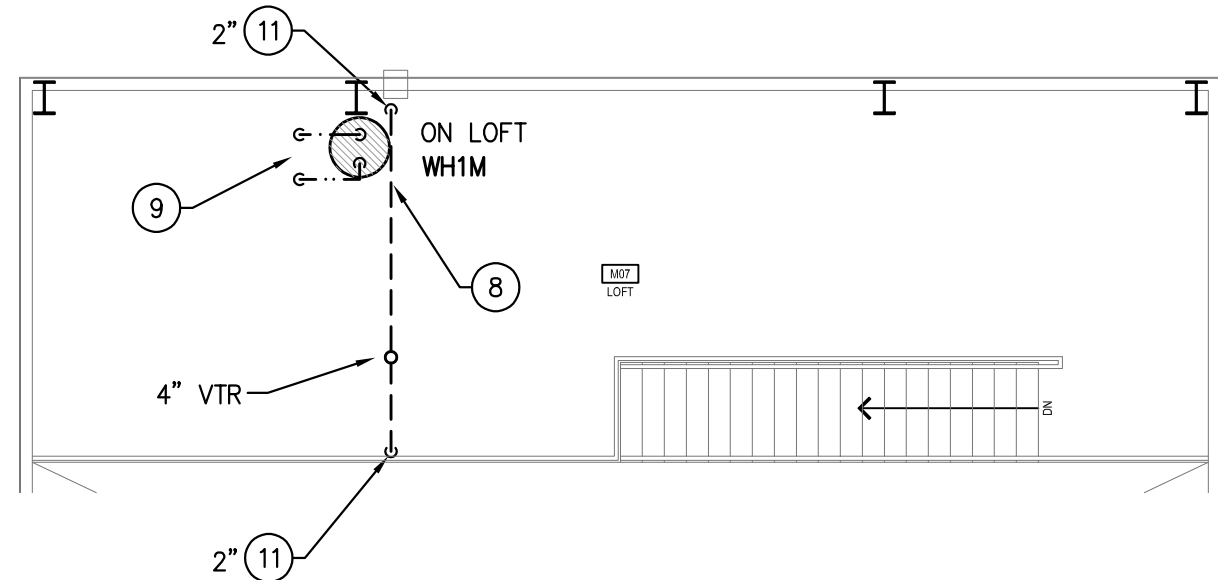


03 LOFT PLAN - MECHANICAL  
SCALE: 1/8" = 1'-0"

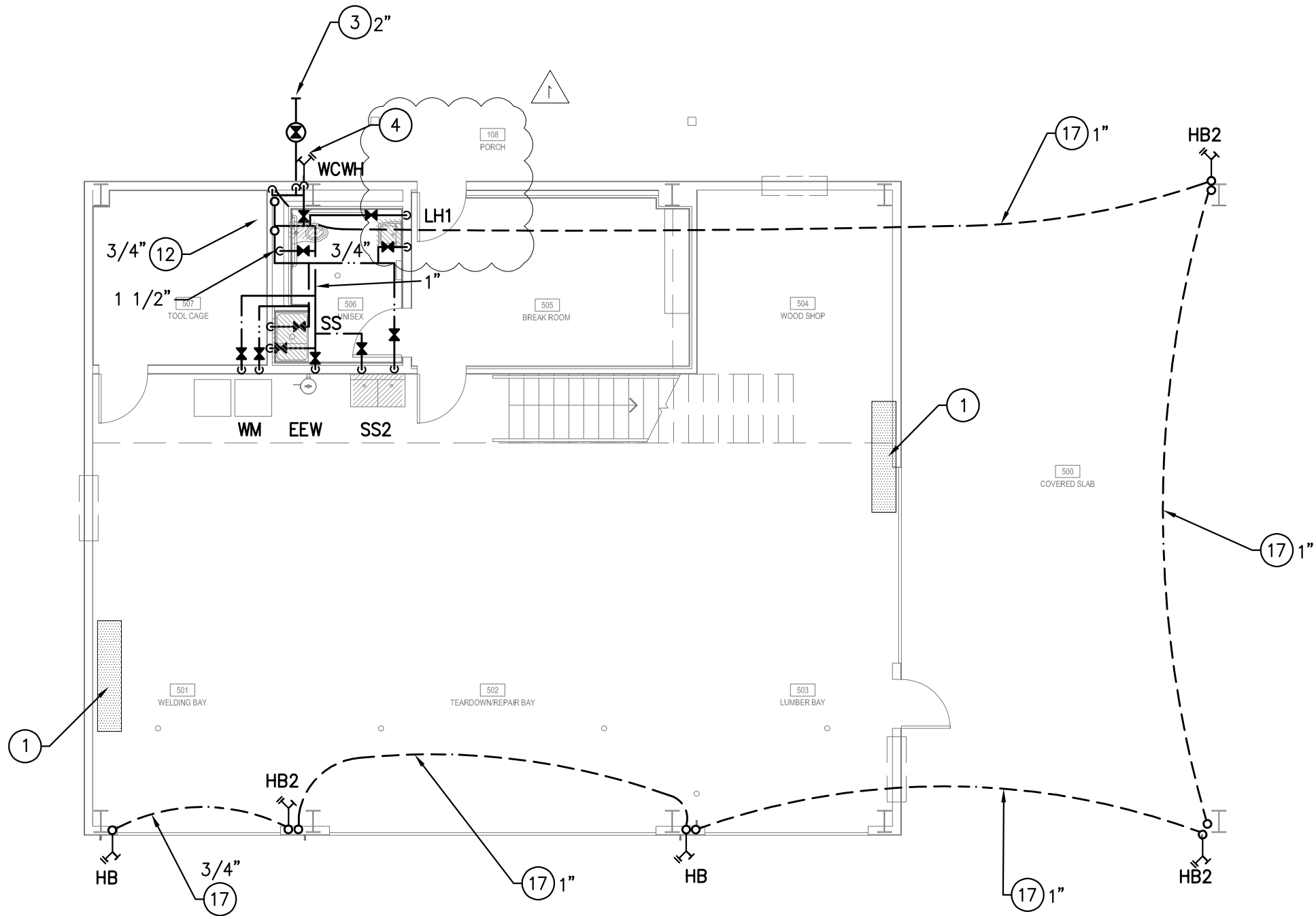


01 FLOOR PLAN - PLUMBING - WASTE  
SCALE: 1/8" = 1'-0"

- ### KEYED NOTES
- THESE NOTES APPLY TO THIS SHEET ONLY
- DO NOT ROUTE ANY DUCTWORK AND/OR PIPING ABOVE THIS AREA.
  - CONNECT TO WASTEWATER (WW) STUB PROVIDED BY CIVIL. FIELD VERIFY EXACT LOCATION AND INVERT. PROVIDE ADAPTER AS REQUIRED TO MAKE SIZE AND/OR MATERIAL TRANSITION.
  - CONNECT TO COLD WATER (CW) STUB PROVIDED BY CIVIL. FIELD VERIFY EXACT LOCATION. PROVIDE ADAPTER AS REQUIRED TO MAKE SIZE AND/OR MATERIAL TRANSITION.
  - RE: CW BUILDING ENTRY DETAIL ON PLUMBING DETAIL SHEET(S).
  - RE: DOUBLE CLEANOUT DETAIL ON PLUMBING DETAIL SHEET(S).
  - RE: EXTERIOR CLEANOUT DETAIL ON PLUMBING DETAIL SHEET(S).
  - RE: INTERIOR CLEANOUT DETAIL ON PLUMBING DETAIL SHEET(S).
  - RE: WATER HEATER DETAIL ON PLUMBING DETAIL SHEET(S) FOR WATER HEATER AND HOT WATER RECIRCULATION PUMP PIPING.
  - HOT AND COLD WATER DOWN TO/FROM FLOOR BELOW.
  - EXHAUST AIR LOUVER. REFERENCE ARCHITECTURAL FOR EXACT LOCATION. PROVIDE 24" DEEP (MINIMUM) EXTERNALLY WRAPPED SHEET METAL PLENUM FULL SIZE OF LOUVER ON BACK OF LOUVER. BOTTOM OF PLENUM TO BE WELDED WATERTIGHT AND SLOPED TO DRAIN TOWARDS EXTERIOR.
  - VENT FROM FLOOR BELOW.
  - HOT AND COLD WATER UP TO/FROM WATER HEATER ON LOFT.
  - EXHAUST DUCT UP TO EXHAUST FAN ON LOFT.
  - 4" THICK REINFORCED CONCRETE PAD BY GENERAL CONTRACTOR.
  - EXHAUST DUCT FROM FLOOR BELOW UP TO EXHAUST FAN ON LOFT.
  - ROUTE CONDENSATE TO DRYWELL. CONDENSATE **CANNOT** GO INTO SEWER WHICH GOES INTO SEPTIC SYSTEM. RE: DRYWELL DETAIL ON MECHANICAL DETAIL SHEETS.
  - INSULATED WATER PIPING BELOW FINISHED FLOOR.
  - DRYWELL FOR CONDENSATE FROM MECHANICAL UNIT BY MECHANICAL CONTRACTOR. REFERENCE "DRYWELL DETAIL" ON DETAIL SHEET(S).
  - EXHAUST AIR LOUVER. REFERENCE ARCHITECTURAL FOR EXACT LOCATION. PROVIDE EXTERNALLY WRAPPED SHEET METAL PLENUM FULL SIZE OF LOUVER ON BACK OF LOUVER. BOTTOM OF PLENUM TO BE WELDED WATERTIGHT AND SLOPED TO DRAIN TOWARDS EXTERIOR. FAN WALL HOUSING TO BE INSTALLED ON BACKSIDE OF PLENUM. INSTALL PER MANUFACTURER'S INSTALLATION INSTRUCTIONS.



04 LOFT PLAN - PLUMBING  
SCALE: 1/8" = 1'-0"



02 FLOOR PLAN - PLUMBING - SUPPLY  
SCALE: 1/8" = 1'-0"

REFERENCE GENERAL NOTES ON SHEETS W000, P000 AND E000 FOR ADDITIONAL INFORMATION

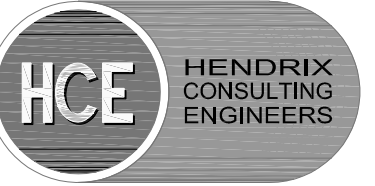
## DESIGNWORKSHOP

Landscape Architecture • Land Planning  
Urban Design • Tourism Planning

Asheville • Aspen • Austin • Beijing • Chicago •  
Denver • Dubai • Houston • Lake Tahoe • Los Angeles

800 Brazos St, Suite 490  
Austin, TX 78701  
(512) 499-0222

WWW.DESIGNWORKSHOP.COM



This document, the ideas and designs incorporated herein are and shall remain the property of Hendrix Consulting Engineers. These documents are not to be used or altered, in whole or in part, for other than the original intended use, nor are they to be assigned to any third party without written permission from Hendrix Consulting Engineers. F - 4095

© HCE job no.: 16-094

## RIVER RANCH COUNTY PARK PHASE 1 IMPROVEMENTS WILLIAMSON COUNTY, TX



ISSUE DATE: December 07, 2018

#	DATE	DESCRIPTION
1	03.29.2019	ASI 002 (LAVATORY FAUCETS)
3	04.12.2019	ASI 003 (BLDG MIRRORED)

DRAWN: REVIEWED:

ISSUE FOR  
CONSTRUCTION

PROJECT NUMBER: 5619

FLOOR PLANS -  
MAINTENANCE -  
MECH PLBG

SHEET NUMBER

MP250

© COPYRIGHT DESIGNWORKSHOP, INC.