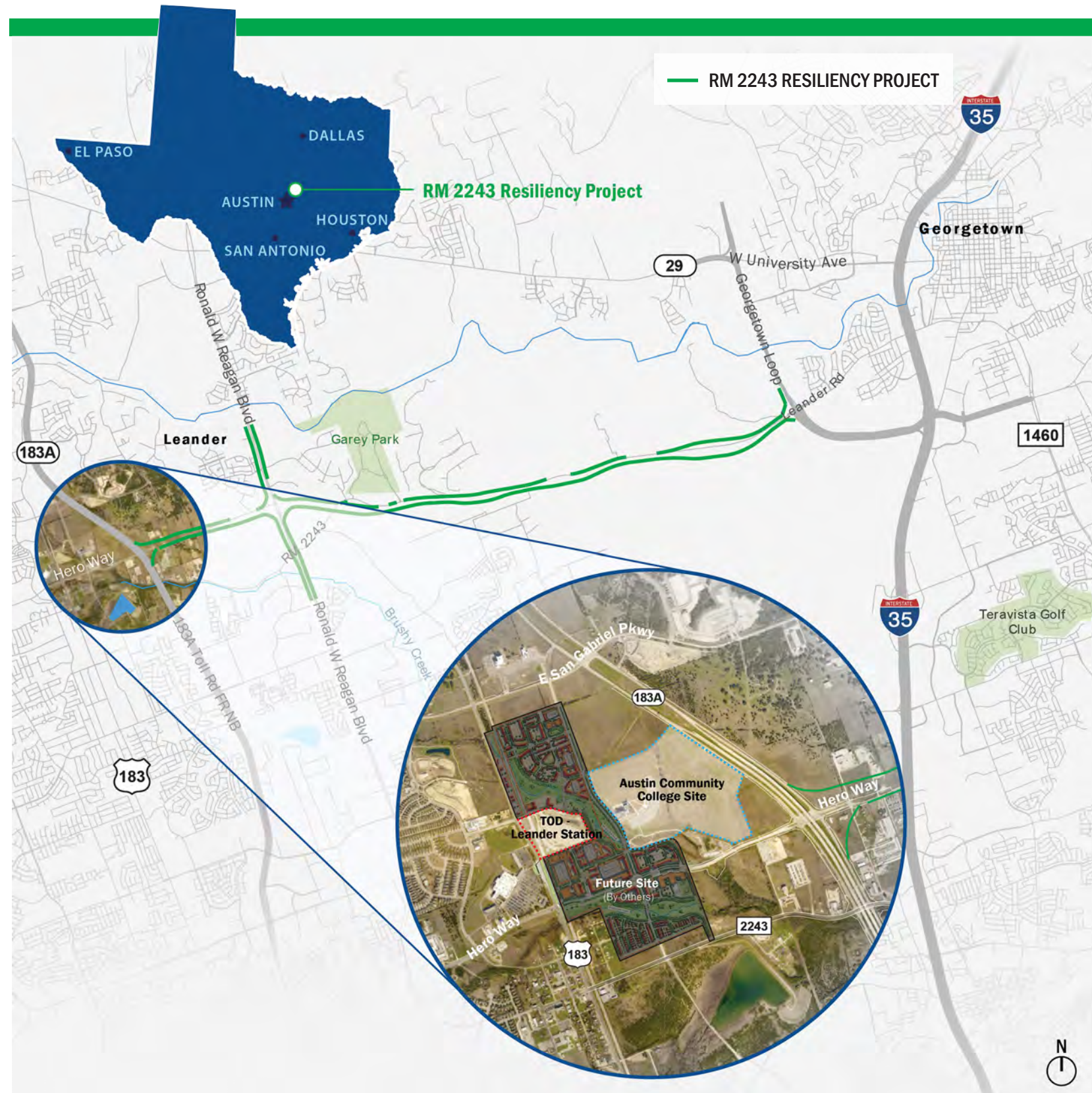


RM 2243 Resiliency Project

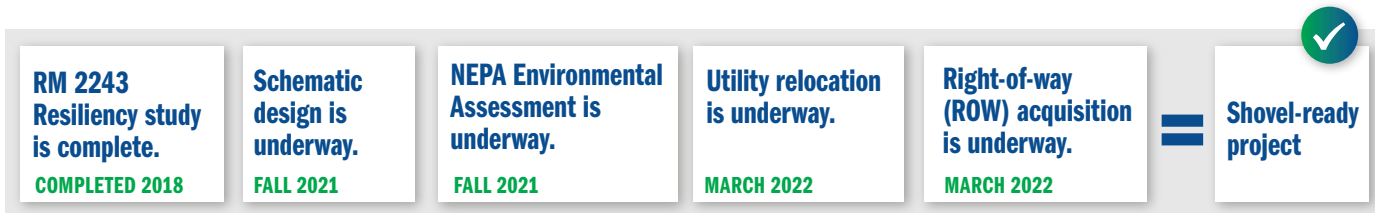
The RM 2243 Resiliency Project will modernize a segment of an existing transportation corridor that is critical to connecting major intermodal facilities to transit oriented development between the City of Leander and City of Georgetown, an area experiencing the highest population growth nationwide when compared to similarly sized cities. This project is consistent with Williamson County, State of Texas, and federal initiatives to foster American job creation, promote safe trips to transit facilities, reduce obsolete facilities, and improve quality of life for all residents.



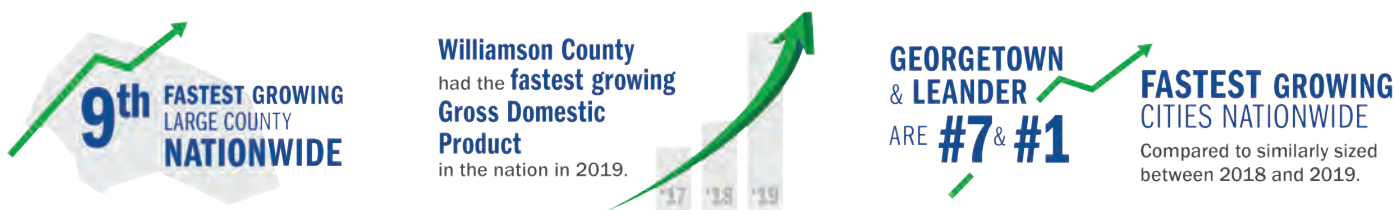
RM 2243 Resiliency Project

Williamson County is requesting \$25 million in construction funds, to match \$26.4 million in stable local funds committed to the project. Williamson County has effectively managed large projects and has the ability to obligate matching funds via sustainable revenue sources.

Williamson County has begun preparing for implementation of the improvements, which were shared at one previous public meeting and have very strong local support, while making efforts to align with potential funding opportunities:



The investment is vital to the economy of Central Texas, and aims to provide safe and reliable roadways in an area of rapid population growth—as of 2019 per U.S. Census:



TxDOT and Williamson County have partnered to develop this project to meet the current and future needs of the area, with the support of Cities of Georgetown and Leander.

Safety & Mobility:

- Provides improved multimodal access to future Capital Metro rail line.
- Supports movement and improves safety of freight and passenger vehicles by widening the existing travel lanes and straightening the curves.
- Increases livability and equitable access to transportation users of all abilities by providing space and connections for future shared-use paths within the project limits.
- Promotes environmental resiliency by modernizing existing drainage facilities to the current FEMA floodplain requirements.
- Contributes to the sustainability of sensitive habitats by constructing improvements to water quality measures to reduce runoff.
- Improves safety of roadways for users by constructing improvements to current design standards.
- Reduces bottlenecks caused by obsolete infrastructure while potentially reducing idling vehicle traffic.
- The project was designed to accommodate capacity expansions as needed for future population growth.

Economic Development:

- Facilitates access of suburban and rural residents of the Cities of Georgetown and Leander to nearby high-paying technology, light industrial, and retail jobs including those generated by the new Apple campus and the Tesla Gigafactory, which will provide a total of 20,000 jobs.
- Improves access to a planned commuter light rail stop, which is programmed as part of a bond measure to complete Project Connect's Red Line. The City of Leander and Capital Metro completed conceptual planning for transit-oriented development.
- Improves access to the ACC San Gabriel Campus by tying RM 2243 into existing Hero Way.
- Adds to the regional economic vitality by advancing racial equity and reducing barriers to opportunity via affordable transit options.