



INTRODUCTION

HBO Max has recently begun principal photography for a new limited series titled *Love & Death*. Recounting actual events that took place in Wylie and McKinney, Texas between 1978 and 1980, the story is based on the 1984 *Texas Monthly* article, “Love and Death in Silicon Prairie” and will be filming in Central Texas until April, 2022. It stars Elizabeth Olsen and Jesse Plemons.

We currently have filming locations in Seguin, Lockhart, Bastrop, Austin, Coupland, Hutto, Kerrville and Killeen. We are presenting today with the hope that we may include Georgetown in our production.

Early in our preliminary location scouting, our director and producers visited Georgetown and immediately fell in love with the downtown area and historic Square. With its beautifully preserved architecture, it is apparent that Georgetown is unmatched in its multifaceted offerings.

Georgetown has also proven to be film-friendly and has experienced the positive economic impact filming can have on a community. We want to commit our time and money to making this show include the unique look Georgetown has to offer and in that spirit, contribute fiscally to community in the process.

We will be consulting with numerous city, county, and private historical entities and local merchants to formulate the best plan of execution possible. Additionally, we plan to apply for appropriate permits, adequately notify businesses, and provide location fees to those affected by our presence.

Our goal is to film in Georgetown the last week of February into the beginning of March. If approved, we will be employing in excess of 180 local background actors in addition to our more than 70% local Texas filming crew. Our estimated budget to cover the costs of location fees, support fees, permits and labor in Georgetown alone would amount to approximately \$424,000.00. Total costs to be spent in Williamson County overall are estimated to be around \$660,500.00.

The scenes we would like to film would involve exteriors of the Square, the old jail, The Justice Center and the steps of the historic Courthouse. We also have interior courtroom scenes – those will be shot on our stage in Kyle, TX on a set whose design and construction is based on the historic Williamson County courtroom. Our big ask, and the one on which this proposal hinges, is consideration to allow us to film interior scenes in some of the common spaces of the Courthouse – namely the rotunda stairs and corridors. Our interiors make up a small portion of the work – the bulk of which is exterior and during daylight hours. With your guidance we are hopeful these interior scenes could be planned such that they are conducive to the Courthouse’s schedule.

The next few pages outline the scope of work and our proposed activities. We appreciate your consideration and look forward to the prospect working together on *Love & Death*.

Proposed Filming Locations

Williamson County Historic Courthouse

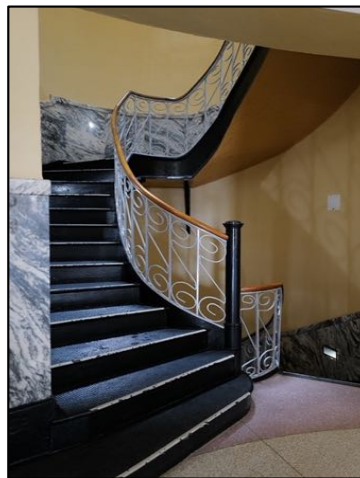
710 S. Main Street, Georgetown, TX 78626

EXTERIOR GROUNDS



- all exterior courthouse grounds
- courthouse steps
- actors to enter and exit courthouse doors

INTERIORS

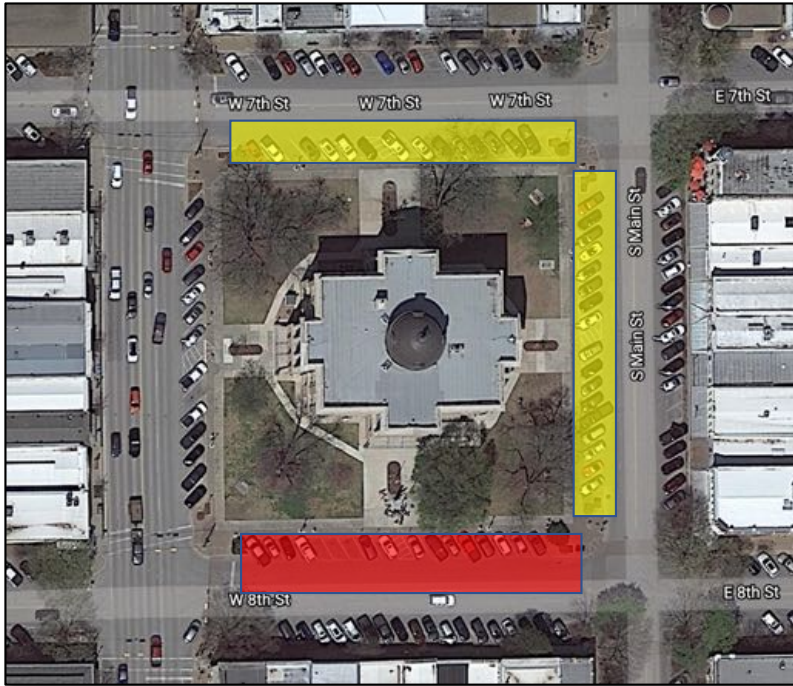


Common Spaces:

- staircases
- corridors
- rotunda
- hallways

In order to minimize our impact on the community we will be building and filming all courtroom scenes at our stages in Kyle, TX.

REQUESTED TRAFFIC CONTROL PLAN EXTERIOR COURTHOUSE



LEGEND:



= ITC



= RESERVED PARKING

- Request Intermittent Traffic Control on W. 8th Street
- Request reserved parking on W. 7th St and S. Main Street

**(to be scheduled in accordance with City and County approvals)*

We would seek approval and compensate all affected businesses.

Williamson County Sheriff's Office
508 S. Rock Street Georgetown TX 78626

SALLY PORT



- filming interior of sally port

EXTERIOR



- filming actors entering and exiting the sally port at Sixth Street

Permissions for the above coordinated with Sheriff Mike Gleason, Williamson County Sheriff's Office

Williamson County Justice Center

405 Martin Luther King Jr. Street, Georgetown, TX 78626

EXTERIOR GROUNDS



- exterior courthouse grounds
- actors to enter and exit courthouse doors

INTERIORS



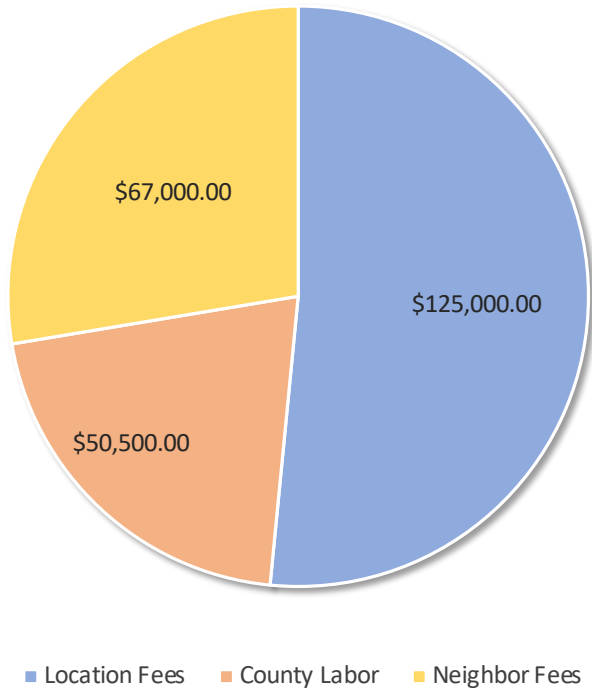
- courtroom • hallway
- requested courtrooms: 368th or 425th district*

Approvals processed through Ronald Morgan, Director, Williamson County Justice Center

ECONOMIC IMPACT

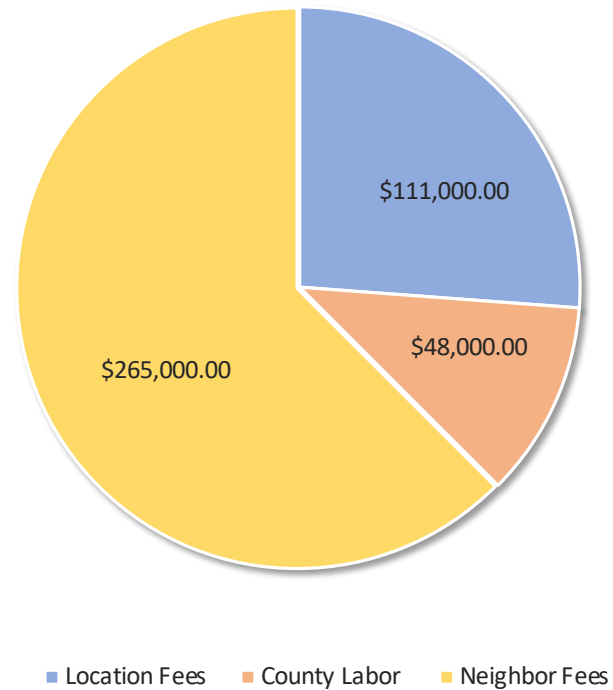
To-Date Economic Impact in Williamson County

\$242,500.00



Projection of Future Revenues for Georgetown

\$424,000.00



TOTAL ESTIMATED REVENUE FOR WILLIAMSON COUNTY: \$666,500.00



COMMUNITY SUPPORT



STATE OF TEXAS
OFFICE OF THE GOVERNOR
TEXAS FILM COMMISSION

GREG ABBOTT
GOVERNOR

Thursday, July 15, 2021

To Whom It May Concern:

Mr. Zachary Heine, the bearer of this letter, is a Texas-based Location Manager currently working on a HBO television series that is in preparation to begin filming in Central Texas. Mr. Heine has worked in conjunction with the staff of the Texas Film Commission for many years and on this particular project, the professional production team assembled is well-known and respected in the television production industry.

The Texas Film Commission, a division of the Office of the Governor, was established in 1971 to serve the needs of creative industries in Texas. A large part of our work includes assisting production companies with preliminary research and locations guidance. Mr. Heine and his production team have expressed an interest in utilizing the Williamson County Courthouse as a potential filming location, as it fits the needs of their project. Any assistance that you may be able to provide to him and his team regarding this matter would be greatly appreciated.

Television projects such as this create substantial economic impact opportunities for communities across the state of Texas and make a sizable contribution to the state's economy through employment of hundreds of local, Texas-based crew and cast members, rental of equipment and facilities, and the many goods and services purchased for use in production. The Texas Film Commission, which helps promote the state as a destination for television, film, commercial, visual effects, animation, video game and digital media production, has attracted \$1.66 billion in local spending from 2007-2020.

We thank you in advance for your time and thoughtful consideration of Mr. Heine's request. Please feel free to contact Mr. Heine or myself with any inquiries. I can be reached at 512-463-9200

Sincerely,

Kim LeBlanc
Production & Community Relations Specialist

P.O. BOX 13246 AUSTIN, TEXAS 78711 * (512) 463-9200 FAX (512) 463-4114
www.texasfilmcommission.com * film@gov.texas.gov

Austin American-Statesman
SERVING OUR COMMUNITY SINCE 1871

"We were happy to share our beautiful, historic worship space as a part of the show, Wegner said of the church, which was built in 1902.

"There's a spirit here that's palpable, and we were grateful to share that with the world.

It was a nice opportunity to be a part of the arts industry that taps into something about our human experience and making meaning of that through film and storytelling."

-Rev. Katie Wegner,
Hutto Lutheran Church

Austin American Statesman article: October 8, 2021