

November 12, 2021

Johnny Grimaldo
Senior Purchasing Coordinator
100 Wilco Way, Suite P101
Georgetown, Texas 78626
johnny.grimaldo@wilco.org

**Re: RFQ for Design and Construction Administration Services for
Williamson County Juvenile Justice Center Addition**

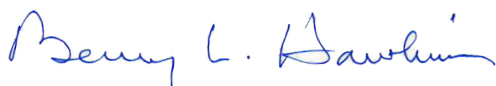
Dear Mr. Grimaldo,

BLGY is very excited that funds have been obtained to proceed with improvements planned for Williamson County Juvenile Justice Center and would like very much to receive opportunity to provide architectural/engineering (A/E) services. Your vision for the Juvenile Justice Facility will be transformational for not only the youth of Williamson County, but the entire community. We know that our team has the ability and qualifications to walk with you and bring this vision to reality. Our strengths include:

- Strong passion for enabling versatile benefits to students – and **all** stakeholders.
- Diligent, innovative A/E performance on WILCO projects – **regardless** of project size.
- Exceptional juvenile justice subconsultant, **TreanorHL** – recognized **nationwide**.
- No errors and omissions claims – for **decades**
- BLGY President pre-BLGY public career – **directed** 100's of millions \$\$\$ of improvements.

It has been a pleasure to provide A/E services to WILCO to date wherein BLGY has truly felt honored to have been selected to accomplish the wide variety of assignments awarded. We commit to continue our professional efforts to meet needs and expectations in talented, pleasing fashion if provided opportunity to do so, which we would like very much to receive.

Thank you,



Benny L. Hawkins, AIA, President, CEO

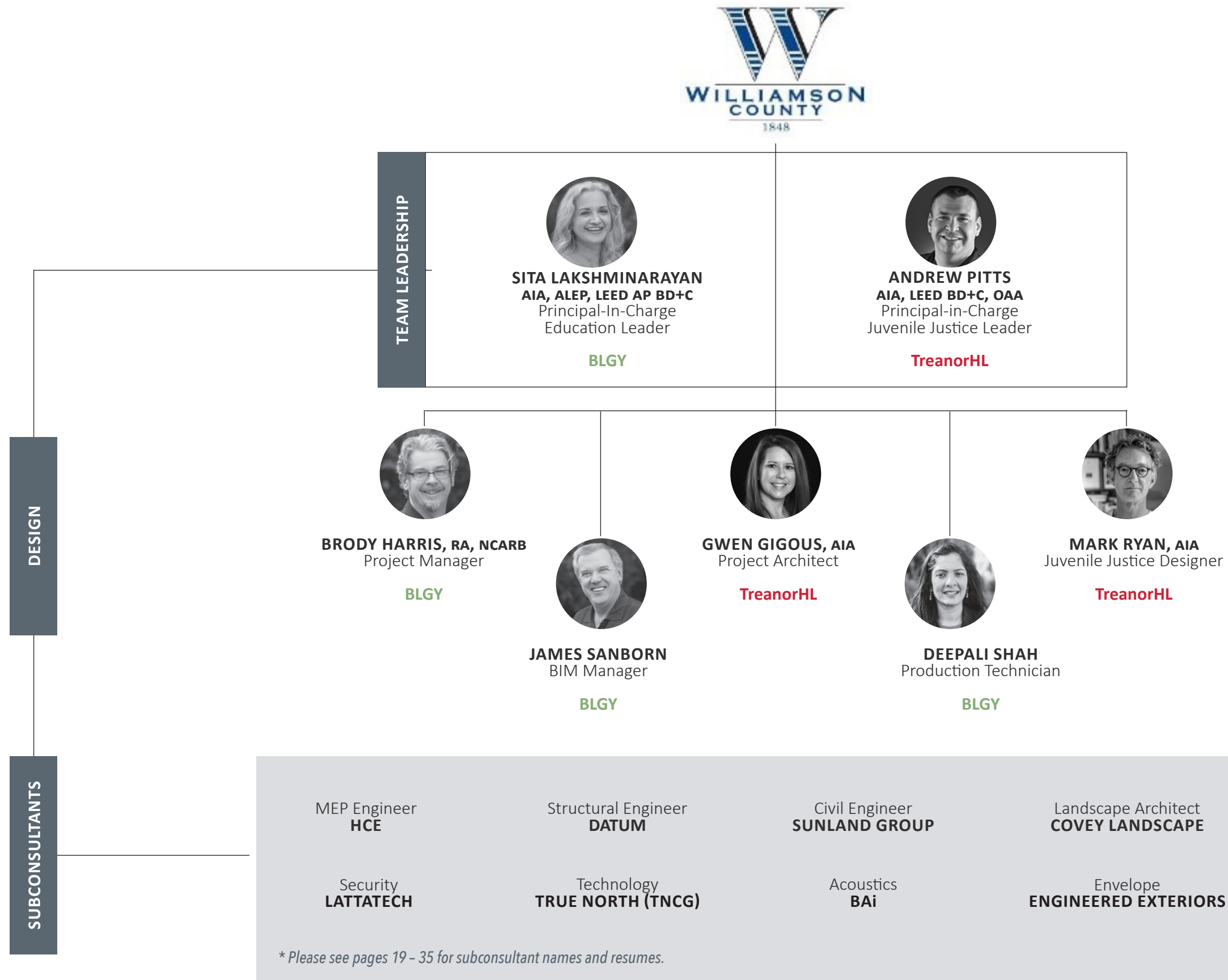
Company Name: BLGY Architecture

Physical Mailing Address: 8001 Centre Park Drive, Suite 150
Austin, TX 78754

Email and Phone of Contact: BennyLHawkins@BLGY.com / 512.977.0390 office

TBAE Number: BR918

2 ORGANIZATIONAL CHART



We recognize the county will provide a majority of the Security and Technology services. We have included consultants that may serve as a design reference to assist in the project.

3 PROCESSES

Description of the design and construction processes proposed for this facility.



“...the deeper kids go into the juvenile justice system – and the tighter the security in which they’re detained – the less likely it is that they will ever be rehabilitated.”

- Youth Advocacy Programs, Inc.

the power of architecture and the built environment. We are keenly focused on the positive potential of environments to aid in the process of treatment and rehabilitation of the youth in your community. This focus extends to both the kids in your care – their need, and flexibility – as well as your staff. We never forget that in many ways the true long-term residents are the staff, and they too need to be excited about coming to work every day and feel valued

We keep this quote from Youth Advocacy Programs, Inc. at the forefront of our minds. It certainly speaks to an operational philosophy, but for us it also speaks about

and stimulated to accomplish their best work. We are passionate about this realm of the possible and making a meaningful contribution.

Trauma-Informed Design. Major sources of childhood trauma are adverse childhood experiences, or ACEs. The Centers for Disease Control defines ACEs as all types of abuse, neglect, and other potentially traumatic experiences that occur to people under the age of 18. Examples of ACEs include exposure to physical, emotional, or sexual abuse; physical and emotional neglect; witnessing violence, serious mental illness, or substance misuse in the home, poverty and related stressors, systemic racism and related violence and discrimination, poor health, involvement with child welfare and juvenile justice systems and collective adversities such as the coronavirus pandemic. Children and Adolescents who experience trauma through life circumstances or events often have difficulty with attention, memory

3 PROCESSES

and learning as well as regulating their emotions. Spaces and programs designed for resilience would benefit from addressing social equity, safety and justice. Personalization, flexibility, collaboration and community connection must also be considered as vital design principles for trauma-informed design solutions.

A juvenile treatment and detention center is more than an adult detention center with different colors or materials. While they must be durable, safe facilities with plenty of security designed in, the feel must be less institutional and more familiar. Attention to natural light, program spaces for education, recreation, and counseling, and a calming environment can be successfully incorporated into a facility with flexibility for classification, clear sight lines, proper sound and sight separation, and the level of security needed for individuals with more serious offense histories.



Williamson County Children's Advocacy Center

Every Building Implies a Community. All values of a culture reside in the buildings and space that it creates, at specific times in history. The architecture and landscape should be harmonized to enable the transformation from an isolated depressing environment to a campus that is in, and of, a supportive and restorative community. Brain science research is consistently confirming what humans have intuitively always known: spending time in nature is vital to health, healing and calming the

mind. The design should weave together green spaces and pathways to increase the number of outdoor destinations for the youth and staff for healing and respite.

Transformation + Change. Juvenile justice agencies are increasingly incorporating evidence-based practices and research on the effects of trauma on youth to plan, design and build new juvenile facilities and systems of care. Trauma-informed systems of care meant to restore and rehabilitate should:

- Protect privacy needs by creating calming spaces to reduce anxiety, fear and anger,
- Eliminate intimidating, elevated platforms that place staff above residents,
- Engage a resident's family and community,
- Bring abundant borrowed or natural daylight into housing areas to promote well-being,
- Provide views of nature,
- Employ the least restrictive methods necessary to ensure rehabilitation,
- Promote positive development interventions,
- Deliver a comprehensive system of care, and
- Include multipurpose complexes that fill gaps and increase access to crisis intervention services for all parties involved.
- Include multipurpose complexes that fill gaps and increase access to crisis intervention services for all parties involved.

Collaborative Environment

These projects are never accomplished in isolation, they require commitment and teamwork. Collaboration with our clients, and with each other, is central to the practices of BLGY Architecture & TreanorHL. We are firms formed on the principles of PROCESS, COLLABORATION, and IMPACT. With equal amounts creative and pragmatic, we explore the prospect of 'what if' but always filter it through the lens of budget, time and project goals. Strong bonds and relationships are forged by collaborating to build extraordinary places that serve the combined needs of the users, the client, and the community.

3 PROCESSES

Our process begins with a dialogue—we listen first. We engage with you to unlock untapped ideas and build consensus around a meaningful vision. We unlock innovation by balancing expertise with a belief in the power of imagination—in which anything is possible. We re-think a question: shake it up, turn it on its head, tear it down, and build it back up again—to breathe in new air; the oxygen of inspiration and innovation. Through a variety of formal methodologies, we help organizations expose and explore untapped ideas with meaning across complex organizations—to stretch beyond standard, compartmentalized thinking.

Design Creativity and Innovation

**We are what we repeatedly do.
Excellence, then, is not an act, but a habit.”**

We try to practice excellence in everything we do, daily. We see holistic design as the marriage of the pragmatic and the poetic. These facilities absolutely need to be safe and secure, they require optimal sight lines, need to take into account durability and long-term maintenance, but they also need to transcend functional basics in order to create environments that are inspiring and conducive to learning and growing.

We are dealing with a captive audience, why not create environments that engage them and stimulate them?

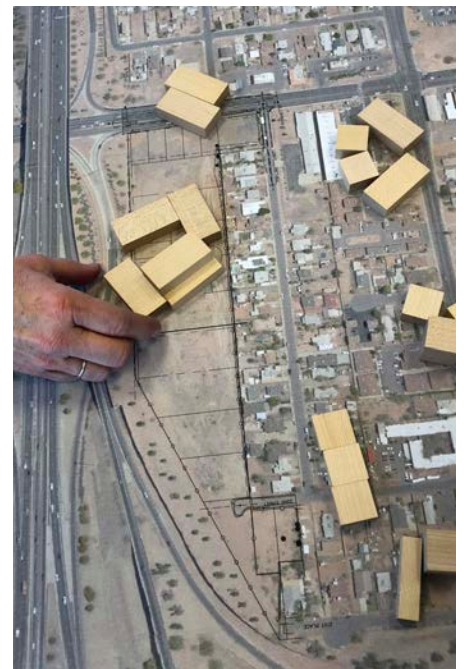
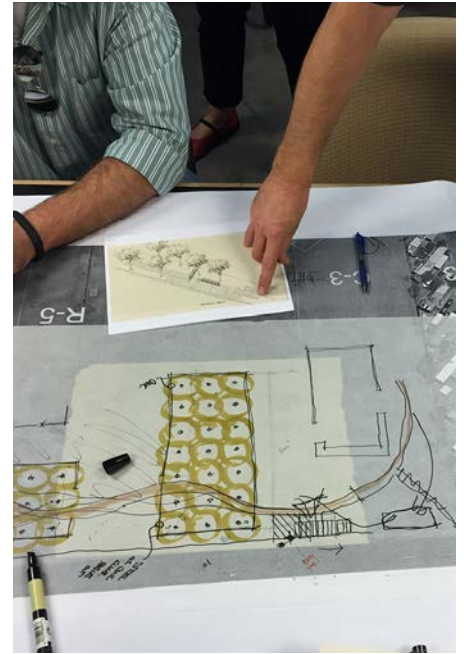
We often see innovation is small ways, simple ideas with the potential to be profound.

Communication + Engagement

Effective communication is required for a truly innovative, integrated process. Our team starts every meeting with a review of the project goals, so they always stay top-of-mind. We will continually communicate and manage our sub-consultants to ensure we are coming up with groundbreaking solutions and the best possible design outcomes.

Listening and engaging in conversation are two different things. The design process is a two-way conversation focused on solving the challenges and opportunities associated with the Williamson County Juvenile Justice Center and actively engaging the stakeholders to get involved through user group meetings, design sessions, tours, and visioning and goal-setting sessions.

We “put the pencil in your hand” because we find that the best designs are driven by the stakeholders. With our guidance and years of expertise, we will lead the team of stakeholders to ensure that expectations are met. The final design and aesthetics will be the right fit for Williamson County. To keep the stakeholders, elected officials and the community updated at all project stages, from conceptual design through to construction, we use a wide range of actions, processes, and tools, including:



3 PROCESSES

- **Stakeholder Meetings:** We use focus groups, charrettes (workshops), and meetings to understand the collective wants, needs, hopes, and dreams of all the stakeholders.
- **3D Visualization:** We translate ideas and concepts gained at stakeholder meetings into a shared vision. Through site imagery, modeling, and 3-D renderings, we communicate plans at additional design meetings and solicit more input. 3D tools also maximize quality control.
- **Community and User Group Meetings:** Community meetings are often held at design milestones to solicit feedback and answer any questions or concerns about the project's progress. User groups, consisting of staff from juvenile as well as other county departments, also assist our team with making decisions and provide input during the planning and design process

Value of a Facility Programming Study and Concept Design

To understand the potential solutions for your juvenile facility we must first understand the program requirements. A programming review will provide you with an understanding of your space needs and will inform the design when developing a plan to facilitate the remodel and addition to this building.

To ensure functional facilities for your team, it is essential to understand all aspects of the operations, county departments, security, and an efficient work environment. The development of this programming document will guide the county and the stakeholders in

determining the extent of the work and the correct locations for each program area. Additionally, the facility programming and resulting concept design will provide the county with a framework for a vision, understanding of facility upgrades, and phasing plans to ultimately achieve a secure and functioning facility for staff, juveniles and the public.

Project Design

Once priorities have been set and consensus established, the core design team will conduct a series of workshops with all stakeholder groups to develop a concept and final design for organizing the major building components. These workshops will conclude with diagrams and drawings that the design team will analyze for:

Site: A site concept will allow for appropriate circulation around the property. Separation of vehicular circulation between staff, the public, law enforcement and deliveries is imperative and zoning the site to ensure all areas of future development can be maximized and effective outdoor space is realized.

Security: Security perimeter zones will be established, and traffic patterns identified for juvenile, staff and public circulation. Juvenile facilities need to be



3 PROCESSES

cognizant of the security while not portraying a typical “jail look.” Developing internal courtyards allows the building to act as the secure perimeter eliminating the need for imposing fences and razor wire.

Size & Cost: Cost estimates will be determined early and verified throughout design. Costs will be controlled by managing growth of the scope. These costs will include construction costs, project costs, and future operational costs.

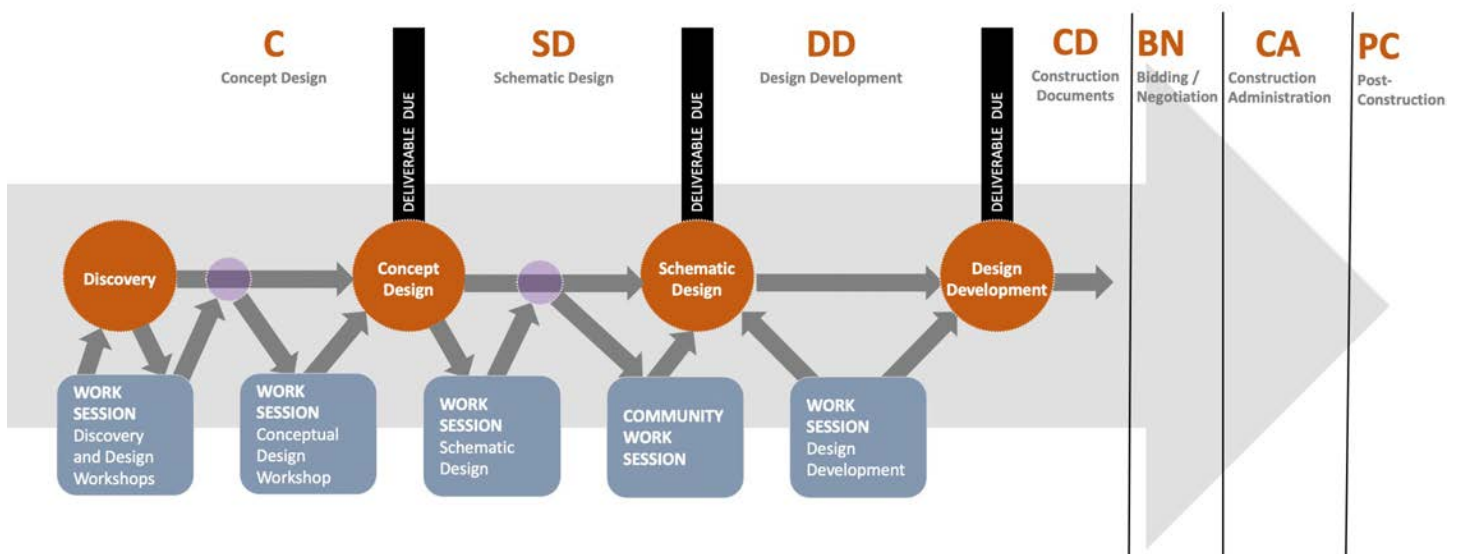
Building Systems: Structural and mechanical systems are designed to ensure efficiencies and budget conformance. As a 24/7/365 facility, the type of mechanical systems is critical to the long term success of the project.

Construction Phasing: Plans will be developed to allow continued operations during construction and minimize the construction footprint. As a secure facility required to remain operational throughout the construction, we will develop life safety and security plans for each construction phase.

Teaming & Project Schedule

The BLGY+ TreanorHL team will work together seamlessly throughout the design and project delivery process. TreanorHL as Juvenile Justice Expert will lead the Discovery Process, Conceptual

Design Workshops and Work Sessions leading up to the Schematic Design. BLGY as Prime Consultant and Education Expert will be a partner through all the workshops bringing subject matter expertise to discussions related to the educational component of the facility. Simultaneously, BLGY will examine envelope options, project budget, product research and specification. BLGY's role as local architect will increase as the project progresses through Design Development, Construction Documents and Construction Administration. TreanorHL will visit the project site a few times during the Construction Administration Phase to ensure that design expectations are being met, with BLGY leading the Construction Administration Phase. BLGY's history with Williamson County and familiarity with the County facilities' processes and preferences learned over several County projects in the past six years, will effectively bolster and augment TreanorHL's expertise and success with designing Juvenile Justice Centers throughout the Country. No other competitor owns this advantage. Moreover, with the commitment to youth education, rehabilitation, mentoring and life skill development upheld as core values within both BLGY Architecture and TreanorHL, we are confident that Williamson County's vision for the Juvenile Justice Center Expansion will be entrusted with the right team - OURS!



3 PROCESSES



Brazos County Juvenile Justice Center Expansion

TREANOR**HL**

BRYAN, TEXAS

As in many states, the pendulum of the Texas juvenile justice system has swung from the days of “three strikes” and scaring youth offenders straight, to trauma-informed, restorative justice practices. This, along with changes in age requirements for juvenile offenders, required Brazos County to review their existing facility and their future needs. Collectively, the stakeholders desired to address juvenile detention requirements with an evidence-based design model.

TreanorHL completed a feasibility study and master plan for the expansion to the existing facility addressing additional housing, new intake and medical facility, educational areas, and support spaces. The vision centered on a trauma-inspired facility that supported the youth from the moment they entered the facility to the support network once they have left.

The facility houses 32 additional youth in four 8-bed housing unit. Three of the units house youth in single bedrooms with direct access to exterior recreation and outdoor areas, a multi-purpose room, and an abundance of natural light. The fourth unit is a multi-person housing unit in a dormitory setting. Each bedroom has a large window designed to allow abundant natural light but controlled views to comply with PREA standards. A central courtyard, secured by the buildings and not a security fence, provide passive and active outdoors activities.

SIZE

Total Facility: 82,200 SF
New Const.: 32,000 SF
Renovation: 21,000 SF

COST

\$17,399,000

COMPLETION

June 2021

REFERENCE

Charles Wendt
Purchasing Agent
cwendt@brazoscountytexas.gov
979.361.4292

Linda Ricketson
Director, Brazos County Juvenile
Services Department
lricketson@brazoscountytexas.gov
979.823.3544

3 PROCESSES



Racine County Youth Development and Care Center

RACINE, WISCONSIN

TREANOR**HL**

Initiated through a State grant program, this 70,000 square foot facility is envisioned as a completely new model trauma-inspired, education focused, treatment and youth care facility to serve Racine County as well as seven of the surrounding counties. In addition to public functions and the juvenile courtroom, the new campus will include education, gymnasium, learning kitchen and dining, visitation, a medical/dental clinic all organized around a central courtyard/quad space that serves multiple roles of outdoor recreation, open-air classroom, extended dining, activity and education space.

SIZE

70,000 SF

COST

\$42,000,000

COMPLETION

2022

REFERENCE

Kristin Latus
Deputy Director,
Human Services
Racine County
262.636.3774
kristin.latus@racinecounty.com

3 PROCESSES



Wyandotte County Juvenile Justice Center

KANSAS CITY, KANSAS

TREANOR**HL**

The Unified Government of Wyandotte County and Kansas City, Kansas worked with the team of TreanorHL, HOK, and CGL to complete a Jail Needs Assessment and Feasibility Study to review their current facilities in 2015. From this study, a multi-phase master plan was developed to address the needs determined in the study. The first phase of the master plan was to construct a new Juvenile Service Center to house juvenile detention, non-detention juvenile programs, and family courts across the street to the north of the existing jail and adjacent to the existing family court building.

The project site is located in downtown Kansas City, Kansas, just west of Highway 69 on the northeast corner of Ann Avenue and Allis Court. The site includes a 1.24 acre City owned parcel that is currently an existing parking lot, and to the west half an acre (0.5) of a 2.04 acre County owned parcel, on which the Wyandotte County Correctional and Court Services Building is located.

The building is three stories with the lowest level containing the detention housing and support spaces; the second level being the main public entry along with non-detention program space and office support spaces; and the third level housing the courts and court support spaces.

SIZE

35,000 SF

COST

\$26,300,000

COMPLETION

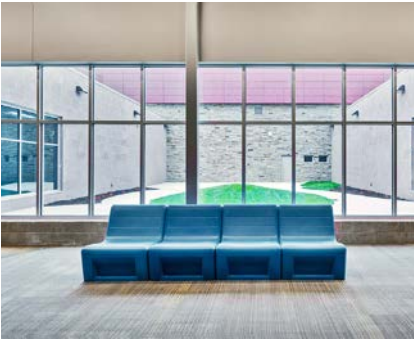
2020

REFERENCE

Sheriff Don Ash
913.573.5040
dash@wycokck.org

Terri Broadus, Juvenile
Administrator with the
Unified Government of
Wyandotte County
tbroadus@wycokck.org
913.573.2865

3 PROCESSES



Jasper County Juvenile Services Center

JOPLIN, MISSOURI

TREANOR**HL**

The old Jasper County Juvenile Hall was closed by the fire marshal as unfit for its use in 2015. Completed in 2019, the new Jasper County Juvenile Center is more of a resource and intervention center than detention center. This youth-focused facility is a key urban intervention, open and available to the community. With an approach that prioritizes alternative education, the center provides treatment and diversionary programs whenever possible, accommodates detention needs when necessary, with both elements linked by the core services provided by the judiciary and administration.

Each space and programmatic element is organized around one of two interior courtyards—one for education and alternative programs, the other serving detention operations—providing natural light for each activity and function throughout. In its formal expression, the design attempts to balance civic presence, community connection and the fundamental desire for positive youthful development. Safety and security are the common mandates for these facilities. The vision was to make a facility safe and secure while simultaneously transcending those basic foundations in an attempt to embody a larger aspirational vision.

The design of the facility allows court and juvenile officials to combine services into one facility, therefore eliminating the need for families to traverse through complicated service delivery systems. This service delivery model is extremely effective because the building is a “one-stop-shop” that includes detention, administration offices, courts and programs/education spaces, in addition to detention. Program spaces are flexible allowing schools to provide educational services during the day, while resource providers deliver in-house treatment, counseling, and other therapeutic interventions at night. The design and function of the facility has resonated within their community, resulting in citizens volunteering to help troubled youth. A win for the kids; a win for the community.

SIZE
30,000 SF

COST
\$8,825,622

Completion
2019

REFERENCE
Erik Theis
Court Administrator
417.625.4310
erik.theis@courts.mo.gov

3 PROCESSES



Next Generation Juvenile Campus

TECUMSEH, OK

The Central Oklahoma Juvenile Center campus has been in use as a juvenile facility since 1919. The Oklahoma Office of Juvenile Affairs (OJA) desired a new therapeutic environment to house males and females in a modernized facility. While many renovations and additions have occurred over the years, the facilities no longer sufficiently support the needs of the youth or staff. OJA initiated a project to create a therapeutic community by modernizing the existing campus and building new, normalized juvenile housing.

The 144 youth will be housed in nine cottages; each cottage housing 16 individuals in private bedrooms. Each cottage includes a living room, dining area, staff offices, counseling and multi-purpose room and a secure outdoor courtyard. All but one of the male cottages will be minimum security, allowing youth to freely move within the facility. Each cottage provides a trauma-inspired housing and living setting to allow a normative environment. Youth will have access to an abundance of natural light, views to the exterior, and the ability to express their feelings on chalk walls.

The intake and medical facility continues the trauma-inspired design philosophy. Our team designed the intake area (or the front door for incoming youth,) to respond in a similar manner as the housing cottages. Natural light, color, and natural materials provide a more welcoming environment to reduce anxiety and stress as youth arrives to the facility. The building is also home to the campus medical clinic and mental health staff. The design is intended to provide a healthier place for staff to work as well as improve the ability to provide therapeutic places for youth to heal and learn.

TREANOR**HL**

SIZE

9 housing cottages

Mens Cottages: 8,070 GSF

Womens Cottages: 10,050 GSF

Intake / Medical: 17,200 GSF

COST

\$46,000,000 Budgeted

COMPLETION

2021

REFERENCE

Terry Smith, Next Generation

Facility Coordinator

405.530.2820

terry.smith@oja.ok.gov

4

AVAILABILITY OF TEAM

Information regarding the Availability of Project Manager, task leads and relevant staff

	WILCO Juvenile Justice Center Addition	WILCO Children's Advocacy Center	Round Rock ISD Spicewood Elementary School Renovations	Austin Community College (ACC) Cypress Creek Roof Renovations	Austin Water Parking Garage Renovations	Nueces Power Equipment Warehouse	Business Development/Marketing
SITA LAKSHMINARAYAN	35	10	15	15	10	5	10
BRODY HARRIS	40	20	-	10	15	15	-
JAMES SANBORN	50	20	10	-	10	10	-
DEEPALI SHAH	50	-	-	-	-	-	-

	WILCO TX Juvenile Justice Center Addition	Williamson County, TN Juvenile Justice Center Addition	Midland, TX County Juvenile Study	Racine County, WI Juvenile
ANDY PITTS	25	15	10	5
GWEN GIGOUS	20	20	10	10
MARK RYAN	10	30	-	15

“The idea is to address the root of the cause instead of simply treating symptoms. Through an education- based, rehabilitative focus, we are taking a more proactive approach through mental-health programs, life skills, behavioral treatment, mentoring programs, community engagement, and much more. This facility will allow us to provide the programing required in a more normal setting.”

Linda Ricketson,
Executive Director of
Brazos County Juvenile Service

Stony Point High School



City of Austin Public Safety Training Facility



BENNY L. HAWKINS, AIA, NCARB **Project Executive**

EDUCATION

Bachelor of Architecture
**University of Texas
at Austin**

PROFESSIONAL REGISTRATION

Registered Architect
Texas #5486

Registered Interior
Designer, Texas No. 1280

National Council of Architectural
Registration Boards (NCARB)
Certification #39775

American Institute
of Architects

Mr. Hawkins has enjoyed participation in decades of successful A-E project delivery assignments in his half-century career that includes 15 years of construction management roles within the Austin Independent School District and the City of Austin wherein he was Manager, Office of Facilities Planning & Construction in the latter. While with the City his duties included airport interior upgrade and major roofing replacements without disruption to on-going operations. His school district successes as Executive Director of Construction Management included his opening of eight (8) new school campuses within same calendar year.

At BLGY, Mr. Hawkins particularly capitalizes upon his lessons learned in his public service career wherein he was accountable for working with many design and construction professionals to deliver a vast variety of quality built environments on time and within budget. He relies upon that knowledge to establish BLGY team performance at a level that he knows will enable client appreciation of services and desire to rehire BLGY should need for further assistance arise.

Staff meetings and other internal communications regularly occur to optimize benefit from capitalizing upon Mr. Hawkins' vast knowledge gained from hard knocks personal experience particularly with public agencies to assure deserved project success and client satisfaction.



SITA LAKSHMINARAYAN, AIA, ALEP, LEED AP BD + C Principal-in-Charge

Sita has provided design leadership for several multimillion-dollar public projects during her long tenure with BLGY. As Principal-in-Charge, she will be the lead point of contact and responsible for overall team management. She will guide and inform the design process to ensure that all planning and design goals are preserved. Sita has over 27 years of experience in the industry and brings both seasoned expertise and passion for serving community-based projects. As a LEED Accredited Professional, she believes that to be truly sustainable, all public facilities must be outgrowth of their community, designed to be environmentally responsible, and flexible to adapt to longer-term changes in technology and building program. BLGY's Managing Principal, Sita Lakshminarayan, AIA, ALEP, LEED AP, is one of less than 200 Accredited Learning Environment Planners worldwide. The ALEP designation reflects commitment to the highest standards and best practices in Education Planning and Design.

EDUCATION

Accredited Learning
Environment Planner,
**Advanced Academy for
Learning Spaces**

Master of Architecture
**University of Texas
at Arlington**

Master of Fine Arts
Bachelor of Fine Arts,
University of Madras, India

PROFESSIONAL REGISTRATION

Registered Architect
Texas #18802

LEED AP (BD+C), #70955

AFFILIATIONS

Past President, CTX Chapter
Association for Learning
Environments (A4LE)

Board Member, Southern Region
Foundation, Association for
Learning Environments (A4LE)

RELEVANT EXPERIENCE

- Williamson County Children's Advocacy Center
- Kyle Public Library, City of Kyle
- Manor City Hall, City of Manor
- Blazier Intermediate School, Austin ISD
- Joe Lee Johnson Elementary School, Round Rock ISD
- Shadow Glen Elementary School, Manor ISD
- Guerrero Thompson Elementary School, Austin ISD
- Rudder High School, Bryan ISD
- Teague Intermediate School, Teague ISD
- Odom Elementary School Addition/Renovations, Austin ISD
- Chisholm Trail Middle School Addition/Renovations, Round Rock ISD
- Stephen F Austin High School Addition/Renovations, Austin ISD



TREANORHL

ANDY PITTS, AIA LEED BD+C, OAA Principal-in-Charge/Project Manager

For over 20 years, Andy has been involved extensively with managing justice related projects for cities and counties. He brings experience, knowledge and lessons learned from each project to your facility as well as leadership and communication skills, ensuring that each design decision is in line with project scope and desired outcomes. His expertise is in providing viable options that meet the specific needs of each client and exceed the standards of the industry.

EDUCATION

Master of Architectural
Management
Bachelor of Architecture
University of Kansas

PROFESSIONAL REGISTRATION

Registered Architect:
Texas 24324
+16 States

ASSOCIATIONS

American Institute of Architects
Academy of Architects for Justice
USGBC

RELEVANT EXPERIENCE

- Williamson County, TN Juvenile Justice Center
- Brazos County Juvenile Justice Center Expansion Bryan, TX
- Midland County Barbara Culver Juvenile Justice Center Midland County, TX
- Racine County Secure Residential Care Center for Children and Youth Racine, WI
- Jasper County Juvenile Services Center Joplin, MO
- Wyandotte County Juvenile Services Center Kansas City, KS
- Oklahoma Next Generation Residential Youth Facility Tecumseh, OK
- Johnson County Youth & Family Services Center Olathe, KS
- Lynchburg Juvenile Services Group Home Lynchburg, VA
- Woodside Juvenile Rehabilitation Center Essex, VT
- South Carolina Department of Juvenile Justice Facility Renovations Columbia, SC
- Brazos County Adult Jail Renovation & Expansion Bryan, TX
- Brazos County Courthouse Security Upgrades Bryan, TX
- Jefferson County Facilities Needs Assessment Jefferson County, MO
- West Richland Law Enforcement Center West Richland, WA
- Ellis County Law Enforcement & Courts Needs Assessment & Expansion Hays, KS
- Adams County Community Corrections Center Adams County, CO
- Delta Law Enforcement Needs Assessment and Masterplan Delta, CO

WILCO EMS Training Facility



WILCO EMS Training Facility



BRODY HARRIS, RA, NCARB Project Manager

Brody Harris has more than 25 years of experience in the construction industry, past 14 being in architectural firms. During this time, he has worked on various types of projects, including higher education facilities, city halls, libraries, government buildings, K-12, office space, retail and commercial buildings.

Brody served as the project manager and architect for the \$25 million WILCO North Campus project. His fluent management of a large team of consultants over multiple campus building and successful navigation through technical issues during design and construction was largely responsible for a successful project and repeat work from a satisfied client.

EDUCATION

Master of Architecture College of
Architecture and Urban Planning
University of Washington

Bachelor of Architecture
College of Architecture
and Urban Planning
University of Washington

PROFESSIONAL REGISTRATION

Registered Architect
Texas #26890

National Council of Architectural
Registration Boards (NCARB)
Certification #89691

RELEVANT EXPERIENCE

- Williamson County Children's Advocacy Center Addition
- Williamson County Facilities Storage Building
- Williamson County Sign Shop
- Williamson County North Campus Fueling Facility
- City of Austin Relay Department
- Williamson County Wireless Comm Building
- Williamson County Vehicle Inspection facility
- Williamson County EMS Training Center
- Williamson County Central Maintenance Facility
- Brident Dental locations from New Mexico to Texas*
- Jefferson County Library *
- Friends of Youth*

**Denotes experience prior to employment at BLGY*



TREANOR**HL**

GWEN GIGOUS, AIA

Project Architect

With 17 years of design experience, Gwen focuses on juvenile, detention, corrections and law enforcement facilities. She has participated in the design of 28 justice facility projects and served as project manager for 12 since joining TreanorHL in 2013. Gwen has managed design teams ranging from large, complex teams with upwards of 10 engineering and specialty consultants to small teams comprised of just TreanorHL staff.

EDUCATION

Bachelor of Architecture
University of Kansas

PROFESSIONAL REGISTRATION

Registered Architect: Kansas

ASSOCIATIONS

American Institute of Architects

RELEVANT EXPERIENCE

- Williamson County, TN Juvenile Justice Center
- Brazos County Juvenile Justice Center Expansion Bryan, TX
- Midland County Barbara Culver Juvenile Justice Center Midland County, TX
- Brazos County Adult Jail Renovation & Expansion Bryan, TX
- Brazos County Courthouse Security Upgrades Bryan, TX
- Jasper County Juvenile Services Center Joplin, MO
- Wyandotte County Juvenile Center Wyandotte County, KS
- Racine County Secure Residential Care Center for Children and Youth Racine, WI
- Greene County Detention Center & Sheriff's Office Springfield, MO
- Paulding County Law Enforcement Center & Sheriff's Office Dallas, GA
- Thomas County Justice Center Colby, KS
- Blue Springs Public Safety Center Blue Springs, MO
- Ellis County Law Enforcement & Courts Needs Assessment & Expansion Hays, KS
- Johnson County Downtown Courthouse Olathe, KS
- Gardner Justice Center Gardner, KS
- Moffat County Courthouse and Government Center Craig, CO
- Pottawatomie County Sheriff's Department, Master Plan and Courthouse Westmoreland, KS
- West Richland Law Enforcement Center West Richland, WA
- Jasper County Jail Joplin, MO
- Adams County Community Corrections Center Adams County, CO
- Kansas City Police North Patrol Station Kansas City, MO



TREANOR**HL**

MARK RYAN, AIA

Juvenile Justice Designer

Mark believes in the experiential power of architecture. He believes that through thoughtful planning and design, architecture can play a powerful role in helping to shape positive outcomes. Known for strategic thinking and creative problem solving, his portfolio contains a diverse array of award winning projects that help reimagine how we work, learn, and play, and how we engage our communities. In a span of just 10 years, Mark's juvenile specific work has been recognized by the AIA's Academy of Architecture for Justice three different times.

EDUCATION

Master of Architecture
Architectural Assoc. School of
Architecture
London, England

Bachelor of Architecture
University of Cincinnati
College of Design, Architecture
Art and Planning

PROFESSIONAL REGISTRATION

Registered Architect: Arizona

ASSOCIATIONS

2019 AIA AZ Architects Medal
Recipient
Arizona State University
Adjunct Professor, 2004 to
present
American Institute of Architects
AIA Phoenix Metro Chapter
President 2016
Board Member 2013-2018
AIA Arizona State Chapter
President
Board Member 2014 to present

RELEVANT EXPERIENCE

- Williamson County, TN Juvenile Justice Center
- Tarrant County Juvenile Justice Center Expansion* Fort Worth, TX
- Jasper County Juvenile Justice Center Joplin, MO
- Racine County Youth Development and Care Center Racine, WI
- Sacramento County Juvenile Hall Expansion* Sacramento, CA
- Idaho Adolescent Psychiatric Treatment Center* Boise, ID
- Johnson County Youth and Family Services Center Olathe, KS
- San Francisco Youth Guidance Center* San Francisco, CA
- Warren E Thornton Youth Center* Sacramento, CA
- Santa Clara County Juvenile Strategic Plan* San Jose, CA
- RE-JUV Temporary Juvenile Holding Facility* Parker, AZ
- Duck Valley Juvenile Services Center* Owyhee, NV
- Ridgeview Academy* Aurora, CO
- Colorado River Indian Tribes Juvenile Facility* Parker, AZ
- Sonoma County Juvenile Justice Center* Santa Rosa, CA
- San Joaquin County Juvenile Hall Expansion* French Camp, CA
- Contra Costa County Juvenile Hall* Martinez, CA
- Lane County Juvenile Justice Center* Eugene, OR
- Apache County Juvenile Detention Facility* St. Johns, AZ
- Victoria Youth Justice Project* Melbourne, Australia
- Northern Territory Youth Training* Darwin and Alice Springs, Australia

**Denotes experience prior to employment at TreanorHL*



WILCO North Campus Facilities



JAMES SANBORN

BIM Manager

James Sanborn has more than 26 years of experience in the architectural field. He has worked on a multitude of diverse projects, including **k-12 schools, universities, and private and public sector projects** including community centers, high-rise retail/residential, water treatment plants, and county facilities. Mr. Sanborn is extremely knowledgeable of CAD and has honed his skills with Revit and Lumion to create **3d graphic renderings** and videos, serving as **BLGY's BIM expert**. As BIM Manager, James **maintains standards for all the projects**, as well as educate others in the software as per needed. He manages and keeps all the software up to date and ensure all the employees have the software they need to complete their task, as well as the upkeep of the office computers and any technical issues.

RELEVANT EXPERIENCE

- Williamson County Justice Center Remodel
- Williamson County Juvenile Justice Center Expansion Master Planning
- Williamson County Children's Advocacy Center Addition
- Williamson County North Campus Facilities,
- City of Austin Public Safety Training Center
- Austin Energy Kramer Building Relay Renovation
- City of Austin Town Lake Garage Remodel
- City of Manor City Hall
- City of Kyle Library
- City of Austin Four EMS Additions
- City of Austin Montopolis Youth Sports Complex
- City of Austin New Drinking Water Laboratory
- City of Austin Grandma Camacho Youth Activity Building
- City of Austin Deep Eddy EMS Station

EDUCATION
A.A.S. Drafting &
Design Technology
Temple Junior
College 1981 (Dean's List)

**PROFESSIONAL
CERTIFICATIONS**
Autodesk Certified
Professional in Revit for
Architectural Design, 2021



DEEPALI SHAH

Production Technician

Deepali Shah has over 10 years of experience in the architectural field in all project phases from conceptual design to construction administration. She has worked on a multitude of diverse projects internationally and locally. Shah is detail-oriented, attentive, and a dedicated team member with an insatiable desire to learn.

EDUCATION

Courses and professional practice
School of Architecture
University of Texas at Austin

Bachelor of Architecture
**Rizvi College of Architecture,
University of Bombay - India**

AFFILIATIONS

National Council of
Architectural Registration Boards

Candidate for ARE

RELEVANT EXPERIENCE

- Cingular Wireless Stores in Texas, Arkansas and Colorado.*
- AT&T Stores in Texas, Oklahoma, Arkansas, Arizona, Colorado, *
New Mexico, Missouri, Massachusetts and New Jersey*
- Brident Dental from Texas to California*
- Western Dental from Texas to California*
- Zumiez Stores from Texas to California*

**Denotes experience prior to employment at BLGY*



BYRON J. HENDRIX, PE, CEA, LEED AP Principal

Byron Hendrix has twenty-six years' experience at HCE, and has successfully completed over 1200 projects since 2004 as a Professional Engineer. Byron has been designing Williamson County projects for the past 26 years as a part of the HCE team. His responsibilities for this project will include design and layout of lighting, power distribution, building power monitoring systems and building/facilities assessments. Additional responsibilities include research and development into new energy efficient design techniques, including cost analysis of systems and products, energy analysis and energy auditing.

EDUCATION

Bachelor of Science
Architectural Engineering
University of Texas at Austin

Master of Science
Mechanical Engineering
University of Texas at Austin

PROFESSIONAL REGISTRATION

Professional Engineer
Texas #94813

LEED AP

Certified Energy Auditor
CEA, 2010

TEMA

RELEVANT EXPERIENCE

- Williamson County Tax Office Remodel
- Williamson County Justice Center
- Williamson County Inner Loop Annex
- Williamson County North Campus Facility
- Williamson County Tax Office
- Williamson County Maintenance Building
- Williamson County Sheriff's Office Training Center
- Williamson County ESD #2
- Williamson County Cedar Park Tax Office
- Williamson County Precinct 1 Annex
- Williamson County Expo Center, Pavilion, RV Park & East Concessions
- Williamson County Child Advocacy Center
- Williamson County EMS Medic
- Williamson County CTTC Renovation
- City of Georgetown Police Facility/Public Safety
- City of Georgetown Fire Station #2
- City of Georgetown Public Safety - Firing Range
- City of Georgetown Art Museum
- City of Georgetown Gary Park
- City of Lampasas City Hall Renovations
- City of Lampasas Wastewater Shop
- City of Pflugerville Fire Station Administration Offices
- City of Pflugerville Field Operations/Public Works
- City of Pflugerville Justice Center Plumbing
- City of Pflugerville Gilleland Pool Equipment Replacement



CRAIG HARRIS

Project Manager

Project management, business development and client/project coordination and controls system commissioning. Commissioning of mechanical systems and controls to insure they are operating according to design intent. Responsible for design of mechanical and plumbing systems for new and renovations projects for educational (K through 12), detention, industrial and commercial buildings. Craig has extensive experience in field investigation of existing systems, which is an asset for HVAC equipment replacement projects. He has been designing Williamson County projects for the past 25 years as a part of the HCE team. Additional experience includes teaching HVAC Service at Austin Community College from 1983-1984.

EDUCATION

Texas State Technical Institute

PROFESSIONAL REGISTRATION

State of Texas HVAC
and Refrigeration -
Class A License

RELEVANT EXPERIENCE

- Williamson County Courthouse Renovation
- Williamson County Annex
- Williamson County Juvenile Justice Center
- Williamson County Jail
- Williamson County Jail (Booking)
- Williamson County Jail (CSI)
- Williamson County North Campus Facility
- Williamson County Cedar Park Tax Office
- Williamson County NCF Sign Shop
- Williamson County Sheriff's Office Training Center
- Williamson County Taylor Health Clinic
- Williamson County Juvenile Jail - HVAC C/O
- City of Round Rock Police Station
- City of Round Rock City Hall
- Travis County ESD #2
- Bastrop County ESD #2
- Fort Bend County Jail
- Denton County Jail
- North Austin Police Substation
- City of Manor City Hall
- Navarro County Courthouse



DATUM
ENGINEERS

LUKE NELSON, PE Structural Principal-in-Charge

Luke joined Datum in 2003 and became a Principal in 2017 in recognition of his outstanding performance and leadership inside and outside the firm. He currently serves as the Managing Principal of Datum's Austin office. Luke manages some of Austin's most important projects for key clients, and his project credits include the new Austin Central Library, multiple corporate office buildings, healthcare projects, and several large parking structures. Clients appreciate his can-do attitude and team success approach.

EDUCATION

Bachelor of Science
Civil Engineering
University of Tennessee

Master of Science Engineering
University of Texas at Austin

REGISTRATION AND AFFILIATIONS

Professional Engineer
Texas #98643

Young Men's Business League

American Inst. of Steel
Construction

Leadership Austin -
Emerge Class 2013

Real Estate Council of Austin

Structural Engineers
Assoc. of Texas

2007 SEAoT Austin
Membership Dir.

RELEVANT EXPERIENCE

- **Williamson County Sheriff's Training Facility, Georgetown, TX**
Structural Project Manager for a 23,400 sq. ft. training center includes classrooms, physical defense training area, locker rooms, weight training room, offices, recruiting office, break room, laundry room, driving simulation room, weapons simulation training room, garage space for specialized police tactical vehicles, armory and ammunition storage.
- **New Central Library, Austin, TX**
Structural Project Manager for 150,000 sq. ft. city hall with 800 foot pedestrian tunnel, 3 levels, 275,000 sq. ft., 750 car underground parking garage.
- **Travis County ESD No. 2, Pflugerville, TX**
Structural Project Engineer for a 2-story classroom building and administration building.
- **Round Rock Fire Station No. 2, Round Rock, TX**
Project Engineer for a 3-bay, 2-story, 7,000 sq. ft. station.
- **Lower Colorado River Authority Dalchau Service Center, Austin, TX**
Structural Project Manager for a new 3-story, 85,000 sq. ft. administration and services center building on the Dalchau campus.
- **TXDOT Stassney Campus, Austin, TX**
Principal-in-Charge for a new campus includes 5-story, 425,344 sq. ft. office, 131,250 sq. ft. warehouse, 84,134 sq. ft. materials lab, radio & signal testing lab, 13,094 sq. ft. central plant, and a 6-level, 539,300 sq. ft parking garage for 1,581 cars.
- **Rosenberg Library Renovation, Galveston, TX**
Structural Project Manager for the restoration of historic 3-story Rosenberg Library, originally built in 1902.



DATUM
ENGINEERS

EDUCATION

Bachelor of Science
Civil Engineering
Georgia Institute of Technology

Master of Science
Structural Engineering
University of Texas

REGISTRATION AND AFFILIATIONS

Professional Engineer
TX #106376

Association for Learning
Environments

PAUL WARFIELD, PE Structural Project Manager

Since joining Datum in 2005, Paul has gained experience working on variety of structural projects, including office, residential, K-12 and higher education work. He has also worked on many complex and multi-phased renovation projects. Paul spent two years (2007-2008) working for the internationally renowned structural firm in their Paris headquarters while he lived abroad. Paul returned to the U.S. and Datum in January 2009, and has since become a licensed PE and Project Manager.

RELEVANT EXPERIENCE

- **City of Austin Public Safety Training Facility, Austin, TX**
Structural Project Engineer for campus improvements include renovations and additions to the apd classroom building, APD gym building/new classroom building, APD storage building, pistol range building, 3 new canopies for the pistol range, exterior classroom buildings, 25,000 sq. ft. rifle/pistol range canopy, a new urban disaster village control building and a new urban disaster village bum building.
- **Travis County New Commissioner's Court, Austin, TX**
Structural Project Engineer for renovation of Lavaca Building for new County Commissioner's Court and Offices.
- **Texas A&M University Commons Building Renovation and Addition, College Station, TX**
Structural Project manager for an extensive renovation to the existing commons building. Includes raised clerestory roof, second floor 60' x 80' opening, grand stair, new entry, new mechanical system, and new kitchen. Phased construction for continuous operation. 2 stories, 84,000 sq. ft. renovation, 8,000 sq. ft. new construction
- **University of Texas Welch Hall West Renovation, Austin, TX**
Structural Project Manager for a comprehensive renovation of the 1978 wing of Welch Hall, encompassing roughly 270,000 sq. ft. New mechanical penthouses were added at the roof to facilitate the complete HVAC and interior renovation for modern chemistry teaching and research. Several sloped auditorium floors were reconfigured, overbuilt, or flattened. Through collaboration, investigation, and analysis, we were able to greatly limit the amount of strengthening needed to accommodate the new loads.



BRANDY WATERS, PE, VMA **President**

Brandy Waters, Sunland Group President, is an experienced Project Manager and Civil Engineer with experience in design, master planning, site coordination, and platting for single family developments, commercial projects and medical facilities throughout Central Texas. Her experience is on projects located within the Cities of San Marcos, Lakeway, Georgetown and Cedar Park, and she has a full understanding of the design and permitting requirements for new construction.

RELEVANT EXPERIENCE

- **Coach America/Kerrville Bus Company; San Antonio Texas**

Responsible for the civil site design, preparation and production of construction documents. Coordinated with the City of San Antonio to acquire both site and building permits. Developed parking layout to optimize circulation patterns and maximize parking. Researched environmental regulation to ensure site compliance. Consolidated and rerouted existing utilities.

- **On-site Structural Inspector, City of Austin Public Works Cesar Chavez 2-Way Conversion; Austin Texas**

Ensured the proper installation of the drilled pier and geo pier foundations. Supervised the construction of the Mechanically Stabilized Earth (MSE) wall with the limestone façade. Worked closely with the City's project manager, the design team, and the general contractor. Maintained a daily log detailing construction activity. Supervised various testing as required by project specifications Rajasthan Area Development

- **SAWS Jeffery St. Reconstruction; San Antonio, Texas**

Assisted with the design of public water and wastewater lines. Developed temporary traffic control plan for the public works project. Performed field checks of project sites or survey areas to verify survey results or features. Assisted with the preparation of the storm water pollution prevention plans. Design phase responsibilities included participating in the preparation of plans, specifications and an estimated cost of construction.

- **City Street Maintenance Water & Sewer Replacement, San Antonio, Texas** Sunland is providing civil engineering services for the design phase and construction phase of waterline and sanitary sewer replacement. The project is the replacement of approx. 750 LF of 6" with new 8" water mains and approx. 615 LF of 12" sewer mains on Jeffrey Street from North Navidad to Sabina Streets.

EDUCATION

Bachelor of Science
Civil Engineering
University of Houston

REGISTRATIONS AND AFFILIATIONS

Professional Engineer
TX #117029
Value Methodology Associate
(VMA) No. 201912029
American Society of Civil
Engineers
Construction Institute
Environmental Water Resources
Institute
Engineers Without Borders - USA
Society of American Military
Engineers
U.S. Green Building Council LEED
Certified A.P.



JOEL BOCK, PE, LI Project Manager

Joel Bock is an experienced Project Manager and civil engineer with experience in design, master planning, site coordination, and platting for medical facilities throughout Central Texas. He has extensive experience on projects located within the City of Austin and Travis County, and has a full understanding of the design and permitting requirements for new construction as well as renovation projects. His experience includes schools, daycares, and administration/office facilities, as well as parks and churches throughout Central Texas.

EDUCATION

Bachelor of Science
Agricultural Engineering
University of Wisconsin-Madison

REGISTRATIONS AND AFFILIATIONS

Professional Engineer: TX 98441
Registered Sanitarian: TX RS4107
Licensed Irrigator: TX LI11652

CONTINUING EDUCATION/TRAINING

Texas Commission on
Environmental Quality (TCEQ),
Texas OSSF Site Evaluator Training

TCEQ, Texas Landscape Irrigator
Training

TCEQ, EPA Phase II Construction
and MS4 Stormwater Permits

RELEVANT EXPERIENCE

■ **Project Manager, Texas Facilities Commission, Site Services Engineering Phase II Capitol Complex, Austin, TX**

Joel is the Project Manager providing professional Site Service Engineer (SSE) pre-design and pre-construction services for the Texas Facilities Commission's Capitol Complex Phase Two Project, for two new state office buildings, associated parking structures, and extension of pedestrian mall ("Capitol Mall") within the Capitol Complex in Austin, Texas.

■ **Senior Planner/Engineering Manager, The Preparatory School Childcare Facility, Bee Cave, TX (2014 – 2017)**

Joel provided Master Planning, final platting, and PDD zoning variance coordination for this 12,900 SF, \$3.5M childcare facility. The school consists of classrooms and play rooms for children ranging in age from infants to pre-school. It also contains spaces for elementary-aged children to participate in after-school activities and provides summer camps. Joel worked with all appropriate local agencies and obtained Lake Travis Fire and Rescue approvals, Edwards Aquifer Contributing Zone design and approvals, West Travis County Public Utility Agency (water/wastewater provider) approvals. He also developed the site plan, bus service drop-off lane and traffic flow plan, and all civil engineering design.

■ **Senior Planner/Engineering Manager, Sunset Canyon Baptist Church Family Life Center Expansion, Dripping Springs, TX (2017 – 2018)**

Joel provided master planning, site plan coordination, and civil engineering design for the school's largest expansion in 15 years. The \$2M expansion included a new building along with the supporting drop-off lanes and parking for meeting spaces, offices, daycare rooms, a gym, and new playscape area.



TRAVIS CROW, PLA Design Principal

With over 14 years in the professional practice of landscape architecture, Travis has gained notoriety for his skill in conceptual design and visioning. This skill has allowed him to be a part of many large-scale landscape architecture and planning projects ranging from master planned communities to downtown master plans.

This experience propelled Travis to become a leader in design and planning for the cities and towns of the Central Texas area. Large or small, these projects positively impact communities and make them a better place to live, work, and play. These positive impacts include: improved connectivity, expanded open space, enhanced arts and culture, improved safety, and bolstered economic impact. With intentions of planning efforts of becoming reality, Travis is aware of the feasibility and constructability of the visions and designs he creates.

With an ability to work efficiently and seamlessly with other disciplines, Travis has been involved in numerous charrettes and visioning workshops.

RELEVANT EXPERIENCE

- 1st Street Redevelopment Temple, TX
- Central/ Adams Corridor Master Plan Temple, TX
- 31st Street Redevelopment Temple, TX
- Corporate Campus Master Plan Temple, TX
- Georgetown City Center Georgetown, TX
- Central Neighborhood District Master Plan Temple, TX
- 35 Gateway Design Temple, TX
- Seaholm Power Plant Renovation* Austin, TX
- Crossroads Park Temple, TX
- Santa Fe Plaza Temple, TX
- Downtown Waxahachie Charrette*Waxahachie, TX
- San Marcos Charrette* San Marcos, TX

**Denotes experience prior to employment at Covey Landscape Architects*

EDUCATION
Bachelor of Landscape
Architecture
Texas Tech University

**REGISTRATIONS
AND AFFILIATIONS**
Professional Landscape Architect
Texas #35007

American Society of Landscape
Architects (ASLA)

Urban Land Institute (ULI)



RONNIE STAFFORD, PLA Managing Principal

Ronnie Stafford has 23 years of landscape architecture experience with a thorough knowledge from concept design to finished construction. He is a versatile landscape architect that has worked on aquatic facilities, high end resorts, university and corporate campuses, and a vast array of public projects. His project management expertise, construction documents, detailing and field experience enables him to fully realize design intentions and ensure the client an efficient process and a well-built project all within the allotted budget. Ronnie provides technical expertise for the design team and communicates the design standards through the construction documentation process for efficiency during construction. His experience working with the public bid and construction process has allowed him to be a strong ally for the municipalities and cities he is an agent for.

EDUCATION

Bachelor of Landscape
Architecture
Texas Tech University

REGISTRATIONS AND AFFILIATIONS

Professional Landscape
Architect
Texas #2460

American Society of
Landscape Architects
(ASLA)

RELEVANT EXPERIENCE

- Crossroads Park Temple, TX
- Santa Fe Plaza Temple, TX
- Rivery Boulevard Expansion Georgetown, TX
- 31st Street Redevelopment
Temple, TX
- Hyatt Regency Lost Pines Resort* Bastrop, TX
- JW Marriott Hill Country Resort*
San Antonio, TX
- Williamson County Roadside Landscape Standards*
Williamson County, Texas
- Ronald Reagan Sustainable Roadside Planting*
Williamson County, Texas
- Performing Arts Center*
Texas State University
- Bobcat Trail Mall Renovation*
Texas State University
- LBJ Wildflower Center Children's Garden* Austin, TX
- Seaholm Power Plant Renovation*
Austin, TX

**Denotes experience prior to employment at Covey Landscape Architects*



IGOR ABADZIC

President/Project Manager



Igor's current responsibilities include daily management of the firm and is lead designer on projects and provides oversight and training of technical support staff, as well as working with other team members on engineering of all projects and managing the work flow, scheduling and technology applications. His designs include multiple technologies for numerous types of security systems.

He is recognized for his broad technical expertise, and ability to implement responsive designs. His knowledge of product and processes play a key role in the design and construction of these systems. His relationship and familiarity with security systems integrators serves to foster better means and methods to implement systems, installation, service and maintenance in order to assure the client of high-quality installation and service.

EDUCATION

Bachelor of Science
Electrical Engineering
**University of Sarajevo,
Sarajevo, Bosnia &
Herzegovina**

REGISTRATIONS AND AFFILIATIONS

CSNA, Part I (Cisco Networks
Certification)

BOSCH Networks Bases
Certification

PELCO Network Bases
Certification

Sensor Security, Outdoor
Perimeter Security Certification

Programmable Logic Controllers
– Certificate of Training

RELEVANT EXPERIENCE

- Benton County Justice Center Security System Retrofit Kennewick, WA
- Bexar County Juvenile Detention Center Expansion and Control Systems Upgrade San Antonio, TX
- Bexar County Juvenile Probation San Antonio, TX
- Brazos County Juvenile Facility Bryan, TX
- Chaves County Juvenile Detention Center Roswell, NM
- Collin County – Juvenile Detention Center Expansion McKinney, TX
- Collin County – Juvenile Detention Center Video System Retrofit McKinney, TX
- Henry Wade Juvenile Justice Center Expansion Dallas, TX
- Jasper County Juvenile Justice Center Security Electronics System Joplin, MO
- Johnson County Juvenile Detention Center Olathe, KS
- Nebraska Youth Correctional Facility, Control Systems Upgrade Omaha, NE
- North Carolina Juvenile Youth Development Center Cabarrus County, NC; Chatham, County, NC; Edgecombe County, NC; Lenoir County, NC
- Oklahoma Office of Juvenile Affairs Next Generation Facility Tecumseh



MICHAEL SMITH, P.E.

C.E.O. / Principal-in-Charge

Michael's responsibilities include all business development and business management as well as engineering supervision of the company's projects. As a Registered Professional Engineer, Michael is experienced in both design and construction engineering.



EDUCATION

Bachelor of Science
Mechanical Engineering
Mississippi State University

REGISTRATIONS AND AFFILIATIONS

NCEES Record Holder
LEED AP

Texas (PE# 87333), Alabama,
Arkansas, Arizona, California,
Colorado, Connecticut,
Delaware, Florida, Georgia,
Idaho, Illinois, Indiana, Iowa,
Kansas, Kentucky, Louisiana,
Maryland, Michigan,
Minnesota, Mississippi,
Missouri, Nebraska, New
Jersey, New Mexico, North
Carolina, Ohio, Oklahoma,
Oregon, South Carolina, South
Dakota, Tennessee, Utah,
Vermont, Virginia, Washington,
Wisconsin, and Wyoming

RELEVANT EXPERIENCE

- Benton County Justice Center Security System Retrofit Kennewick, WA
- Bexar County Juvenile Detention Center Expansion San Antonio, TX
- Brazos County Juvenile Facility Bryan, TX
- Chaves County Juvenile Detention Center Roswell, NM
- Collin County – Juvenile Detention Center Expansion McKinney, TX
- Collin County – Juvenile Detention Center Video System Retrofit McKinney, TX
- Collin County – Adult Detention Center Expansion McKinney, TX
- Jasper County Juvenile Justice Center Security Electronics System Joplin, MO
- Johnson County Olathe Adult Detention Center Expansion Olathe, KS
- Northwestern Regional Adult Detention Center Winchester, VA
- Oklahoma Office of Juvenile Affairs Next Generation Facility Tecumseh, OK
- Prince William County Adult Detention Center Manassas, VA
- Salt Lake County Adult Detention Center Salt Lake City, UT
- Texas Youth Commission – Gainesville State School Gainesville, TX
- Texas Youth Commission – Sheffield State School Sheffield, TX]
- Williamson County Juvenile Justice Center Franklin, TN
- Wyandotte County Juvenile Justice Center Kansas City, KS



TRAINING AND CERTIFICATIONS

BICSI Registered Communications
Distribution Designer (RCDD)
AutoDesk - Computer-Assisted
Drafting
AutoDesk - Revit
Axis – Certified Professional
Genetec - A&E Security Design
Summit
Open Options – Fusion Certified
Video Insight – Security
Technician
Extron - School of Emerging
Technologies
AMX – Schoolview Advanced
Training
AMX – A&E University
S2 – PhySec
Milestone - Advanced
Certification
Pelco – A&E Training
OSP Expo - 2011
MaxCell – Solutions in Flexible
Fabric Innerduct
Tyco – Security Summit

JEFF COOMBS, RCDD

Regional Director

Areas of Expertise

- Technology Systems Project and Program Management
- Premise physical security systems:
- Electronic access control
- Intrusion detection
- Video surveillance systems
- Voice, data, and video cabling infrastructure
- Fiber optic systems
- Data center planning and design

Security Clearances

- DoD – Secret (Inactive)

RELEVANT EXPERIENCE

Jones County - Blubonnet ICE Facility

- Provided design services for a turnkey, design-build project for ICE that included a 10,000 sq ft Administration Building on the following systems: Premise Data Cabling, Electronic Safety & Security, NED Coordination and A/V Multimedia.

Special Warfare Training Group – JBSA Chapman Annex

- Provided design services for the DSN Repair and renovation for the Special Warfare B147 facility including the following systems: Premise Data Cabling, A/V Multimedia, ESS and NED Coordination.

Polk County - ICE Facility

- Provided design services for a turnkey, design-build project for ICE that included a Visitor Center and an auditorium on the following systems: Premise Data Cabling, Electronic Safety & Security, Telephony and A/V Multimedia.

Luke AFB – Veterinary Clinic Renovation

- Providing design services for a design-build project for the 56th Medical Group for a renovation for a vet clinic. Design and coordination includes the following systems: Premise Data Cabling, Electronic Safety & Security and NED Coordination.



EDUCATION

Coursework in education and engineering
Texas A&M University

TRAINING AND CERTIFICATIONS

OSHA 30
Commscope RF Training

JEFF CRABB

Senior Technology Consultant

Jeff Crabb is an IT specialist with over 10 years of experience within both enterprise level and small business environments. Jeff has directed several IT based expansions through planning, evaluation, and implementation of equipment and software solutions in support of business goals. He has extensive experience working with hardware, RF, network, and internet-based technologies and protocols. Jeff created and led the deployment of training programs, preventative maintenance plans, and maintenance programs to ensure maximum uptime and reliability of all business systems. He has experience working with, managing, and motivating people to ensure business end goals are achieved efficiently and with high employee morale.

RELEVANT EXPERIENCE

■ Austin Community College

Created and implemented new Emergency Notification Systems Standards and kicked off a district-wide deployment of the system. This new system involved the integration of both software and hardware solutions to ensure the safety of over 45,000 students and staff members across 15 different locations.

■ Austin Independent School District

New High School AV systems, security, structured cabling, and infrastructure design. True North was also hired to work on several other Austin ISD projects, including the renovation of a new relief school and the renovation of a new elementary school.

■ Round Rock Independent School District

Renovation and expansion of existing high school including special space AV systems, PA/Bell/Clock, structured cabling, security, and infrastructure design. True North has provided consulting services across many construction projects working for over 14 architects in the district.

■ San Marcos Consolidated Independent School District

New Elementary school AV systems, PA/Bell/Clock, security, structured cabling, and infrastructure design. True North has also been hired to work on over six other projects for the district within recent years.



DAN HEMME

Senior Acoustical & Audiovisual Consultant

Dan has been with BAI since 2014, where he works with architects, engineers, and end users on a wide variety of projects as an acoustical, sound isolation and noise control consultant and Audio-Visual designer. Dan is well organized and always ready to learn. He takes pride in his work and strives to produce work that is clear and accurate. Dan brings to his position at BAI experience with multiple software platforms including AutoCAD, Revit, Sketchup, Google Earth, EASE, Bose Modeler and Microsoft Office Suite (including macro programming in Visual Basic). He is adept at ASTM and ANSI field measurement procedures of sound pressure levels, reverberation decay and sound isolation.

EDUCATION

Master of Mechanical
Engineering Graduate Acoustics
Program
University of Texas at Austin

Bachelor of Architectural
Engineering
University of Texas at Austin

Electrical Engineering Studies
University of Texas at Austin

RELEVANT EXPERIENCE

- Brazoria County Courthouse Campus, Angleton, TX
- Williamson County Courthouse, Georgetown, TX
- Williamson County Justice Center Parole Office Remodel, Georgetown, TX
- Travis County Civil and Family Courthouse Bridging Documents, Austin, TX
- U.S. Customs House Tenant Improvements, New Orleans, LA
- Bexar County Justice Center, San Antonio, TX
- City of Colleyville Justice Center Courtroom and Training Room, Colleyville, TX
- Cass County Courthouse Law Enforcement & Justice Center, Linden
- Cass County Law Enforcement and Justice Center, Linden, TX
- Franklin County Courthouse Restoration, Mount Vernon, TX
- Gray County Courthouse Historic Courtroom Restoration, Pampa, TX
- Bryan Justice Center (part of four-block municipal campus), Bryan, TX
- City of Mesquite City Hall, Mesquite, TX
- City of Mesquite Police Facility, Mesquite, TX
- City of Grand Prairie Public Facility (Fire/Police/Detention/Adm.), Grand Prairie, TX
- North McAllen Police Community Training Center, McAllen, TX
- City of Austin City Hall Council Chambers, Austin, TX
- City of Keller Police Expansion/Communications Center, Keller, TX
- Hays County Government Complex, San Marcos, TX
- City of Paris Police and Court Facility, Paris, TX
- Dallas Area Rapid Transit (DART) Monroe Shops Police Facility, Dallas
- City of Round Rock Police Facility, Round Rock, TX
- City of Temple Police Facility, Temple, TX
- City of Copperas Cove Police Facility, Copperas Cove, TX



NICKIE RAMM, P.E.

Associate Principal Engineer, Vice President

Extensive construction experience and specializing in building enclosures in residential and commercial buildings. Over ten years of experience that include building enclosure condition assessments utilizing both destructive and nondestructive testing, frequently including field performance testing of windows, cladding systems, waterproofing, and roofing. Specializing in a full range of consulting services, from investigative field surveys, developing building envelope repair designs and specifications, design peer reviews, construction administration of roofing and waterproofing projects, and performing water infiltration testing. Proficient in conducting investigation, analysis, and design of repairs to address both structural and architectural problems and providing construction monitoring services for remedial repair work



EDUCATION

Master of Science in Architectural Engineering
University of Texas at Austin

Bachelor of Science
Architectural Engineering
University of Texas at Austin

Electrical Engineering Studies
University of Texas at Austin

REGISTRATIONS AND AFFILIATIONS

State of Texas Registered
Professional Engineer – No.
114497

American Institute of Architects
– Building Enclosure Committee
(AIA-BEC), Austin Chapter

Structural Engineers Association
of Texas – Board Member 2011-
2014

RELEVANT EXPERIENCE

- Waterfront Phases I and II – Oracle Austin Headquarters, Building Envelope Design and Construction Phase Consulting
- Museum Tower – Dallas, TX – Condition Assessment and Transition Study
- 640 Taylor Office Tower – Fort Worth, TX, Building Envelope Design and Construction Phase Consulting
- Austin Public Library, Austin, TX, Building Envelope Design and Construction Phase Consulting
- Seaholm Development, Austin, TX – Building Envelope Consulting
- The Whitley – Austin, TX – Building Envelope Design and Construction Phase Consulting
- AMLI Mueller Phase II – Austin, TX – Building Envelope Design and Construction Phase Consulting
- Lamar Flats – Austin, TX – Building Envelope Design and Construction Phase Consulting
- West Park Phase I and II – Austin, TX – Building Envelope Design and Construction Phase Consulting
- AMLI Addison – Addison, TX – Building Envelope Design and Construction Phase Consulting
- The Ritz Carlton Residences – Dallas, TX – Building Envelope Assessment, Design/Construction Phase Consulting



ALONSO CARO, JR., RRC,RRO,CDT Associate Principal Engineer, Vice President



EDUCATION

Certificate in Construction Management

Austin Community College
(Honors)

Certificate in Carpentry,
Austin Community College
(Honors)

REGISTRATIONS AND AFFILIATIONS

RCI Registered Roof Consultant,
No. 0764,

RCI Registered
Roof Observer, No. 1311,

CSI Construction Documents
Technologist,

ACI Adhesive Anchor Installer, No.
01221019, American Concrete
Institute

HAGG Certified Inspector
Commercial Roofs, HCI No.
201807206, Haag Engineering Co.

Alonso has extensive construction experience and specializing in building enclosures in residential and commercial buildings. Over fifteen years of experience that include numerous building enclosure condition assessments utilizing both destructive and nondestructive testing, frequently including field performance testing of windows, cladding systems, waterproofing, and roofing. Specializing in a full range of consulting services, from investigative field surveys, developing roof designs and specifications, peer review, construction administration of roofing and waterproofing projects, and performing water infiltration testing and infrared thermography surveys.

RELEVANT EXPERIENCE

University of Texas at Austin:

- Main Building – Roofing and Waterproofing Assessment, Repair Design and Construction Phase Consulting
- F. Loren Winship Drama Building – Water Infiltration Assessment
- LBJ Presidential Library and Museum – Plaza Waterproofing Construction Phase Consulting
- Carothers & Littlefield Dormitory – Roof Assessment and Roof Replacement Design
- Robert B. Rowling Hall – Building Enclosure Commissioning (BECx) and Construction Phase Consulting
- Nuclear Engineering Teaching Lab – Roof Assessment, Repair Design and Construction Phase Consulting.

University of Texas at San Antonio:

- Main Building – Roofing and Waterproofing Assessment
- Biosciences Building – Roofing Assessment and Roof Replacement Design

Texas A&M University, College Station, TX:

- Evans Library – Roofing and Waterproofing Assessment, Repair Design and Construction Phase Consulting

Austin Independent School District, Austin, TX:

- Murchison Middle School – Roof Assessment, Repair Design and Construction Phase Consulting
- Lively Middle School - Roof Assessment, Repair Design and Construction Phase Consulting