

WILLIAMSON COUNTY EMERGENCY COMMUNICATIONS CONSOLE MODERNIZATION PROPOSAL

DECEMBER 14TH, 2022



 russbassett

December 14th, 2022

Mike Moody
Technology Division Manager
Williamson County Emergency Communications
911 Tracy Chambers Lane
Georgetown, TX 78626

Williamson County Emergency Communications Console Modernization – Finalized Proposal

Mike,

Thank you for the opportunity to serve Williamson County! It was my pleasure hosting you at the Hays County ECC in San Marcos back in March and having the opportunity to visit WCEC. We are pleased to present this order ready proposal to refresh your 9-1-1 operations floor, replacing current end of life furniture, establishing a modern aesthetic, creating a no-fail work environment for the current PSAP technology platforms, enhancing the ergonomic interface for your Team and growing from (22) to (28) console positions.

Russ Bassett is an industry leading designer and manufacturer of the highest quality consoles for mission critical environments. We are a financially stable company that has consistently delivered positive results for our clients for now 62 years. Russ Bassett has a state of the art 110,000 square foot manufacturing facility and showroom in Whittier, CA. We have proven expertise and experience in the layout, design, manufacture, shipment, delivery, installation and service of mission critical console systems. Based on our successful similar work for other Public Safety Communications Agencies, Transportation Network Operations Control Centers, Power Utilities and Military/Government Agencies you can trust us to do a great job for WCEC.

Our goal is that every Russ Bassett client has an excellent experience working with us from project inception through successful project installation, and in the long run as we provide ongoing service and support. We strive to not only meet your expectations but exceed them. We will bring drive, integrity, attention to detail, and excellent service to your Team during every stage of the project. We will work in concert with County Staff, your Electrician and Low Voltage Communications Contractor, CAPCOG, Motorola, and any other project stakeholders to deliver a best-in-class solution on-time and on-budget. We are team players!

In the following pages, you will find a narrative review of our project approach, an updated cost estimate for the console package, design drawings, a description of the proposed console furniture product solution, supporting product information, relevant reference letters and warranty information.

Project Pricing

The pricing is based on the drawing package herein and includes all associated design, project management, console materials, freight services and installation services. We have also provided the line-item detail quotation document that supports the budget further into this package.

The Installation Services pricing assumes that we would be complete the project over the course of two (2) separate phases while you stay live, with all work occurring during regular business hours and using standard (non-union, not prevailing wage) labor rates. The removal and disposal of your current end of life workstations is also included.

WCEC PSAP Operations Floor Consoles - Summary Cost Proposal

Qty.	Item	Unit Price	Extended Price
28	Call Taker, Dispatcher & Supervisor Consoles including: - Flex 6'6" x 6'6" x 3'D 90° Corner Sit-Stand Console, 22.6" to 48.7" height range, heavy duty lifting columns, anti-collision technology - Single continuous worksurface, comfort front edge, surface height controls at Dashboard and worksurface edge - Continuous 42"H x 7" Technology Wall surround with removable vented interior/exterior lower access panels and rear access panels, fabric clad soundboard upper cladding behind sit-stand, upper Slatwall section with integrated wire management troughs at all fixed height extensions and bridges - Slatwall Monitor Array to support the monitor configurations shown in drawings, Array includes integrated power distribution and cable management - Recessed dashboard for simple, intuitive interaction with all console controls, includes Trough for cable management with power distribution feeding all desktop level equipment and providing a concealed location for data (e.g. USB) connections - Secondary ADA/Wellness Desk Height Controller at worksurface edge with Bluetooth - Includes (8) USB Keystone Couplers with 15' Extension Cables per position to couple mice and keyboards with enclosed computers - Includes accessories for KM Switch and Speaker Bar attachment to the monitor array - All technology is fully integrated and enclosed as shown in design drawings (under sit-stand enclosures, walls, fixed bridge cabinets and/or square back corners, with MCC7500E Micro & AIM attached to Universal Equipment Mount in-wall) - Each position includes fixed height extensions and shared bridges as shown in the drawing package - Finished end panels (Laminate design)	\$ 14,653	\$ 410,289
28	R56 Bonding Kit - full Motorola Compliance - 4x12 Bus Bar (SBB) at Each Position with Isolation Bumpers, 2-Hole/Lug Type and enough connection points for console frame, receptacle boxes (quad outlet J-Boxes by Electrician), equipment connections, and surge protectors (SPDs). - Bonding Jumpers Frame to Frame, Frame to Sit-Stand, Sit-Stand to Monitor Array, #10 Jacketed/Insulated Cable (lengths not exceeding 10') - (6) Metal Housing SPDs with switch cover, double lug external bonding lugs - Bonding Jumpers SPDs to SBB, #10 Jacketed/Insulated Cable (lengths not exceeding 10')	\$ 850	\$ 23,800
28	Personal Comfort System including: - Dual-output forced air heater beneath worksurface with directional adjustment - Desktop cooling fans with directional diffusers - Intuitive back lit controls at the dashboard - Occupancy sensor for time out after 15 minutes of inactivity	\$ 1,435	\$ 40,179
28	Situational Awareness Light - Top cap mounted fixture w/ up to (5) Lenses (Colors specifiable) - Includes specialized top cap, 36"H pole mount, power supply, wiring harness kit for simple interconnect to Phone and/or Radio equipment, manual 'Help Light' switch at Dashboard and printable insert sign holder	\$ 942	\$ 26,365
28	Ambient Lighting - Blue light, under and over counter, dimmer at dashboard	\$ 508	\$ 14,214
56	Dimmable LED Task Lights - (2) Articulating Light mounted to Monitor Array	\$ 304	\$ 17,002
28	Dimmable LED Task Lights - (1) Gooseneck Light at dashboard	\$ 196	\$ 5,482
28	Personal Device Convenience Outlets - (1) USB-C & (1) USB-A power-only outlets located at dashboard	\$ 157	\$ 4,389

Material Subtotal	\$ 541,719
Removal & Disposal of Existing	\$ 11,000
Freight Services	\$ 26,500
Installation Services (2-Phase)	\$ 120,500
PSAP Operations Floor Consoles Project Budget	\$ 699,719

This pricing excludes any applicable sales tax, source electrical and communications cabling, raised access flooring work including floor coring, bonding or grounding beyond what is outlined in the Motorola R-56 Full Compliance package, new monitors, monitor mounting, monitor cables, cable labeling and cable routing, breakroom, and all seating (chairs) shown on drawings for reference only.

Procurement

Russ Bassett Consoles are available to Williamson County via HGACBuy Contract EC07-20 for 9-1-1 Equipment & Services and have been pricing accordingly. According to the HGACBuy website, there is already an IGA in place, and you are a Member/User of this pre-competitively bid cooperative purchasing vehicle.

Russ Bassett Console Salient Characteristics

Our consoles are designed with the comfort, safety and productivity of the Telecommunicators as the primary focus. The proposed console design also effectively integrates technology creating a 'no-fail' work environment and allowing technicians to quickly access and trouble shoot equipment when necessary.

Russ Bassett has proposed a solution built upon our Flex Console system. The Flex Console product platform – as installed at the Hays County ECC which we will view together next week – is highly reliable, extraordinarily durable and ergonomically designed. The proposed configuration uses standard modular Flex components to create a custom solution specific for the requirements of the WCEC.

Here are a few key features that differentiate Russ Bassett Consoles from other options you may be considering...

- **Individually Adjustable Monitor Arms or Slatwall Monitor Arrays**
When it comes to monitor mounts, we strive to be the most flexible provider available. Russ Bassett consoles can utilize individually adjustable monitor arms that are fully articulating and designed to universally accommodate differing monitor sizes and weights. Individually adjustable monitor arms allow each user to adjust monitors to their focal depth and angle preferences so that they can be super comfortable as they work. We also offer a Slatwall Monitor Array that moves all monitors together as one with electric height and manual focal depth user adjustments. The array is a curved two-sided slatwall design and incorporates adjustable mounts that provide for peripheral and tilt angles to be preset, both optimizing the ergonomic interface and properly aligning all monitor seams. In either case robust power distribution and cable management features are integrated. *We have proposed the Slatwall Monitor Array solution for Williamson County. Note that during a visit to Bastrop County 911, you would see fully articulating monitor arms mounted to a fixed slatwall.*
- **Large, Uninterrupted Worksurface**
Russ Bassett consoles are designed to allow a full single-lift surface to achieve the BIFMA ergonomic standards for input device platforms, meaning a separate keyboard surface is not required. Your writing surface, work area, telephones and other peripheral devices are all at the same comfortable height as your keyboards. Height adjustment range is from 22.6" to 48.7" from the floor to the top of the work surface, which exceeds the HFES 100-2007, ANSI/BIMFA G1-2002 and all European standards for input device platforms.
- **Durable - Comfort Front Edge**
Russ Bassett work surfaces utilize an ultra-durable, waterfall shaped front edge that provides a comfortable, liquid tight edge. There is no exposed hardware on our consoles making them aesthetically appealing, comfortable and extremely tough.
- **Safety – Anti-Collision Technology**
Russ Bassett Flex consoles utilize redundant lifting system sensors and in-house fabricated anti-collision switch covering the area of the user where the surface could lower onto a chair or operator. If the surface is lowered onto an object (such as a chair) the anti-collision technology is activated and the worksurface rises slightly avoiding any contact.
- **Cable Management**
We obsess over orderly cable management! You cannot put your foot up and disconnect a mouse, keyboard or anything else! All PCs and peripheral equipment, monitor video and power cables, source electrical and communications cabling, etc. all occur within the console! Russ Bassett consoles include a large cable trough around the back edge of the worksurface. Power strips are mounted inside the trough for easy access. The trough is accessed by flipper doors rather than brush grommets or rubber flaps. The flipper doors have gaps above and below so that equipment cables from the slatwall or monitor mounting system can drop over the door and cables from the worksurface can route under the door, and the door can still open. The door is easily removed with spring pins, allowing full access to the trough during setup and reconfiguring.

From the monitor arms and desktop, into the slatwall wire management trough, down the cable chains, into the structural wall and out into the PC enclosure spaces we properly manage all audio, video, power and network cables to keep all mission critical systems easily accessible and the console easily retrofittable.

- **Welded Steel Framework**

Russ Bassett consoles are welded steel rather than bolted extrusions and/or wood panels, offering superior rigidity (particularly beneficial for reconfiguring) and superior heat dispersion. While we do offer exhaust fan kits for technology storage areas, they are almost never required because the welded steel consoles are very well ventilated and disperse heat rather than insulating it. With Russ Bassett you can achieve the required heat dispersion without exhaust fans, and this reduces electricity consumption, vibration, noise and future maintenance issues. The integrated 42" high structural/technology wall surround has a 7" profile and provides a rigid physical structure to the system, multiple cable management raceways, serve as the zone for accommodating and fully enclosing electrical J-box and network cabling demarcations, allows for computer and peripheral equipment placement, vertical rack mounting, and serves as the connection between the sit-stand cable management infrastructure and the fixed height extension cabinets, including accommodating all cable routing and coiling of excess computer cabling service loops. When supporting fixed height extensions and bridges, the walls include an upper slatwall section with flipper door access panels opening into the integrated wire management troughs. The walls have interior and exterior, lower and upper access panels as well as removable top caps that are also of perforated steel construction. Top caps can be specialized for integration of status indicator lights and large screen display mounts. This is an extraordinarily well thought out and durable solution! It is designed, engineered and manufactured as console furniture from the ground up and does not incorporate office furniture like elements.

- **Accessories**

In addition to those shown in the pricing graph above, Treadmill and Exercise Bikes integrated with the consoles, Monitor Mount attachable accessories for reference books, worksurface depressions covered in Plexiglas for key document visibility, integrating agency logos into back panels and many other options are available. We look forward to discussing them further with your Team.

Product videos can be viewed at this link <https://russbassett.com/control-room-resources/video/>.

We are proud to be **"Made in the USA"**. Russ Bassett Consoles are made at our factory in Whittier, California. We are vigilant in ensuring that our manufacturing processes and products are environmentally sound and will have favorable impact in our customer's facilities. All Russ Bassett products are Greenguard Gold Certified for Indoor Air Quality. Finishes can be viewed on our website here <https://russbassett.com/control-room-resources/finishes/> and physical samples have been provided to you.

Project Management and Schedule

We are focused on successfully managing projects so that all parties involved have a great experience in working with us. As stated, Russ Bassett will work closely with the Project Team to ensure a seamless process and successful result. We take customer project timelines very seriously and will ensure that insofar as it depends on our Team, your project is completed on time and on budget.

Manufacturing lead times for the products proposed here are currently in the sixteen (16) week range after receipt of order, plus shipping and installation time, to the first phase. Orders can be placed as far in advance as makes sense for the project. If selected as your partner for the project, we will collaborate with the Team to define the desired start date, define all necessary action items and create and maintain a Gantt Chart Schedule to keep the Team apprised of any extra project time, critical timelines and key action items.

Delivery and Installation Services

Russ Bassett Project Managers and Factory Trained Local Installers deliver the highest caliber on-site delivery and installation experience.

We coordinate up front, show up on time, install our console furniture with the highest safety and quality standards, and act as a team player to assist our clients in successfully implementing their projects.

Key delivery and installation services include:

- Project Planning Guide
- Specialized packaging and transportation carriers

- Onsite Project Manager
- Russ Bassett Certified Local (Austin, DFW or San Antonio Area) Installers
- Onsite Training of GC Subs and Equipment Vendors
- Onsite Training of User Groups
- Installation Survey

All Russ Bassett Installation Services will be coordinated from our corporate headquarters in Whittier, CA. Your Russ Bassett Project Manager will assign and lead our local Team of certified technicians to successfully complete the project.

All Russ Bassett project installations include onsite training for the electrical and communications cabling subcontractors while we're in the process of installation, as well as training for the technology integration Team and user group. A User Guide will be provided and reviewed with you at the completion of your installation.

Warranty, Repair and Maintenance

Russ Bassett consoles are built for 24/7 mission critical environments. Russ Bassett is your single point of contact for all questions regarding operation, warranty and service items. Russ Bassett consoles do not require any kind of regularly scheduled service or preventative maintenance.

If your console requires service in the future, we will reply to all inquiries within 24 – 48 hours or less. If service is required, it will take place within 48 -72 hours. We stock all critical items and can ship them next day for immediate installation. Non-critical items that need to be replaced will ship in two (2) weeks or less. Local certified Russ Bassett local technicians are available for quick response items and to troubleshoot issues on site.

Russ Bassett offers one of the strongest warranties in the industry, covering both parts, shipping and for a period of ten (10) years. A complete copy of our 10-Year Everything Warranty is included as an attachment. We stand behind our product and are committed to maintaining long term positive relationships with our customers!

References

Included here are also a select set of referral letters for your review. Our goal would be to obtain a similar letter from Williamson County after the successful completion of your relocation project! More letters can be viewed on our website and a formal reference list is available upon request.

Conclusion

If selected as your partner for the project Mike, we will deliver both a best-in-class console furniture solution and customer experience. Please don't hesitate to contact me with any questions or concerns as you review. My cell phone is (602) 380-6322 and email is mgawin@russbassett.com.

Thank you again!



Matt Gawin

Quotation

PROJECT #:	PN-10050-01	Option: 1
REVISION:	B	
PROJECT NAME:	Williamson County Emergency Communications	

rus sbassett
 Russ Bassett Corporation
 8189 Byron Road Whittier, CA 90606
 Tel: 800.350.2445 Fax: 562.698.8972
 www.russbassett.com

QUOTE DATE:	12/14/2022	SALES EXECUTIVE: Matt Gawin
EXPIRATION DATE:	12/30/2022	ADDRESS: 8189 Byron Rd Whittier, CA 90606
CUSTOMER:	Williamson County Emergency Communications	PHONE: (602) 380-6322
CONTACT:	Michael Moody	EMAIL: mgawin@rus sbassett.com
ADDRESS:	911 Tracy Chambers Lane Georgetown, TX 78626	
PHONE:	512-864-8234	
EMAIL:	michael.moody@wilco.org	

QTY	PART NUMBER	DESCRIPTION	HGACBuy PRICE	EXTENDED
AREA: 1		PHASE 1	AREA 1 TOTAL: \$	309,786.95
16	FSA-CS-78-R56	Flex Sit-Stand, R56, 90° Corner, 78W, Adjustable Array	\$ 5,870.70	\$ 93,931.20
10	FCF-42-T-SSF-R56	Flex Sit-Stand Corner Filler, 42H, Tech Storage, Fabric, R56	\$ 850.30	\$ 8,503.00
15	FSW-07-3042-EMT-EMT	Flex Wall, 07D, 30L x 42H, Empty Side A, Empty Side B	\$ 267.85	\$ 4,017.75
1	FSW-07-3042-EMT-SWN	Flex Wall, 07D, 30L x 42H, Empty Side A, Slatwall Side B	\$ 432.85	\$ 432.85
2	FSW-07-3630-EMT-EMT	Flex Wall, 07D, 36L x 30H, Empty Side A, Empty Side B	\$ 256.85	\$ 513.70
3	FSW-07-3642-EMT-SWN	Flex Wall, 07D, 36L x 42H, Empty Side A, Slatwall Side B	\$ 446.05	\$ 1,338.15
1	FSW-07-3642-SWN-SWN	Flex Wall, 07D, 36L x 42H, Slatwall Side A, Slatwall Side B	\$ 611.05	\$ 611.05
1	FSW-07-4242-EMT-SWN	Flex Wall, 07D, 42L x 42H, Empty Side A, Slatwall Side B	\$ 459.25	\$ 459.25
1	FSW-07-4242-EMT-SWN	Flex Wall, 07D, 42L x 42H, Empty Side A, Slatwall Side B	\$ 459.25	\$ 459.25
22	FSW-07-4842-EMT-SSF	Flex Wall, 07D, 48L x 42H, Empty Side A, Sit-Stand Fabric Side B	\$ 492.25	\$ 10,829.50
4	FSW-07-4842-SSF-SSF	Flex Wall, 07D, 48L x 42H, Sit-Stand Fabric Side A, Sit-Stand Fabric Side B	\$ 677.05	\$ 2,708.20
2	FSW-07-4842-SWN-SSF	Flex Wall, 07D, 48L x 42H, Slatwall Side A, Sit-Stand Fabric Side B	\$ 657.25	\$ 1,314.50
6	FSW-07-CC42-EMT-SSF	Flex Wall, 07D, 42.3L x 42H, Empty Side A, Sit-Stand Fabric Side B	\$ 479.05	\$ 2,874.30
16	FTC-0706-SL-S	Flex Top Cap, 7D x 6W, Status Indicator Light Pole Receiver, Square	\$ 198.55	\$ 3,176.80
11	FTC-0730-S-S	Flex Top Cap, 7D x 30W, Solid, Square	\$ 139.15	\$ 1,530.65
6	FTC-0736-S-S	Flex Top Cap, 7D x 36W, Solid, Square	\$ 145.75	\$ 874.50
16	FTC-0742-S-S	Flex Top Cap, 7D x 42W, Solid, Square	\$ 152.90	\$ 2,446.40
6	FTC-0748-S-S	Flex Top Cap, 7D x 48W, Solid, Square	\$ 159.50	\$ 957.00
5	FTC-0778-S-S	Flex Top Cap, 7D x 78W, Solid, Square	\$ 192.50	\$ 962.50
1	FTC-0784-S-S	Flex Top Cap, 7D x 84W, Solid, Square	\$ 199.10	\$ 199.10
6	FTC-07CC-S-S	Flex Top Cap, 7D x 42.3W, Solid, Square	\$ 152.90	\$ 917.40
1	FWS-FRE-3078-W	Work Surface, Rectangle, 30D x 78L	\$ 683.65	\$ 683.65
1	FWS-FRE-3084-W	Work Surface, Rectangle, 30D x 84L	\$ 722.70	\$ 722.70
8	FWS-FRE-3636-W	Work Surface, Rectangle, 36D x 36L	\$ 548.35	\$ 4,386.80
2	FWS-FRE-3642-W	Work Surface, Rectangle, 36D x 42L	\$ 593.45	\$ 1,186.90
16	FWS-SCA-3678-N-W	Work Surface, 90° Corner Sit-Stand, Single Lift Array, 36D x 78L	\$ 1,032.90	\$ 16,526.40
11	FBP-3042-SPS	Flex Back Panel, 30W x 42H, Solid, Powder, Square	\$ 221.10	\$ 2,432.10
3	FBP-3642-SPS	Flex Back Panel, 36W x 42H, Solid, Powder, Square	\$ 227.70	\$ 683.10
2	FBP-4242-SPS	Flex Back Panel, 42W x 42H, Solid, Powder, Square	\$ 234.30	\$ 468.60
22	FBP-4842-SPS	Flex Back Panel, 48W x 42H, Solid, Powder, Square	\$ 240.90	\$ 5,299.80
6	FBP-CC42-SPS	Flex Back Panel, 42.3W x 42H, Solid, Powder, Square	\$ 234.30	\$ 1,405.80
12	FCC-07L-4542-EPs	Flex Corner Connector, 7D, 45° L-Type, 42H, Exterior, Powder, Square	\$ 271.15	\$ 3,253.80

Quotation

PROJECT #:	PN-10050-01	Option: 1
REVISION:	B	
PROJECT NAME:	Williamson County Emergency Communications	

russebassett
 Russ Bassett Corporation
 8189 Byron Road Whittier, CA 90606
 Tel: 800.350.2445 Fax: 562.698.8972
 www.russebassett.com

QTY	PART NUMBER	DESCRIPTION	HGACBuy PRICE	EXTENDED
2	FCC-07L-9042-EPs	Flex Corner Connector, 7D, 90° L-Type, 42H, Exterior, Powder, Square	\$ 304.15	\$ 608.30
4	FCC-07T-9042-EPs	Flex Corner Connector, 7D, 90° T-Type, 42H, Exterior, Powder, Square	\$ 303.60	\$ 1,214.40
6	FEC-AAN-0742-L-L	Flex Left End Cap, Array Sit-Stand, 7" Wall, 42"H, Lam	\$ 413.05	\$ 2,478.30
6	FEC-AAN-0742-R-L	Flex Right End Cap, Array Sit-Stand, 7" Wall, 42"H, Lam	\$ 413.05	\$ 2,478.30
4	FEC-FH-0712-L	Flex Single Tier End Cap, 7" Wall, 12"H, Laminate	\$ 99.55	\$ 398.20
1	FPC-3024-LD-L-N	Flex Closed Storage Pedestal, 30D x 24W, Left Swing, Laminate Faces, No Lk	\$ 340.45	\$ 340.45
1	FPC-3024-RD-L-N	Flex Closed Storage Pedestal, 30D x 24W, Right Swing, Laminate Faces, No L	\$ 340.45	\$ 340.45
1	FPD-3030-FF-L-L	Flex Drawer Pedestal, 30D x 30W, File/File, Laminate Faces, Lock	\$ 512.60	\$ 512.60
1	FPD-3036-FF-L-L	Flex Drawer Pedestal, 30D x 36W, File/File, Laminate Faces, Lock	\$ 555.50	\$ 555.50
8	FPP-3618-BCL-L-N	Flex Drawer Pedestal, 36D x 18W, Box/Closed, Left Swing, Lam Faces, No Lk	\$ 399.30	\$ 3,194.40
8	FPP-3618-BCR-L-N	Flex Drawer Pedestal, 36D x 18W, Box/Closed, Right Swing, Lam Faces, No Lk	\$ 399.30	\$ 3,194.40
1	FPT-241828-LD-L-N-F	Flex Technology Pedestal, 24D x 18W x 28H, Left Swing, No Lock, Fixed Shelf	\$ 379.50	\$ 379.50
1	FPT-241828-RD-L-N-F	Flex Technology Pedestal, 24D x 18W x 28H, Right Swing, No Lock, Fixed Shel	\$ 379.50	\$ 379.50
1	FPT-242428-LD-L-N-F	Flex Technology Pedestal, 24D x 24W x 28H, Left Swing, No Lock, Fixed Shelf	\$ 399.30	\$ 399.30
1	FPT-242428-RD-L-N-F	Flex Technology Pedestal, 24D x 24W x 28H, Right Swing, No Lock, Fixed Shel	\$ 399.30	\$ 399.30
1	FPT-302428-LD-L-N-F	Flex Technology Pedestal, 30D x 24W x 28H, Left Swing, No Lock, Fixed Shelf	\$ 419.65	\$ 419.65
1	FPT-302428-RD-L-N-F	Flex Technology Pedestal, 30D x 24W x 28H, Right Swing, No Lock, Fixed Shel	\$ 419.65	\$ 419.65
16	DAC-AMB-PWR	Ambient Light Power Supply W/ Splitter	\$ 53.35	\$ 853.60
16	DAC-AMB-SW-12	Ambient Light, Slatwall, 12", Blue	\$ 99.55	\$ 1,592.80
16	DAC-AMB-SW-72	Ambient Light, Slatwall, 72", Blue	\$ 264.00	\$ 4,224.00
128	DAC-CO-USB	USB-A 3.0 Keystone - Coupler (Includes 15' Extension)	\$ 40.15	\$ 5,139.20
16	DAC-DASH-CHRG-AC	Dash Plate, Device Charging, USB A-C	\$ 156.75	\$ 2,508.00
16	DAC-DASH-DIMMER	Dash Plate, Ambient Dimmer	\$ 90.75	\$ 1,452.00
16	DAC-DASH-LIGHT	Dash Plate, Gooseneck Light	\$ 195.80	\$ 3,132.80
16	DAC-DASH-SWITCH-R	Dash Plate, Switch, Status Indicator Light, Red	\$ 99.55	\$ 1,592.80
32	DAC-DASH-USB-X1	Dash Plate, 1 USB Keystone W/ Cable	\$ 72.60	\$ 2,323.20
16	DAC-DASH-BLANK	Dash Plate, Blank	\$ 30.25	\$ 484.00
16	DAC-DTC-ADA-DD	Desktop Controller, ADA, Digital Display	\$ 132.00	\$ 2,112.00
32	DAC-LED-DA-SW	Dimmable LED Task Light - Double Arm, Slatwall Mount	\$ 303.60	\$ 9,715.20
1	DAC-MA-01-SW-S	Fully Articulating Monitor Arm - Weight Range 5-16 lbs	\$ 297.00	\$ 297.00
8	DAC-MM-01-SW-PM	Monitor Mount, Slatwall, Pole Mount	\$ 346.50	\$ 2,772.00
40	DAC-MM-11-SW-PM	Monitor Mount, 1-Over-1, Slatwall, Pole Mount	\$ 561.00	\$ 22,440.00
16	DAC-PCS-FLX-A	Flex Personal Comfort System, Heat & Air, Array Console	\$ 1,434.95	\$ 22,959.20
6	DAC-PSTRIP-06-15A-R56	SPD, Power Strip, Surface Mount, 6 Outlet, 15A, R56	\$ 198.55	\$ 1,191.30
16	DAC-SL-CIS	Status Indicator Light - Custom Interchangeable Sign	\$ 116.05	\$ 1,856.80
3	DAC-DCM-010-BL	Data Color Markers, 10 Pack, Blue	\$ 7.15	\$ 21.45
3	DAC-DCM-010-RD	Data Color Markers, 10 Pack, Red	\$ 7.15	\$ 21.45
47	DAC-SW-CBLTIE-10	Slatwall Clip w/ Hook and Loop, 10 Pack	\$ 23.65	\$ 1,111.55
16	DAC-SW-MICROPC	Slatwall Micro PC Mount	\$ 132.00	\$ 2,112.00
3	WAC-CO-6D	Convenience Outlet Plate, 6 Data Ports	\$ 83.05	\$ 249.15
1	WAC-CO-BLANK	Convenience Outlet Plate, Blank Filler Plate	\$ 59.95	\$ 59.95

Quotation

PROJECT #:	PN-10050-01	Option: 1
REVISION:	B	
PROJECT NAME:	Williamson County Emergency Communications	

russebassett
 Russ Bassett Corporation
 8189 Byron Road Whittier, CA 90606
 Tel: 800.350.2445 Fax: 562.698.8972
 www.russebassett.com

QTY	PART NUMBER	DESCRIPTION	HGACBuy PRICE	EXTENDED
16	WAC-DTB-14	14 Port Data Termination Bracket, Universal	\$ 79.75	\$ 1,276.00
6	WAC-PSTRIP-H-15-R56	SPD, Power Strip, Horizontal Wall Mounting Bracket, 6 Outlet, R56	\$ 218.35	\$ 1,310.10
38	WAC-PSTRIP-V-15-R56	SPD, Power Strip, Vertical Wall Mounting Bracket, 6 Outlet, R56	\$ 218.35	\$ 8,297.30
16	WAC-SL-CNCT-KT	Status Indicator Light Connection Kit with Power Supply	\$ 165.55	\$ 2,648.80
16	WAC-SLT-5-36	Pole Mount Situation Awareness Light, 5-Lens, 36"H Pole	\$ 560.45	\$ 8,967.20
2	WAC-TPFS-3024	Tech Pedestal Cabinet Fixed Shelf, 30"D x 24"W	\$ 106.15	\$ 212.30
2	WAC-TPFS-3024	Tech Pedestal Cabinet Fixed Shelf, 30"D x 24"W	\$ 106.15	\$ 212.30
28	WAC-TRAY-0418	4" PC Tray for 7" Wall, 18" Long	\$ 53.35	\$ 1,493.80
16	WAC-UEM-12	Universal Equipment Mount Kit, 12"	\$ 83.05	\$ 1,328.80

AREA: 2			PHASE 2		AREA 2 TOTAL: \$		231,932.80
12	FSA-CS-78-R56	Flex Sit-Stand, R56, 90° Corner, 78W, Adjustable Array	\$ 5,870.70	\$	70,448.40		
6	FSW-07-3642-EMT-SWN	Flex Wall, 07D, 36L x 42H, Empty Side A, Slatwall Side B	\$ 446.05	\$	2,676.30		
1	FSW-07-4242-EMT-SWN	Flex Wall, 07D, 42L x 42H, Empty Side A, Slatwall Side B	\$ 459.25	\$	459.25		
1	FSW-07-4242-EMT-SWN	Flex Wall, 07D, 42L x 42H, Empty Side A, Slatwall Side B	\$ 459.25	\$	459.25		
24	FSW-07-4842-EMT-SSF	Flex Wall, 07D, 48L x 42H, Empty Side A, Sit-Stand Fabric Side B	\$ 492.25	\$	11,814.00		
12	FSW-07-CC42-EMT-SSF	Flex Wall, 07D, 42.3L x 42H, Empty Side A, Sit-Stand Fabric Side B	\$ 479.05	\$	5,748.60		
12	FTC-0706-SL-S	Flex Top Cap, 7D x 6W, Status Indicator Light Pole Receiver, Square	\$ 198.55	\$	2,382.60		
6	FTC-0736-S-S	Flex Top Cap, 7D x 36W, Solid, Square	\$ 145.75	\$	874.50		
14	FTC-0742-S-S	Flex Top Cap, 7D x 42W, Solid, Square	\$ 152.90	\$	2,140.60		
12	FTC-0748-S-S	Flex Top Cap, 7D x 48W, Solid, Square	\$ 159.50	\$	1,914.00		
12	FTC-07CC-S-S	Flex Top Cap, 7D x 42.3W, Solid, Square	\$ 152.90	\$	1,834.80		
6	FWS-FRE-3636-W	Work Surface, Rectangle, 36D x 36L	\$ 548.35	\$	3,290.10		
2	FWS-FRE-3642-W	Work Surface, Rectangle, 36D x 42L	\$ 593.45	\$	1,186.90		
12	FWS-SCA-3678-N-W	Work Surface, 90° Corner Sit-Stand, Single Lift Array, 36D x 78L	\$ 1,032.90	\$	12,394.80		
6	FBP-3642-SPS	Flex Back Panel, 36W x 42H, Solid, Powder, Square	\$ 227.70	\$	1,366.20		
2	FBP-4242-SPS	Flex Back Panel, 42W x 42H, Solid, Powder, Square	\$ 234.30	\$	468.60		
24	FBP-4842-SPS	Flex Back Panel, 48W x 42H, Solid, Powder, Square	\$ 240.90	\$	5,781.60		
12	FBP-CC42-SPS	Flex Back Panel, 42.3W x 42H, Solid, Powder, Square	\$ 234.30	\$	2,811.60		
24	FCC-07L-4542-EPS	Flex Corner Connector, 7D, 45° L-Type, 42H, Exterior, Powder, Square	\$ 271.15	\$	6,507.60		
4	FEC-AAN-0742-L-L	Flex Left End Cap, Array Sit-Stand, 7" Wall, 42"H, Lam	\$ 413.05	\$	1,652.20		
4	FEC-AAN-0742-R-L	Flex Right End Cap, Array Sit-Stand, 7" Wall, 42"H, Lam	\$ 413.05	\$	1,652.20		
6	FPP-3618-BCL-L-N	Flex Drawer Pedestal, 36D x 18W, Box/Closed, Left Swing, Lam Faces, No Lk	\$ 399.30	\$	2,395.80		
6	FPP-3618-BCR-L-N	Flex Drawer Pedestal, 36D x 18W, Box/Closed, Right Swing, Lam Faces, No Lk	\$ 399.30	\$	2,395.80		
1	FPT-241828-LD-L-N-F	Flex Technology Pedestal, 24D x 18W x 28H, Left Swing, No Lock, Fixed Shelf	\$ 379.50	\$	379.50		
1	FPT-241828-RD-L-N-F	Flex Technology Pedestal, 24D x 18W x 28H, Right Swing, No Lock, Fixed Shel	\$ 379.50	\$	379.50		
1	FPT-242428-LD-L-N-F	Flex Technology Pedestal, 24D x 24W x 28H, Left Swing, No Lock, Fixed Shelf	\$ 399.30	\$	399.30		
1	FPT-242428-RD-L-N-F	Flex Technology Pedestal, 24D x 24W x 28H, Right Swing, No Lock, Fixed Shel	\$ 399.30	\$	399.30		
12	DAC-AMB-PWR	Ambient Light Power Supply W/ Splitter	\$ 53.35	\$	640.20		
12	DAC-AMB-SW-12	Ambient Light, Slatwall, 12", Blue	\$ 99.55	\$	1,194.60		
12	DAC-AMB-SW-72	Ambient Light, Slatwall, 72", Blue	\$ 264.00	\$	3,168.00		
96	DAC-CO-USB	USB-A 3.0 Keystone - Coupler (Includes 15' Extension)	\$ 40.15	\$	3,854.40		
12	DAC-DASH-CHRG-AC	Dash Plate, Device Charging, USB A-C	\$ 156.75	\$	1,881.00		

Quotation

PROJECT #:	PN-10050-01	Option: 1
REVISION:	B	
PROJECT NAME:	Williamson County Emergency Communications	


Russ Bassett Corporation
8189 Byron Road Whittier, CA 90606
Tel: 800.350.2445 Fax: 562.698.8972
www.russbassett.com

QTY	PART NUMBER	DESCRIPTION	HGACBuy PRICE	EXTENDED
12	DAC-DASH-DIMMER	Dash Plate, Ambient Dimmer	\$ 90.75	\$ 1,089.00
12	DAC-DASH-LIGHT	Dash Plate, Gooseneck Light	\$ 195.80	\$ 2,349.60
12	DAC-DASH-SWITCH-R	Dash Plate, Switch, Status Indicator Light, Red	\$ 99.55	\$ 1,194.60
24	DAC-DASH-USB-X1	Dash Plate, 1 USB Keystone W/ Cable	\$ 72.60	\$ 1,742.40
12	DAC-DASH-BLANK	Dash Plate, Blank	\$ 30.25	\$ 363.00
2	DAC-DCM-010-BL	Data Color Markers, 10 Pack, Blue	\$ 7.15	\$ 14.30
2	DAC-DCM-010-RD	Data Color Markers, 10 Pack, Red	\$ 7.15	\$ 14.30
12	DAC-DTC-ADA-DD	Desktop Controller, ADA, Digital Display	\$ 132.00	\$ 1,584.00
24	DAC-LED-DA-SW	Dimmable LED Task Light - Double Arm, Slatwall Mount	\$ 303.60	\$ 7,286.40
8	DAC-MM-01-SW-PM	Monitor Mount, Slatwall, Pole Mount	\$ 346.50	\$ 2,772.00
28	DAC-MM-11-SW-PM	Monitor Mount, 1-Over-1, Slatwall, Pole Mount	\$ 561.00	\$ 15,708.00
12	DAC-PCS-FLX-A	Flex Personal Comfort System, Heat & Air, Array Console	\$ 1,434.95	\$ 17,219.40
4	DAC-PSTRIP-06-15A-R56	SPD, Power Strip, Surface Mount, 6 Outlet, 15A, R56	\$ 198.55	\$ 794.20
12	DAC-SL-CIS	Status Indicator Light - Custom Interchangeable Sign	\$ 116.05	\$ 1,392.60
32	DAC-SW-CBLTIE-10	Slatwall Clip w/ Hook and Loop, 10 Pack	\$ 23.65	\$ 756.80
12	DAC-SW-MICROPC	Slatwall Micro PC Mount	\$ 132.00	\$ 1,584.00
12	WAC-DTB-14	14 Port Data Termination Bracket, Universal	\$ 79.75	\$ 957.00
6	WAC-PSTRIP-H-15-R56	SPD, Power Strip, Horizontal Wall Mounting Bracket, 6 Outlet, R56	\$ 218.35	\$ 1,310.10
36	WAC-PSTRIP-V-15-R56	SPD, Power Strip, Vertical Wall Mounting Bracket, 6 Outlet, R56	\$ 218.35	\$ 7,860.60
12	WAC-SL-CNCT-KT	Status Indicator Light Connection Kit with Power Supply	\$ 165.55	\$ 1,986.60
12	WAC-SLT-5-36	Pole Mount Situation Awareness Light, 5-Lens, 36" Pole	\$ 560.45	\$ 6,725.40
24	WAC-TRAY-0418	4" PC Tray for 7" Wall, 18" Long	\$ 53.35	\$ 1,280.40
12	WAC-UEM-12	Universal Equipment Mount Kit, 12"	\$ 83.05	\$ 996.60

Quotation

PROJECT #: PN-10050-01

Option: 1

REVISION: B

PROJECT NAME: Williamson County Emergency Communications



Russ Bassett Corporation

8189 Byron Road Whittier, CA 90606

Tel: 800.350.2445 Fax: 562.698.8972

www.russbassett.com

[illegible]

HGACBuy Contract #: EC07-20 (911 Equipment & Emergency Notification Software and Services).

Prices shown herein are Net (discount applied) unless otherwise noted. Effective Dates 7/1/2020 - 6/30/23.

Product Total: \$ 541,719.75

Price does not include applicable sales tax

Delivery Services: \$ 26,495.25

Russ Bassett Installation Services - 2 Phase:	\$	120,500.00
---	----	------------

Teardown and Removal of Existing Consoles:	\$	11,000.00
--	----	-----------

Total Due \$ 699,719.00

Quotation

PROJECT #:	PN-10050-01	Option: 1
REVISION:	B	
PROJECT NAME:	Williamson County Emergency Communications	


Russ Bassett Corporation
8189 Byron Road Whittier, CA 90606
Tel: 800.350.2445 Fax: 562.698.8972
www.russbassett.com

Drawings

Any drawing submitted to the Client under this Quotation must be signed-off as "approved for manufacture" and returned with applicable purchase order.
Drawing REVISION level must match Quote REVISION level.

Delivery & Installation

A signed, completed delivery and installation checklist and purchase order is required to prevent any issues at time of delivery and installation.
Any unique requirements encountered at time of delivery and installation not covered on the installation checklist will be invoiced at cost in addition to the charges quoted herein.

Russ Bassett ships your products using our "Safe Ship" program. The program simply states that we guarantee your products will arrive damage free anywhere in the 48 contiguous United States. If damage should occur, notify customer service and Russ Bassett will rush a replacement part or unit and pick up the damaged product.

RBC shall coordinate with BUYER's Designated Contact to establish a firm shipment and delivery schedule to meet BUYER's installation requirements.

Purchase Order

Send to: Russ Bassett Corporation
Attn: Customer Service
8189 Byron Road
Whittier, CA 90606

Fax to: (562) 698-8972

Purchase orders must include the following information to process with Russ Bassett:
Sold to, Ship to, Order Date, Requested Delivery/Install Date, PO Number, Quantity, Full Model Numbers & Total.

All purchase orders must also accompany the following documents to be considered a complete order:
Signed drawing noting console and work surface colors and/or cabinet color, signed quotation, & installation checklist.

Quote is Valid for 90 days from date of issue; and, may only be extended in writing by Russ Bassett.

Payment Terms

Williamson County Negotiated Terms:

- Milestone 1 - Phase 1 Payment due for Material and associated Freight upon delivery to WCEC, less 10% holdback
- Milestone 2 - Phase 1 Payment due for Installation Services Upon Substantial Completion, less 10% holdback
- Milestone 3 - Phase 2 Payment due for Material and associated Freight upon delivery to WCEC, less 10% holdback
- Milestone 4 - Phase 2 Payment due for Installation Services Upon Substantial Completion, less 10% holdback
- Milestone 5 - 10% holdback payment due 30 days from final punchlist completion

Lead-time

For the products covered under this proposal is fourteen (14) to sixteen (16) weeks AAO (After Acceptance of Order).
Incomplete Purchase Orders may delay the ship date; actual date will be confirmed on written Order Acknowledgment.

Quotation

PROJECT #:	PN-10050-01	Option: 1
REVISION:	B	
PROJECT NAME:	Williamson County Emergency Communications	


Russ Bassett Corporation
8189 Byron Road Whittier, CA 90606
Tel: 800.350.2445 Fax: 562.698.8972
www.russbassett.com

Warranty

Russ Bassett warrants, to the original Buyer, that all products will be free from defects in material and workmanship for 10 full years. In mission critical, 24/7/365 environments, quickly resolving a product issue is of top priority for both the Buyer and Russ Bassett. Prompt execution of this warranty requires cooperation. With guidance from Russ Bassett, Buyer agrees to perform basic troubleshooting tasks to determine the nature of the defect and to self-correct before on-site assistance can be provided. For simple replacements, the part will be quickly shipped directly to Buyer. If the problem requires on-site assistance, Russ Bassett will come out during normal work hours to resolve the issue. If the defect is found to have resulted from circumstances outside of the warranty coverage, and/or Buyer imposes conditions or restrictions that increases the service cost, Buyer agrees to reimburse Russ Bassett for any resulting additional expense. Buyer also agrees to properly dispose of the old parts and packing material. The few circumstances where this warranty against defects would not apply include normal wear and tear, damage, misuse, modifications, consumable items or product shipped outside the U.S. Repairs, substitute products or replacements, of equal or higher value, used to resolve a warranty claim will in no way extend the applicable warranty period applied to the original product. Product repair or replacement is Buyer's exclusive remedy for all product defects covered under this non-transferable warranty. Russ Bassett makes no other express or implied warranties to any product except as stated above and makes no warranty of Russ Bassett product fitness except for use as standard console furniture.

Change Order & Cancellation Policy

Any REQUEST for changes to the design, scope of work or schedule shall be made in writing. RBC will notify BUYER, If it is possible to accommodate the requested change and, if so, what costs and schedule impacts would apply. No change will be made without sign-off of the updated quote and drawing by BUYER and prepayment of additional costs. Once a confirmed order is within 4 WEEKS of the scheduled ship date, it is NOT AVAILABLE FOR CHANGES.

Buyer's Delay

If BUYER is unable to take delivery per the agreed upon schedule, RBC will, as a courtesy, warehouse the product at no charge for up to 30 days. After 45 days, 100% of the Product Total will be invoiced, less any prior progress payments already received. At that time STORAGE FEES OF 1% PER MONTH, of the product total will apply and be billed monthly. Freight and Installation fees will be billed at time of shipment and due upon substantial completion of the installation. A 10% retainage may be held back to cover resolution of any outstanding punch list items.

Acceptance Signature

Authorized Signature

Print Name of Authorized Signature

Print Title

Print Company Name

P.O. Number

Date of Authorization

CUSTOMER

CUSTOMER:
**WILLIAMSON COUNTY
EMERGENCY COMM**
PROJECT ADDRESS:
911 TRACY CHAMBERS LANE
GEORGETOWN, TX 78626

PROJECT

PROJECT NAME:
PSAP CONSOLE MODERNIZATION

PROJECT INITIATION DATE:
03/14/2022
CONSOLE TYPE: FLEX
NUMBER OF POSITIONS:
28

SCALE:
NTS

SALES EXECUTIVE
MATT GAWIN

DESIGNER
JESSE GREEN

SHEET INDEX

NO.	SHEET NAME
1	3D VIEW 1
2	3D VIEW 2
3	PLAN VIEW
4	ELEVATION A
5	ELEVATION B
6	ELEVATION C
7	EQUIPMENT FIT
8	
9	
10	
11	
12	
13	
14	
15	

REVISIONS

REV	DATE	DESCRIPTION	BY
A	03/14/22	FULL DRAWING PACKAGE	JG
B	03/28/22	REVISE ROOM & CONSOLE SIZE	JG
1	11/09/22	UPDATED SS. REMOVED TECH PEDS.	TC
1B	11/21/22	UPDATED WALLS ON BACK TO BACK	TC

SHEET DESCRIPTION
3D VIEW 1

DRAWING #	OPTION	REV.	SHEET
PN-10050-01	1	B	1 / 7

CUSTOMER

CUSTOMER:
**WILLIAMSON COUNTY
EMERGENCY COMM**
PROJECT ADDRESS:
911 TRACY CHAMBERS LANE
GEORGETOWN, TX 78626

PROJECT

PROJECT NAME:
PSAP CONSOLE MODERNIZATION

PROJECT INITIATION DATE:
03/14/2022
CONSOLE TYPE: FLEX
NUMBER OF POSITIONS:
28

SCALE:
NTS

SALES EXECUTIVE
MATT GAWIN

DESIGNER
JESSE GREEN

SHEET INDEX

NO.	SHEET NAME
1	3D VIEW 1
2	3D VIEW 2
3	PLAN VIEW
4	ELEVATION A
5	ELEVATION B
6	ELEVATION C
7	EQUIPMENT FIT
8	
9	
10	
11	
12	
13	
14	
15	

REVISIONS

REV	DATE	DESCRIPTION	BY
A	03/14/22	FULL DRAWING PACKAGE	JG
B	03/28/22	REVISE ROOM & CONSOLE SIZE	JG
1	11/09/22	UPDATED SS. REMOVED TECH PEDS.	TC
1B	11/21/22	UPDATED WALLS ON BACK TO BACK	TC

SHEET DESCRIPTION
3D VIEW 2

DRAWING #	OPTION	REV.	SHEET
PN-10050-01	1	B	2 / 7

CUSTOMER

CUSTOMER:
**WILLIAMSON COUNTY
EMERGENCY COMM**
PROJECT ADDRESS:
911 TRACY CHAMBERS LANE
GEORGETOWN, TX 78626

PROJECT

PROJECT NAME:
PSAP CONSOLE MODERNIZATION

PROJECT INITIATION DATE:
03/14/2022
CONSOLE TYPE: FLEX NUMBER OF POSITIONS:
28

SCALE:
1/4" = 1' - 0"

SALES EXECUTIVE
MATT GAWIN

DESIGNER
JESSE GREEN

SHEET INDEX

NO.	SHEET NAME
1	3D VIEW 1
2	3D VIEW 2
3	PLAN VIEW
4	ELEVATION A
5	ELEVATION B
6	ELEVATION C
7	EQUIPMENT FIT
8	
9	
10	
11	
12	
13	
14	
15	

REVISIONS

REV	DATE	DESCRIPTION	BY
A	03/14/22	FULL DRAWING PACKAGE	JG
B	03/28/22	REVISE ROOM & CONSOLE SIZE	JG
1	11/09/22	UPDATED SS. REMOVED TECH PEDS.	TC
1B	11/21/22	UPDATED WALLS ON BACK TO BACK	TC

SHEET DESCRIPTION
PLAN VIEW

DRAWING #	OPTION	REV.	SHEET
PN-10050-01	1	B	3 7

CUSTOMER

CUSTOMER:
**WILLIAMSON COUNTY
EMERGENCY COMM**
PROJECT ADDRESS:
911 TRACY CHAMBERS LANE
GEORGETOWN, TX 78626

PROJECT

PROJECT NAME:
PSAP CONSOLE MODERNIZATION

PROJECT INITIATION DATE:
03/14/2022
CONSOLE TYPE: FLEX NUMBER OF POSITIONS: 28

SCALE:
1" = 1' - 0"

SALES EXECUTIVE
MATT GAWIN

DESIGNER
JESSE GREEN

SHEET INDEX

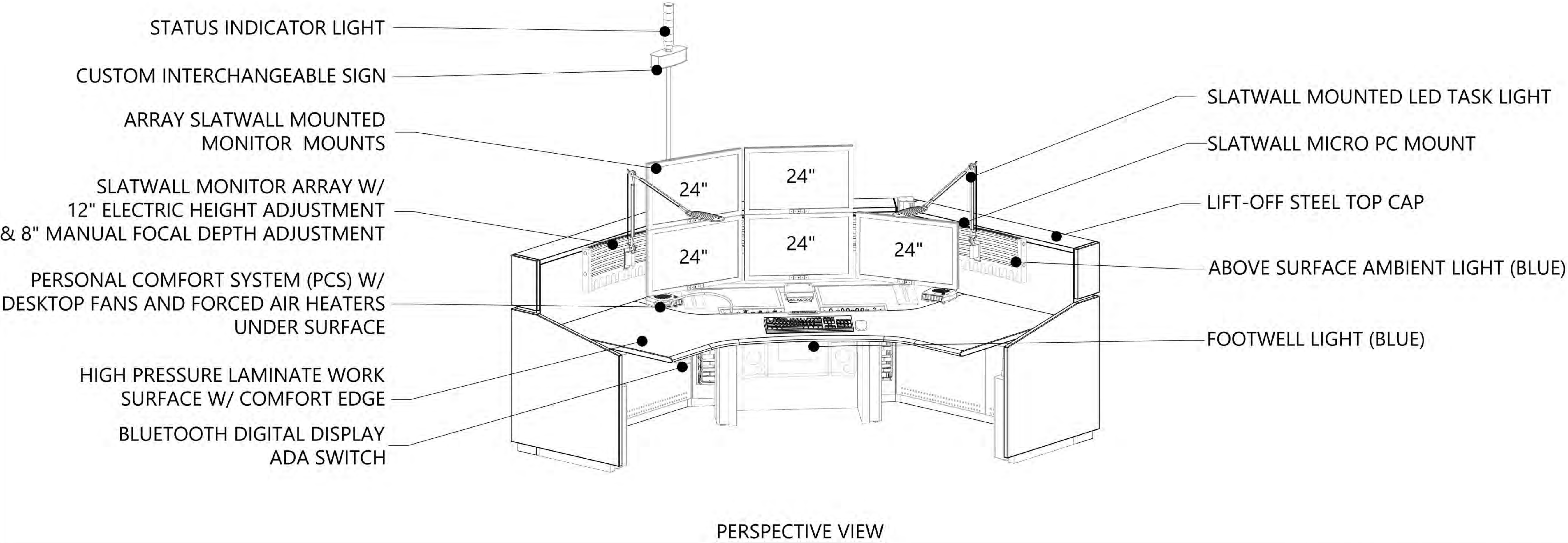
NO.	SHEET NAME
1	3D VIEW 1
2	3D VIEW 2
3	PLAN VIEW
4	ELEVATION A
5	ELEVATION B
6	ELEVATION C
7	EQUIPMENT FIT
8	
9	
10	
11	
12	
13	
14	
15	

REVISIONS

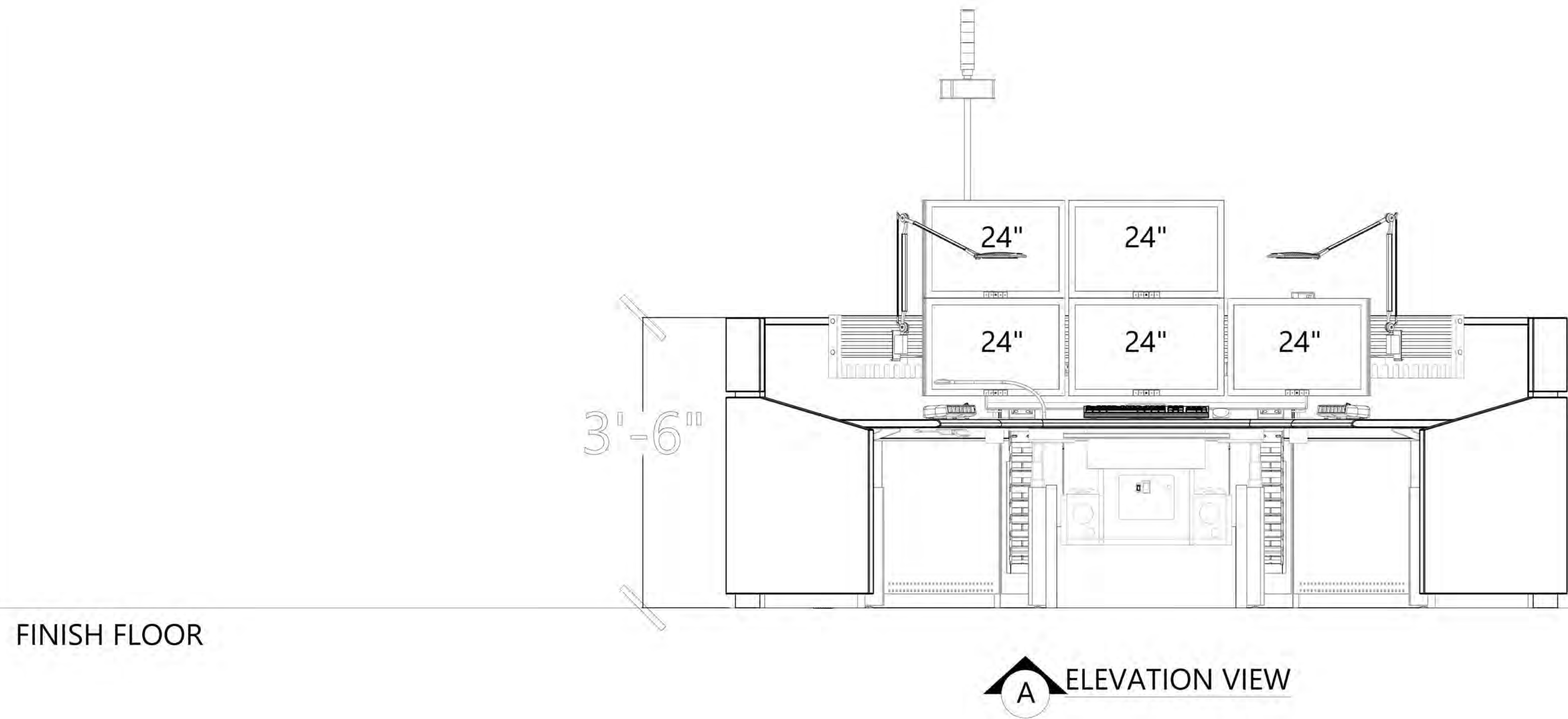
REV	DATE	DESCRIPTION	BY
A	03/14/22	FULL DRAWING PACKAGE	JG
B	03/28/22	REVISE ROOM & CONSOLE SIZE	JG
1	11/09/22	UPDATED SS. REMOVED TECH PEDS.	TC
1B	11/21/22	UPDATED WALLS ON BACK TO BACK	TC

SHEET DESCRIPTION
ELEVATION A

DRAWING #	OPTION	REV.	SHEET
PN-10050-01	1	B	4 / 7



- CONSOLE DASHBOARD WITH:
- 2 - USB POWER OUTLETS
 - GOOSENECK TASK LIGHT W/ DIMMER
 - STATUS INDICATOR SWITCH
 - CONSOLE CONTROLS
 - PCS CONTROLS
 - AMBIENT LIGHT DIMMER



FINISH FLOOR

CUSTOMER

CUSTOMER:
**WILLIAMSON COUNTY
EMERGENCY COMM**
PROJECT ADDRESS:
911 TRACY CHAMBERS LANE
GEORGETOWN, TX 78626

PROJECT

PROJECT NAME:
PSAP CONSOLE MODERNIZATION

PROJECT INITIATION DATE:
03/14/2022
CONSOLE TYPE: FLEX NUMBER OF POSITIONS: 28

SCALE:
1" = 1' - 0"

SALES EXECUTIVE
MATT GAWIN

DESIGNER
JESSE GREEN

SHEET INDEX

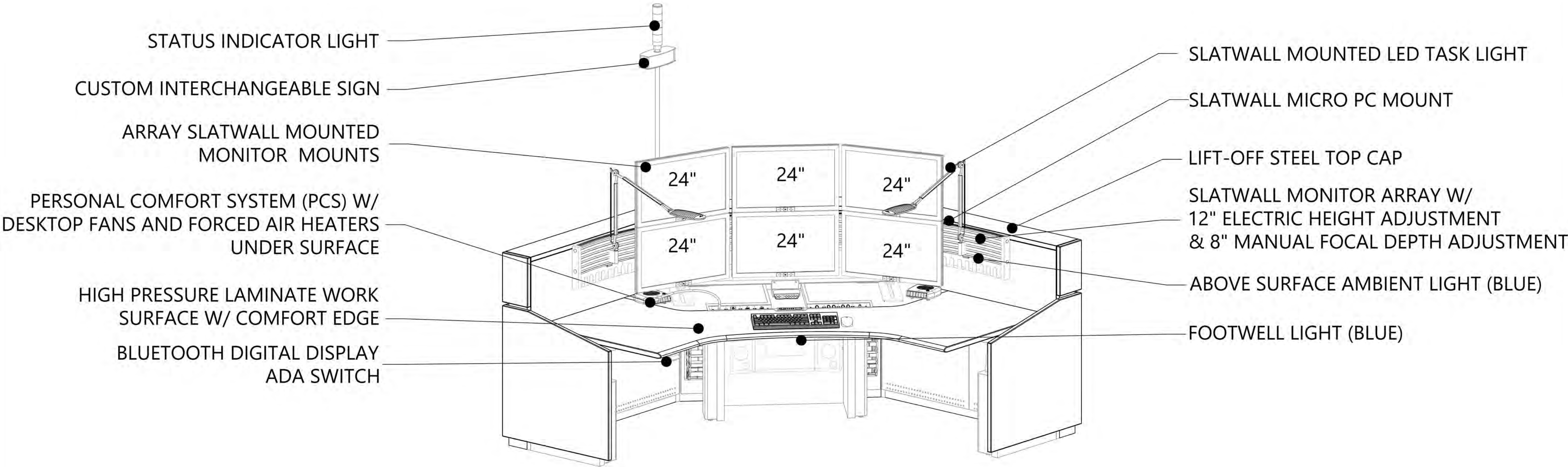
NO.	SHEET NAME
1	3D VIEW 1
2	3D VIEW 2
3	PLAN VIEW
4	ELEVATION A
5	ELEVATION B
6	ELEVATION C
7	EQUIPMENT FIT
8	
9	
10	
11	
12	
13	
14	
15	

REVISIONS

REV	DATE	DESCRIPTION	BY
A	03/14/22	FULL DRAWING PACKAGE	JG
B	03/28/22	REVISE ROOM & CONSOLE SIZE	JG
1	11/09/22	UPDATED SS. REMOVED TECH PEDS.	TC
1B	11/21/22	UPDATED WALLS ON BACK TO BACK	TC

SHEET DESCRIPTION
ELEVATION B

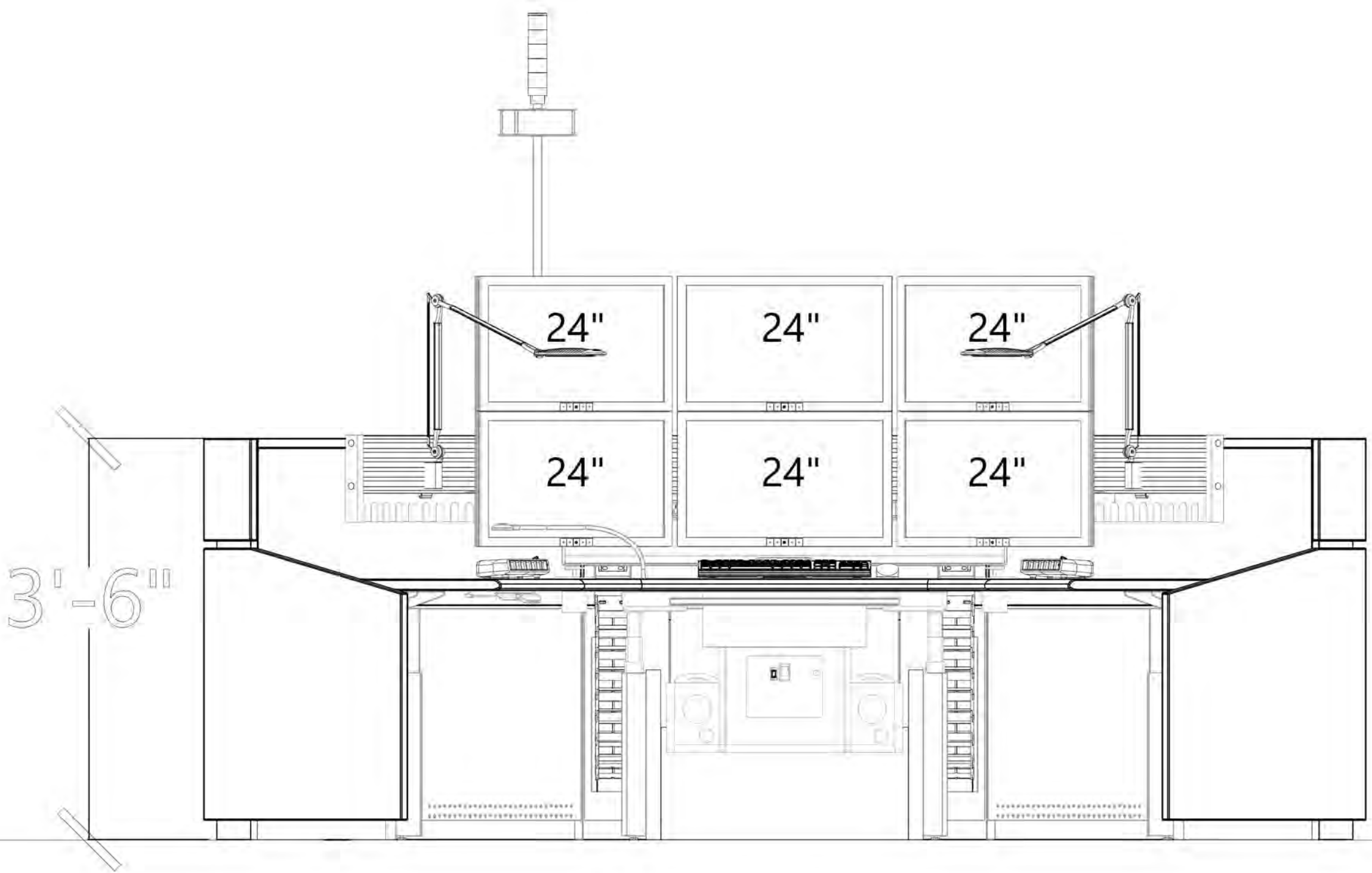
DRAWING #	OPTION	REV.	SHEET
PN-10050-01	1	B	5 / 7



PERSPECTIVE VIEW

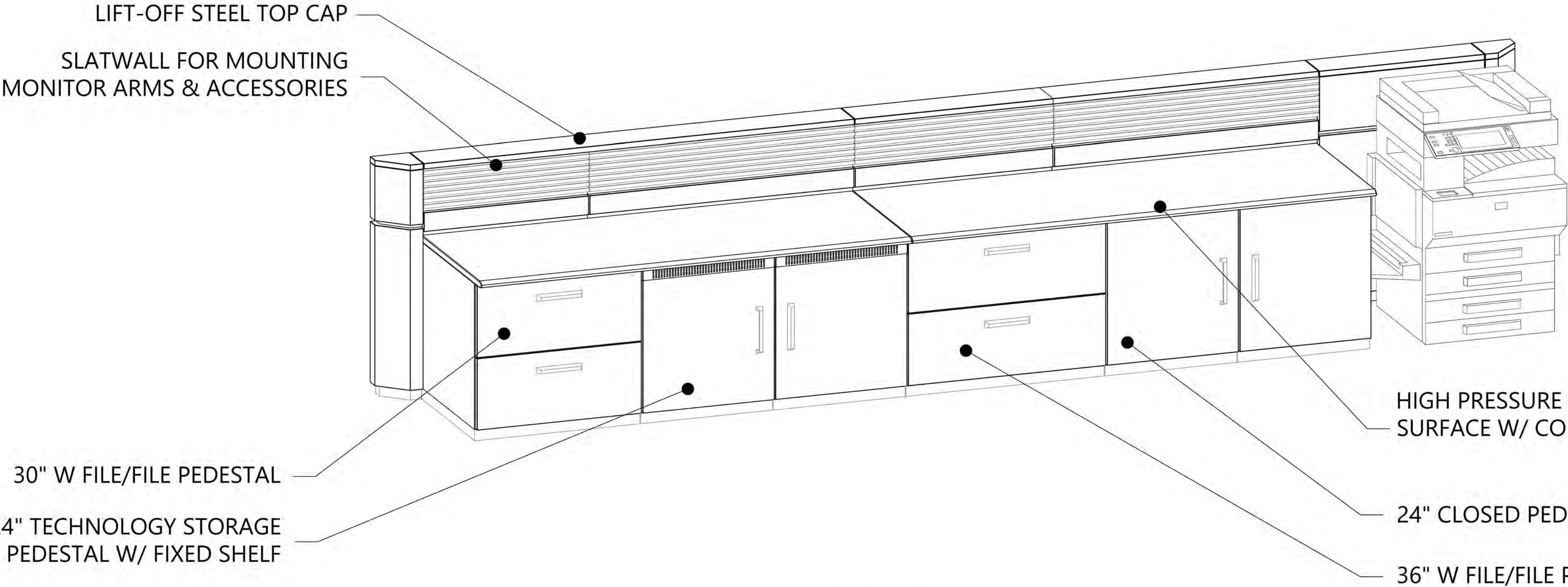
CONSOLE DASHBOARD WITH:

- 2 - USB POWER OUTLETS
- GOOSENECK TASK LIGHT W/ DIMMER
- STATUS INDICATOR SWITCH
- CONSOLE CONTROLS
- PCS CONTROLS
- AMBIENT LIGHT DIMMER

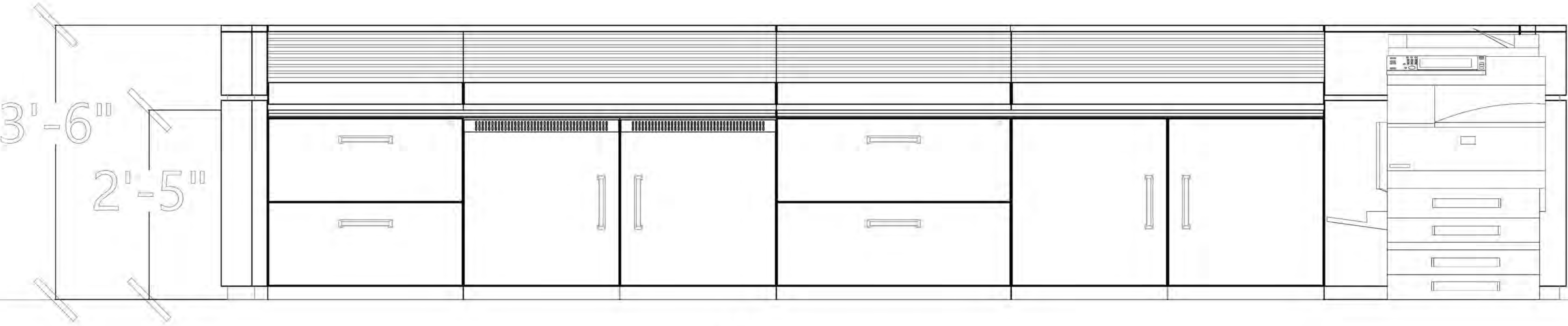


B ELEVATION VIEW

FINISH FLOOR



PERSPECTIVE VIEW



ELEVATION VIEW

CUSTOMER

CUSTOMER:
**WILLIAMSON COUNTY
EMERGENCY COMM**
PROJECT ADDRESS:
911 TRACY CHAMBERS LANE
GEORGETOWN, TX 78626

PROJECT

PROJECT NAME:
PSAP CONSOLE MODERNIZATION

PROJECT INITIATION DATE:
03/14/2022
CONSOLE TYPE: FLEX NUMBER OF POSITIONS:
28

SCALE:
1" = 1' - 0"

SALES EXECUTIVE
MATT GAWIN

DESIGNER
JESSE GREEN

SHEET INDEX

NO.	SHEET NAME
1	3D VIEW 1
2	3D VIEW 2
3	PLAN VIEW
4	ELEVATION A
5	ELEVATION B
6	ELEVATION C
7	EQUIPMENT FIT
8	
9	
10	
11	
12	
13	
14	
15	

REVISIONS

REV	DATE	DESCRIPTION	BY
A	03/14/22	FULL DRAWING PACKAGE	JG
B	03/28/22	REVISE ROOM & CONSOLE SIZE	JG
1	11/09/22	UPDATED SS. REMOVED TECH PEDS.	TC
1B	11/21/22	UPDATED WALLS ON BACK TO BACK	TC

SHEET DESCRIPTION
ELEVATION C

DRAWING #	OPTION	REV.	SHEET
PN-10050-01	1	B	6/7

CUSTOMER

CUSTOMER:
**WILLIAMSON COUNTY
EMERGENCY COMM**
PROJECT ADDRESS:
911 TRACY CHAMBERS LANE
GEORGETOWN, TX 78626

PROJECT

PROJECT NAME:
PSAP CONSOLE MODERNIZATION

PROJECT INITIATION DATE:
03/14/2022
CONSOLE TYPE: FLEX NUMBER OF POSITIONS:
28

SCALE:
1" = 1' - 0"

SALES EXECUTIVE
MATT GAWIN

DESIGNER
JESSE GREEN

SHEET INDEX

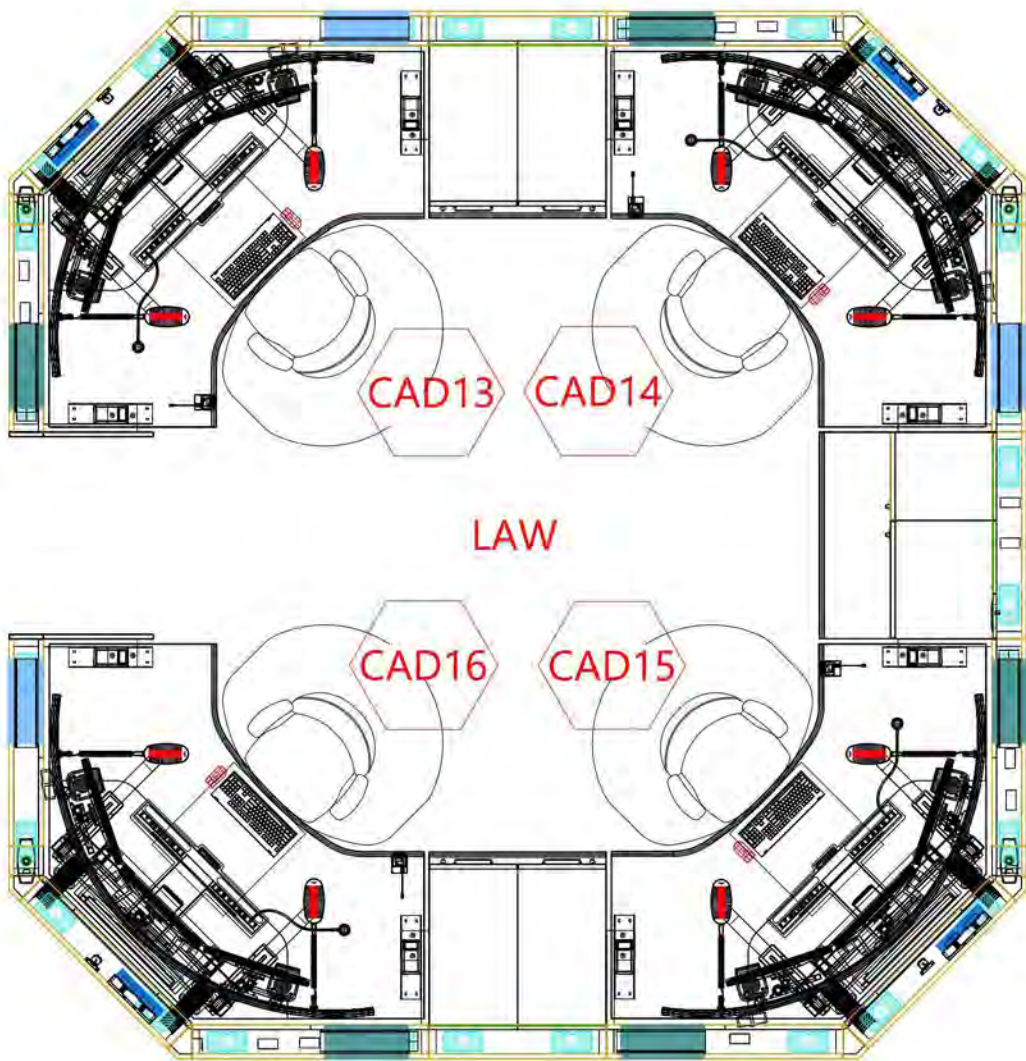
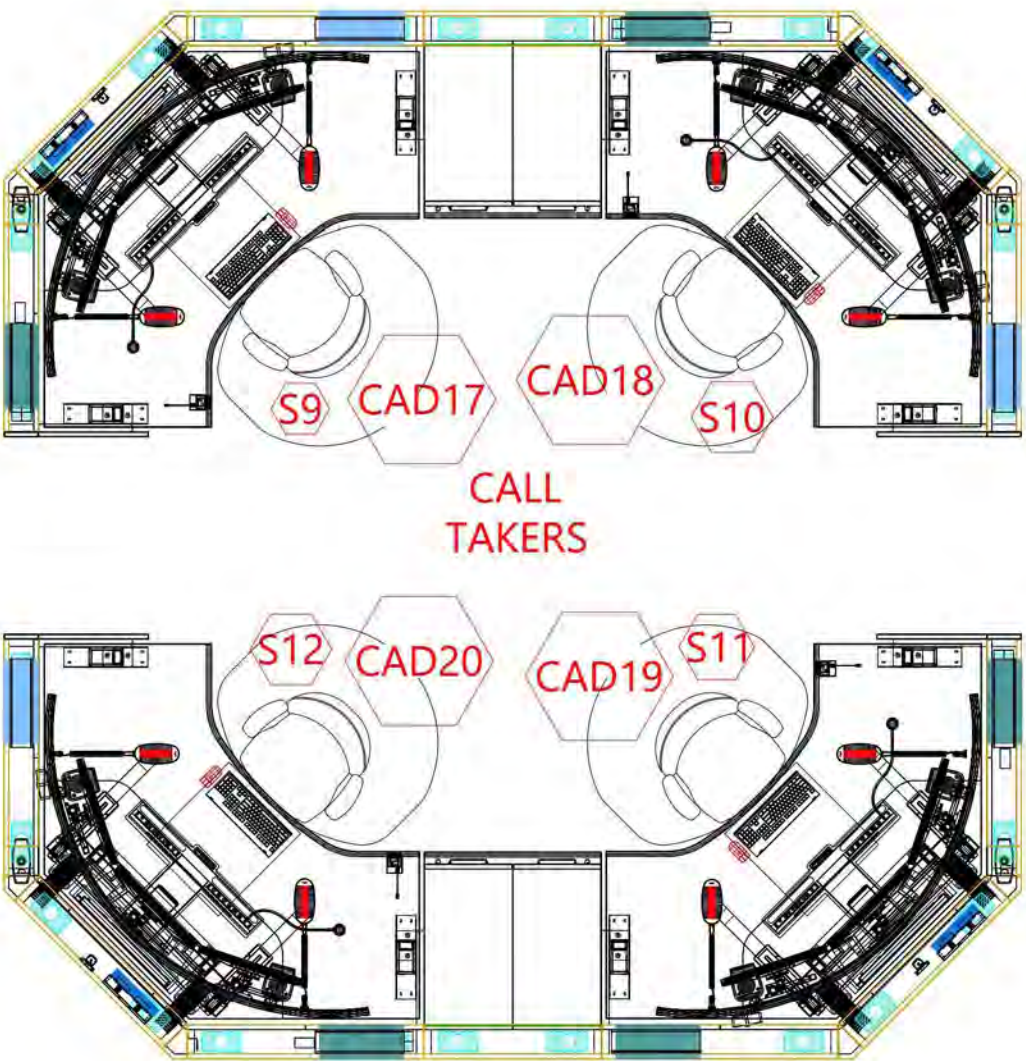
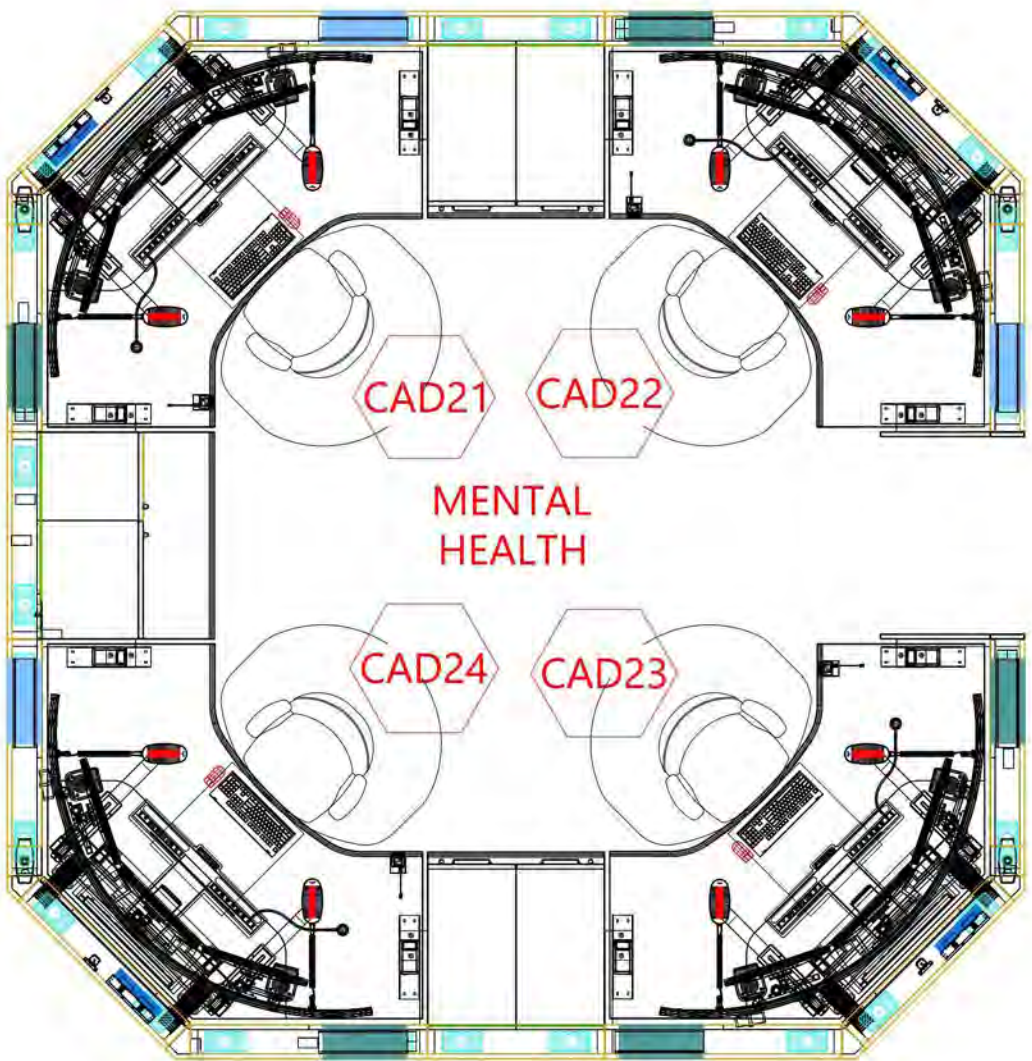
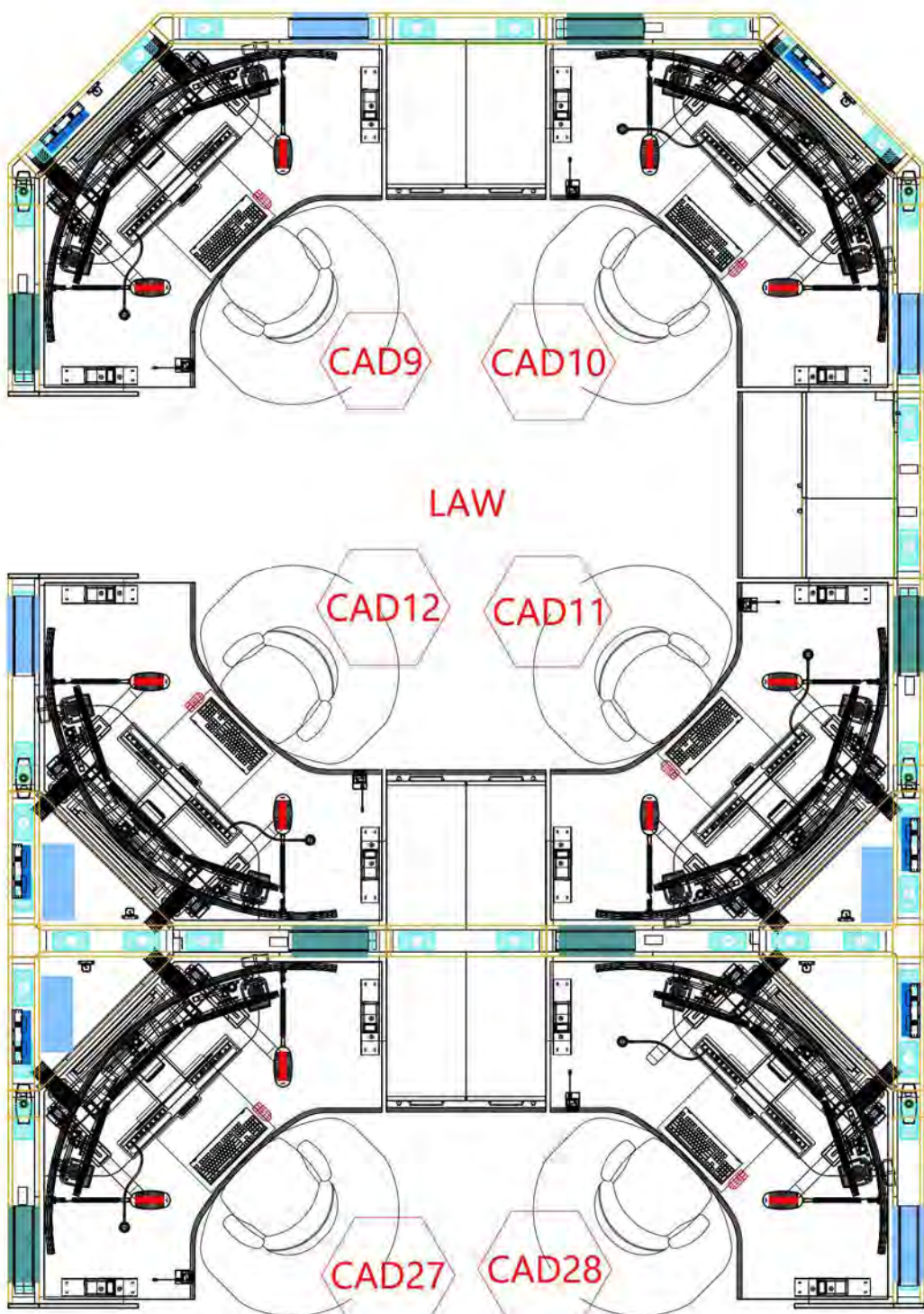
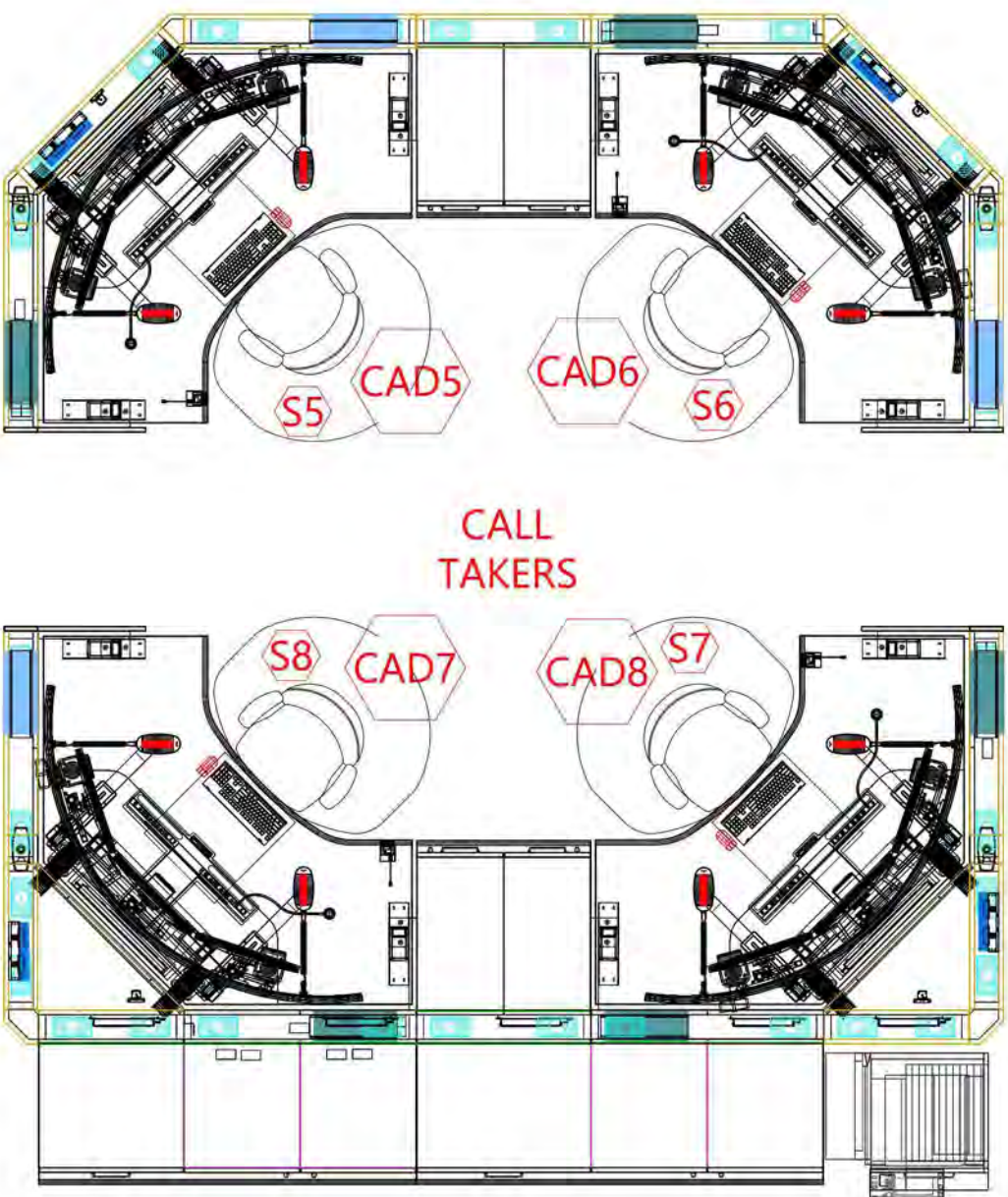
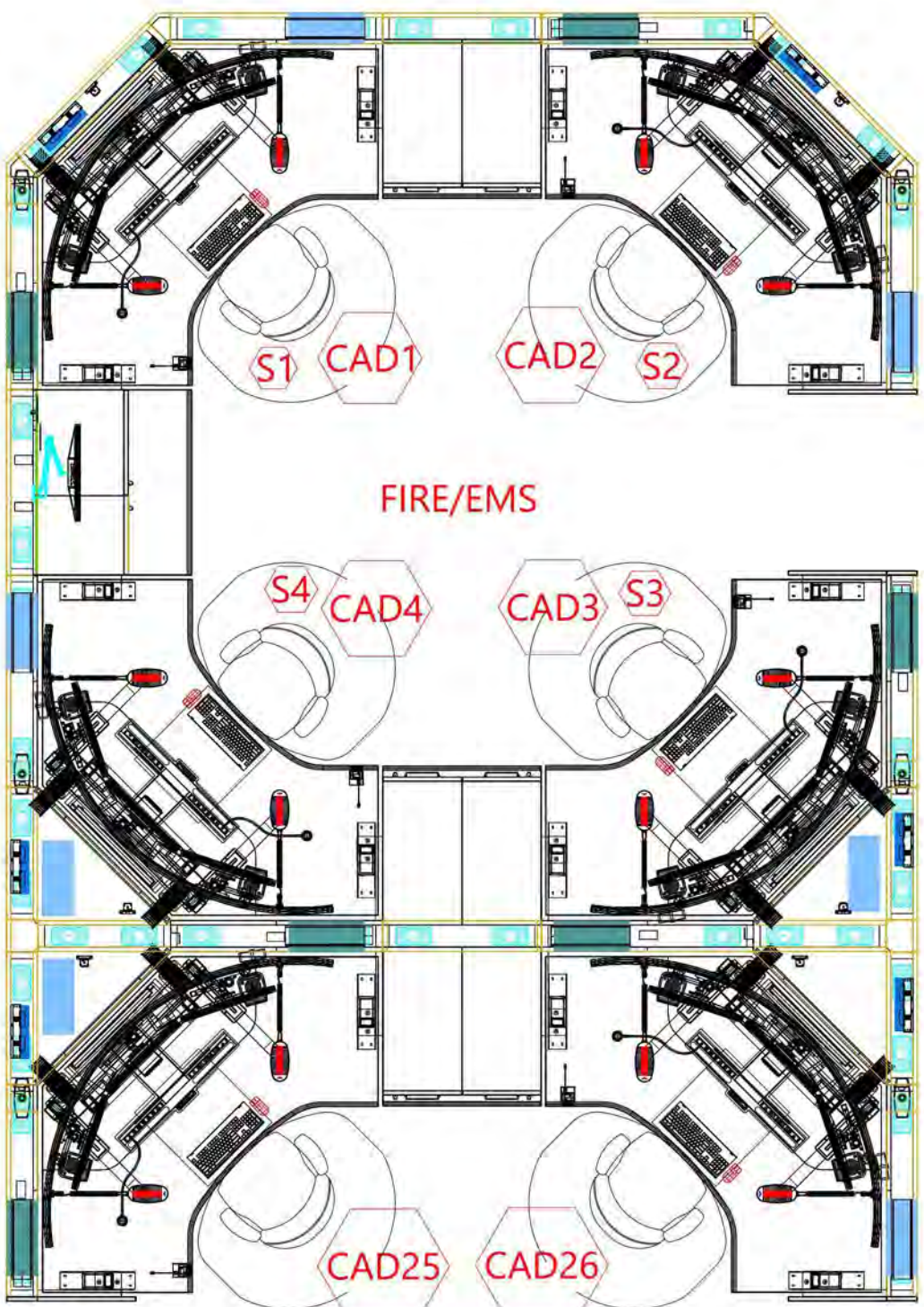
NO.	SHEET NAME
1	3D VIEW 1
2	3D VIEW 2
3	PLAN VIEW
4	ELEVATION A
5	ELEVATION B
6	ELEVATION C
7	EQUIPMENT FIT
8	
9	
10	
11	
12	
13	
14	
15	

REVISIONS

REV	DATE	DESCRIPTION	BY
A	03/14/22	FULL DRAWING PACKAGE	JG
B	03/28/22	REVISE ROOM & CONSOLE SIZE	JG
1	11/09/22	UPDATED SS. REMOVED TECH PEDS.	TC
1B	11/21/22	UPDATED WALLS ON BACK TO BACK	TC

SHEET DESCRIPTION
EQUIPMENT FIT

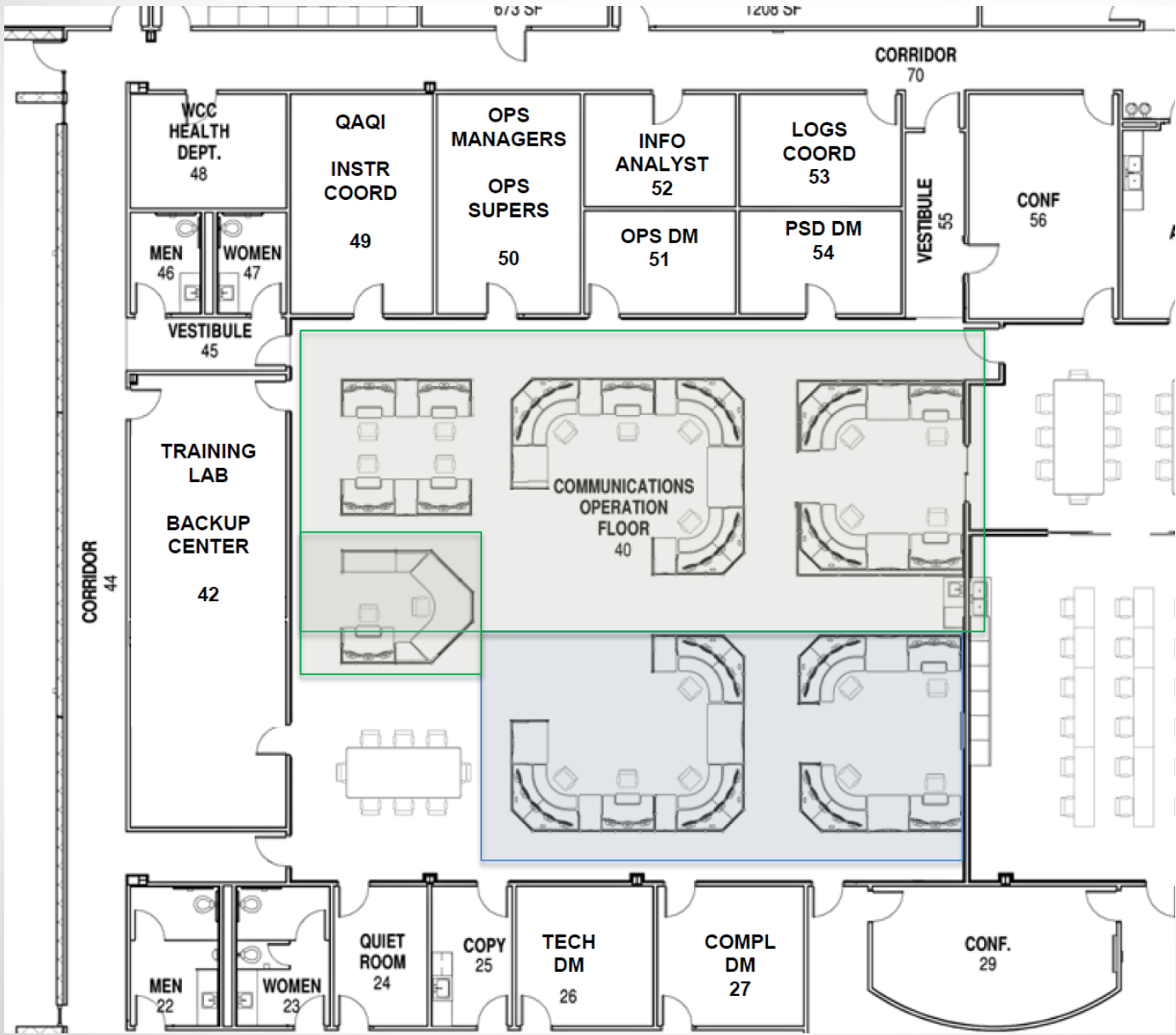
DRAWING #	OPTION	REV.	SHEET
PN-10050-01	1	B	7 / 7




EQUIP.	DESCRIPTION
	CAD CPU - 7"x17"
	911 CPU - 7"x7"
	RADIO CPU - MICRO PC



PHASE PLAN (REMOVAL)

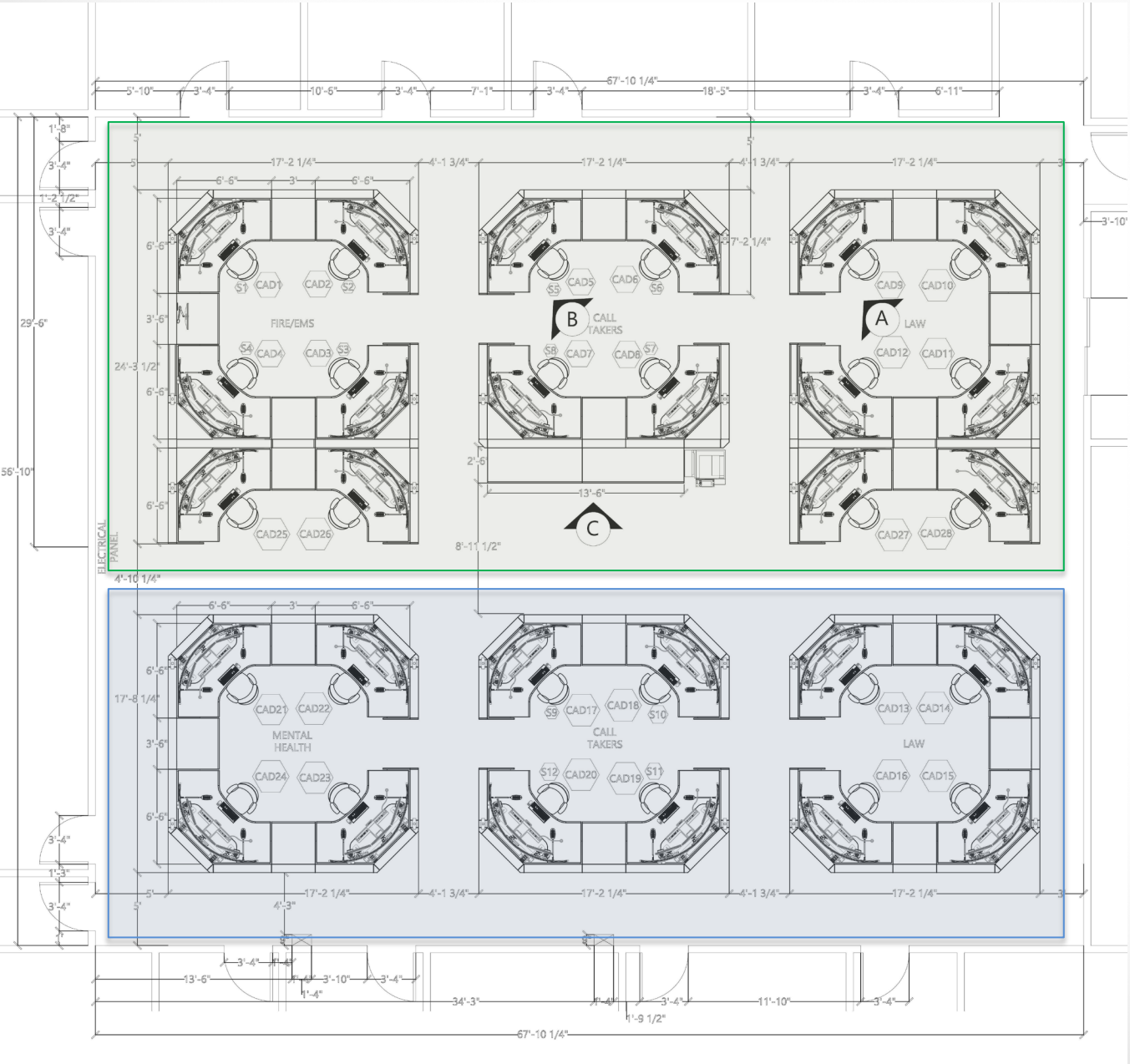


 **PHASE 1**
(14) POSITIONS
REMOVED

 **PHASE 2**
(8) POSITIONS
REMOVED



PHASE PLAN (NEW CONSOLE INSTALLATION)



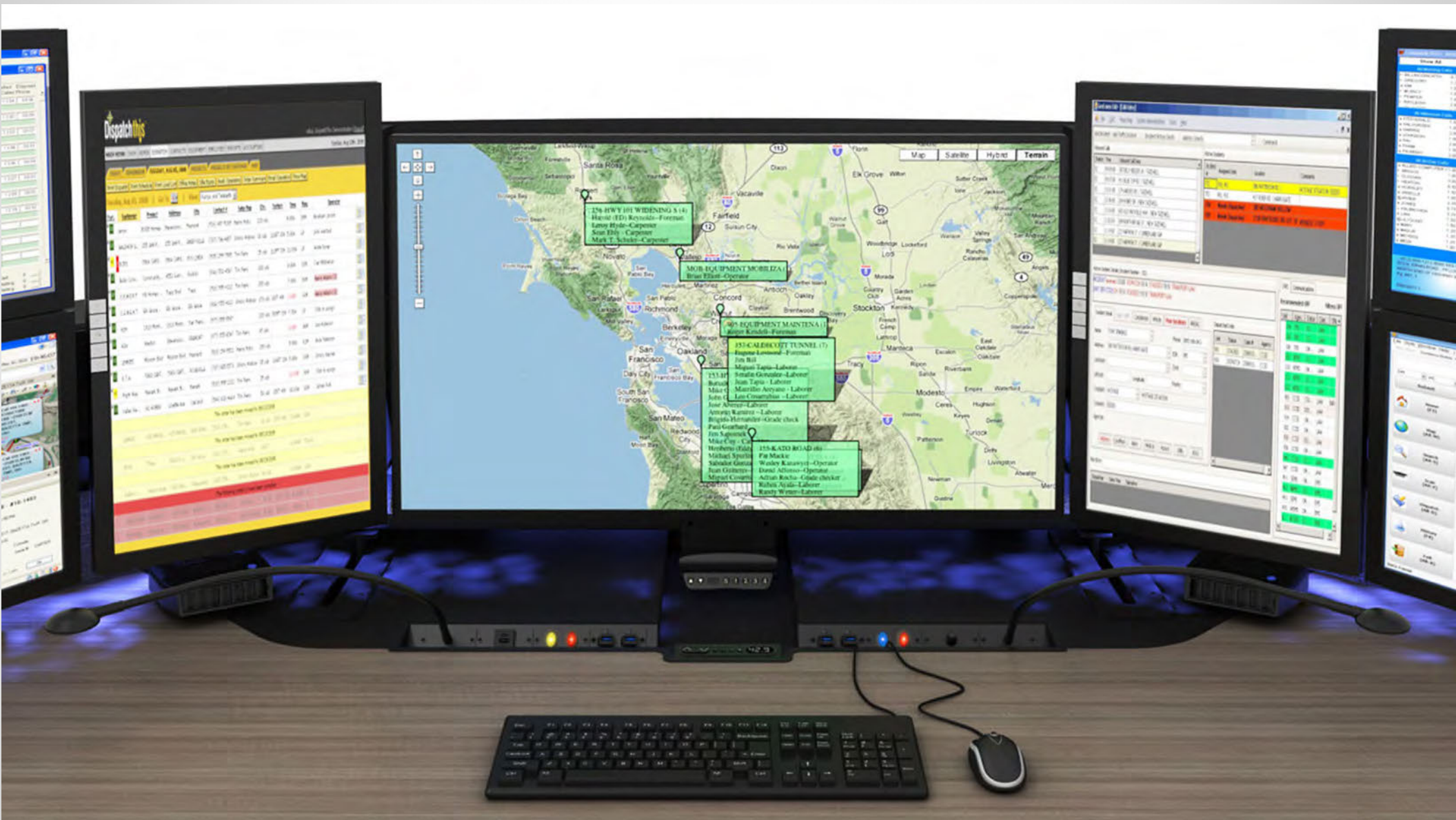
PHASE 1
(16) POSITIONS
INSTALLED



PHASE 2
(12) POSITIONS
INSTALLED



2022 CONFIGURABLE DASHBOARD



RECESSED DASHBOARD FOR SIMPLE, INTUITIVE INTERACTION WITH ALL CONSOLE CONTROLS

PROPOSED LOCATION FOR PERSONAL CONVENIENCE OUTLETS, GOOSENECK TASK LIGHT, MANUAL "HELP" LIGHT SWITCH, ANY HOT-SWAP USB KEYSTONES, HEIGHT ADJUSTMENTS, PERSONAL COMFORT SYSTEM CONTROLS AND AMBIENT LIGHTING DIMMER SWITCH

[BRIEF DEMONSTRATION VIDEO IS AVAILABLE HERE](#)



2022 ENHANCEMENTS

 russbassett



THE 2022 RUSS BASSETT SIT-STAND ARRAY CONSOLE HAS SIGNIFICANT ENHANCEMENTS OVER WHAT WAS SEEN AT HAYS COUNTY INCLUDING A RECESSED DASHBOARD, IMPROVED REDUNDANT ANTI-COLLISION TECHNOLOGY AND ROLL OFF TECH PED COVERS

New and Improved Adjustable Monitor Array Sit-Stand Consoles

Dear Valued and Prospective Russ Bassett Customers,

Like automotive manufacturing, console furniture design regularly evolves around new technology, innovation, and customer feedback.

We are excited to introduce the new and improved, 2022/23 model year adjustable monitor array sit-stand to our already market leading Flex and Define Console product platforms!

The new adjustable array sit-stand console model features a Sub-Flush Dashboard to allow the bottom bezel of the monitors to get even lower, extra Dashboard Cartridge bays for added convenience and control functionalities, compressed monitor array envelope enhancing ergonomic focal depth adjustment, an upgraded array height controller, a removable rear monitor array shroud, and additional anti-collision technology.





Here is a little more information on each enhancement:

✓ SUB-FLUSH DASHBOARD

The dashboard has been recessed into the work surface for a cleaner look and to allow monitors to get even lower. Monitors can now skim just above the work surface, provided the Personal Comfort System fans are moved out of the way. Our previous model was already supportive of a neutral-to-downward gaze, but for those customers who have stacked monitor applications and are coming from a “split-surface”, allowing the monitors to get closer to the large single piece work surface reduces the challenge of the change for the team.

✓ EXTRA DASHBOARD BAYS

The Dashboard has been redesigned to utilize a new Faceplate design, which is smaller than the old spring cartridges. Combined with moving the desktop controller to the center, this change now gives the customer eight (8) configurable bays rather than six (6). This means there are more configuration options and removes the challenge of running out of ports for control functions when you want to do it all (manual situational awareness light switches, gooseneck lights, USB ports, convenience power, ambient lighting dimmer).



COMPRESSED ARRAY DEPTH

This new array design requires a shallower structure behind it, which has allowed us to push the array about 4" further back relative to the front of the work surface. This change has multiple advantages including more available monitor fit width, the capability to get the monitors further away, which is particularly helpful when larger screens are used and also that the Dashboard is always exposed even at full forward array position.



ARRAY CONTROLLER UPGRADE

The new array lift system includes a nice height control that is located at the same point as the focal depth handle and now includes a digital display reading the array height in inches (0 to 11), height memory presets and can display error codes in the unlikely situation your monitor array requires service.



REMOVABLE REAR SHROUD

To enhance users' line of sight to video walls and out from Supervisory positions, we have changed the monitor array structure in a way that makes the rear shroud purely cosmetic. Still desirable in open plan environments, when and where appropriate, it can be removed!



NEW COLLISION DETECTION TECHNOLOGY

Last but not least, we have integrated a new collision detection technology into the 2022/23 Array Console that provides an additional level of protection if a collision should happen outside the area of the currently deployed lap bar. This new system utilizes gyro, accelerometer and vibration detection sensors to provide additional protection and will be used in conjunction with the lap bar. We are the only manufacturer on the market with redundant collision detection systems.

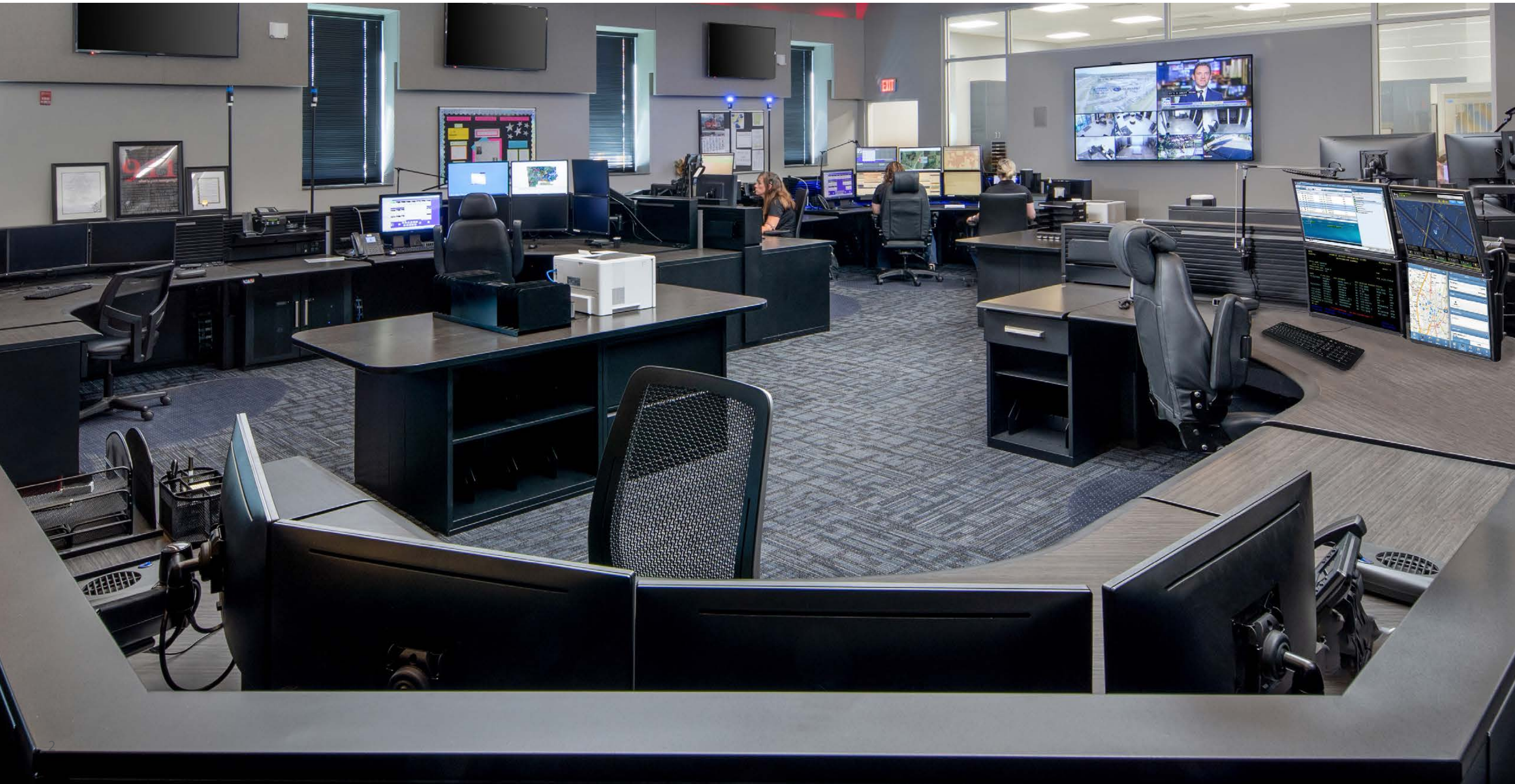
FlexConsoles



THE FLEX ADVANTAGE

Console furniture designed to directly support your team's communication, health and engagement goals.

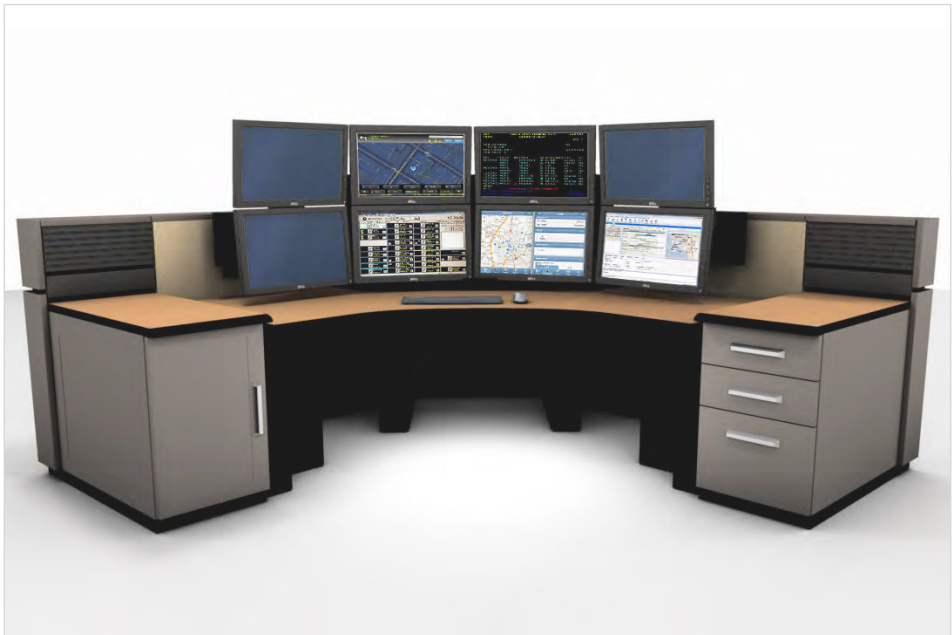
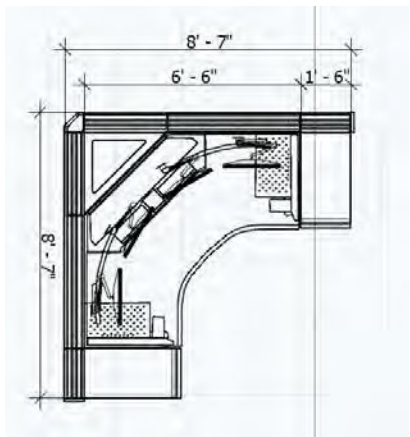
Choose from a variety of shapes and sizes to create a workplace that meets your operator and technology needs, today and tomorrow.



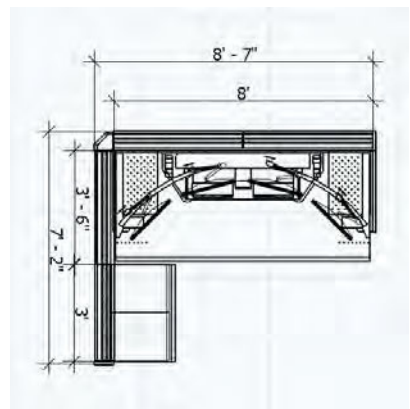
GIVING YOU THE FREEDOM TO CHOOSE

Both corner and linear consoles consume a similar footprint which gives you the freedom to choose the style that is right for your team.

90° Corner Console

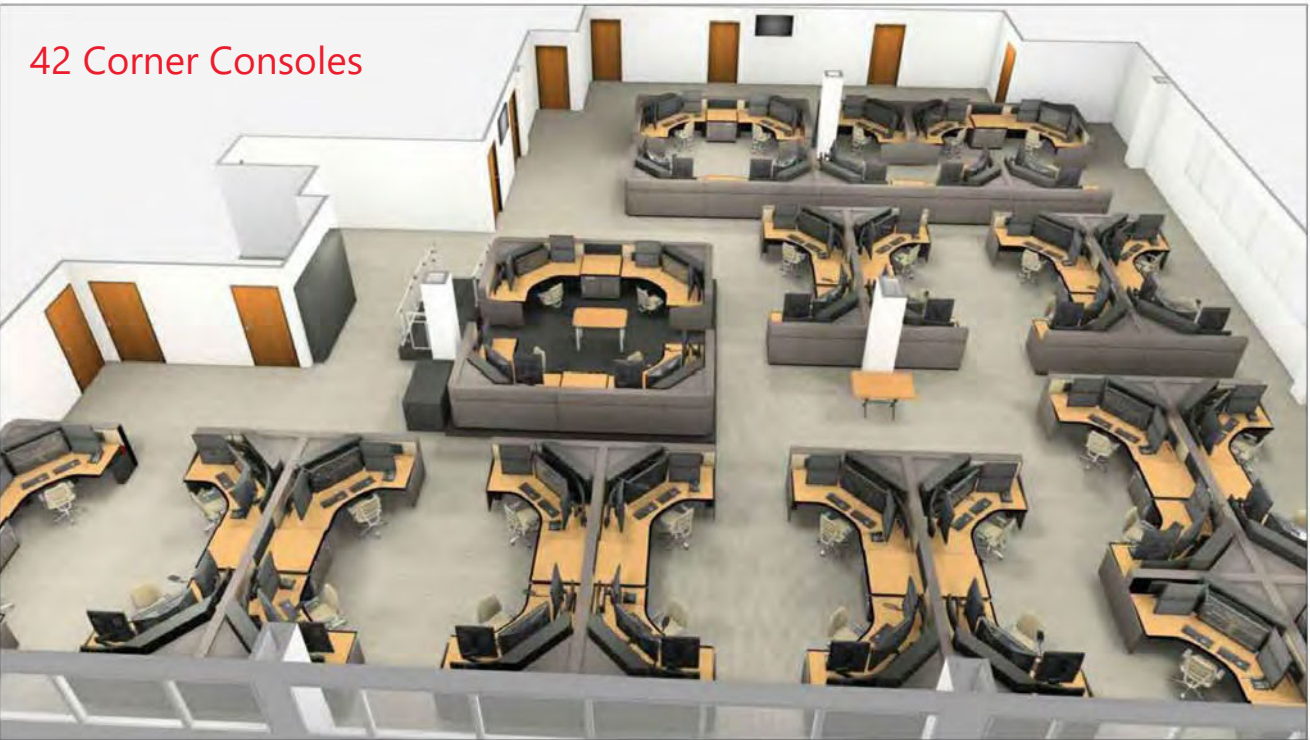


Linear Console

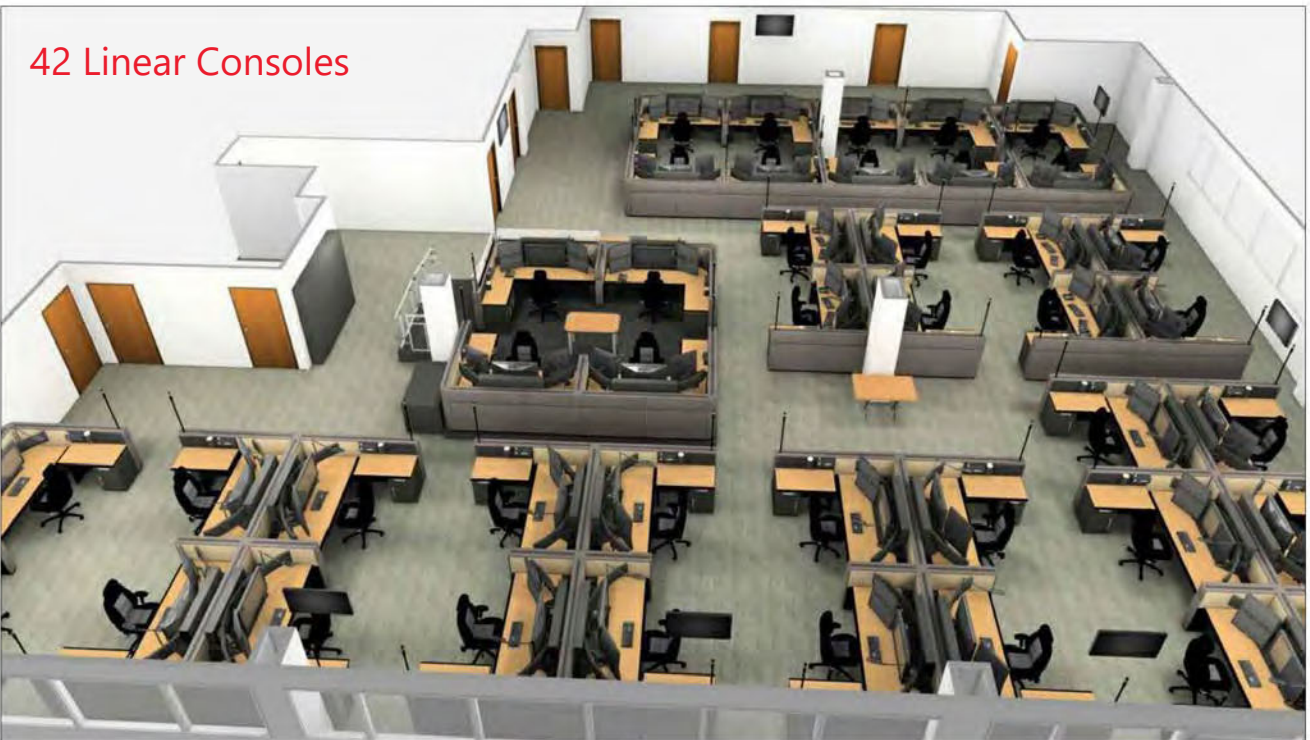


This side-by-side comparison shows 42 corner consoles and 42 linear consoles planned into the same space.

42 Corner Consoles



42 Linear Consoles

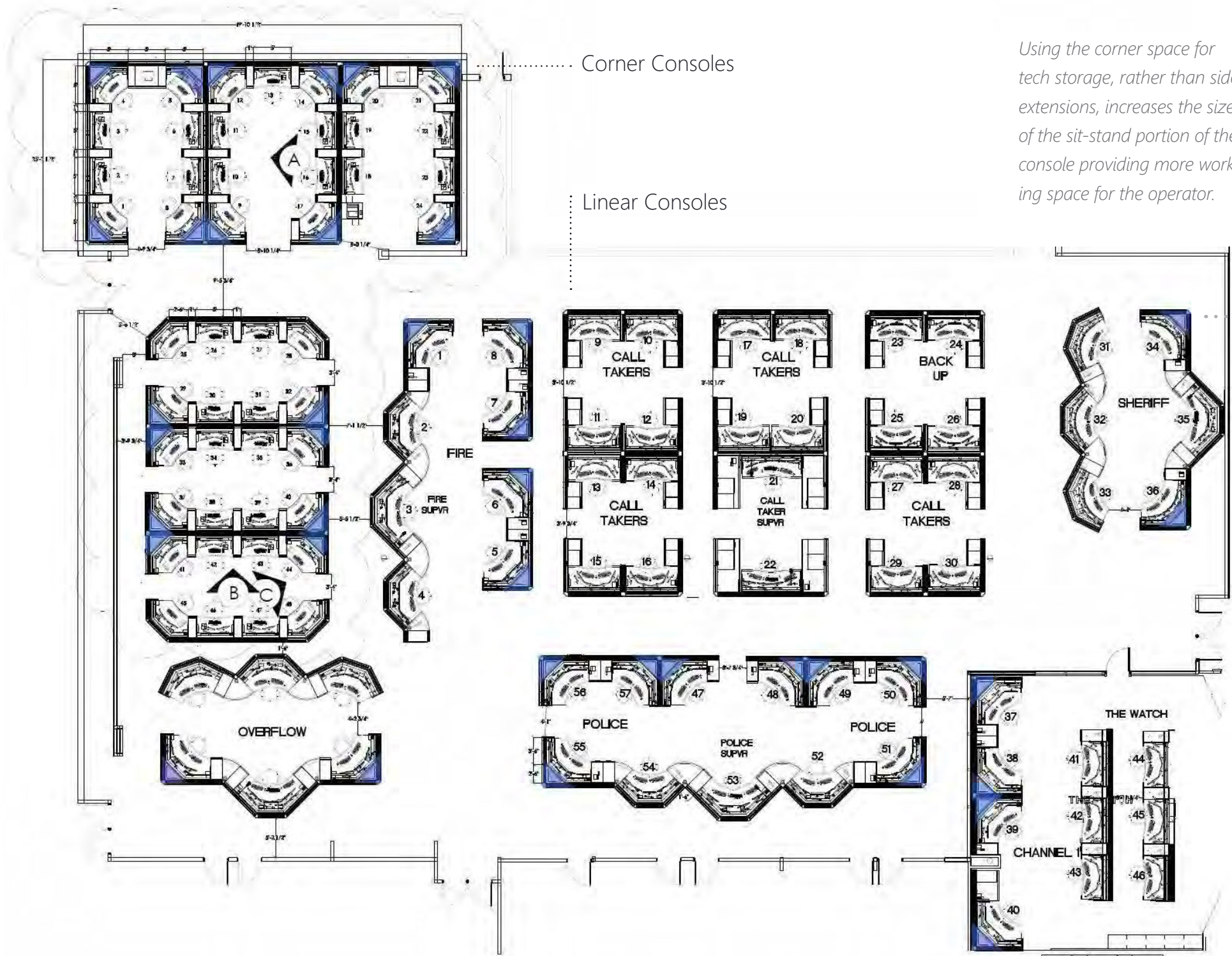


MAXIMIZING SPACE AND WORK FLOW

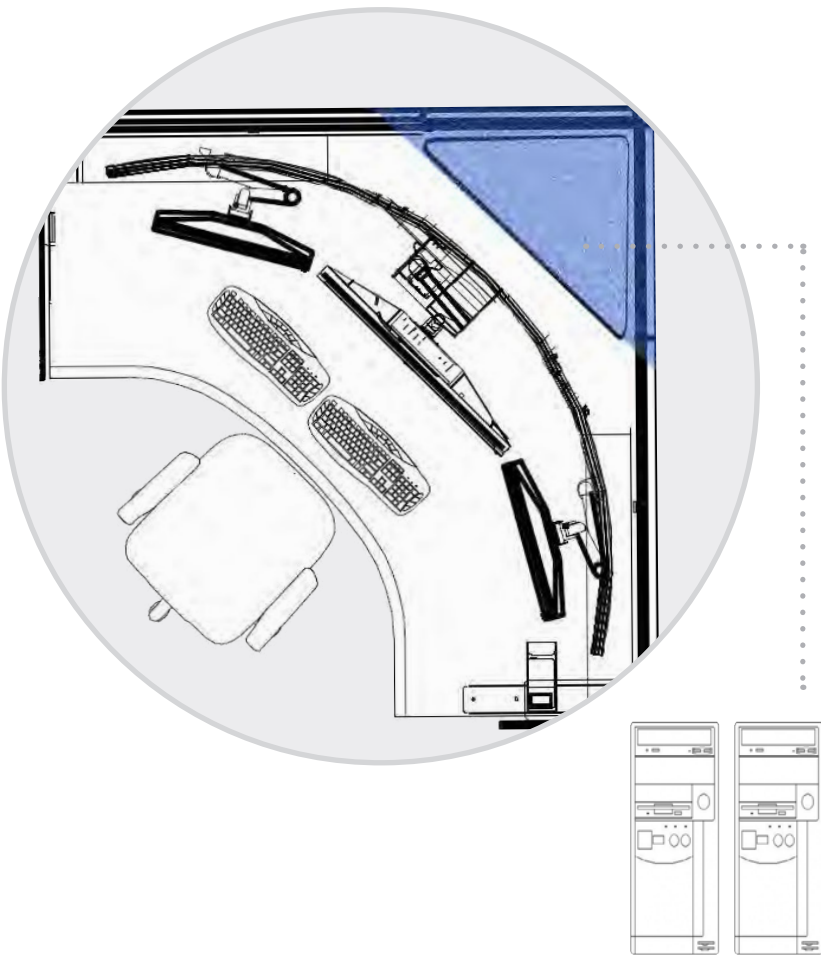
For agencies with unique room architecture or dedicated response teams, consider planning with corner and linear consoles to improve use of space, traffic and communication flow.

ZERO WASTE!

Russ Bassett 90° corner consoles make use of the back corner for technology and equipment storage. Zero wasted space means teams can choose a corner console and know they are getting a workstation that is comfortable and space efficient.



Using the corner space for tech storage, rather than side extensions, increases the size of the sit-stand portion of the console providing more working space for the operator.



This consolidated agency selected a blend of console shapes and sizes to best support workflow and the varied technology requirements including the number of monitors and equipment storage.

SINGLE SURFACE, DUAL LIFT

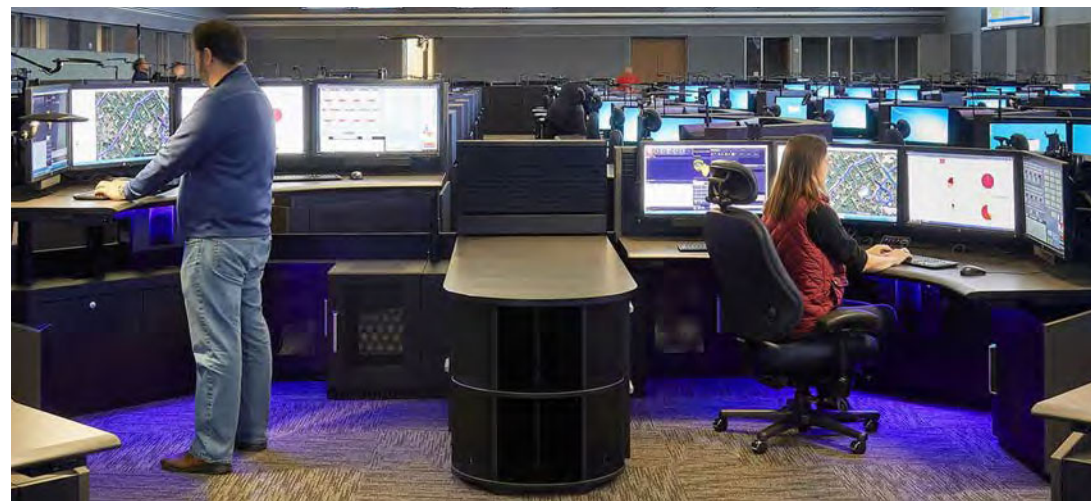
Heavy duty lifting columns support a height adjustable surface. A second set of lifting columns support a height adjustable monitor array.

Single Surface



An expansive work zone helps operators stay organized and provides plenty of room for side-by-side training.

Ergonomic Benefits of Single Surface, Dual Lift



Height Adjustment

Promote musculo-skeletal health by accommodating the 95% male, the 5% female and everyone in between.

Adjusting the worksurface and monitor simultaneously or independently delivers ergonomic comfort and ease of use for the tallest or most petite team members.

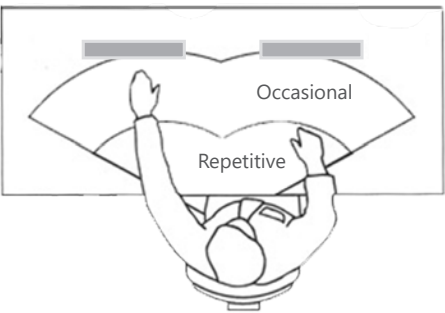
Dual Lift



- • • • 12" Monitor Height Adjustment
- • • • 48.7" Standing Surface Height
- • • • 26" Sit to Stand Range
- • • • 22.6" Seated Surface Height

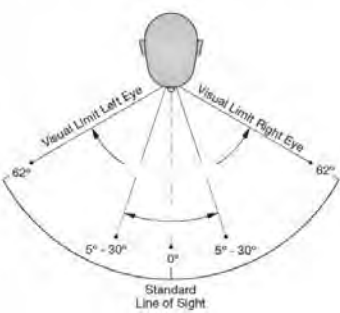
Reach Zones

To mitigate repetitive twisting and stretching, user controls are located within the dispatcher's primary reach zone.



Monitor Viewing

The curved Slatwall Monitor Array's range of height and focal depth adjustment promotes healthy viewing distance and angle, reducing eye strain and neck tension.



USER INTERFACE

Whether your team prefers cockpit-style positioning or a more linear approach to the work surface, Flex has you covered.

Corner

The single wrap-around surface is flanked by technology and/or personal storage.



..... SHARED FEATURES

Monitor Array with 12" Monitor Height Adjustment

Expansive Single Surface with 26" Sit to Stand Adjustment Range

Unencumbered Knee Space

.....

Both console styles share a set of features that help operators remain comfortable and attentive.

Linear

A linear work zone allows operators to spread out and makes side-by-side training more comfortable.



.....

The Endure comfort edge is directly molded to the substrate for a watertight seal and ultimate durability - no marring, no curling, no peeling.

Add optional Personal or Technical Storage Returns

.. SHARED FEATURES

Customizable Dashboard

Located within easy reach, your console Dashboard comes with surface height and monitor height adjustment controls. You may add up to six additional cartridges.

Accessory Options:

- Dimmable Task Light
- Quick-Connect USB Ports
- Personal Comfort System Controls
- Convenience Power
- Situational Awareness Alert
- Ambient Lighting Dimmer



Universal Personal Comfort System

Cooling and heating at the console allows operators to achieve personalized comfort throughout their shift, helping reduce tension and boost focus.



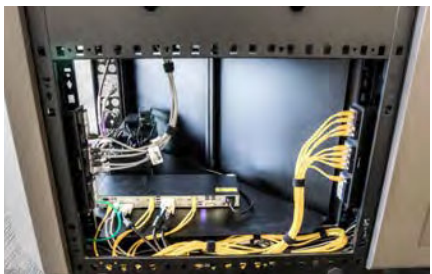
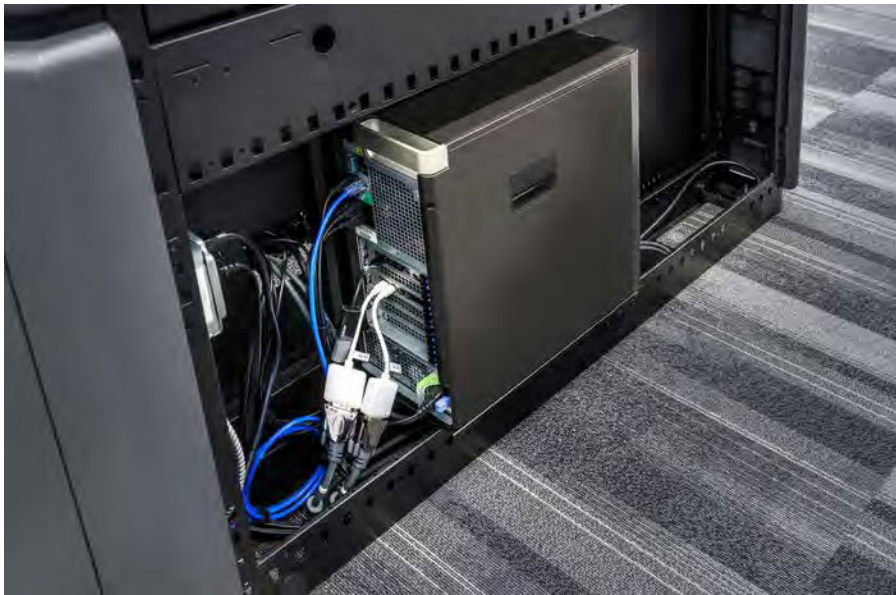
The Personal Comfort System includes two (2) under-surface, tilting heaters and two (2) freestanding desktop fans with centralized Dashboard controls. All appliances are energy efficient and ultra-quiet.

TECHNOLOGY INTEGRATION

Flex’s tech integration foundation is the 7” deep, steel Technology Wall. The structure encircles the console and holds critical equipment.

Equipment Storage

The Technology Wall, including the rear corner on 90° consoles, has ample capacity for mid-sized towers and equipment.



Optional cabinets placed alongside the console expand equipment capacity.

Power, Data and Grounding

Power, data and grounding terminate within the Technology Wall.



Additional Storage

All technology cabinets are passively cooled by design. Rear cable pass-through opens to the adjacent Technology Wall. Optional pull out shelf eases access to the back of PCs and equipment.



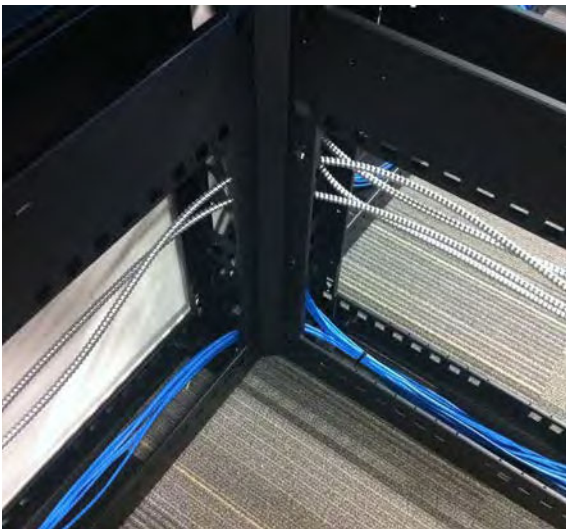
Rack Mounting

The Technology Wall and ancillary technology storage cabinets are rack mount ready.



Wire Management

High capacity cable chases and energy chains keep power and data cords protected from crowding and disconnection.

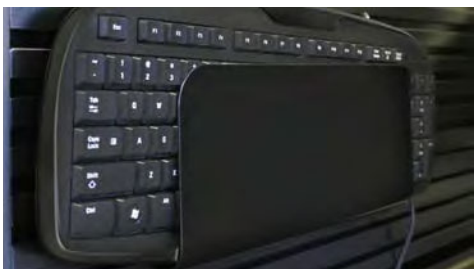
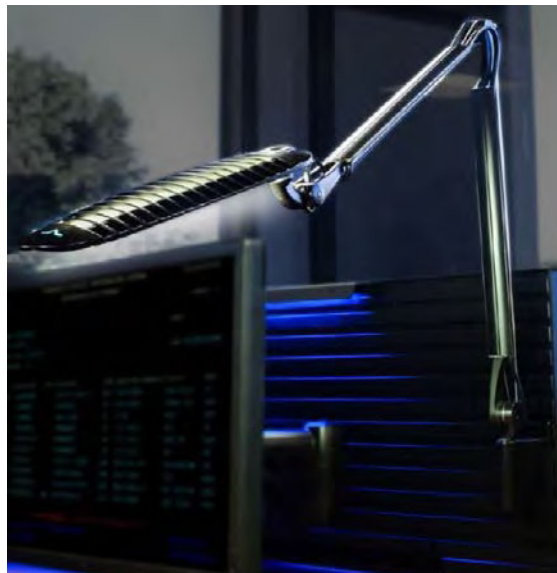


ACCESSORIES, LIGHTING & RECOGNITION

Mission critical teams are most efficient when console workspaces are comfortable and organized.

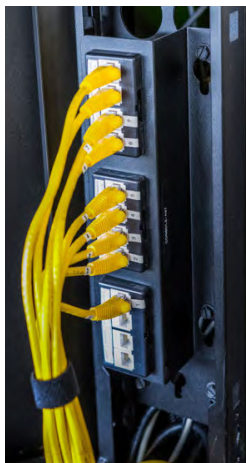
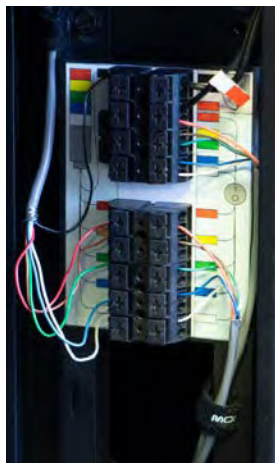
User Amenities

Pictured clockwise are the slatwall mounted Task Light, Sanitation Station, Keyboard Taco (other Slatwall Tools available), and Situational Awareness Light with Position Sign.



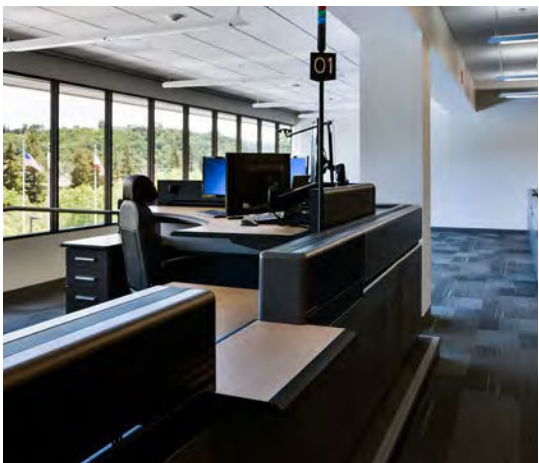
Tech Integration

Simplify installation with the Situational Awareness Light Connection Kit, Data Termination Bracket, Micro PC Mounting Bracket, and Technology Wall PC Tray.



Custom Solutions

Transaction counters and other unique solutions ease work flow and help teams stay connected.



Ambient Lighting

Adjustable ambient lighting, above and below the console surface, complements conventional lighting with a calming blue tone. Blue LED lighting reduces monitor glare in ultra-bright and low light areas.



Etched Glazing

Up-lit etched glass boosts agency pride and reinforces your agency's mission.



Logo Panels

Logo panels add full-color badging for teams seeking additional way-finding and agency recognition.



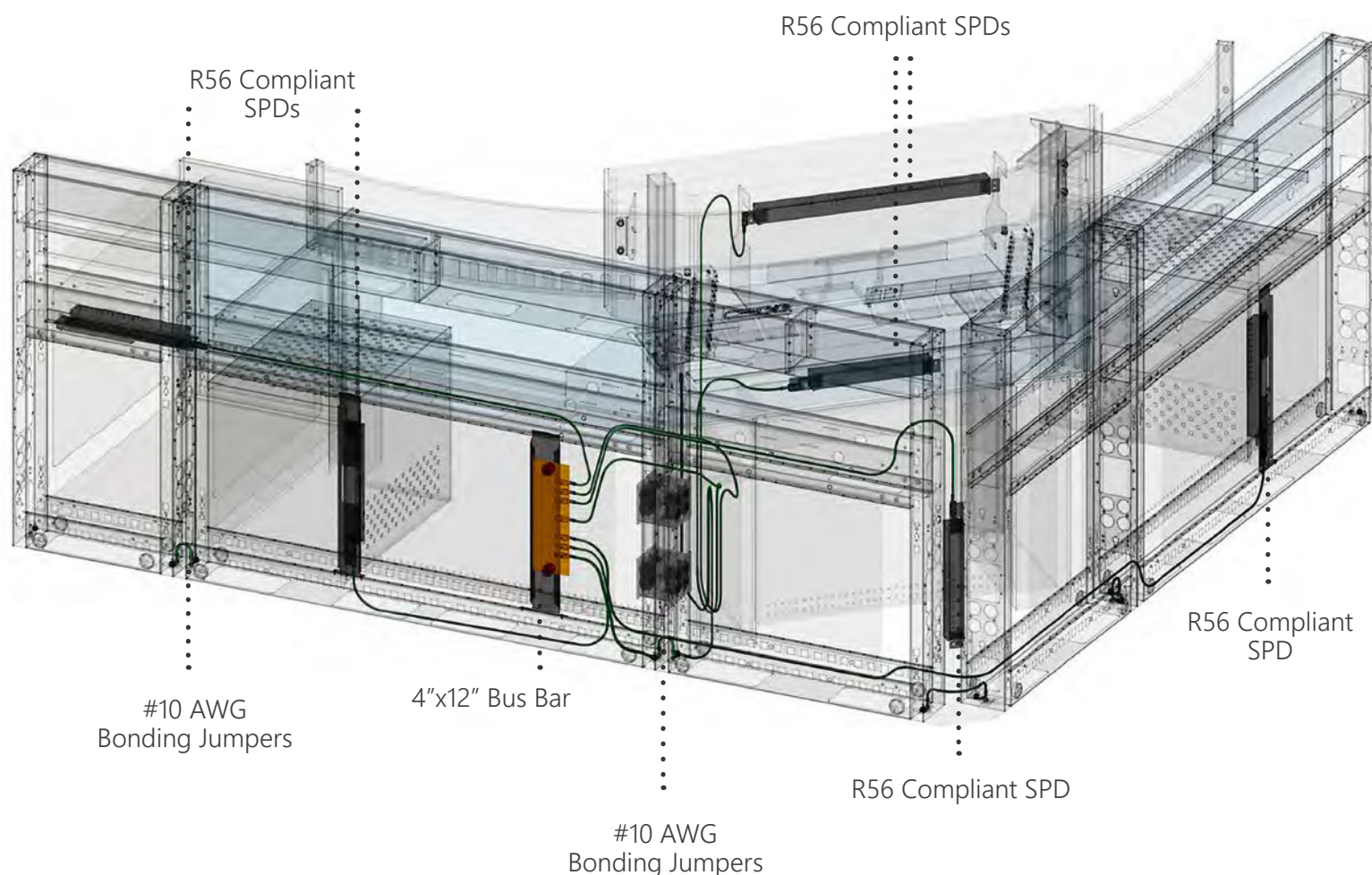
R56 BONDING AND SPD KITS

Grounding

R56 COMPLIANCE 101

Developed and maintained by Motorola Solutions, R56 takes into account fire, electrical codes, tower grounding and construction codes, and industry codes to ensure fire protection, operator safety and equipment protection through proper installation, grounding, bonding, and surge protection. It is considered the industry standard for correct bonding, grounding, surge protection and installation practices for radio towers and control rooms.

Russ Bassett has collaborated closely with co-authors of the R56 standard to develop a range of R56 compliant bonding, grounding and surge protection systems to fit your needs and budget.



GET TO KNOW THE R56 COMPONENTS

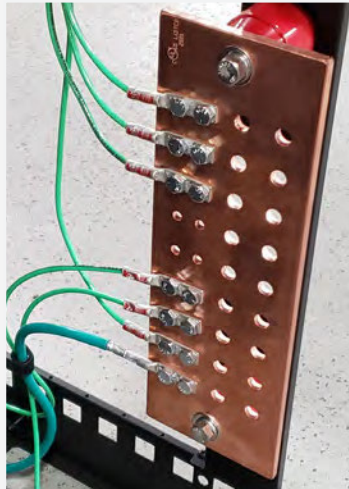
Surge Protection Device SPD

Metal Housing, External Double-Lug Bonding Connection Site, #10 AWG Double-Lug Bonding Wire, Covered Switch



Bus Bar

4" x 12", 1/4" Thick Copper, 1/4" Holes, 3/4" O/C and 3/8" Holes, 1" O/C, #10 AWG Double-Lug Bonding Wire to Frame



Bonding Jumpers

Frame to Frame Bonding, Frame to Sit-Stand Bonding



AVAILABLE R56 KITS

KIT #1: FULL R56 COMPLIANCE

The Full R56 Compliance Kit includes one (1) R56 compliant 14-outlet SPD, one (1) R56 compliant 6-outlet SPD, one (1) 4" x 12" Bus Bar, and all required #10 AWG Bonding Jumpers for the console.

KIT #2: R56 CONSOLE AND EQUIPMENT BONDING

For customers who need to bond their equipment and console, but do not need R56 compliant SPDs, this kit delivers one (1) 4" x 12" Bus Bar, and all required #10 AWG Bonding Jumpers for the console. *NOTE: For customers using a rack-mounted PDU located within the console frame, extra-long monitor power cables will be required.*

KIT #3: R56 CONSOLE BONDING

#10 AWG Bonding Jumpers provide R56 compliant bonding of the console for customers that do not need equipment bonding or R56 compliant SPDs.

Add-On: R56 Compliant SPDs

Available separately, specify additional SPDs for peripheral technology storage areas.

NOTE: All console-integrated bonding connections are installed by our certified installers, up to and including the Bus Bar, creating a "bonded console." After console installation, a certified electrician must connect the Console Bus Bar to the Sub-Bus for the control room with #2 AWG wire, or larger conductor, to "ground" the console.

COMMUNICATION

Situational Awareness Light



SITUATIONAL AWARENESS LIGHTS

The LED Tower Light allows multiple situations to be displayed simultaneously, signaling when an operator is available, on a call, in need of critical assistance and more.



- Lenses are visible from any direction and distance and multiple colors can light at the same time to indicate several equally relevant conditions.
- Mounting on an extension slatwall or a Flex top cap maintains a consistent height regardless of varying console positions. You can also mount to the Slatwall Monitor Array if preferred. Multiple pole lengths are available to dial in the desired height.
- Tower fixtures are pre-wired for five colors (red, amber, blue, green, white). To add an additional color in the future, simply connect the corresponding wire to activate that color.

The LED Dome light allows up to four colors (red, amber, green, blue) and up to two situations to be displayed simultaneously with a single lens.



- Lenses are visible from any direction and distance and up to two colors can light at the same time to indicate simultaneous relevant conditions.
- Mounting on an extension or a Flex top cap maintains a consistent height regardless of varying console positions. You can also mount to the Slatwall Monitor Array if preferred. Multiple pole lengths are available to dial in the desired height.
- Dome lights are pre-wired for four colors (red, amber, green, blue). To add an additional color in the future, simply connect the corresponding wire to activate that color.

SITUATIONAL AWARENESS LIGHT ACCESSORIES

Maximize your Situational Awareness Light benefits with these optional accessories.



SIGN HOLDER

Metal-framed sign holder, with easy to remove diffusers on both sides, create instant recognition at a distance.



SUPERVISOR ALERT

Add a Supervisor Alert Switch at each position for immediate and unmistakable critical assistance requests. The back-lit toggle is available in multiple colors and sits within easy reach of the operator.



CONNECTION KIT

The Status Light Connection Kit powers your Status Light and makes wiring and switching easy.

OPERATOR COMFORT & FOCUS

Personal Comfort System



COMPLETE COMFORT WITHIN REACH

Cooling and heating at the console allows operators to achieve personalized comfort throughout their shift, helping reduce tension, increase energy, and boost focus.



Personal Comfort System (PCS)

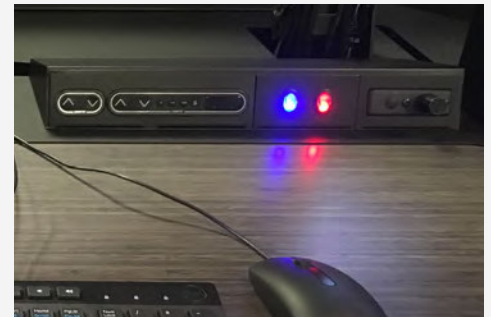
- 2 movable desktop fans
- 2 directionally adjustable heaters, mounted below the surface
- LED-lit control switch



Fans have directional airflow adjustment.



Each heater pivots up and down to focus heat toward the lap and toward the feet.



Operators control the PCS with a single-touch switch.

ADDITIONAL FEATURES

Energy-efficient and ultra-quiet
Simple, intuitive controls
Directionally adjustable forced air heaters
Movable desktop fans
Occupancy sensor
Compatible with all Russ Bassett consoles

SPECIFICATIONS

Cooling Fan	400 fpm
Forced Air Heat	200/400W
Maximum Current Draw	4.0 Amps
Voltage	120 Volts
Controls	LED Switches
Warranty	3 Years

OPERATOR COMFORT & FOCUS

Gooseneck Task Light



LIGHTING WHERE YOU NEED IT

The Russ Bassett Gooseneck LED Task Light is moveable and fully dimmable. It's positioned below the monitors to reduce screen glare and it provides a natural, even light that is ideal for calming eye strain in monitor intensive environments.

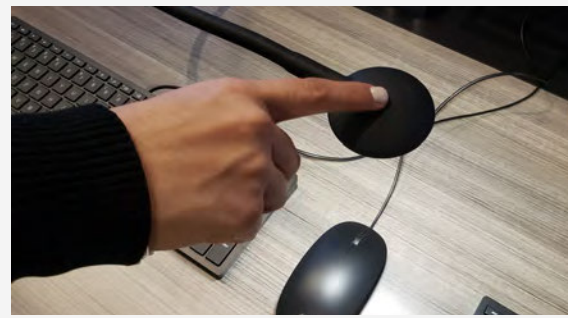


Gooseneck LED Task Light

- Located at the dash, consoles can be specified with one or more Task Light Dash Plates.
- The Touch Dimmer is on the lamp head for easy reach and allows the user to adjust lighting for optimal comfort in full-light environments and in lower-light applications.



Shielded lamp prevents screen glare.



Touch Dimmer on the lamp head provides easy-reach control.

FEATURES

Energy-efficient LED
Simple, intuitive control
Light pivots 180° up, down and side-to-side Bulb hood provides additional control of light flood direction
Compatible with all Russ Bassett Array consoles
Certified to meet FCC CFR Title 47 Part 15 Class B

SPECIFICATIONS

Power	150mA @ 12 Volts 38
Light Output	lumens
Color Temperature	4000K
Color Rendering Index	85CRI
LED Life Span	60,000 hours
Gooseneck Finish	Silicone rubber wrapped
Gooseneck Length	24"

OPERATOR COMFORT & FOCUS
LED Task Light



SLATWALL MOUNTED L.E.D. TASK LIGHT

Give each operator control of the lighting in their immediate work environment. The slatwall mounted LED task light allows each user to control the light level at their workstation for optimal comfort, reducing eye strain and fatigue.



Adjustment & Control

- With 28" of reach, the slatwall mounted LED Task Light provides ample coverage of the operator's workspace.
- The single-point, soft-touch power/dimmer control is located within convenient reach at the top of the task light.



Light Settings

- Three light settings allows the user to adjust lighting for optimal comfort in full-light environments and in lower-light applications.

FEATURES

Dimmable LED Light with three dimmer settings
Double extension counterbalanced arm
Slatwall mounted to save valuable workspace
Light head pivots 90° vertically and horizontally
Folds out of the way when not in use
Refractive lens creates an even, clear light pool

SPECIFICATIONS

Color Temperature	3800K
LED Life Span	50,000 hours
Electrical Input Power	High - 11 Watts Medium - 5.8 Watts Low - 1.5 Watts
Arm Extension	28" from fully folded

OPERATOR COMFORT & FOCUS

Ambient Lighting

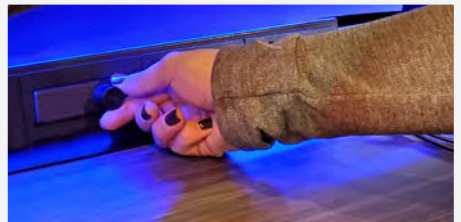


AMBIENT LIGHTING

Ambient lighting relieves eye strain and increases monitor image clarity for operators who spend extended hours in monitor intensive environments.



- Above the surface, ambient lighting softens glare in both bright and dimly lit rooms.
- Below the surface, ambient lighting provides both glare reduction and work light in the foot well, guarding against trip hazards and entanglement.
- A desktop dashboard dimmer, shown right, allows operators to dial in their preferred lighting settings and make adjustments throughout their shift. Dimmer also available to mount on a fixed slatwall return.



SPECIFICATIONS

Energy-efficient blue LEDs.
Light position shields operator's eyes from glare.
Soldered leads are protected with heat-shrink wrap for durability and lasting performance.

Lengths are specified to fit the console width.
Above-surface and foot-well lighting ordered separately.
Plug-and-play 12 volt power supply ordered separately.
Optional dimmer switch also available.

BEXAR METRO

9-1-1 Network

September 25, 2017

Matt Gawin, Sales Executive
Russ Bassett Corporation
8189 Byron Road
Whittier, CA 90606

RE: Russ Bassett PSAP Consoles

Dear Matt:

On behalf of the Bexar Metro 9-1-1 Network, I would like to thank you and the Russ Bassett Corporation for your outstanding service during the selection, design, procurement, and installation of the 104 PSAP consoles at the District's new Quarry Run Regional Operations Center in San Antonio, Texas. All Telecommunicators and Dispatchers are very pleased with their new work environment and appreciate the "extras" that are included.

We especially appreciate how your team worked with the Bexar Metro Architect, General Contractor, Electrical Contractor, and our Operations and Facility Staff to finalize the design, construction, delivery, and installation of the consoles. It was truly a cooperative team effort to accomplish this successful endeavor.

I would like to personally thank Peter, Van, and you for your attention and responsiveness to our needs and desires.

If you would like to bring potential customers to the Bexar Metro Quarry Run facility to see the installed consoles, we would be happy to work with you to facilitate the visit.

Again, thanks for your outstanding service.

Sincerely,



Mike Pedigo
Chief Administrative Officer





Distribution Control
P. O. Box 1700
Houston, TX 77251-1700

January 28, 2011

Mr. Peter Fink
Russ Bassett
8189 Byron Road
Whittier, CA 90606

Re: CenterPoint Energy, Distribution Control Center Rebuild

Dear Mr. Fink:

On behalf of CenterPoint Energy and the entire Distribution Control team please accept our sincere appreciation for the incredible performance from you and your team over the last several months. The Distribution Control Center is required 24 hours a day all 365 days a year. As a regulated utility it is imperative that we purchase quality equipment that can stand the test of time to ensure that our rate payers get the maximum value for our dollars spent.

In considering our redesign we had the desire to find the most advanced system that we could while allowing for it to be modular and expandable. Your system has proven that we can have both. It has allowed us to be more ergonomically friendly for the users as well as bringing the control room's visual aesthetics up to a new level. After viewing several other manufacturers and selecting the Russ Bassett product we have been greatly impressed by its durability and function.

From our initial contact in Houston and multiple meetings that followed over an extremely tight time line, you have well exceeded our expectations. Every step of the way you listened to our needs and always found a solution. At times your team even went above and beyond to a point of helping design mounts for future hardware not even yet in production. There were never any excuses and never a problem you could not overcome. You are truly a business partner that we feel will continue to support our changing environment in the future.

As you are aware initially we had some serious concerns regarding your ability to accomplish the project within our compacted time line. Your focus on the project, the product quality, and attention to detail, was a truly a testament to the Russ Bassett teams ability to get the job done. The hands on approach by you and your management team is a sign of the company's leadership and commitment.

The new control center is state of the art and ready to begin the advancement of our Intelligent Grid operations. I would like to extend a thank you from me and CenterPoint Energy to you, Van and the countless others that made this project a success.

Respectfully;

A handwritten signature in black ink, appearing to read "Richard Orum", written over a horizontal line.

Richard Orum
Director of Distribution Control
CenterPoint Energy



POLICE DEPARTMENT

February 1, 2021

Matt Gawin
Russ Basset Corporation
8789 Byron Rd
Whittier, CA 90606

Dear Matt,

Now that our project is essentially complete, I would like to personally say thank you for the outstanding service provided by you and your team at Russ Bassett. I'm sure we weren't your only clients at the time, but you made us feel as if we were. Your organizational skills kept everyone continually informed and held everyone accountable to the timeline. I'm still amazed we stayed completely on schedule once the plan was set.

I also appreciate the patience you showed as we navigated through our own funding issues created by the COVID-19 pandemic and then accommodated our mad rush to complete the install before the end of the year. This required a large amount of coordination with several other vendors and two different IT teams working on the project, yet it all ran smoothly.

I couldn't be more pleased with the overall results. The new center turned out beautiful and the employees were so happy to move back in right before Christmas. We now have a professional, functional, state of the art facility that will serve us for many years to come!

Sincerely,

A handwritten signature in blue ink that reads "Renee Henshaw".

Renee Henshaw
Public Safety Communications Manager
Colorado Springs Public Safety Communications



"Safeguarding our Community as our Family"

705 South Nevada Avenue
Mailing Address: Post Office Box 2169 • Colorado Springs, Colorado 80901-2169



Sheriff Tracy Murphree



127 N. Woodrow Lane
Suite 300
Denton, TX 76205

DENTON COUNTY SHERIFF'S OFFICE

Phone (940) 349-1600
Fax (940) 349-1605

September 16, 2019

Matt Gawin, Sales Executive
Russ Bassett Corporation
8189 Byron Road
Whittier, CA 90606

RE: Russ Bassett 911 PSAP Consoles

Dear Matt,

On behalf of Denton County Sheriff's Office, I would like to thank you and your team for the excellent service during the selection, design, procurement and installation of our twelve new dispatch consoles. My staff is very happy with the quality and design of our newly remodeled Communications Center.

When we met to discuss the project, it was clear from the beginning that you understood my vision. Your ideas and recommendations were invaluable and allowed us to come up with the best design and use of the space. You and your team were adaptable throughout the process, even as we made changes to the floorplan and took out walls at the last minute. I appreciate the time you took to come see the space on multiple occasions as the remodel progressed as well as conference calls with the many members of the remodel team.

The installation process was well organized and couldn't have gone smoother. The team was efficient and finished ahead of schedule. The attention to detail was topnotch and everyone communicated with me and our remodel team throughout the installation.

The finished product is beautiful and our staff loves the new environment. Visitors are amazed at the professional look and state of the art consoles. It was a pleasure working with the Russ Bassett Team.

Sincerely,

A handwritten signature in blue ink that reads "Michelle Pena".

Michelle Pena
Communications Manager
Denton County Sheriff's Office



EL PASO COUNTY 9-1-1 DISTRICT

January 19, 2018

Matt Gawin, Sales Executive
Russ Bassett Corporation
8189 Byron Road
Whittier, CA 90606

RE: Russ Bassett 911 PSAP Consoles

Dear Matt:

On behalf of the El Paso County 911 District, I would like to thank you and the Russ Bassett Corporation for your outstanding service during the purchase and implementation of 60 plus Mission Critical sit/stand consoles for our new Regional Communications Center in El Paso, Texas.

In considering our design, your attention to detail during our discussions and your ability to make changes and provide solutions was very impressive and expedited the process of reaching a final proposal. Your professional design team deserves recognition for their work; I was so excited to open the emails every time we received a new design option to see the amazing new layouts until we reached the final design for procurement.

Matt, thank you for taking the lead in coordinating with the construction company, architect, electrical and data cabling subcontractors throughout the process which ensured a smooth path for preparation, delivery and installation on a very limited timeline. You really took the stress off and made it so easy for me. It was a great pleasure working with Scott Morsch, Russ Bassett Installation Manager.

Russ Bassett helped us accomplish a vision that had been in the works for several years. Our PSAP is state of the art, amazing and truly beautiful. The 911 telecommunicators and The Watch are very pleased with their environment and are taking very good care of their new consoles. It was a pleasure doing business with you and Russ Bassett; and hope to continue to work together in future endeavors.

Sincerely,

A handwritten signature in blue ink that reads 'P. Caldera'.

Patricia Caldera
Fiscal Manager
El Paso County 911 District



McLennan County 9-1-1 Emergency Assistance District

Proudly serving the citizens of McLennan County for over 30 years!

October 9, 2019

Mr. Matt Gawin, Sales Executive
Russ Bassett Corporation
8189 Byron Rd
Whittier, CA 90606

RE: Russ Bassett 9-1-1 PSAP Consoles

Dear Matt:

On behalf of the McLennan County 9-1-1 Emergency Assistance District, I would like to thank you and the Russ Bassett Corporation for the outstanding service during the design, procurement, and installation of the twelve (12) PSAP consoles at our new 9-1-1 back-up facility.

Throughout the entire process you were professional and treated us as if we were a much larger agency. You listened closely to our needs and presented a design that was exactly what we envisioned. Our Board of Managers as well as our PSAP supervisors are extremely pleased with the consoles.

We appreciate you and your team for working with our architect, general contractor, and various sub-contractors during delivery and installation of the consoles. The installation team, led by Scott Morsch, did a fantastic job and I was impressed at how quick and proficient they were.

The McLennan County 9-1-1 team is happy with the finished product and we would definitely recommend Russ Bassett Corporation to any entity looking for a professional company that specializes in high quality mission critical consoles.

Thanks again for the outstanding service!

Sincerely,

A handwritten signature in black ink that reads "Jesse A. Harrison".

Jesse A. Harrison, ENP
Executive Director



SOUTHWEST AIRLINES CO.

Dave Wotton
Director Automation & Support
Network Operations Control

2432 Wyman Street, Building B
Dallas, Texas 75235
(469) 602-0903

June 22, 2014

Peter Fink
Russ Bassett
8189 Byron Road
Whittier, CA 90606

Peter,

I wanted to take a moment to describe the outstanding experience that Southwest Airlines had with your company during our recent purchase of 250 sit/stand work consoles. You and your staff did a great job of ensuring that our new Network Operations Control (NOC) facility was ready with your workstations on time and that we were fully satisfied with the product.

In 2013, we put out an RFP to several vendors for sit/stand work consoles for our new NOC. Your team supplied the required demo product and installers and made a very strong presentation to our Sourcing Team in Dallas. Following that demo, we refined our requirements and scheduled a trip to Whittier to see your manufacturing facility and further discuss the design of a console.

The visit to Whittier was amazing to say the least. After touring your facility in the morning, we went to the show room and looked at several different designs. Our group was able to 'cherry pick' the features we liked from your products to customize the design you were recommending to us. While we were at lunch, several of these design changes were made to the demo unit so that when we returned from lunch, we were able to see the changes. The ability to make these changes so quickly was very impressive and expedited the process of reaching a final proposal.

While the RFP and trip to Whittier were in progress, we also made several trips to other air carriers to see their operations centers. During these trips, we discovered that many of our competitors use Russ Bassett work consoles. The employees in these centers could not say enough good things about their experience with your company—every one of these described the initial purchase and follow-up support as exemplary.

Based on your proposal, our experience at your facility, and the recommendation of our peers, we chose Russ Bassett to provide the work stations in our new NOC. The final negotiations went very smoothly and your team continued to work with us on the final product, right up until delivery. It was a very collaborative effort.

In February of this year, your installation team began installing our new work consoles. They produced a schedule, which you were able to adhere to in spite of some last minute changes. The work was completed on time and on budget. The little post-installation support we have required has been outstanding and we feel that we work with your company as a partner, instead of the traditional vendor relationship.

Your product is exceeding our expectations and the support we have received has been better than expected. As the leader of the design and build-out team, I wouldn't hesitate to recommend your product and your company to anyone. Thank you to you and your team.

February 11, 2022

Peter Fink-Executive Vice President
Russ Bassett Corporation
8189 Bryon Road
Whittier, CA 90606

RE: Russ Bassett PSAP Floor Design and Consoles

Dear Mr. Fink,

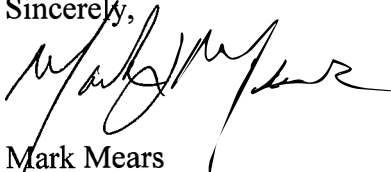
On behalf of South Sound 911 Communications Center, I want to recognize Russ Bassett who has been of primary support for the development and build out of our Communication Floor and furniture for our new Public Safety Communications Center. This \$59 million dollar critical infrastructure project houses and provides for emergency and public safety communications for both police and fire operations for Pierce County, Washington.

Matt Gawin and the entire Russ Bassett staff provided significant input and assistance in the overall design and development related to the Communication Center floor. In addition, their production and installation schedules were completed as established, providing us with exceptional furniture of the highest quality. This along with the completed on site work by their staff, made this Communications Center floor a showpiece of the new facility.

Russ Bassett has performed superbly on our project and has been a joy to work with. They brought knowledge, experience, integrity and a proven record of accomplishment to our project. Their assistance assured we achieved our goals related to the project from both a budget and functionality perspective. They contributed significantly to creating a state of the art PSAP that will support the citizens and public safety community for years to come.

It has been a pleasure to work with Matt and the Russ Bassett team, their participation has contributed to our projects amazing outcome. I cannot thank them enough for all their help and support during our project. I highly recommend them for any future design and development related to Communications Centers or Public Safety Buildings.

Sincerely,



Mark Mears
Deputy Director of Operations
South Sound 911

PRODUCT PROTECTION
10 YEAR EVERYTHING WARRANTY



10 YEAR EVERYTHING WARRANTY

Simple, Honest, Robust.

Russ Bassett warrants, to the original Buyer, that all products will be free from defects in material and workmanship for 10 full years.

 ***What's covered?***
Everything.

 ***What's included?***
Parts, Shipping and Labor.

MISSION CRITICAL SERVICE AND SUPPORT

In mission critical, 24/7/365 environments, quickly resolving a product issue is of top priority for both the Buyer and Russ Bassett.

Prompt execution of this warranty requires cooperation. With guidance from Russ Bassett, Buyer agrees to perform basic troubleshooting tasks to determine the nature of the defect and to self-correct before on-site assistance can be provided.

For simple replacements, the part will be quickly shipped directly to Buyer. If the problem requires on-site assistance, Russ Bassett will come out during normal work hours to resolve the issue. If the defect is found to have resulted from circumstances outside of the warranty coverage, and/or Buyer imposes conditions or restrictions that increases the service cost, Buyer agrees to reimburse Russ Bassett for any resulting additional expense. Buyer also agrees to properly dispose of the old parts and packing material.

The few circumstances where this warranty against defects would not apply include normal wear and tear, damage, misuse, modifications, consumable items or product shipped outside the U.S.

Repairs, substitute products or replacements, of equal or higher value, used to resolve a warranty claim will in no way extend the applicable warranty period applied to the original product. Product repair or replacement is Buyer's exclusive remedy for all product defects covered under this non-transferable warranty. Russ Bassett makes no other express or implied warranties to any product except as stated above and makes no warranty of Russ Bassett product fitness except for use as standard console furniture.