

WORK AUTHORIZATION NO. 2

PROJECT: County Road 404 Pavement Rehab

This Work Authorization is made pursuant to the terms and conditions of the Williamson County Contract for Engineering Services, being dated **June 14, 2022** and entered into by and between Williamson County, Texas, a political subdivision of the State of Texas, (the "County") and **Alliance Transportation Group** (the "Engineer").

Part 1. The Engineer will provide the following Engineering Services set forth in Attachment "B" of this Work Authorization.

Part 2. The maximum amount payable for services under this Work Authorization without modification is **\$49,030.00**.

Part 3. Payment to the Engineer for the services established under this Work Authorization shall be made in accordance with the Contract.

Part 4. This Work Authorization shall become effective on the date of final acceptance and full execution of the parties hereto and shall terminate on **September 30, 2024**. The Engineering Services set forth in Attachment "B" of this Work Authorization shall be fully completed on or before said date unless extended by a Supplemental Work Authorization.

Part 5. This Work Authorization does not waive the parties' responsibilities and obligations provided under the Contract.

Part 6. County believes it has sufficient funds currently available and authorized for expenditure to finance the costs of this Work Authorization. Engineer understands and agrees that County's payment of amounts under this Work Authorization is contingent on the County receiving appropriations or other expenditure authority sufficient to allow the County, in the exercise of reasonable administrative discretion, to continue to make payments under this Contract. It is further understood and agreed by Engineer that County shall have the right to terminate this Contract at the end of any County fiscal year if the governing body of County does not appropriate sufficient funds as determined by County's budget for the fiscal year in question. County may effect such termination by giving written notice of termination to Engineer.

Part 7. This Work Authorization is hereby accepted and acknowledged below.

EXECUTED this ____ day of _____, 2023.

ENGINEER:

Alliance Transportation Group

By: 

Signature

Chad Andrew Wood

Printed Name

Vice-President, Dir. of Engineering

Title

COUNTY:

Williamson County, Texas

By: _____

Signature

Bill Gravell, Jr.

Printed Name

Williamson County Judge

Title

LIST OF ATTACHMENTS

Attachment A - Services to be Provided by County

Attachment B - Services to be Provided by Engineer

Attachment C - Work Schedule

Attachment D - Fee Schedule

Attachment A
Services to be Provided by County
CR 404

Williamson County Road & Bridge Division personnel will provide:

- Project direction, review, and oversight
- Geotechnical investigations, data, and reports
- Conducting pre-bid meeting, responding to contractor questions during bidding, tabulating and evaluating bids after bid opening, and providing recommendation of award of contract.
- Construction oversight, administration, and management.

Attachment B

Services to be Provided by the Engineer

Project Location:

CR 404 from FM 3349 to Samsung Highway (approx. 10,000LF) ~ Williamson County Texas

Task 1: Project Management

Attend Progress Review Meetings with County Road & Bridge department at 90% and Final. Prepare monthly progress reports and invoices. Maintain project schedule and perform QA/QC.

Task 2: Topographic and R.O.W Surveys

N/A

Task 3: Preliminary Engineering

Conduct Site Visit, Field Reconnaissance, and existing project data collection to document existing conditions. Prepare preliminary Project Layout and Traffic Control Plans. Develop preliminary Cost Estimate, General Notes and Governing Specifications, and Construction Schedule for bidding purposes.

Initial Plan Sheets:

- Title Sheet / Index of Sheets
- Estimate & Quantity Sheet
- Typical Sections
- Traffic Control Plan and TCP Narrative (include SW3P Erosion Control Plan)
- Project Layout sheets (1:50 scale @ 10,000LF CR 404 centerline = 19 plan sheets minimum)
- Drainage Area Layout
- Culvert Plan & Profile
- Standards

CR 404 Construction Cost Estimate

Estimated CR 404 Construction Schedule

CR 404 Project Governing Specifications & General Notes

Task 4: Geotechnical Investigations

To be provided by the County

Task 5: Environmental Studies

N/A

Task 6: Utility Coordination

N/A

Task 7: FEMA Coordination

N/A

Task 8: Final Engineering

Address 90% PS&E package review comments and prepare Final PS&E package for bidding purposes:

Final Plan Sheets:

- Title Sheet / Index of Sheets
- Estimate & Quantity Sheet
- Typical Sections
- Driveway Details
- Traffic Control Plan and TCP Narrative (include erosion control plan)
- Project Layout sheets
- Standards

Final Construction Cost Estimate

Final Construction Schedule

Final Governing Specifications & General Notes

Prepare Bid-Tabs for processing by Purchasing Department

Task 9: Bidding Phase Services

N/A

Task 10: Construction Phase Services

N/A

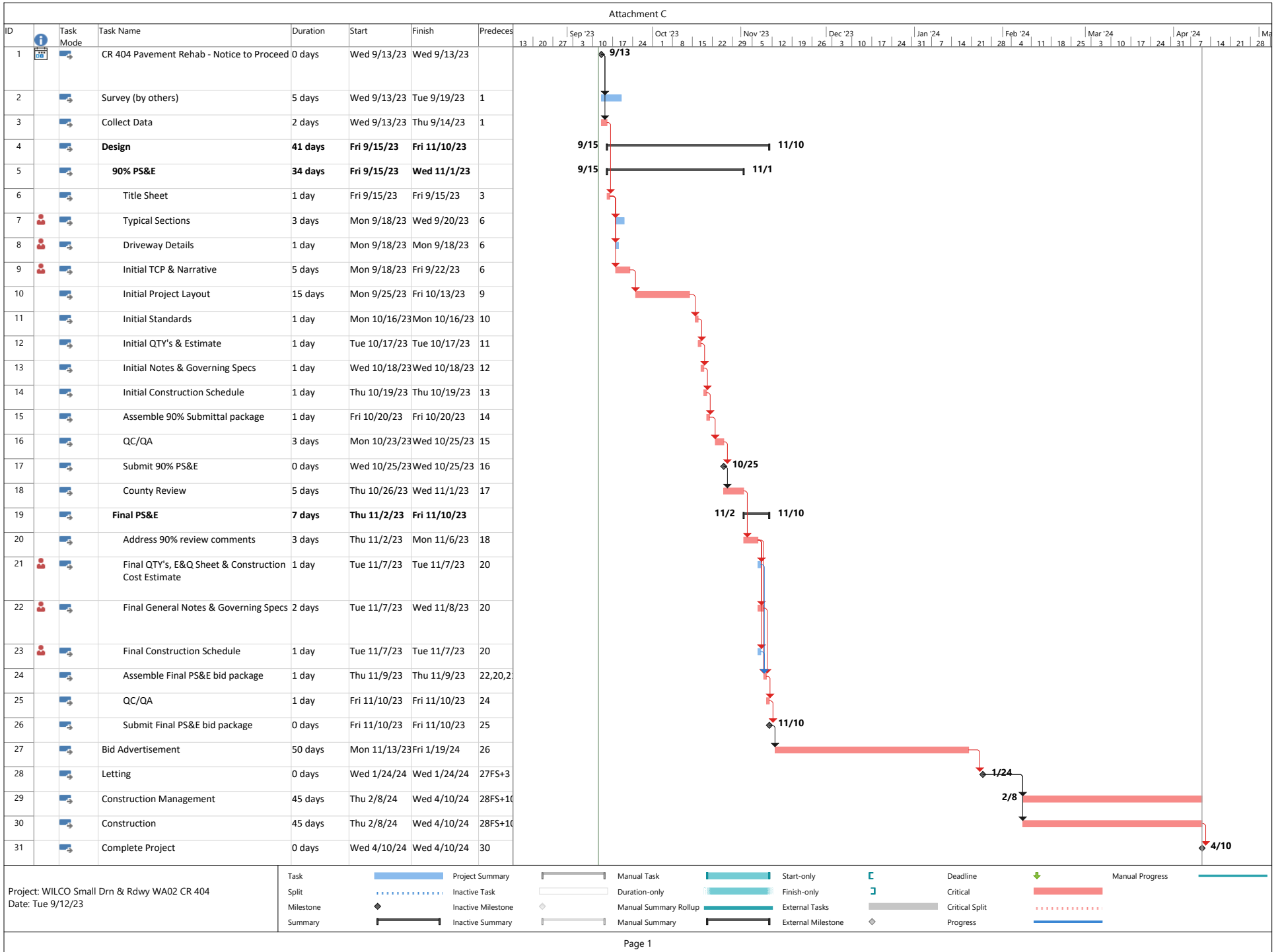
Deliverables:

90% Submittal:

- 2 paper copies of 11" x 17" Plan Sheets
- Estimate of Construction Cost
- Governing Specifications and General Notes
- Estimated Construction Schedule
- Engineer's internal QA/QC marked up set
- Electronic copy of submittal document package in PDF format

Final Submittal:

- 2 paper copies of 11" x 17" Plan Sheets
- Estimate of Construction Cost
- Governing Specifications and General Notes
- Estimated Construction Schedule
- Engineer's internal QA/QC marked up set
- Electronic copy of submittal document package in PDF format



Williamson County Small Drainage & Roadway Design (1711-206) CR 404 - WA02
Attachment D
CR 404 from FM 3349 to Samsung Highway approx. 10,000 ft

Task Description	Project Principal	Senior Project Manager	Project Manager	Traffic Engineer	Senior Engineer	Project Engineer	Engineer -In- Training	Senior Engineering Technician	Engineering Technician	Project Administrator	Clerical	Total Labor Hours & Costs
Task 1: Project Management												
Progress Review Meetings (1 meeting)		2										2
Invoicing and Progress Reports		4								8		12
Subconsultants												0
QA/QC of Deliverables at 90% and FINAL		8	12					16				36
Labor Hours Subtotal	0	14	12	0	0	0	0	16	0	8	0	50
Contract Labor Rate Per Hour	\$ 305.00	\$ 285.00	\$ 257.00	\$ 175.00	\$ 245.00	\$ 200.00	\$ 127.00	\$ 153.00	\$ 111.00	\$ 127.00	\$ 89.00	
Labor Costs Subtotal	\$ -	\$ 3,990.00	\$ 3,084.00	\$ -	\$ -	\$ -	\$ -	\$ 2,448.00	\$ -	\$ 1,016.00	\$ -	\$ 10,538.00

Task Description	Project Principal	Senior Project Manager	Project Manager	Traffic Engineer	Senior Engineer	Project Engineer	Engineer -In- Training	Senior Engineering Technician	Engineering Technician	Project Administrator	Clerical	Total Labor Hours & Costs
Task 2: Topographic and R.O.W. Surveys												
N/A												0
Labor Hours Subtotal	0	0	0	0	0	0	0	0	0	0	0	0
Contract Labor Rate Per Hour	\$ 305.00	\$ 285.00	\$ 257.00	\$ 175.00	\$ 245.00	\$ 200.00	\$ 127.00	\$ 153.00	\$ 111.00	\$ 127.00	\$ 89.00	
Labor Costs Subtotal	\$ -	\$ -	\$ -	\$ -	\$ -	\$ -	\$ -	\$ -	\$ -	\$ -	\$ -	\$ -

Task Description	Project Principal	Senior Project Manager	Project Manager	Traffic Engineer	Senior Engineer	Project Engineer	Engineer -In- Training	Senior Engineering Technician	Engineering Technician	Project Administrator	Clerical	Total Labor Hours & Costs
Task 3: Preliminary Engineering												
Site Visit & Field Recon												0
Data Collection												0
Initial Plans, Specifications & Estimate												0
Title Sheet / Index of Sheets							8					8
Typical Sections							8					8
Traffic Control Plan (Layout 1"=50') & Narrative		8					16					24
Project Layout Plan sheets (1"=50')		24					62					86
Standards							8					8
Cost Estimate / Estimate and Quantity Sheet		6					2					8
Governing Specifications & General Notes		6					2					8
Construction Schedule		4										4
Assemble & Submit 90% PS&E		2					6					8
Labor Hours Subtotal	0	50	0	0	0	0	112	0	0	0	0	162
Contract Labor Rate Per Hour	\$ 305.00	\$ 285.00	\$ 257.00	\$ 175.00	\$ 245.00	\$ 200.00	\$ 127.00	\$ 153.00	\$ 111.00	\$ 127.00	\$ 89.00	
Labor Costs Subtotal	\$ -	\$ 14,250.00	\$ -	\$ -	\$ -	\$ -	\$ 14,224.00	\$ -	\$ -	\$ -	\$ -	\$ 28,474.00

Task Description	Project Principal	Senior Project Manager	Project Manager	Traffic Engineer	Senior Engineer	Project Engineer	Engineer -In- Training	Senior Engineering Technician	Engineering Technician	Project Administrator	Clerical	Total Labor Hours & Costs
Task 4: Geotechnical Investigation												
N/A												0
Labor Hours Subtotal	0	0	0	0	0	0	0	0	0	0	0	0
Contract Labor Rate Per Hour	\$ 305.00	\$ 285.00	\$ 257.00	\$ 175.00	\$ 245.00	\$ 200.00	\$ 127.00	\$ 153.00	\$ 111.00	\$ 127.00	\$ 89.00	
Labor Costs Subtotal	\$ -	\$ -	\$ -	\$ -	\$ -	\$ -	\$ -	\$ -	\$ -	\$ -	\$ -	\$ -

Task Description	Project Principal	Senior Project Manager	Project Manager	Traffic Engineer	Senior Engineer	Project Engineer	Engineer -In- Training	Senior Engineering Technician	Engineering Technician	Project Administrator	Clerical	Total Labor Hours & Costs
Task 5: Environmental Studies												
N/A												0
Labor Hours Subtotal	0	0	0	0	0	0	0	0	0	0	0	0
Contract Labor Rate Per Hour	\$ 305.00	\$ 285.00	\$ 257.00	\$ 175.00	\$ 245.00	\$ 200.00	\$ 127.00	\$ 153.00	\$ 111.00	\$ 127.00	\$ 89.00	
Labor Costs Subtotal	\$ -	\$ -	\$ -	\$ -	\$ -	\$ -	\$ -	\$ -	\$ -	\$ -	\$ -	\$ -

Task Description	Project Principal	Senior Project Manager	Project Manager	Traffic Engineer	Senior Engineer	Project Engineer	Engineer -In- Training	Senior Engineering Technician	Engineering Technician	Project Administrator	Clerical	Total Labor Hours & Costs
Task 6: Utility Coordination												
N/A												0
Labor Hours Subtotal	0	0	0	0	0	0	0	0	0	0	0	0
Contract Labor Rate Per Hour	\$ 305.00	\$ 285.00	\$ 257.00	\$ 175.00	\$ 245.00	\$ 200.00	\$ 127.00	\$ 153.00	\$ 111.00	\$ 127.00	\$ 89.00	
Labor Costs Subtotal	\$ -	\$ -	\$ -	\$ -	\$ -	\$ -	\$ -	\$ -	\$ -	\$ -	\$ -	\$ -

Task Description	Project Principal	Senior Project Manager	Project Manager	Traffic Engineer	Senior Engineer	Project Engineer	Engineer -In- Training	Senior Engineering Technician	Engineering Technician	Project Administrator	Clerical	Total Labor Hours & Costs
Task 7: FEMA Coordination												
N/A												0
Labor Hours Subtotal	0	0	0	0	0	0	0	0	0	0	0	0
Contract Labor Rate Per Hour	\$ 305.00	\$ 285.00	\$ 257.00	\$ 175.00	\$ 245.00	\$ 200.00	\$ 127.00	\$ 153.00	\$ 111.00	\$ 127.00	\$ 89.00	
Labor Costs Subtotal	\$ -	\$ -	\$ -	\$ -	\$ -	\$ -	\$ -	\$ -	\$ -	\$ -	\$ -	\$ -

Task Description	Project Principal	Senior Project Manager	Project Manager	Traffic Engineer	Senior Engineer	Project Engineer	Engineer -In- Training	Senior Engineering Technician	Engineering Technician	Project Administrator	Clerical	Total Labor Hours & Costs
Task 8: Final Engineering												
Address 90% PS&E review comments		4					16					20
Final QTY's, E&Q Sheet & Construction Cost Estimate		8					8					16
Final Governing Specifications & General Notes		4					2					6
Final Construction Schedule		2										2
Assemble & Submit Final PS&E (Bid Tabs)		2					8					10
Labor Hours Subtotal	0	20	0	0	0	0	34	0	0	0	0	54
Contract Labor Rate Per Hour	\$ 305.00	\$ 285.00	\$ 257.00	\$ 175.00	\$ 245.00	\$ 200.00	\$ 127.00	\$ 153.00	\$ 111.00	\$ 127.00	\$ 89.00	
Labor Costs Subtotal	\$ -	\$ 5,700.00	\$ -	\$ -	\$ -	\$ -	\$ 4,318.00	\$ -	\$ -	\$ -	\$ -	\$ 10,018.00

Task Description	Project Principal	Senior Project Manager	Project Manager	Traffic Engineer	Senior Engineer	Project Engineer	Engineer -In- Training	Senior Engineering Technician	Engineering Technician	Project Administrator	Clerical	Total Labor Hours & Costs
Task 9: Bidding Phase Services												
9.1 Prepare Bid Tabs												0
Labor Hours Subtotal	0	0	0	0	0	0	0	0	0	0	0	0
Contract Labor Rate Per Hour	\$ 305.00	\$ 285.00	\$ 257.00	\$ 175.00	\$ 245.00	\$ 200.00	\$ 127.00	\$ 153.00	\$ 111.00	\$ 127.00	\$ 89.00	
Labor Costs Subtotal	\$ -	\$ -	\$ -	\$ -	\$ -	\$ -	\$ -	\$ -	\$ -	\$ -	\$ -	\$ -

Task Description	Project Principal	Senior Project Manager	Project Manager	Traffic Engineer	Senior Engineer	Project Engineer	Engineer -In- Training	Senior Engineering Technician	Engineering Technician	Project Administrator	Clerical	Total Labor Hours & Costs
Task 10: Construction Phase Services												
10.1 Review Shop Drawings and RFIs (Assume 2 RFIs)												0
10.2 OMITTED												0
10.3 Project closout, As-Built and submittal of electronic files												0
Labor Hours Subtotal	0	0	0	0	0	0	0	0	0	0	0	0
Contract Labor Rate Per Hour	\$ 305.00	\$ 285.00	\$ 257.00	\$ 175.00	\$ 245.00	\$ 200.00	\$ 127.00	\$ 153.00	\$ 111.00	\$ 127.00	\$ 89.00	
Labor Costs Subtotal	\$ -	\$ -	\$ -	\$ -	\$ -	\$ -	\$ -	\$ -	\$ -	\$ -	\$ -	\$ -

DESCRIPTION											TOTAL MH BY TASK	TOTAL COST BY TASK
Task 1: Project Management											50	\$ 10,538.00
Task 2: Topographic and R.O.W. Surveys											0	\$ -
Task 3: Preliminary Engineering											162	\$ 28,474.00
Task 4: Geotechnical Investigation											0	\$ -
Task 5: Environmental Studies											0	\$ -
Task 6: Utility Coordination											0	\$ -
Task 7: FEMA Coordination											0	\$ -
Task 8: Final Engineering											54	\$ 10,018.00
Task 9: Bidding Phase Services											0	\$ -
Task 10: Construction Phase Services											0	\$ -
SUBTOTAL LABOR COST											266	\$ 49,030.00

DIRECT EXPENSES

Description	Unit	Cost/Unit	Quantity	Total Cost
Mileage	mile	\$ 0.655		\$ -
Standard Postage - Letter	each	\$ 0.58		\$ -
Certified Letter Return Receipt	each	\$ 7.38		\$ -
Overnight Mail - Letter Size	each	\$ 26.35		\$ -
Overnight Mail - Oversized Box	each	\$ 30.00		\$ -
Courier Services	each	\$ 75.00		\$ -
Photocopies B/W (8 1/2" x 11")	each	\$ 0.15		\$ -
Photocopies B/W (11" x 17")	each	\$ 0.20		\$ -
Photocopies Color (8 1/2" x 11")	each	\$ 0.75		\$ -
Photocopies Color (11" x 17")	each	\$ 1.75		\$ -
Plots (B/W on Bond)	square foot	\$ 6.00		\$ -
Plots (Color on Bond)	square foot	\$ 8.00		\$ -
CDs	each	\$ 0.50		\$ -
SUBTOTAL DIRECT EXPENSES				\$ -

SUMMARY	
SUBTOTAL LABOR COST	\$ 49,030.00
SUBTOTAL DIRECT EXPENSE	\$ -
TOTAL	\$ 49,030.00